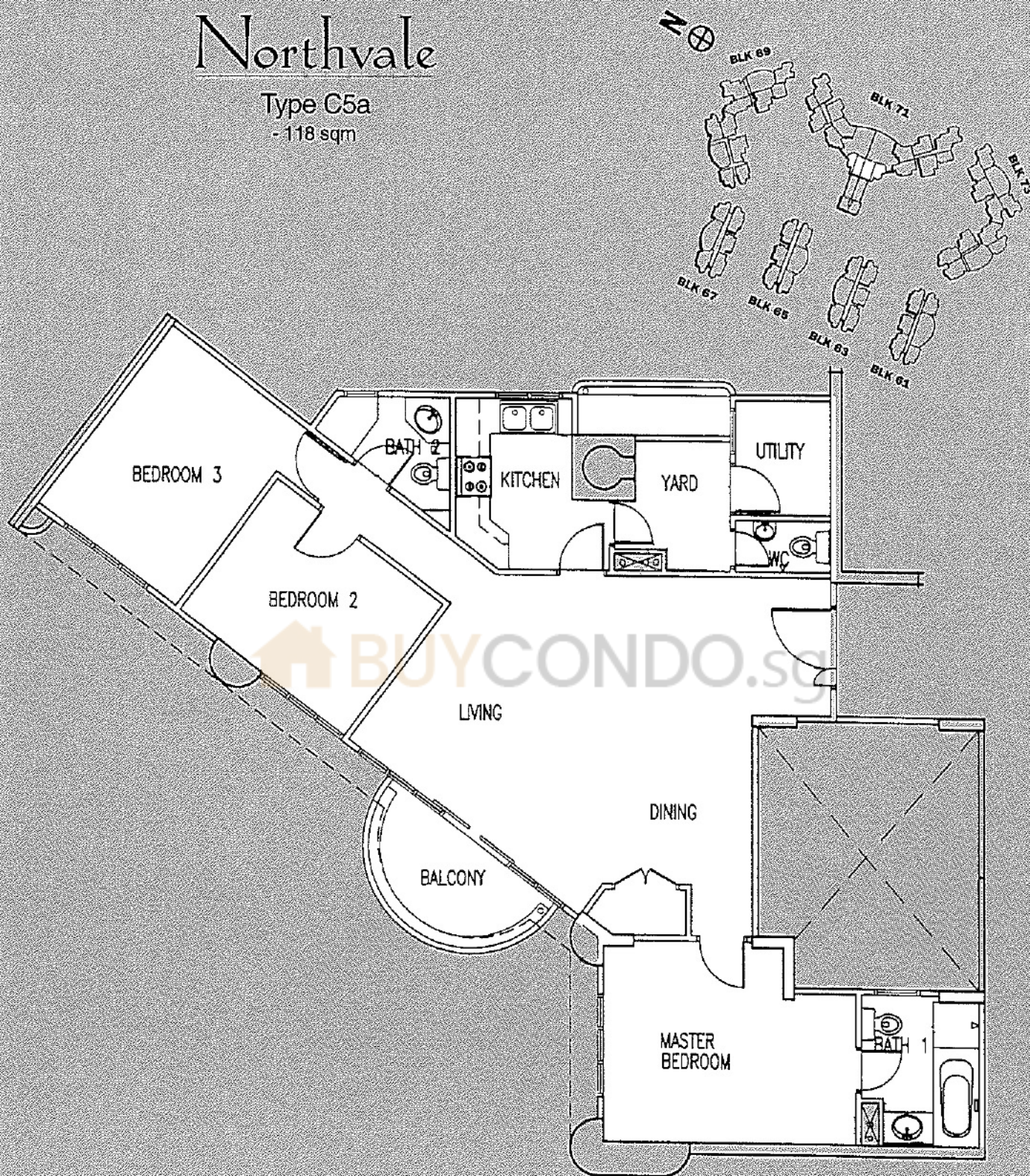


# Northvale

Type C5a  
- 118 sqm

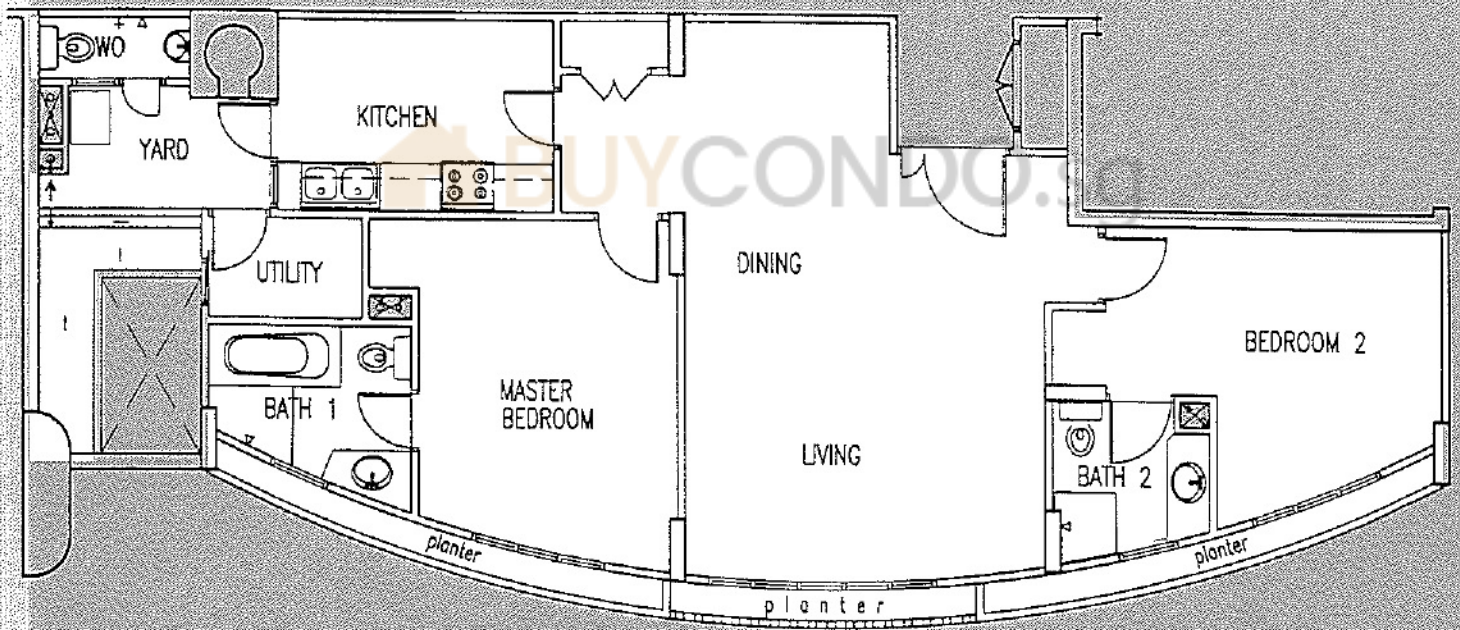
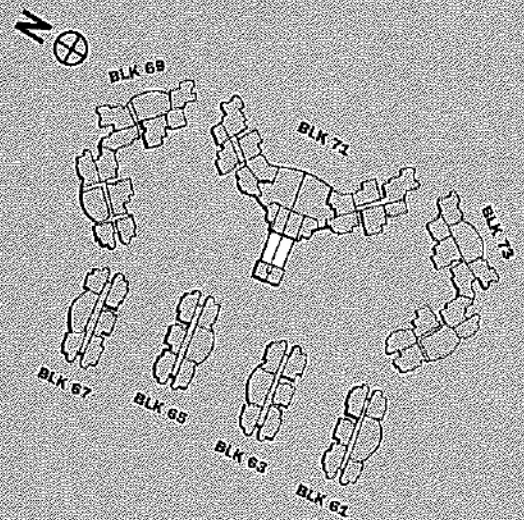


Approximate area	(sqm)
- Living / Dining	: 41.71
- Kitchen	: 7.53
- Master bedroom	: 16.35
- Bedroom 2	: 11.44
- Bedroom 3	: 13.71



# Northvale

Type B3  
- 109 sqm



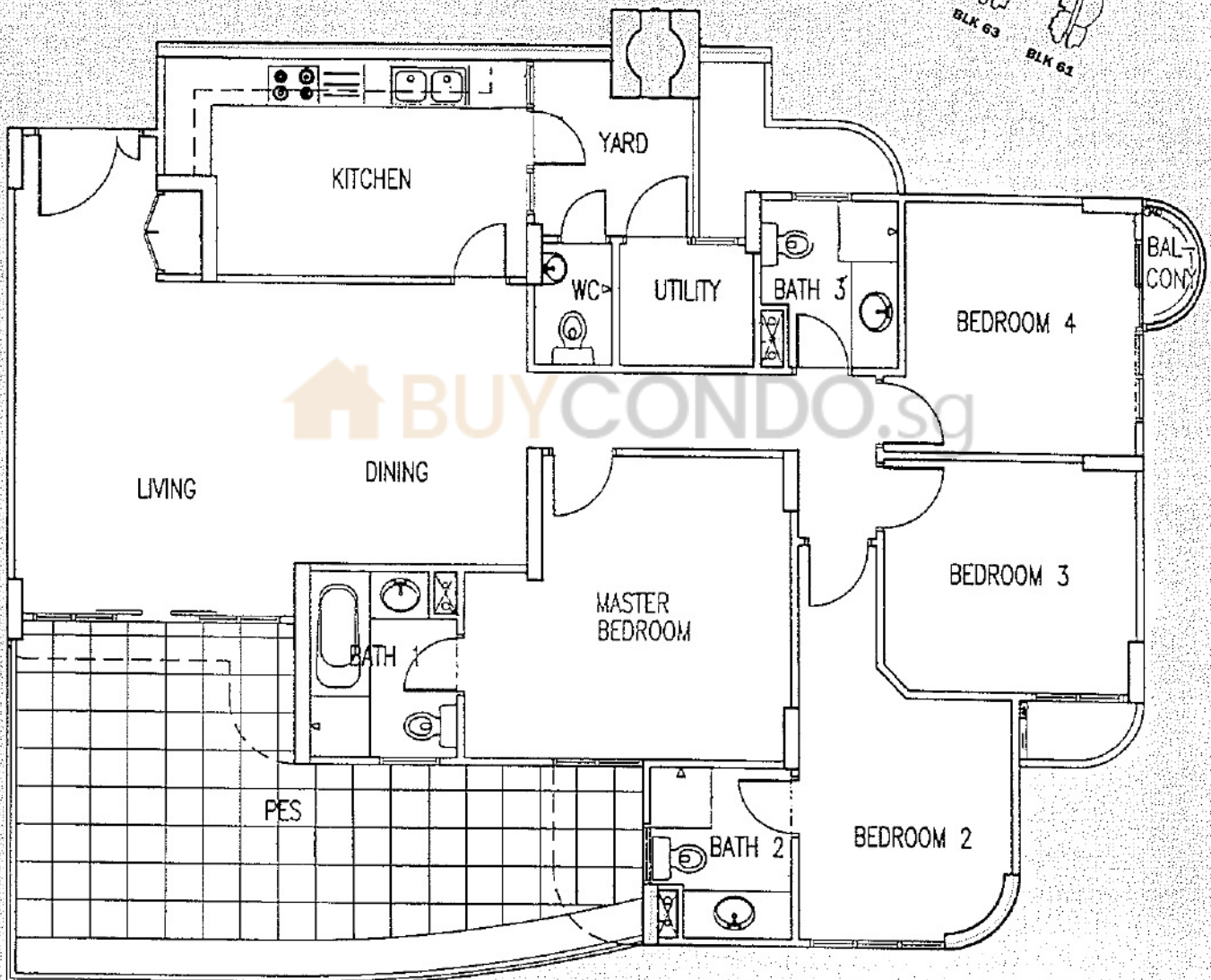
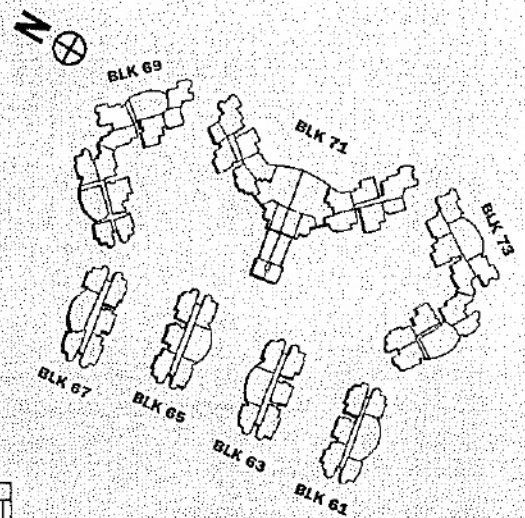
Approximate area	(sqm)
- Living / Dining	: 36.76
- Kitchen	: 9.89
- Master bedroom	: 16.65
- Bedroom 2	: 15.70



# Northvale

## Type D1

- 140 sqm
- 165 sqm\*

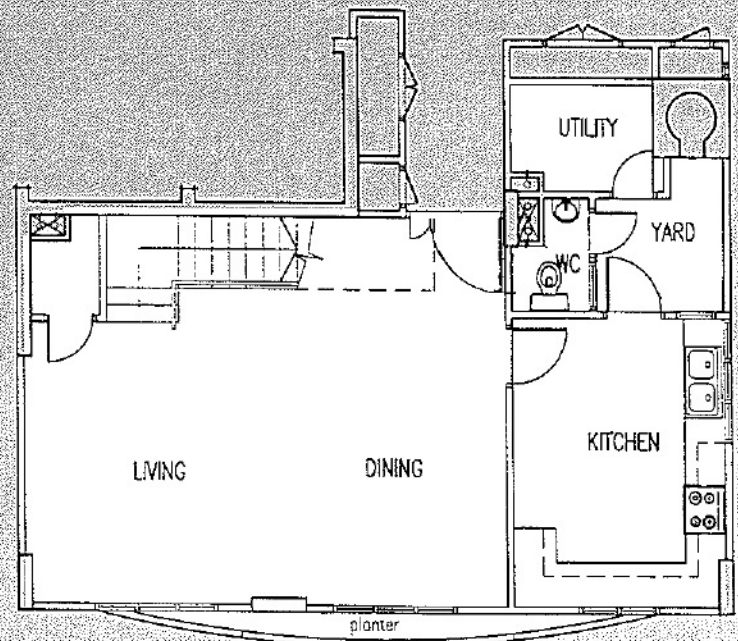
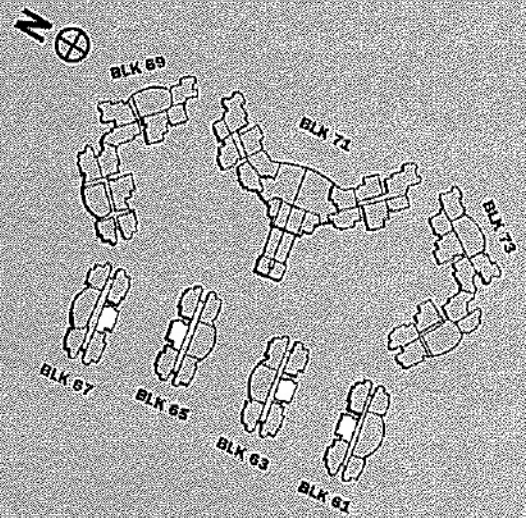
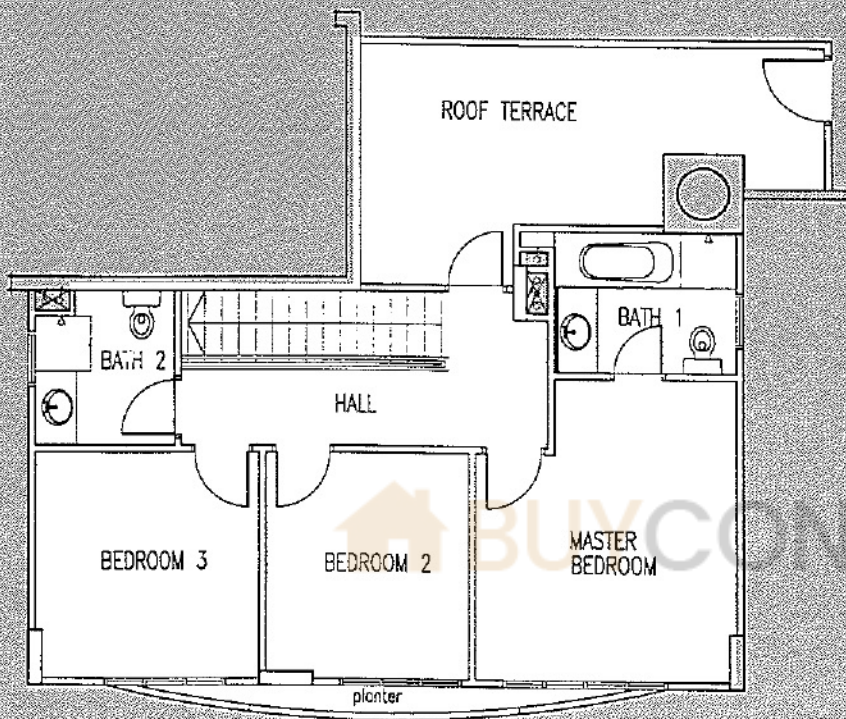


Approximate area	(sqm)
- Living / Dining	: 39.86
- Kitchen	: 14.16
- Master bedroom	: 16.89
- Bedroom 2	: 12.20
- Bedroom 3	: 11.04
- Bedroom 4	: 12.57
* - Private enclosed space (1st storey only)	: 31.00



# Northvale

Type C3  
~ 150 sqm

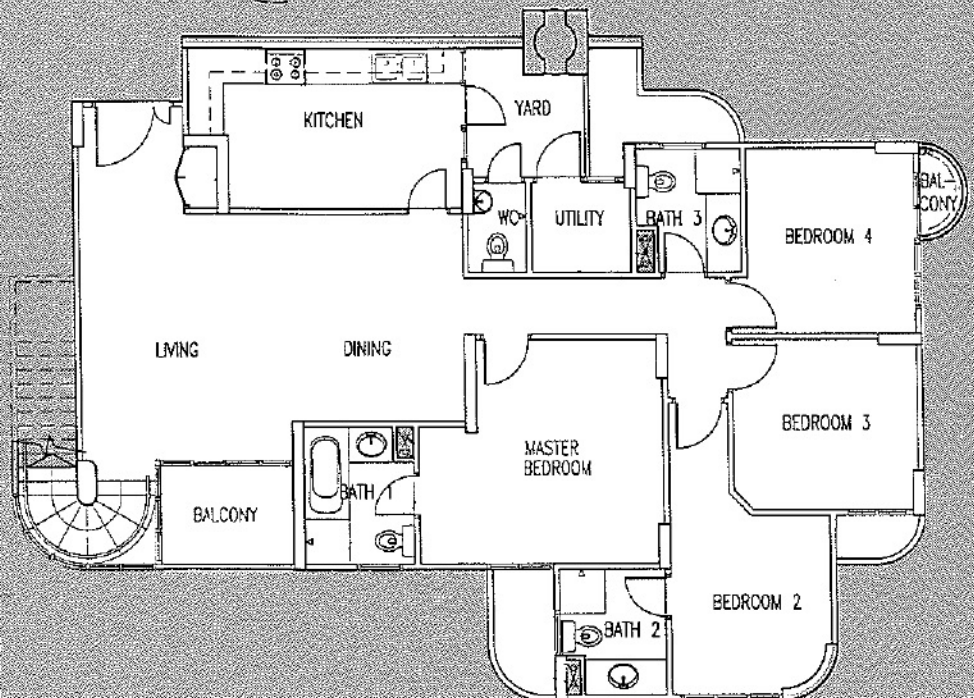
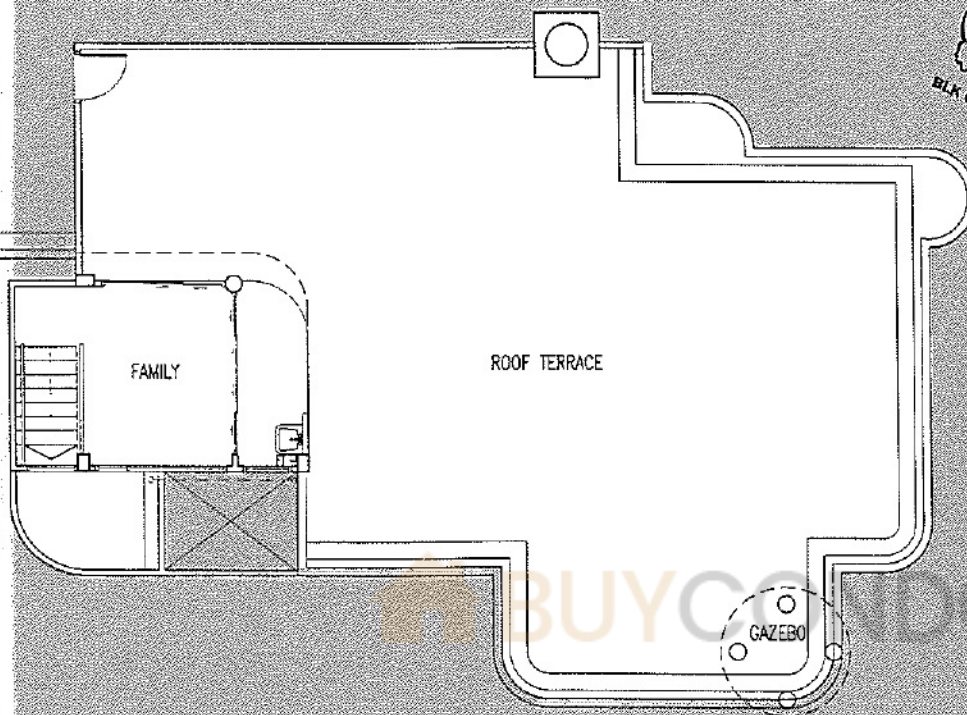
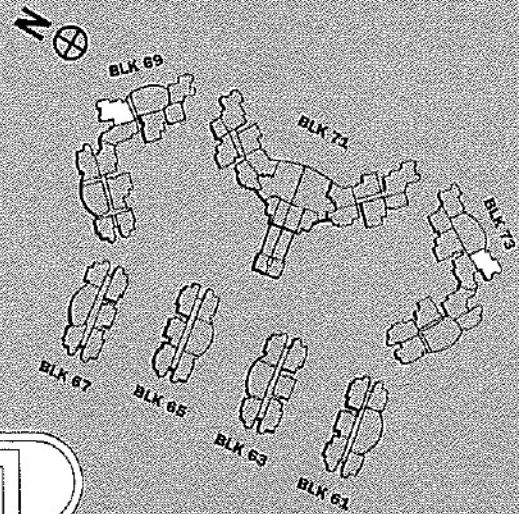


Approximate area	(sqm)
Living / Dining	: 40.12
Kitchen	: 14.36
Master bedroom	: 16.71
Bedroom 2	: 10.96
Bedroom 3	: 11.90
Roof terrace	: 18.00



# Northvale

Type D2  
~ 294 sqm



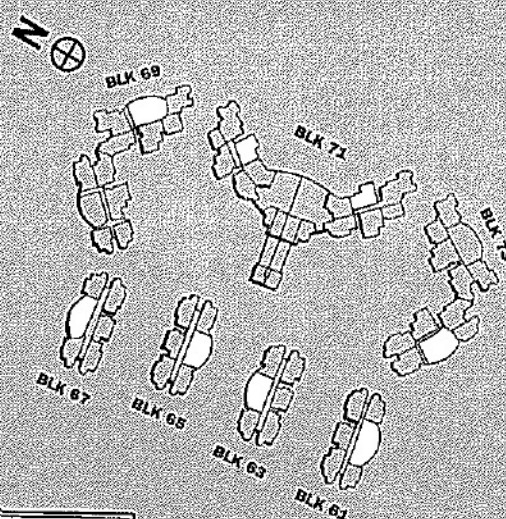
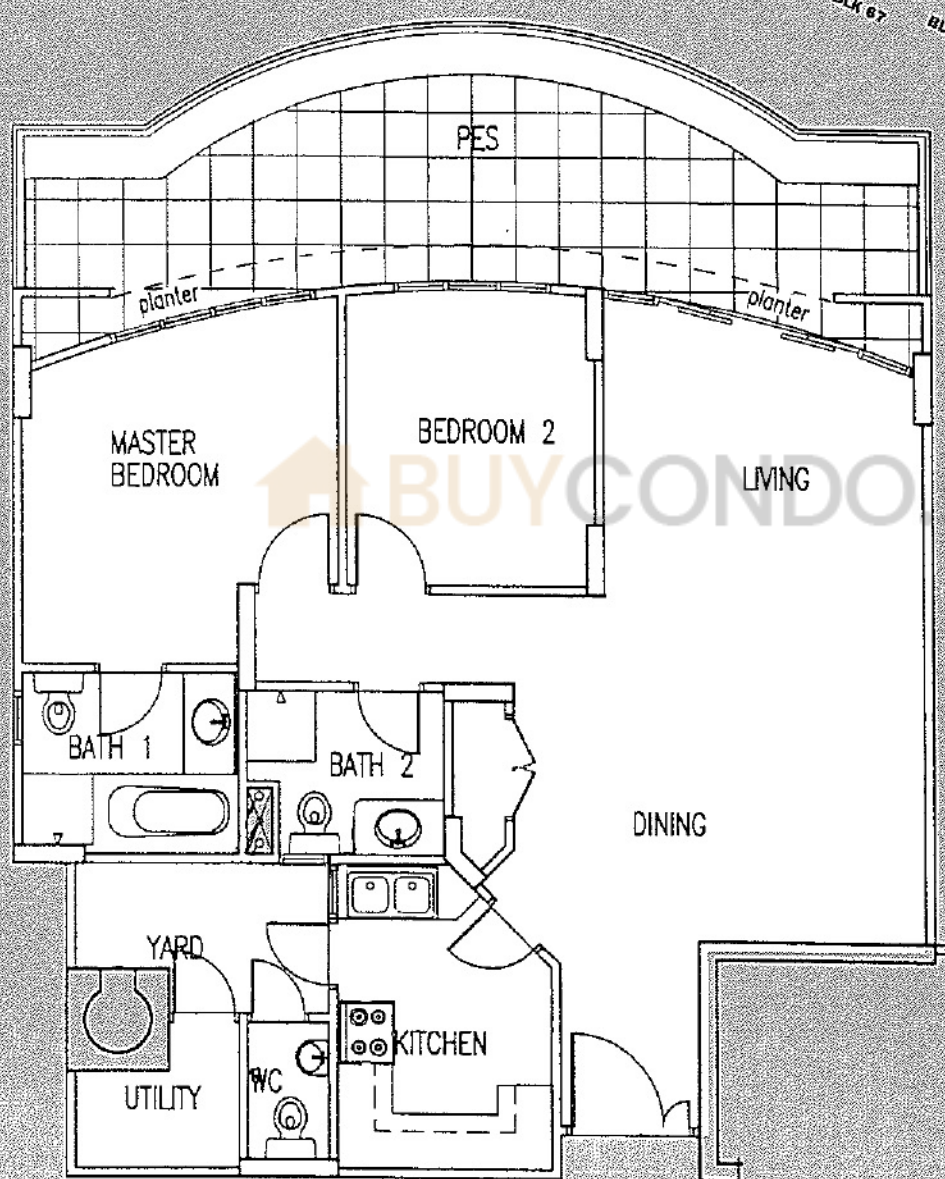
Approximate area	(sqm)
Living / Dining	: 44.39
Kitchen	: 14.60
Master bedroom	: 16.89
Bedroom 2	: 12.20
Bedroom 3	: 11.04
Bedroom 4	: 12.57
Roof terrace	: 131.00



# Northvale

## Type B1

- 101 sqm  
- 119 sqm\*



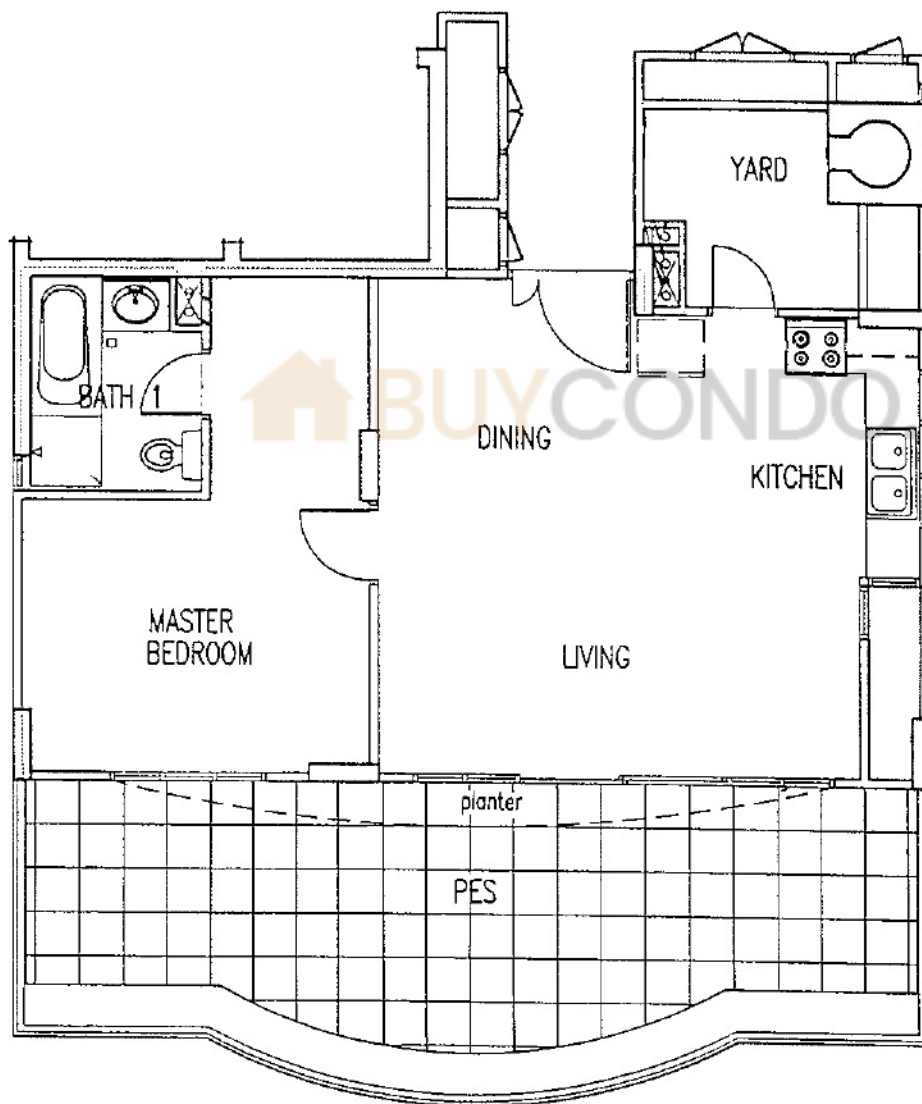
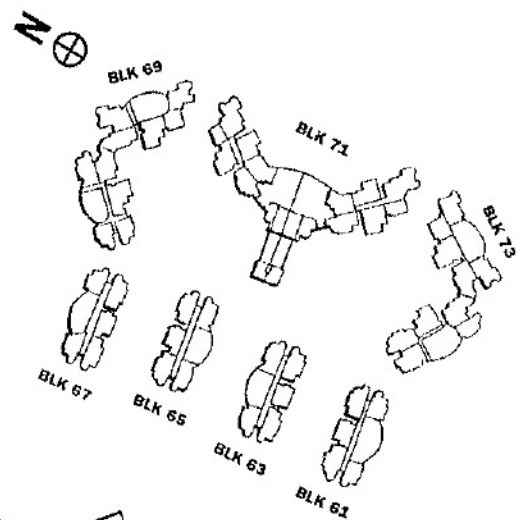
Approximate area	(sqm)
- Living / Dining	: 38.80
- Kitchen	: 8.49
- Master bedroom	: 13.75
- Bedroom 2	: 28.00
* - Private enclosed space, (1st storey only)	: 28.00
* - Private enclosed space, (1st storey only)	: 19.00



# Northvale

## Type A1

- 67 sqm  
- 98 sqm\*



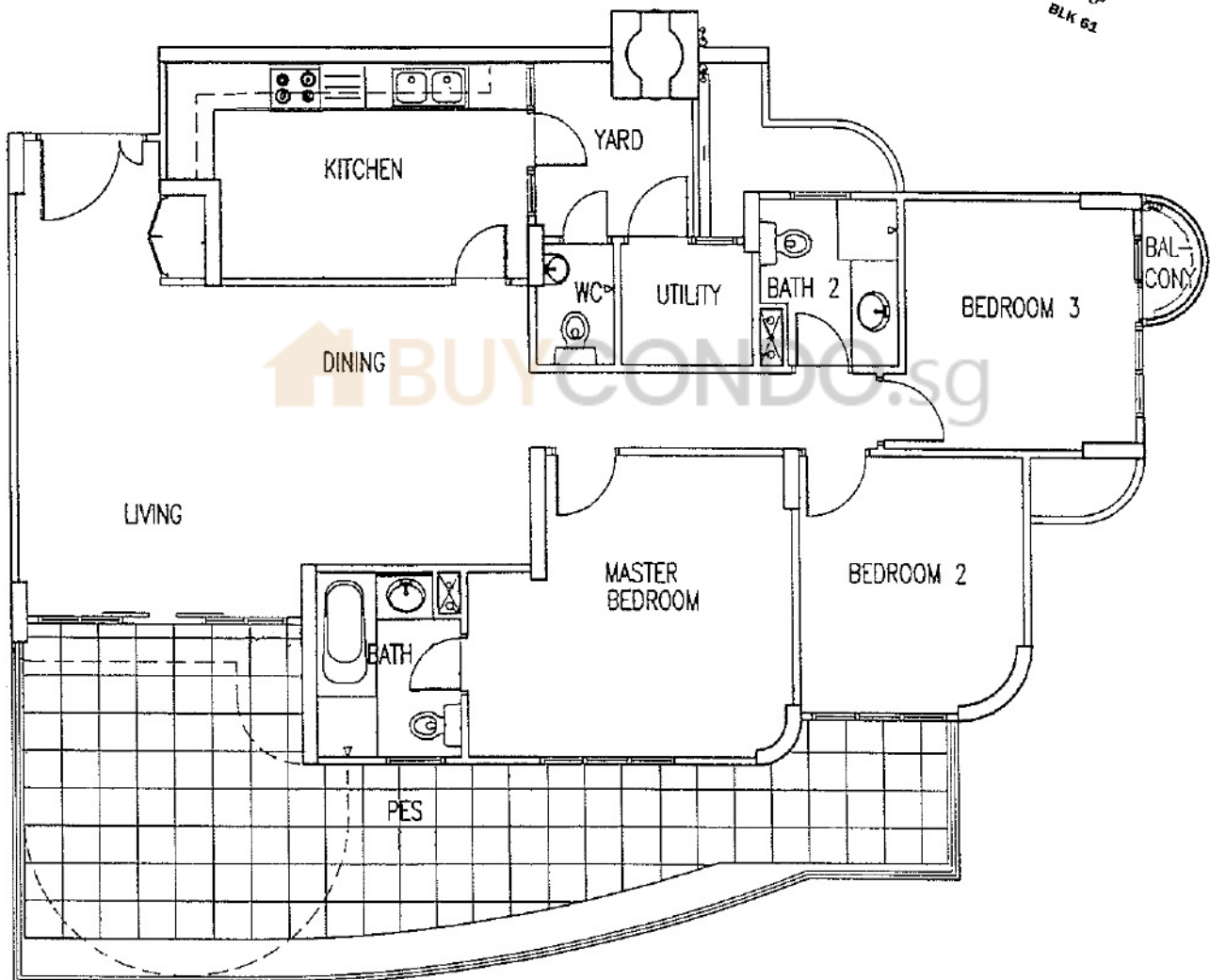
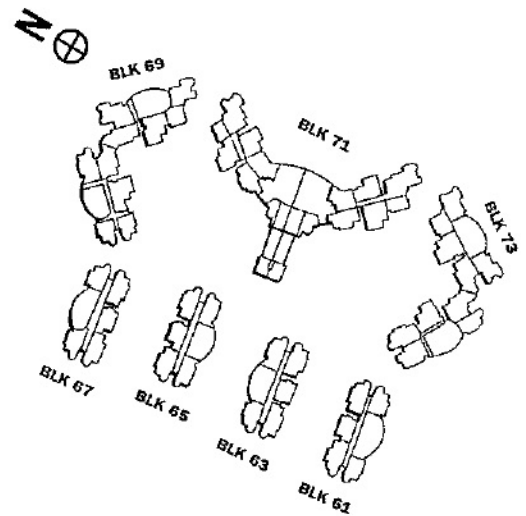
Approximate area	(sqm)
- Living / Dining	: 23.72
- Kitchen	: 10.42
- Master bedroom	: 18.75
* - Private enclosed space,	: 34.00
(1st storey only)	



# Northvale

## Type C1

- 118 sqm / 120 sqm
- 134 sqm\* / 156 sqm\*

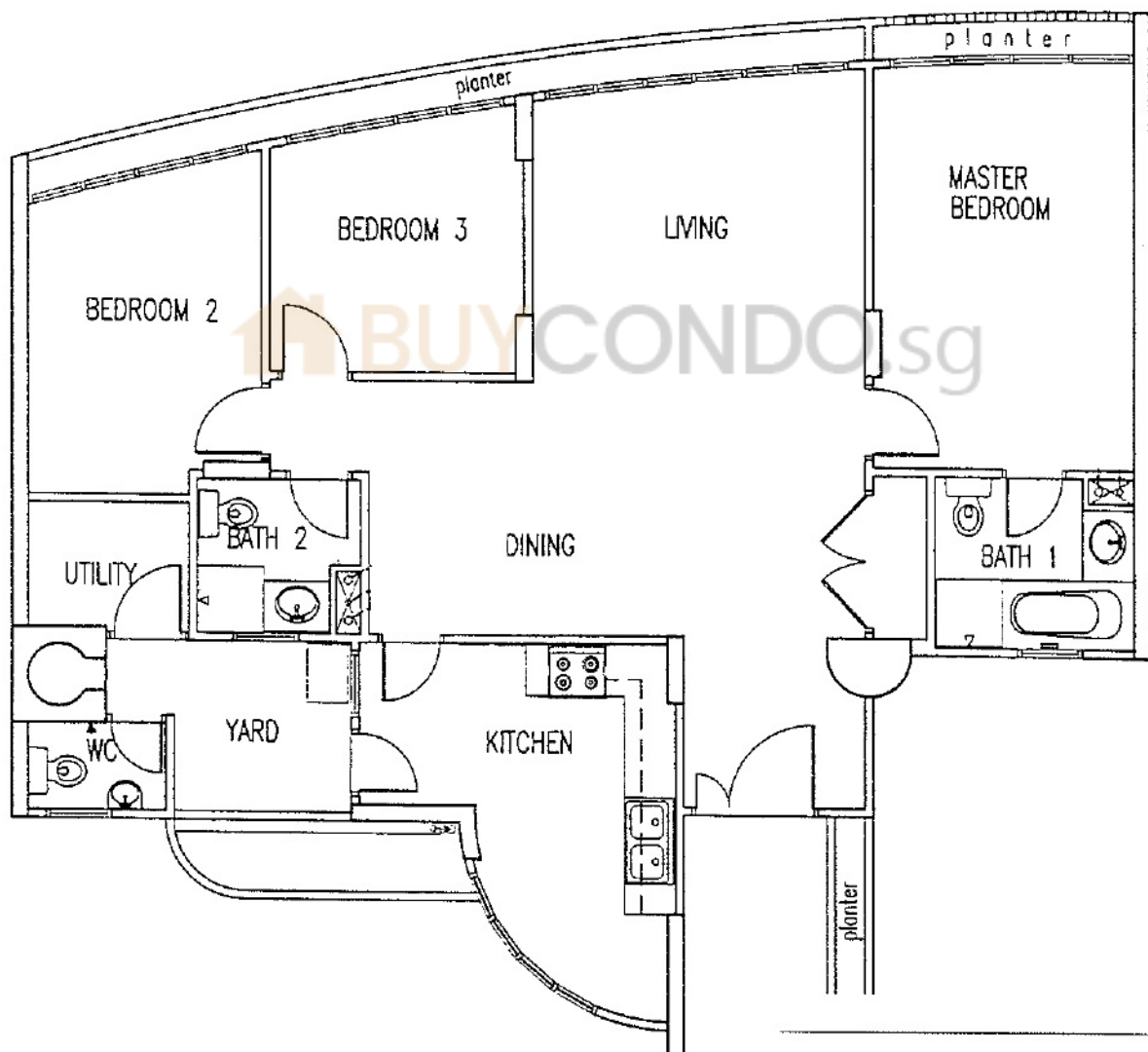
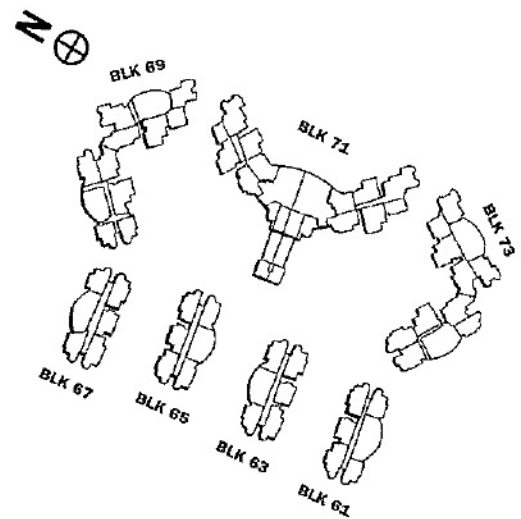


Approximate area	(sqm)
- Living / Dining	: 38.54
- Kitchen	: 14.16
- Master bedroom	: 16.95
- Bedroom 2	: 10.96
- Bedroom 3	: 12.64
Blk 61, 63 & 65*- Private enclosed space, (1st storey only)	: 40.00
Blk 69 & 73*- Private enclosed space, (1st storey only)	: 19.00



# Northvale

Type C4  
- 123 sqm

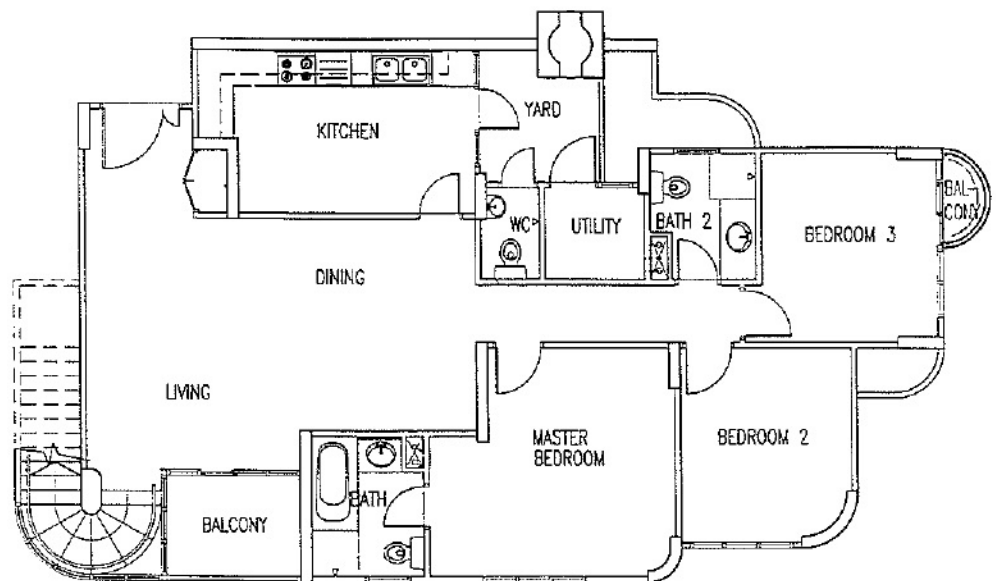
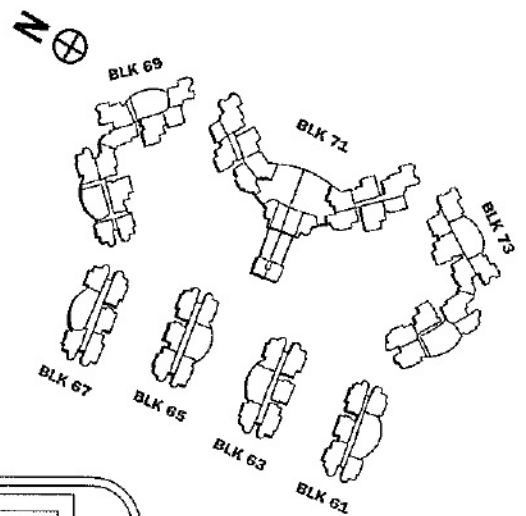
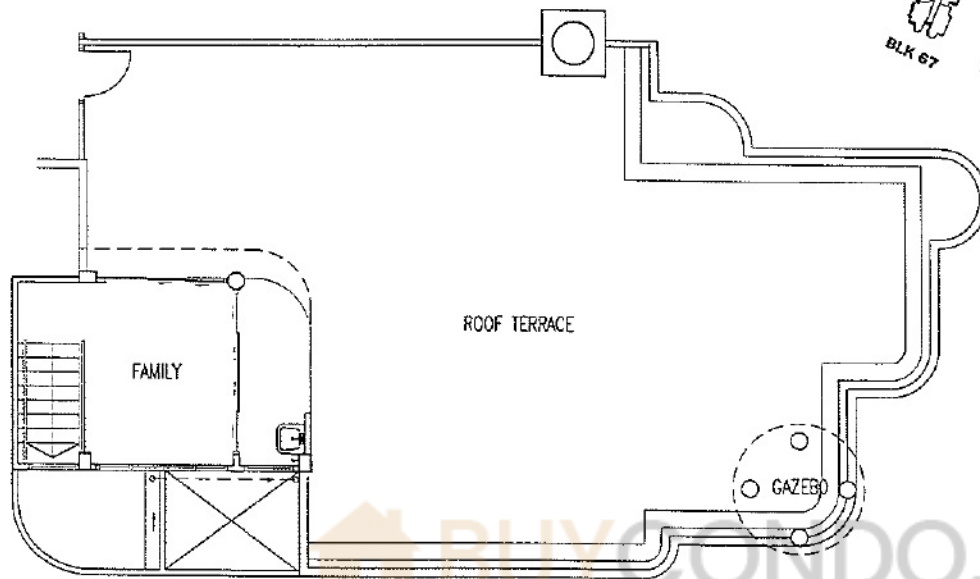


Approximate area	(sqm)
- Living / Dining	: 40.34
- Kitchen	: 14.06
- Master bedroom	: 16.79
- Bedroom 2	: 11.52
- Bedroom 3	: 10.01



# Northvale

Type C<sub>2</sub>  
- 251 sqm / 253 sqm



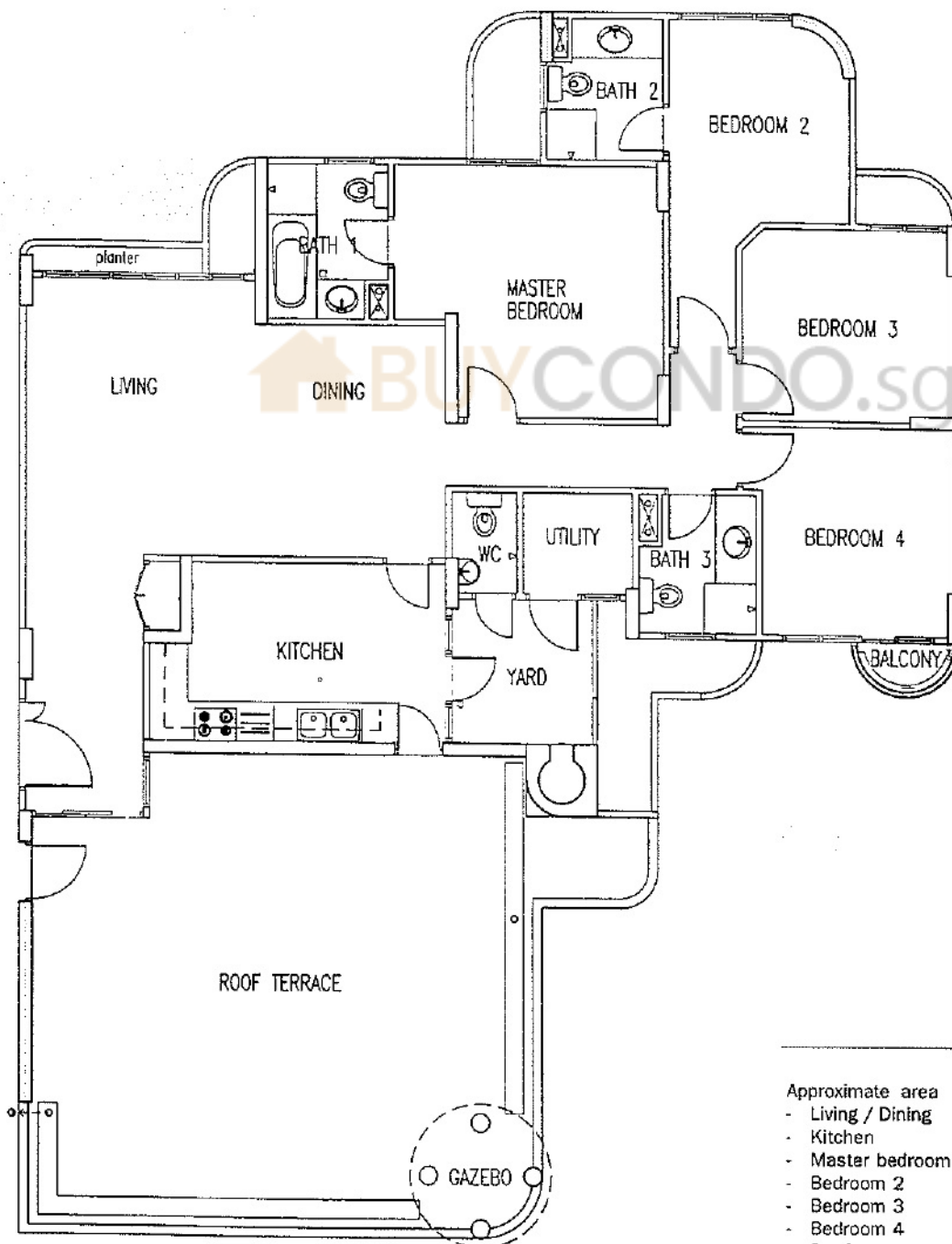
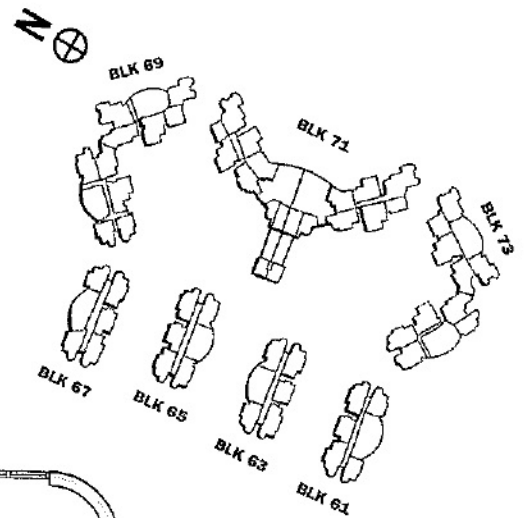
Approximate area	(sqm)
- Living / Dining	: 43.07
- Kitchen	: 14.16
- Master bedroom	: 16.95
- Bedroom 2	: 10.96
- Bedroom 3	: 12.64
- Roof terrace	: 110.00



Type  
D1b

# Northvale

Type D1b  
~ 211 sqm



Approximate area	(sqm)
- Living / Dining	: 44.52
- Kitchen	: 14.56
- Master bedroom	: 16.89
- Bedroom 2	: 12.21
- Bedroom 3	: 11.04
- Bedroom 4	: 12.57
- Roof terrace	: 63.00