

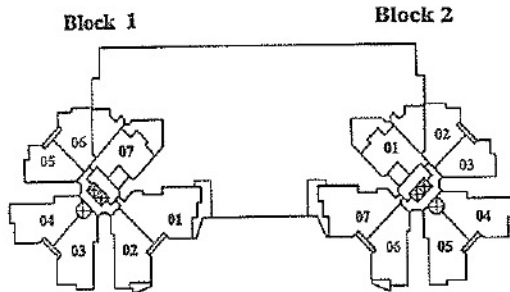
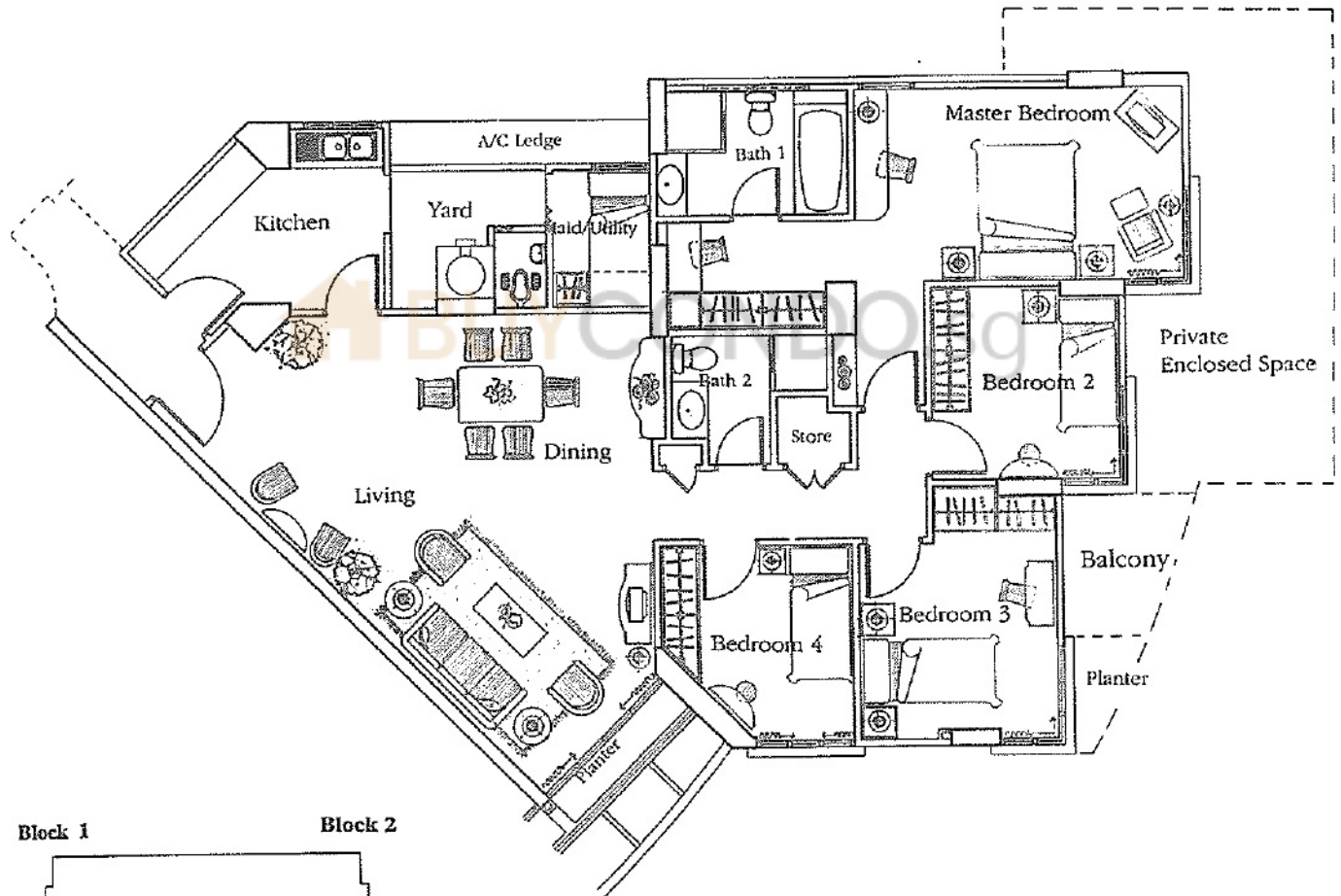
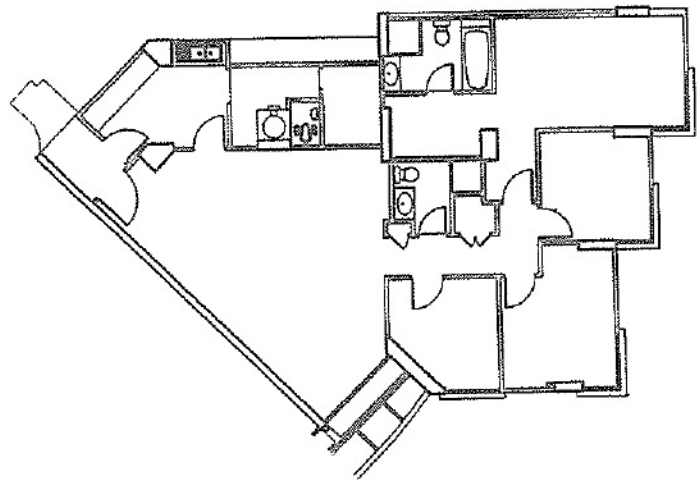
Type D2 (Blocks 1 & 2)

Type D2 (5th to 23rd Storey)

Guide to major areas Approx. sq ft

Living/Dining	450
Master Bedroom	232
Bedroom 2	90
Bedroom 3	113
Bedroom 4	85
Kitchen	90
Planter	20
Others	384
TOTAL FLOOR AREA	1464

Type D2(p/b): Total floor area on 4th storey with PES, balcony and planter is 1754 sq ft



While every reasonable care has been taken in preparing these floor plans, the developer and its agents cannot be held responsible for any inaccuracies. All plans are subject to any amendments approved or as may be approved by the relevant authority. Floor areas are approximate measurements and subject to final survey.

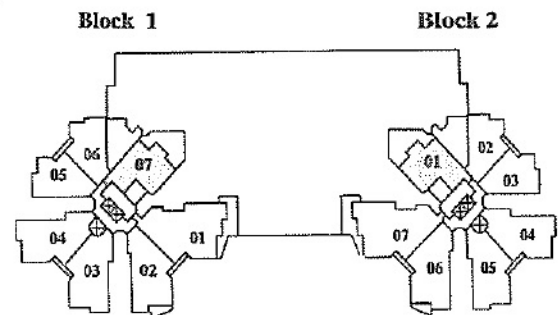
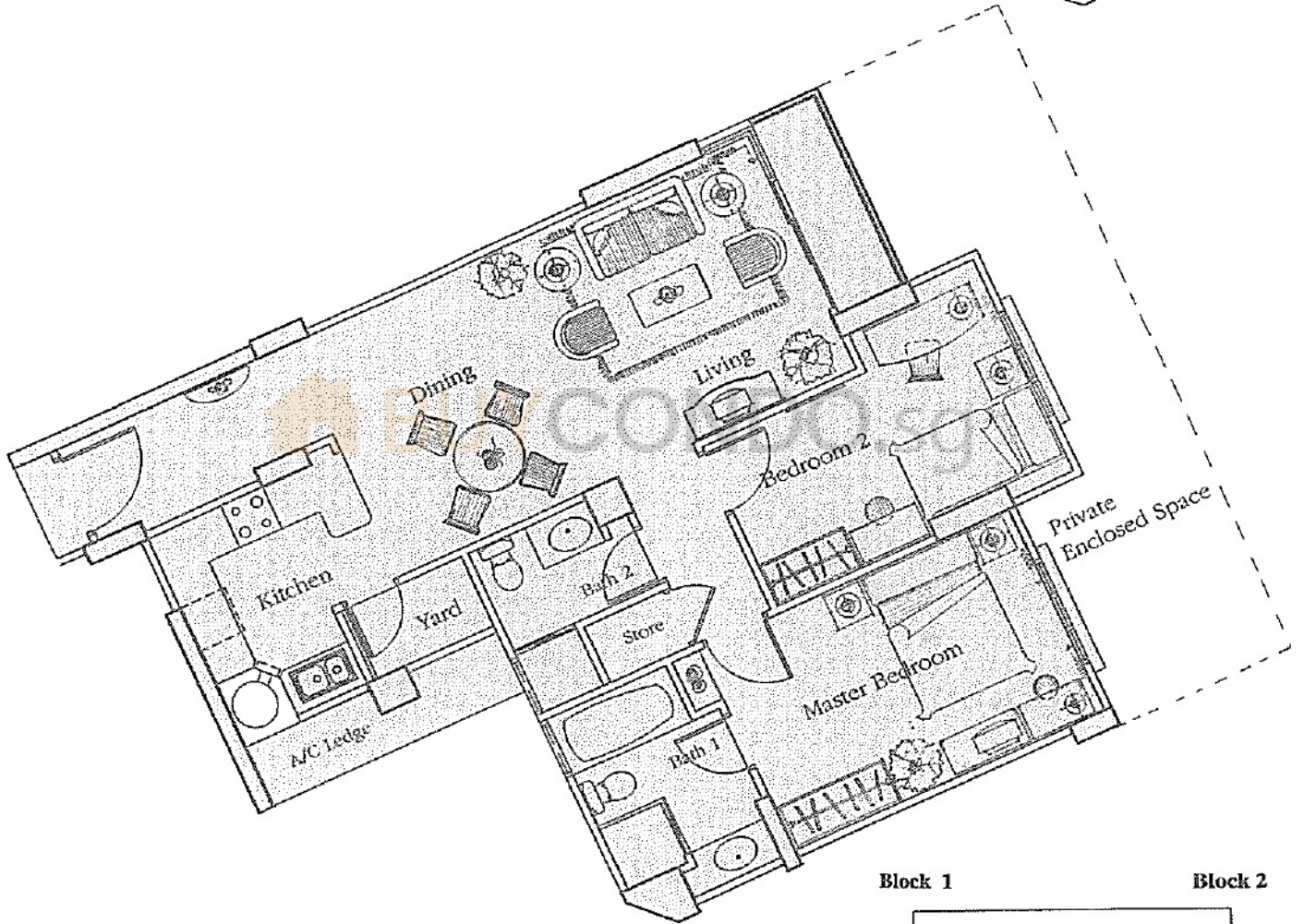
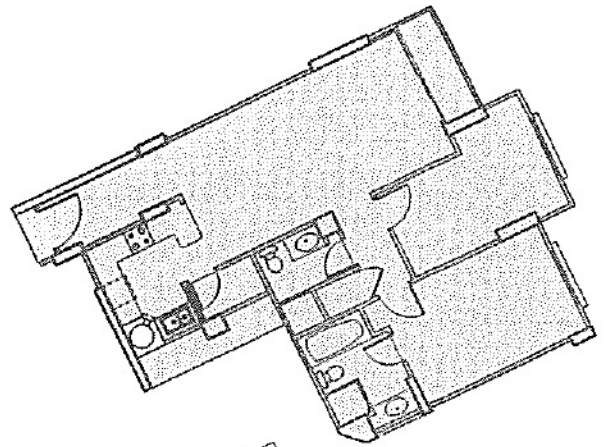
Type B3 (Blocks 1 & 2)

Type B3 (5th to 25th Storey)

Guide to major areas Approx. sq ft

Living/Dining	302
Master Bedroom	143
Bedroom 2	115
Kitchen	70
Planter	30
Others	233
TOTAL FLOOR AREA	893

Type B3(p) : Total floor area on 4th storey with PES is 1098 sq ft



While every reasonable care has been taken in preparing these floor plans, the developer and its agents cannot be held responsible for any inaccuracies. All plans are subject to any amendments approved or as may be approved by the relevant authority. Floor areas are approximate measurements and subject to final survey.



Type B1 (Block 2)

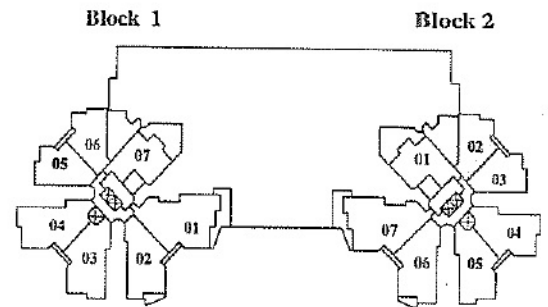
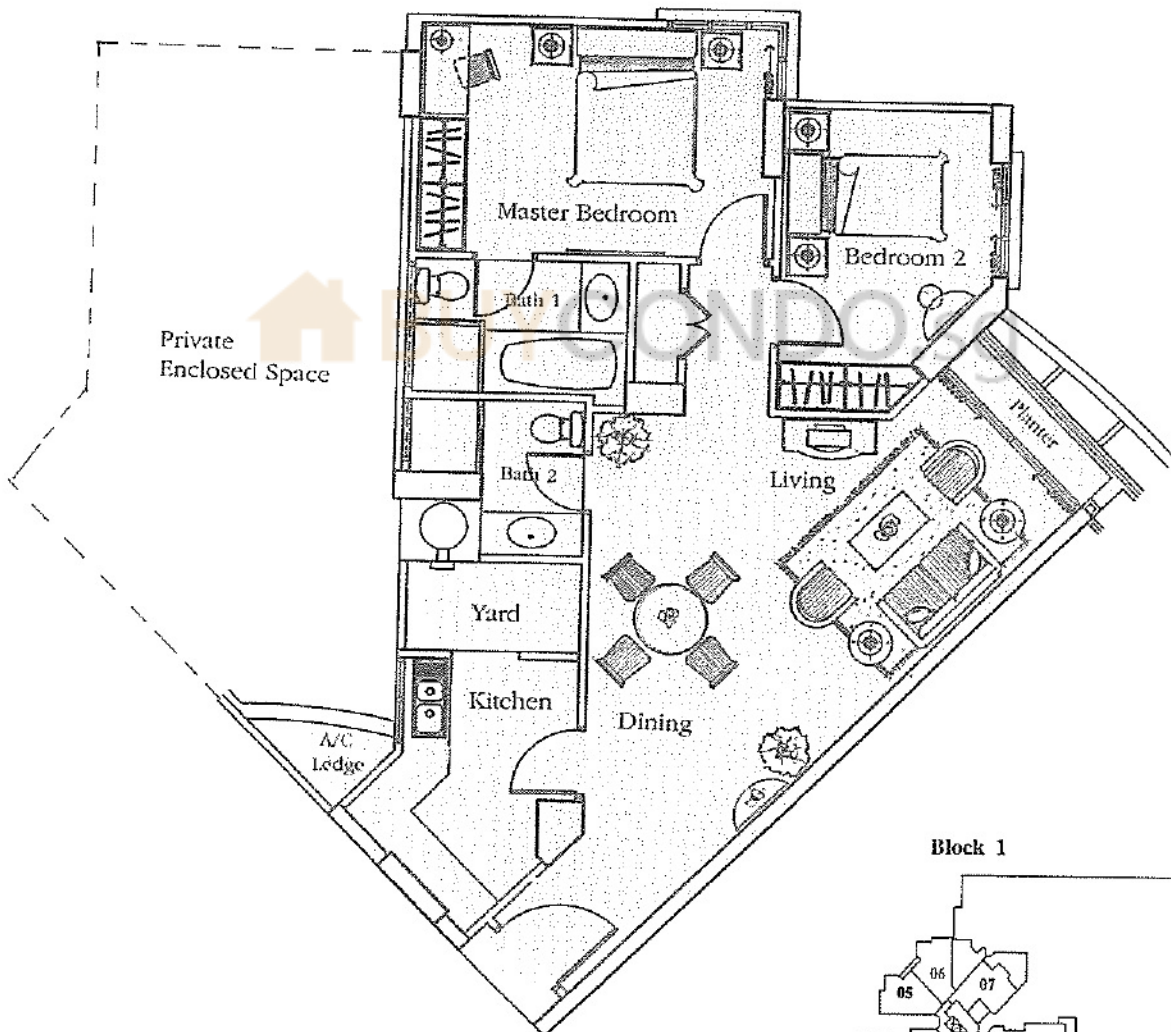
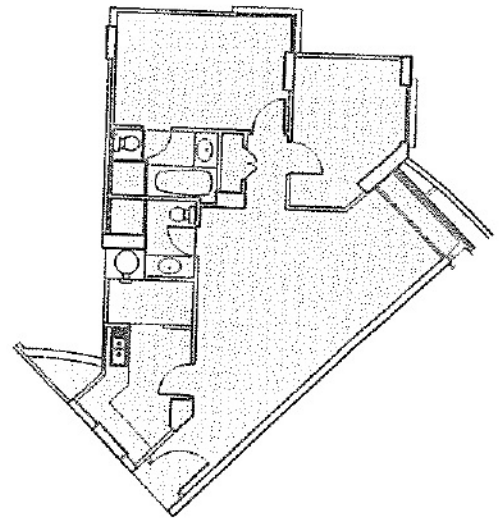
Type B1 (5th to 25th Storey)

Guide to major areas Approx. sq ft

Living/Dining	314
Master Bedroom	143
Bedroom 2	103
Kitchen	72
Planter	20
Others	209
TOTAL FLOOR AREA	861

Type B1(p) : Total floor area on 4th storey with PES is 1249 sq ft

Different layout in bath 2 for unit #04-02



While every reasonable care has been taken in preparing these floor plans, the developer and its agents cannot be held responsible for any inaccuracies. All plans are subject to any amendments approved or as may be approved by the relevant authority. Floor areas are approximate measurements and subject to final survey.

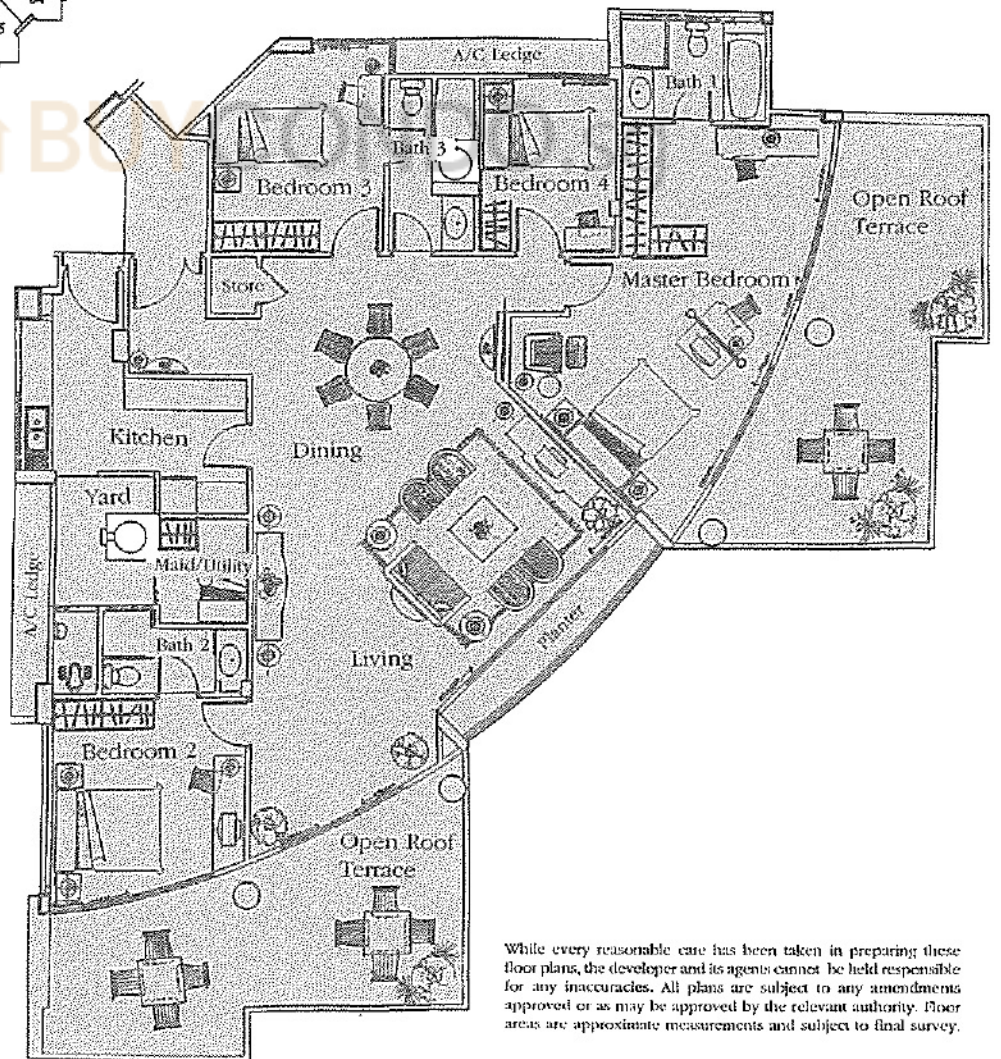
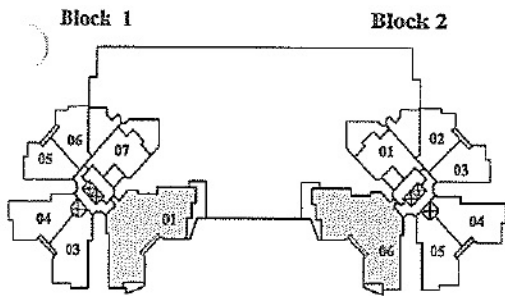
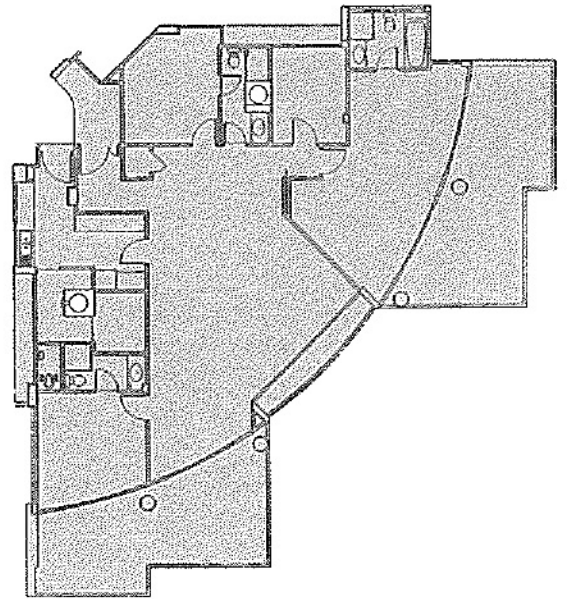


Type P(r) (Blocks 1 & 2)

Type P(r) (25th Storey)

Guide to major areas Approx. sq ft

Living/Dining	617
Master Bedroom	312
Bedroom 2	140
Bedroom 3	135
Bedroom 4	89
Kitchen	132
Planter	48
Open Roof Terrace	592
Others	486
TOTAL FLOOR AREA	2551



While every reasonable care has been taken in preparing these floor plans, the developer and its agents cannot be held responsible for any inaccuracies. All plans are subject to any amendments approved or as may be approved by the relevant authority. Floor areas are approximate measurements and subject to final survey.

Type C2 (Blocks 1 & 2)

Type C2 (3rd to 25th Storey)

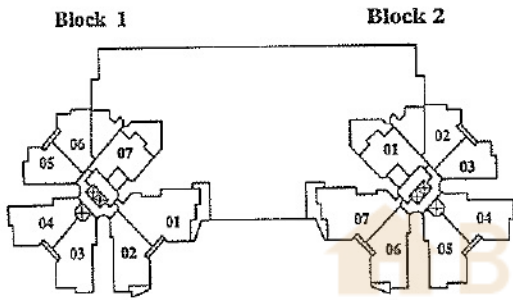
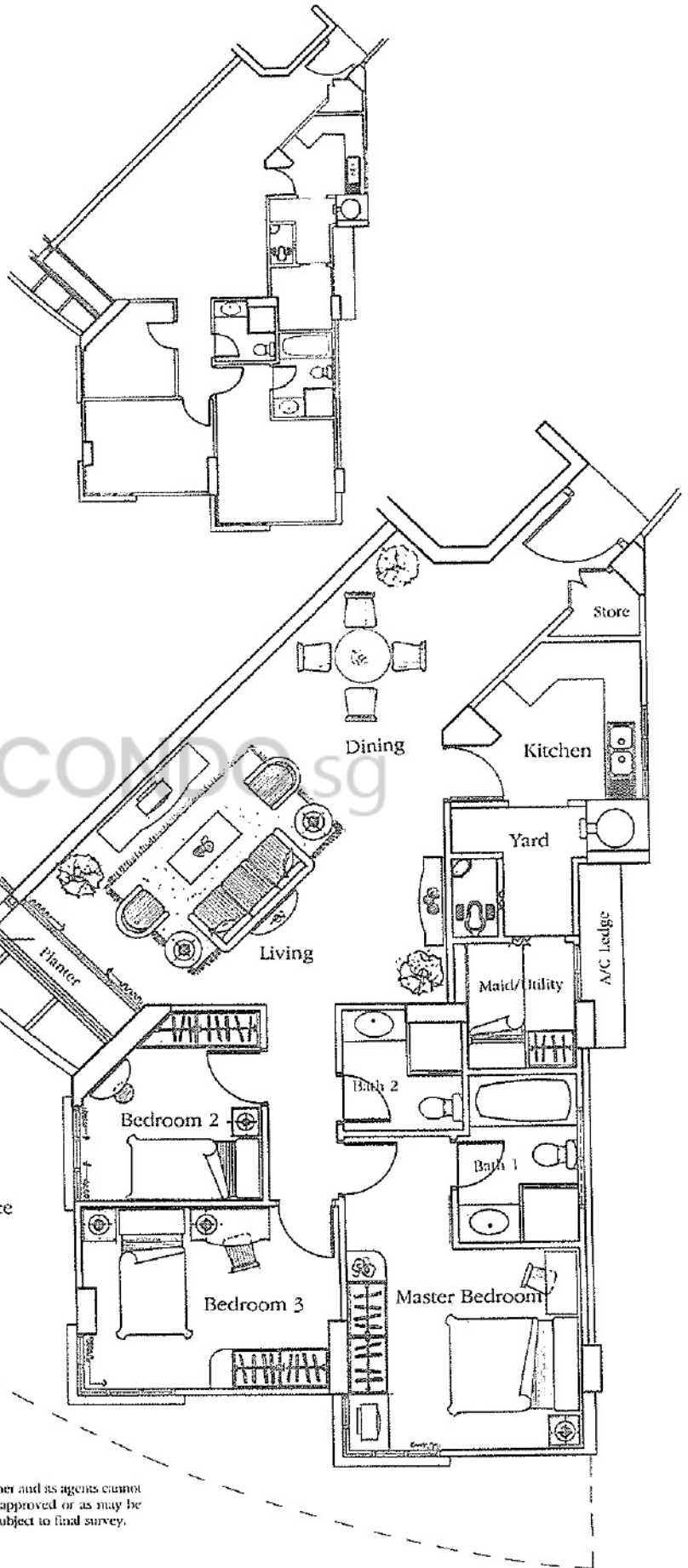
Guide to major areas Approx. sq ft

Living/Dining	402
Master Bedroom	157
Bedroom 2	79
Bedroom 3	121
Kitchen	67
Planter	20
Others	306
TOTAL FLOOR AREA	1152

Type C2(b): Total floor area on 2nd storey with balcony is 1184 sq ft

Type C2(p): Total floor area on 1st storey with PES is 1550 sq ft

Different window layout in master bedroom from 1st to 3rd storey



Balcony on 2nd storey

Private Enclosed Space

While every reasonable care has been taken in preparing these floor plans, the developer and its agents cannot be held responsible for any inaccuracies. All plans are subject to any amendments approved or as may be approved by the relevant authority. Floor areas are approximate measurements and subject to final survey.

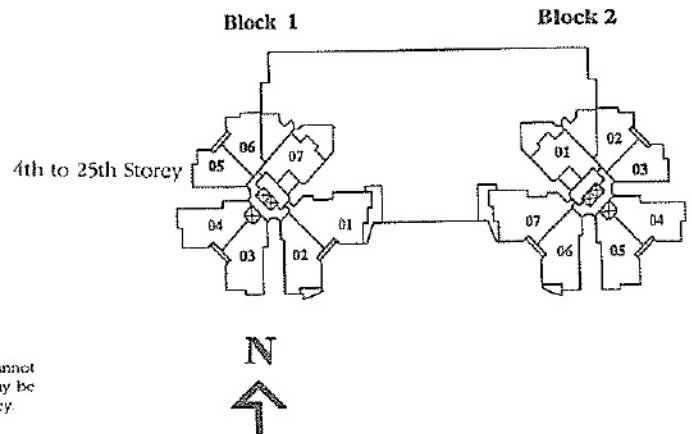
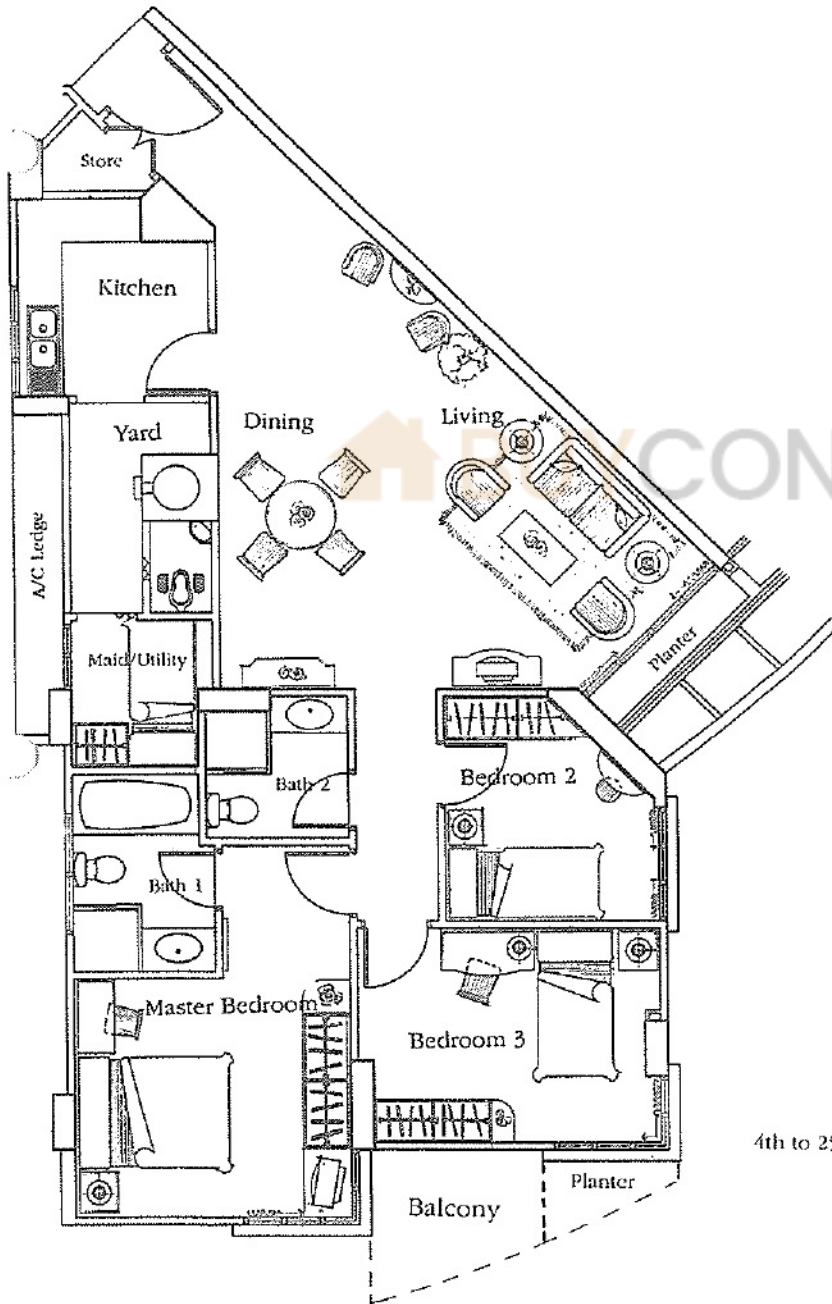
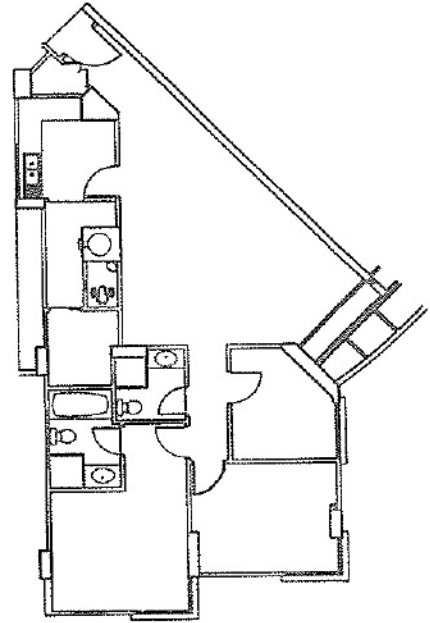
Type C1 (Blocks 1 & 2)

Type C1 (5th to 24th Storey)

Guide to major areas Approx. sq ft

Living/Dining	385
Master Bedroom	157
Bedroom 2	79
Bedroom 3	120
Kitchen	67
Planter	20
Others	313
TOTAL FLOOR AREA	1141

Type C1(b): Total floor area on 4th storey with balcony and planter is 1227 sq ft



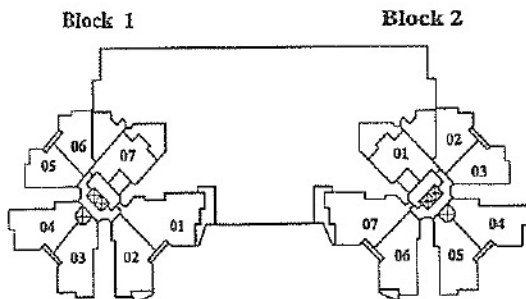
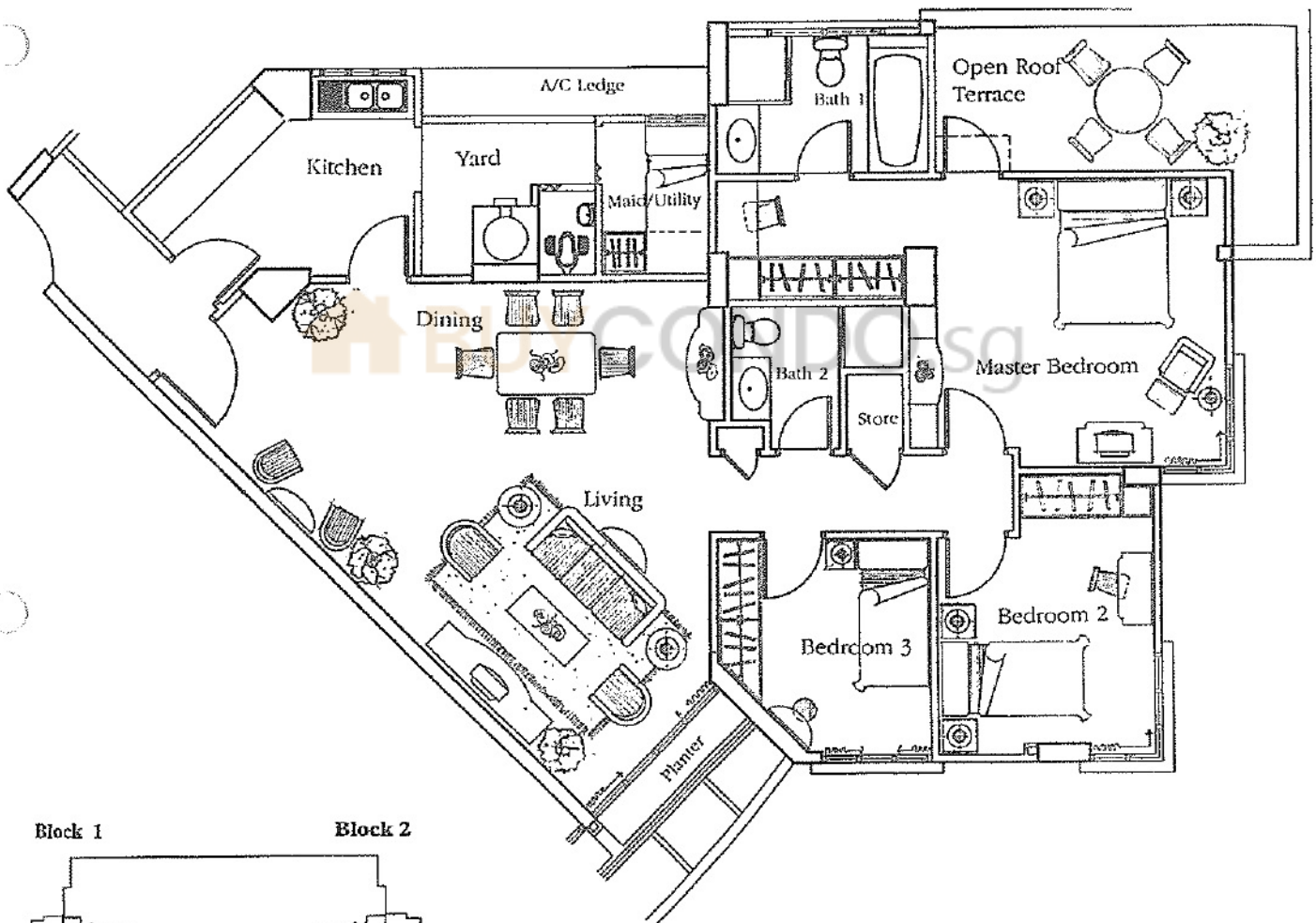
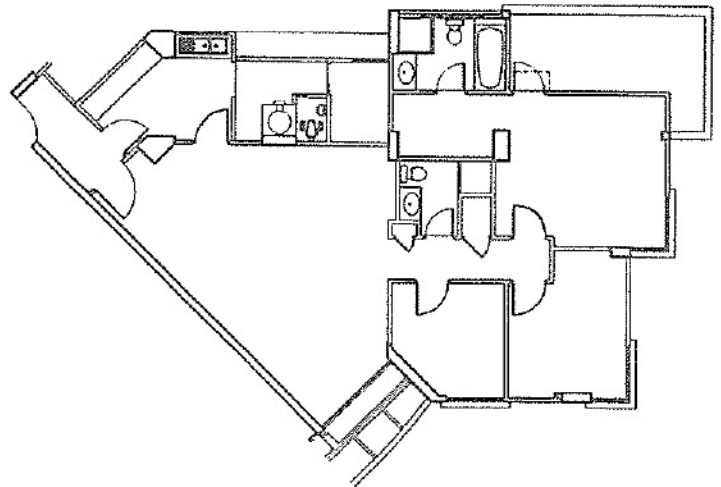
While every reasonable care has been taken in preparing these floor plans, the developer and its agents cannot be held responsible for any inaccuracies. All plans are subject to any amendments approved or as may be approved by the relevant authority. Floor areas are approximate measurements and subject to final survey.

Type C4(r) (Blocks 1 & 2)

Type C4(r) (24th Storey)

Guide to major areas Approx. sq ft

Living/Dining	440
Master Bedroom	222
Bedroom 2	113
Bedroom 3	85
Kitchen	90
Planter	20
Open Roof Terrace	118
Others	376
TOTAL FLOOR AREA	1464



While every reasonable care has been taken in preparing these floor plans, the developer and its agents cannot be held responsible for any inaccuracies. All plans are subject to any amendments approved or as may be approved by the relevant authority. Floor areas are approximate measurements and subject to final survey.

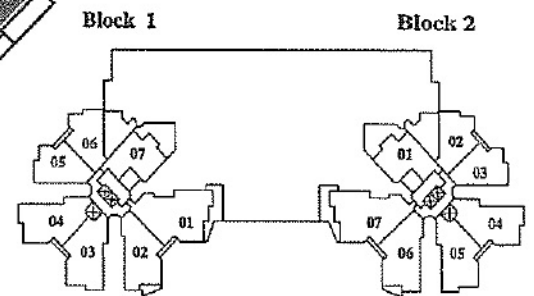
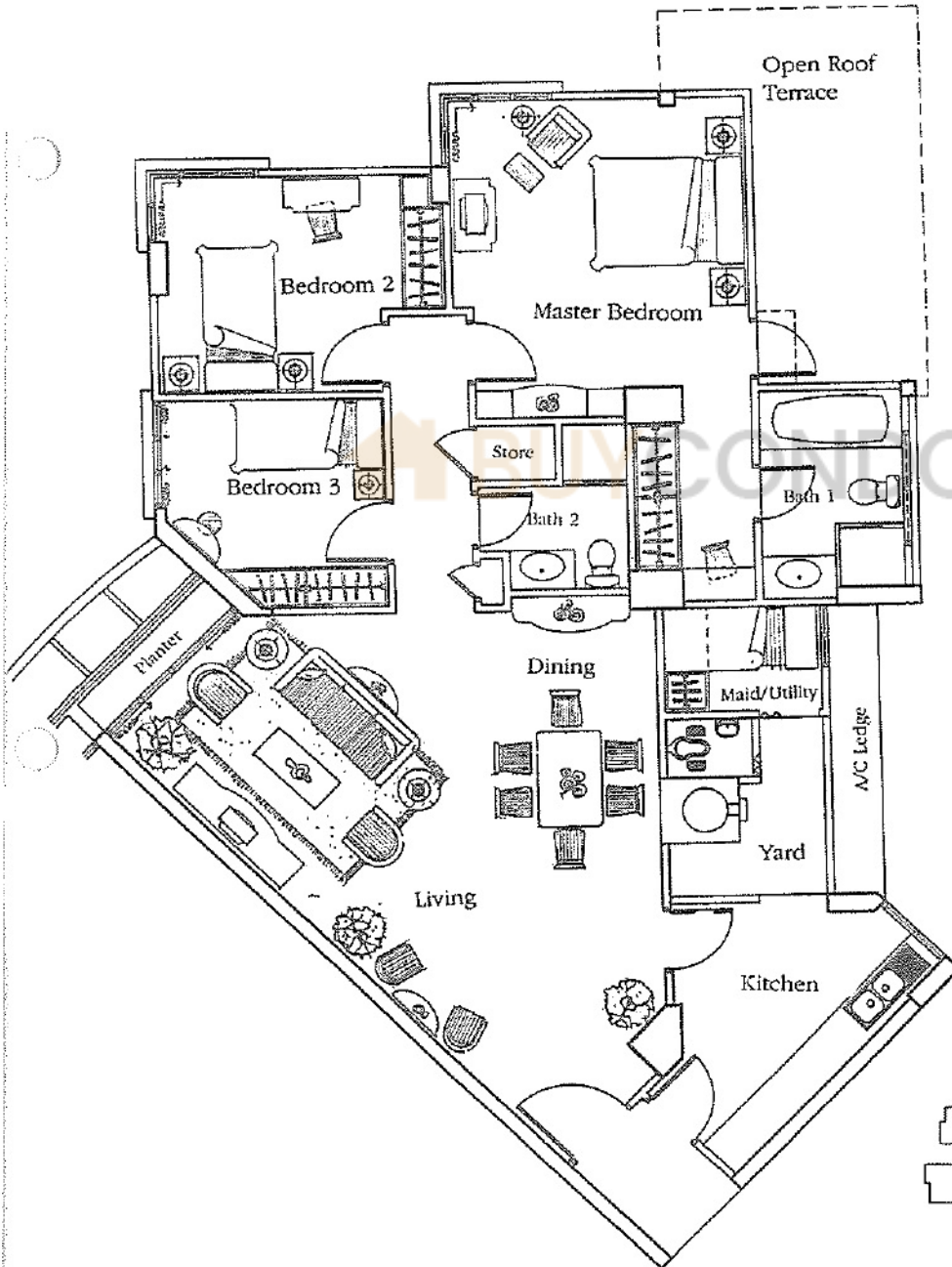
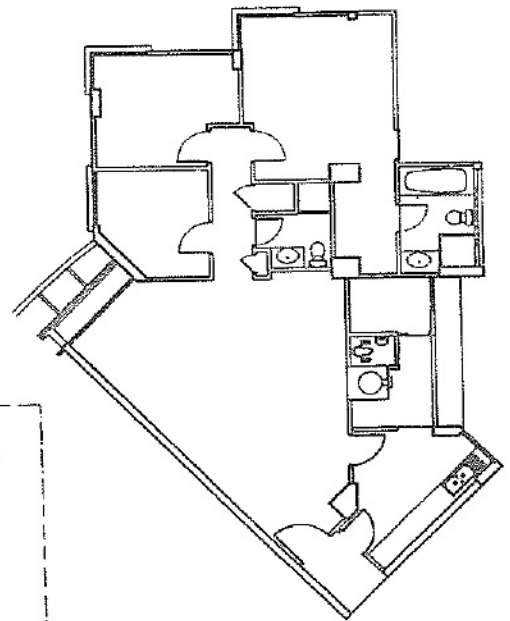
Type C3 (Block 1)

Type C3 (25th Storey)

Guide to major areas Approx. sq ft

Living/Dining	440
Master Bedroom	217
Bedroom 2	114
Bedroom 3	85
Kitchen	95
Planter	20
Others	364
TOTAL FLOOR AREA	1335

Type C3(r) : Total floor area on 24th storey with open roof terrace space is 1453 sq ft



While every reasonable care has been taken in preparing these floor plans, the developer and its agents cannot be held responsible for any inaccuracies. All plans are subject to any amendments approved or as may be approved by the relevant authority. Floor areas are approximate measurements and subject to final survey.

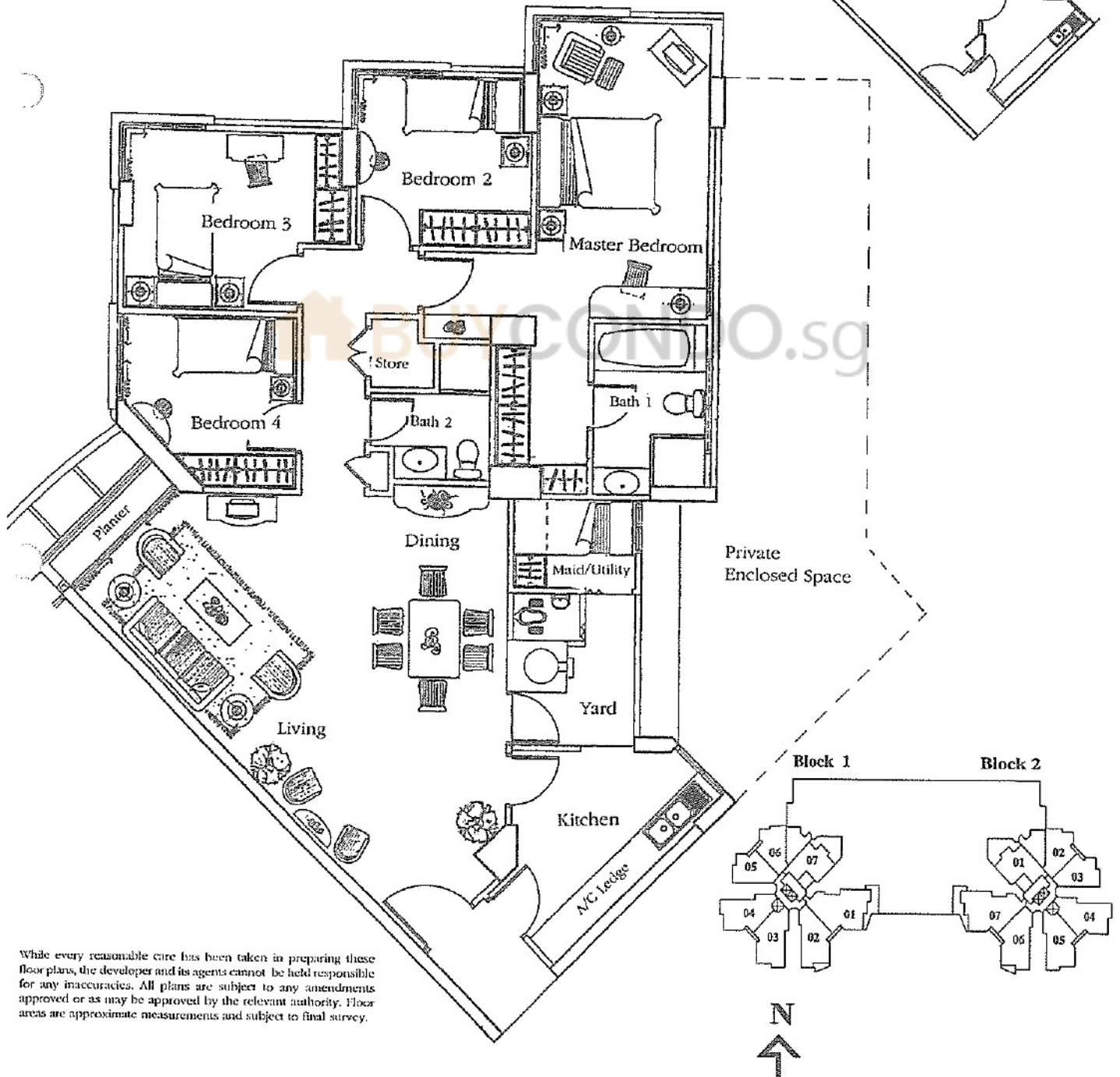
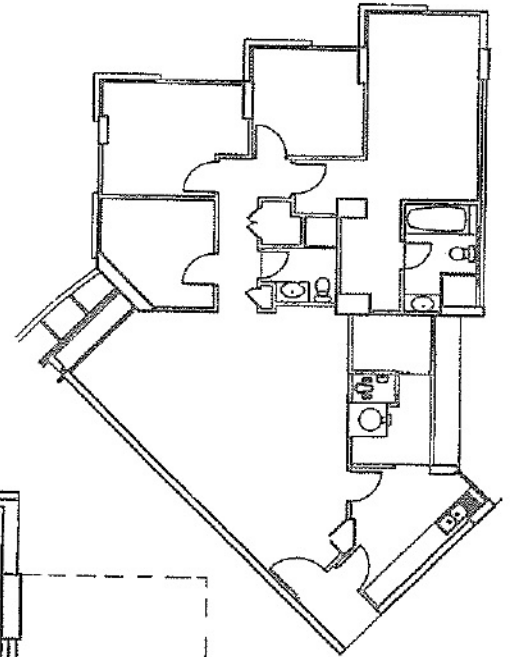
Type D1 (Block 1)

Type D1 (5th to 23th Storey)

Guide to major areas Approx. sq ft

Living/Dining	450
Master Bedroom	227
Bedroom 2	90
Bedroom 3	114
Bedroom 4	85
Kitchen	95
Planter	20
Others	372
TOTAL FLOOR AREA	1453

Type D1(p): Total floor area on 4th storey with PES is 1819 sq ft



While every reasonable care has been taken in preparing these floor plans, the developer and its agents cannot be held responsible for any inaccuracies. All plans are subject to any amendments approved or as may be approved by the relevant authority. Floor areas are approximate measurements and subject to final survey.

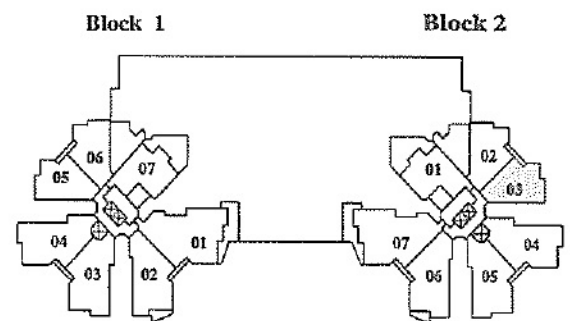
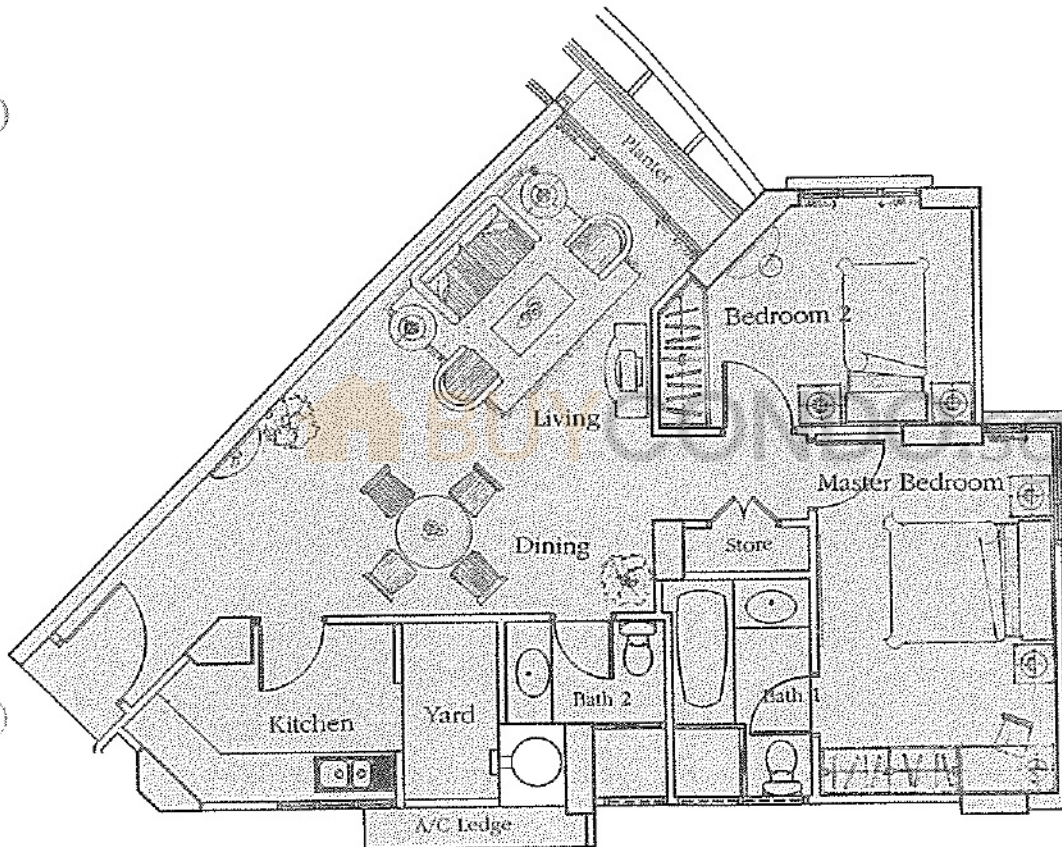
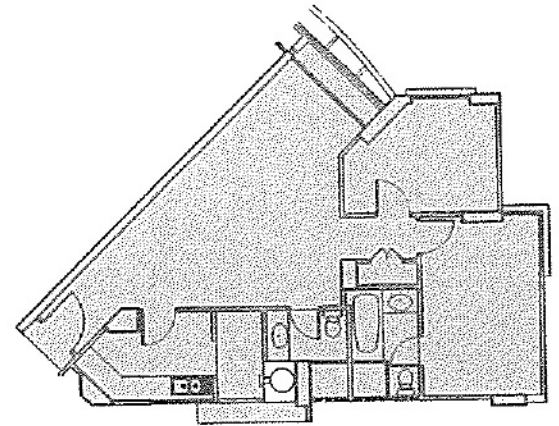
Type B2 (Block 2)

Type B2 (4th to 25th Storey)

Guide to major areas Approx. sq ft

Living/Dining	292
Master Bedroom	143
Bedroom 2	103
Kitchen	66
Planter	20
Others	237
TOTAL FLOOR AREA	861

Different layout in bath 2 for unit #04-03



While every reasonable care has been taken in preparing these floor plans, the developer and its agents cannot be held responsible for any inaccuracies. All plans are subject to any amendments approved or as may be approved by the relevant authority. Floor areas are approximate measurements and subject to final survey.

