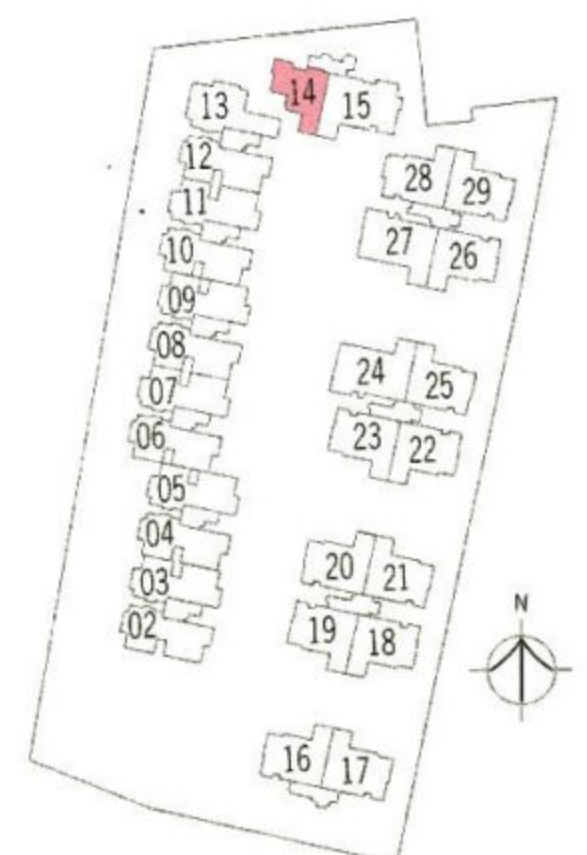
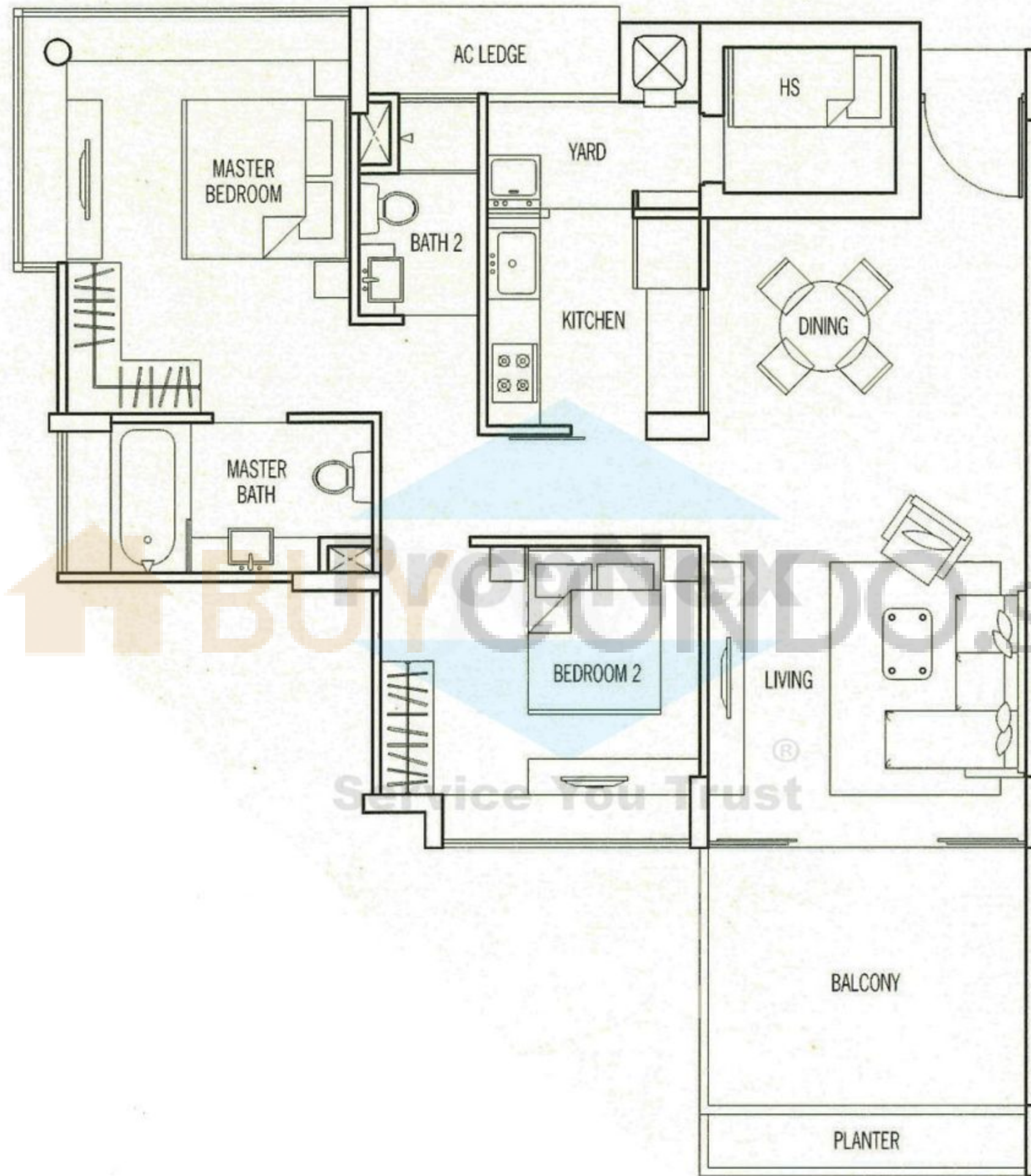


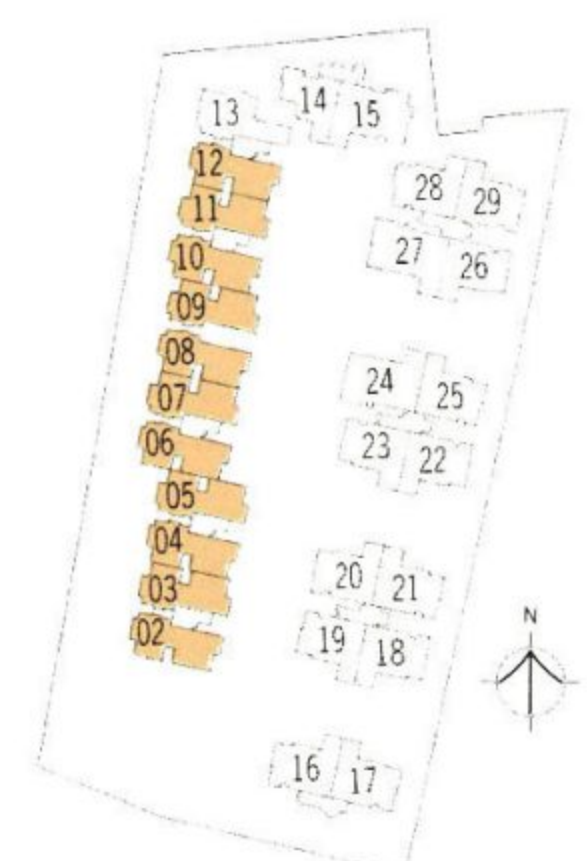
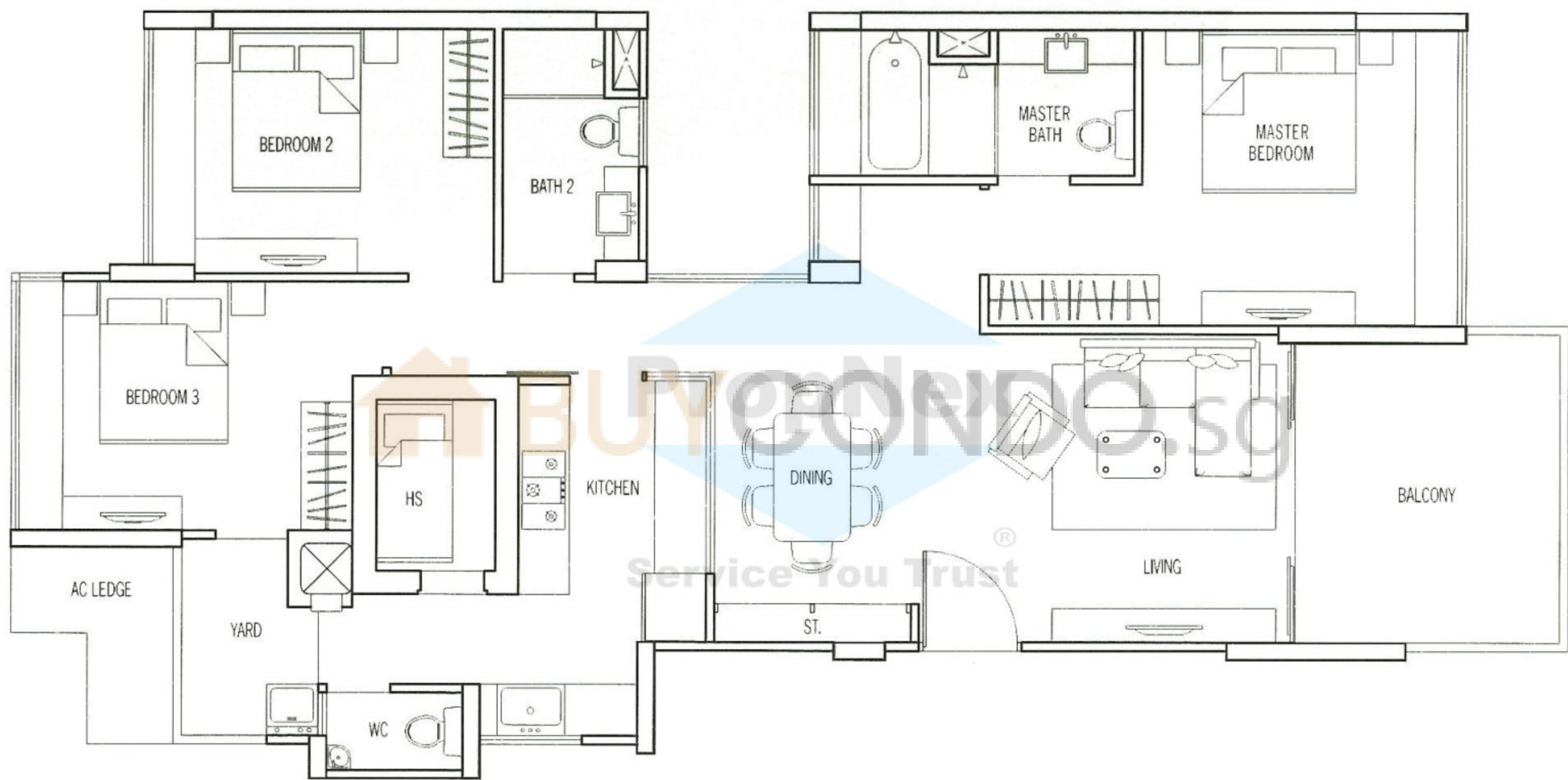
UNIT TYPE - A1

2 - Bedroom Apartment
105 sq m/ 1130 sq ft
2nd - 5th Storey



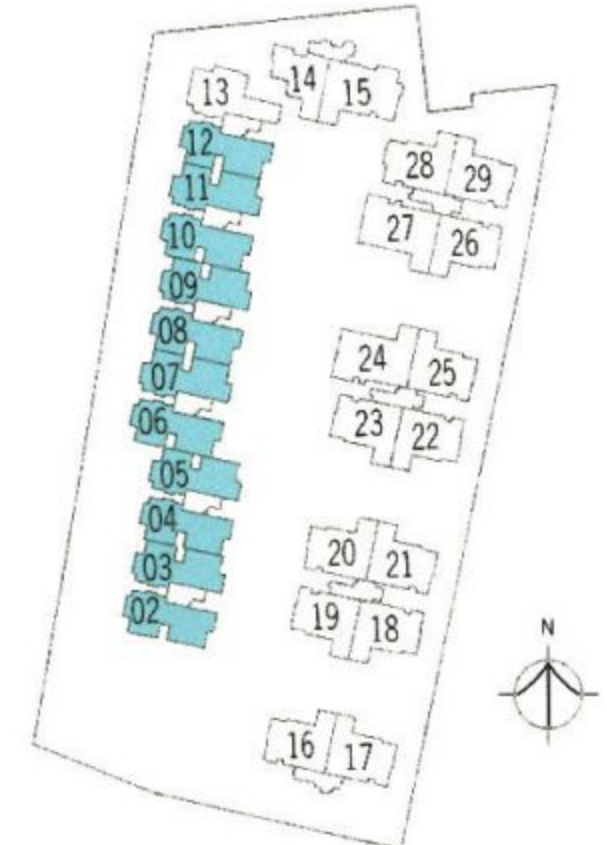
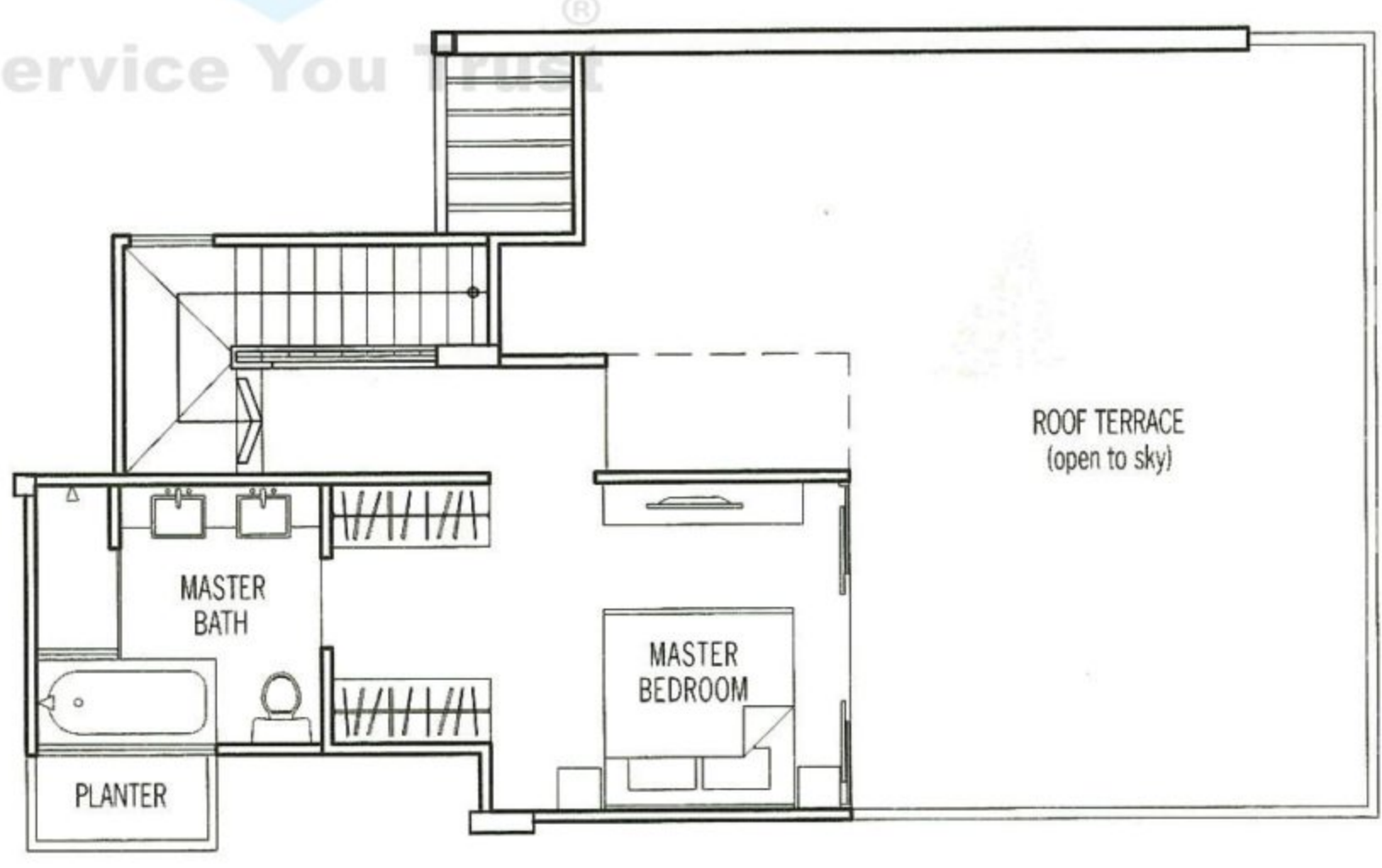
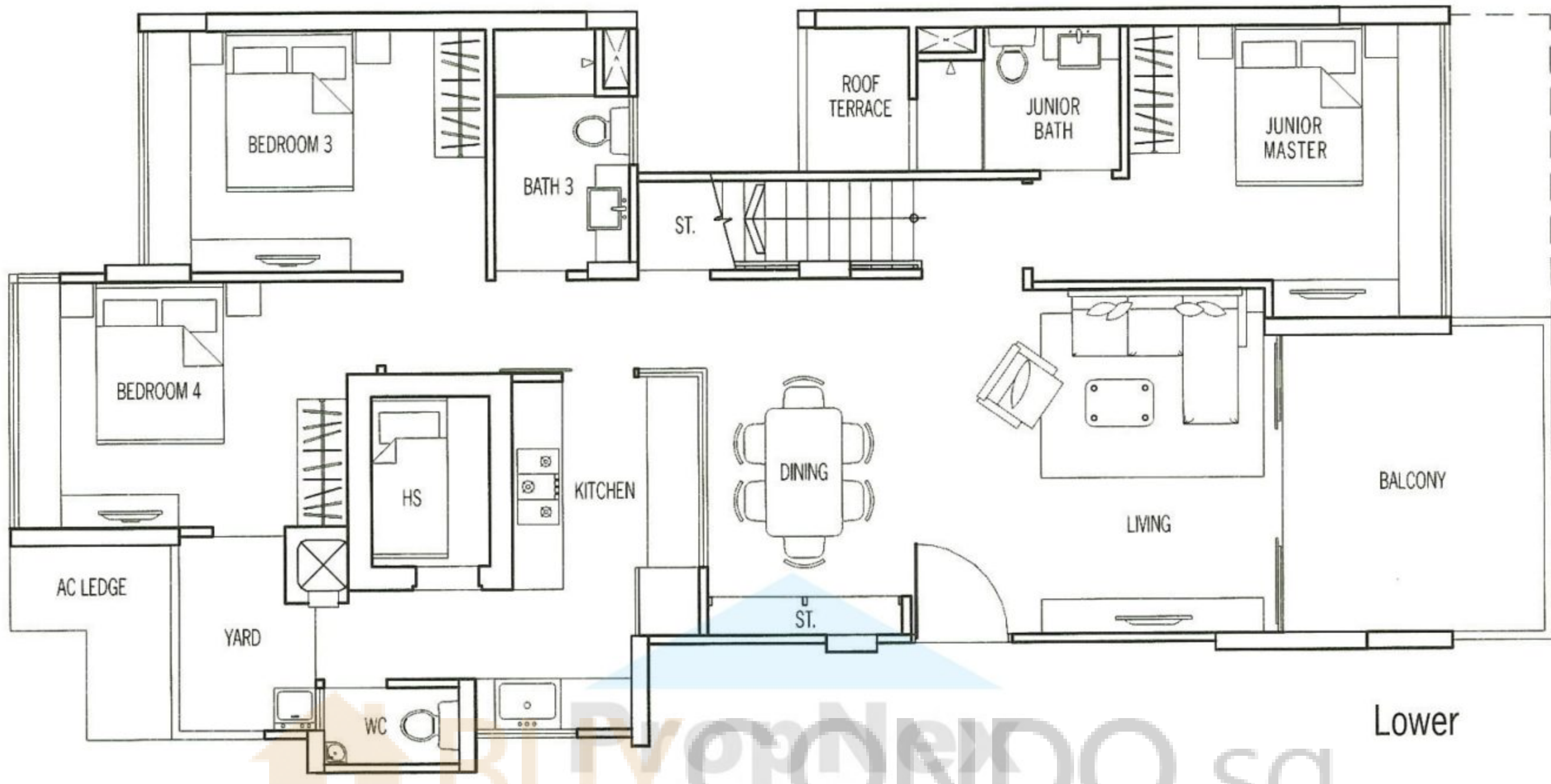
UNIT TYPE - B1

3 - Bedroom Apartment
124 sq m/ 1335 sq ft
2nd - 4th Storey



UNIT TYPE - B1P

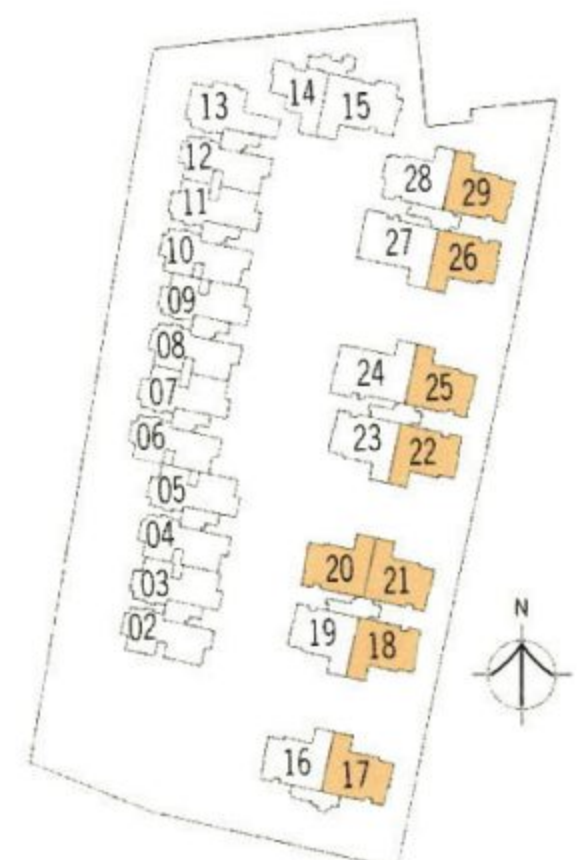
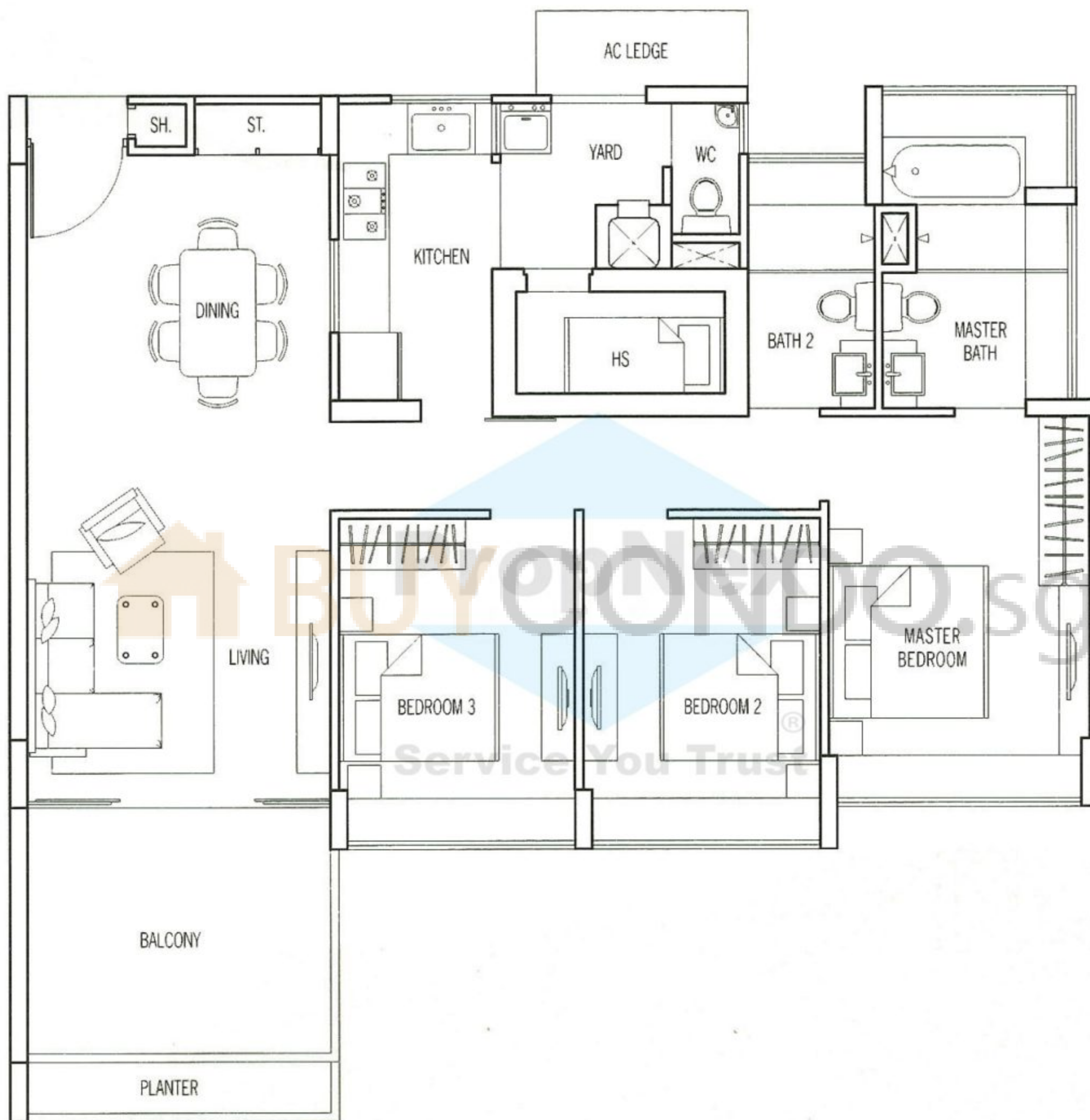
4 - Bedroom Penthouse
207 sq m / 2228 sq ft
5th Storey



The above plans are subject to change as may be approved by the relevant authority. Areas are approximate measurements and subject to final survey. Plans are not to scale.

UNIT TYPE - B2

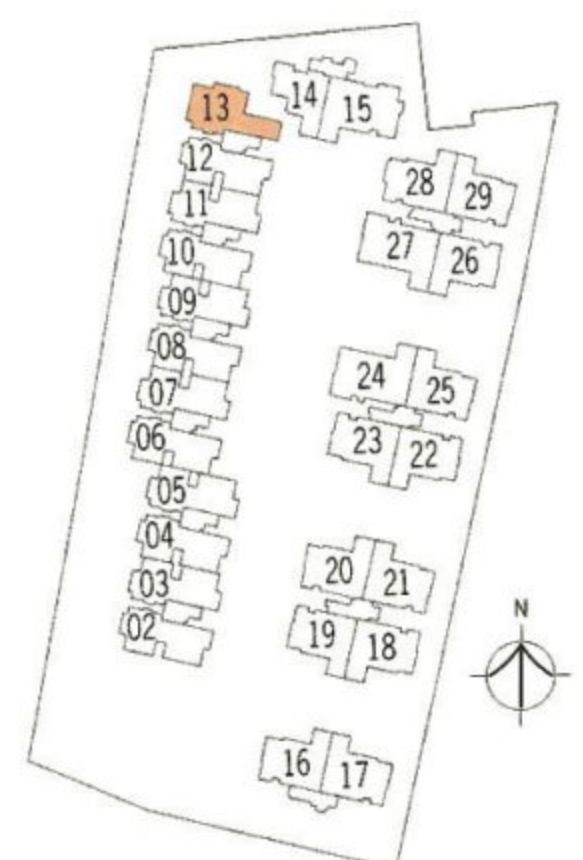
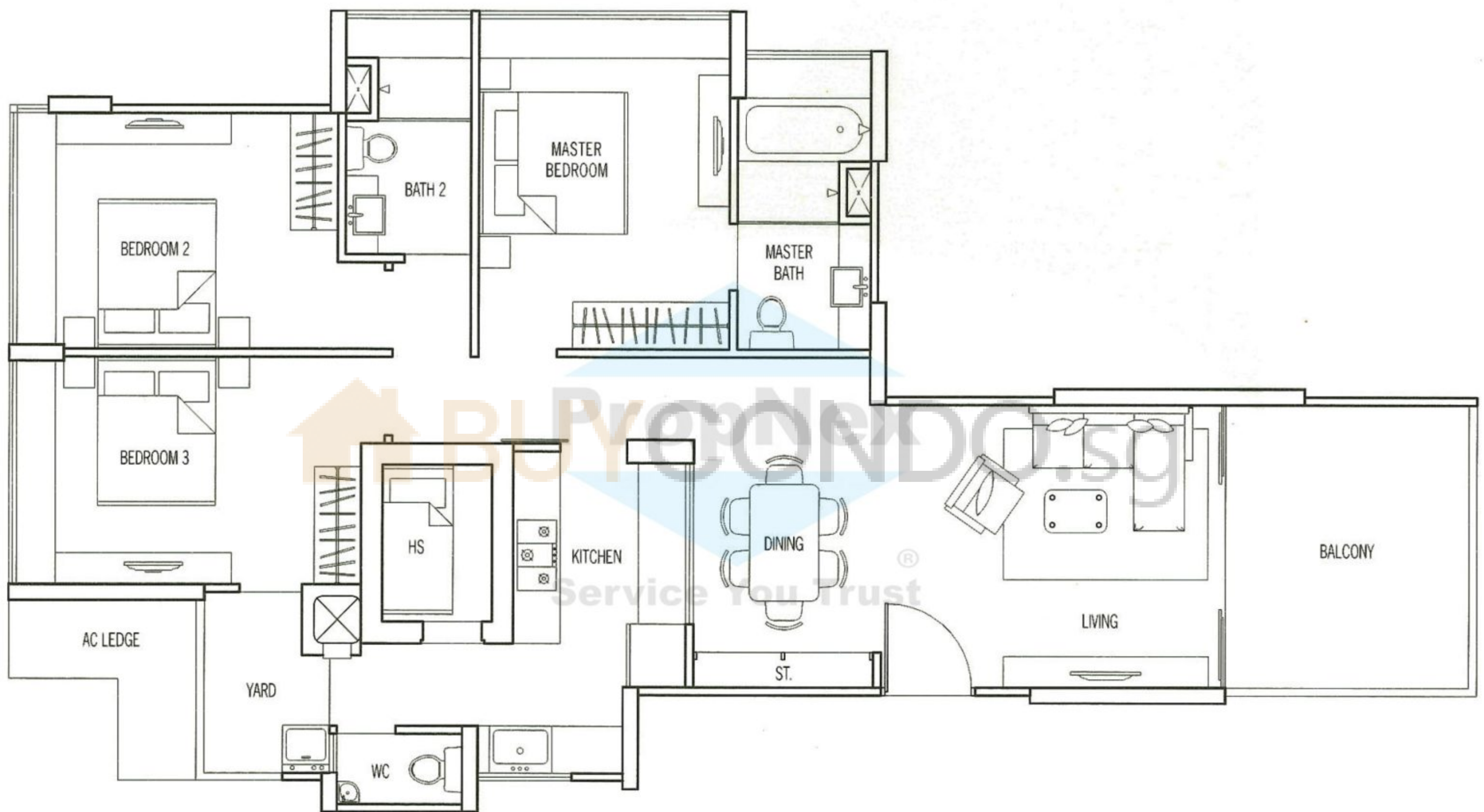
3 - Bedroom Apartment
122 sq m / 1313 sq ft
2nd - 4th Storey



The above plans are subject to change as may be approved by the relevant authority. Areas are approximate measurements and subject to final survey. Plans are not to scale.

UNIT TYPE - B3

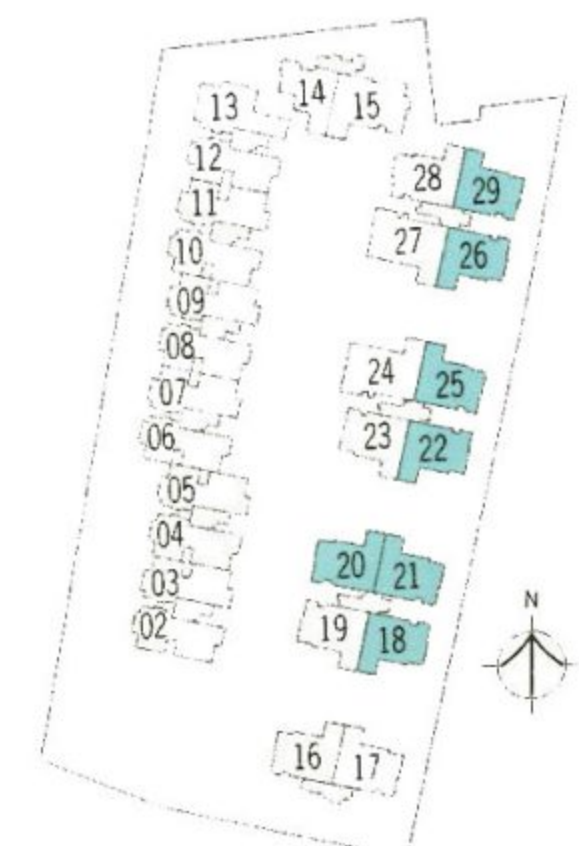
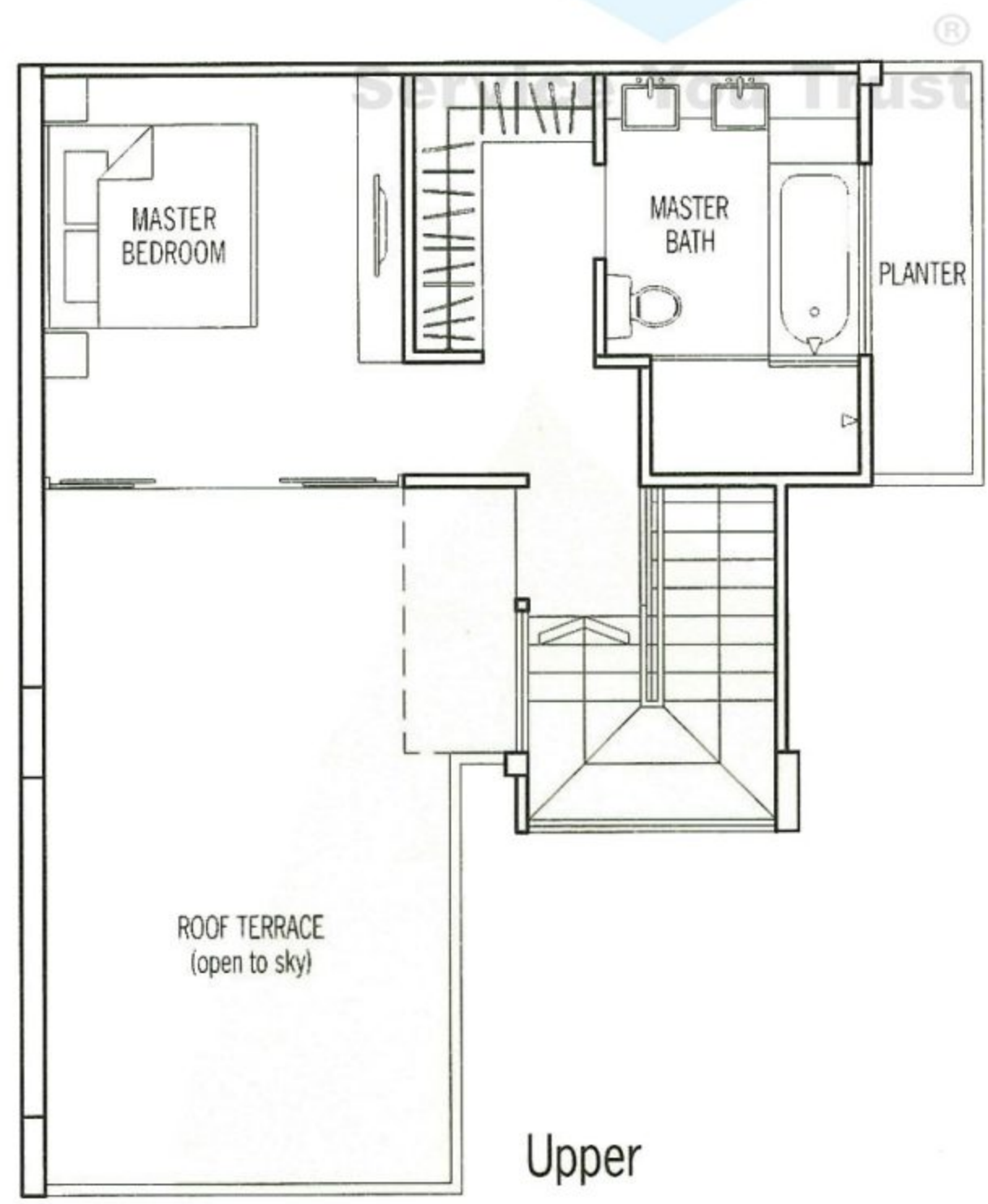
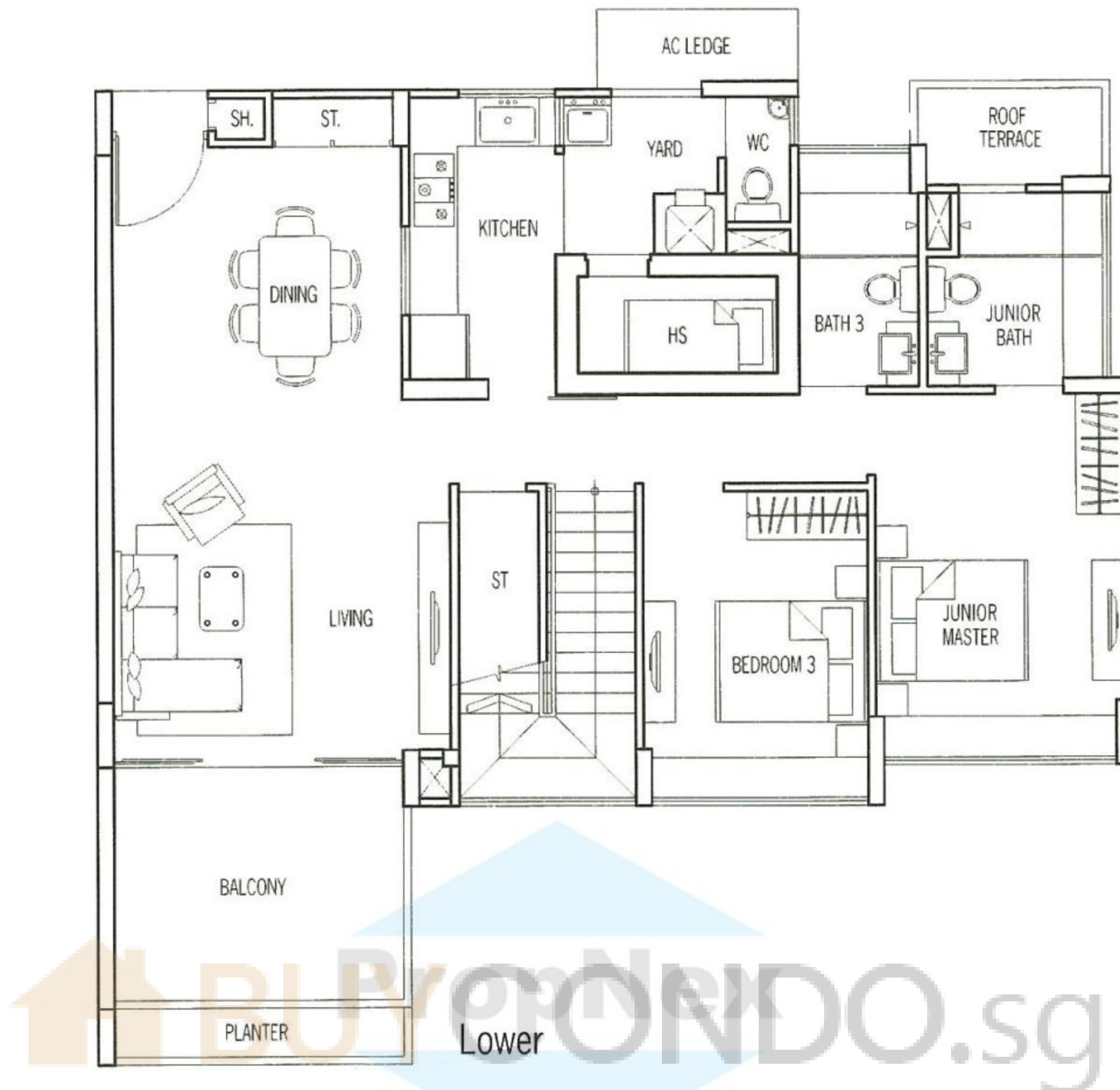
3 - Bedroom Apartment
124 sq m / 1335 sq ft
2nd - 4th Storey



The above plans are subject to change as may be approved by the relevant authority. Areas are approximate measurements and subject to final survey. Plans are not to scale.

UNIT TYPE - B2P

3 - Bedroom Penthouse
185 sq m / 1991 sq ft
5th Storey



The above plans are subject to change as may be approved by the relevant authority. Areas are approximate measurements and subject to final survey. Plans are not to scale.