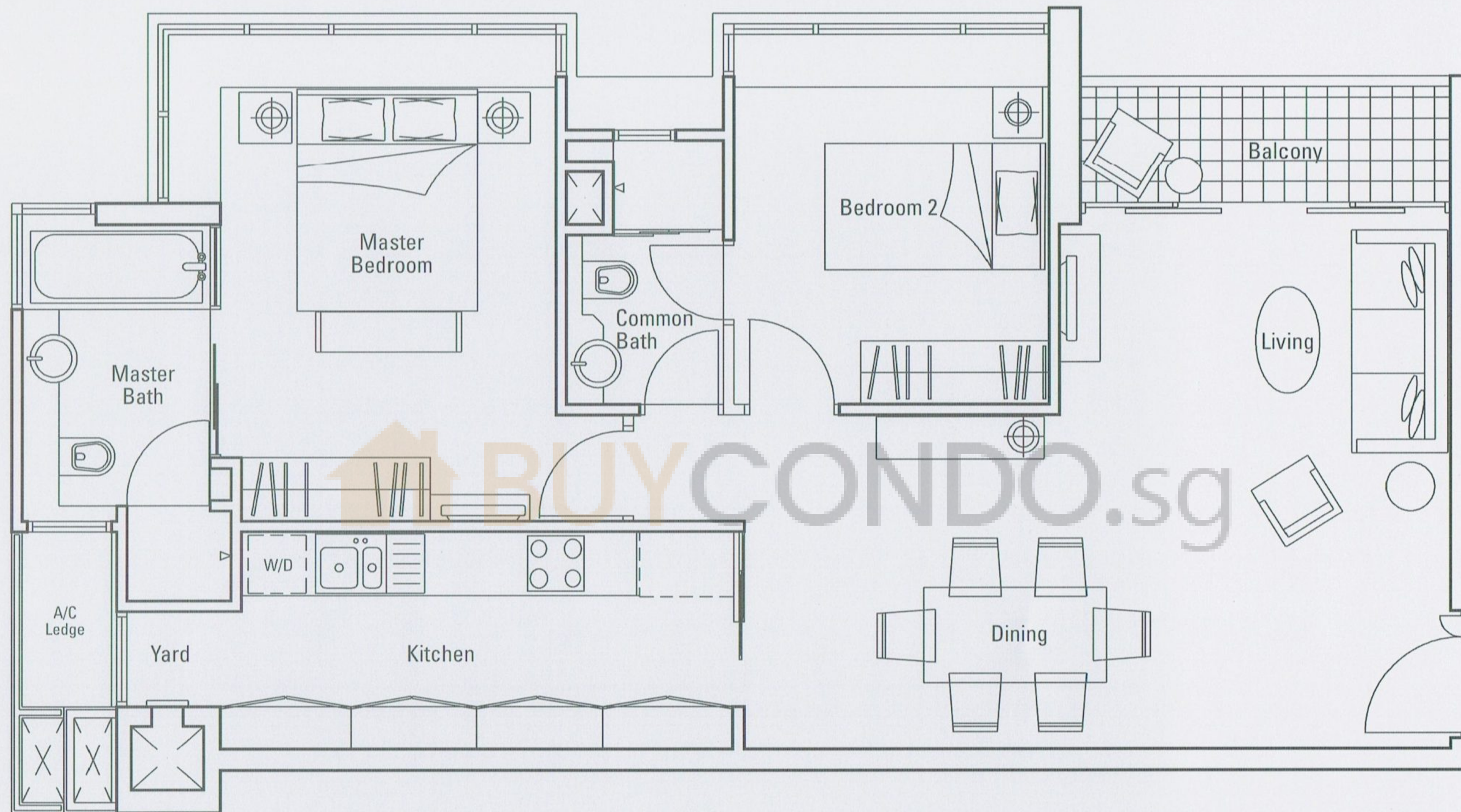


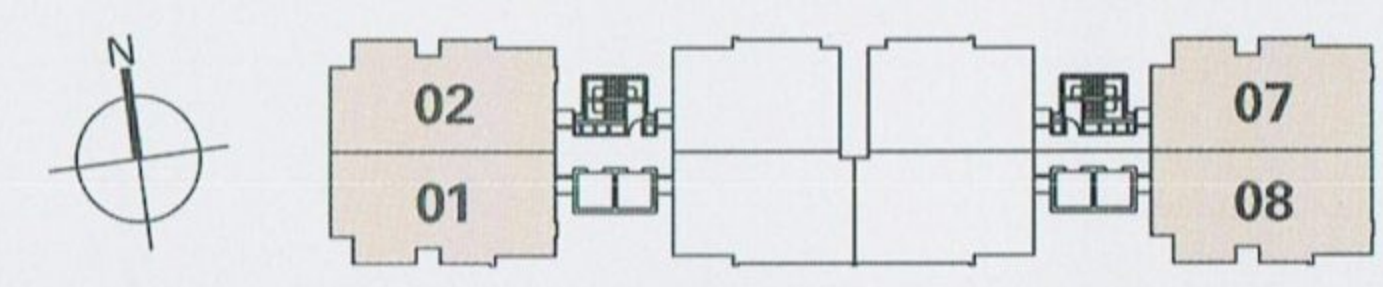
type B

2-bedroom



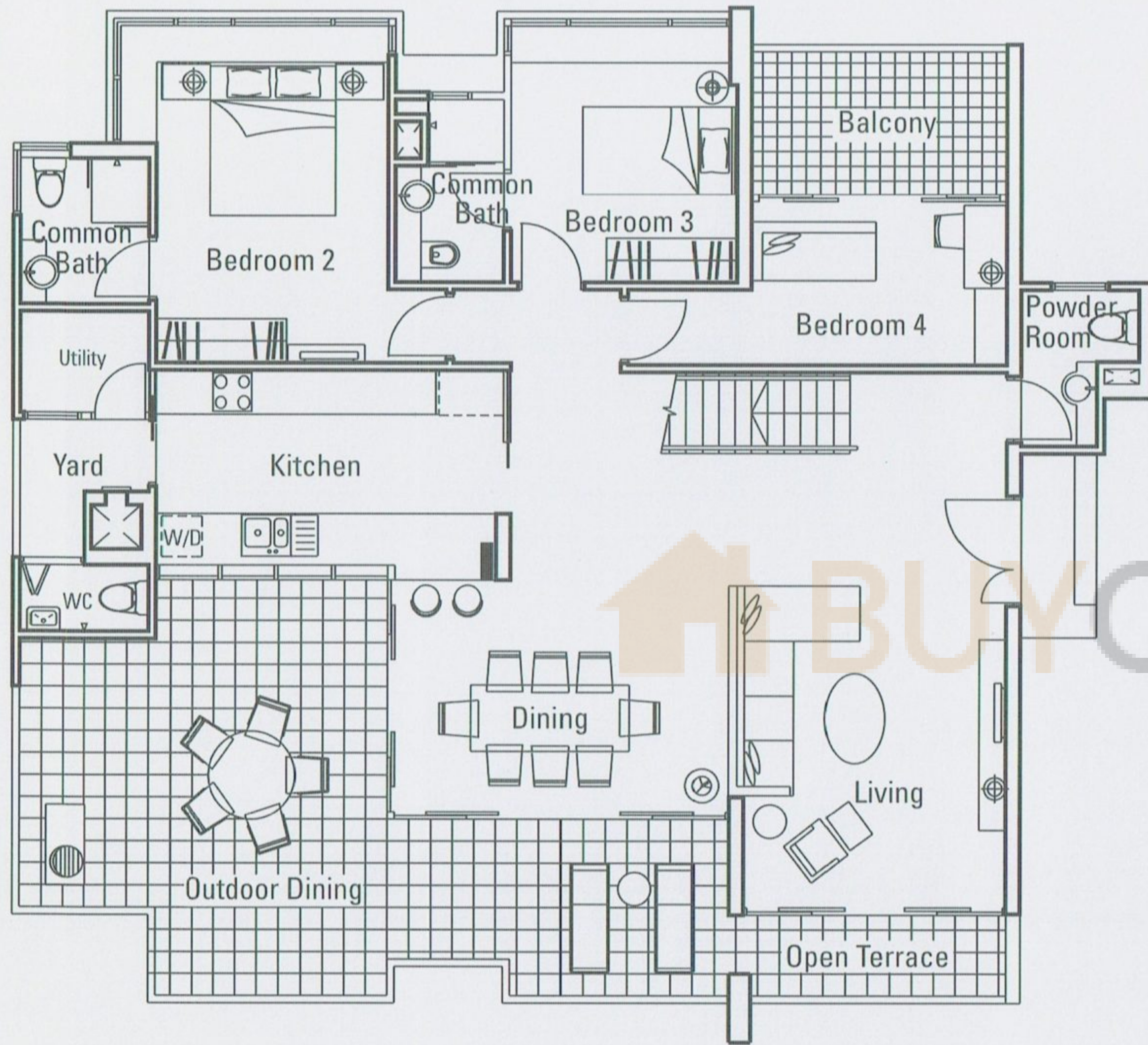
88 sq m / 947 sq ft

#03-01 to #12-01, #03-02 to #12-02, #03-07 to #12-07, #03-08 to #12-08

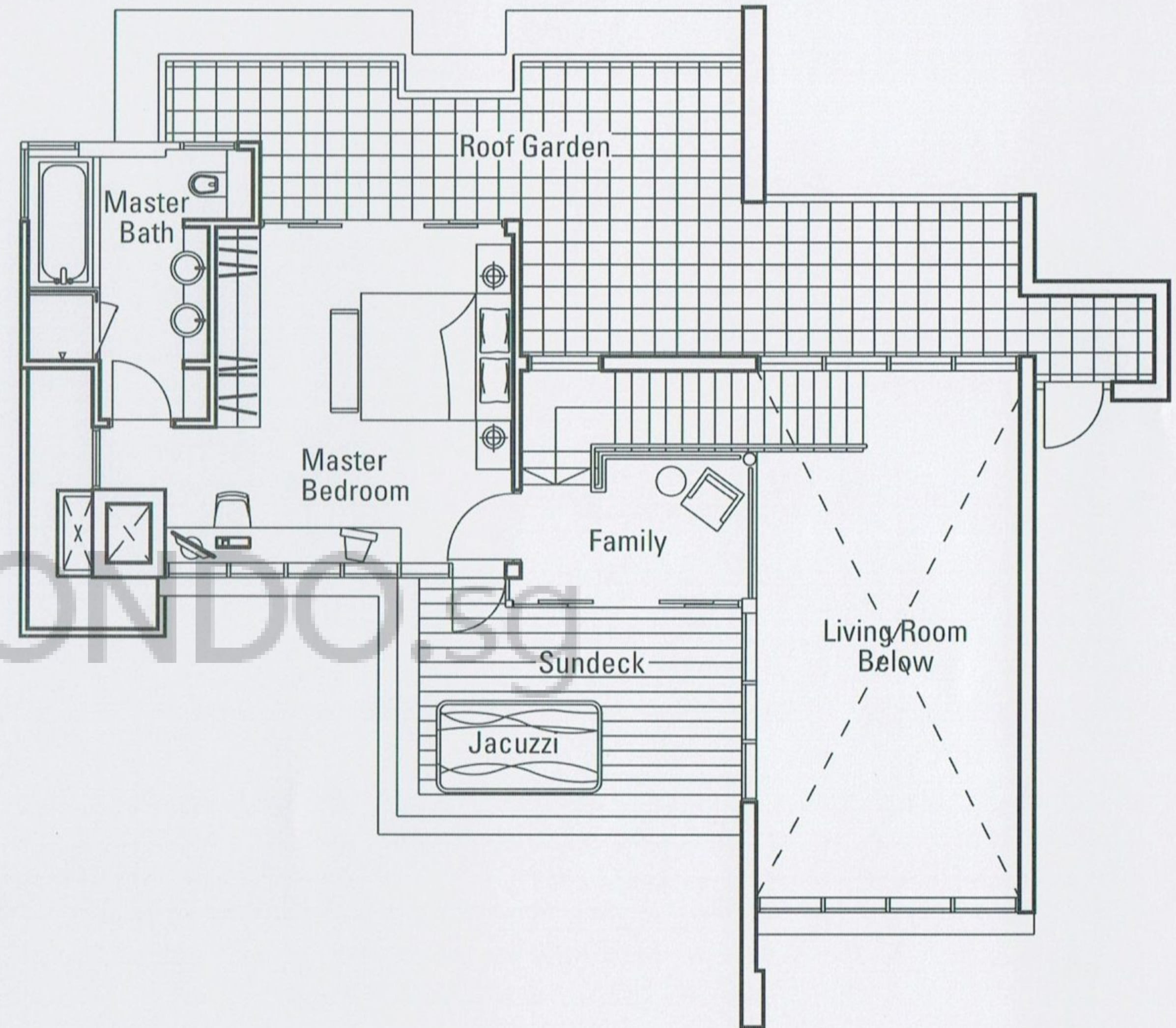


The above plan is subject to change as may be approved by the relevant authority. Areas are approximate measurements and subject to final survey.

penthouse



Lower floor

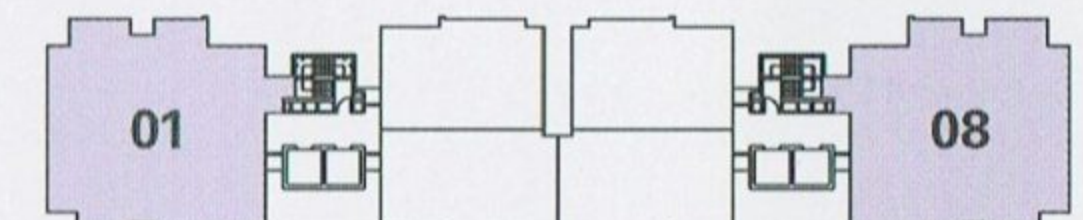


Upper floor

298 sq m / 3208 sq ft

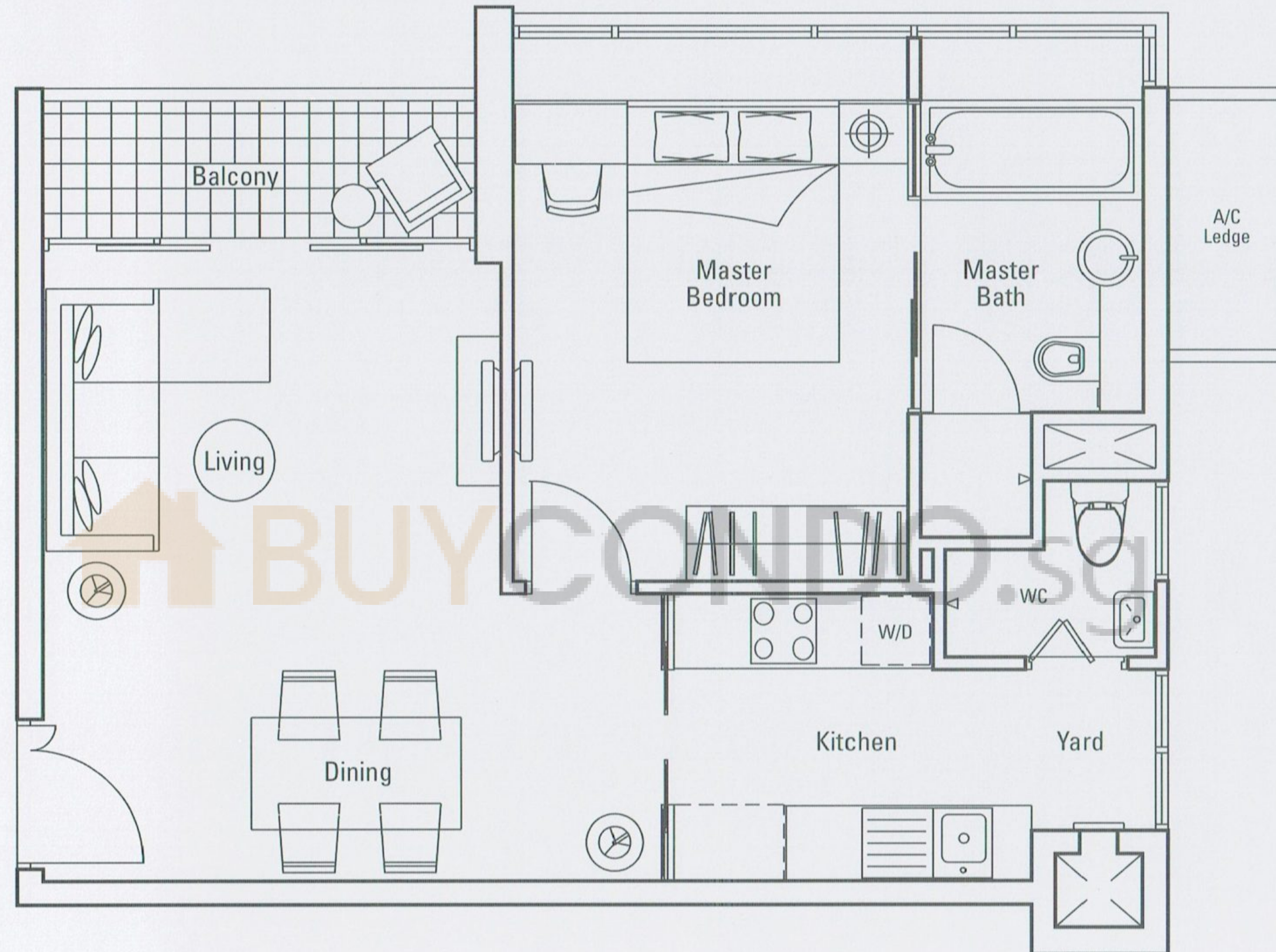
#13-01, #13-08

The above plan is subject to change as may be approved by the relevant authority. Areas are approximate measurements and subject to final survey.



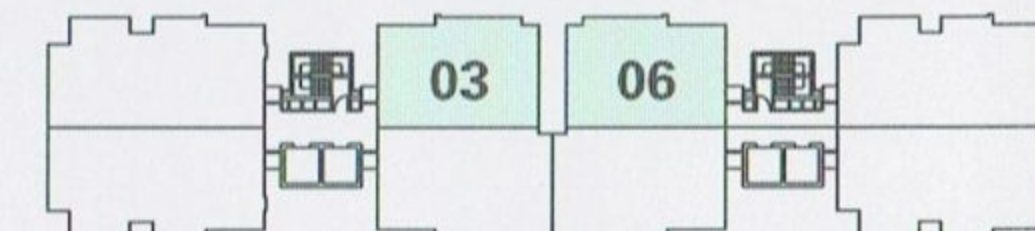
type C

1-bedroom



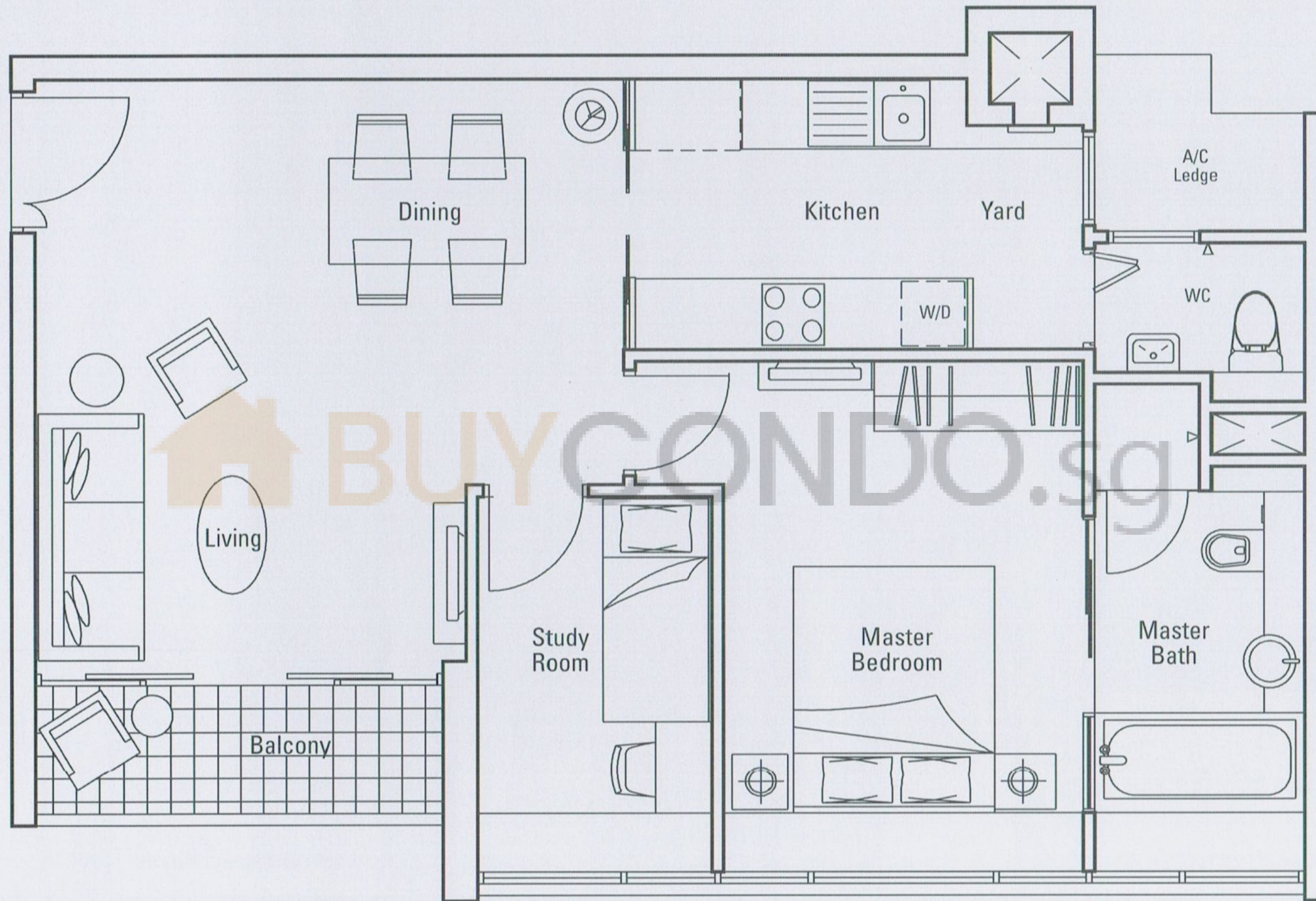
62 sq m / 667 sq ft

#03-03 to #15-03, #03-06 to #15-06



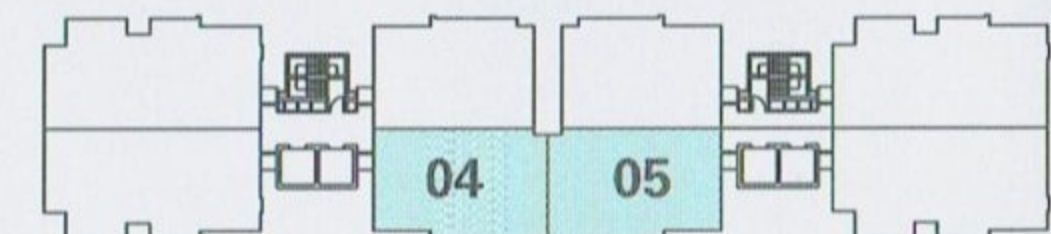
type A

1-bedroom + study



74 sq m / 796 sq ft

#04-04 to #15-04, #04-05 to #15-05



The above plan is subject to change as may be approved by the relevant authority. Areas are approximate measurements and subject to final survey.