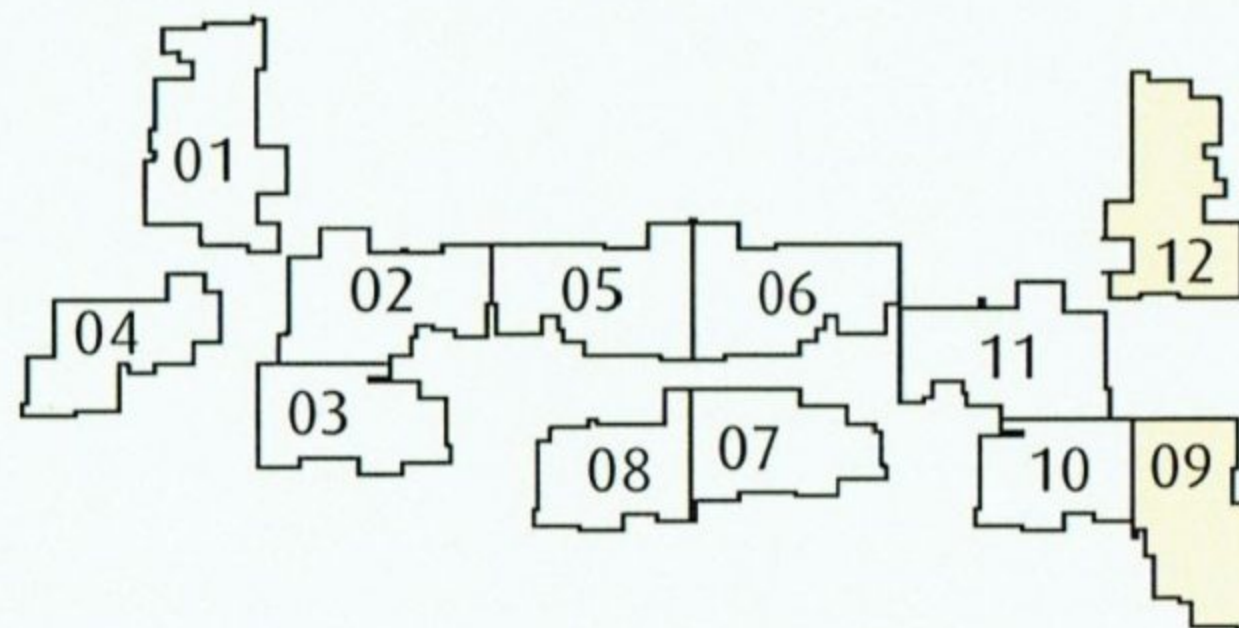


TYPE C5
#02-12 TO #18-12
112 Sq m/1206 Sq ft

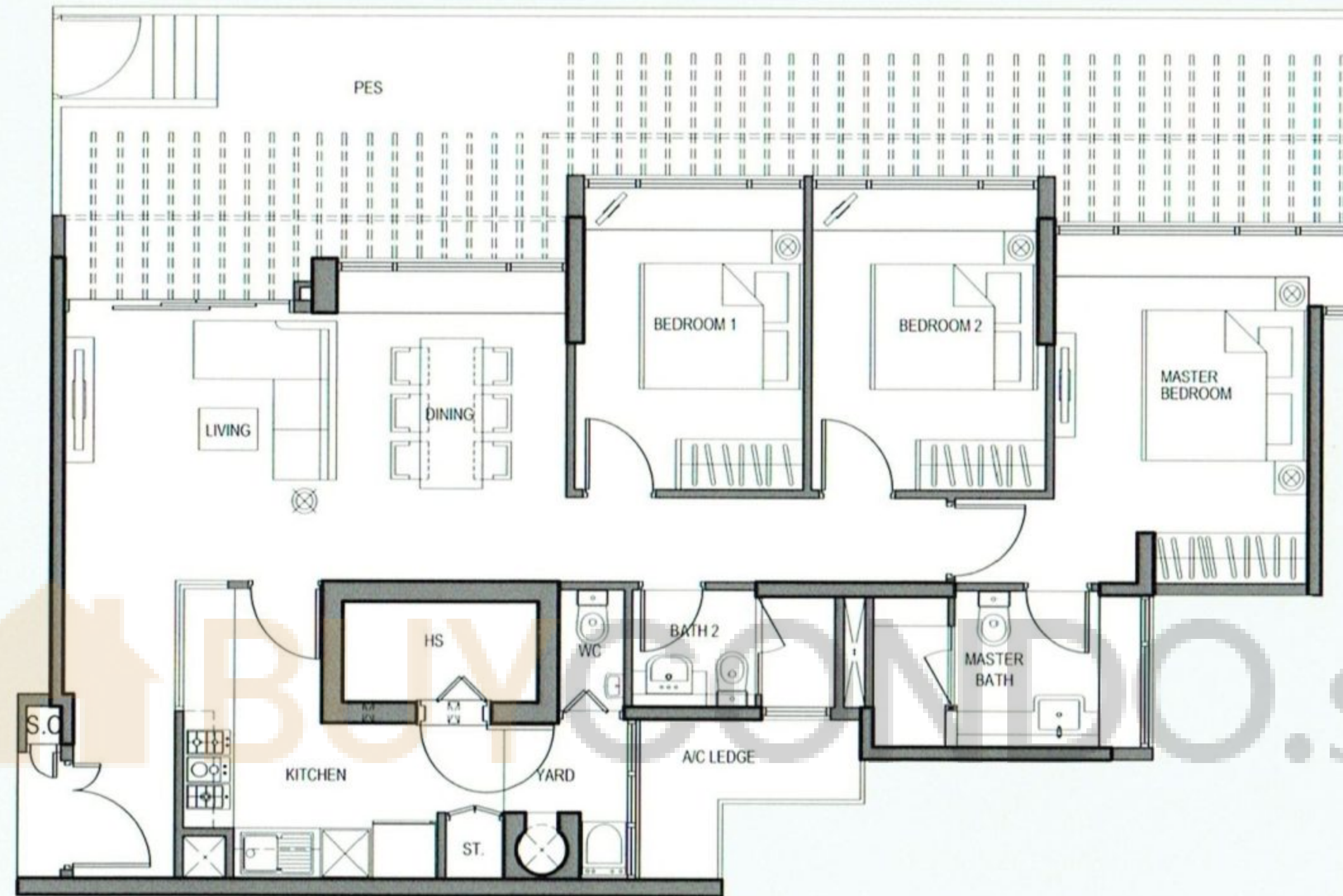
Living/Dining	= 32.6 Sq m
Master bedroom	= 15.8 Sq m
Bedroom 1	= 10.0 Sq m
Bedroom 2	= 9.9 Sq m

TYPE C6
#02-09 TO #18-09
107 Sq m/1152 Sq ft

Living/Dining	= 30.2 Sq m
Master bedroom	= 14.3 Sq m
Bedroom 1	= 9.9 Sq m
Bedroom 2	= 9.9 Sq m



Area includes PES, A/C ledge, bay windows, planter and balcony. Some units are mirror images of the apartment plans shown in the brochure. Please refer to the key plan for orientation. All plans are not to scale and are subject to change as may be approved by the relevant authorities. All floor areas are approximate only and are subject to government resurvey.

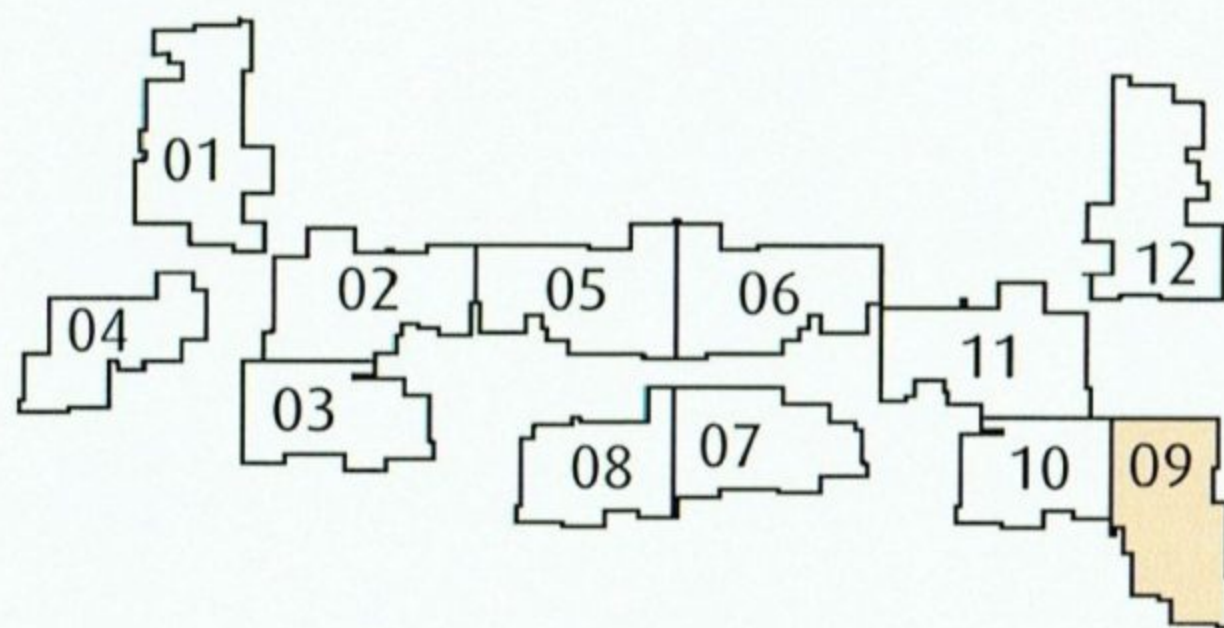


TYPE C6-P

#01-09

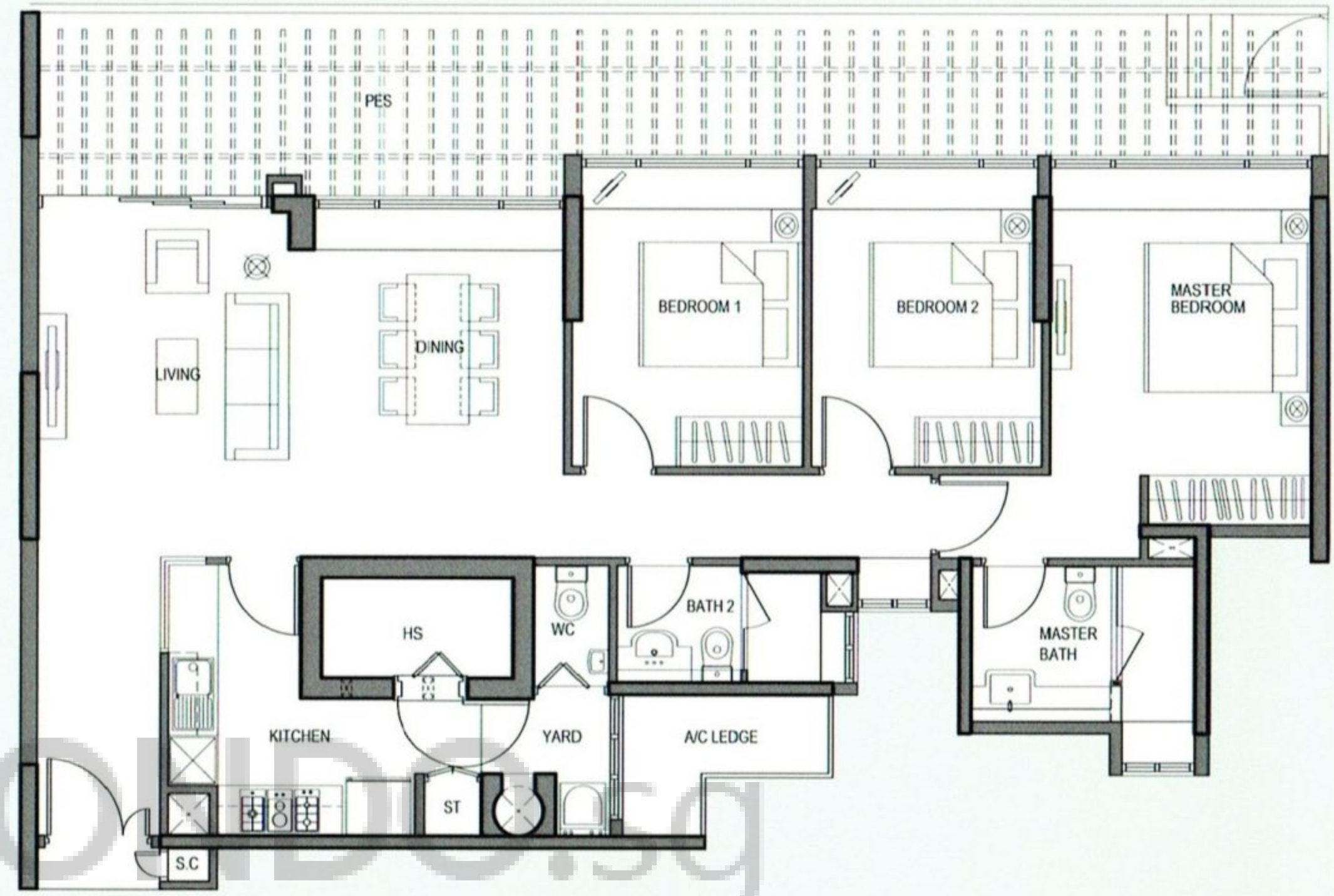
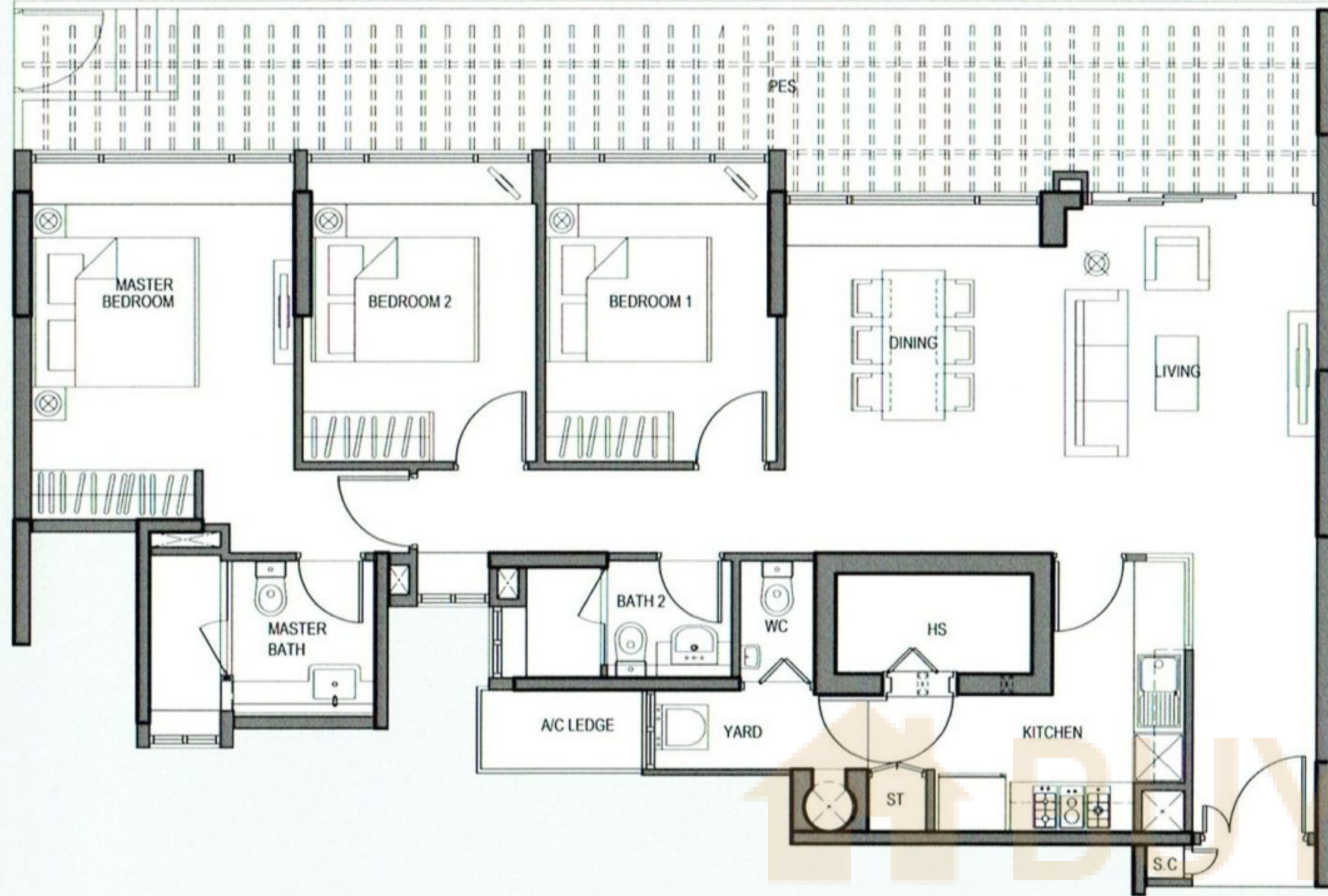
145 Sq m/1561 Sq ft

Living/Dining	= 30.2 Sq m
Master bedroom	= 14.3 Sq m
Bedroom 1	= 9.9 Sq m
Bedroom 2	= 9.9 Sq m
PES	= 40.9 Sq m



Area includes PES, A/C ledge, bay windows, planter and balcony. Some units are mirror images of the apartment plans shown in the brochure. Please refer to the key plan for orientation. All plans are not to scale and are subject to change as may be approved by the relevant authorities. All floor areas are approximate only and are subject to government resurvey.

3 Bedroom + PES



TYPE C2-P

#01-05

141 Sq m/1518 Sq ft

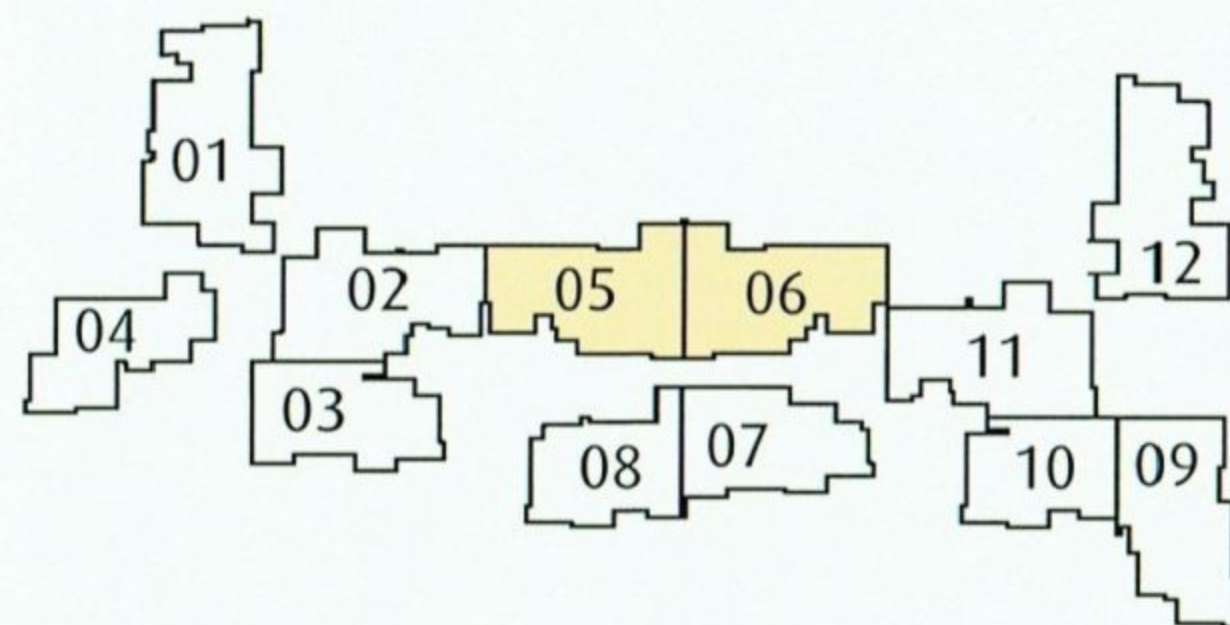
Living/Dining	= 37.2 Sq m
Master bedroom	= 15.3 Sq m
Bedroom 1	= 9.9 Sq m
Bedroom 2	= 9.9 Sq m
PES	= 31.2 Sq m

TYPE C3-P

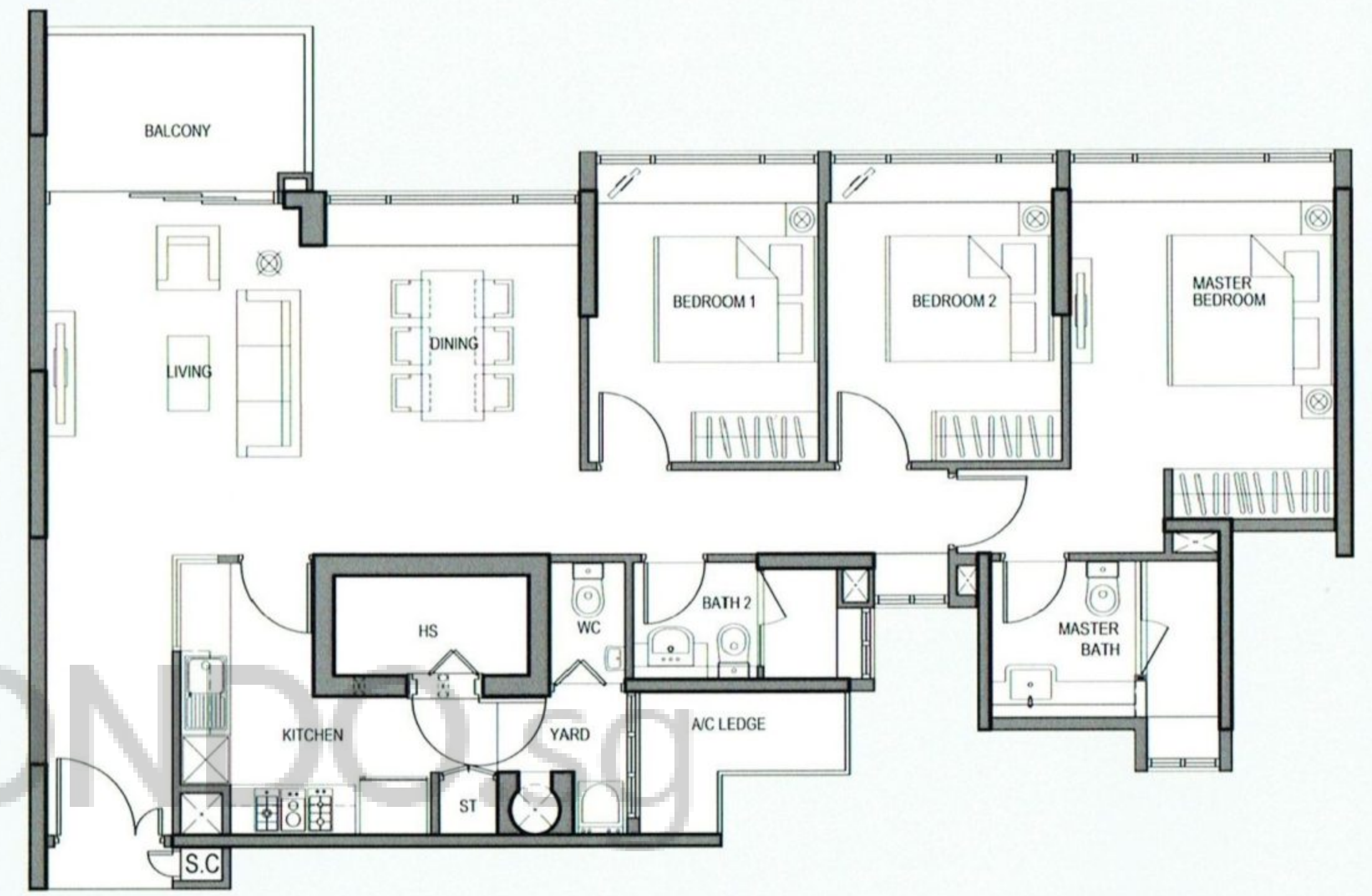
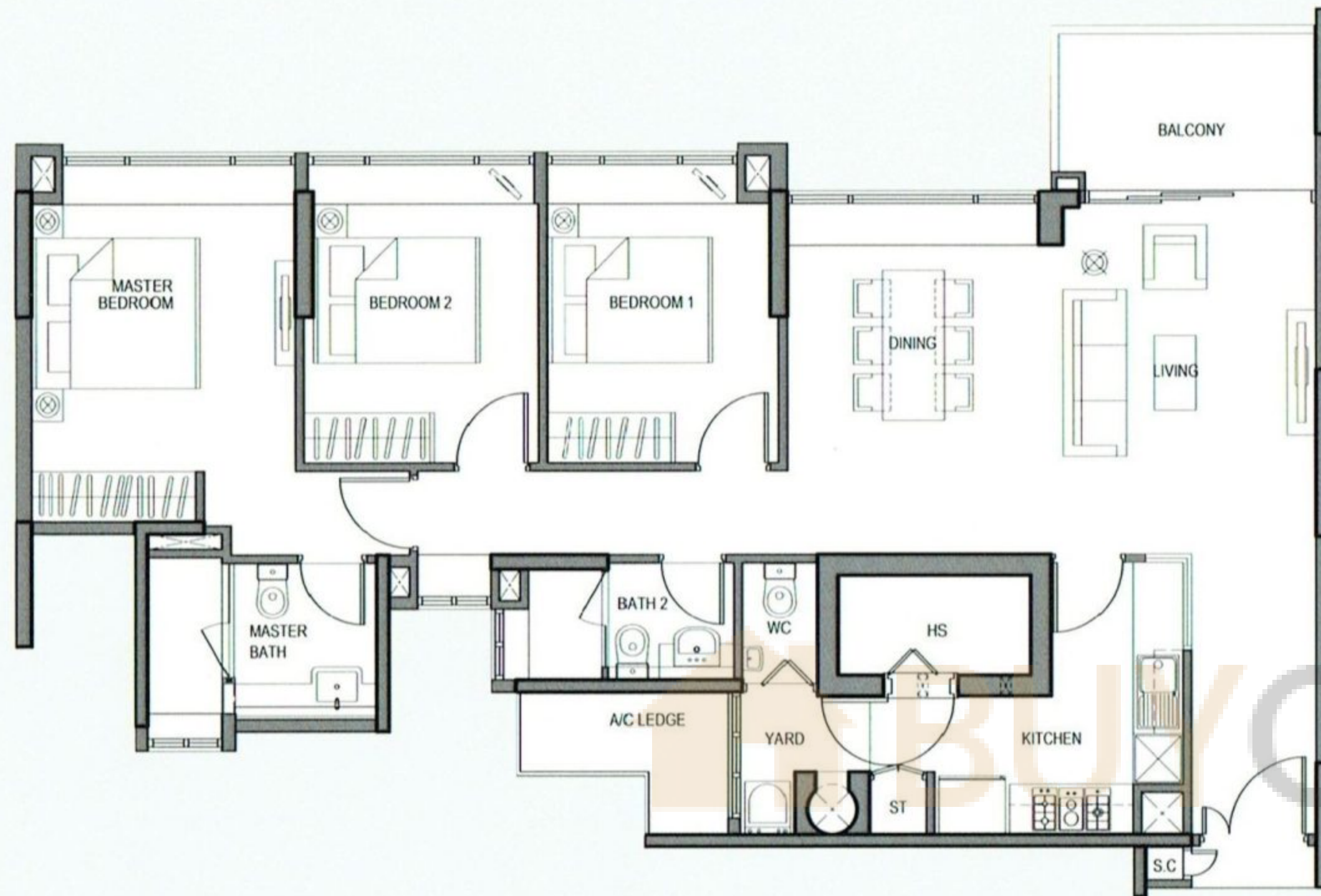
#01-06

142 Sq m/1528 Sq ft

Living/Dining	= 37.2 Sq m
Master bedroom	= 15.4 Sq m
Bedroom 1	= 9.9 Sq m
Bedroom 2	= 9.9 Sq m
PES	= 31.2 Sq m



Area includes PES, A/C ledge, bay windows, planter and balcony. Some units are mirror images of the apartment plans shown in the brochure. Please refer to the key plan for orientation. All plans are not to scale and are subject to change as may be approved by the relevant authorities. All floor areas are approximate only and are subject to government resurvey.

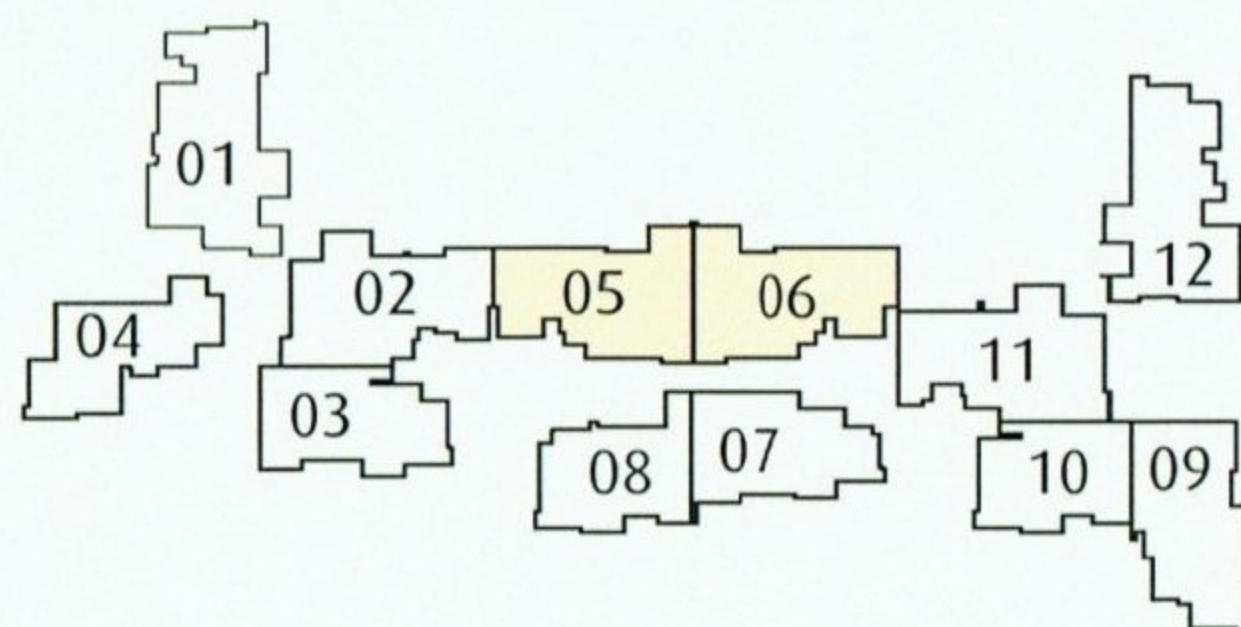


TYPE C2a
#04-05 TO #15-05
116 Sq m/1249 Sq ft

- Living/Dining = 37.2 Sq m
- Master bedroom = 15.1 Sq m
- Bedroom 1 = 9.7 Sq m
- Bedroom 2 = 9.9 Sq m

TYPE C3
#02-06 TO #03-06
#16-06 TO #18-06
116 Sq m/1249 Sq ft

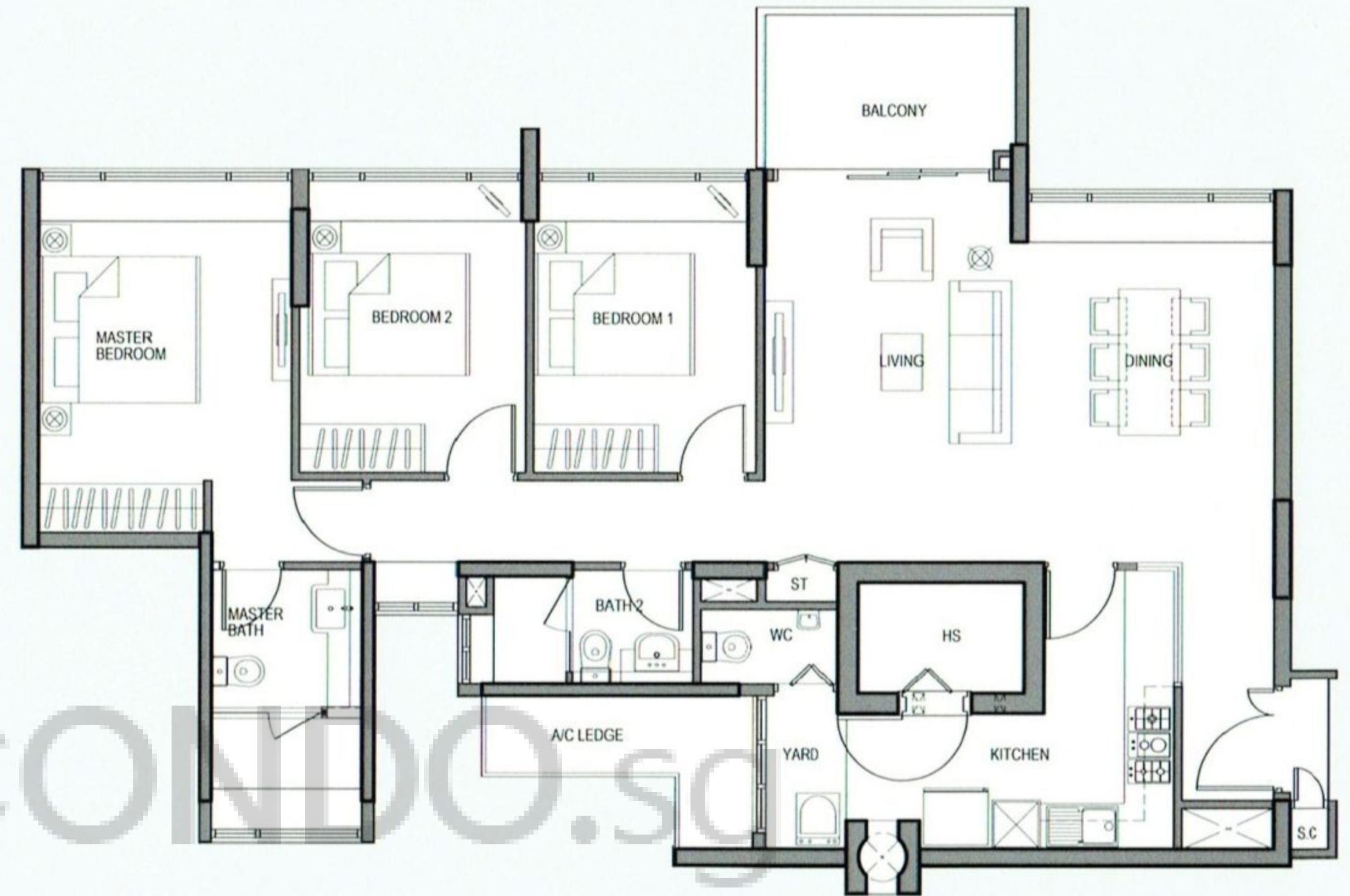
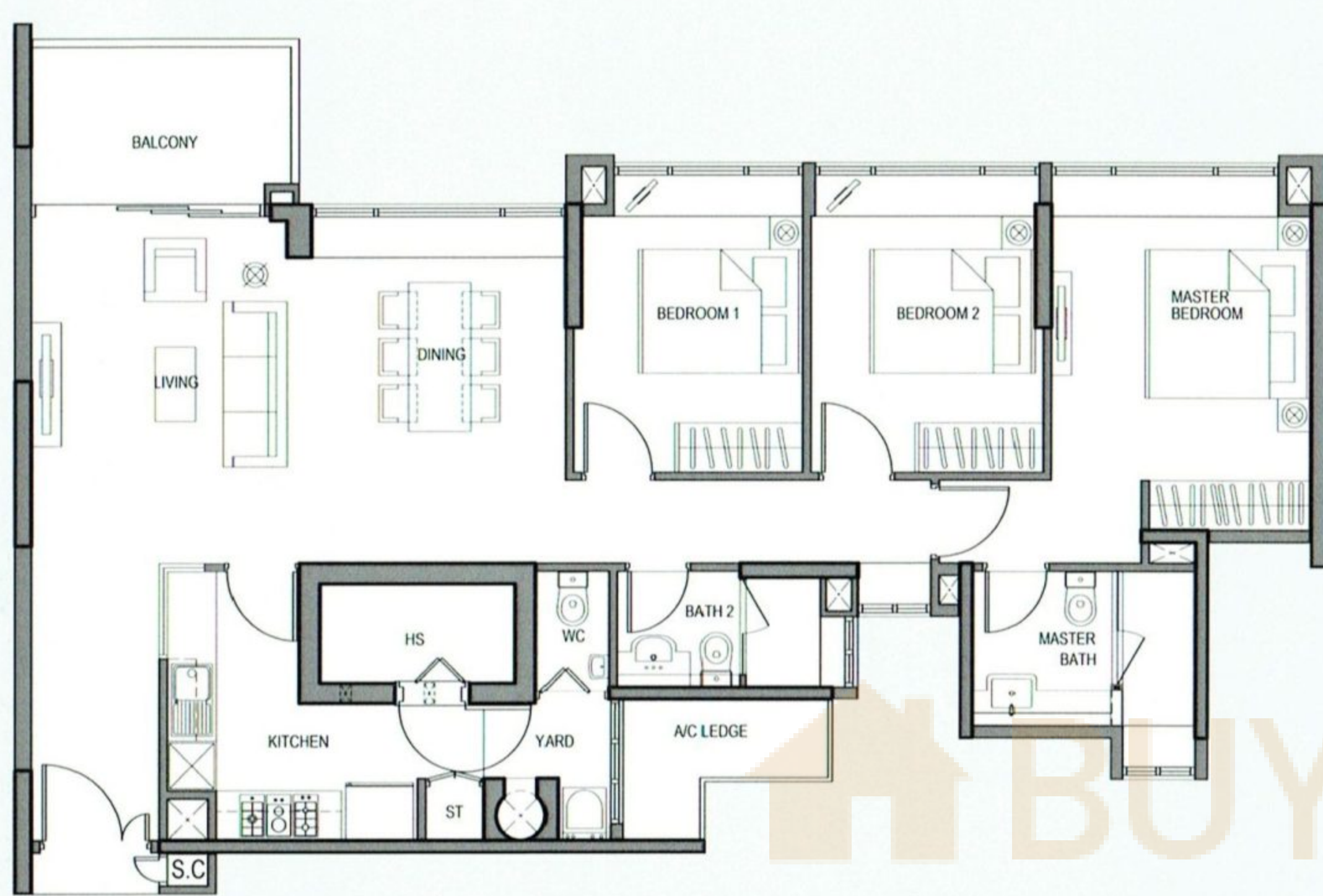
- Living/Dining = 37.2 Sq m
- Master bedroom = 15.4 Sq m
- Bedroom 1 = 9.9 Sq m
- Bedroom 2 = 9.9 Sq m



Area includes PES, A/C ledge, bay windows, planter and balcony. Some units are mirror images of the apartment plans shown in the brochure. Please refer to the key plan for orientation. All plans are not to scale and are subject to change as may be approved by the relevant authorities. All floor areas are approximate only and are subject to government resurvey.



3 Bedroom

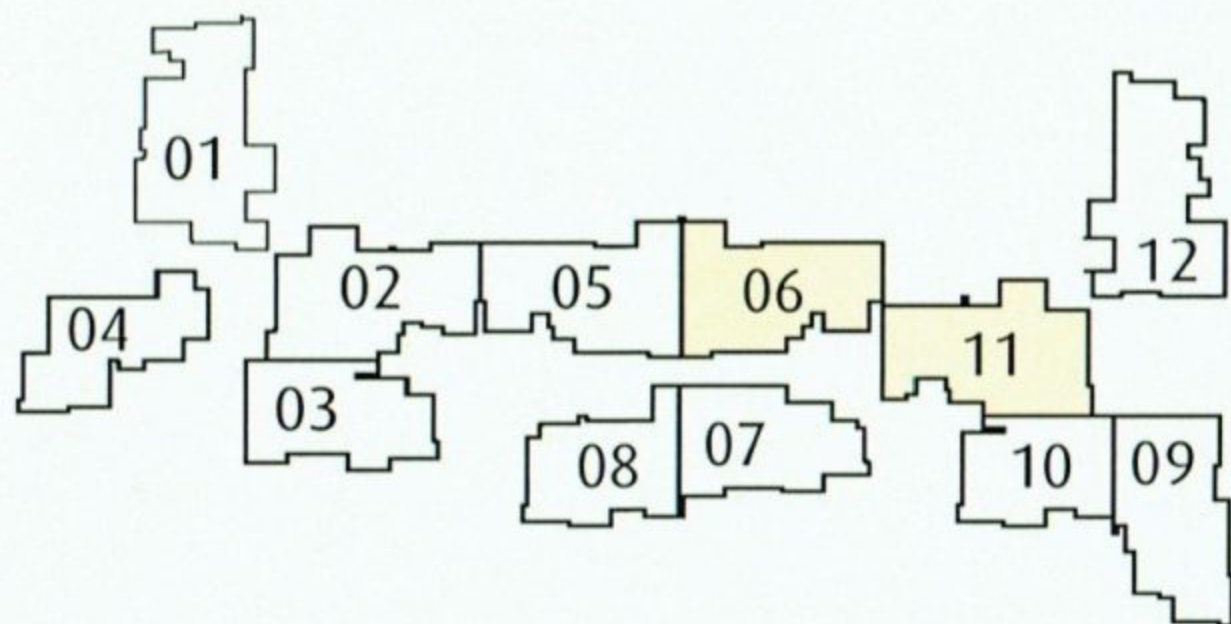


TYPE C3a
#04-06 TO 15-06
116 Sq m/1249 Sq ft

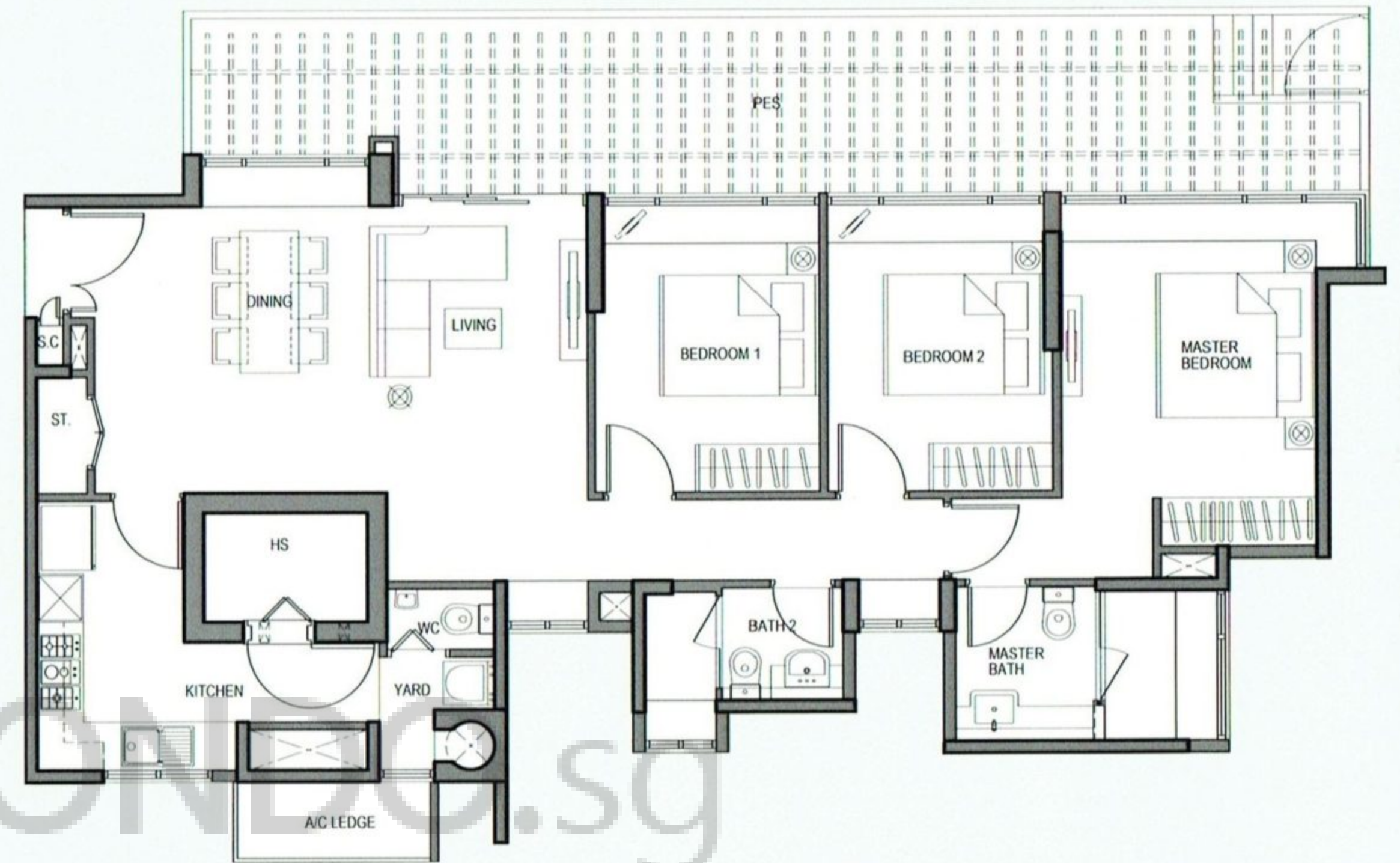
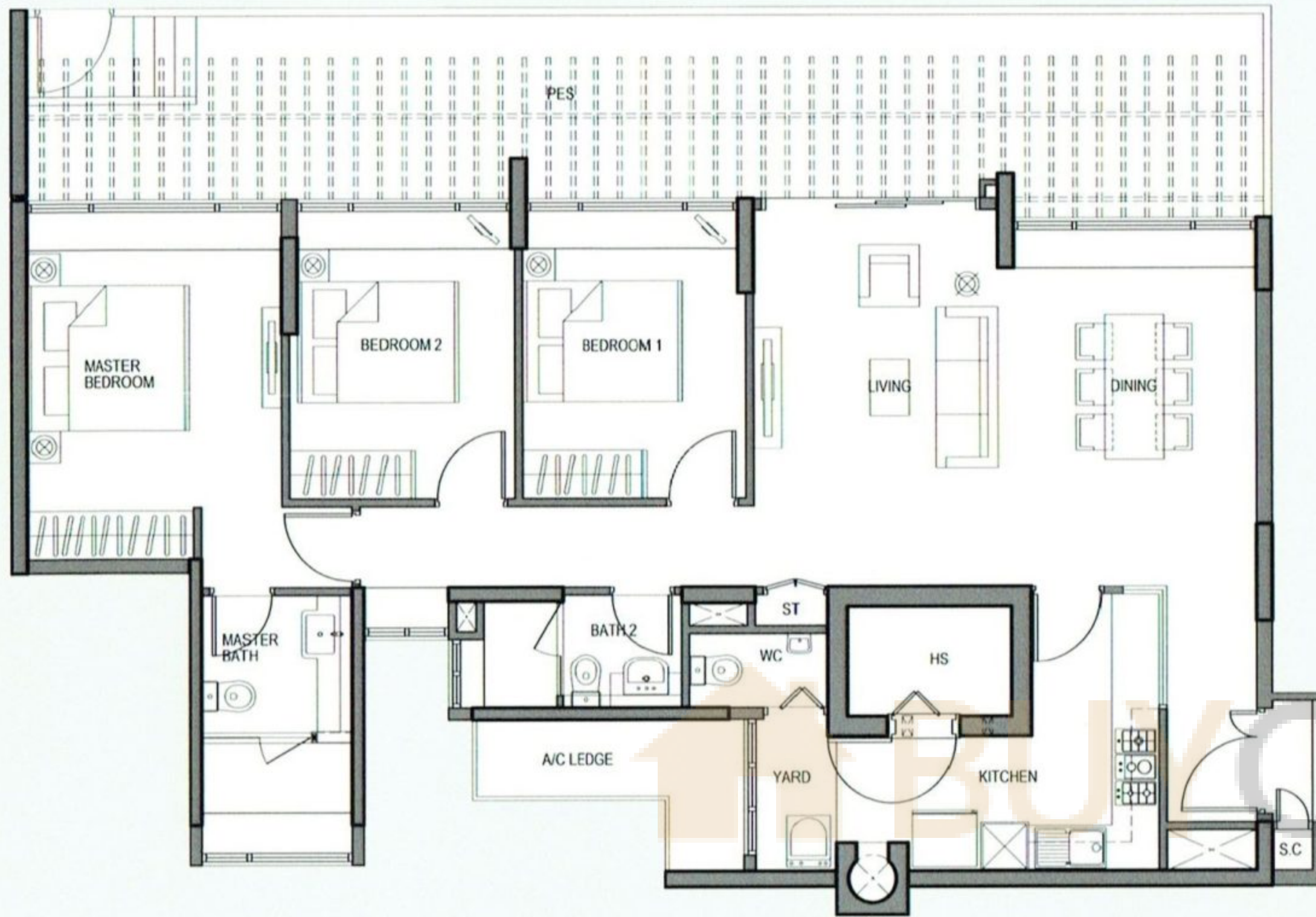
Living/Dining	= 37.2 Sq m
Master bedroom	= 15.2 Sq m
Bedroom 1	= 9.7 Sq m
Bedroom 2	= 9.9 Sq m

TYPE C4
#02-11 TO #18-11
120 Sq m/1292 Sq ft

Living/Dining	= 37.8 Sq m
Master bedroom	= 15.0 Sq m
Bedroom 1	= 10.0 Sq m
Bedroom 2	= 9.9 Sq m



Area includes PES, A/C ledge, bay windows, planter and balcony. Some units are mirror images of the apartment plans shown in the brochure. Please refer to the key plan for orientation. All plans are not to scale and are subject to change as may be approved by the relevant authorities. All floor areas are approximate only and are subject to government resurvey.



TYPE C4-P

#01-11

152 Sq m/1636 Sq ft

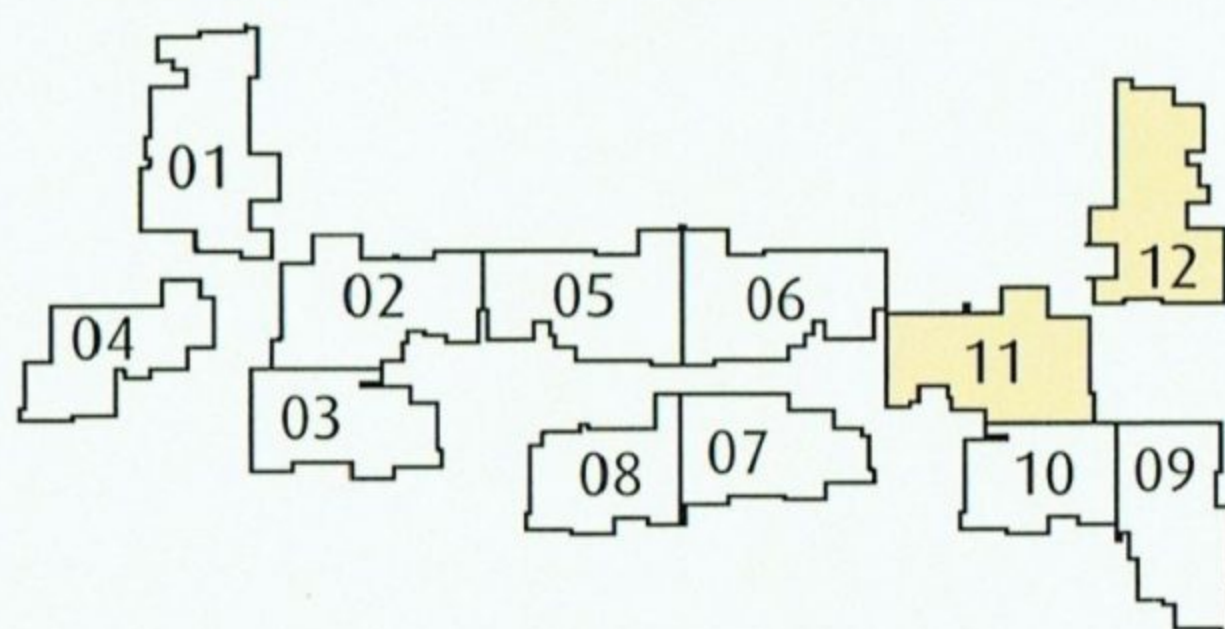
Living/Dining	= 37.8 Sq m
Master bedroom	= 15.0 Sq m
Bedroom 1	= 10.0 Sq m
Bedroom 2	= 9.9 Sq m
PES	= 37.4 Sq m

TYPE C5-P

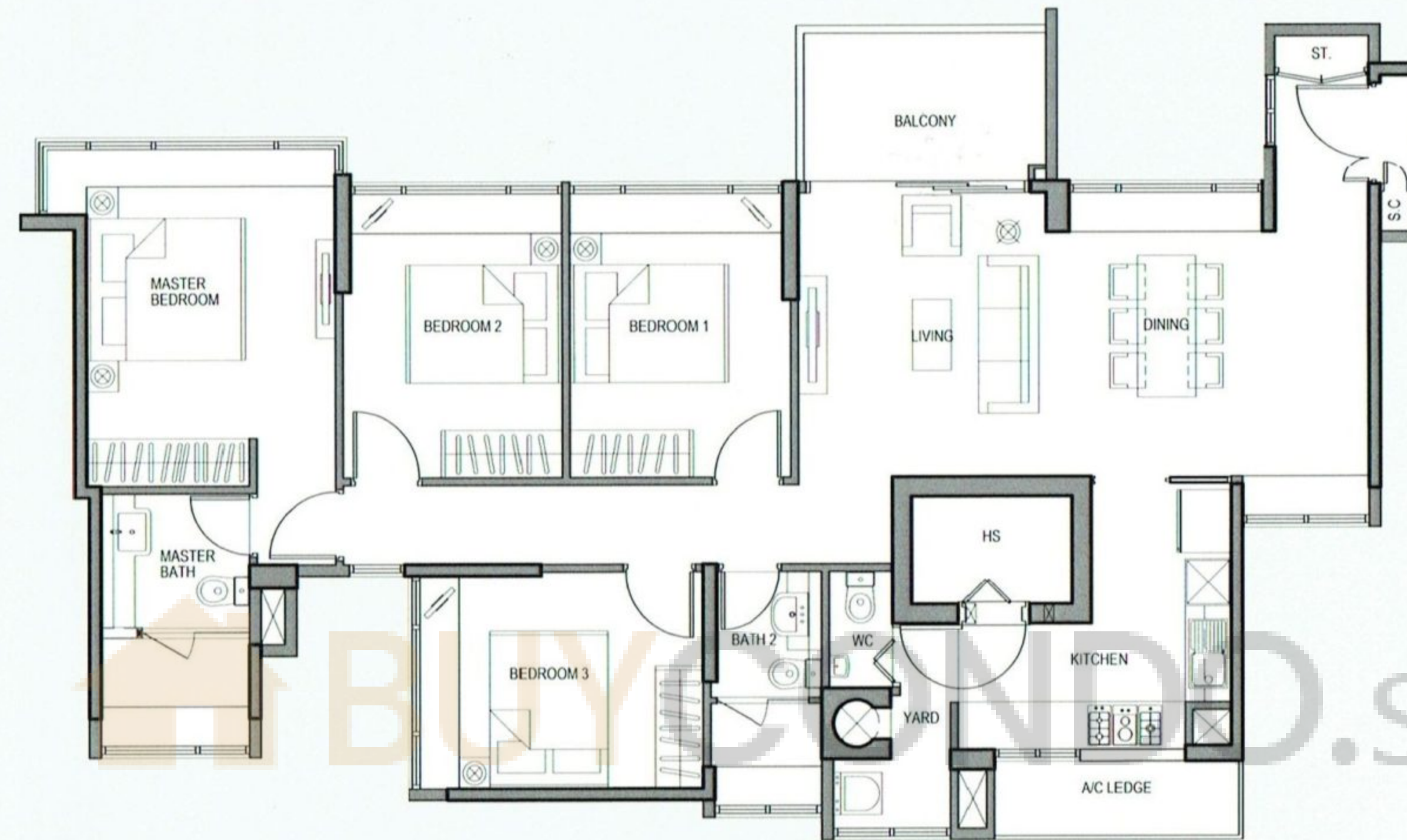
#01-12

140 Sq m/1507 Sq ft

Living/Dining	= 32.6 Sq m
Master bedroom	= 15.8 Sq m
Bedroom 1	= 10.0 Sq m
Bedroom 2	= 9.9 Sq m
PES	= 32.5 Sq m



Area includes PES, A/C ledge, bay windows, planter and balcony. Some units are mirror images of the apartment plans shown in the brochure. Please refer to the key plan for orientation. All plans are not to scale and are subject to change as may be approved by the relevant authorities. All floor areas are approximate only and are subject to government resurvey.

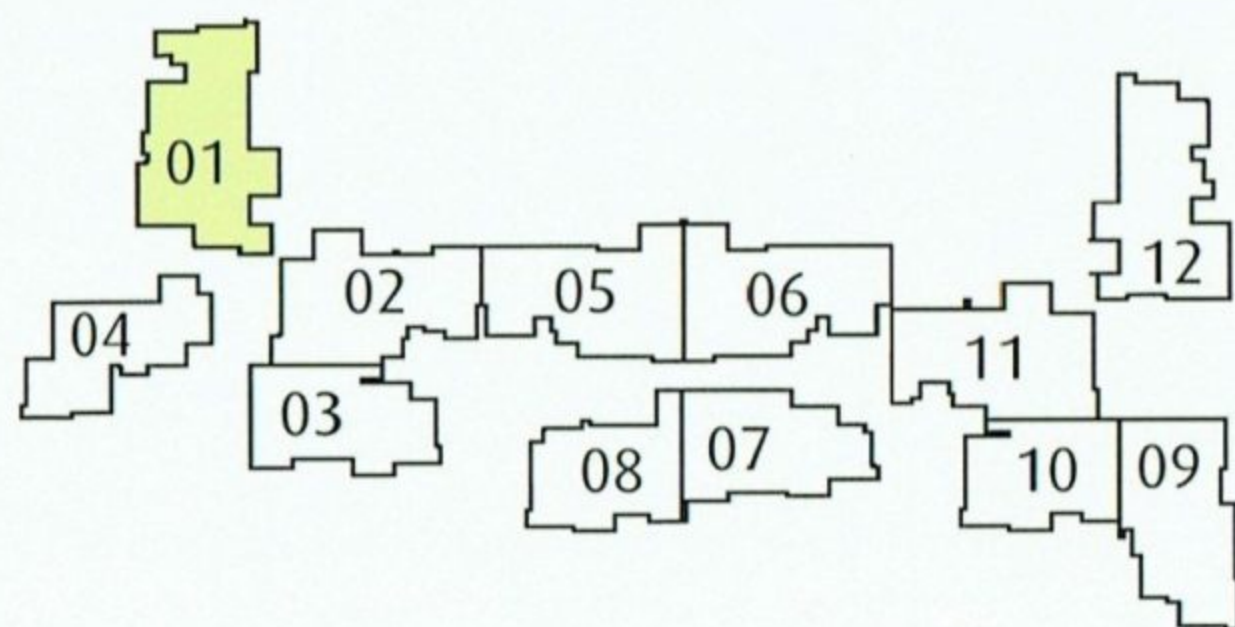


TYPE D1

#02-01 TO 18-01

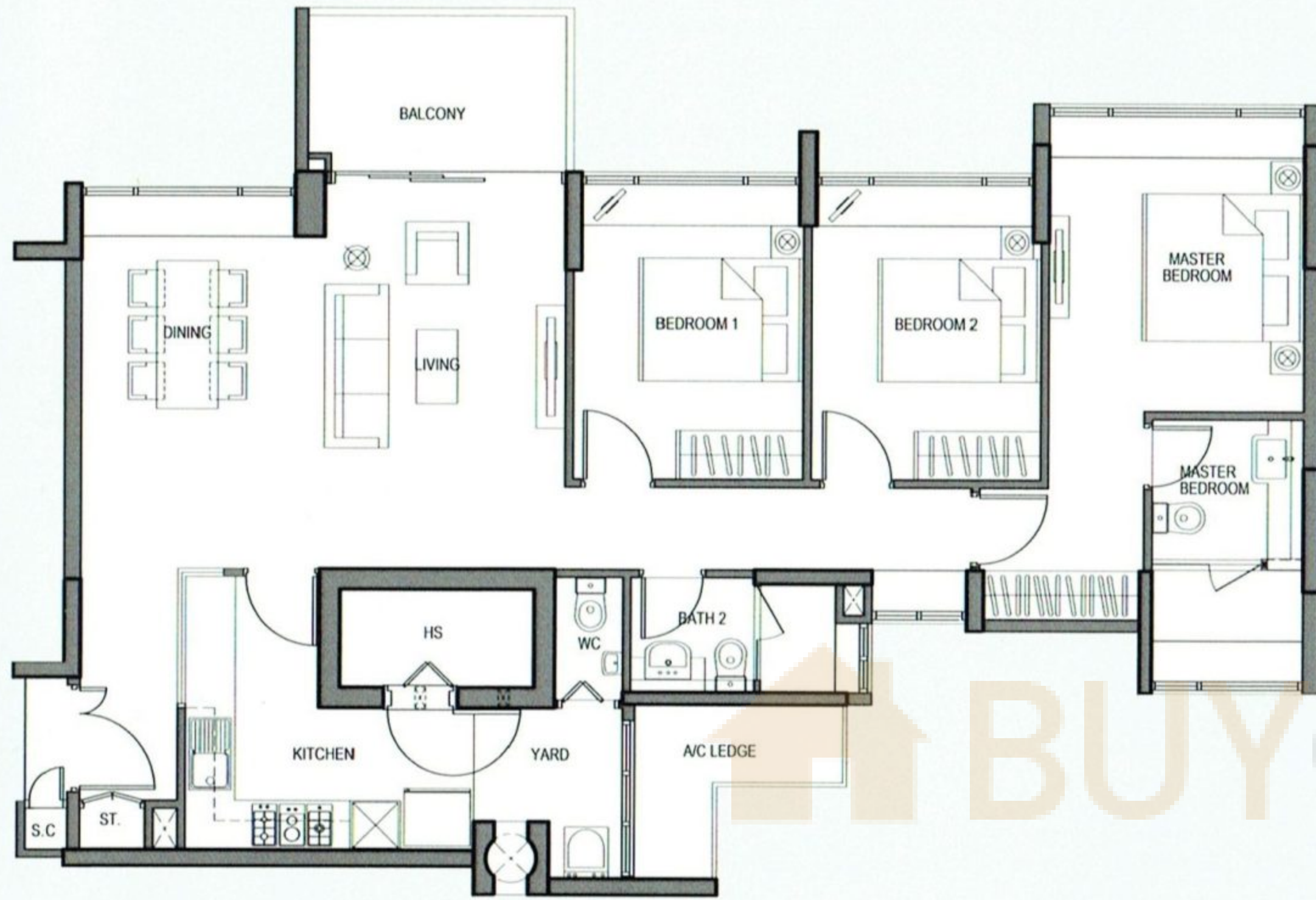
128 Sq m/1378 Sq ft

Living/Dining	= 36.4 Sq m
Master bedroom	= 15.0 Sq m
Bedroom 1	= 10.0 Sq m
Bedroom 2	= 10.0 Sq m
Bedroom 3	= 9.9 Sq m



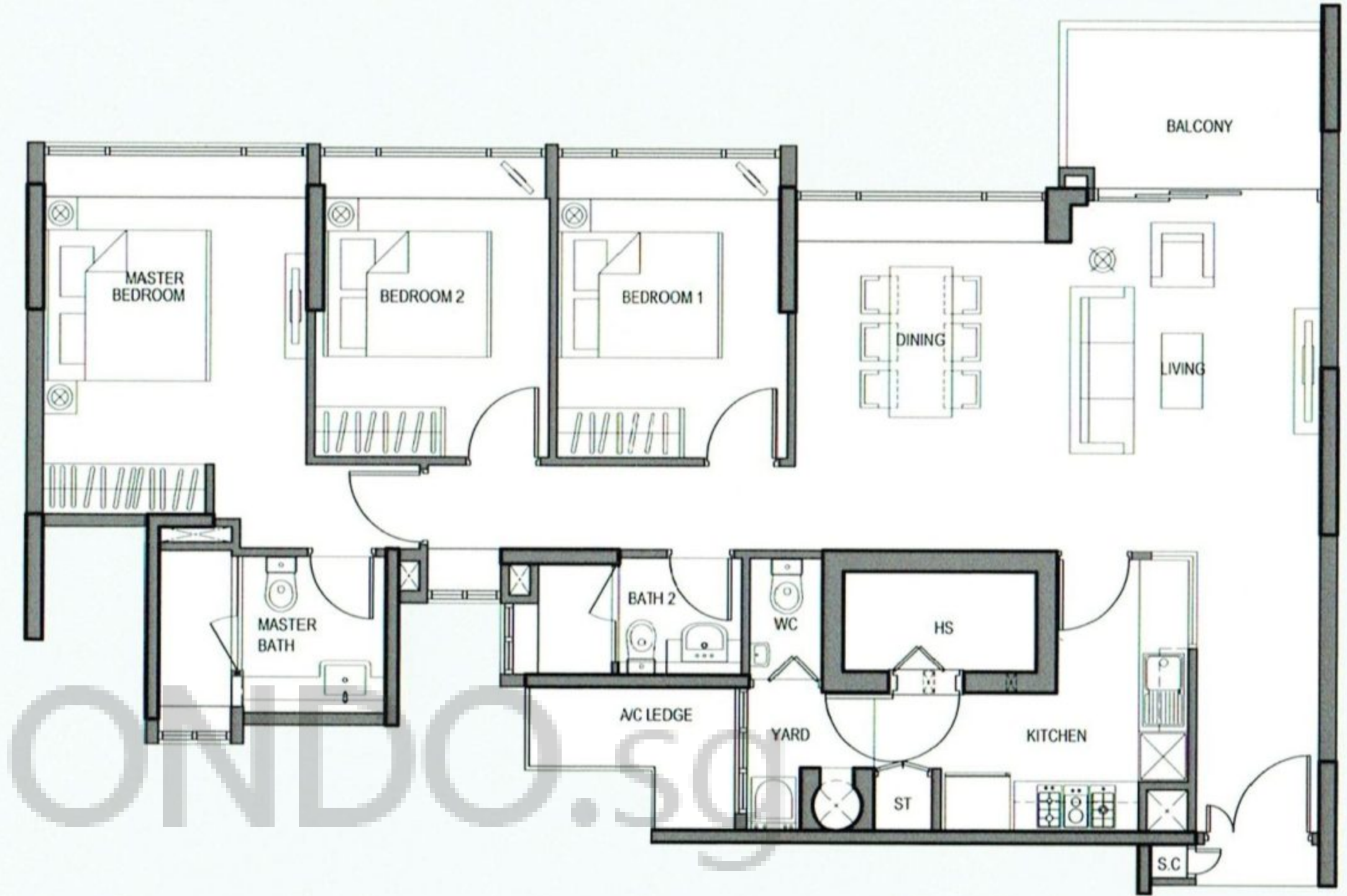
Area includes PES, A/C ledge, bay windows, planter and balcony. Some units are mirror images of the apartment plans shown in the brochure. Please refer to the key plan for orientation. All plans are not to scale and are subject to change as may be approved by the relevant authorities. All floor areas are approximate only and are subject to government resurvey.

3 Bedroom



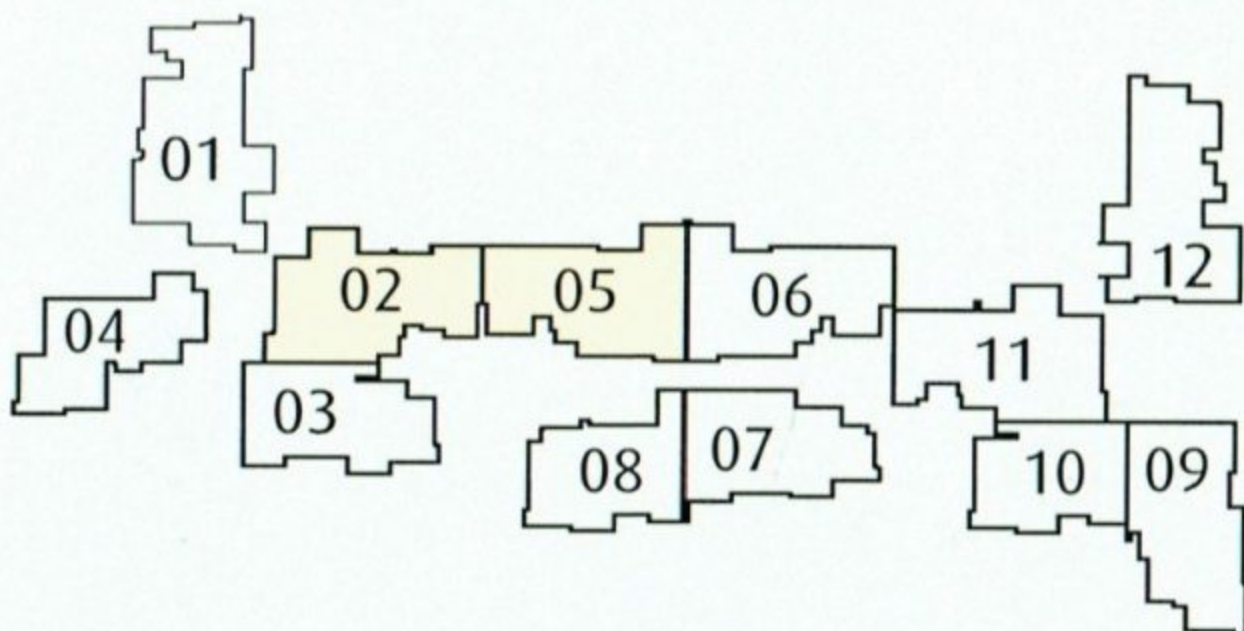
TYPE C1
#02-02 TO #18-02
119 Sq m/1281 Sq ft

Living/Dining	= 36.4 Sq m
Master bedroom	= 15.8 Sq m
Bedroom 1	= 10.0 Sq m
Bedroom 2	= 10.0 Sq m

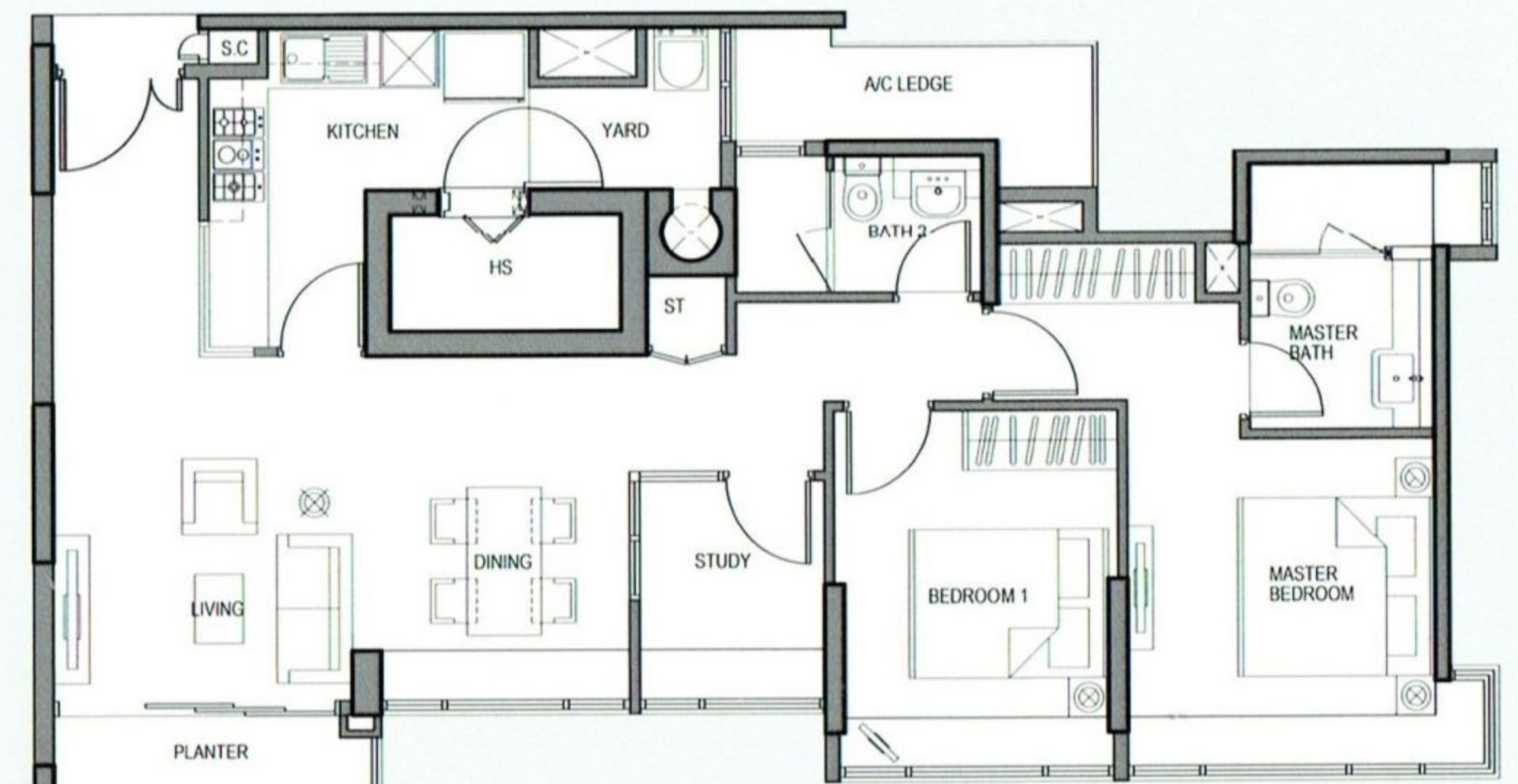
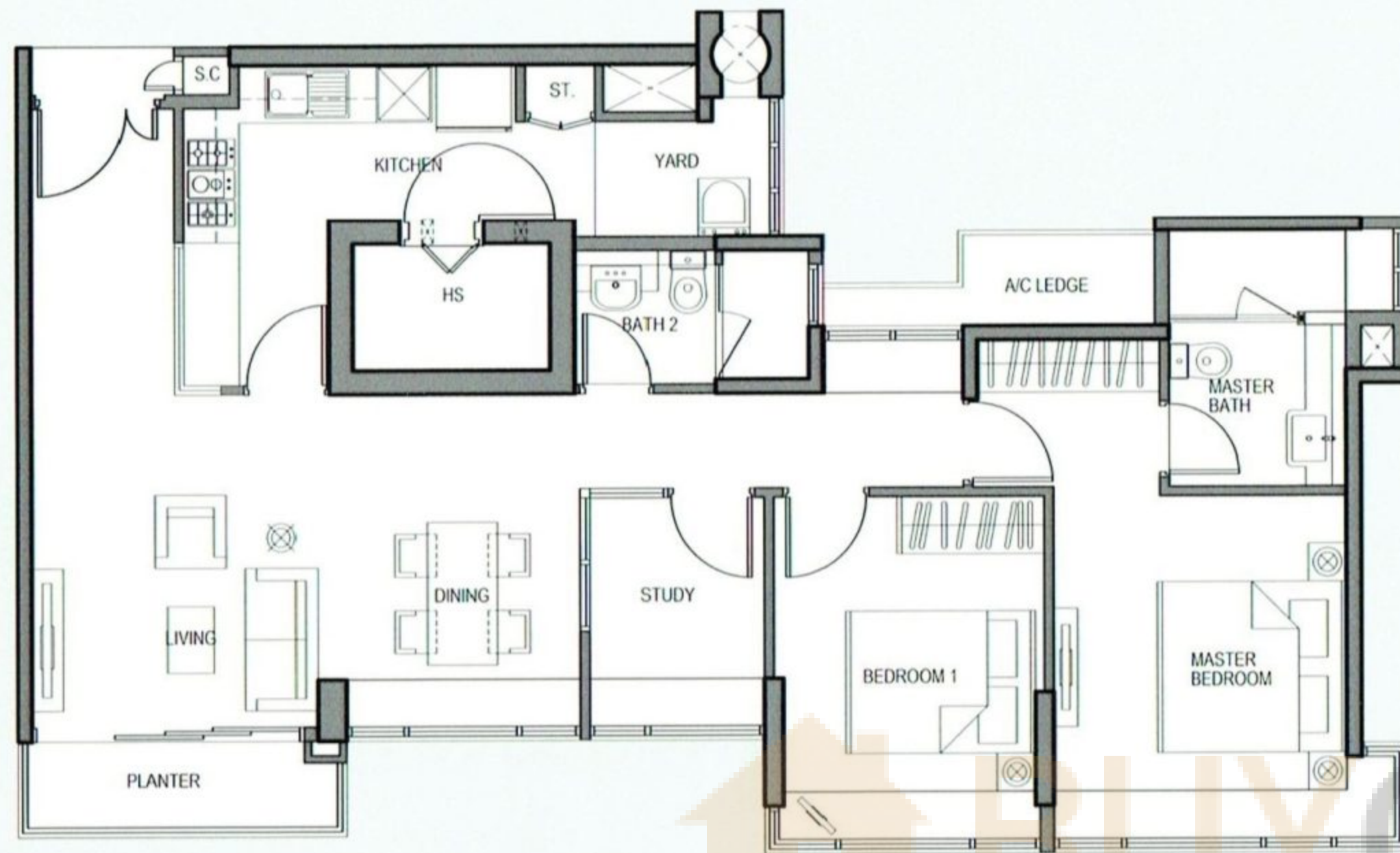


TYPE C2
#02-05 TO #03-05
#16-05 TO #18-05
116 Sq m/1249 Sq ft

Living/Dining	= 37.2 Sq m
Master bedroom	= 15.3 Sq m
Bedroom 1	= 9.9 Sq m
Bedroom 2	= 9.9 Sq m



Area includes PES, A/C ledge, bay windows, planter and balcony. Some units are mirror images of the apartment plans shown in the brochure. Please refer to the key plan for orientation. All plans are not to scale and are subject to change as may be approved by the relevant authorities. All floor areas are approximate only and are subject to government resurvey.



TYPE B1

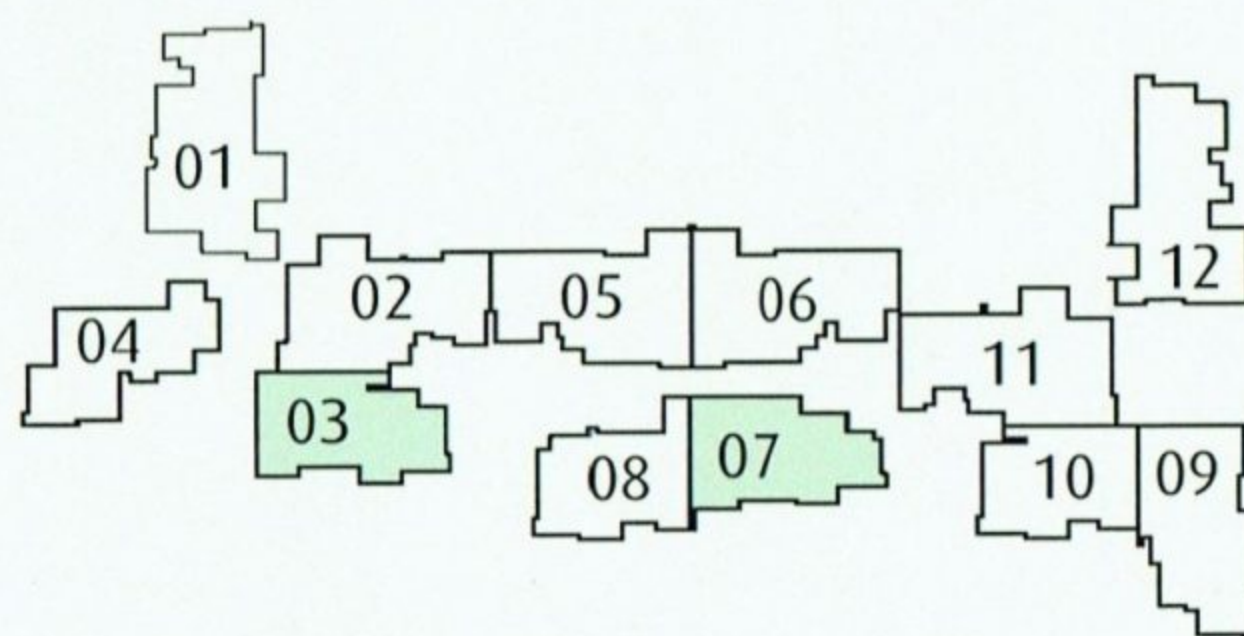
#05-03 TO #18-03
99 Sq m/1066 Sq ft

Living/Dining	= 30.2 Sq m
Master bedroom	= 14.9 Sq m
Bedroom 1	= 10.0 Sq m
Study	= 4.5 Sq m

TYPE B2

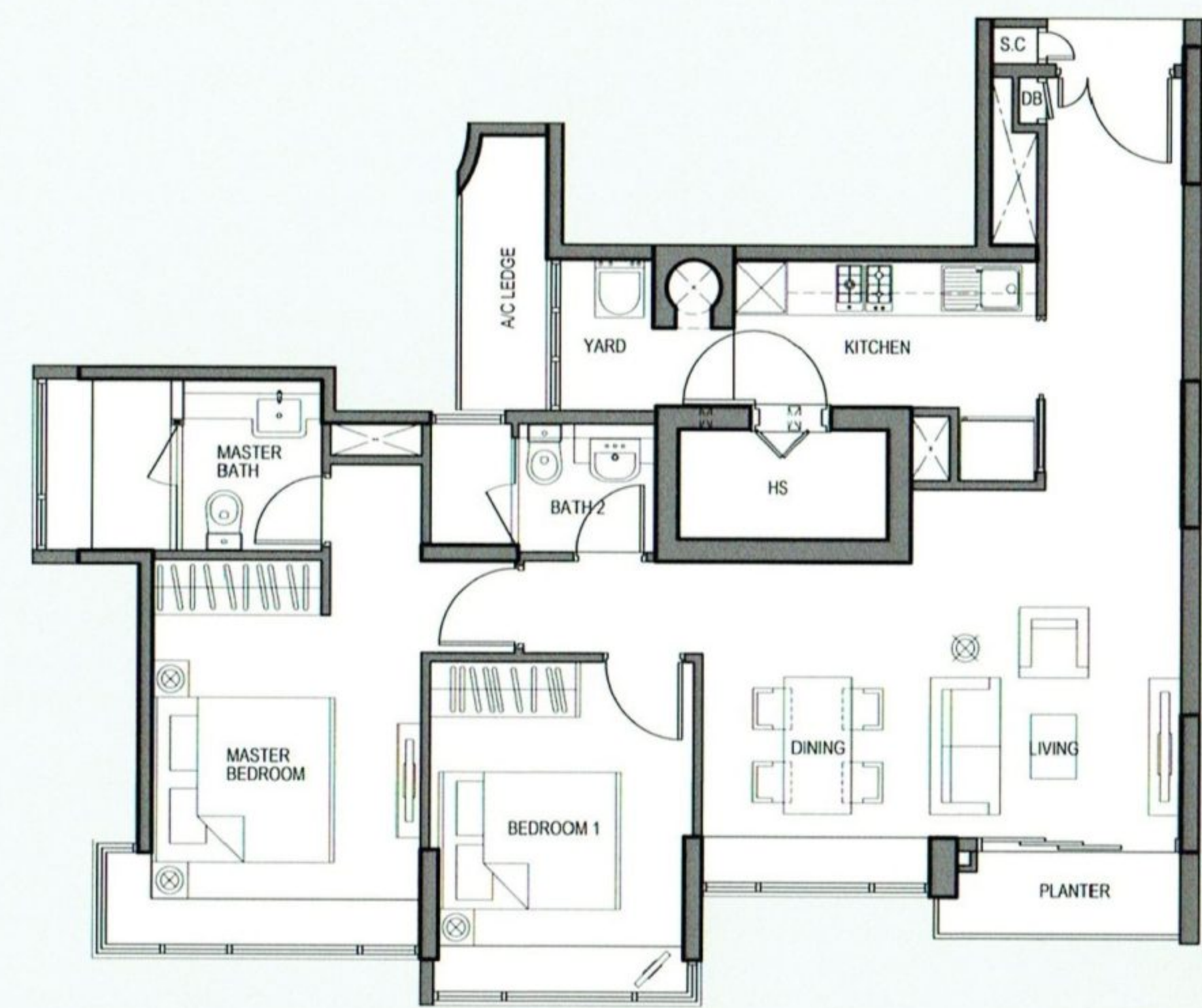
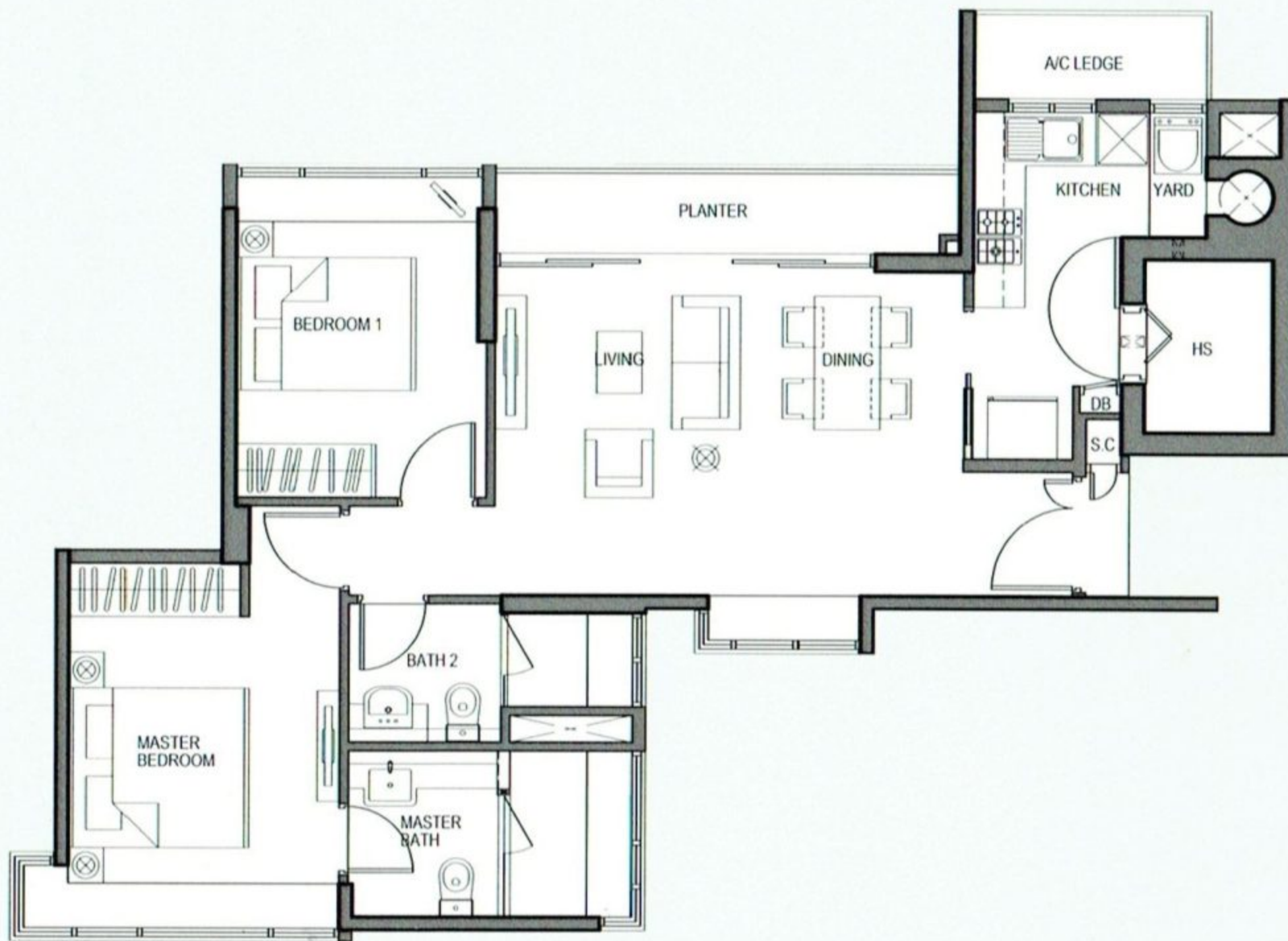
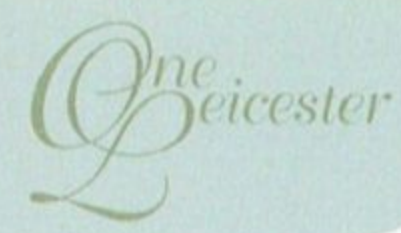
#05-07 TO #18-07
98 Sq m/1055 Sq ft

Living/Dining	= 29.4 Sq m
Master bedroom	= 14.8 Sq m
Bedroom 1	= 10.0 Sq m
Study	= 4.2 Sq m



Area includes PES, A/C ledge, bay windows, planter and balcony. Some units are mirror images of the apartment plans shown in the brochure. Please refer to the key plan for orientation. All plans are not to scale and are subject to change as may be approved by the relevant authorities. All floor areas are approximate only and are subject to government resurvey.

2 Bedroom



TYPE A1
#04-04 TO #18-04
84 Sq m/904 Sq ft

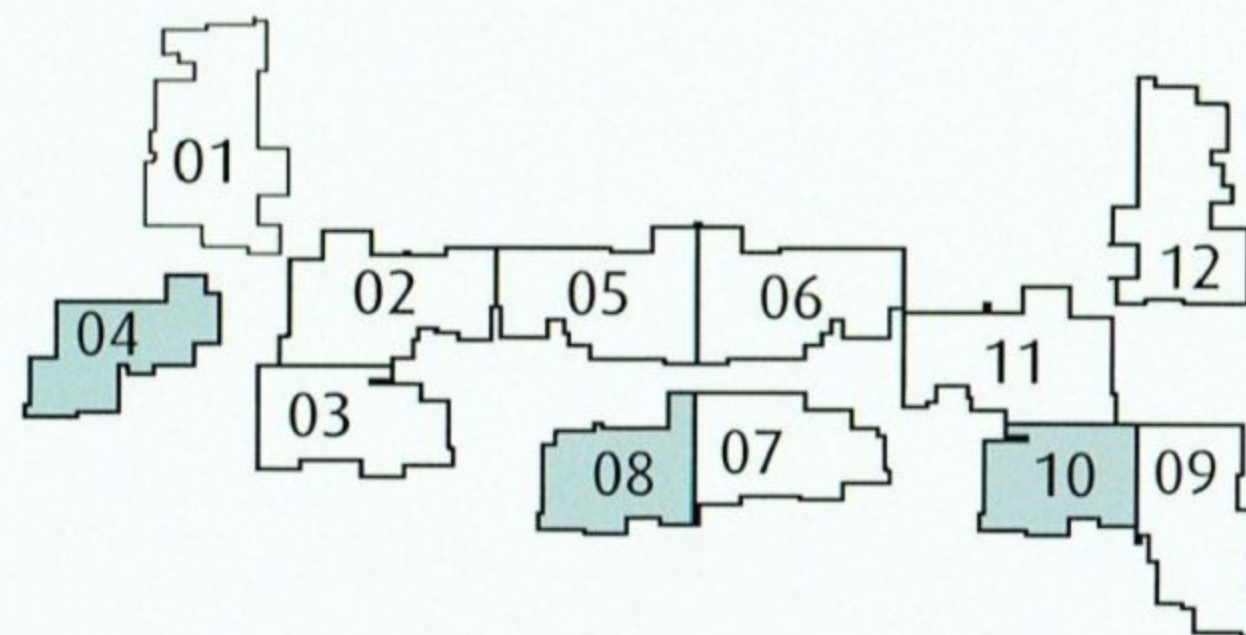
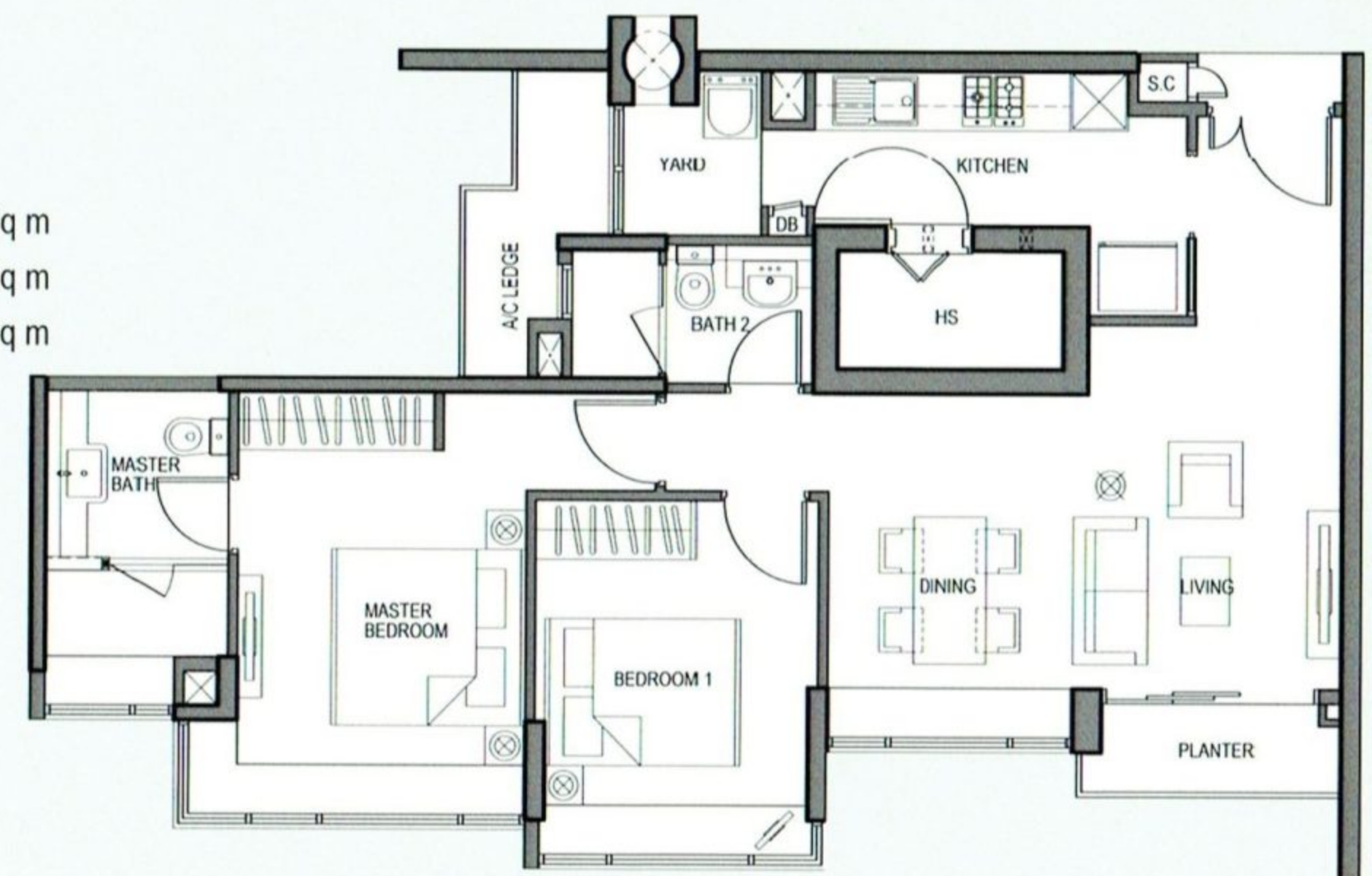
Living/Dining = 24.5 Sq m
Master bedroom = 13.4 Sq m
Bedroom 1 = 10.0 Sq m

TYPE A2
#06-08 TO #18-08
89 Sq m/958 Sq ft

Living/Dining = 28.7 Sq m
Master bedroom = 15.0 Sq m
Bedroom 1 = 10.2 Sq m

TYPE A3
#05-10 TO #18-10
85 Sq m/915 Sq ft

Living/Dining = 24.3 Sq m
Master bedroom = 14.6 Sq m
Bedroom 1 = 10.2 Sq m



Area includes PES, A/C ledge, bay windows, planter and balcony. Some units are mirror images of the apartment plans shown in the brochure. Please refer to the key plan for orientation. All plans are not to scale and are subject to change as may be approved by the relevant authorities. All floor areas are approximate only and are subject to government resurvey.