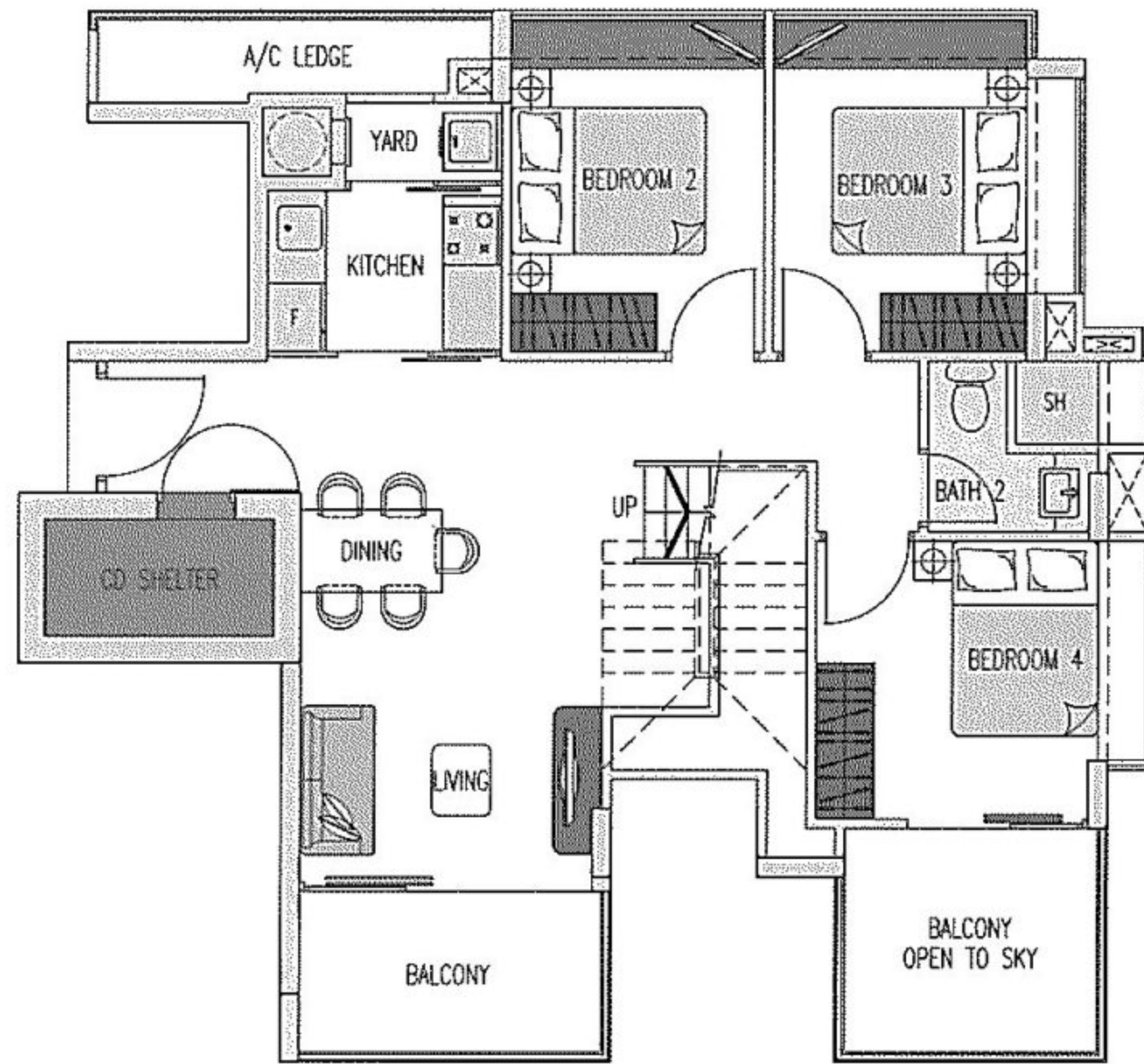
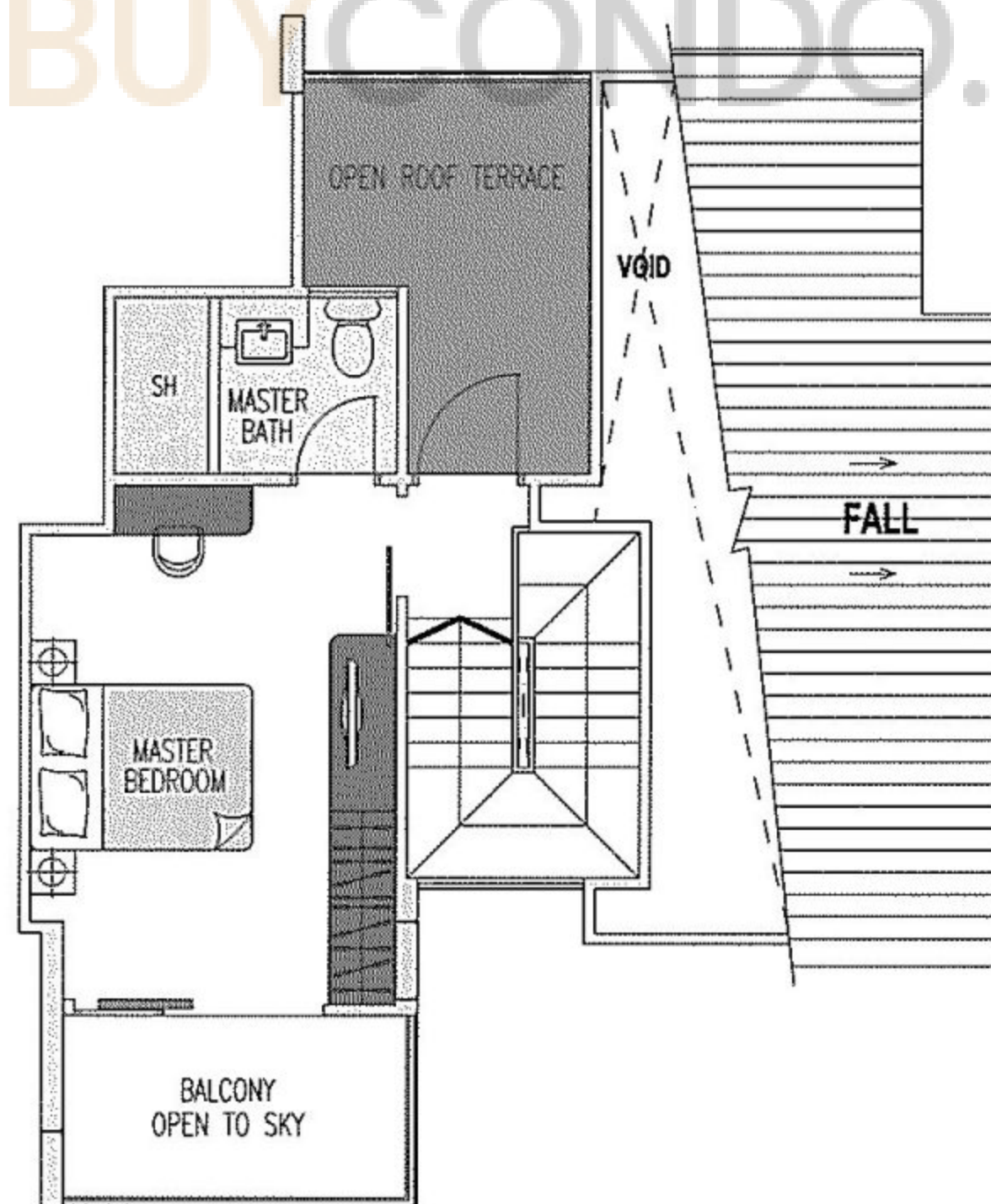


Type G1

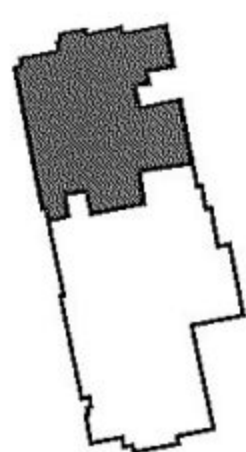
(131m² / 1410ft²)



Lower



Upper



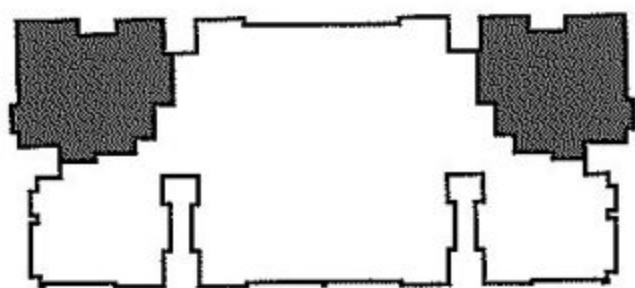
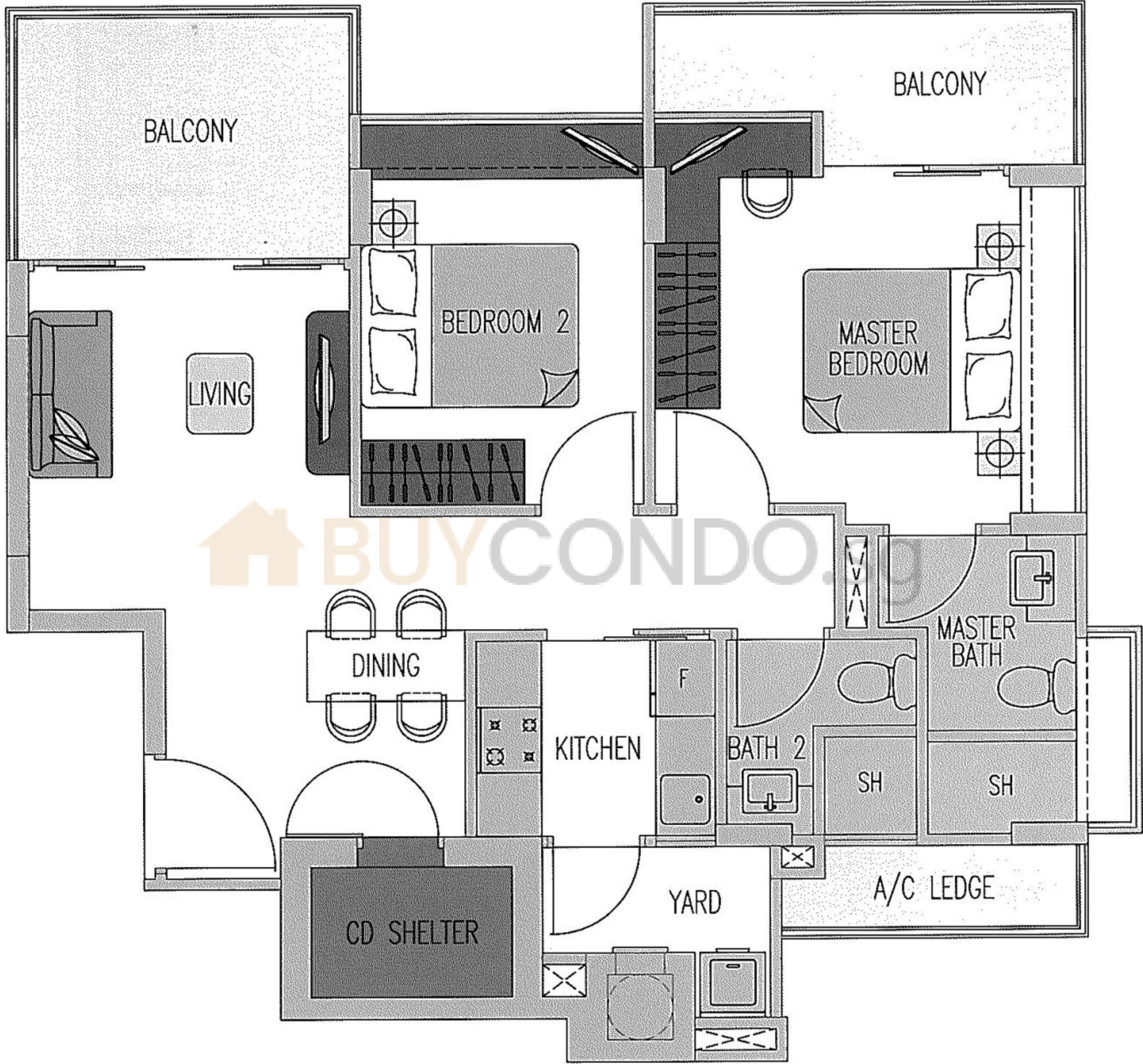
#05-01 & #05-12

The above floor plans are subject to changes as may be approved by relevant authorities.
Plans are not drawn to scale.



Type A

(80m² / 861ft²)



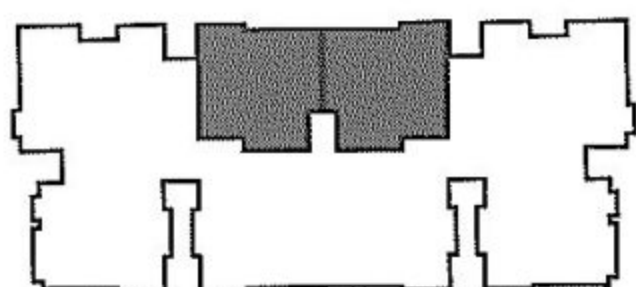
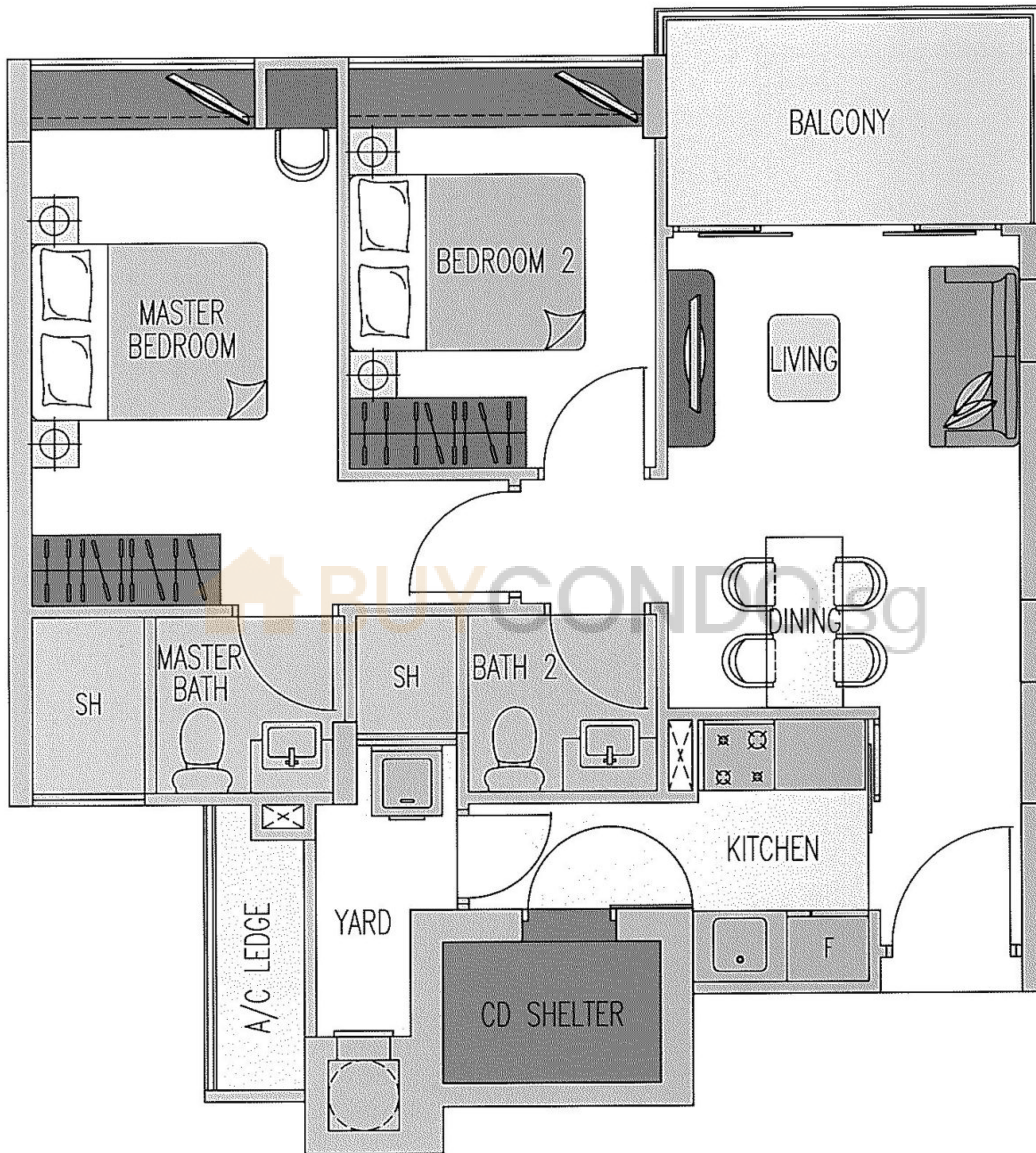
#02-07 & #02-08
#03-07 & #03-08
#04-07 & #04-08

The above floor plans are subject to changes as may be approved by relevant authorities.
Plans are not drawn to scale.



Type B

(70m² / 753ft²)

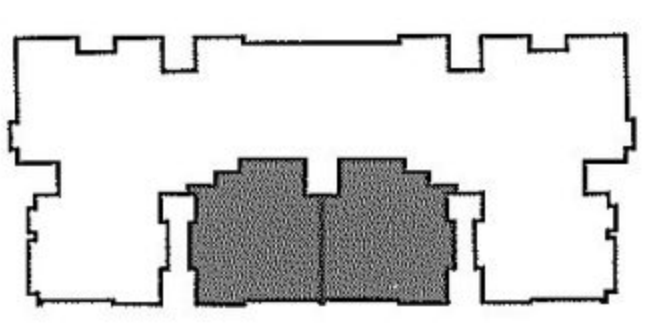
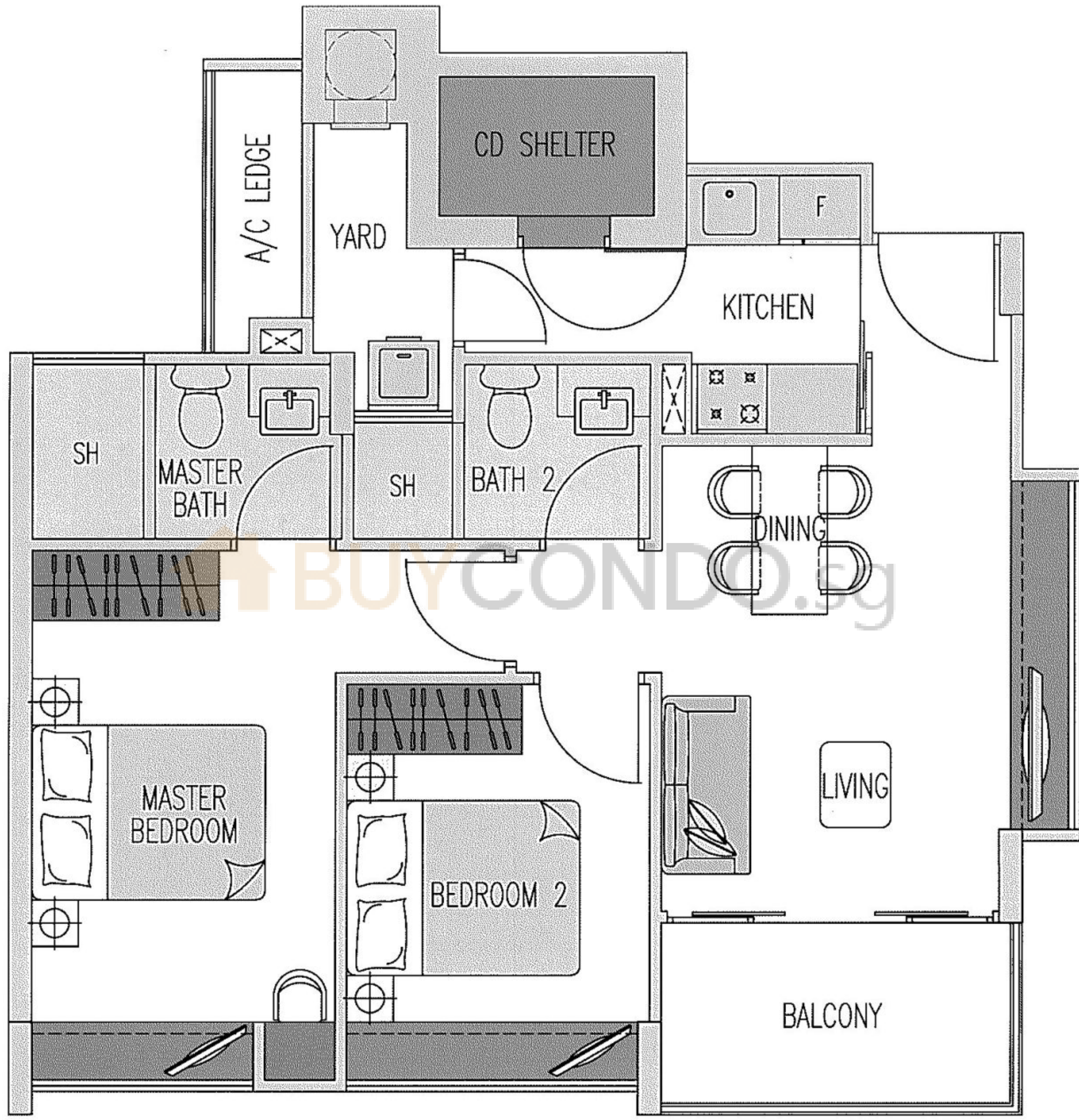


#02-04 & #02-11
#03-04 & #03-11
#04-04 & #04-11



Type C

(69m² / 743ft²)



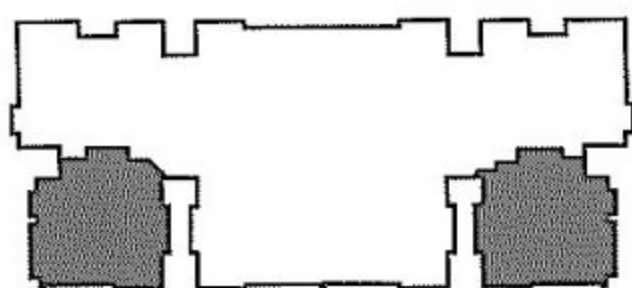
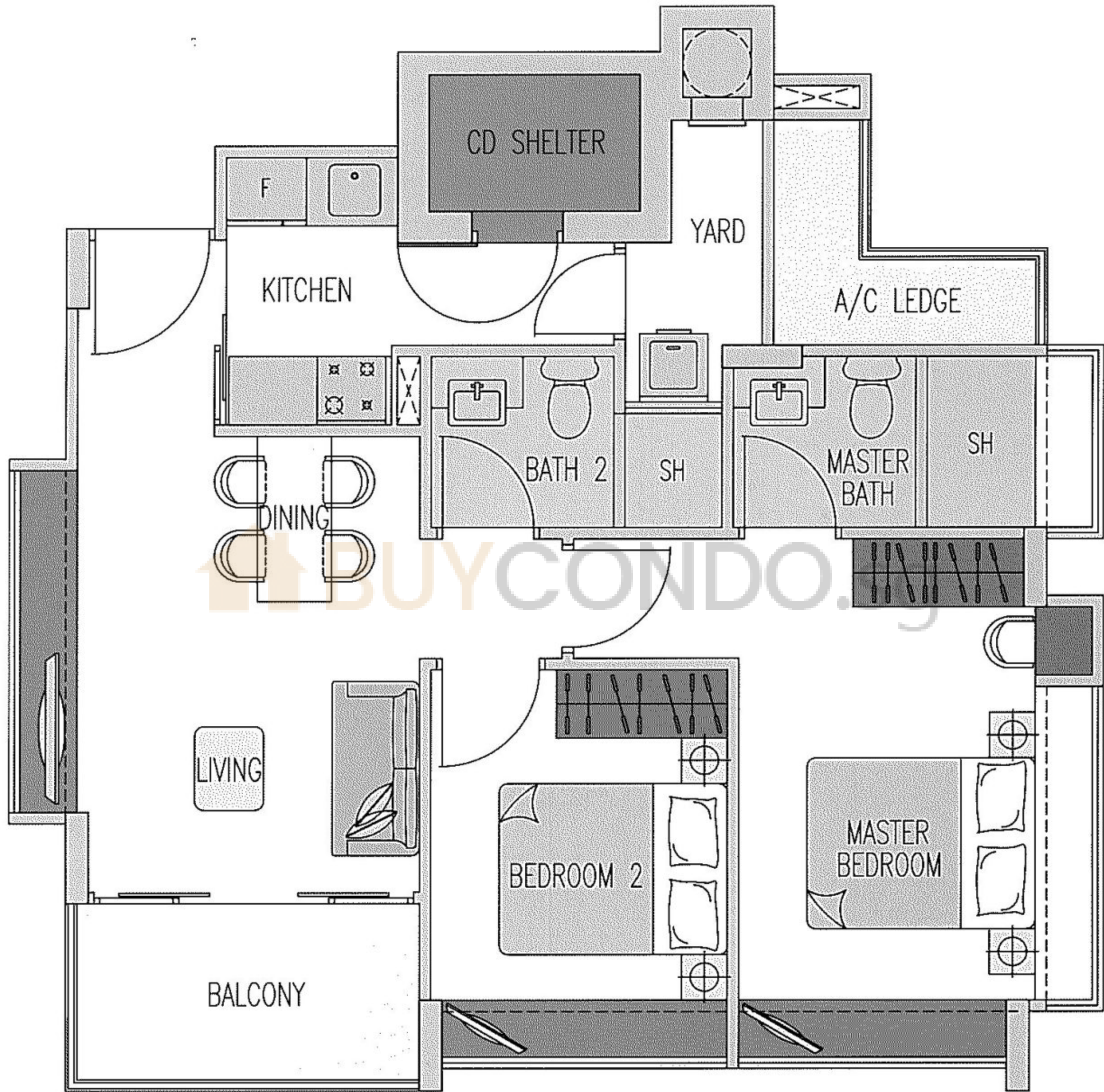
- #02-05 & #02-10
- #03-05 & #03-10
- #04-05 & #04-10

The above floor plans are subject to changes as may be approved by relevant authorities.
Plans are not drawn to scale.



Type D

(73m² / 786ft²)



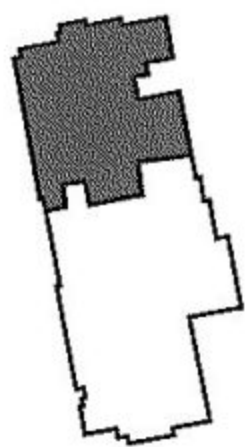
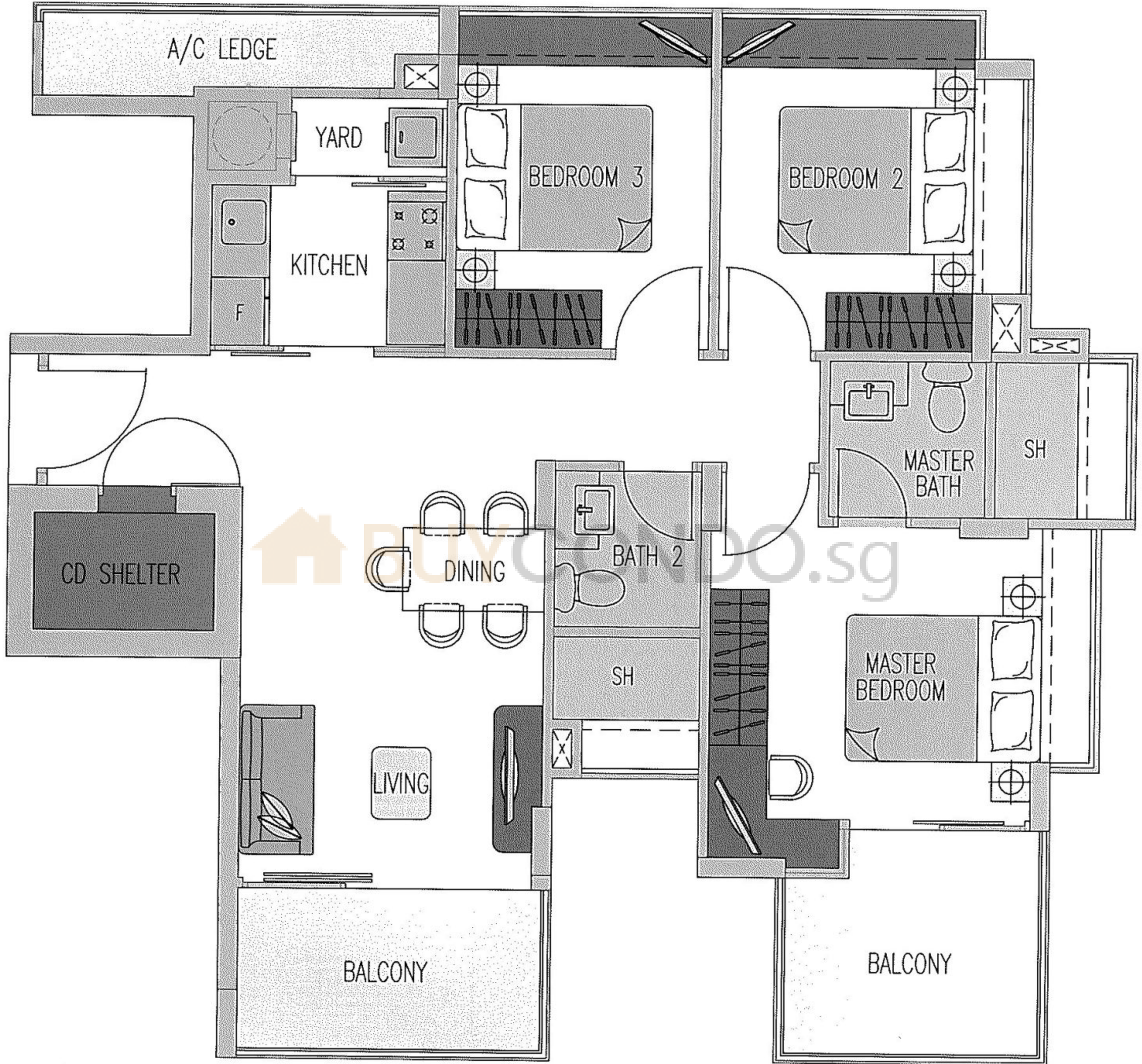
- #02-06 & #02-09
- #03-06 & #03-09
- #04-06 & #04-09

The above floor plans are subject to changes as may be approved by relevant authorities.
Plans are not drawn to scale.



Type G

(93m² / 1001ft²)



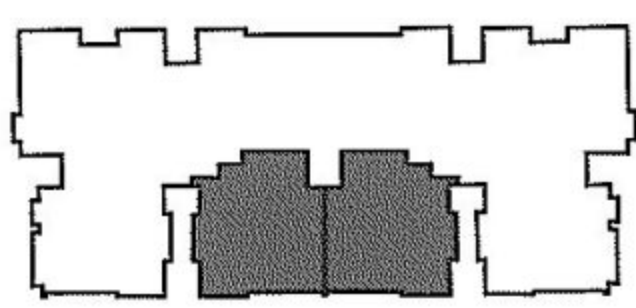
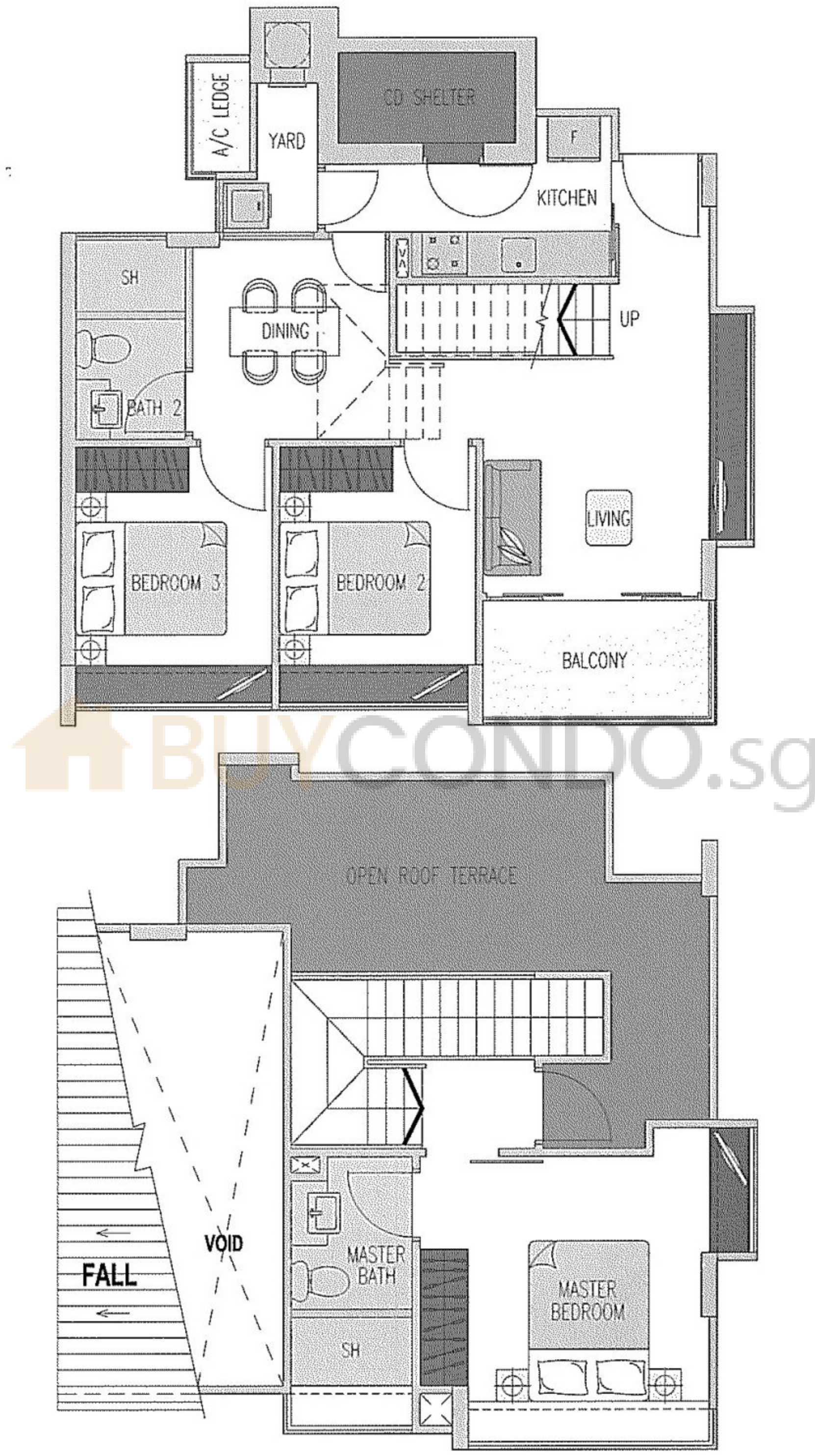
- #02-01 & #02-12
- #03-01 & #03-12
- #04-01 & #04-12

The above floor plans are subject to changes as may be approved by relevant authorities.
Plans are not drawn to scale.



Type C1

(113m² / 1216ft²)



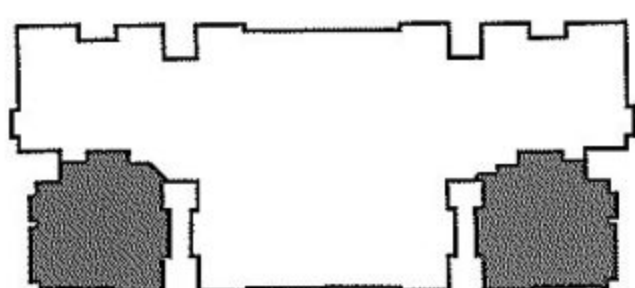
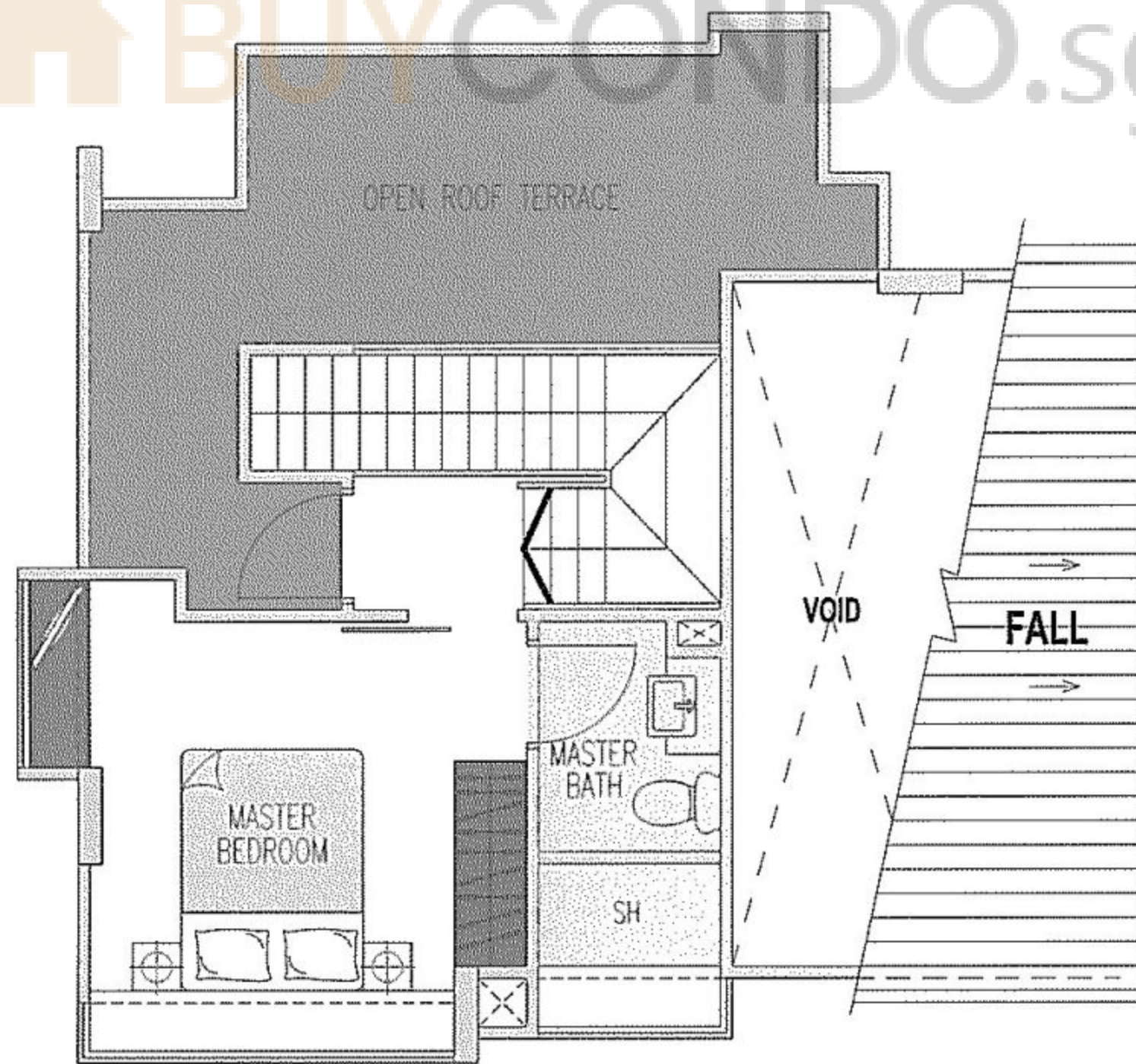
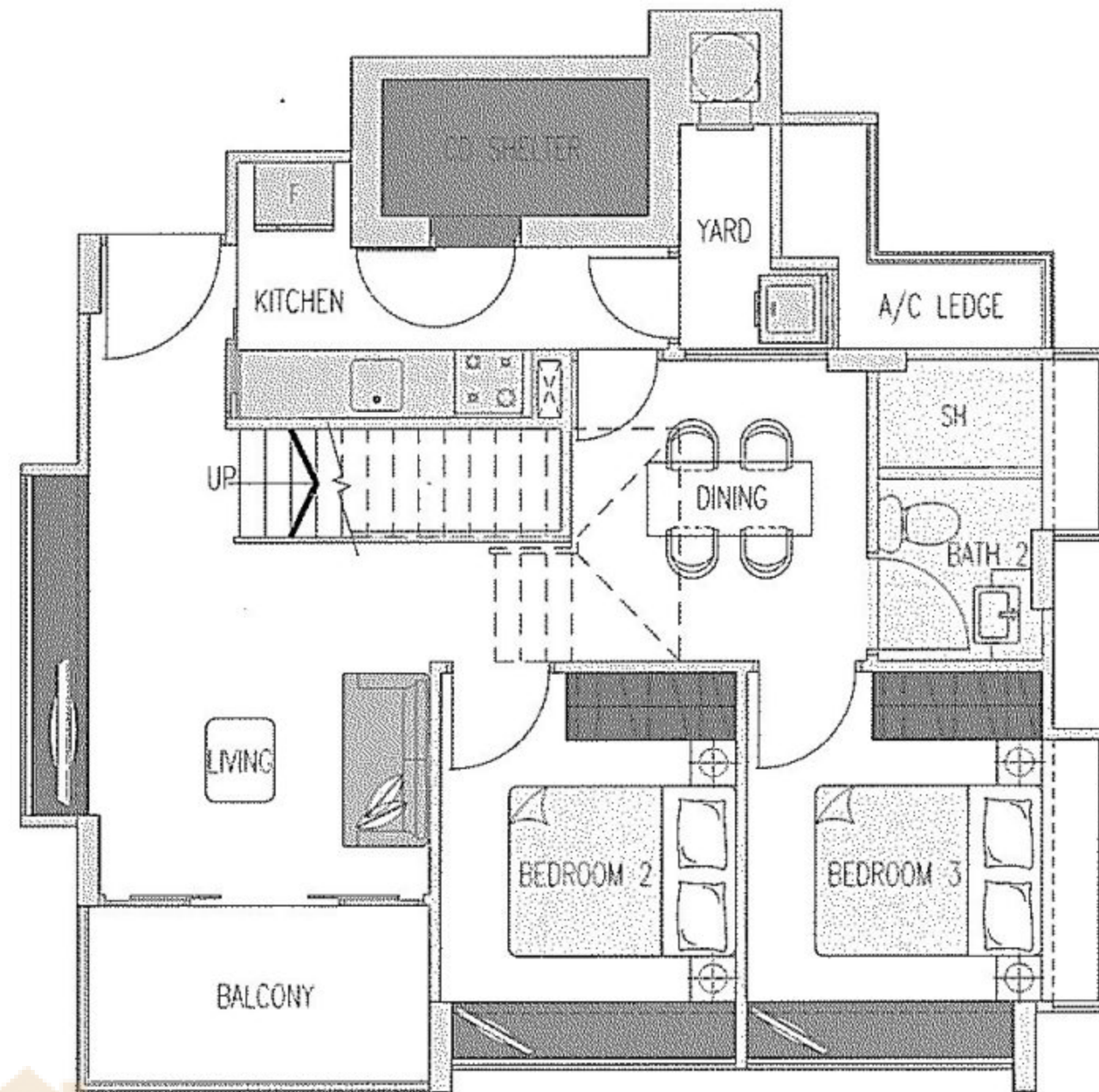
#05-05 & #05-10

The above floor plans are subject to changes as may be approved by relevant authorities.
Plans are not drawn to scale.



Type D1

(118m² / 1270ft²)



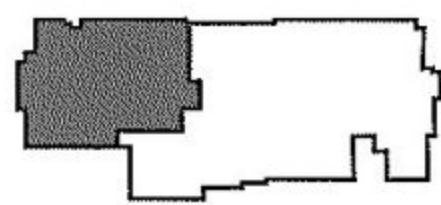
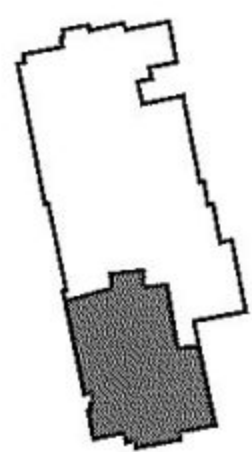
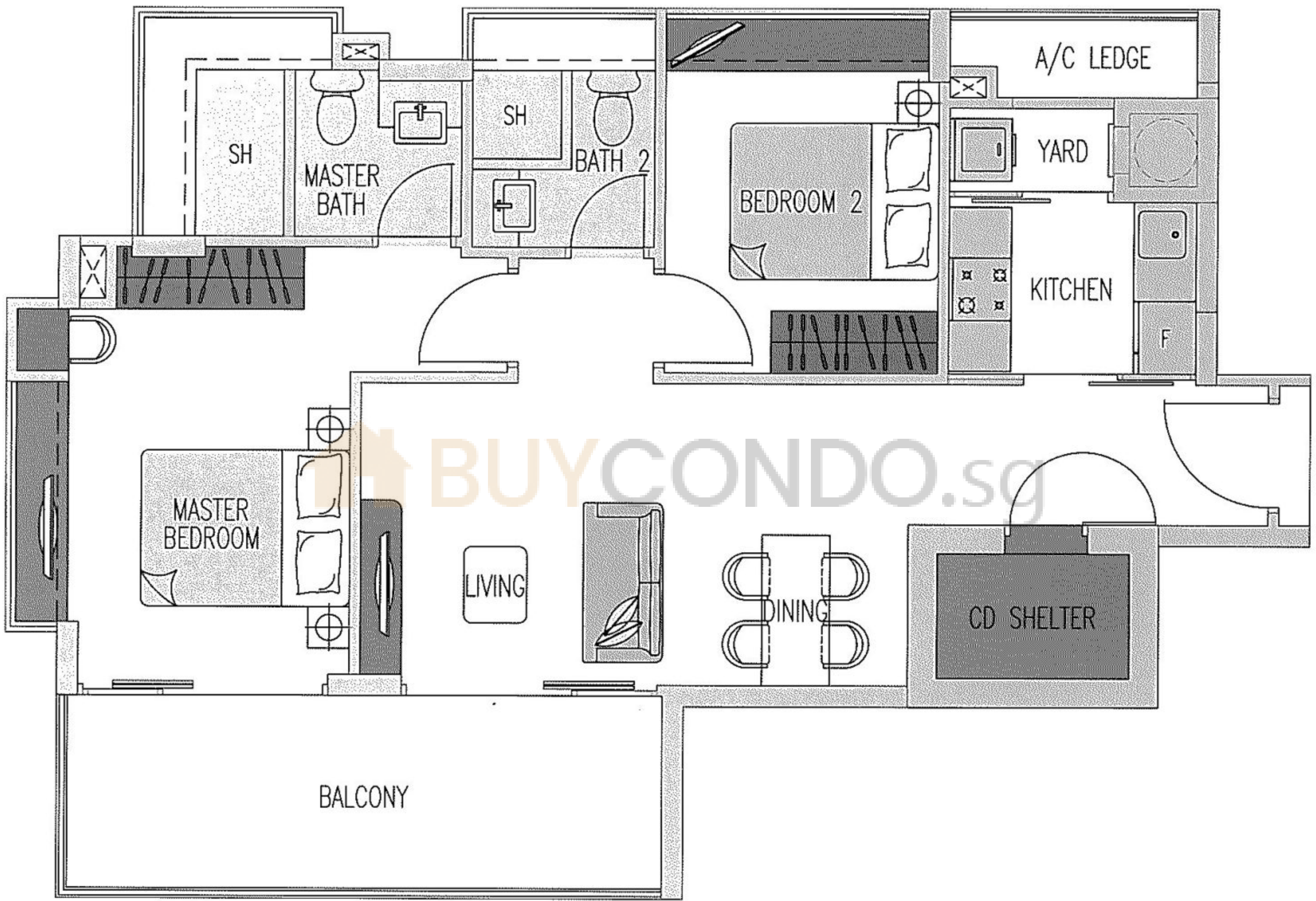
#05-06 & #05-09

The above floor plans are subject to changes as may be approved by relevant authorities.
Plans are not drawn to scale.



Type F

(82m² / 883ft²)



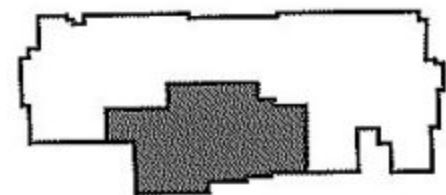
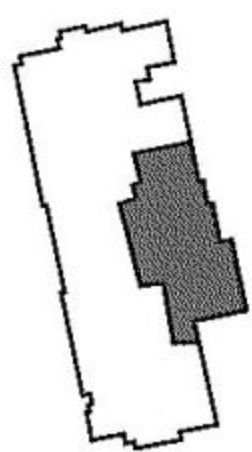
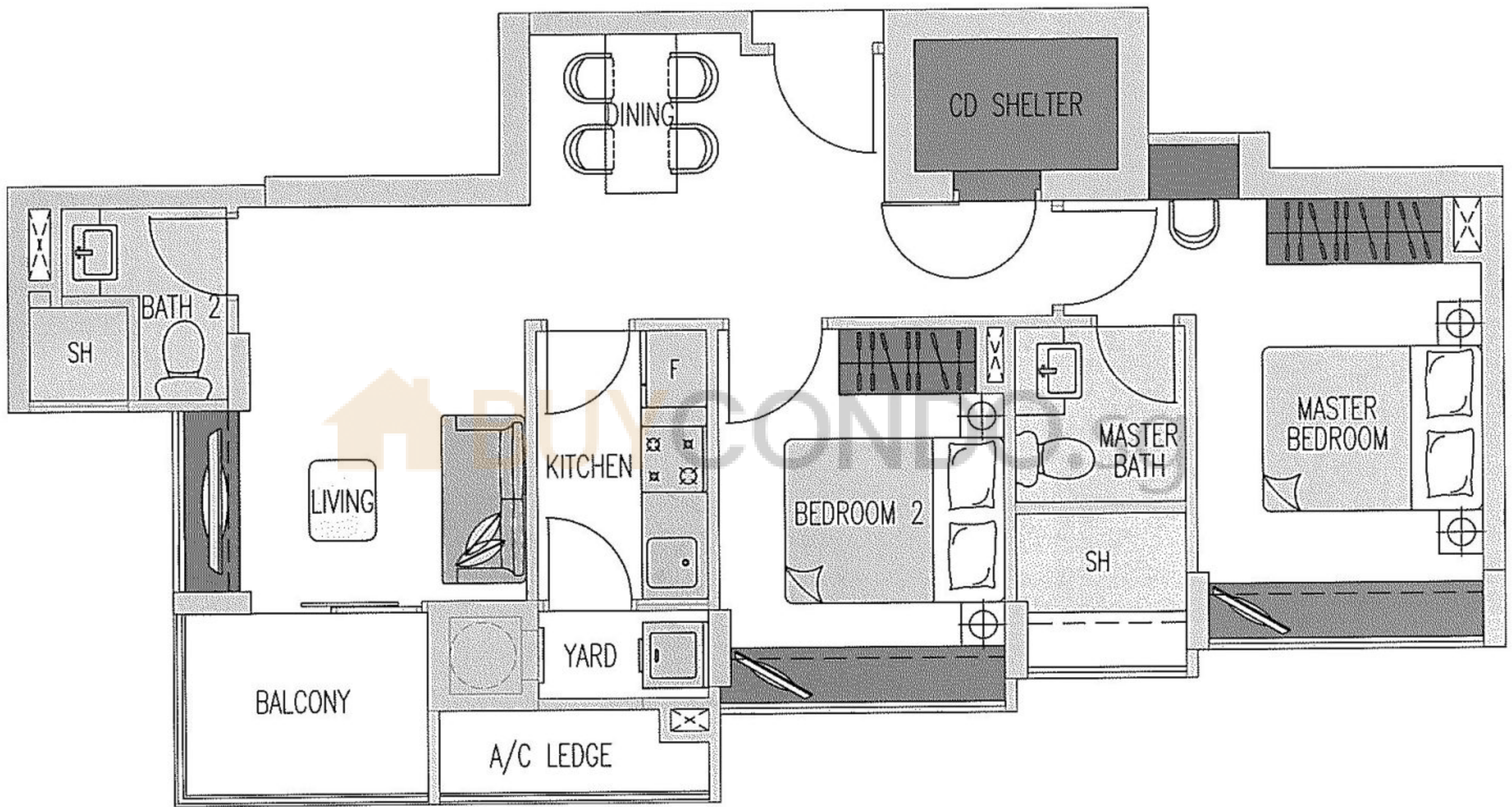
- #02-03 & #02-14
- #03-03 & #03-14
- #04-03 & #04-14

The above floor plans are subject to changes as may be approved by relevant authorities.
Plans are not drawn to scale.



Type E

(69m² / 743ft²)



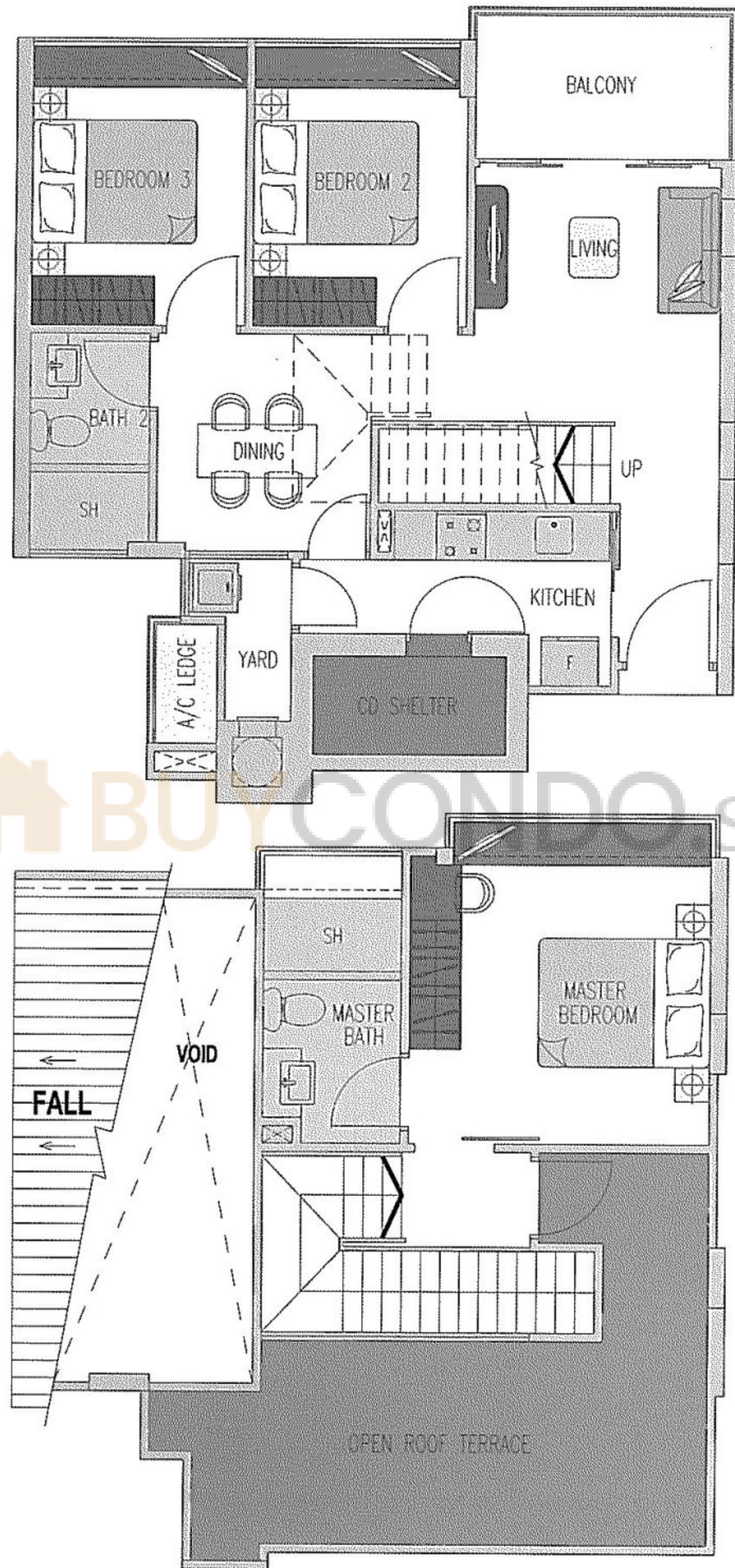
- #02-02 & #02-13
- #03-02 & #03-13
- #04-02 & #04-13

The above floor plans are subject to changes as may be approved by relevant authorities.
Plans are not drawn to scale.

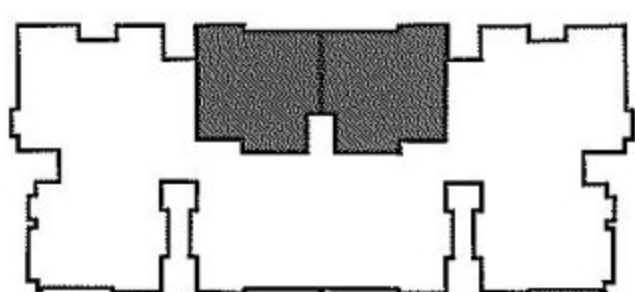


Type B1

(116m² / 1249ft²)



BUY CONDO.sg



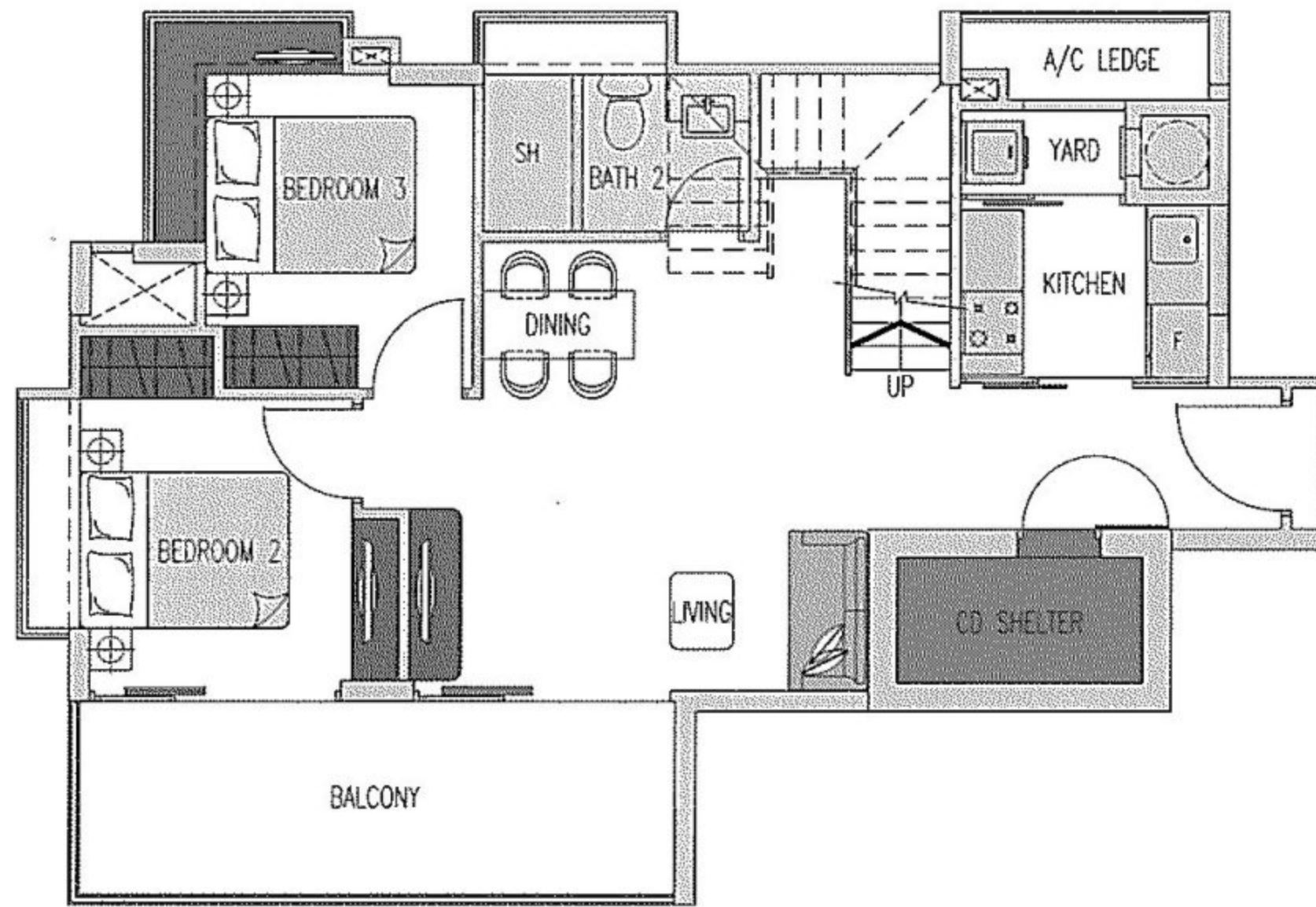
#05-04 & #05-11

The above floor plans are subject to changes as may be approved by relevant authorities.
Plans are not drawn to scale.

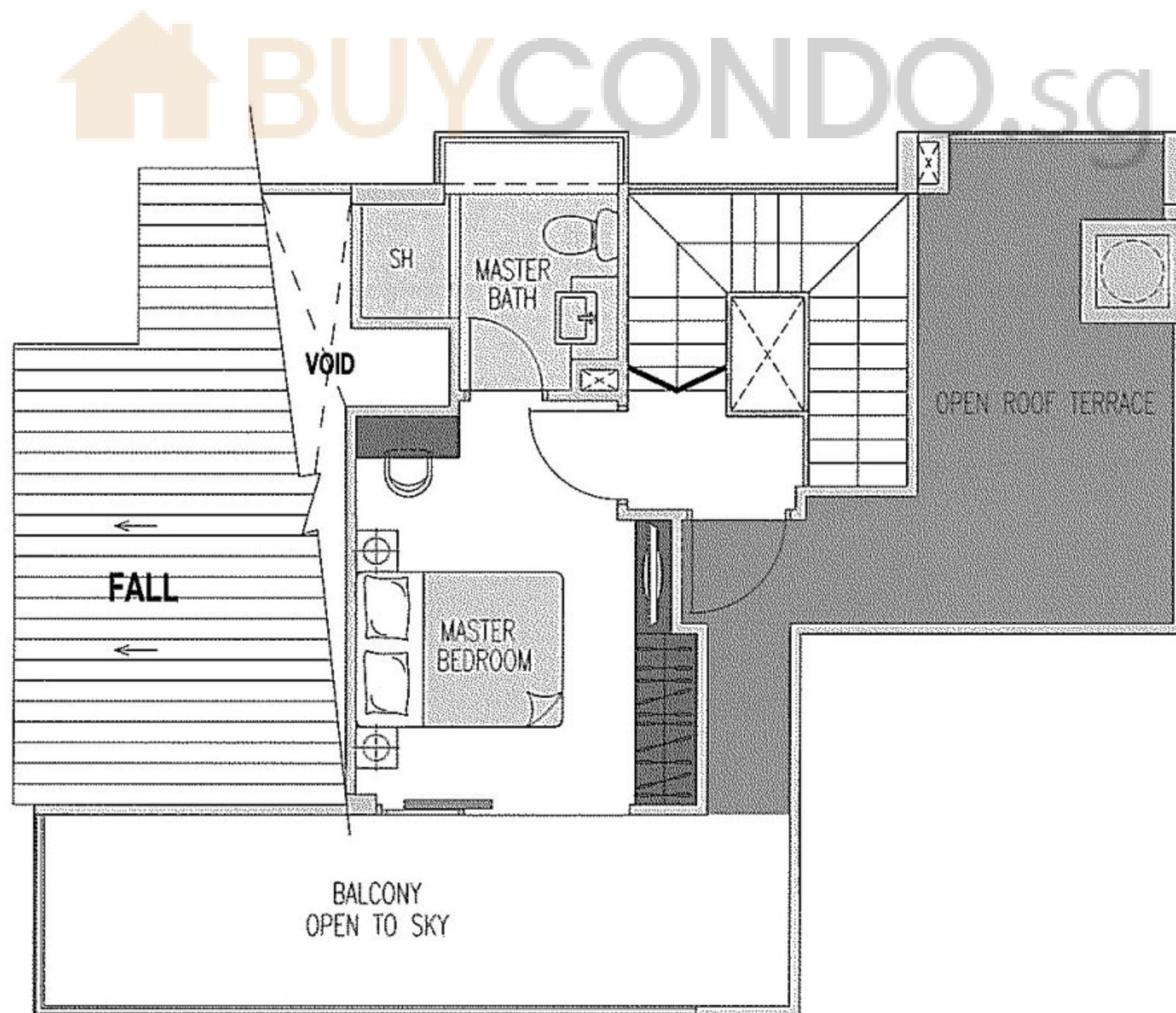


Type F1

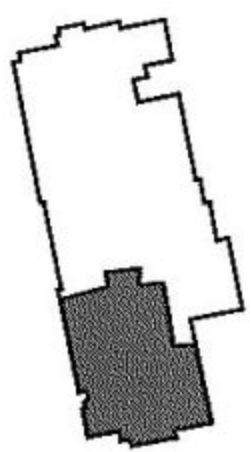
(133m² / 1431ft²)



Lower



Upper



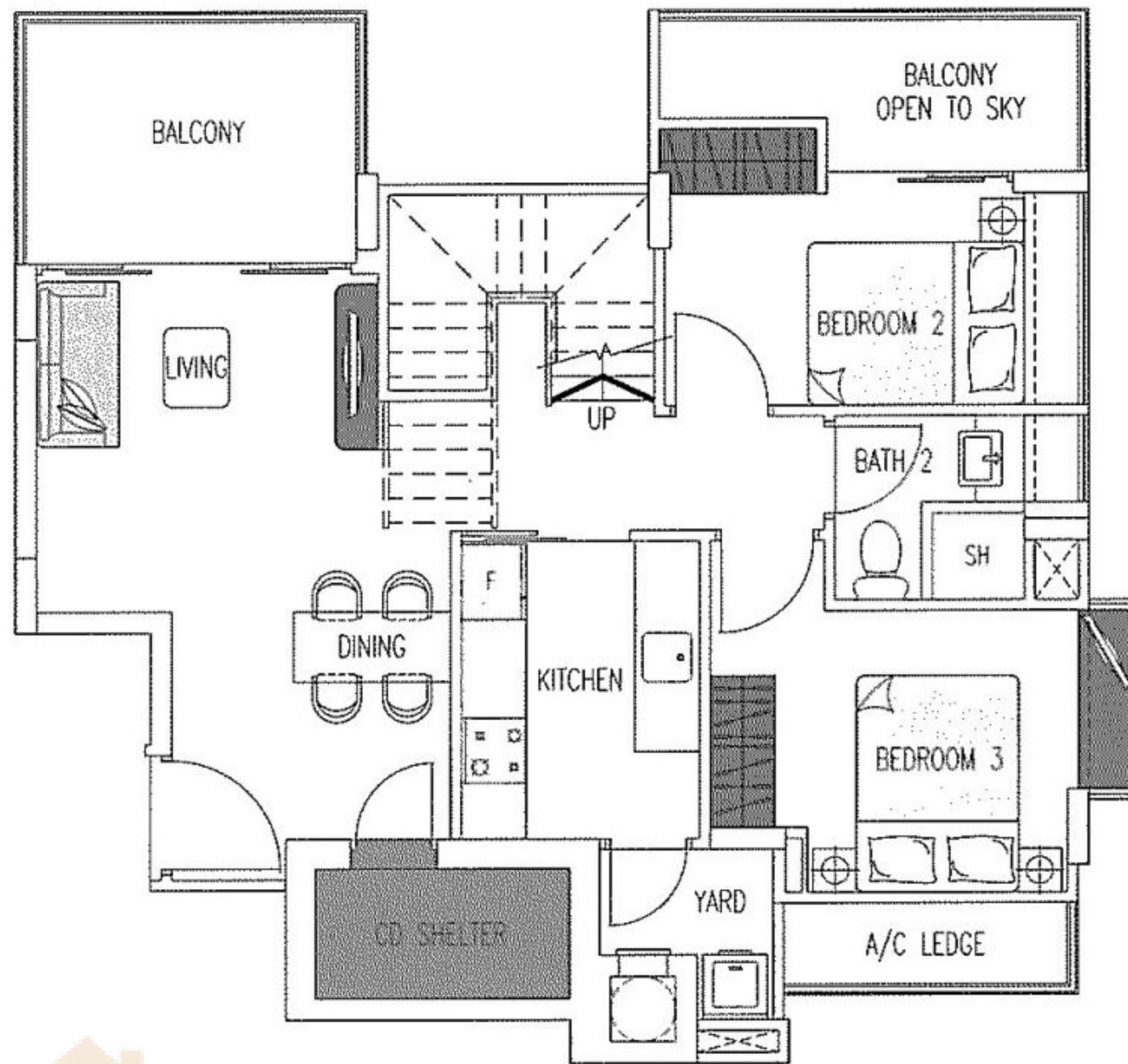
#05-03 & #05-14

The above floor plans are subject to changes as may be approved by relevant authorities.
Plans are not drawn to scale.

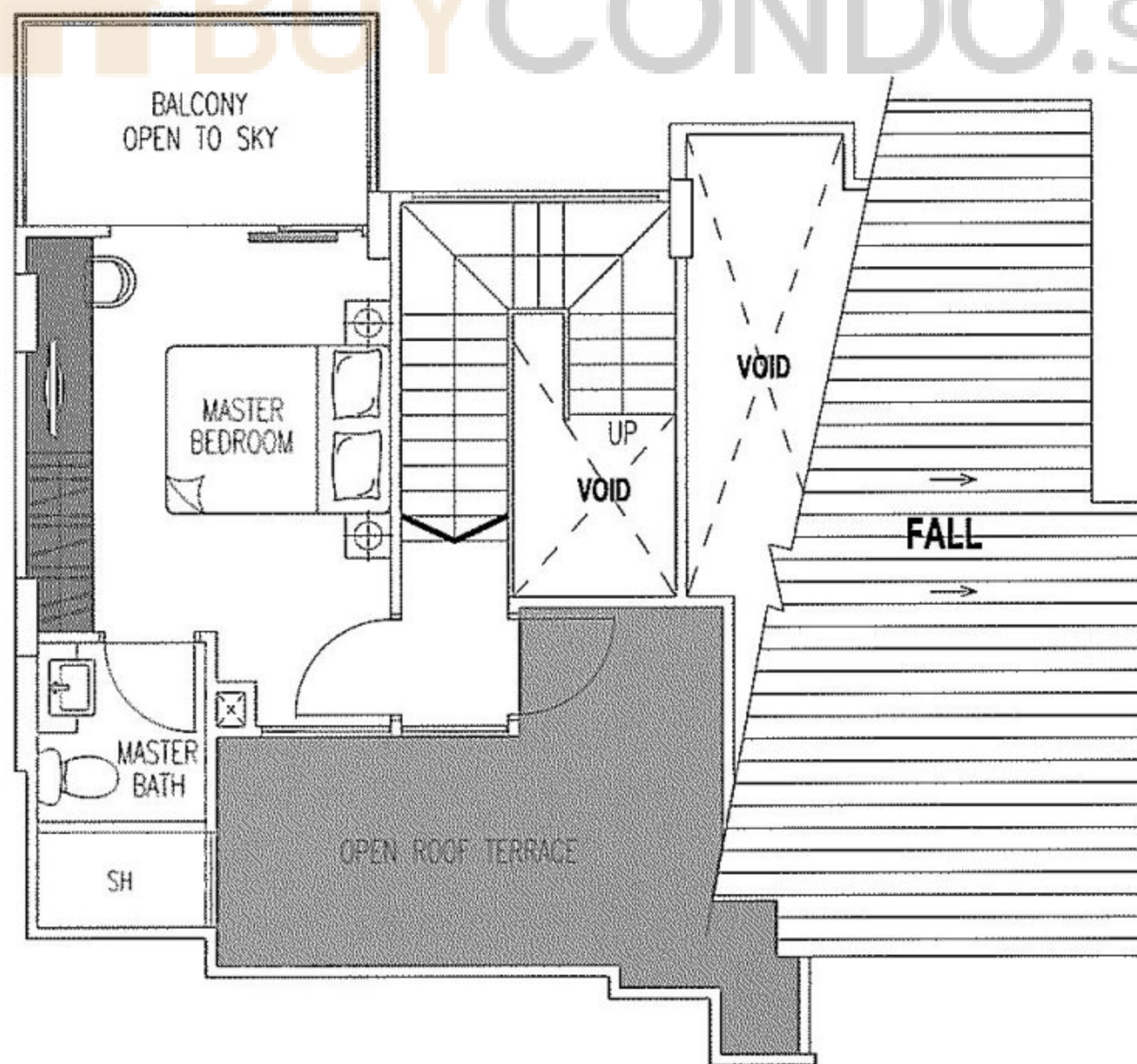


Type A1

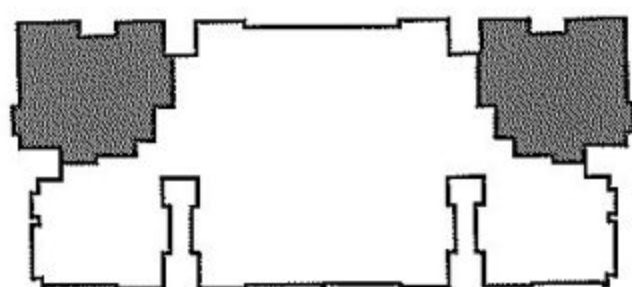
(121m² / 1302ft²)



Lower



Upper



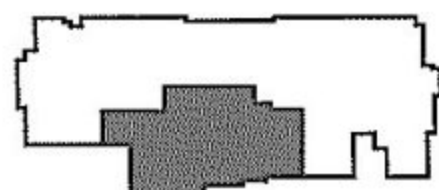
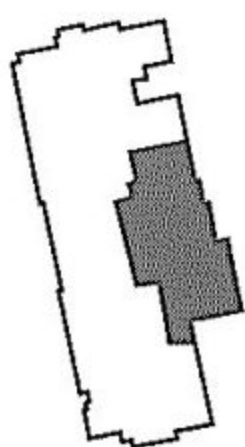
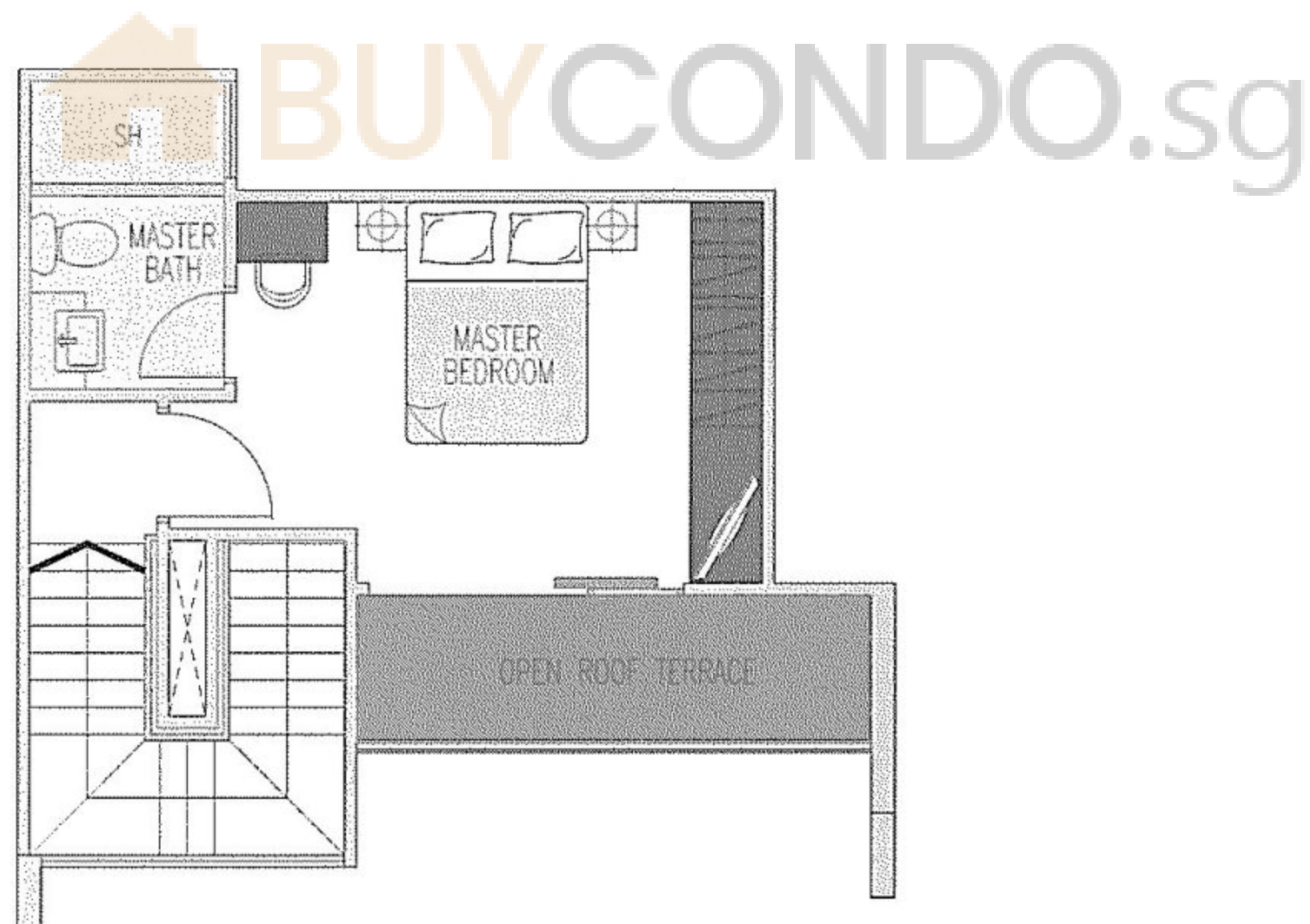
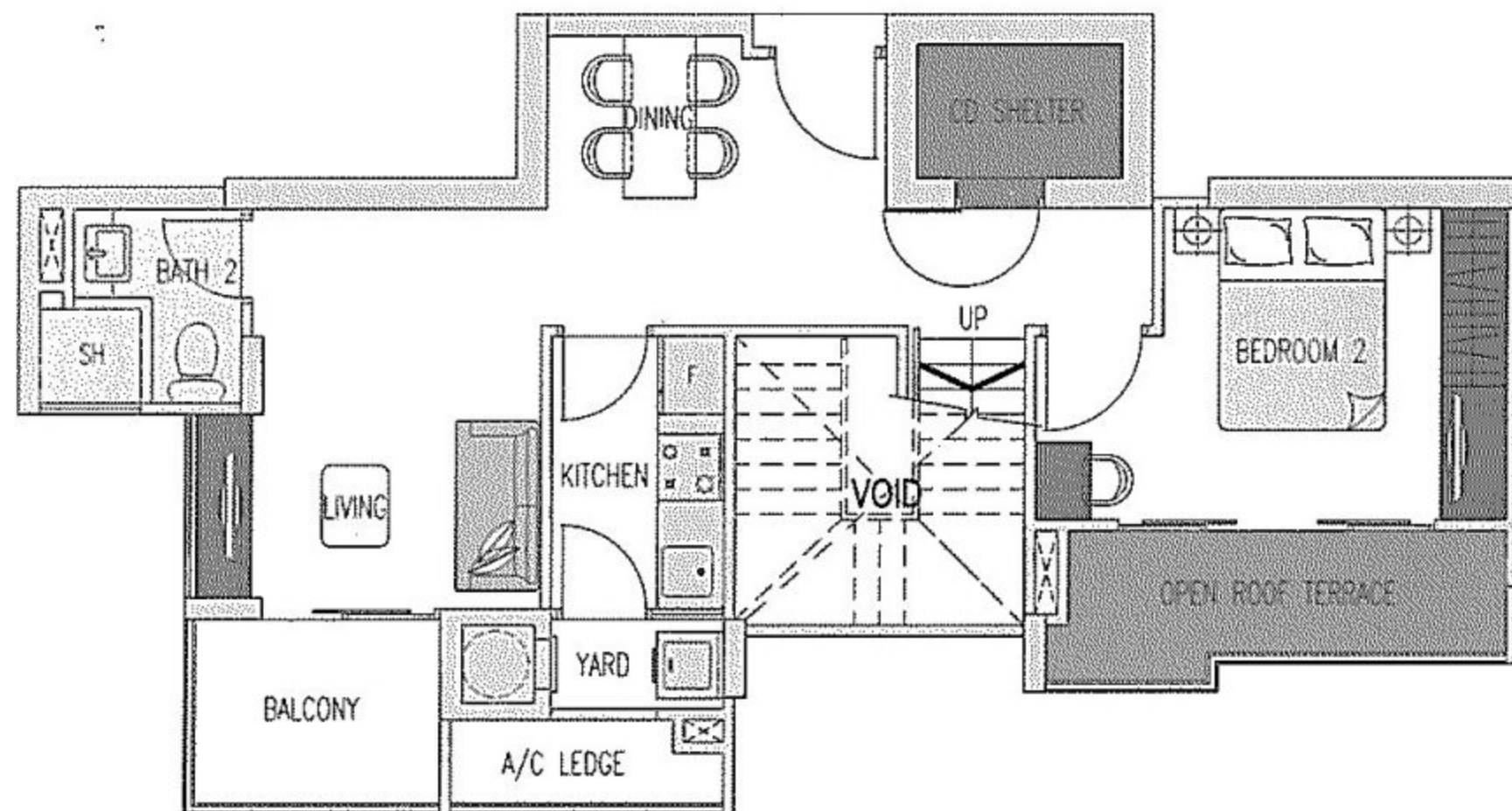
#05-07 & #05-08

The above floor plans are subject to changes as may be approved by relevant authorities.
Plans are not drawn to scale.



Type E1

(94m² / 1012ft²)



#05-02 & #05-13

The above floor plans are subject to changes as may be approved by relevant authorities.
Plans are not drawn to scale.

