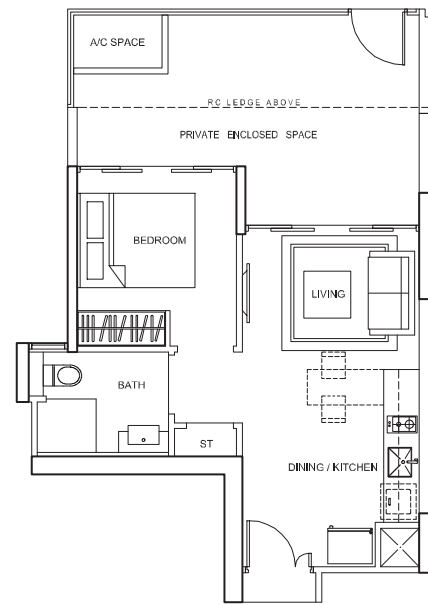
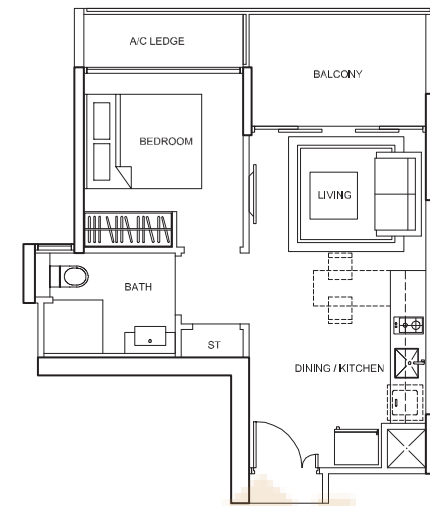


1-BEDROOM



TYPE A1P

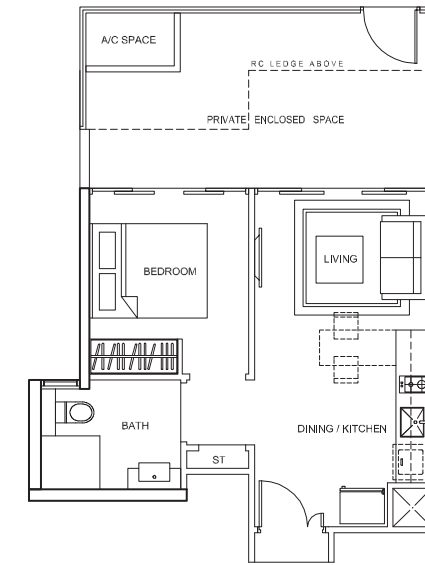
Area : 54 sq.m
 Unit(s) : #01-28 (mirror image)
 #01-29
 #01-36 (mirror image)
 #01-37



TYPE A1

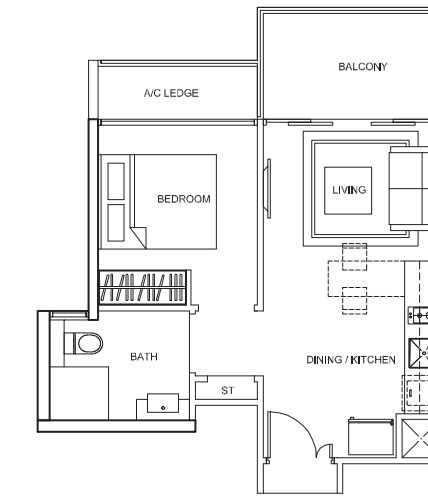
Area : 44 sq.m
 Unit(s) : #02-28 to #15-28 (mirror image)
 #02-29 to #15-29
 #02-36 to #15-36 (mirror image)
 #02-37 to #15-37

1-BEDROOM



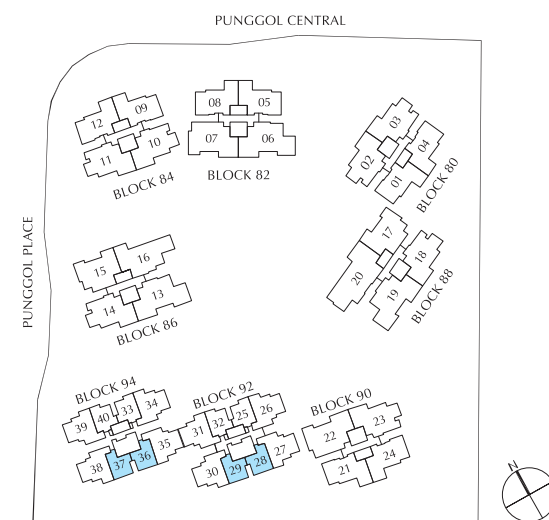
TYPE A2P

Area : 53 sq.m
 Unit(s) : #01-25
 #01-32 (mirror image)
 #01-33
 #01-40 (mirror image)

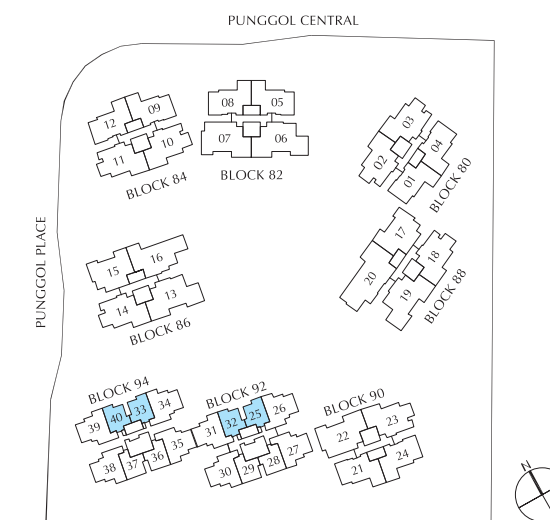


TYPE A2

Area : 43 sq.m
 Unit(s) : #02-25 to #15-25
 #02-32 to #15-32 (mirror image)
 #02-33 to #15-33
 #02-40 to #15-40 (mirror image)

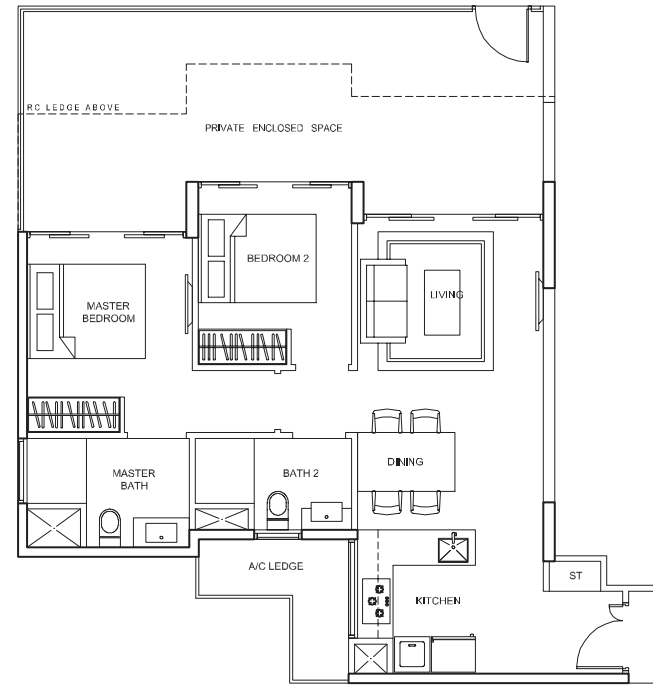


Area includes A/C ledge, balcony, PES, private roof terrace and void (where applicable). Orientations and facings will differ depending on the unit you are purchasing. Please refer to the key plan. All plans are not to scale and are subject to changes as may be approved by the relevant authorities. All floor areas are estimates and are subject to final survey.



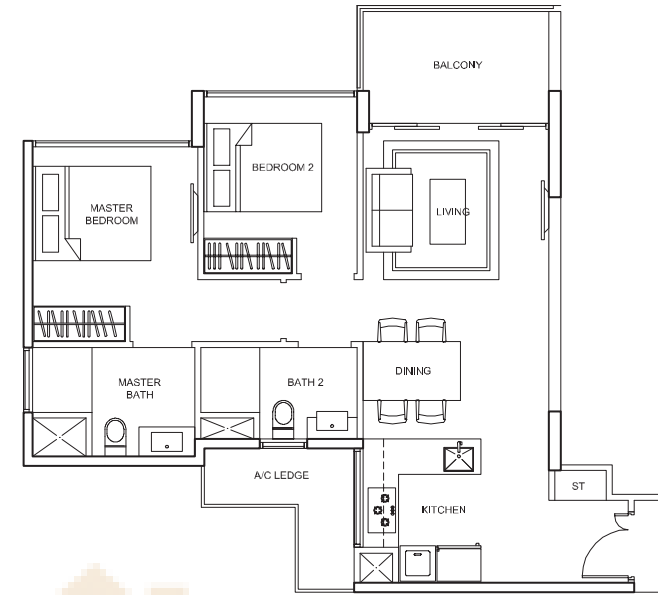
Area includes A/C ledge, balcony, PES, private roof terrace and void (where applicable). Orientations and facings will differ depending on the unit you are purchasing. Please refer to the key plan. All plans are not to scale and are subject to changes as may be approved by the relevant authorities. All floor areas are estimates and are subject to final survey.

2-BEDROOM



TYPE B1aP

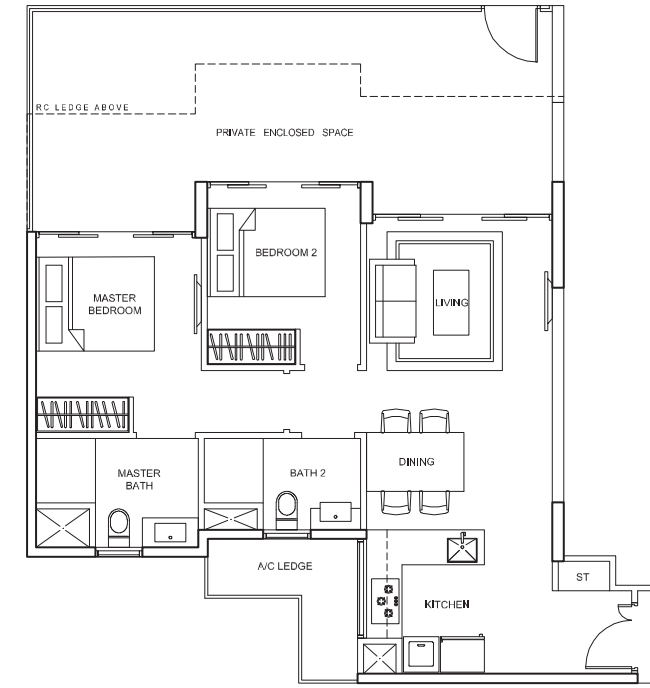
Area : 96 sq.m
Unit : #01-27



TYPE B1a

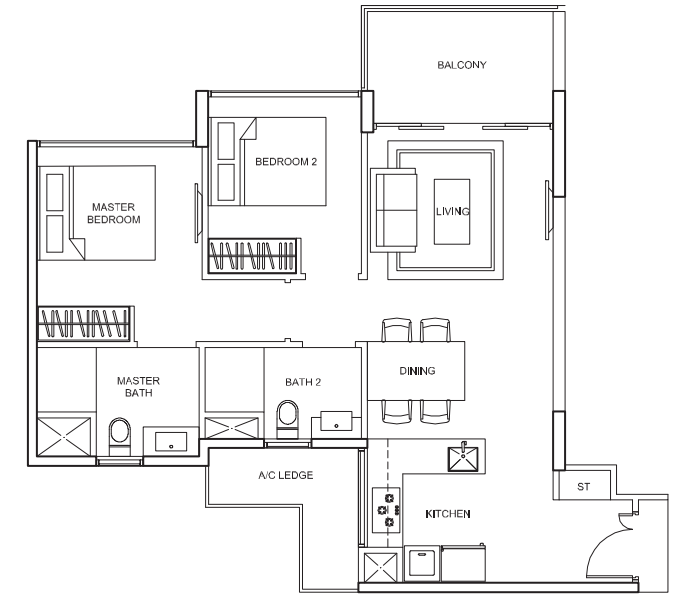
Area : 71 sq.m
Unit(s) : #02-27 to #15-27

2-BEDROOM



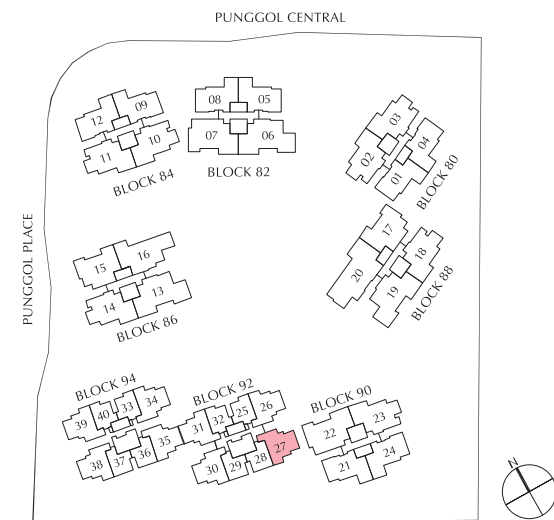
TYPE B1bP

Area : 96 sq.m
Unit : #01-35

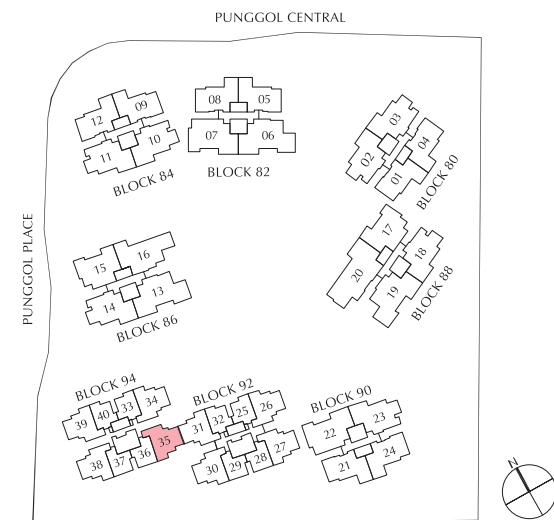


TYPE B1b

Area : 71 sq.m
Unit(s) : #02-35 to #15-35



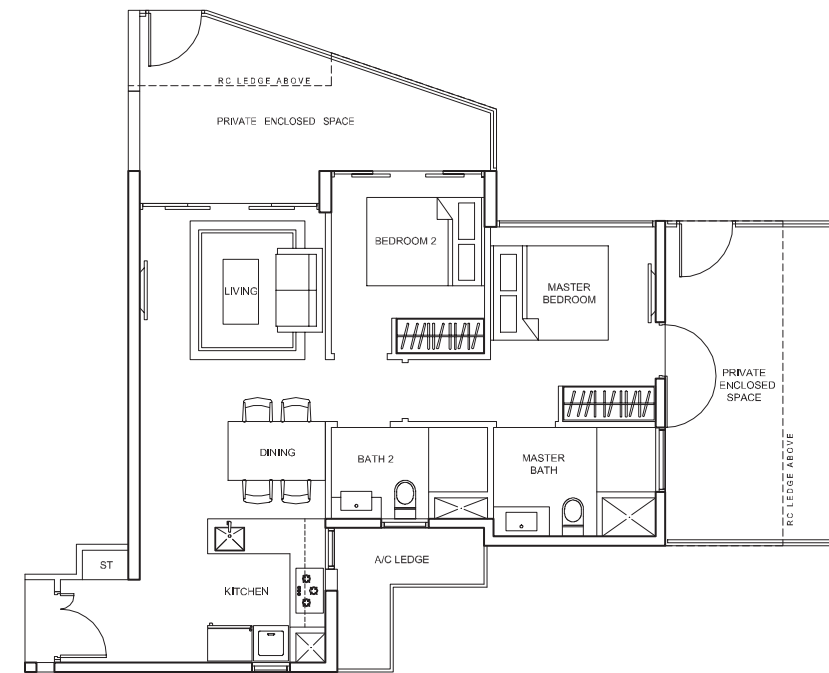
Area includes A/C ledge, balcony, PES, private roof terrace and void (where applicable). Orientations and facings will differ depending on the unit you are purchasing. Please refer to the key plan. All plans are not to scale and are subject to changes as may be approved by the relevant authorities. All floor areas are estimates and are subject to final survey.



Area includes A/C ledge, balcony, PES, private roof terrace and void (where applicable). Orientations and facings will differ depending on the unit you are purchasing. Please refer to the key plan. All plans are not to scale and are subject to changes as may be approved by the relevant authorities. All floor areas are estimates and are subject to final survey.

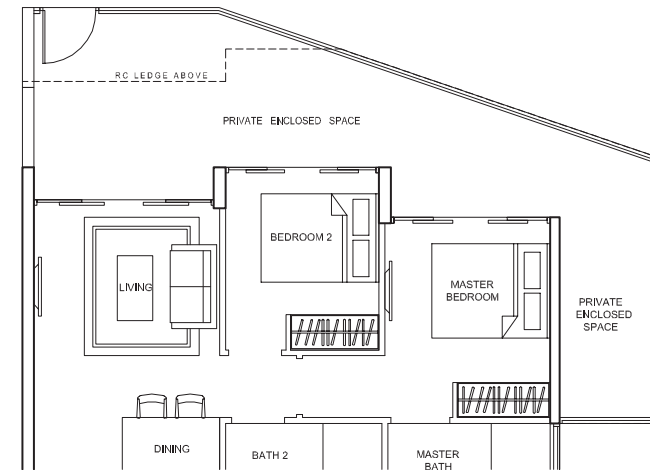


2-BEDROOM



TYPE B2P1

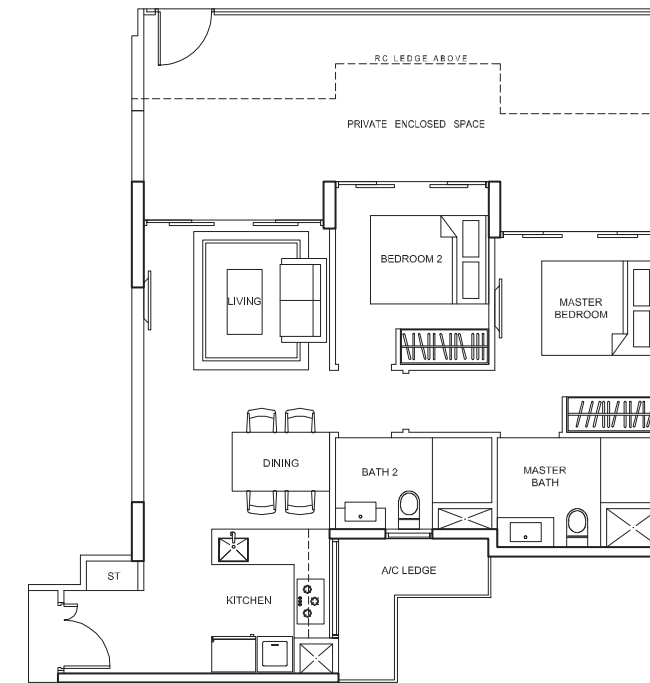
Area : 96 sq.m
Unit : #01-30



TYPE B2P2

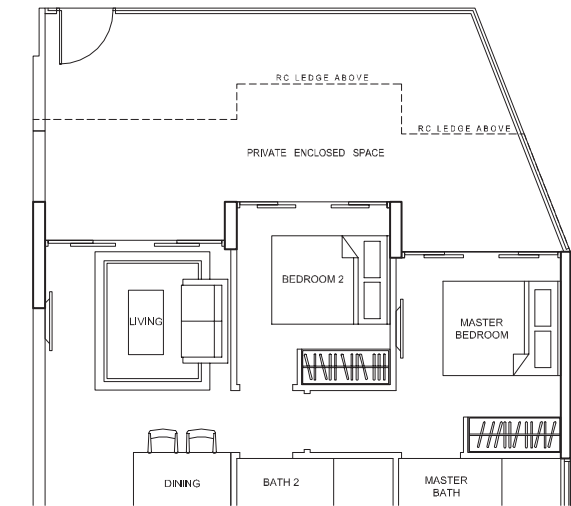
Area : 96 sq.m
Unit : #01-38

2-BEDROOM



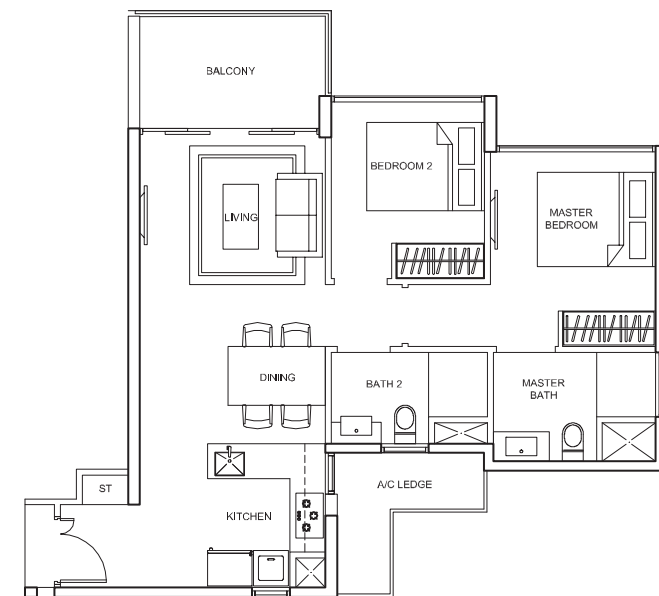
TYPE B3aP1

Area : 95 sq.m
Unit(s) : #01-26
#01-34



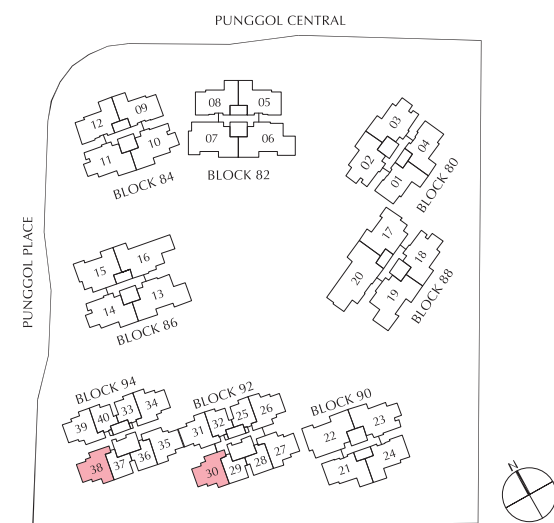
TYPE B3aP2

Area : 95 sq.m
Unit : #01-39 (mirror image)

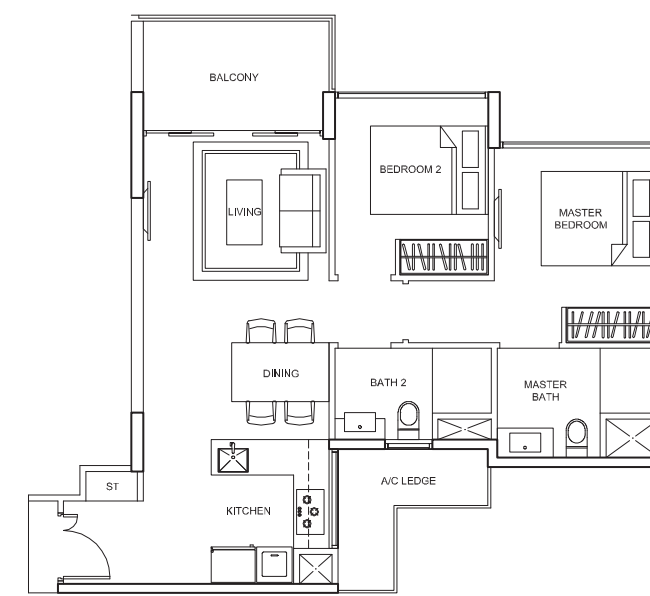


TYPE B2

Area : 71 sq.m
Unit(s) : #02-30 to #15-30
#02-38 to #15-38

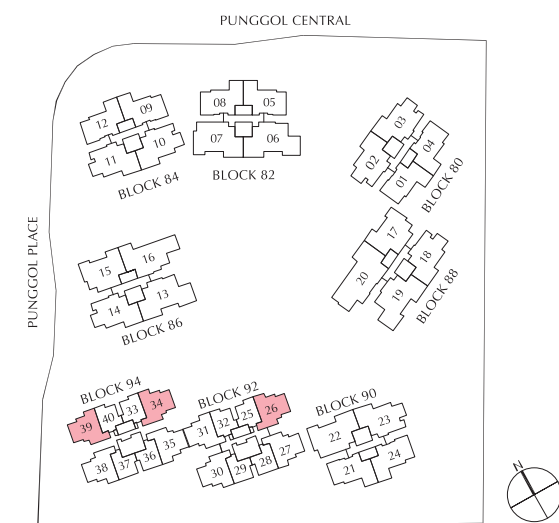


Area includes A/C ledge, balcony, PES, private roof terrace and void (where applicable). Orientations and facings will differ depending on the unit you are purchasing. Please refer to the key plan. All plans are not to scale and are subject to changes as may be approved by the relevant authorities. All floor areas are estimates and are subject to final survey.



TYPE B3a

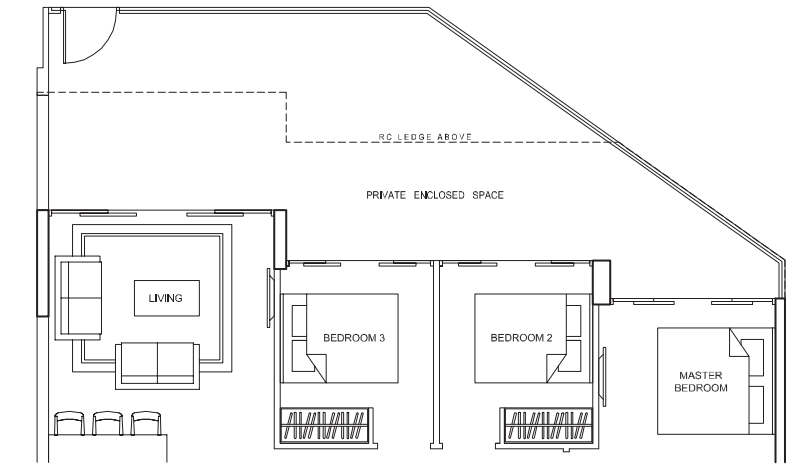
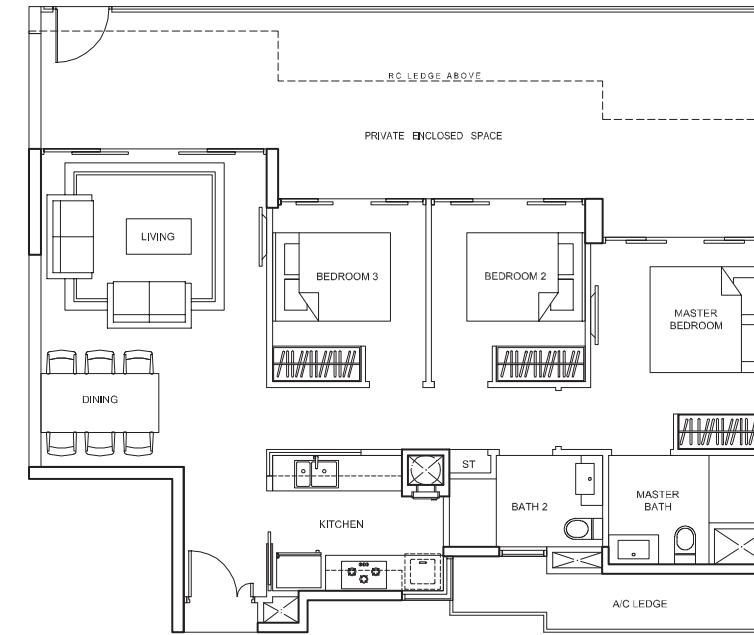
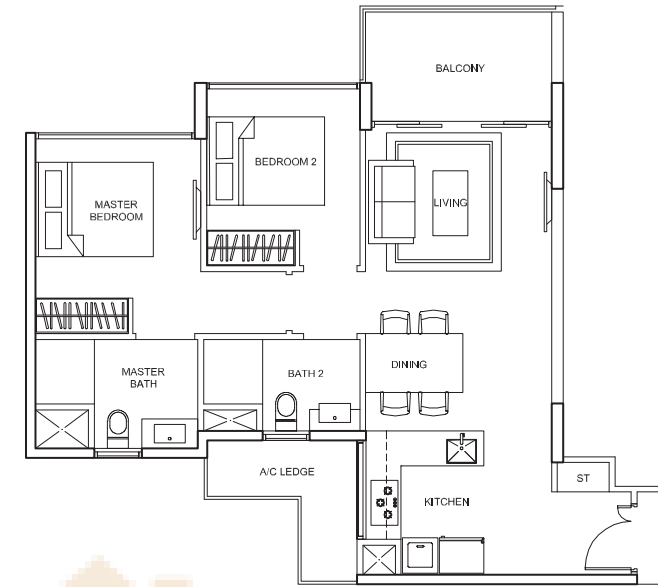
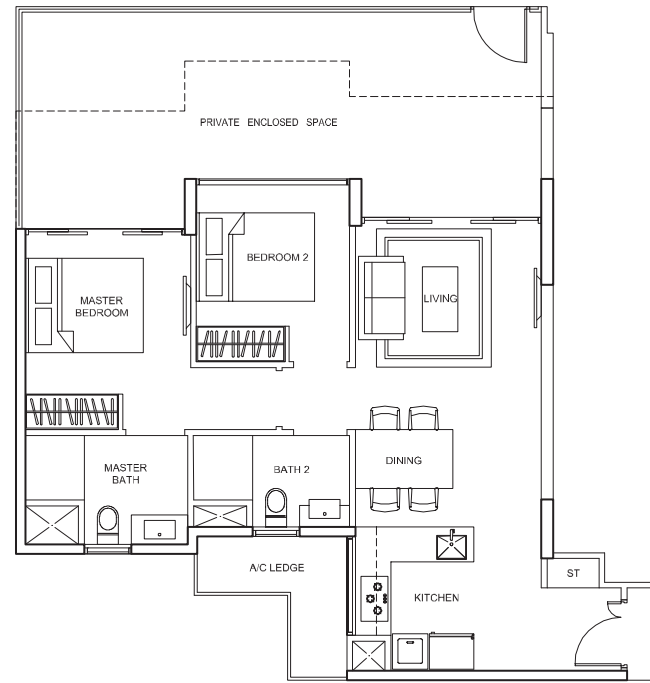
Area : 71 sq.m
Unit(s) : #02-26 to #15-26
#02-34 to #15-34
#02-39 to #15-39 (mirror image)



Area includes A/C ledge, balcony, PES, private roof terrace and void (where applicable). Orientations and facings will differ depending on the unit you are purchasing. Please refer to the key plan. All plans are not to scale and are subject to changes as may be approved by the relevant authorities. All floor areas are estimates and are subject to final survey.

2-BEDROOM

3-BEDROOM



TYPE B3bP

Area : 95 sq.m
Unit : #01-31

TYPE B3b

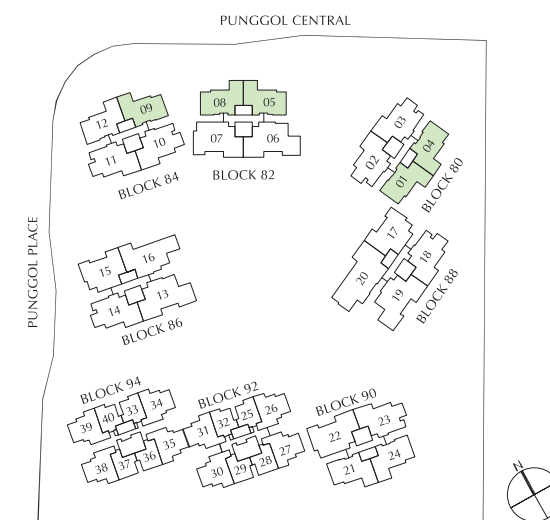
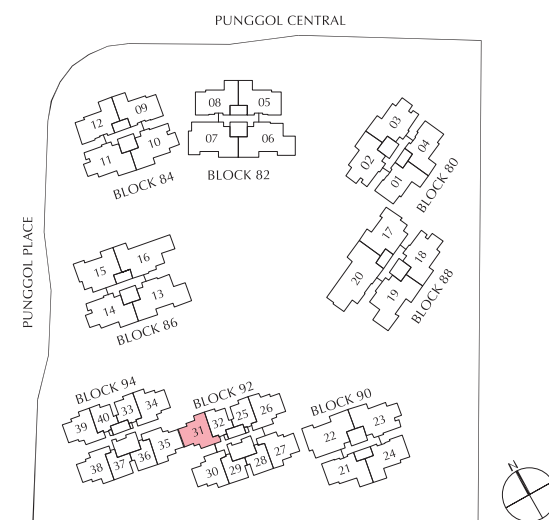
Area : 71 sq.m
Unit(s) : #02-31 to #15-31

TYPE C1P1

Area : 123 sq.m
Unit(s) : #01-01
#01-05
#01-08 (mirror image)
#01-09

TYPE C1P2

Area : 123 sq.m
Unit : #01-04 (mirror image)

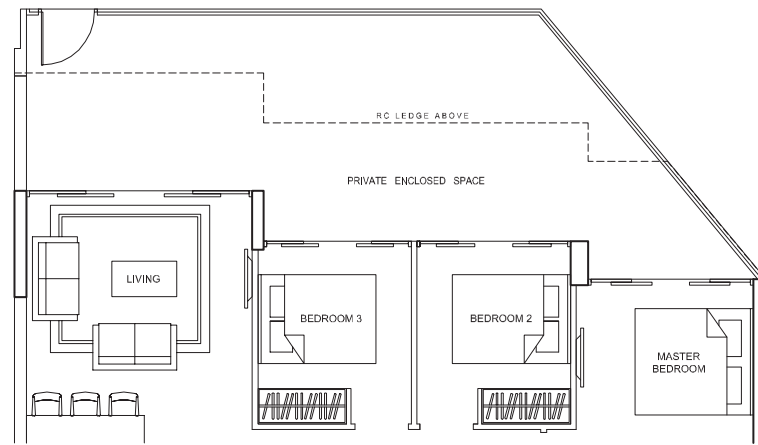


Area includes A/C ledge, balcony, PES, private roof terrace and void (where applicable). Orientations and facings will differ depending on the unit you are purchasing. Please refer to the key plan. All plans are not to scale and are subject to changes as may be approved by the relevant authorities. All floor areas are estimates and are subject to final survey.

Area includes A/C ledge, balcony, PES, private roof terrace and void (where applicable). Orientations and facings will differ depending on the unit you are purchasing. Please refer to the key plan. All plans are not to scale and are subject to changes as may be approved by the relevant authorities. All floor areas are estimates and are subject to final survey.

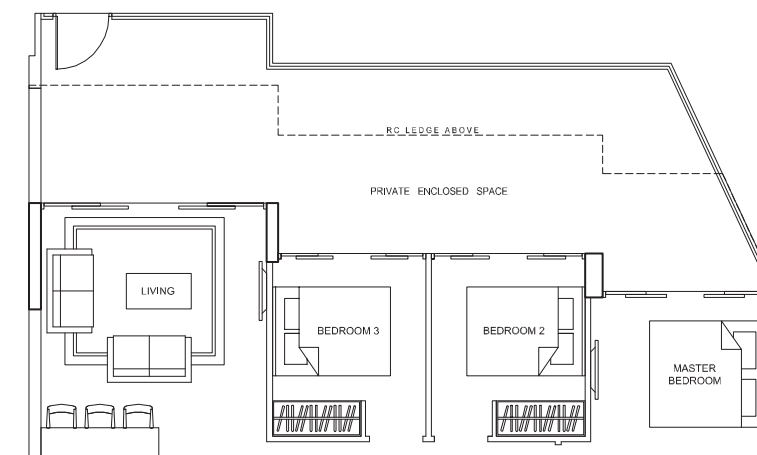
3-BEDROOM

3-BEDROOM



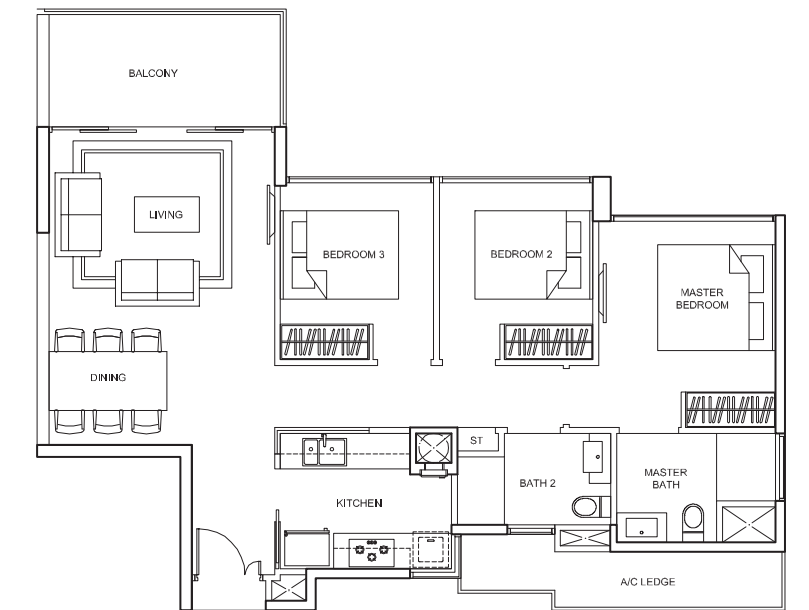
TYPE C1P3

Area : 123 sq.m
Unit : #01-12 (mirror image)



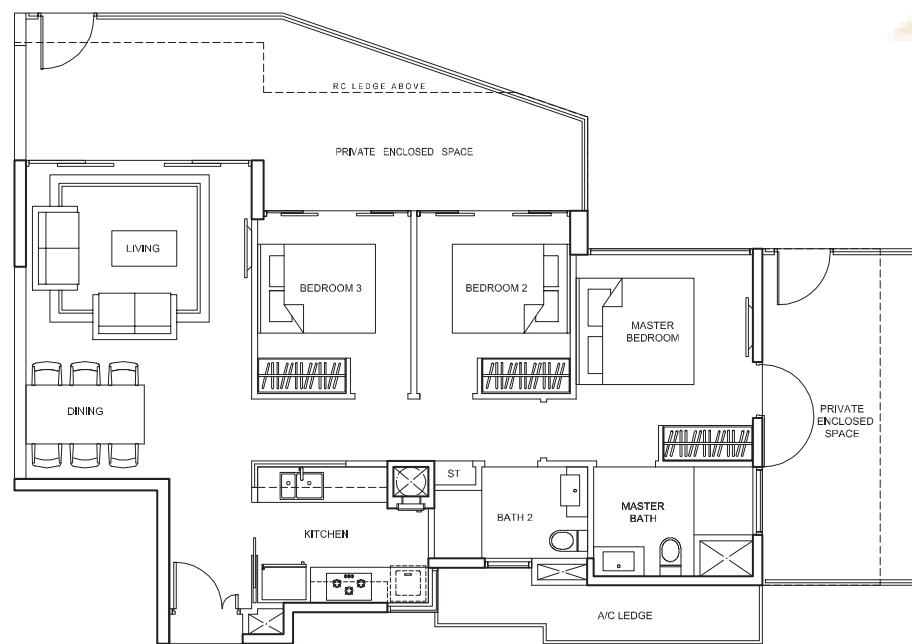
TYPE C1P5

Area : 123 sq.m
Unit : #01-24 (mirror image)



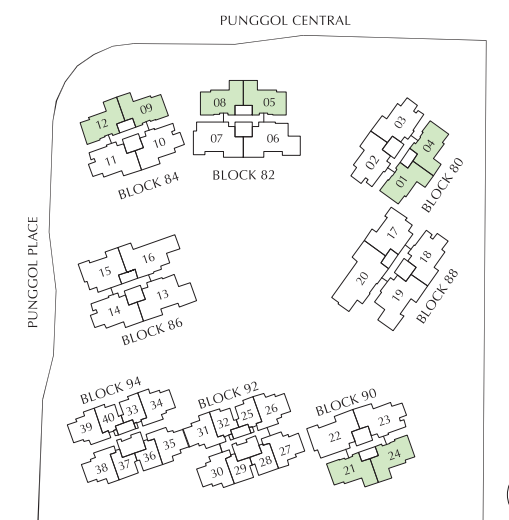
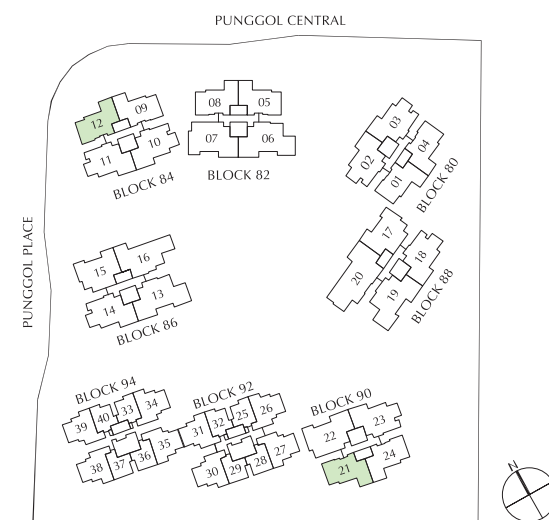
TYPE C1

Area : 92 sq.m
Unit(s) : #02-01 to #15-01
#02-04 to #15-04 (mirror image)
#02-05 to #15-05
#02-08 to #15-08 (mirror image)
#02-09 to #15-09
#02-12 to #15-12 (mirror image)
#02-21 to #15-21
#02-24 to #15-24 (mirror image)



TYPE C1P4

Area : 123 sq.m
Unit : #01-21

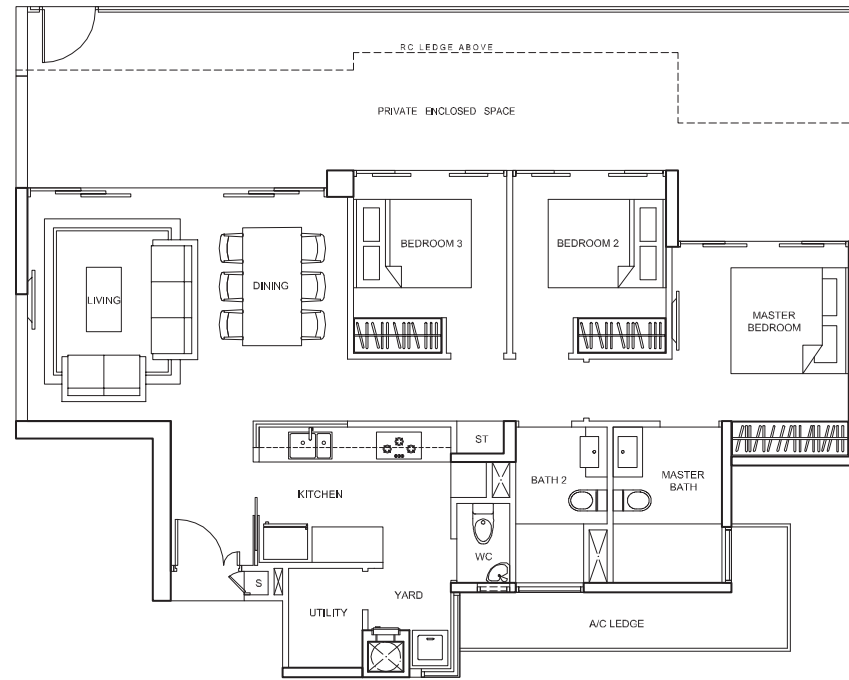


Area includes A/C ledge, balcony, PES, private roof terrace and void (where applicable). Orientations and facings will differ depending on the unit you are purchasing. Please refer to the key plan. All plans are not to scale and are subject to changes as may be approved by the relevant authorities. All floor areas are estimates and are subject to final survey.

Area includes A/C ledge, balcony, PES, private roof terrace and void (where applicable). Orientations and facings will differ depending on the unit you are purchasing. Please refer to the key plan. All plans are not to scale and are subject to changes as may be approved by the relevant authorities. All floor areas are estimates and are subject to final survey.

3-BEDROOM PREMIUM

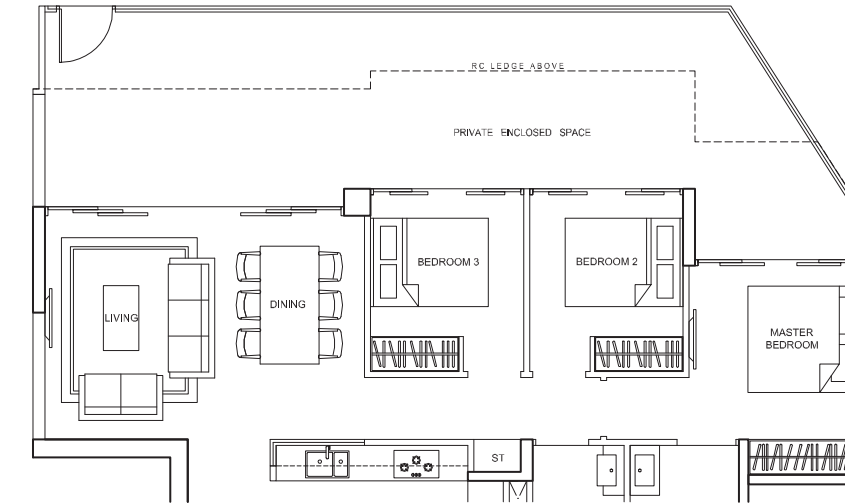
3-BEDROOM PREMIUM



TYPE C2P1

Area : 140 sq.m

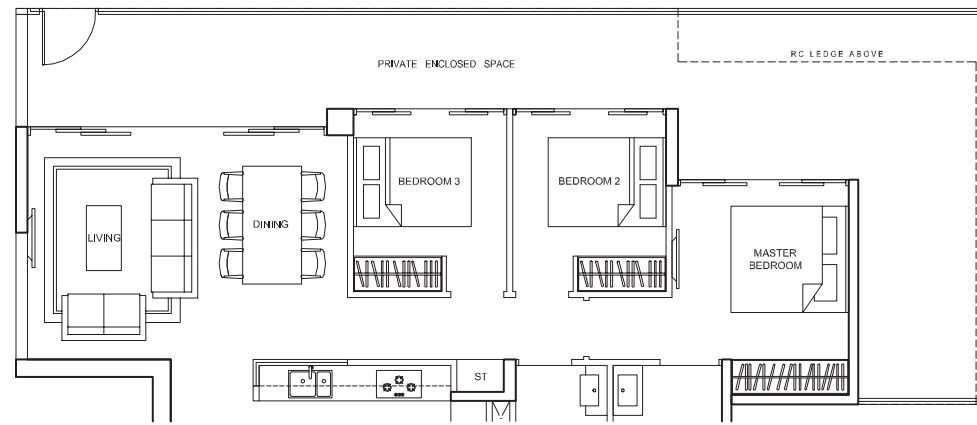
Unit(s) : #01-10 (mirror image)
#01-11
#01-23



TYPE C2P3

Area : 139 sq.m

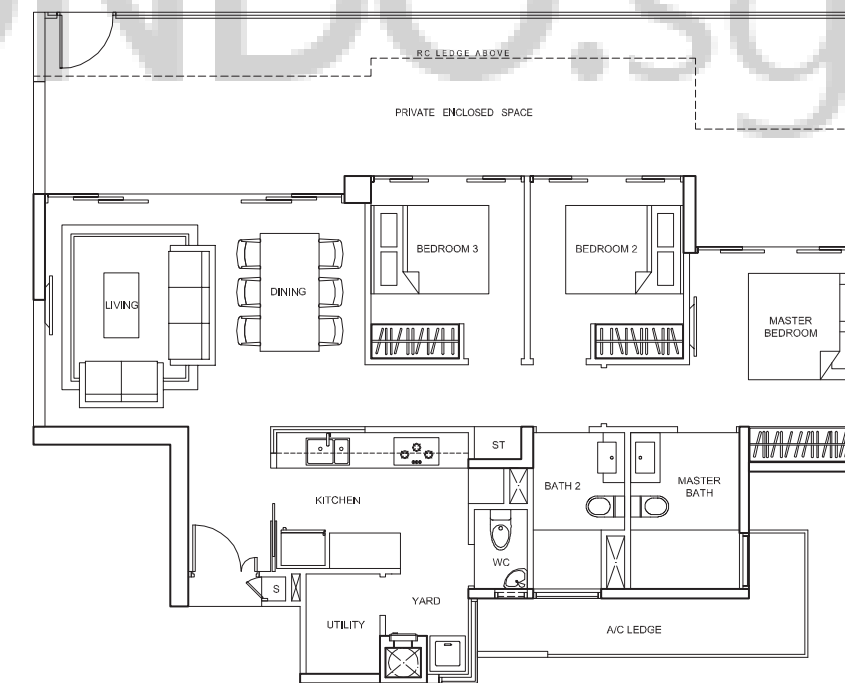
Unit : #01-03



TYPE C2P2

Area : 140 sq.m

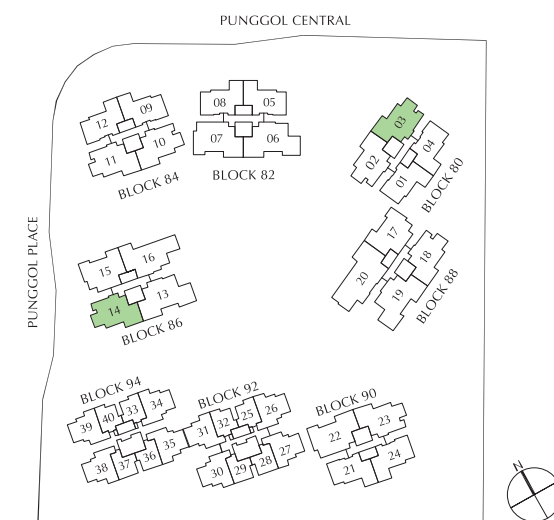
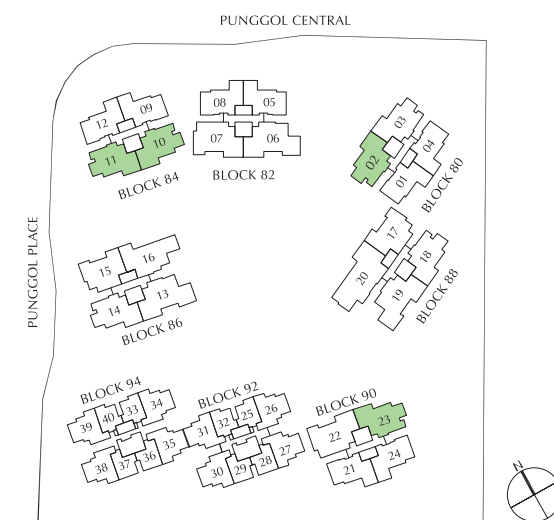
Unit : #01-02 (mirror image)



TYPE C2P4

Area : 140 sq.m

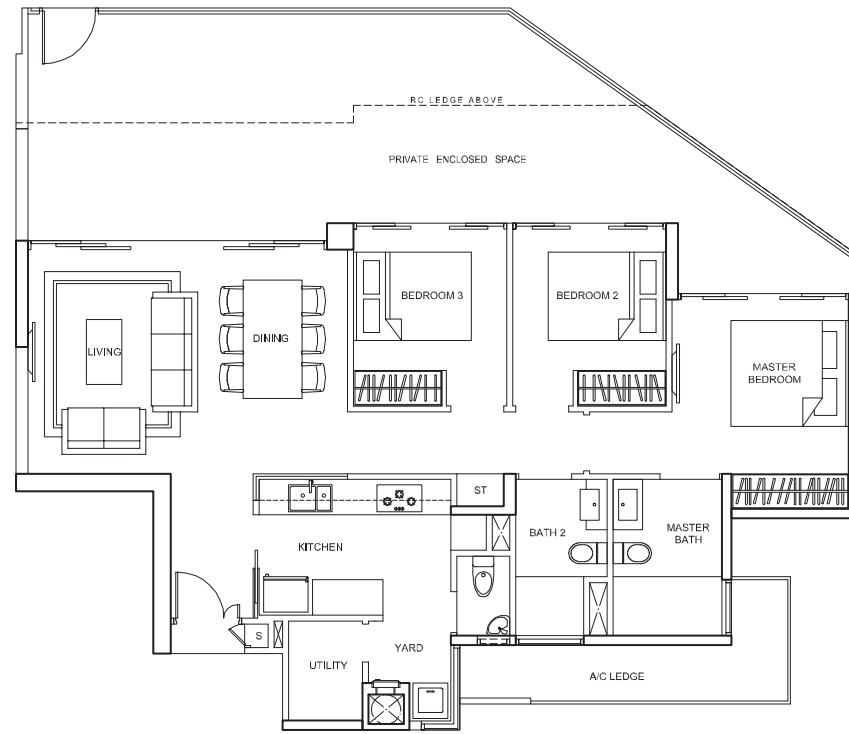
Unit : #01-14



Area includes A/C ledge, balcony, PES, private roof terrace and void (where applicable). Orientations and facings will differ depending on the unit you are purchasing. Please refer to the key plan. All plans are not to scale and are subject to changes as may be approved by the relevant authorities. All floor areas are estimates and are subject to final survey.

Area includes A/C ledge, balcony, PES, private roof terrace and void (where applicable). Orientations and facings will differ depending on the unit you are purchasing. Please refer to the key plan. All plans are not to scale and are subject to changes as may be approved by the relevant authorities. All floor areas are estimates and are subject to final survey.

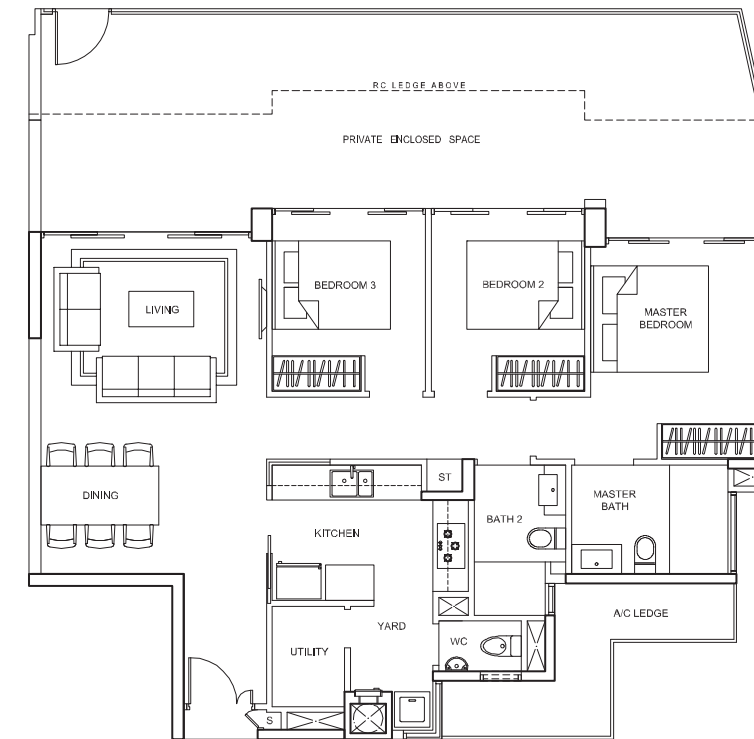
3-BEDROOM PREMIUM



TYPE C2P5

Area : 139 sq.m
Unit : #01-18 (mirror image)

3-BEDROOM PREMIUM



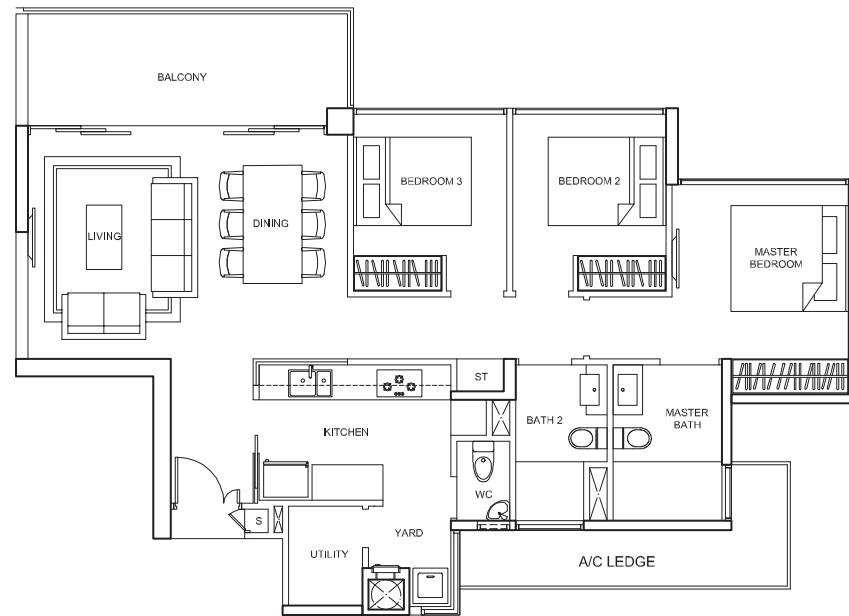
TYPE C3P1

Area : 140 sq.m
Unit : #01-15 (mirror image)



TYPE C3P2

Area : 140 sq.m
Unit : #01-17

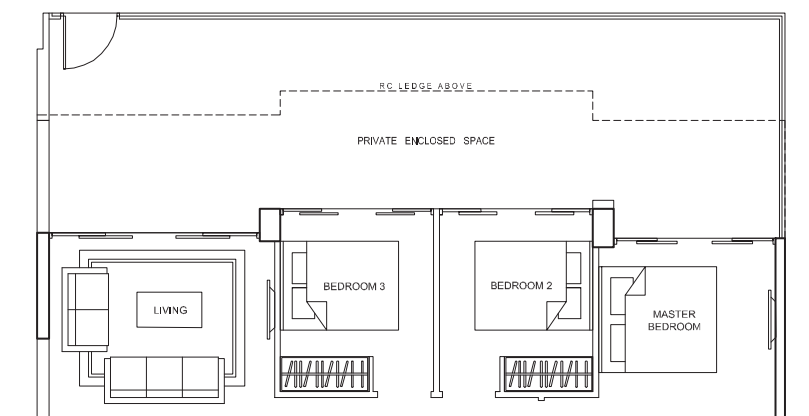
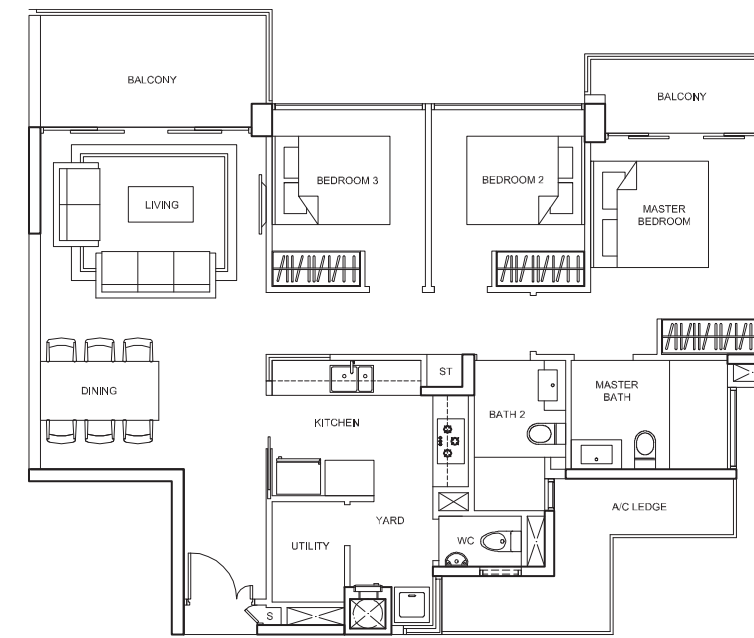


TYPE C2

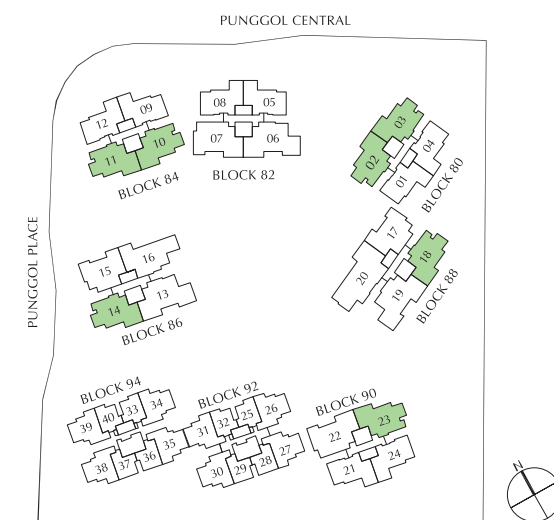
Area : 106 sq.m
Unit(s) : #02-02 to #15-02 (mirror image)
#02-03 to #15-03
#02-10 to #15-10 (mirror image)
#02-11 to #15-11
#02-14 to #15-14
#02-18 to #15-18 (mirror image)
#02-23 to #15-23

TYPE C3

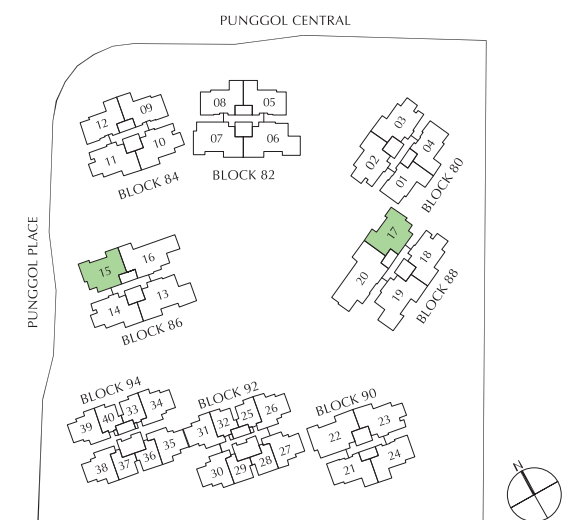
Area : 108 sq.m
Unit(s) : #02-15 to #15-15 (mirror image)
#02-17 to #15-17



Area includes A/C ledge, balcony, PES, private roof terrace and void (where applicable). Orientations and facings will differ depending on the unit you are purchasing. Please refer to the key plan. All plans are not to scale and are subject to changes as may be approved by the relevant authorities. All floor areas are estimates and are subject to final survey.

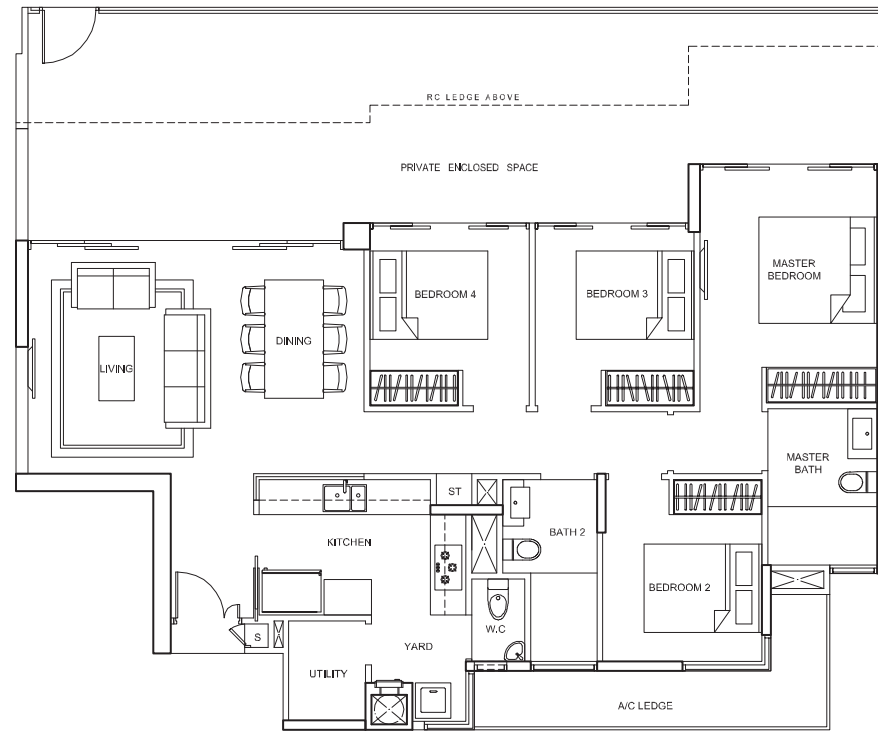


Area includes A/C ledge, balcony, PES, private roof terrace and void (where applicable). Orientations and facings will differ depending on the unit you are purchasing. Please refer to the key plan. All plans are not to scale and are subject to changes as may be approved by the relevant authorities. All floor areas are estimates and are subject to final survey.



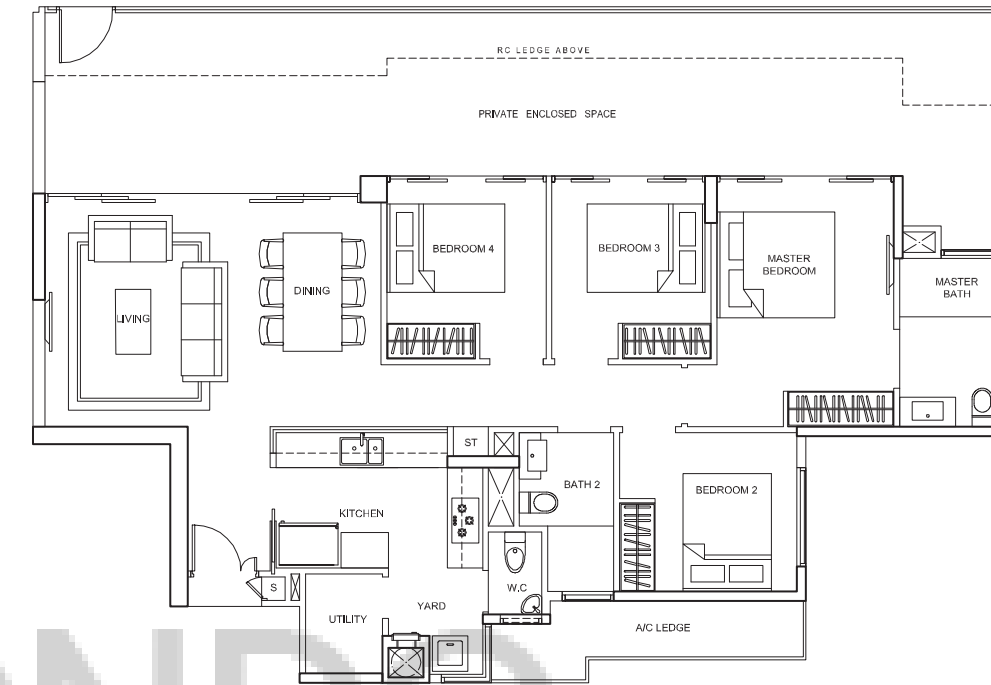
4-BEDROOM

4-BEDROOM



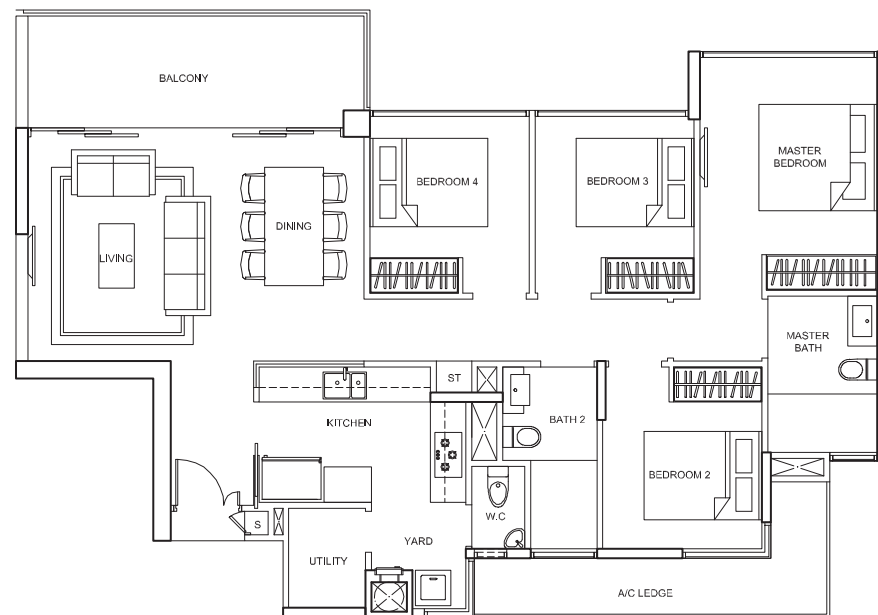
TYPE DIP

Area : 162 sq.m
Unit(s) : #01-07
#01-22 (mirror image)



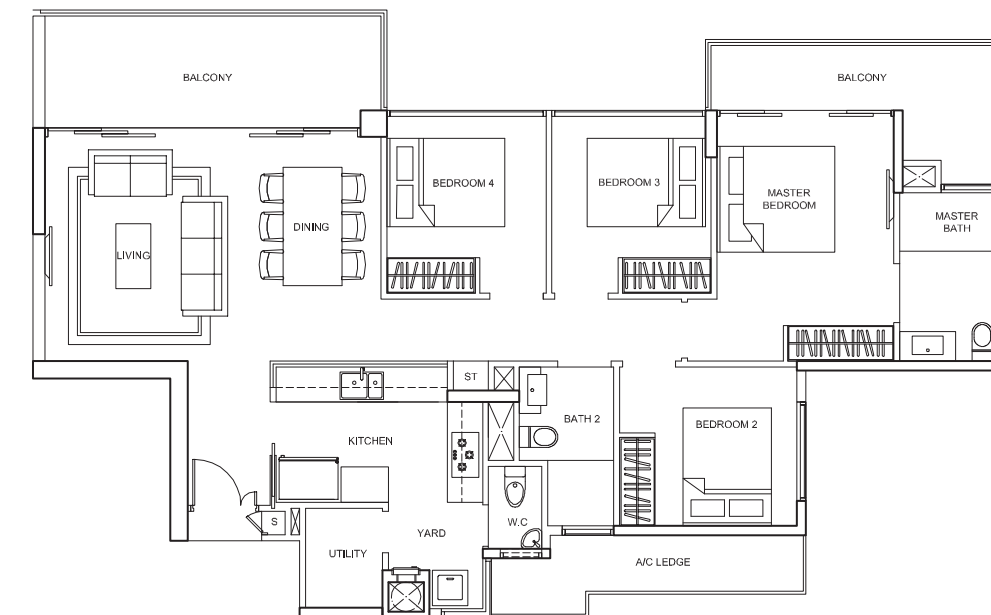
TYPE D2P

Area : 159 sq.m
Unit(s) : #01-06 (mirror image)
#01-13 (mirror image)
#01-19



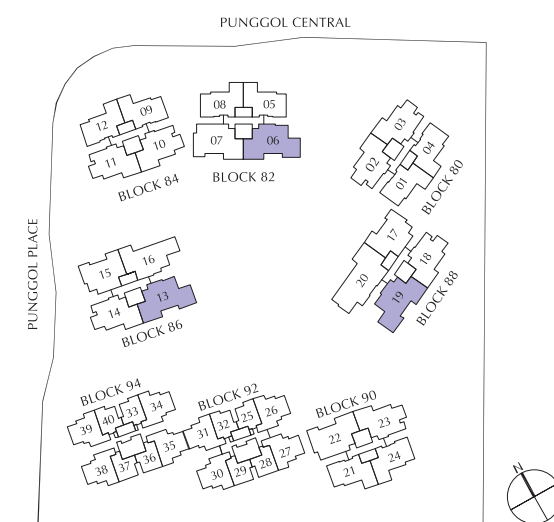
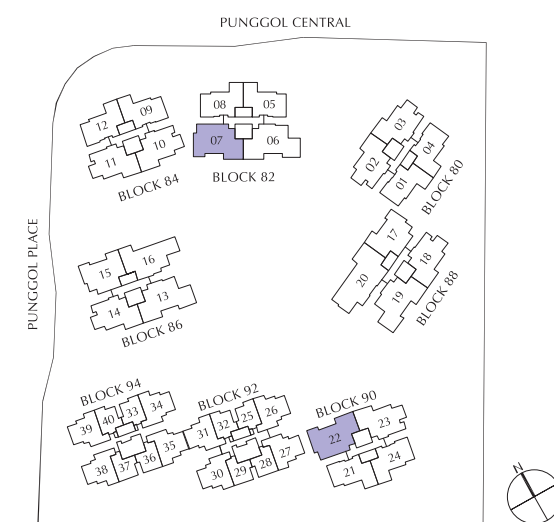
TYPE D1

Area : 122 sq.m
Unit(s) : #02-07 to #15-07
#02-22 to #15-22 (mirror image)



TYPE D2

Area : 128 sq.m
Unit(s) : #02-06 to #15-06 (mirror image)
#02-13 to #15-13 (mirror image)
#02-19 to #15-19

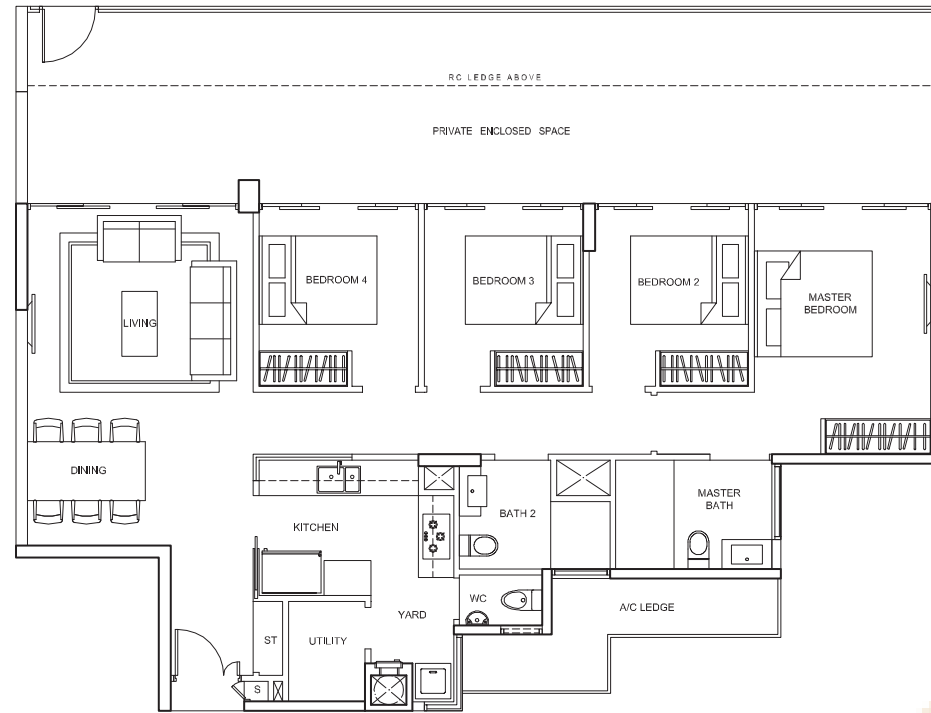


Area includes A/C ledge, balcony, PES, private roof terrace and void (where applicable). Orientations and facings will differ depending on the unit you are purchasing. Please refer to the key plan. All plans are not to scale and are subject to changes as may be approved by the relevant authorities. All floor areas are estimates and are subject to final survey.

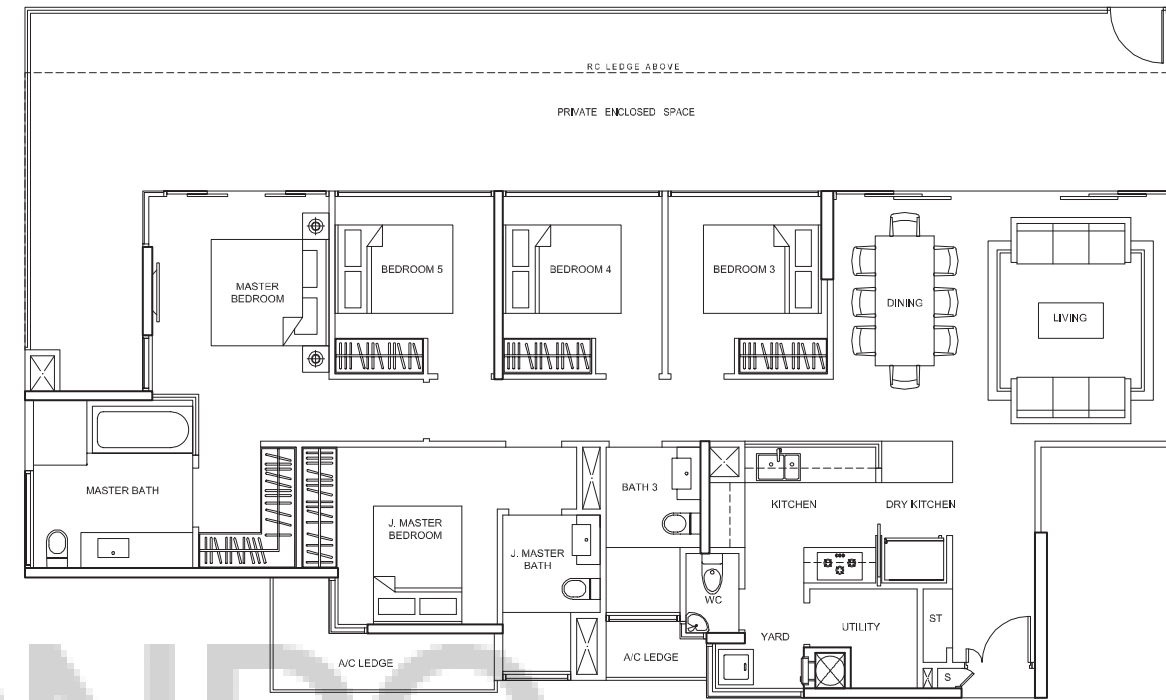
Area includes A/C ledge, balcony, PES, private roof terrace and void (where applicable). Orientations and facings will differ depending on the unit you are purchasing. Please refer to the key plan. All plans are not to scale and are subject to changes as may be approved by the relevant authorities. All floor areas are estimates and are subject to final survey.

4-BEDROOM

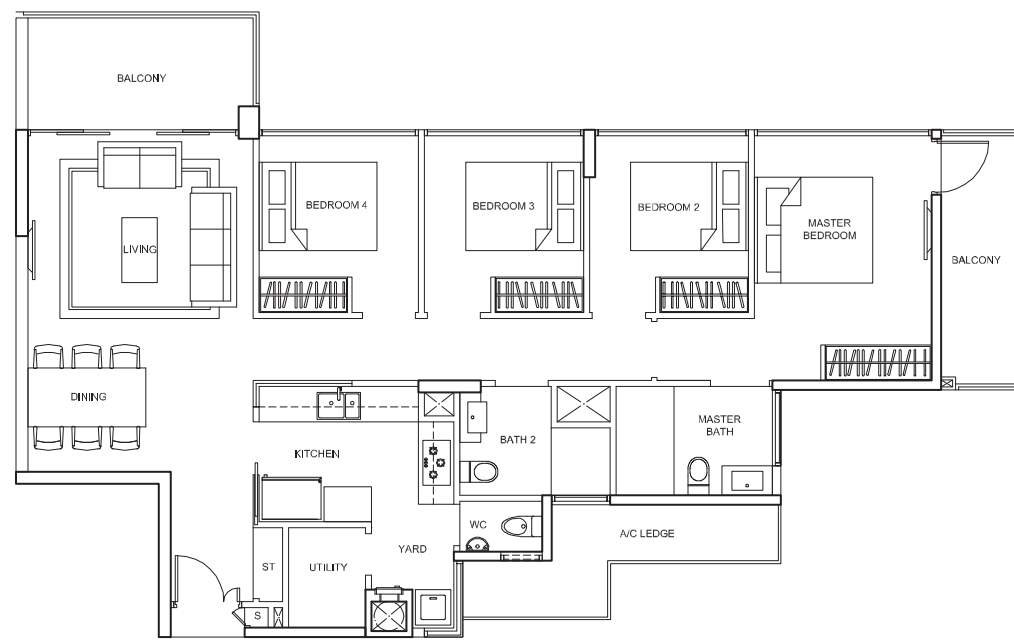
5-BEDROOM



TYPE D3P
 Area : 162 sq.m
 Unit : #01-16



TYPE E1P
 Area : 207 sq.m
 Unit : #01-20

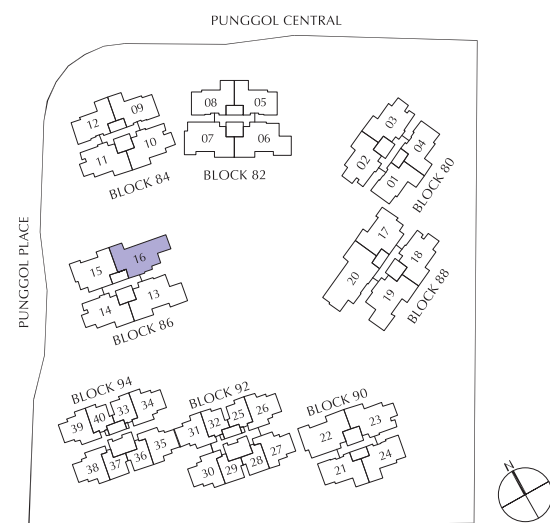


TYPE D3
 Area : 125 sq.m
 Unit(s) : #02-16 to #15-16

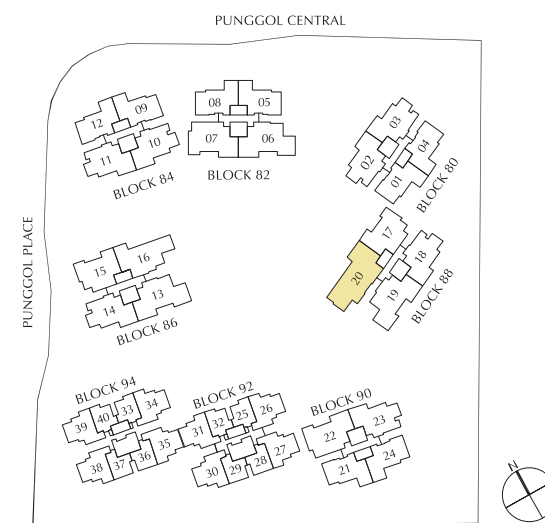


TYPE E1
 Area : 156 sq.m
 Unit(s) : #02-20 to #15-20

Area includes A/C ledge, balcony, PES, private roof terrace and void (where applicable). Orientations and facings will differ depending on the unit you are purchasing. Please refer to the key plan. All plans are not to scale and are subject to changes as may be approved by the relevant authorities. All floor areas are estimates and are subject to final survey.

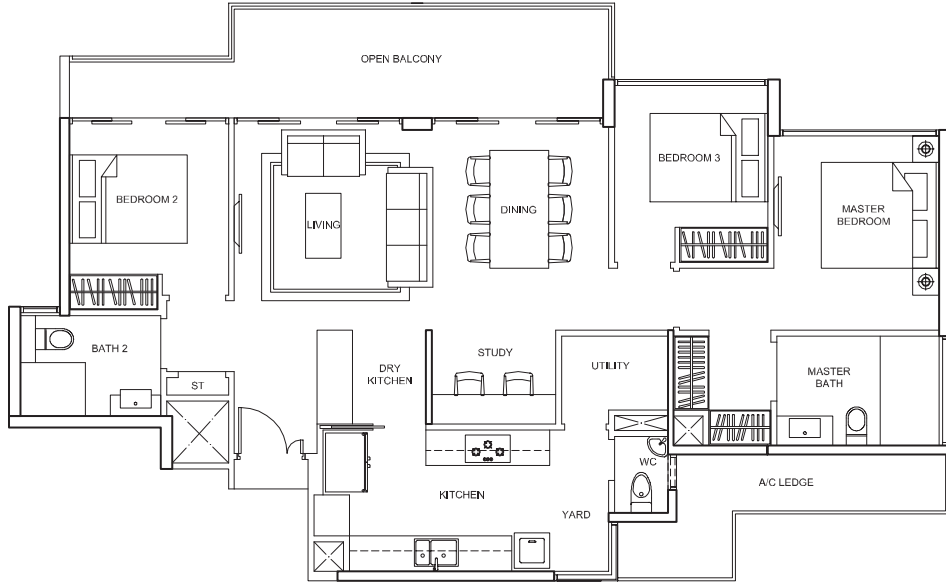


Area includes A/C ledge, balcony, PES, private roof terrace and void (where applicable). Orientations and facings will differ depending on the unit you are purchasing. Please refer to the key plan. All plans are not to scale and are subject to changes as may be approved by the relevant authorities. All floor areas are estimates and are subject to final survey.

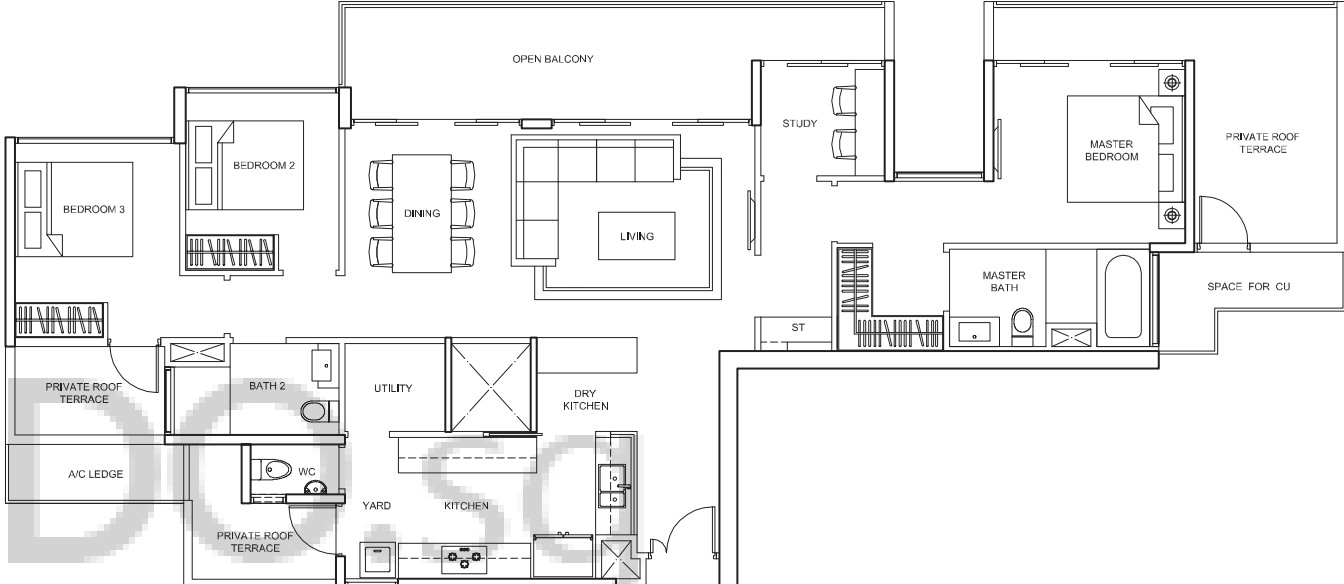


PENTHOUSE 3-BEDROOM + STUDY

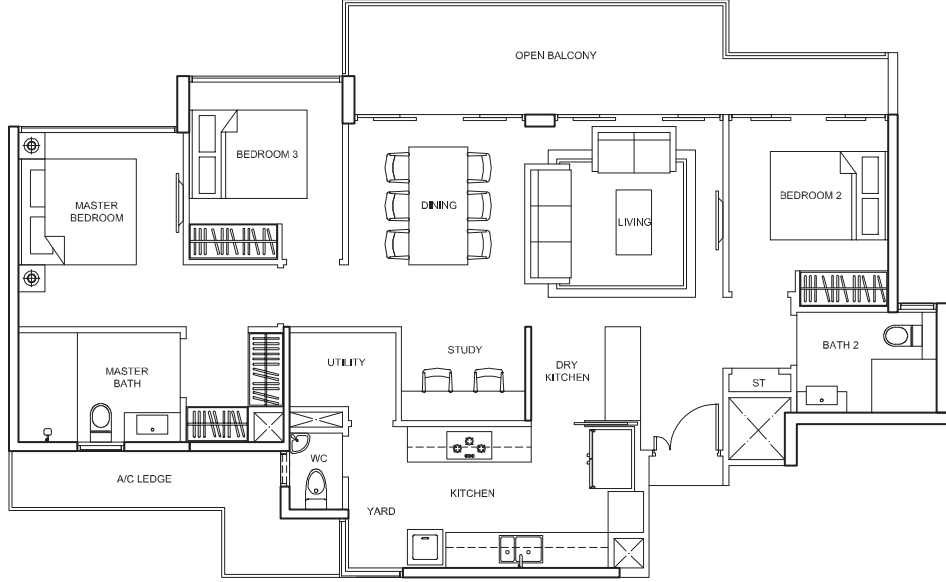
PENTHOUSE 3-BEDROOM + STUDY



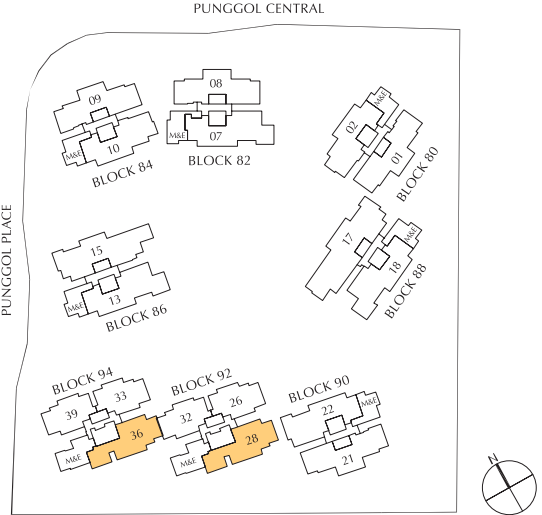
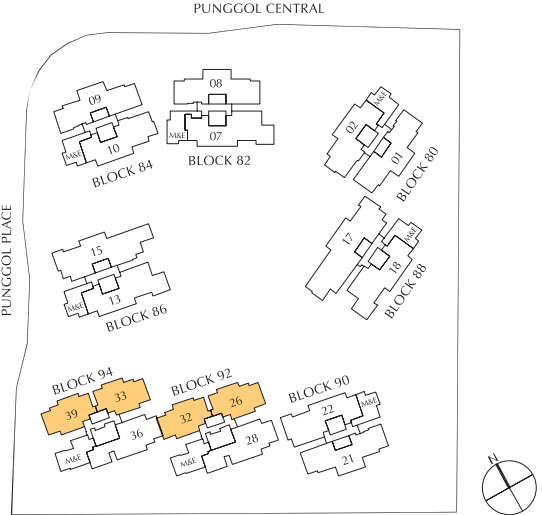
TYPE PH1a
 Area : 120 sq.m
 Unit(s) : #16-26
 #16-33
 #16-39 (mirror image)



TYPE PH2
 Area : 159 sq.m
 Unit(s) : #16-28
 #16-36



TYPE PH1b
 Area : 120 sq.m
 Unit : #16-32

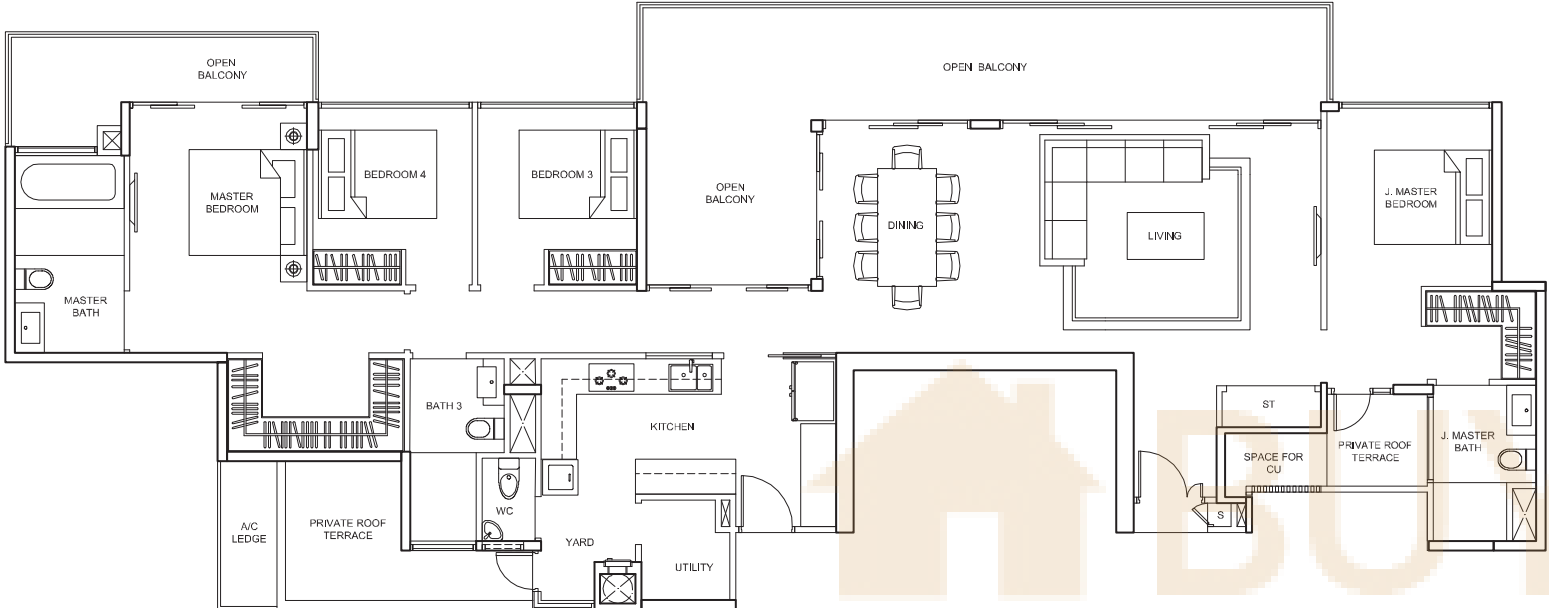


Area includes A/C ledge, balcony, PES, private roof terrace and void (where applicable). Orientations and facings will differ depending on the unit you are purchasing. Please refer to the key plan. All plans are not to scale and are subject to changes as may be approved by the relevant authorities. All floor areas are estimates and are subject to final survey.

Area includes A/C ledge, balcony, PES, private roof terrace and void (where applicable). Orientations and facings will differ depending on the unit you are purchasing. Please refer to the key plan. All plans are not to scale and are subject to changes as may be approved by the relevant authorities. All floor areas are estimates and are subject to final survey.

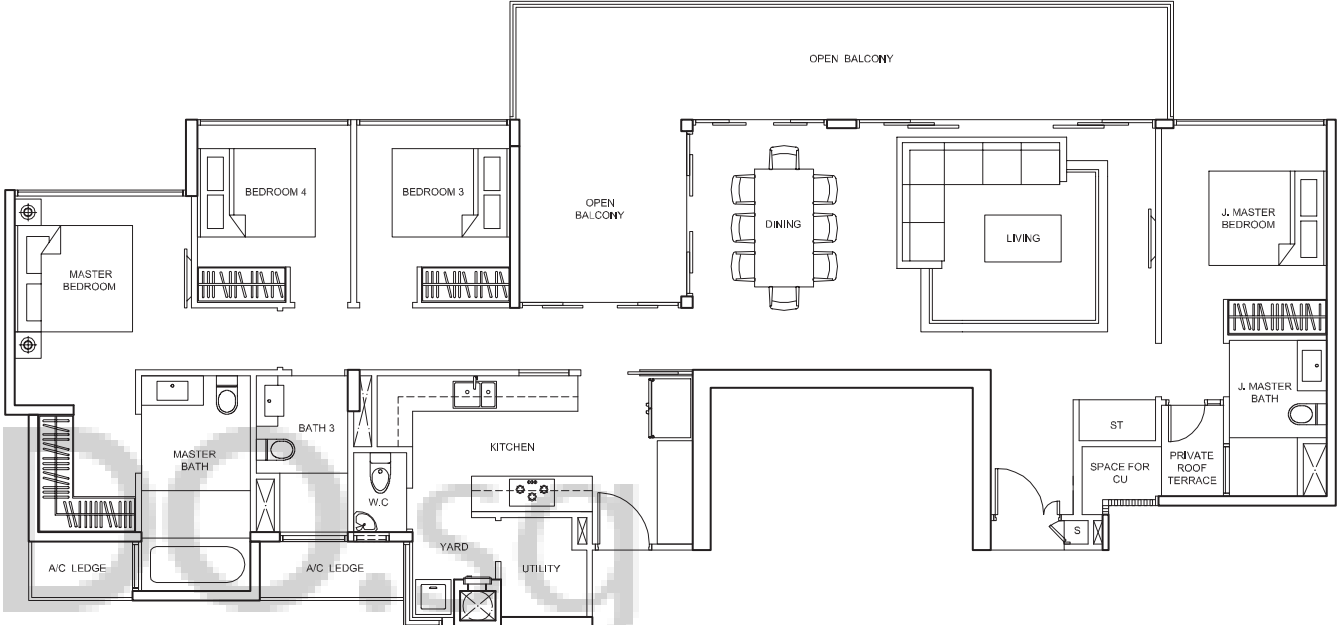
PENTHOUSE 4-BEDROOM

PENTHOUSE 4-BEDROOM



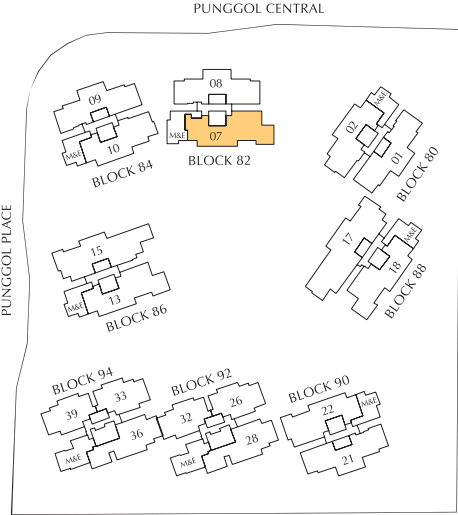
TYPE PH3

Area : 196 sq.m
Unit : #16-07

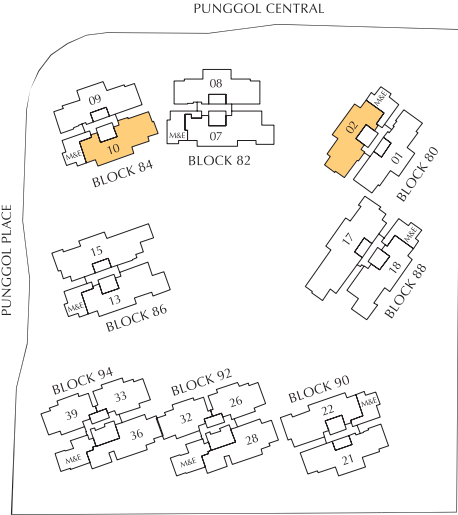


TYPE PH4

Area : 172 sq.m
Unit(s) : #16-02
#16-10



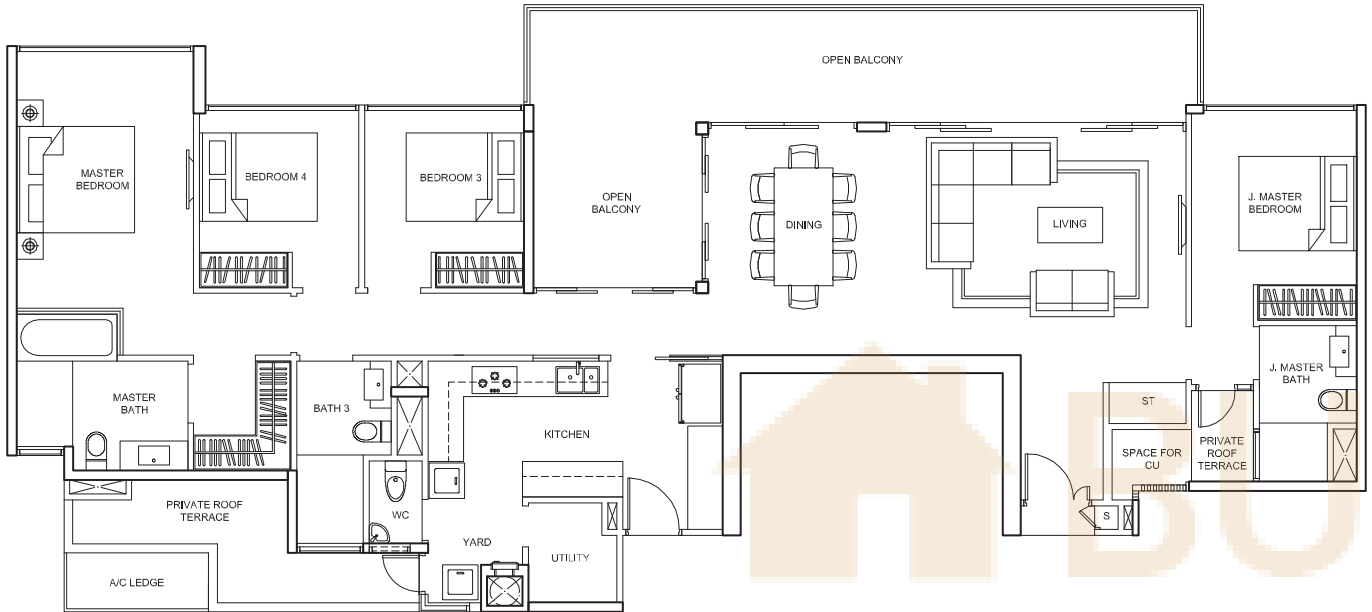
Area includes A/C ledge, balcony, PES, private roof terrace and void (where applicable). Orientations and facings will differ depending on the unit you are purchasing. Please refer to the key plan. All plans are not to scale and are subject to changes as may be approved by the relevant authorities. All floor areas are estimates and are subject to final survey.



Area includes A/C ledge, balcony, PES, private roof terrace and void (where applicable). Orientations and facings will differ depending on the unit you are purchasing. Please refer to the key plan. All plans are not to scale and are subject to changes as may be approved by the relevant authorities. All floor areas are estimates and are subject to final survey.

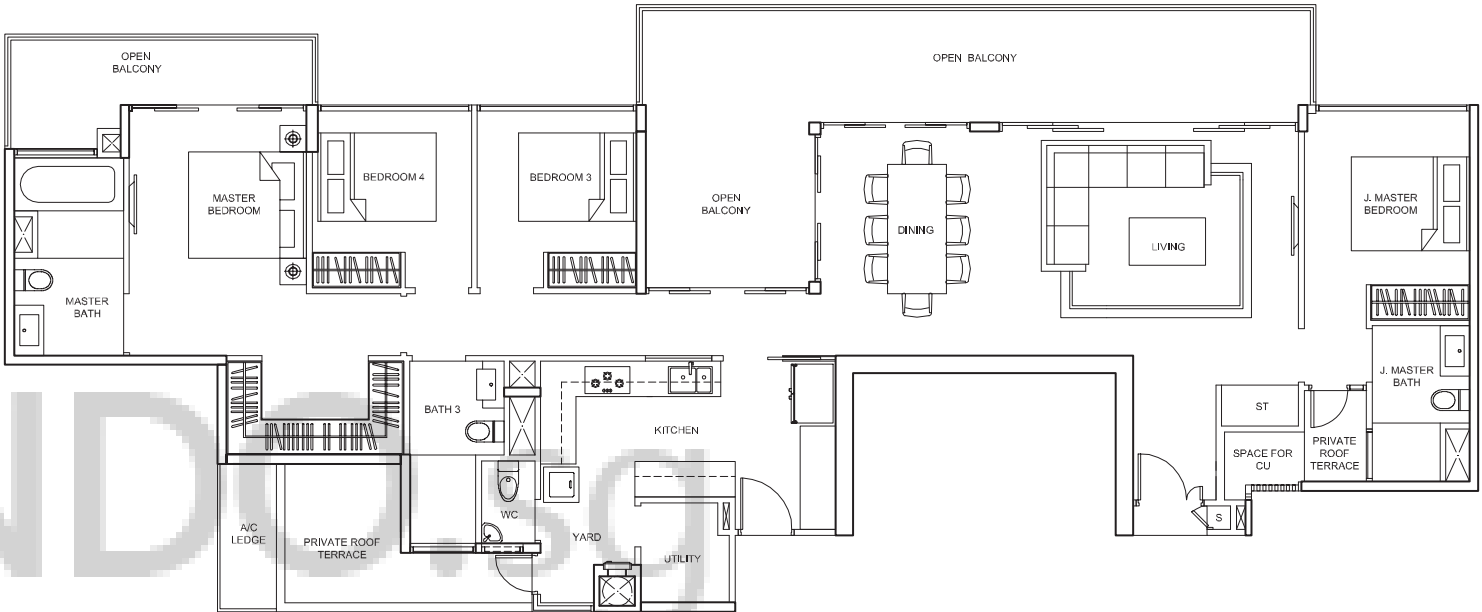
PENTHOUSE 4-BEDROOM

PENTHOUSE 4-BEDROOM



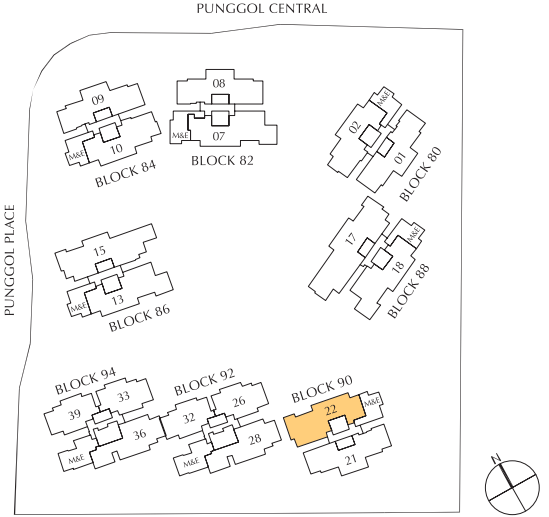
TYPE PH5

Area : 181 sq.m
 Unit : #16-22

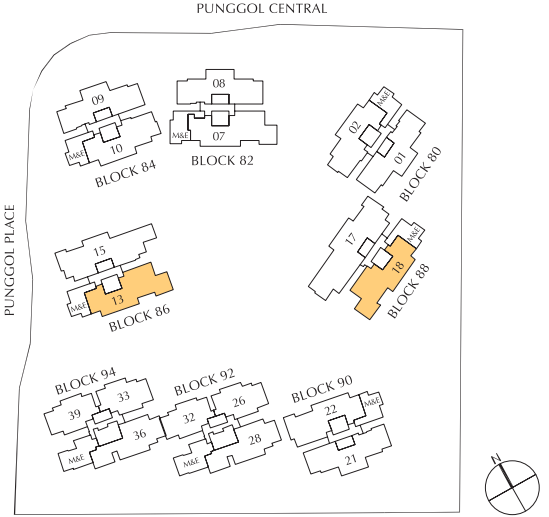


TYPE PH6

Area : 188 sq.m
 Unit(s) : #16-13
 #16-18 (mirror image)



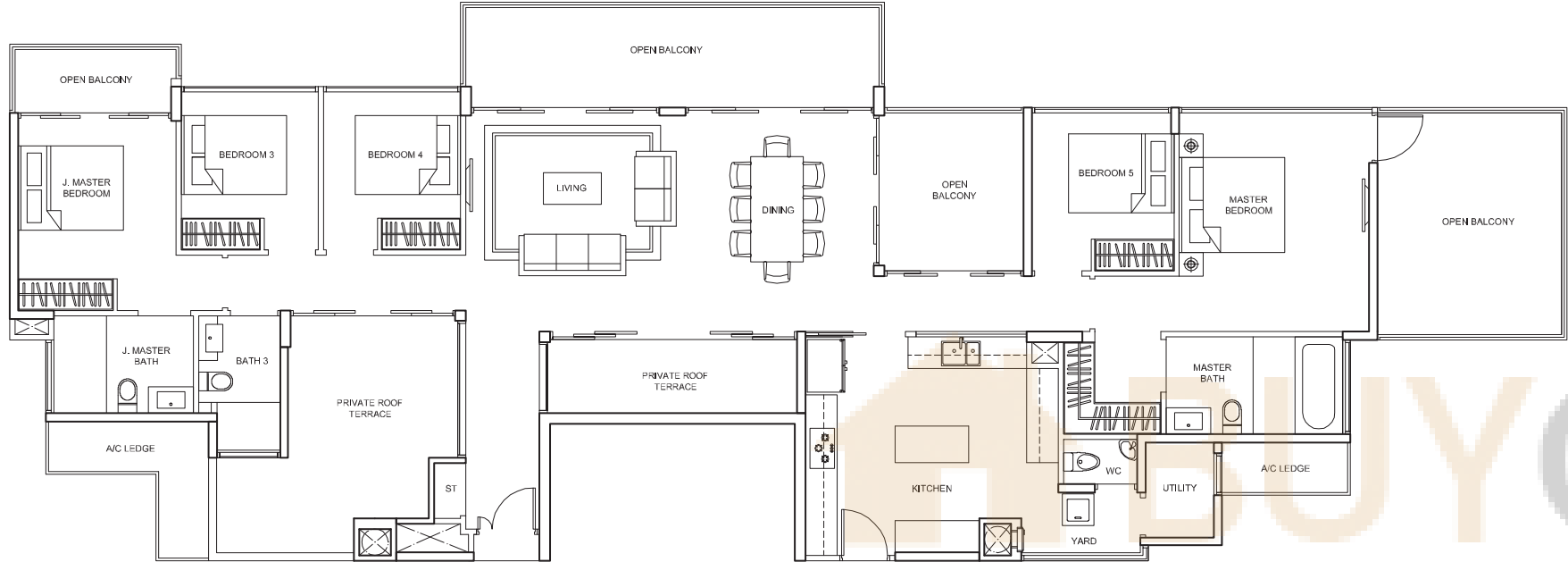
Area includes A/C ledge, balcony, PES, private roof terrace and void (where applicable). Orientations and facings will differ depending on the unit you are purchasing. Please refer to the key plan. All plans are not to scale and are subject to changes as may be approved by the relevant authorities. All floor areas are estimates and are subject to final survey.



Area includes A/C ledge, balcony, PES, private roof terrace and void (where applicable). Orientations and facings will differ depending on the unit you are purchasing. Please refer to the key plan. All plans are not to scale and are subject to changes as may be approved by the relevant authorities. All floor areas are estimates and are subject to final survey.

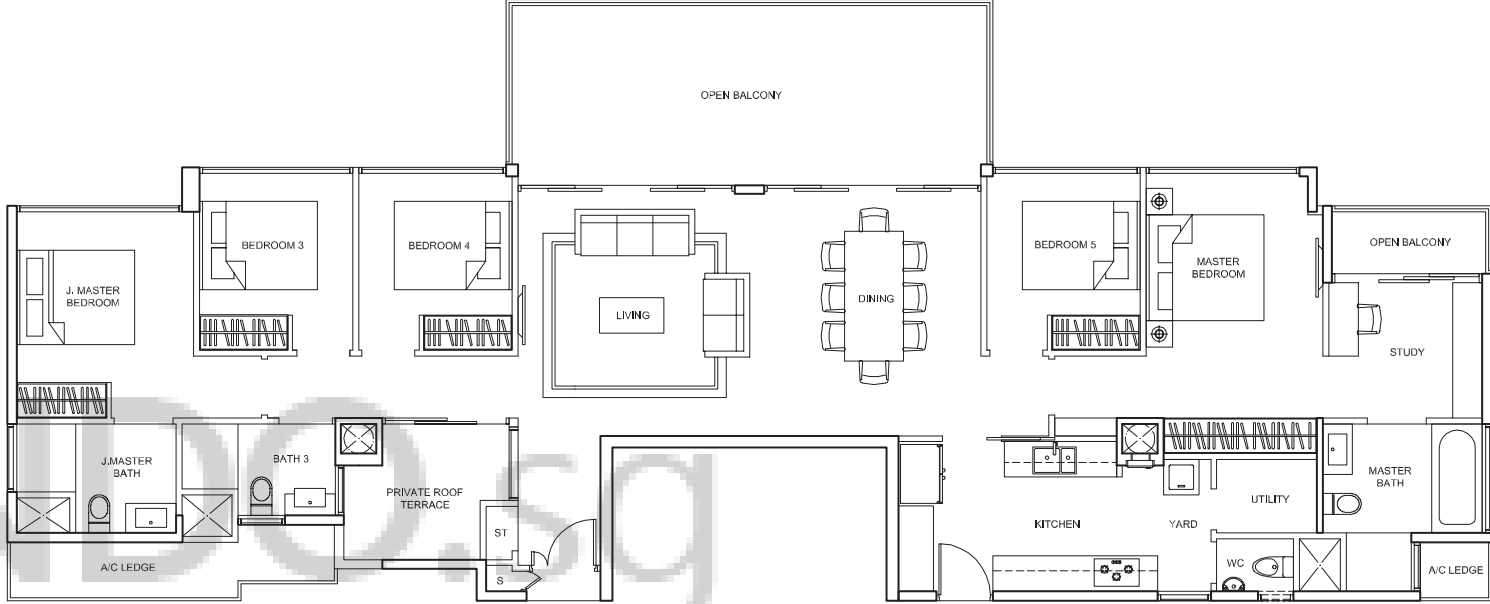
PENTHOUSE 5-BEDROOM

PENTHOUSE 5-BEDROOM + STUDY



TYPE PH7

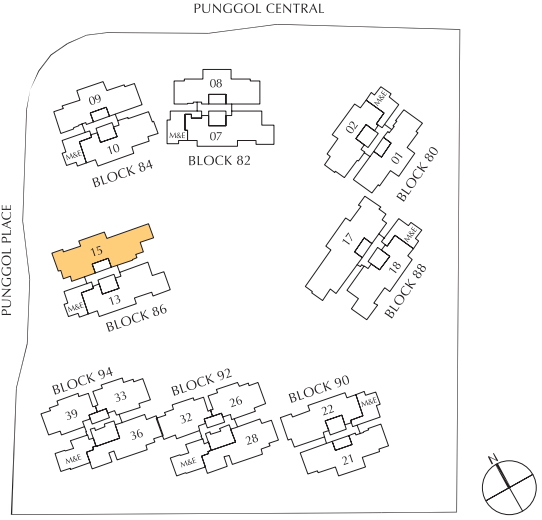
Area : 232 sq.m
 Unit : #16-15



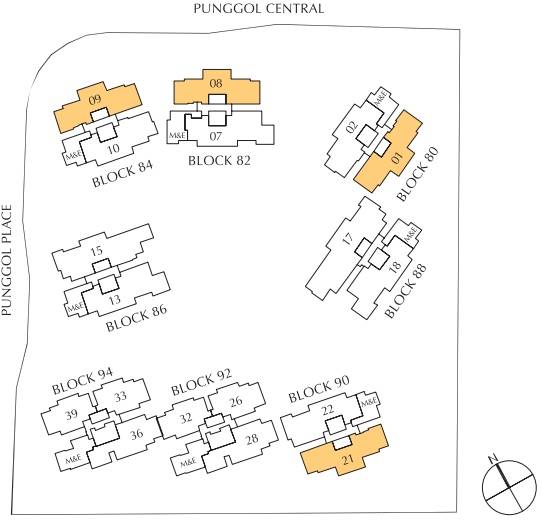
TYPE PH8

Area : 185 sq.m
 Unit(s) : #16-01
 #16-08
 #16-09
 #16-21

Area includes A/C ledge, balcony, PES, private roof terrace and void (where applicable). Orientations and facings will differ depending on the unit you are purchasing. Please refer to the key plan. All plans are not to scale and are subject to changes as may be approved by the relevant authorities. All floor areas are estimates and are subject to final survey.

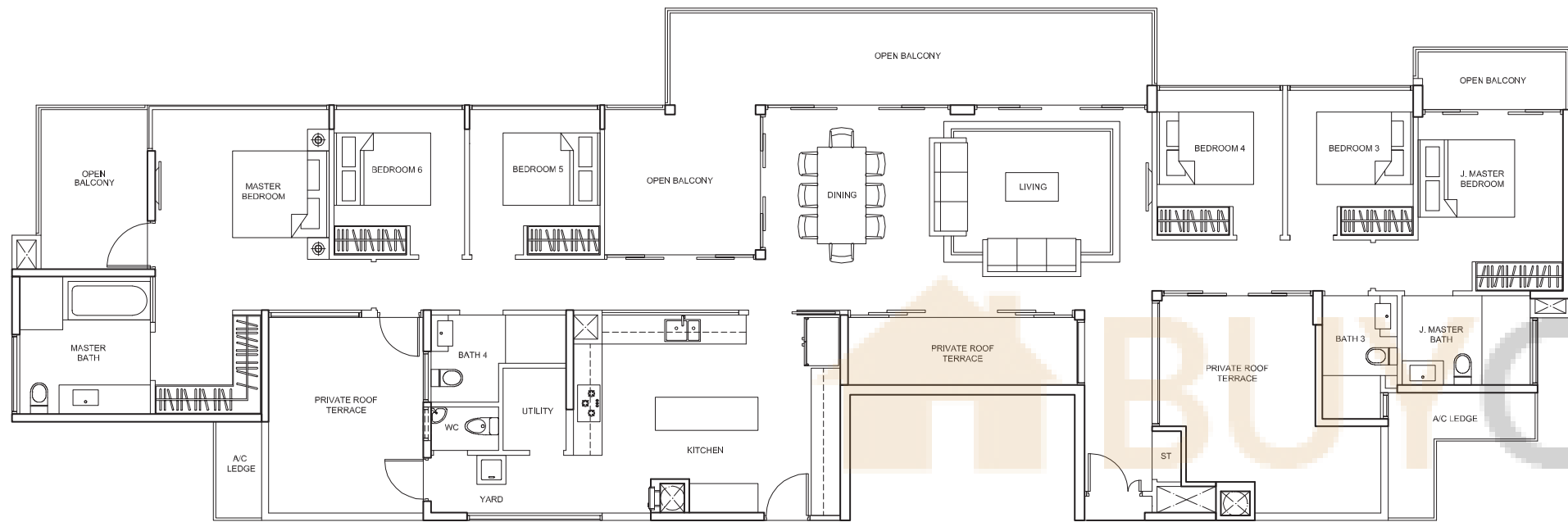


Area includes A/C ledge, balcony, PES, private roof terrace and void (where applicable). Orientations and facings will differ depending on the unit you are purchasing. Please refer to the key plan. All plans are not to scale and are subject to changes as may be approved by the relevant authorities. All floor areas are estimates and are subject to final survey.



PENTHOUSE 6-BEDROOM

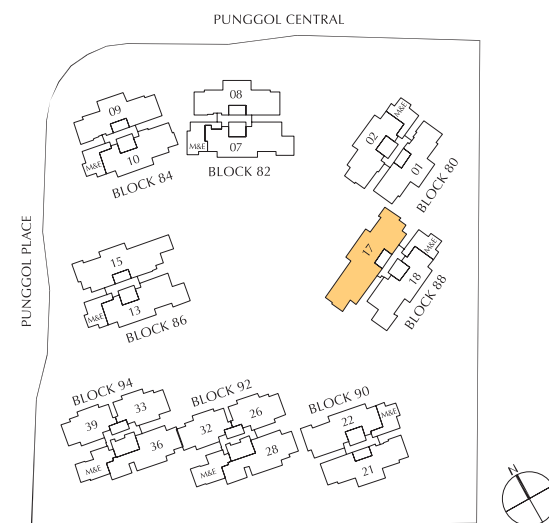
SPECIFICATIONS



TYPE PH9

Area : 270 sq.m
Unit : #16-17

Area includes A/C ledge, balcony, PES, private roof terrace and void (where applicable). Orientations and facings will differ depending on the unit you are purchasing. Please refer to the key plan. All plans are not to scale and are subject to changes as may be approved by the relevant authorities. All floor areas are estimates and are subject to final survey.



1) FOUNDATION

Bored piles and/or reinforced concrete piles

2) STRUCTURE

Reinforced concrete structure design in accordance with local code of practice

3) WALLS

- (a) External Walls – Concrete and/or masonry walls and/or pre-cast reinforced concrete wall
- (b) Internal Walls – Masonry wall and/or lightweight concrete panels and/or in-situ and/or pre-cast reinforced concrete wall and/or drywall partition system and/or glass partition

4) ROOF

Flat Roof – Reinforced concrete roof with approved waterproofing system and insulation

5) CEILING

- (a) Apartment Unit
 - (i) Living, Dining, Bedrooms, Study, Utility, Store, Balcony and Private Enclosed Space (PES): Skim coat with emulsion paint and/or fibrous plaster board ceiling/bulkhead with paint finish to designated areas
 - (ii) Bathrooms, Dry Kitchen, Kitchen, Corridor leading to Bedrooms, WC and Yard: Fibrous plaster board ceiling with paint finish
- (b) Common Areas
 - (i) Lift lobbies at Basement and 1st to 16th Storeys: Fibrous plaster board and/or calcium silicate and/or box-up and/or skim coat to designated area with paint finish
 - (ii) General Area: Skim coat with paint finish

6) FINISHES

- (a) Wall
 - (i) Internal
Living, Dining, Bedrooms, Study, Store, Dry Kitchen, Utility and Yard: Plaster and paint finish to exposed surfaces only
Bathrooms attached to Master Bedroom and Junior Master Bedroom: Tiles and/or marble and/or granite up to false ceiling height and on exposed surfaces only
Bathrooms, Kitchen and WC: Tiles up to false ceiling height and on exposed surfaces only
 - (ii) External
PES, Balcony, Open Balcony, and Private Roof Terrace: Paint finish on exposed surfaces only

NOTE:

- All marble, granite, tiles, cement/sand plaster, skim coat and emulsion paint are provided up to false ceiling level and at exposed areas only.
 - No tiles/marble behind/below kitchen cabinets long bath, bathroom cabinets and mirrors.
- (b) Floor
 - (i) Apartment unit – Internal
Living, Dining, Study (only for Type PH1a & PH1b), Dry Kitchen, Kitchen, Bathrooms, Yard, Utility, WC, Private Enclosed Space (PES), Balcony, Open Balcony, and Private Roof Terrace: Tiles
All Bedrooms and Study (only for Type PH2 & PH8): Timber flooring
 - (ii) Common Areas
Lift Lobbies at Basement and 1st Storey: Marble and/or granite and/or tiles

All common corridors and 2nd to 16th Storey common Lift Lobbies: Tiles
NOTE: All floor finishes are to the exposed surface areas only.

7) WINDOWS

- (a) Bedrooms, Dining, Living (where applicable): Powder coated aluminium framed casement and/or top hung and/or fixed window with tinted and/or clear float and/or tempered and/or laminated glass
- (b) Bathrooms: Powder coated aluminium framed casement and/or top hung and/or fixed window with tinted and/or clear and/or frosted glass
- (c) Kitchen (where applicable): Powder coated aluminium framed casement and/or top hung and/or fixed window and/or sliding window with tinted and/or clear float glass
- (d) WC (where applicable): Powder coated aluminium framed casement and/or top hung and/or fixed window with tinted and/or clear float glass and/or frosted glass
- (e) Yard (where applicable): Powder coated aluminium framed casement and/or top hung and/or fixed window and/or sliding window with tinted and/or clear float glass

8) DOORS

- (a) Main Entrance: Approved fire-rated timber door
 - (b) Living, Dining, Bedrooms to Private Enclosed Space (PES), Balcony, Open Balcony, Private Roof Terrace: Powder coated aluminium sliding and/or swing door with tinted and/or clear tempered and/or float glass and/or metal door
 - (c) Bedrooms, Bathrooms, Study (for Types PH2 & PH8 only): Timber swing door and/or timber sliding door
 - (d) Kitchen (except Types A & B): Timber framed clear float glass sliding and/or timber swing door
 - (e) Yard to Private Roof Terrace (for Types PH2, PH3, PH5, PH6 and PH9): Powder coated aluminium sliding and/or swing door with tinted and/or clear tempered and/or float glass and/or metal door
 - (f) WC and Utility: PVC bi-fold and/or swing door
 - (g) Private Enclosed Space (PES): Railing height metal gate
- Note: Good quality locksets and ironmongery to be provided to all doors.

9) SANITARY FITTINGS

- (a) All unit types except Types E and PH2, 3, 4, 5, 6, 7, 8, 9
Master Bath, Junior Master Bath, Common Bathrooms
 - 1 shower compartment with mixer and shower head
 - 1 floor mount water closet
 - 1 vanity top with 1 basin and mixer
 - 1 mirror
 - 1 paper holder
 - 1 towel rail
- (b) Types E and PH2, 3, 4, 5, 6, 7, 8, 9
Master Bathrooms
 - 1 long bath with mixer
 - 1 shower compartment with mixer and shower head
 - 1 floor mount water closet

- 1 vanity top with 1 basin and mixer
- 1 mirror
- 1 paper holder
- 1 towel rail

(c) All Types

- WC
 - 1 pedestal water closet
 - 1 basin with tap
 - 1 shower set with bib tap (cold inlet)
 - 1 paper holder

(d) All Types

- PES, selected Open Balcony and selected Private Roof Terrace
 - 1 Bib tap

10) ELECTRICAL INSTALLATION

- (a) All electrical wirings are concealed in floor and wall in conduits wherever possible, except for electrical wiring above false ceiling and DB cabinet will be exposed in conduits/trunking.
- (b) Refer to Electrical Schedule for details.

11) TV AND TELEPHONE POINTS

Refer to Electrical Schedule for details

12) LIGHTNING PROTECTION

Lightning protection system shall be provided in accordance with Singapore SS 555/2010

13) PAINTING

- (a) External Walls: Water based emulsion paint and/or textured coating to designated area
- (b) Internal Walls: Water based emulsion paint finish

14) WATERPROOFING

Waterproofing shall be provided to floor slabs of Bathrooms, WC, Kitchen, Yard, Balcony, Open Balcony, Private Roof Terrace, PES, Swimming Pool and Reinforced Concrete Flat Roof (where applicable).

15) DRIVEWAY AND CARPARK

- (a) Surface Driveway: Stone and/or pavers and/or tarmac and/or concrete
- (b) Basement Car Park/Driveway: Reinforced concrete slab

16) RECREATION FACILITIES

1. Meeting and Waiting Area
2. Outdoor Lobby
3. Aqua Pool
4. Water Playground
5. 50m Infinity Lap Pool
6. Sun Deck
7. Floating Deck
8. Family Pool Deck
9. Function Room
10. Gym
11. Outdoor Family Deck
12. Firefly Stream
13. Spa Pods
14. Massage Trail
15. Outdoor Cooking Pavilion
16. Island Dining
17. Swim Out Bar
18. Lazy Pool
19. Spa Pool
20. Lazy Pool Deck
21. BBQ Area
22. Outdoor Deck
23. Family Lounge
24. Adventure Playground
25. Tennis Court
26. Sensory Forest Trail