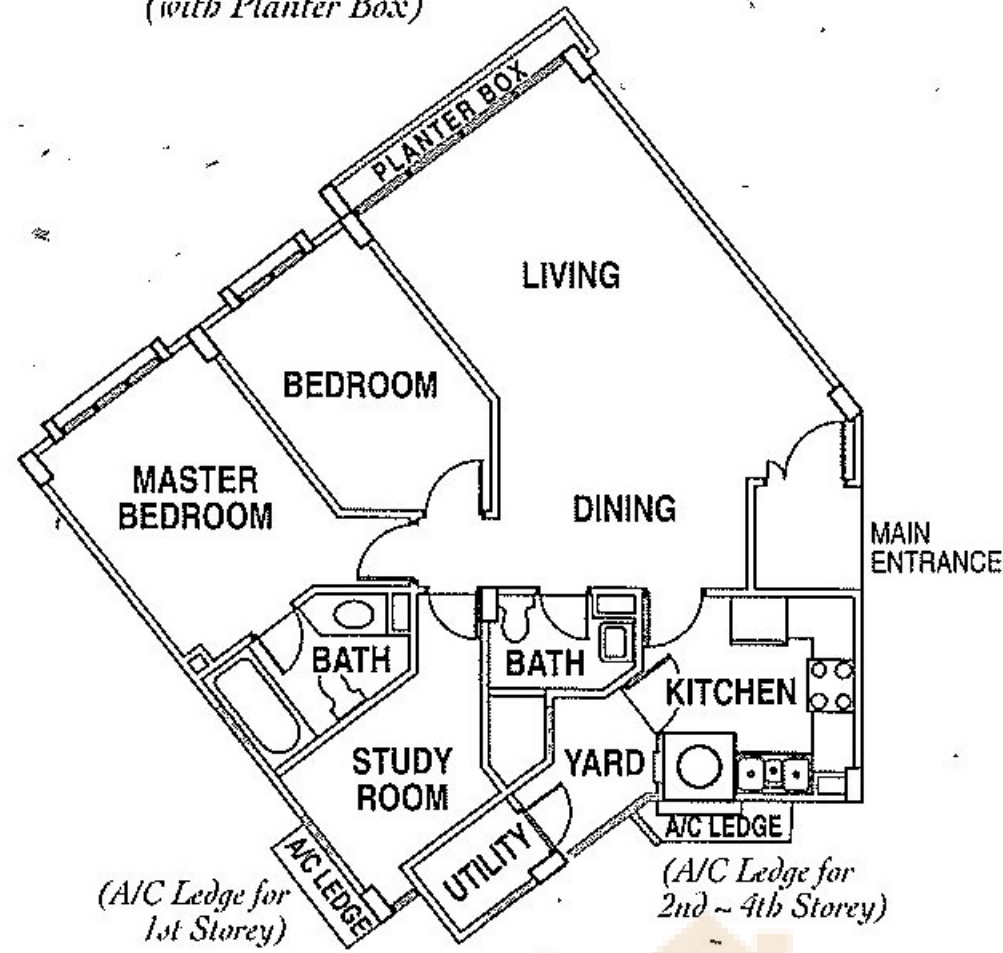


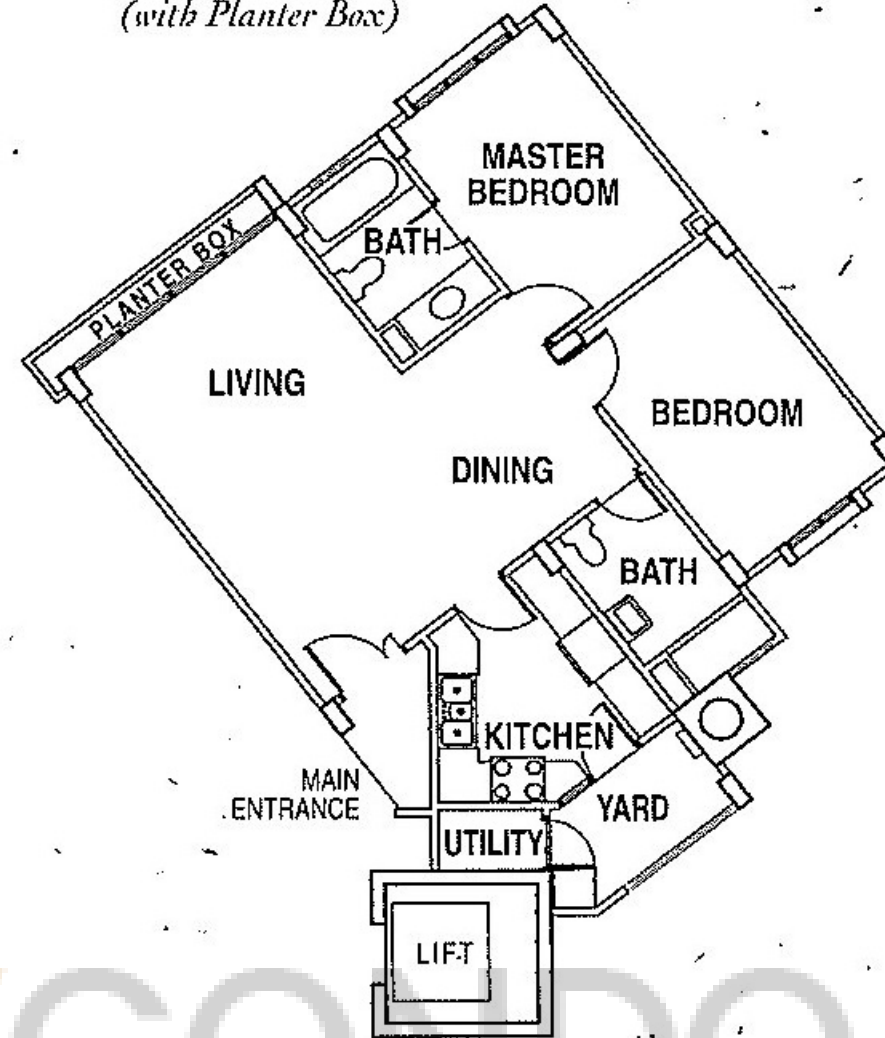
TYPE S

1st Storey • 1001 sqft (93 sqm)
 2nd ~ 4th Storey • 1023 sqft (95 sqm)
 (with Planter Box)



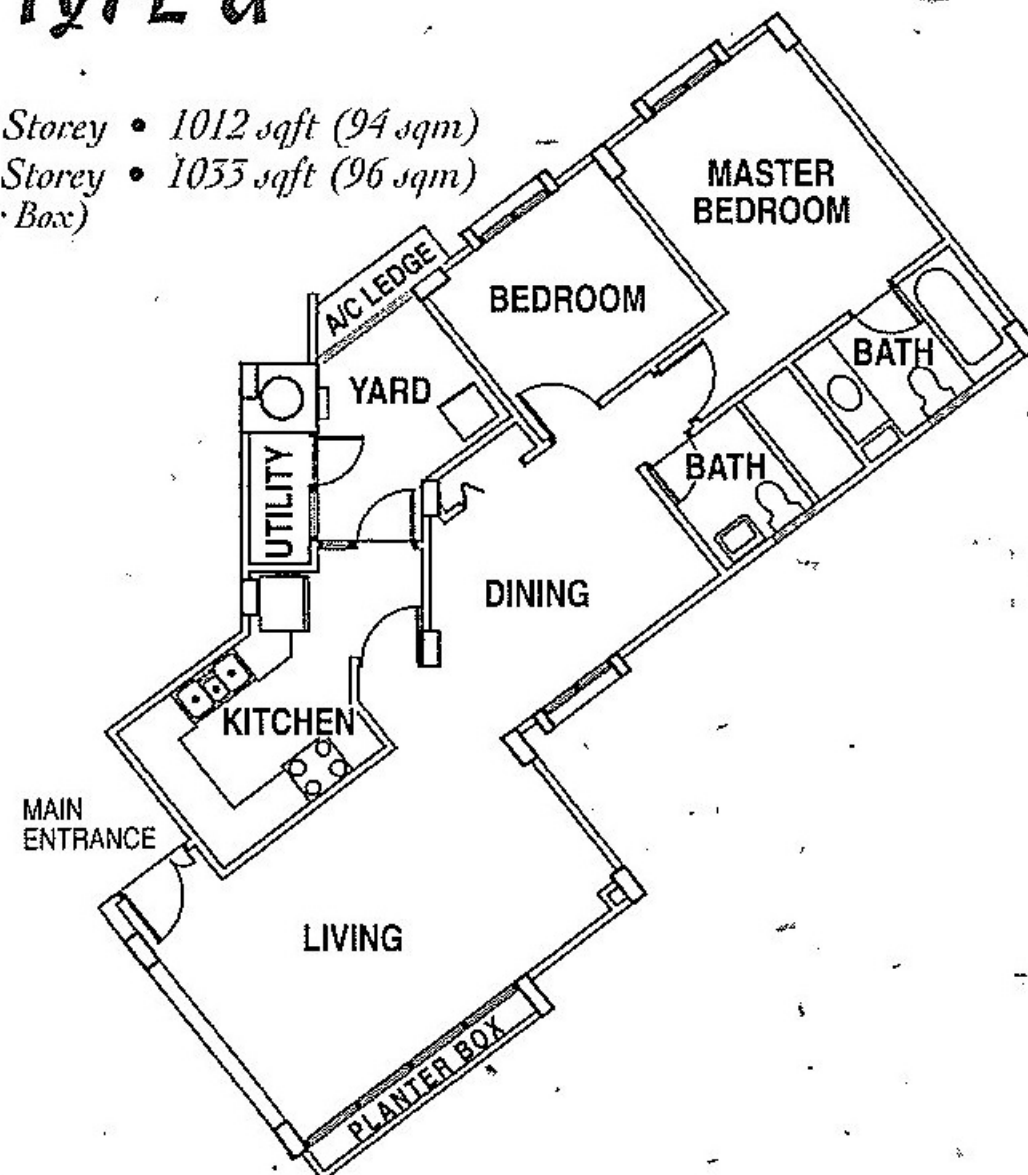
TYPE T

1st Storey • 926 sqft (86 sqm)
 2nd ~ 4th Storey • 947 sqft (88 sqm)
 (with Planter Box)



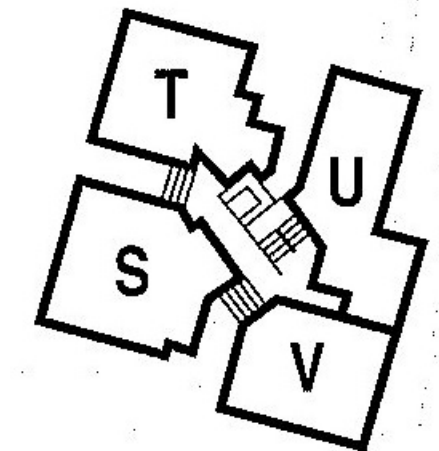
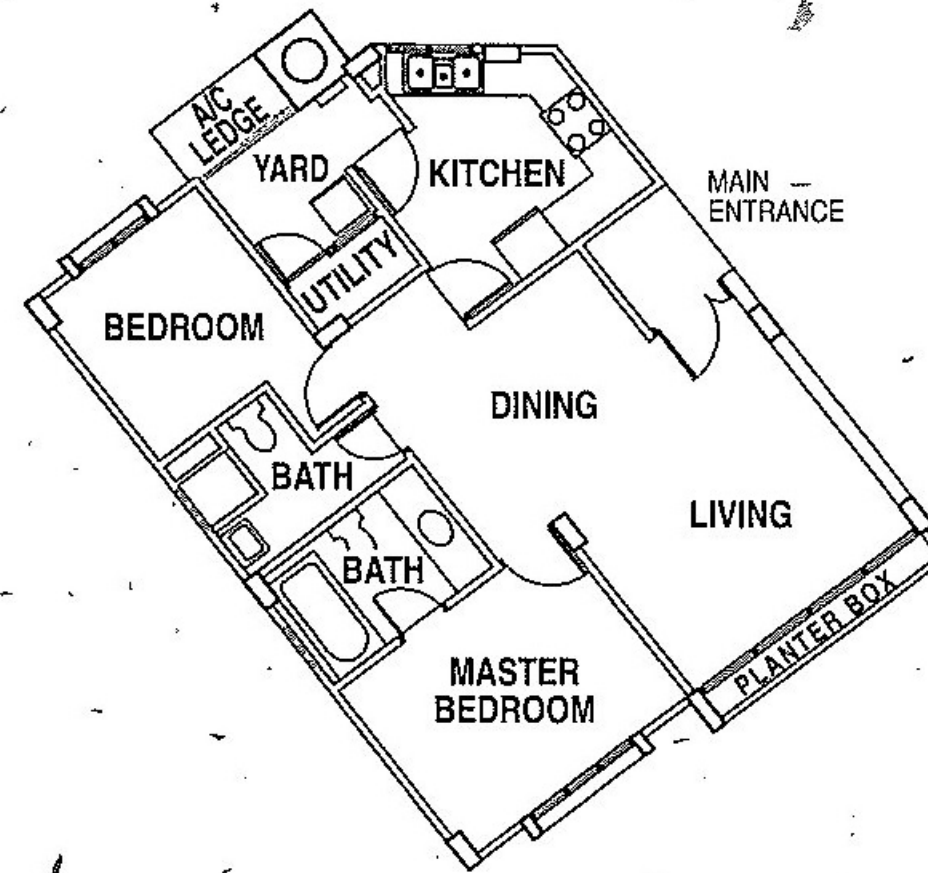
TYPE U

1st Storey • 1012 sqft (94 sqm)
 2nd ~ 4th Storey • 1033 sqft (96 sqm)
 (with Planter Box)



TYPE V

1st Storey • 850 sqft (79 sqm)
 2nd ~ 4th Storey • 872 sqft (81 sqm)
 (with Planter Box)

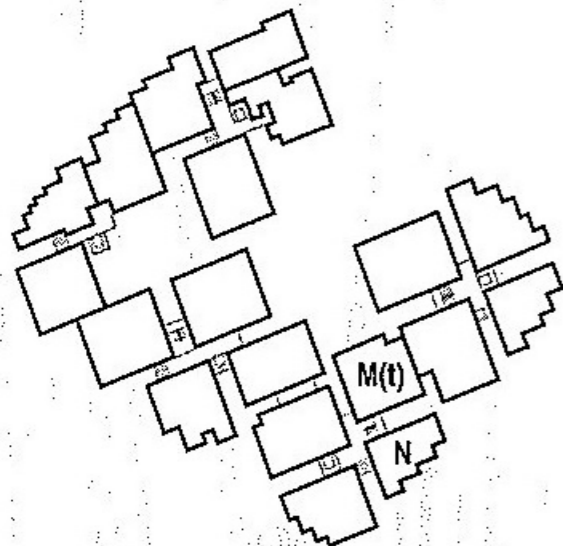


1ST ~ 4TH STOREY

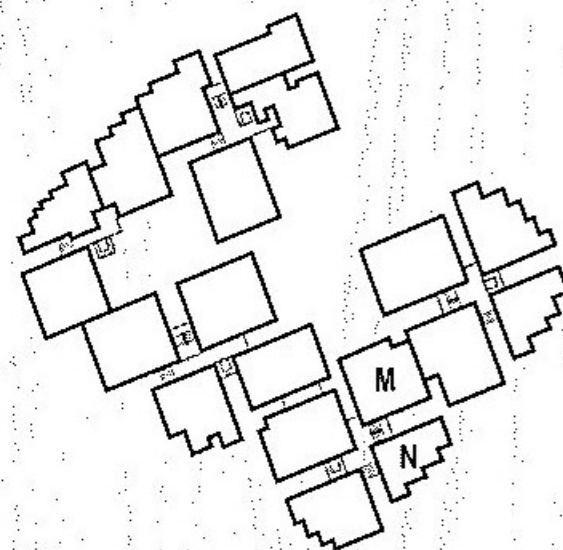
Whilst every reasonable care has been taken in the preparation of these particulars, all floor area and dimension are approximate only and are subject to final resurvey.



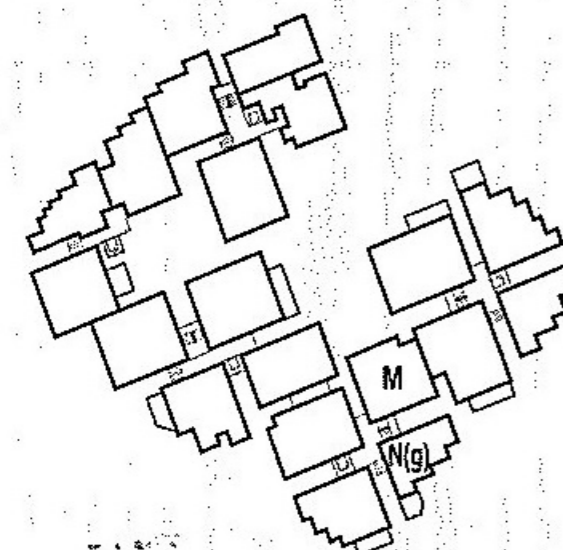
BLOCK 450



4TH STOREY



2ND ~ 3RD STOREY



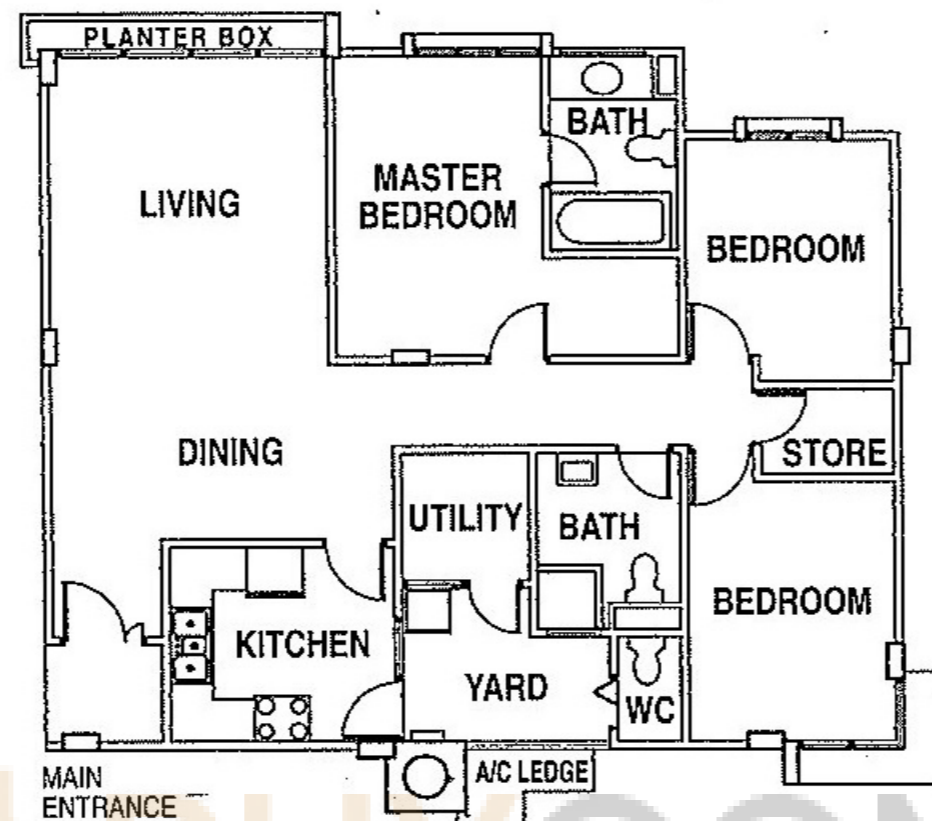
1ST STOREY



Whilst every reasonable care has been taken in the preparation of these particulars, all floor area and dimension are approximate only and are subject to final resurvey.

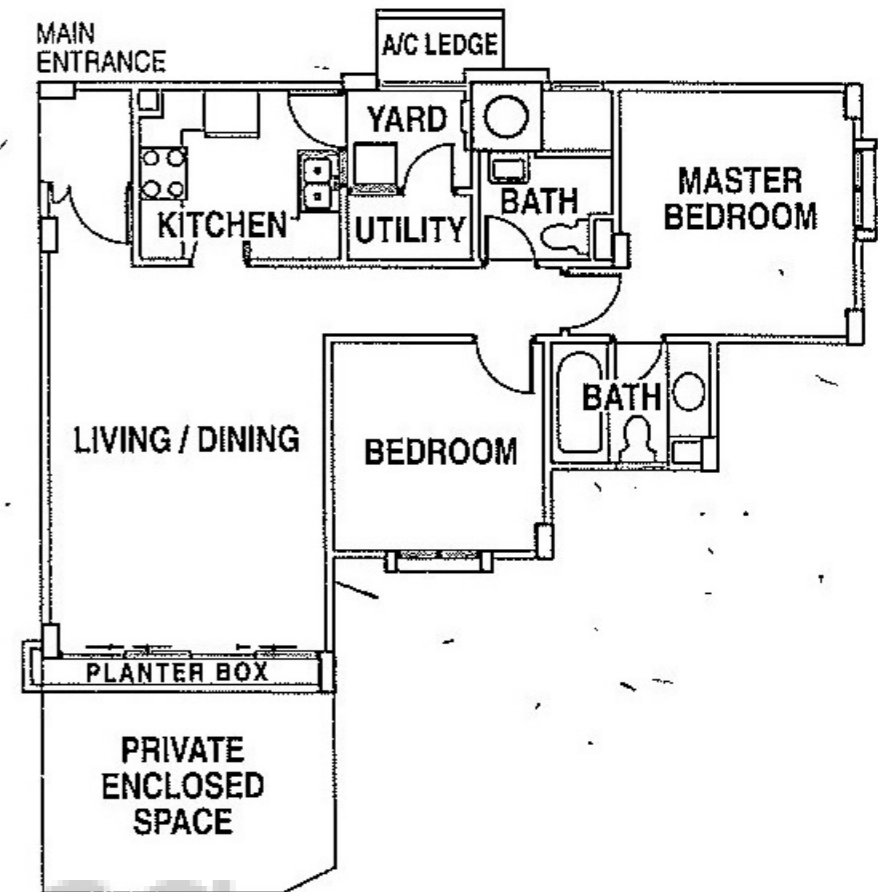
TYPE M

1st Storey • 1249 sqft (116 sqm)
 2nd ~ 3rd Storey • 1270 sqft (118 sqm)
 (with Planter Box)



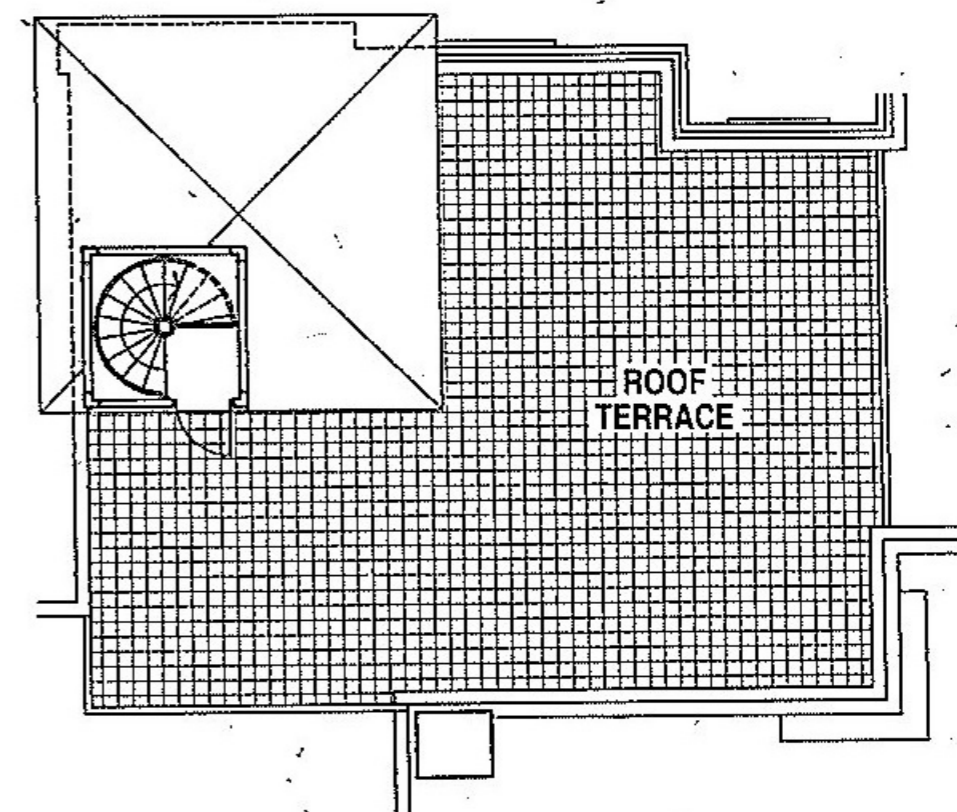
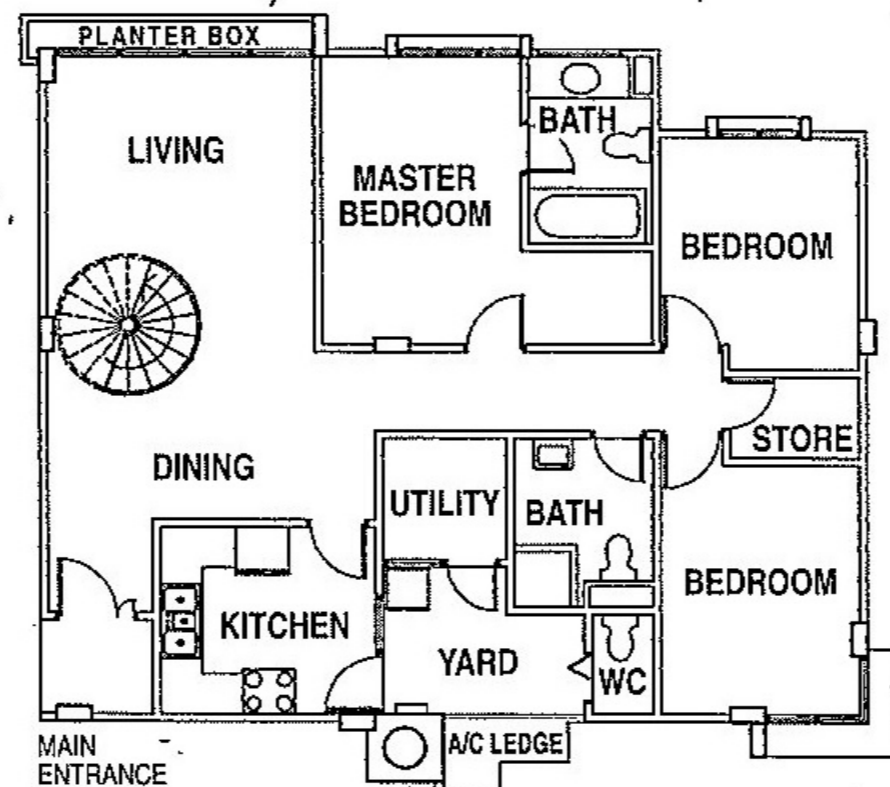
TYPE N / N(g)

1st Storey • 840 + 161 sqft (78 + 15 sqm)
 (with Private Enclosed Space)
 2nd ~ 4th Storey • 861 sqft (80 sqm)
 (with Planter Box)



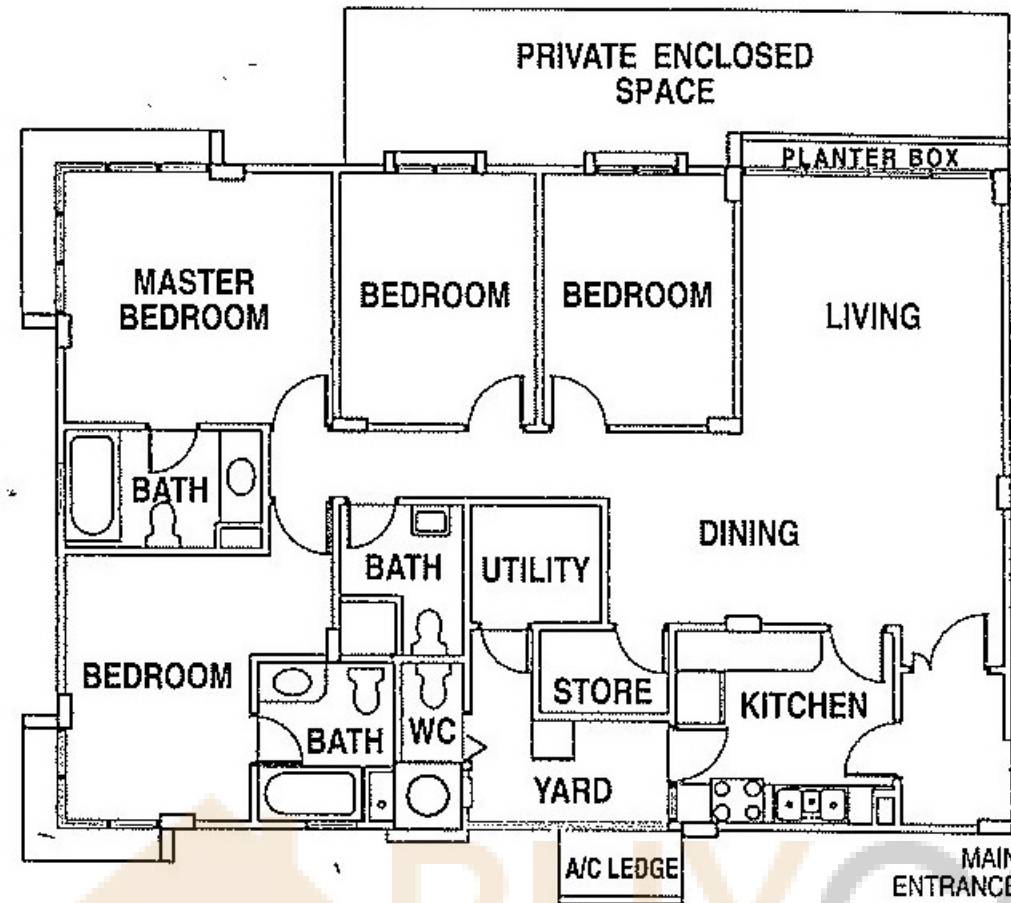
TYPE M(t)

4th Storey • 1281 + 980 sqft (119 + 91 sqm)
 (with Roof Terrace)

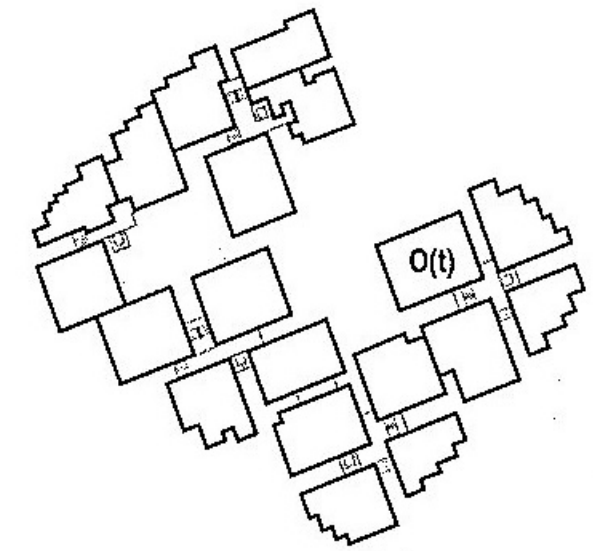


TYPE O / O (g)

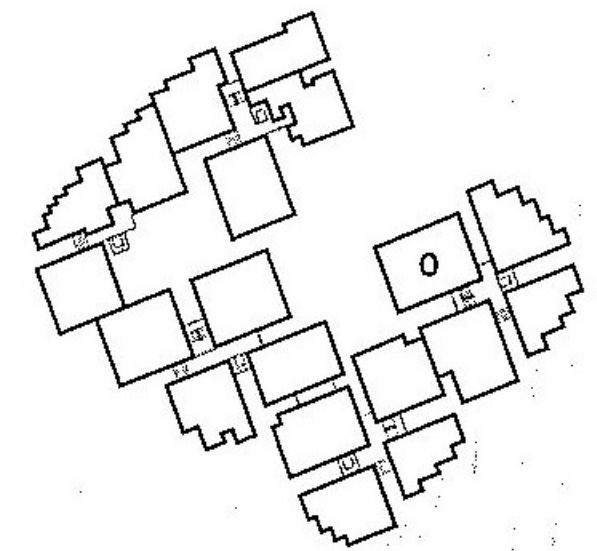
1st Storey • 1496 + 258 sqft (139 + 24 sqm)
 (with Private Enclosed Space)
 2nd ~ 3rd Storey • 1518 sqft (141 sqm)
 (with Planter Box)



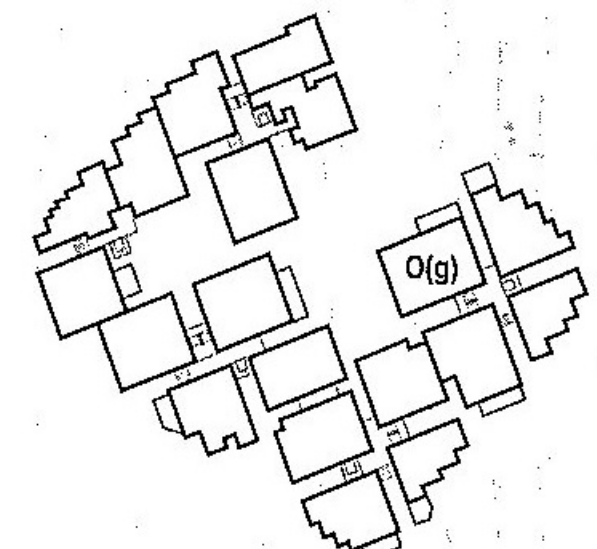
BLOCK 450



4TH STOREY



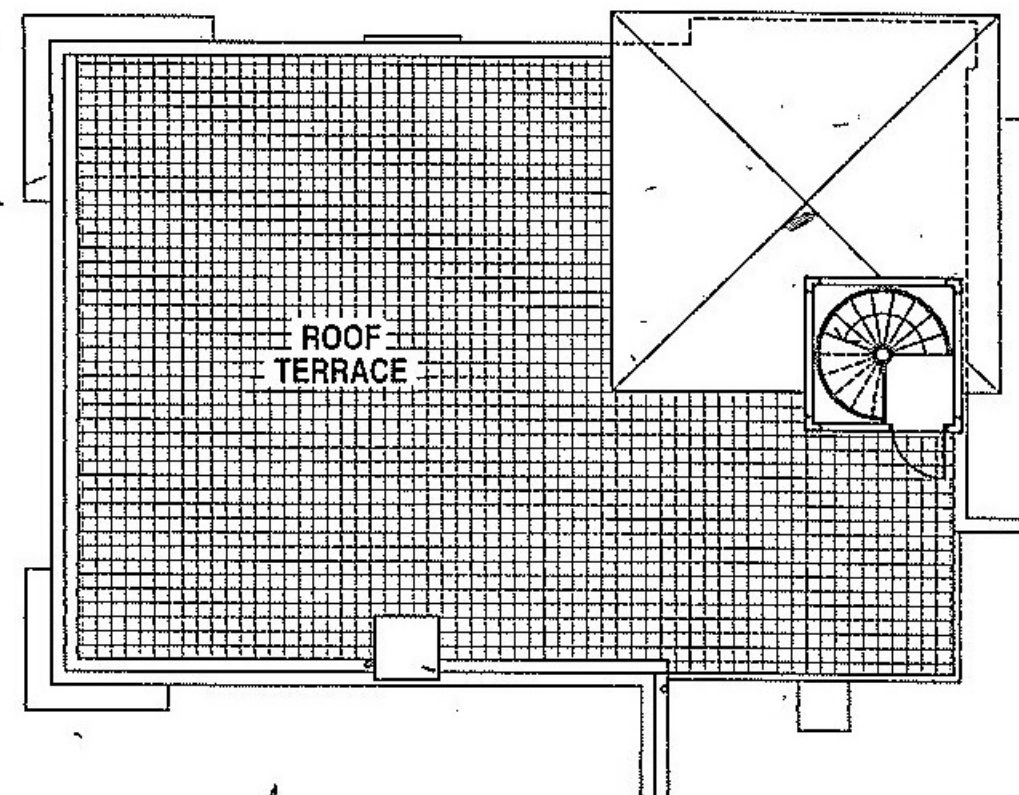
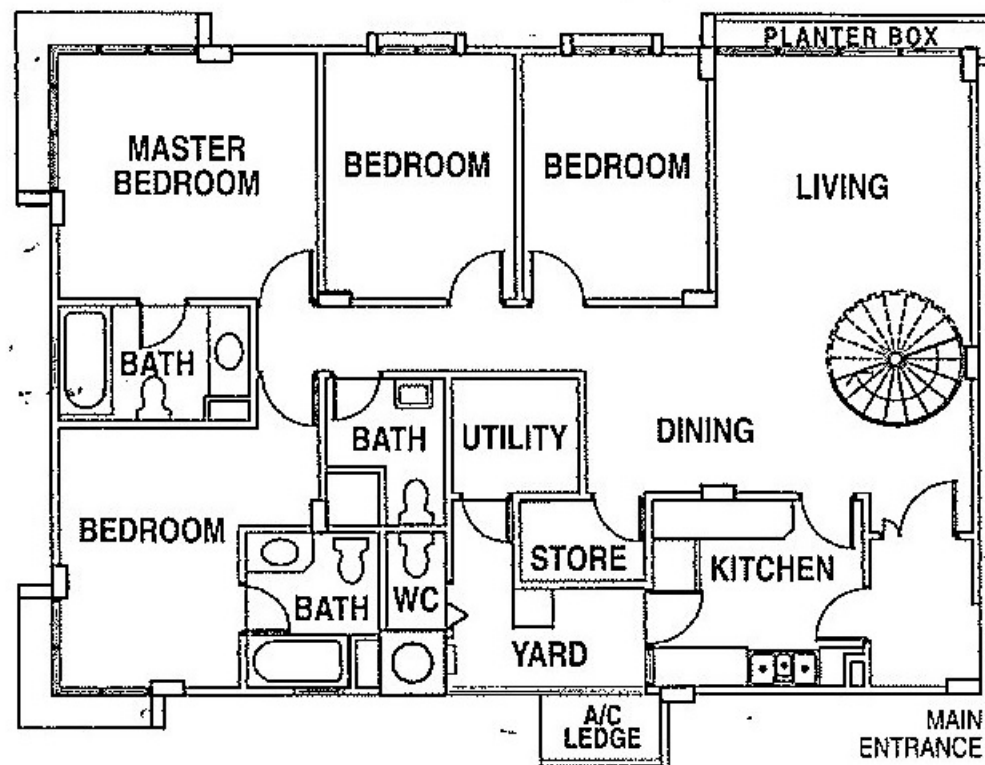
2ND ~ 3RD STOREY



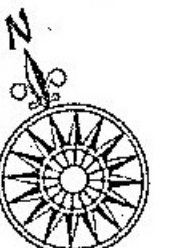
1ST STOREY

TYPE O (t)

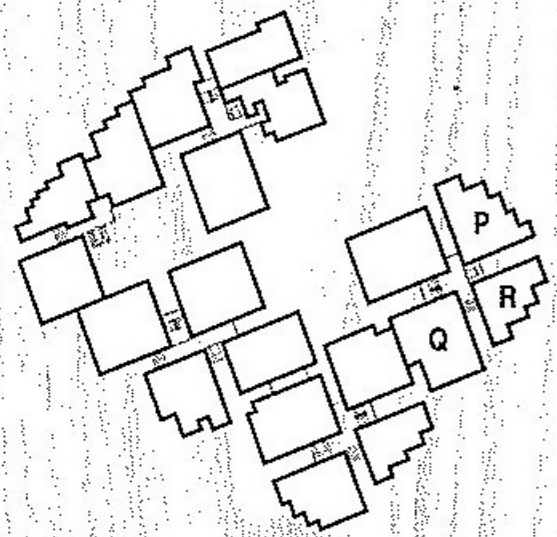
4th Storey • 1528 + 1227 sqft (142 + 114 sqm)
 (with Roof Terrace)



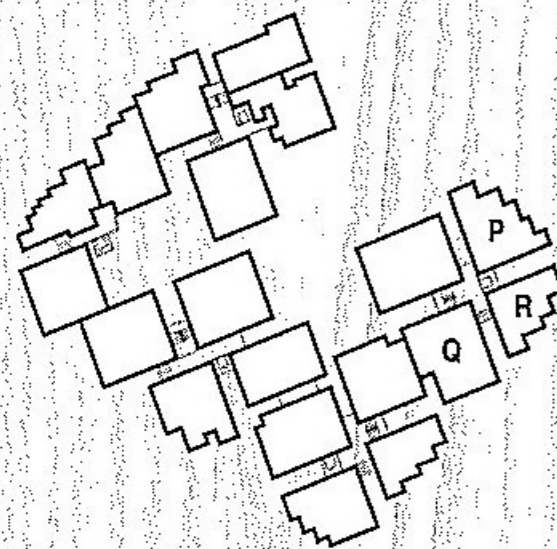
Whilst every reasonable care has been taken in the preparation of these particulars, all floor area and dimension are approximate only and are subject to final survey.



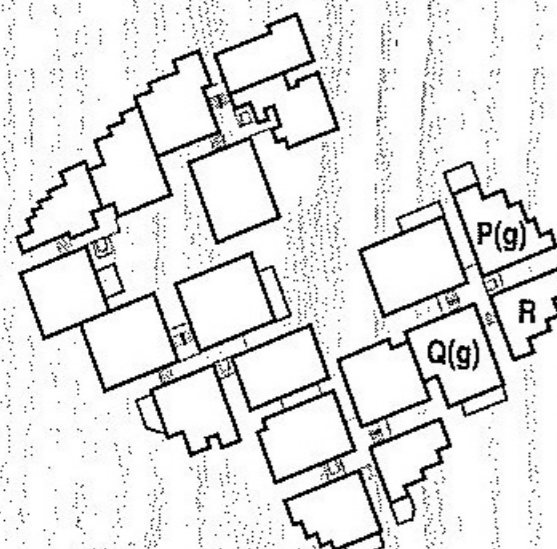
BLOCK 450



4TH STOREY



2ND ~ 3RD STOREY



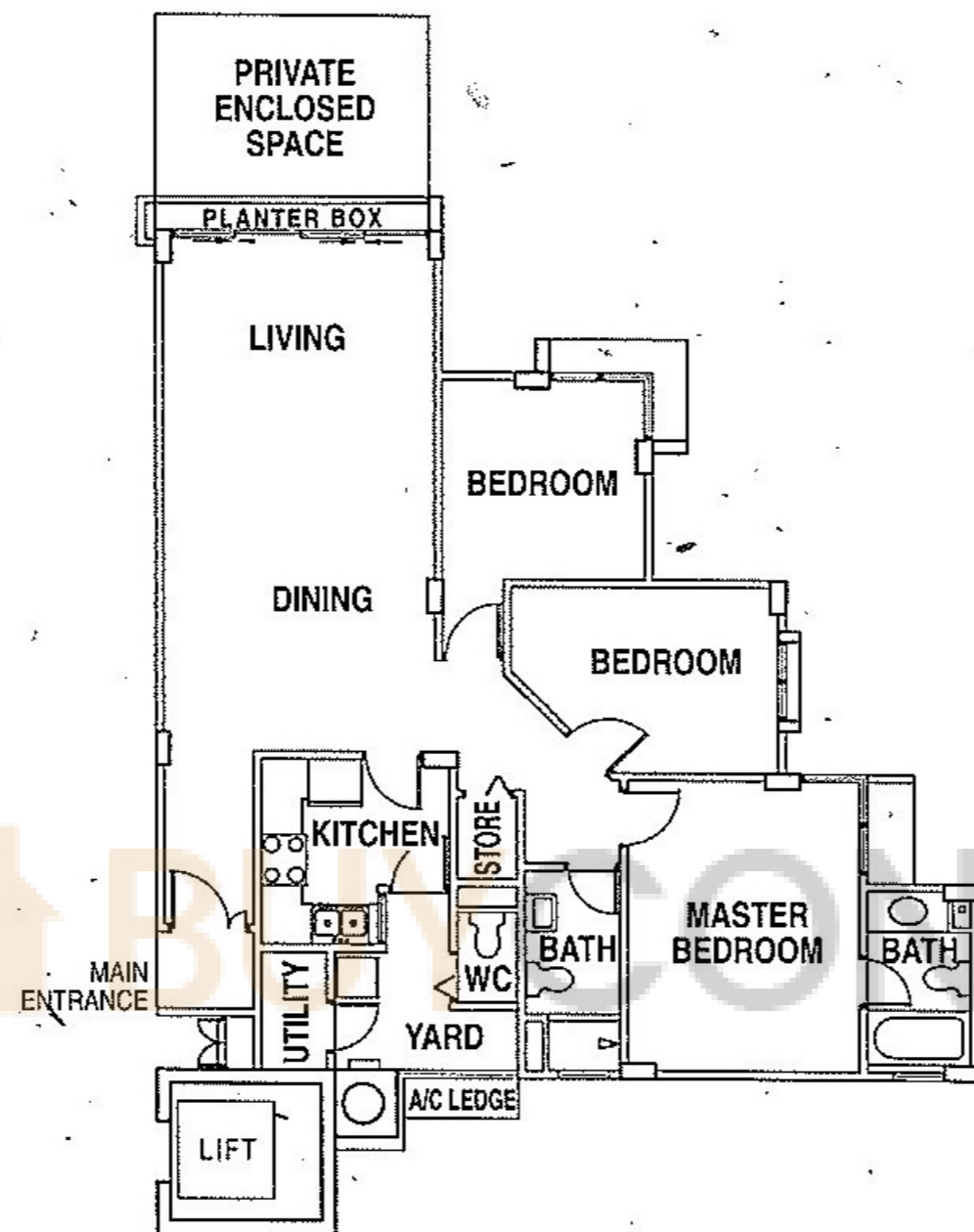
1ST STOREY



Whilst every reasonable care has been taken in the preparation of these particulars, all floor area and dimension are approximate only and are subject to final survey.

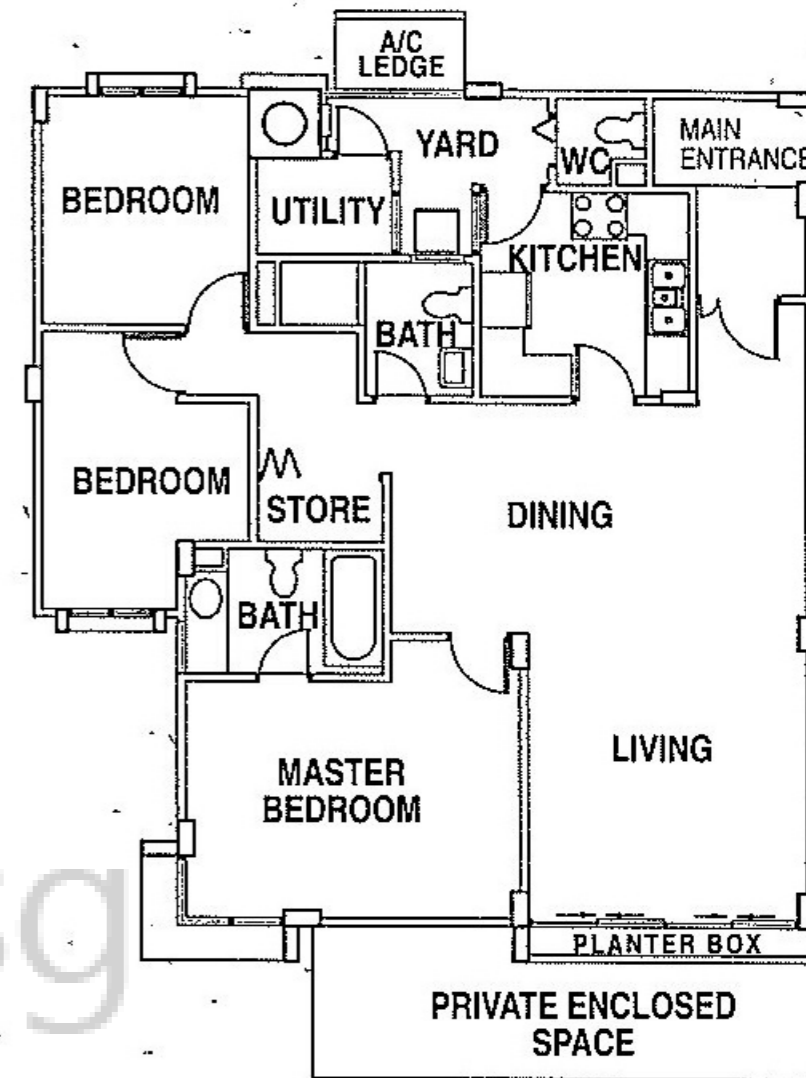
TYPE P / P(g)

- 1st Storey • 1165 + 140 sqft (108 + 15 sqm)
(with Private Enclosed Space)
- 2nd ~ 4th Storey • 1184 sqft (110 sqm)
(with Planter Box)



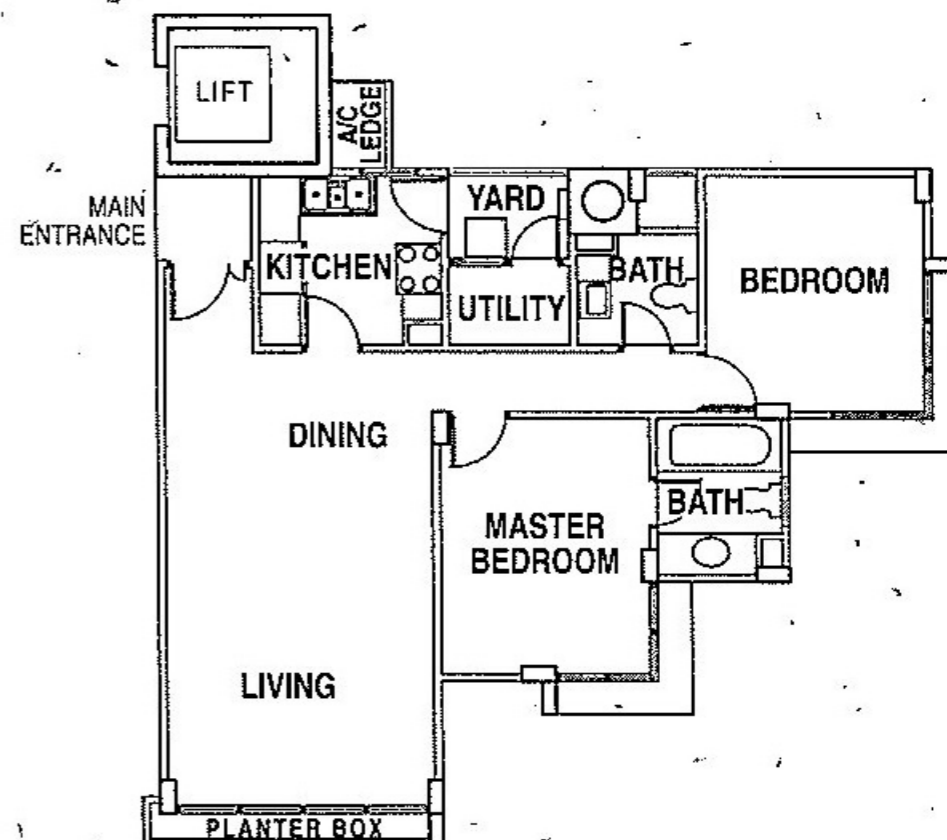
TYPE Q / Q(g)

- 1st Storey • 1270 + 172 sqft (118 + 16 sqm)
(with Private Enclosed Space)
- 2nd ~ 4th Storey • 1292 sqft (120 sqm)
(with Planter Box)



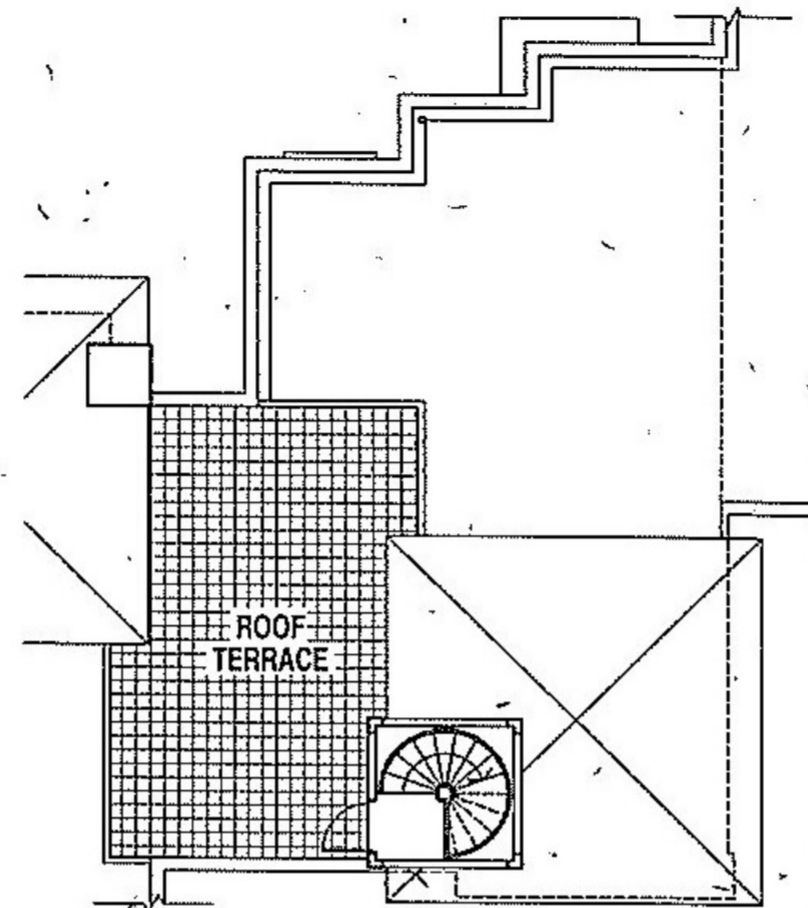
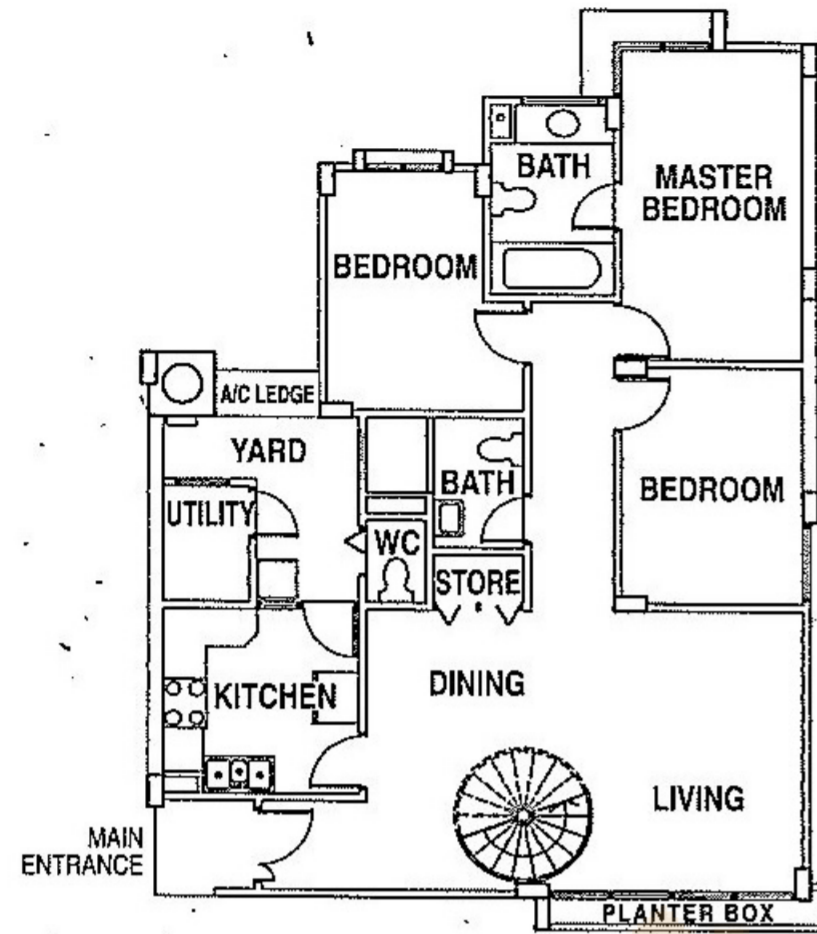
TYPE R

- 1st Storey • 915 sqft (85 sqm)
- 2nd ~ 4th Storey • 936 sqft (87 sqm)
(with Planter Box)

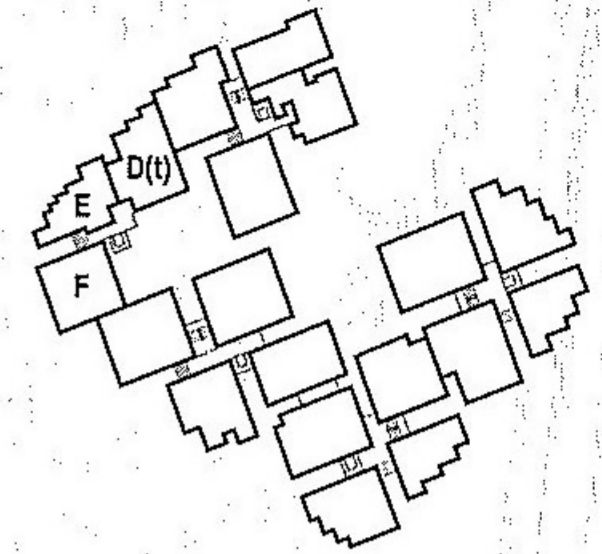


TYPE D (t)

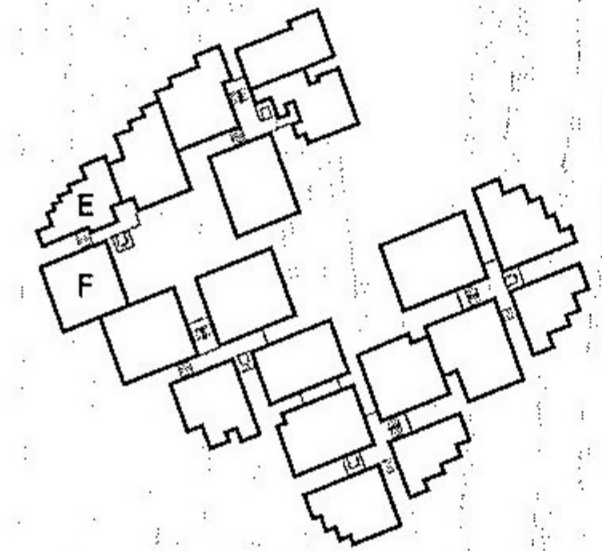
4th Storey • 1238 + 388 sqft (115 + 36 sqm)
(with Roof Terrace)



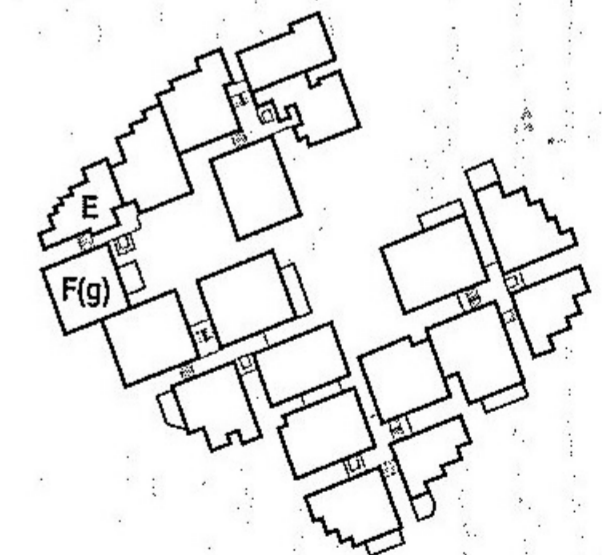
BLOCK 450



4TH STOREY



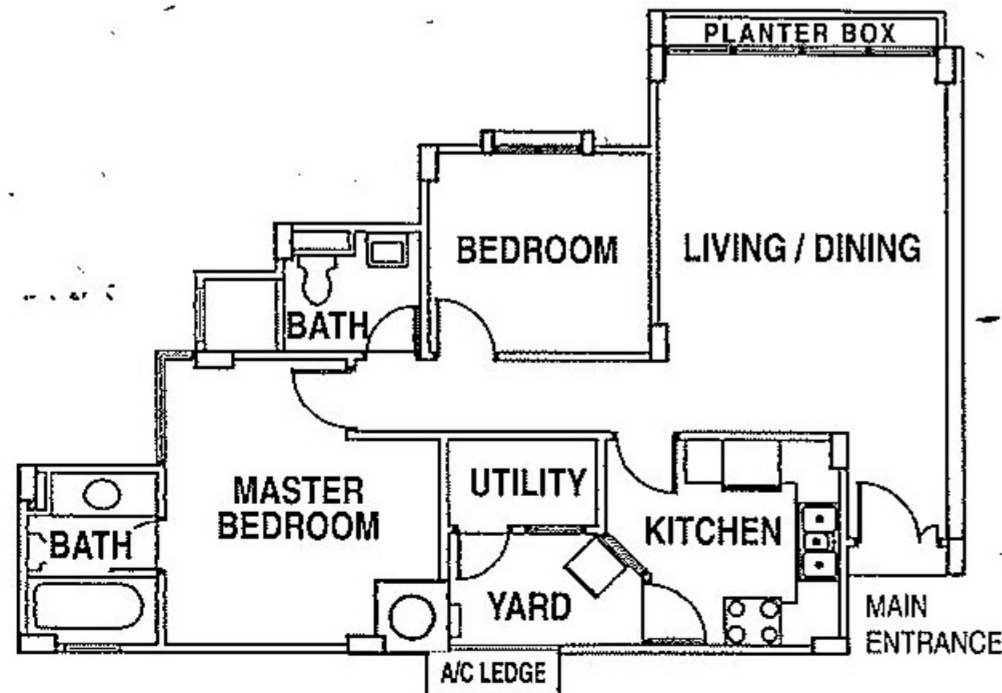
2ND ~ 3RD STOREY



1ST STOREY

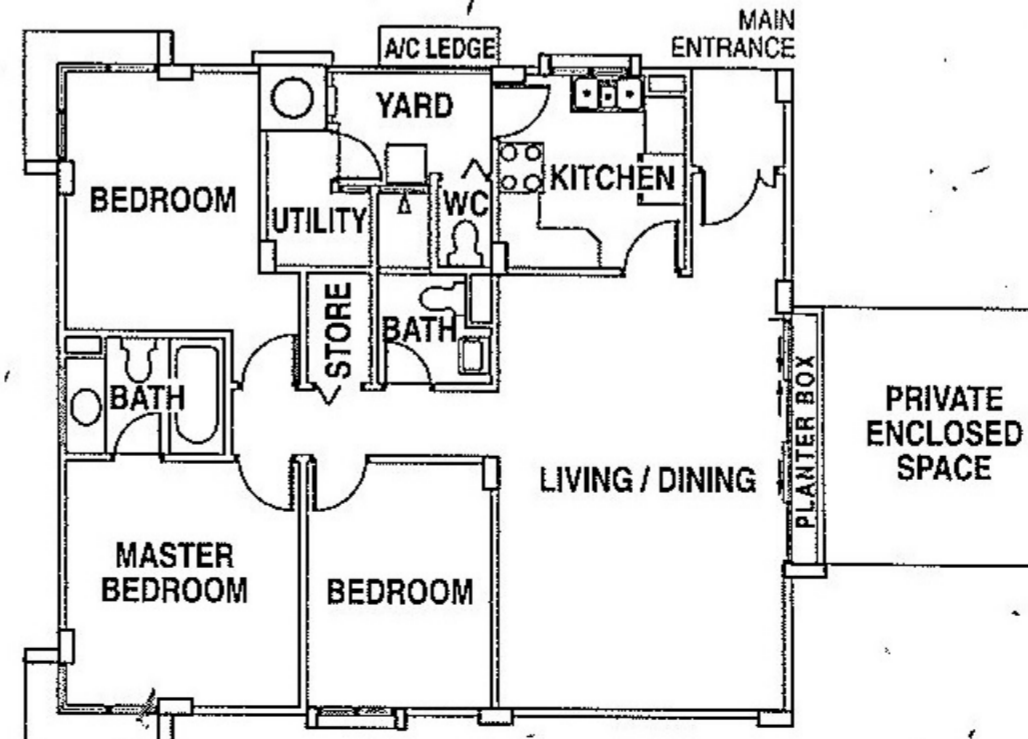
TYPE E

1st Storey • 850 sqft (79 sqm)
2nd ~ 4th Storey • 872 sqft (81 sqm)
(with Planter Box)



TYPE F / F(g)

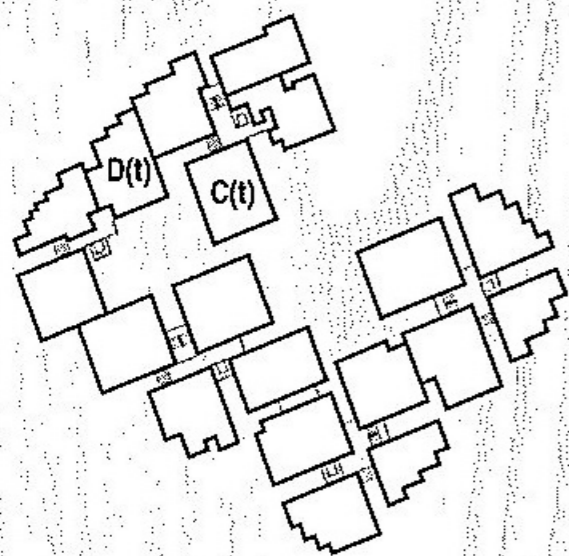
1st Storey • 1163 + 172 sqft (108 + 16 sqm)
(with Private Enclosed Space)
2nd ~ 4th Storey • 1184 sqft (110 sqm)
(with Planter Box)



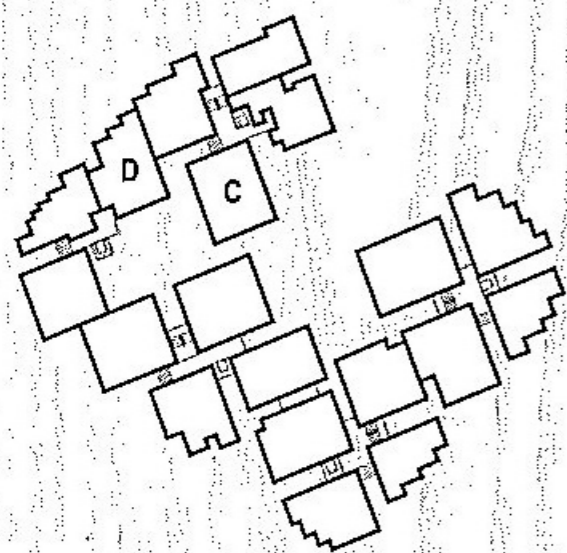
Whilst every reasonable care has been taken in the preparation of these particulars, all floor area and dimension are approximate only and are subject to final resurvey.



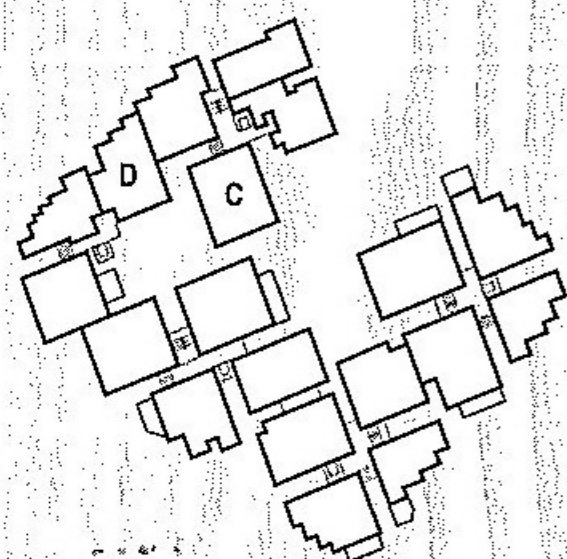
BLOCK 450



4TH STOREY

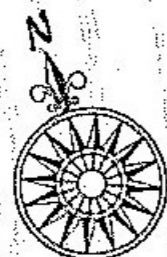


2ND ~ 3RD STOREY



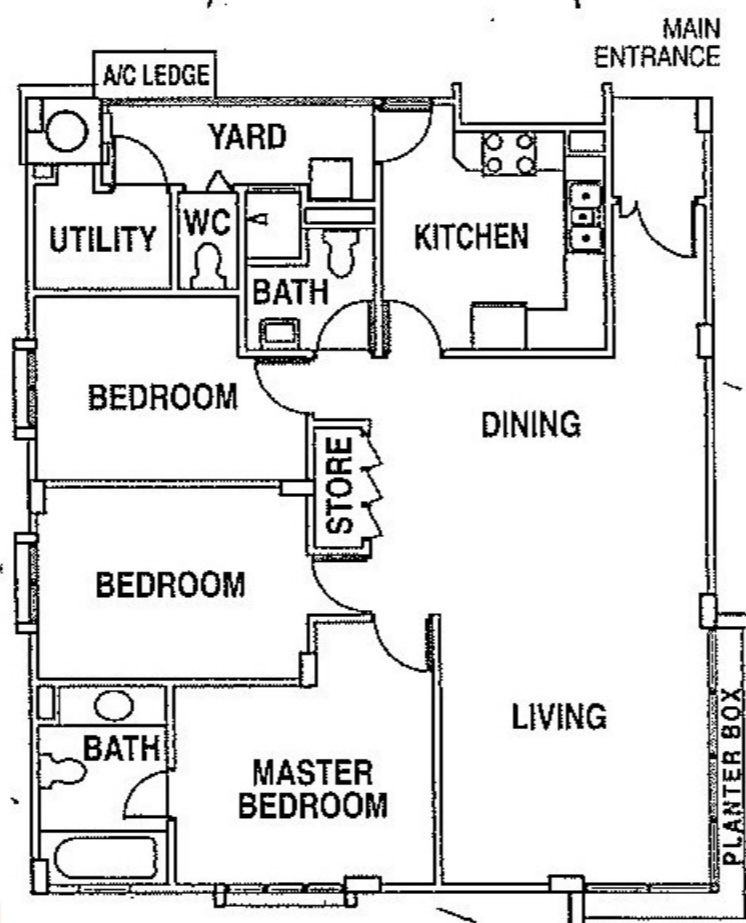
1ST STOREY

Whilst every reasonable care has been taken in the preparation of these particulars, all floor area and dimension are approximate only and are subject to final resurvey.



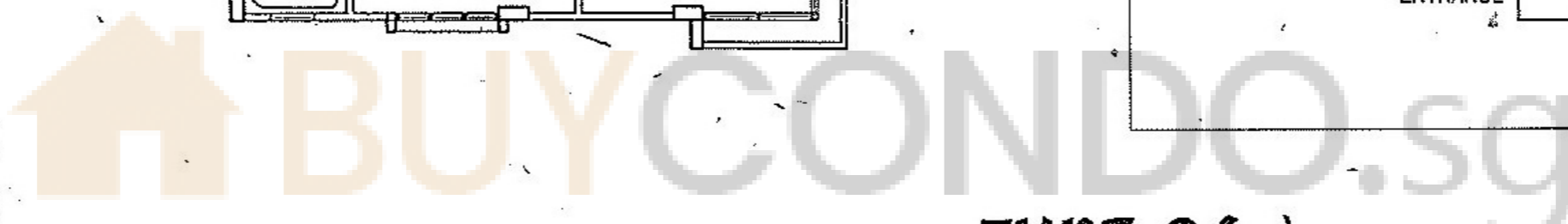
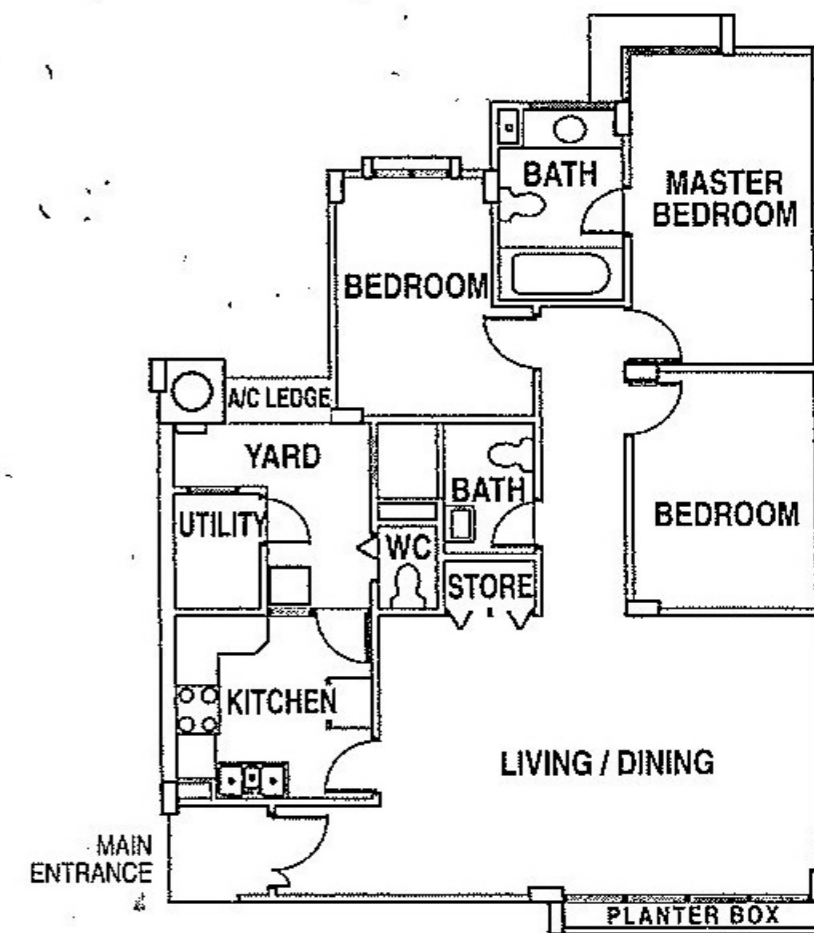
TYPE C

1st Storey • 1270 sqft (118 sqm)
 2nd ~ 3rd Storey • 1302 sqft (121 sqm)
 (with Planter Box)



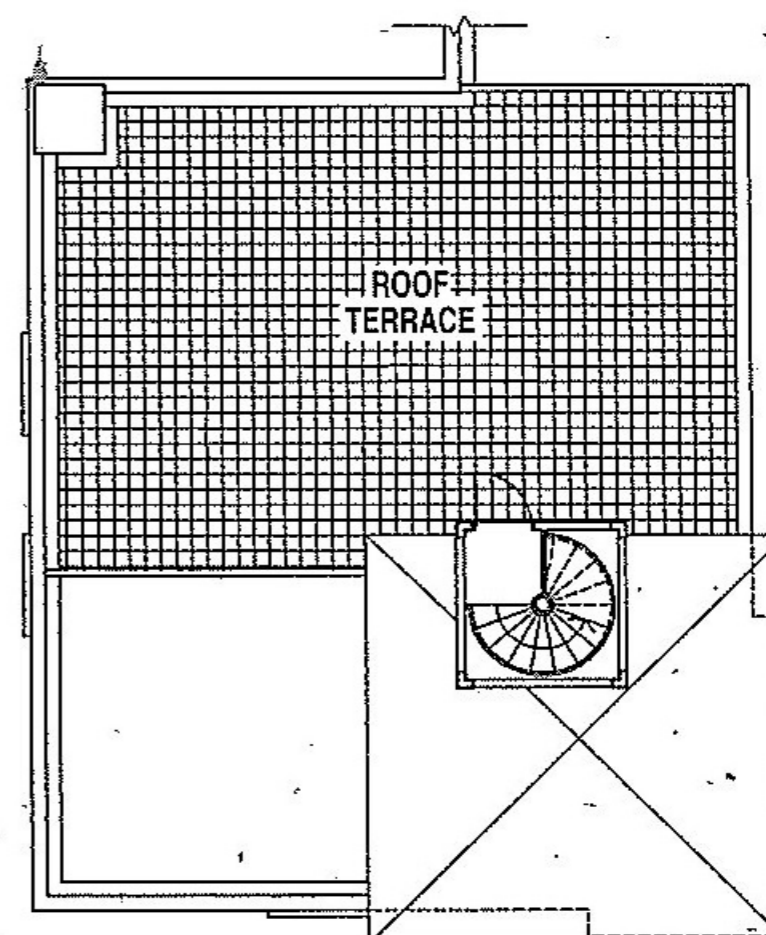
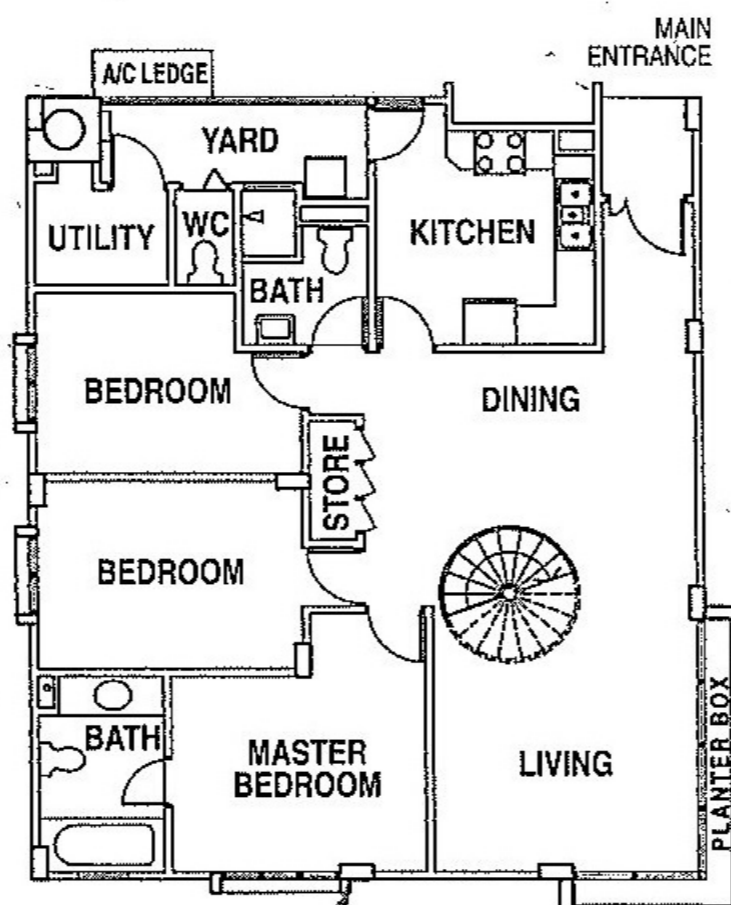
TYPE D

1st Storey • 1206 sqft (112 sqm)
 2nd ~ 3rd Storey • 1227 sqft (114 sqm)
 (with Planter Box)



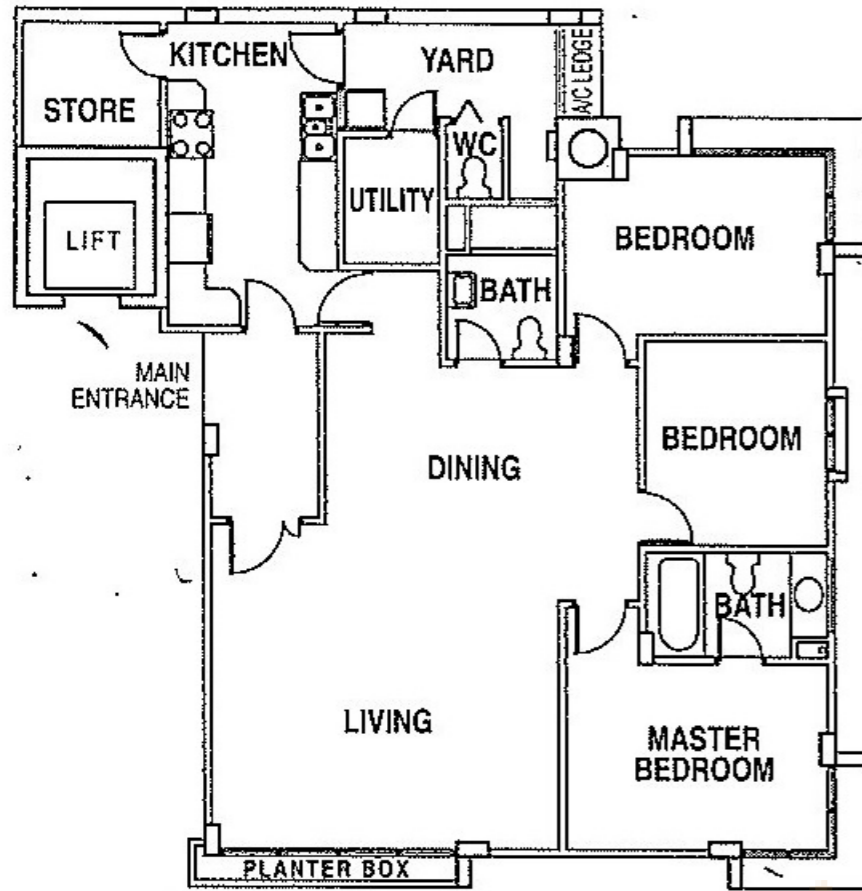
TYPE C (t)

4th Storey • 1315 + 786 sqft. (122 + 73 sqm)
 (with Roof Terrace)



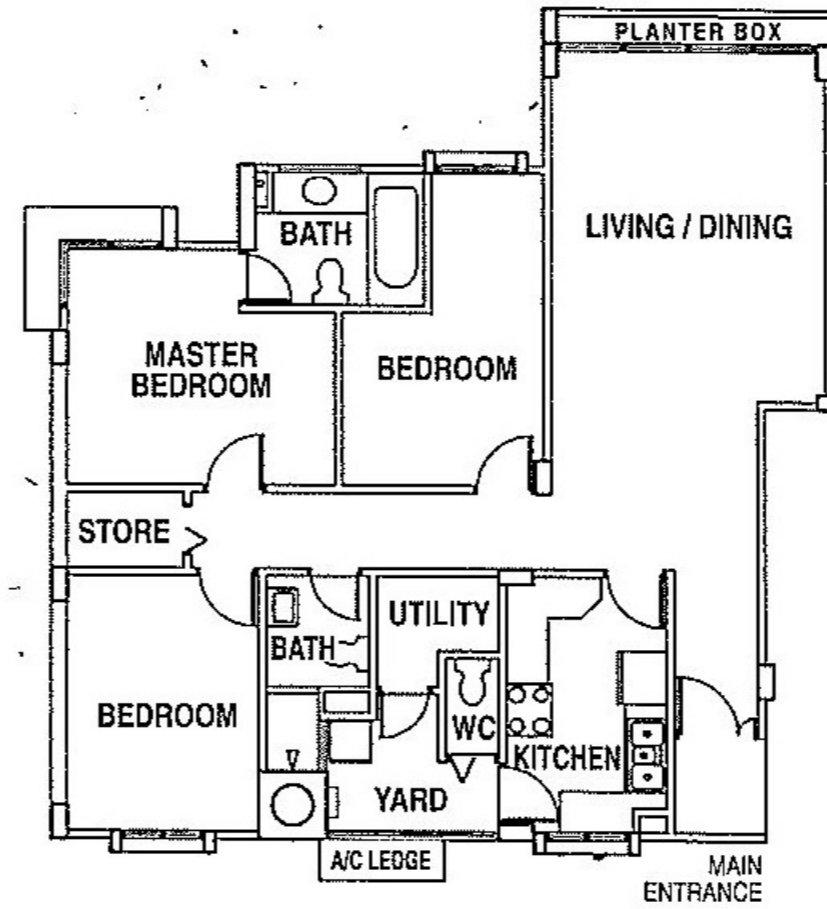
TYPE A

2nd ~ 3rd Storey • 1464 sqft (156 sqm)

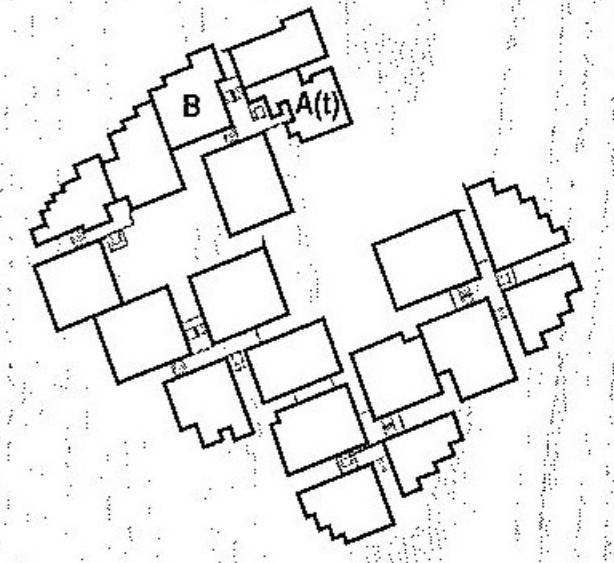


TYPE B

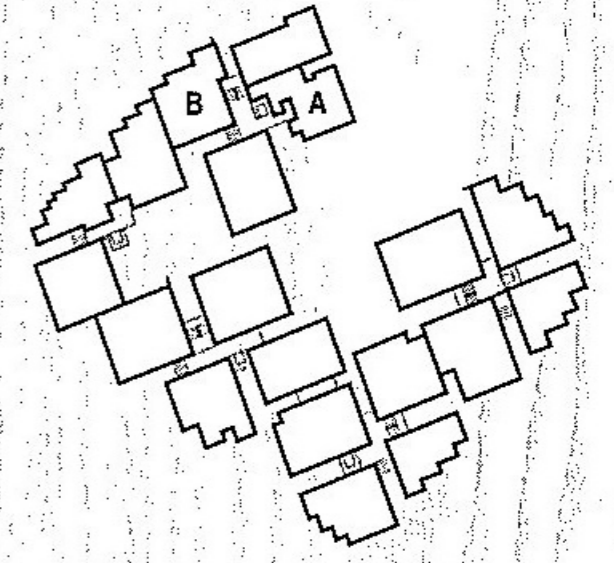
1st Storey • 1165 sqft (108 sqm) /
2nd ~ 4th Storey • 1184 sqft (110 sqm)
(with Planter Box)



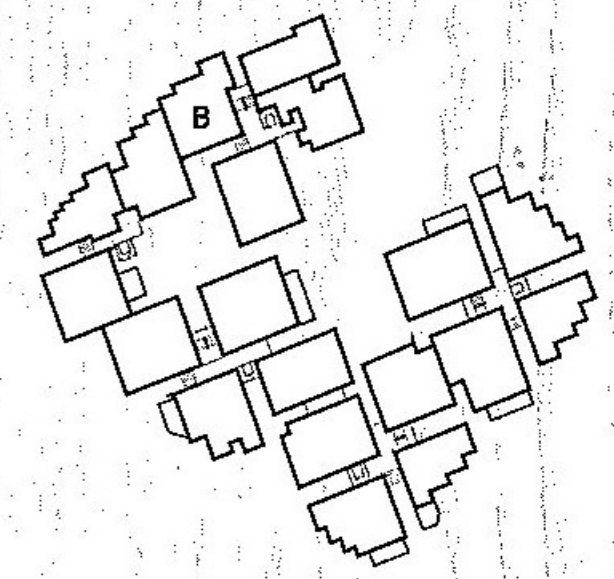
BLOCK 450



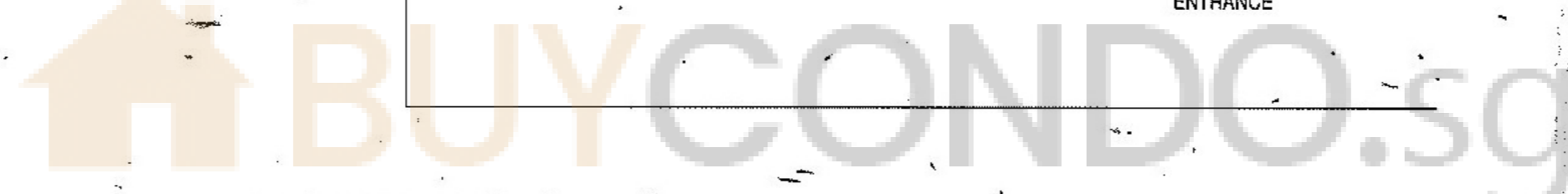
4TH STOREY



2ND ~ 3RD STOREY

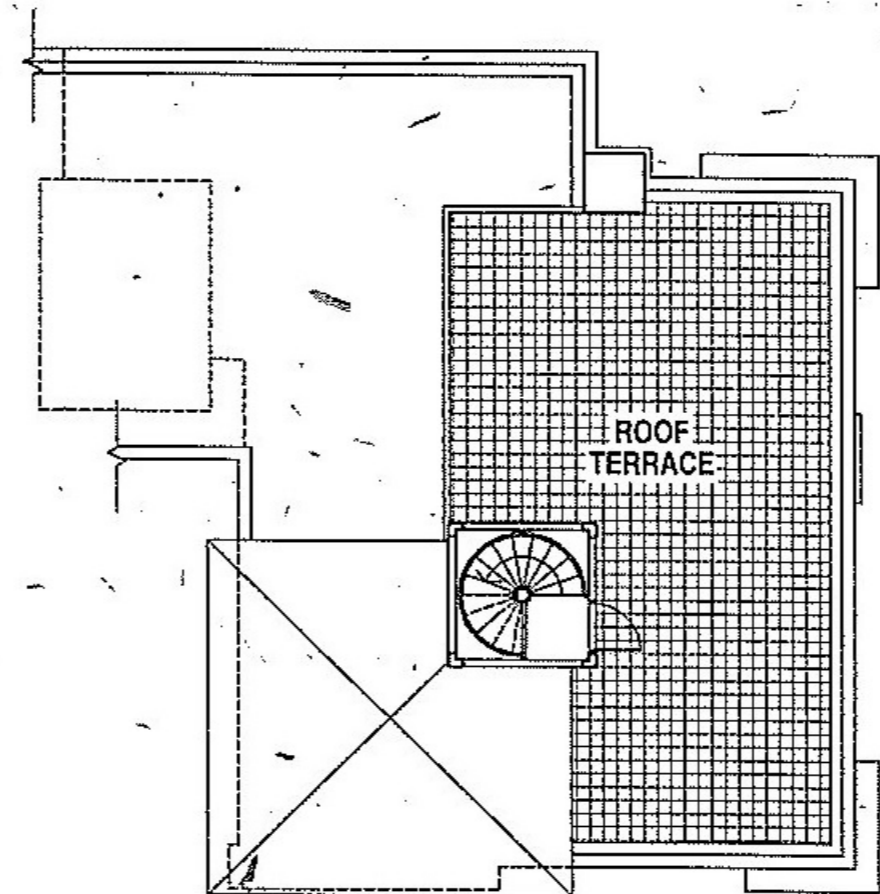
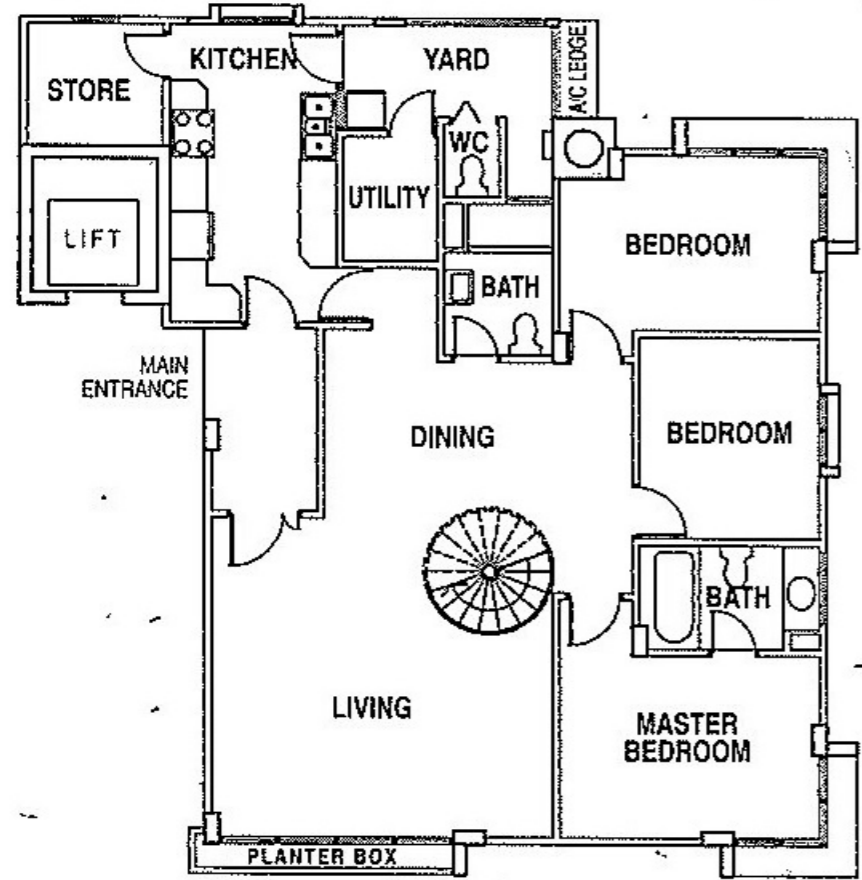


1ST STOREY



TYPE A (t)

4th Storey • 1475 + 721 sqft (157 + 67 sqm)
(with Roof Terrace)



Whilst every reasonable care has been taken in the preparation of these particulars, all floor area and dimension are approximate only and are subject to final survey.

