

UNIT DISTRIBUTION CHART

- 3 - BEDROOM PREMIUM
- 5 - BEDROOM PREMIUM
- 4 - BEDROOM PREMIUM

BLOCK 6

CHOICE UNITS

UNIT STOREY	01	02	03	04
24	5BR P2 - H	5BR P2 - H	4BR P2 - H	4BR P2 - H
23	5BR P2	5BR P2	4BR P2	4BR P2
22	5BR P2	5BR P2	4BR P2	4BR P2
21	5BR P2	5BR P2	4BR P2	4BR P2
20	5BR P2	5BR P2	4BR P2	4BR P2
19	5BR P2	5BR P2	4BR P2	4BR P2
18	5BR P2	5BR P2	4BR P2	4BR P2
17	5BR P2	5BR P2	4BR P2	4BR P2
16	5BR P2	5BR P2	4BR P2	4BR P2
15	5BR P2	5BR P2	4BR P2	4BR P2
14	5BR P2	5BR P2	4BR P2	4BR P2
13	5BR P2	5BR P2	4BR P2	4BR P2
12	5BR P2	5BR P2	4BR P2	4BR P2
11	5BR P2	5BR P2	4BR P2	4BR P2
10	5BR P2	5BR P2	4BR P2	4BR P2
9	5BR P2	5BR P2	4BR P2	4BR P2
8	5BR P2	5BR P2	4BR P2	4BR P2
7	5BR P2	5BR P2	4BR P2	4BR P2
6	5BR P2	5BR P2	4BR P2	4BR P2
5	5BR P2	5BR P2	4BR P2	4BR P2
4	5BR P2	5BR P2	4BR P2	4BR P2
3	5BR P2	5BR P2	4BR P2	4BR P2
2	5BR P2	5BR P2	4BR P2	4BR P2
1				
B1				

BLOCK 6A

CHOICE UNITS

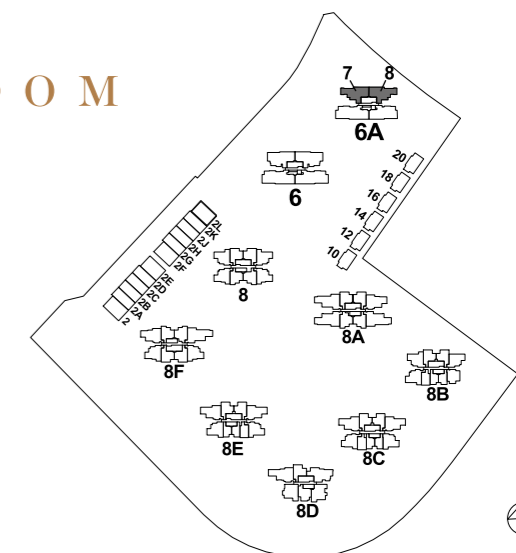
UNIT STOREY	05	06	07	08
24	4BR P3 - H	5BR P2 - H	3BR P3 - H	3BR P3 - H
23	4BR P3	5BR P2	3BR P3	3BR P3
22	4BR P3	5BR P2	3BR P3	3BR P3
21	4BR P3	5BR P2	3BR P3	3BR P3
20	4BR P3	5BR P2	3BR P3	3BR P3
19	4BR P3	5BR P2	3BR P3	3BR P3
18	4BR P3	5BR P2	3BR P3	3BR P3
17	4BR P3	5BR P2	3BR P3	3BR P3
16	4BR P3	5BR P2	3BR P3	3BR P3
15	4BR P3	5BR P2	3BR P3	3BR P3
14	4BR P3	5BR P2	3BR P3	3BR P3
13	4BR P3	5BR P2	3BR P3	3BR P3
12	4BR P3	5BR P2	3BR P3	3BR P3
11	4BR P3	5BR P2	3BR P3	3BR P3
10	4BR P3	5BR P2	3BR P3	3BR P3
9	4BR P3	5BR P2	3BR P3	3BR P3
8	4BR P3	5BR P2	3BR P3	3BR P3
7	4BR P3	5BR P2	3BR P3	3BR P3
6	4BR P3	5BR P2	3BR P3	3BR P3
5	4BR P3	5BR P2	3BR P3	3BR P3
4	4BR P3	5BR P2	3BR P3	3BR P3
3	4BR P3	5BR P2	3BR P3	3BR P3
2	4BR P3	5BR P2	3BR P3	3BR P3
1				
B1				

3 - BEDROOM

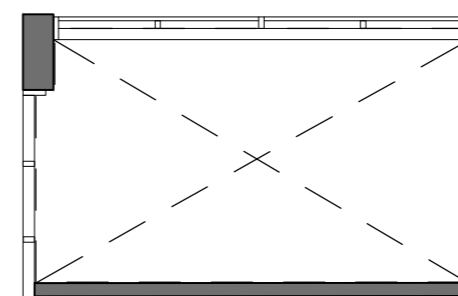
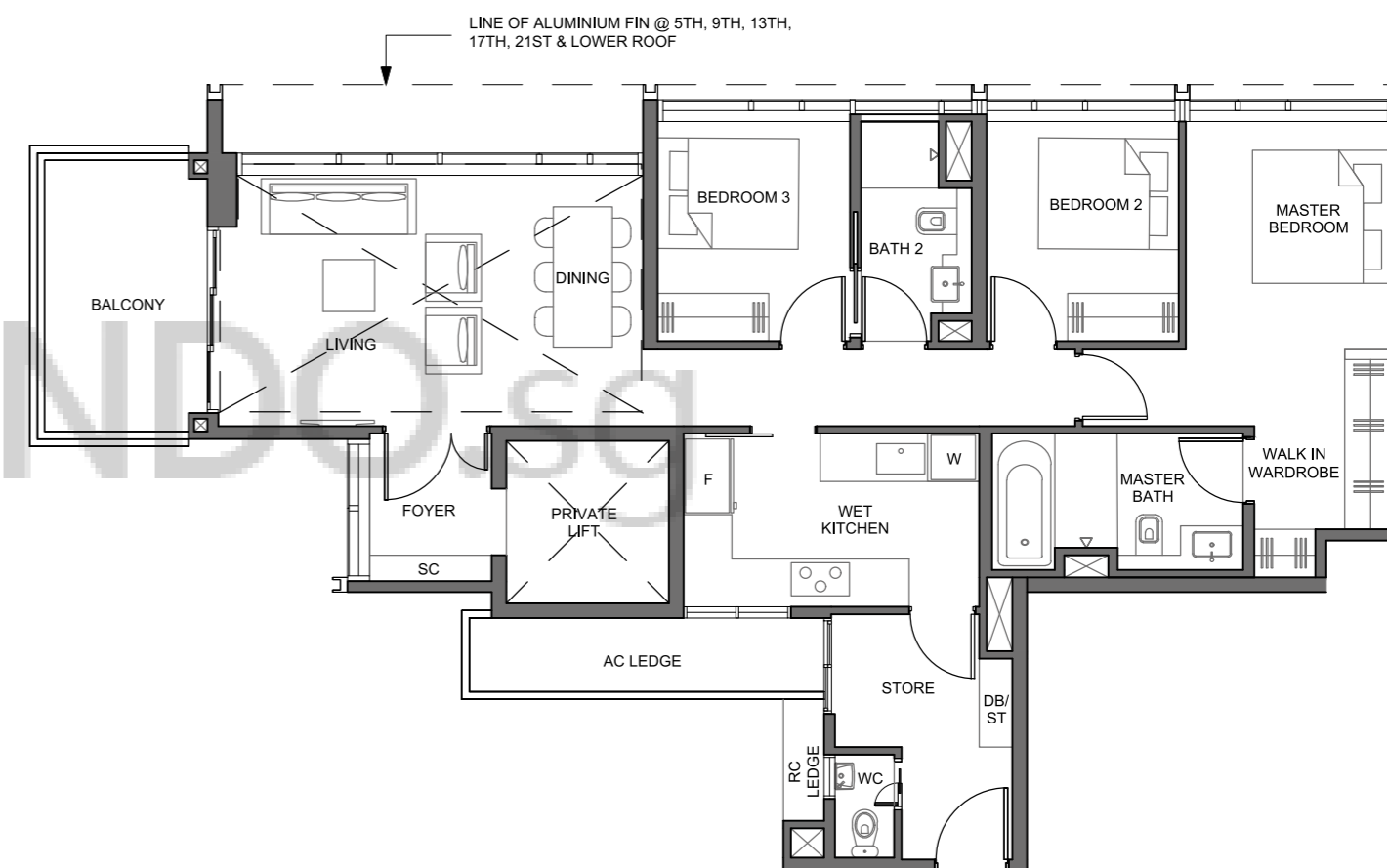
TYPE 3BR P3

Area 116 sq m / (approx. 1249 sq ft)
(Inclusive of 10 sq m balcony & 5 sq m AC ledge)

Block 6A #02-07 TO #23-07
#02-08 TO #23-08 (mirrored)



Key plan is not drawn to scale



TYPE 3BR P3 - H

Area 137 sq m / (approx. 1475 sq ft)
(Inclusive of 10 sq m balcony, 5 sq m AC ledge & 21 sq m high void)

Block 6A #24-07 & #24-08 (mirrored)



- LEGEND:**
 F - Fridge DB - Distribution Board ST - Storage W - Washer & Dryer Only Applicable to High Void
 U/CF - Under Counter Fridge WIC - Under Counter Wine Chiller

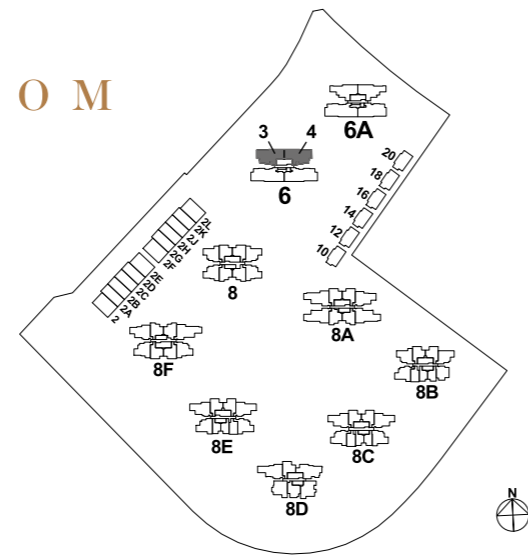
All plans are subjected as may be approved by relevant authorities. Floor areas are approximate measurements and are subjected to final survey. The balcony shall not be enclosed unless with the approved screen. For illustration of the approved balcony screen, please refer to Annexure 1 of this brochure.

4 - BED ROOM

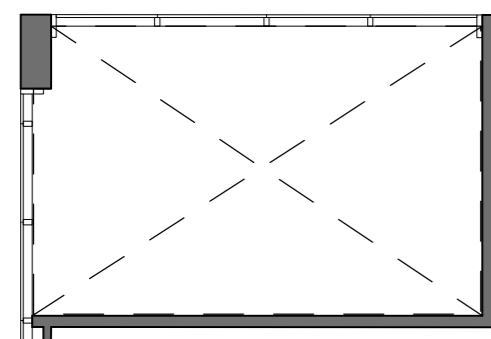
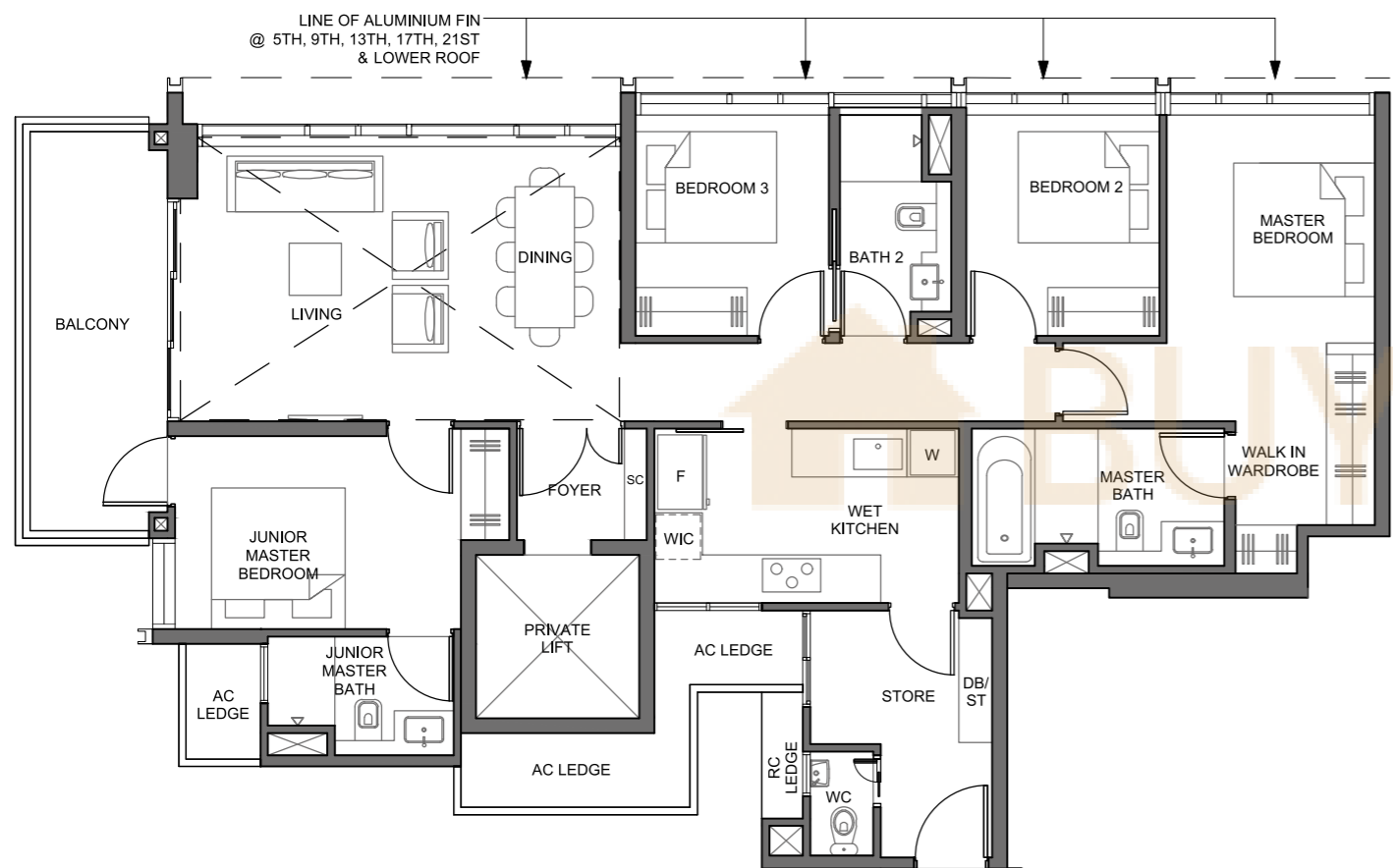
TYPE 4BR P2

Area 139 sq m / (approx. 1496 sq ft)
(Inclusive of 12 sq m balcony
& 8 sq m AC ledge)

Block 6 #02-03 TO #23-03
#02-04 TO #23-04 (mirrored)



Key plan is not drawn to scale



TYPE 4BR P2 - H
Area 164 sq m / (approx. 1765 sq ft)
(Inclusive of 12 sq m balcony,
8 sq m AC ledge & 25 sq m
high void)

Block 6 #24-03 & #24-04 (mirrored)



LEGEND:
F - Fridge DB - Distribution Board ST - Storage W - Washer & Dryer Only Applicable to High Void
U/CF - Under Counter Fridge WIC - Under Counter Wine Chiller

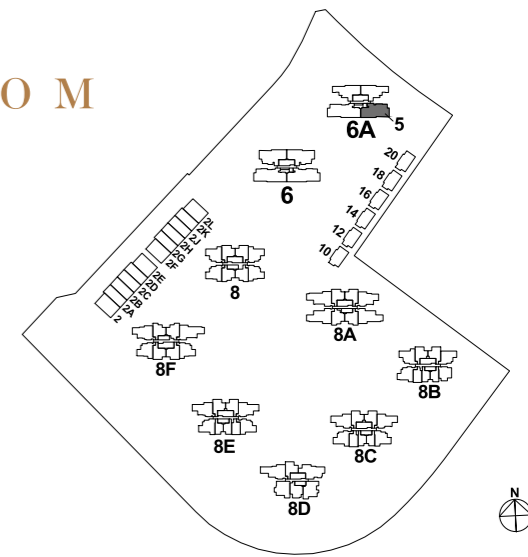
All plans are subjected as may be approved by relevant authorities. Floor areas are approximate measurements and are subjected to final survey. The balcony shall not be enclosed unless with the approved screen. For illustration of the approved balcony screen, please refer to Annexure 1 of this brochure.

4 - BED ROOM

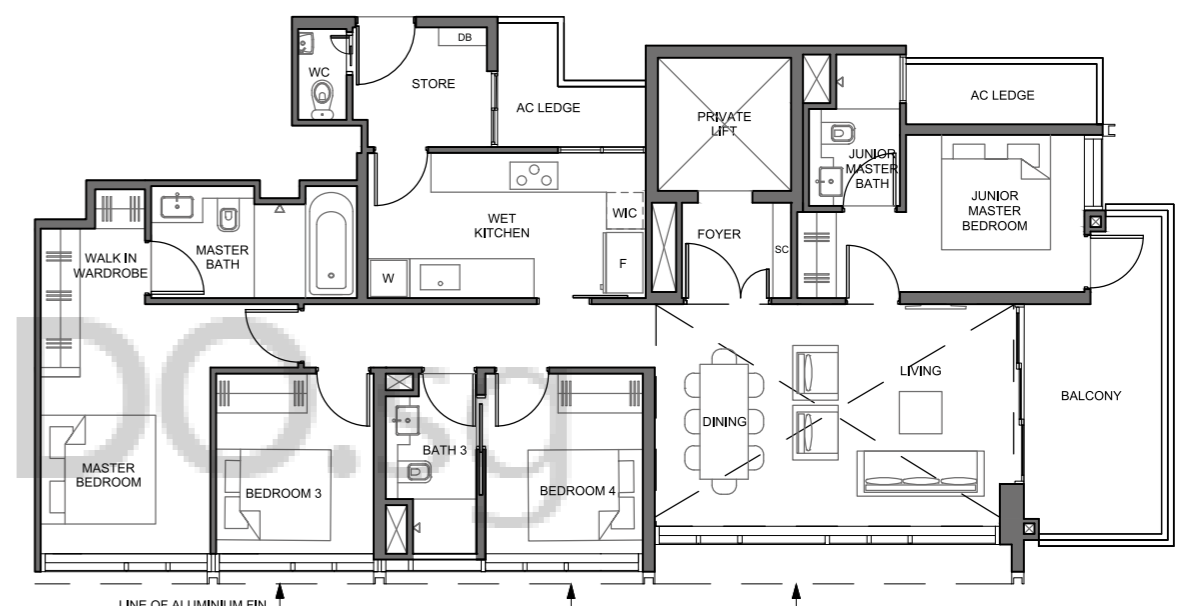
TYPE 4BR P3

Area 136 sq m / (approx. 1464 sq ft)
(Inclusive of 12 sq m balcony,
& 7 sq m AC ledge)

Block 6A #02-05 TO #23-05

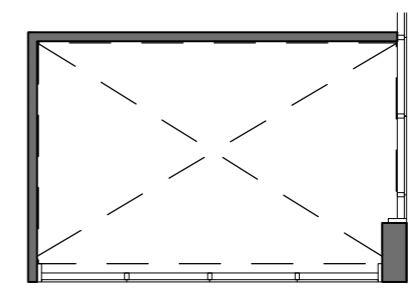


Key plan is not drawn to scale



TYPE 4BR P3 - H
Area 161 sq m / (approx. 1733 sq ft)
(Inclusive of 12 sq m balcony,
7 sq m AC ledge & 25 sq m
high void)

Block 6A #24-05



LEGEND:
F - Fridge DB - Distribution Board ST - Storage W - Washer & Dryer Only Applicable to High Void
U/CF - Under Counter Fridge WIC - Under Counter Wine Chiller

All plans are subjected as may be approved by relevant authorities. Floor areas are approximate measurements and are subjected to final survey. The balcony shall not be enclosed unless with the approved screen. For illustration of the approved balcony screen, please refer to Annexure 1 of this brochure.

5 - BED ROOM

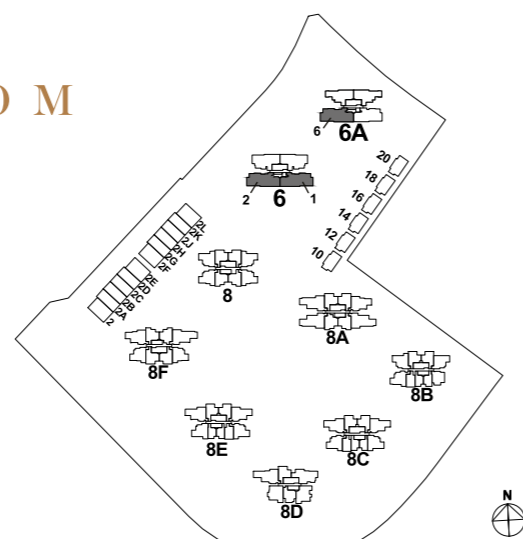
TYPE 5BR P2

Area 159 sq m / (approx. 1711 sq ft)
(Inclusive of 13 sq m balcony
& 9 sq m AC ledge)

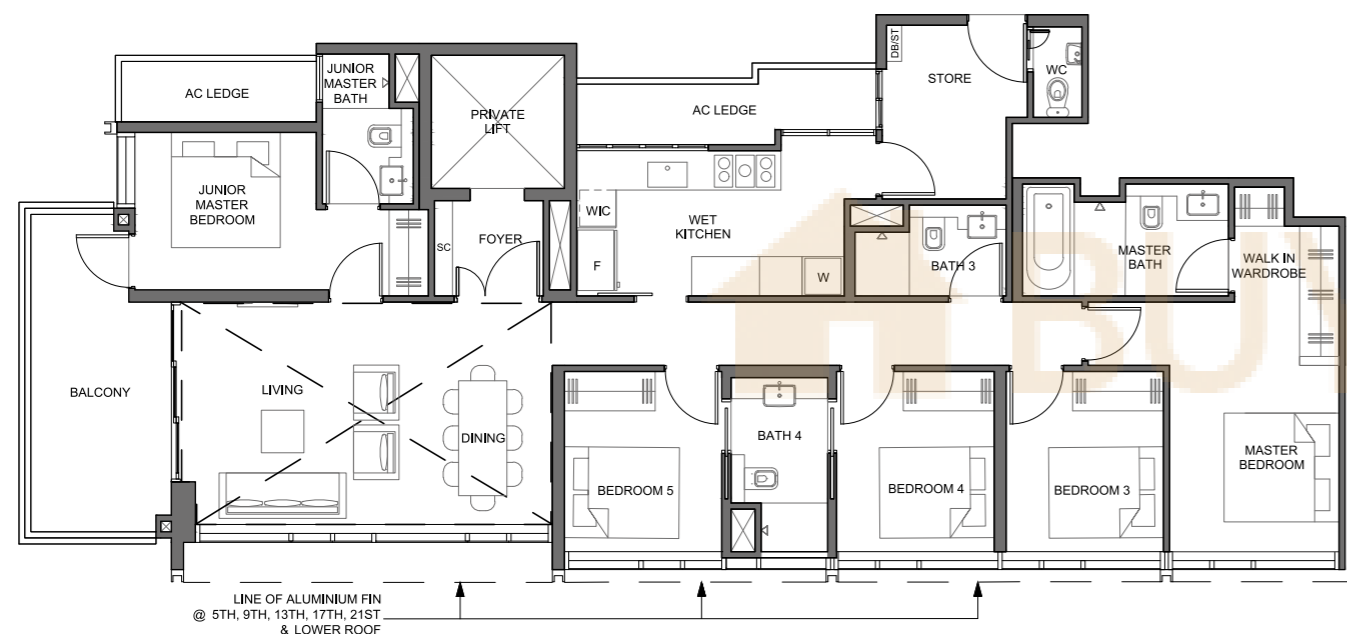
Block 6 #02-01 TO #23-01 (mirrored)

#02-02 TO #23-02

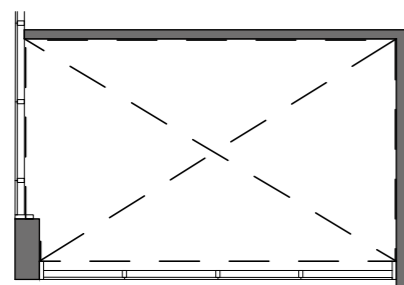
Block 6A #02-06 TO #23-06



Key plan is not drawn to scale



LINE OF ALUMINIUM FIN @ 5TH, 9TH, 13TH, 17TH, 21ST & LOWER ROOF



TYPE 5BR P2 - H

Area 184 sq m / (approx. 1981 sq ft)
(Inclusive of 13 sq m balcony,
9 sq m AC ledge & 25 sq m
high void)

Block 6 #24-01 (mirrored) & #24-02

Block 6A #24-06

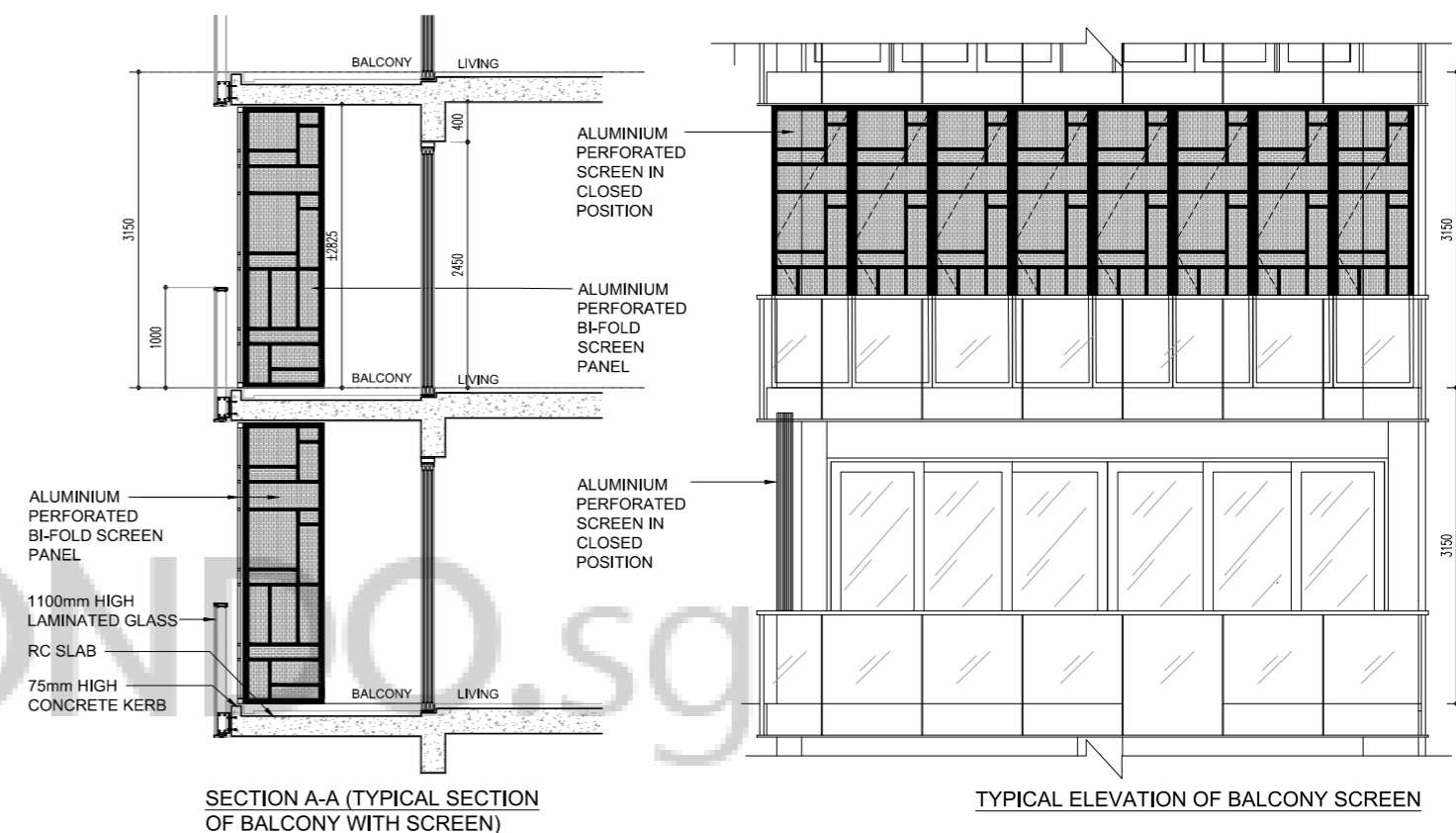


LEGEND:
F - Fridge DB - Distribution Board ST - Storage W - Washer & Dryer Only Applicable to High Void

U/CF - Under Counter Fridge WIC - Under Counter Wine Chiller

All plans are subjected as may be approved by relevant authorities. Floor areas are approximate measurements and are subjected to final survey. The balcony shall not be enclosed unless with the approved screen. For illustration of the approved balcony screen, please refer to Annexure 1 of this brochure.

ANNEXURE 1



BLK- 6 AND 6A

BALCONY SCREEN NOTICE

1. THE BALCONY SHALL NOT BE ENCLOSED UNLESS WITH THE APPROVED BALCONY SCREEN.
2. THE PURCHASER WILL HAVE TO BEAR THE COST OF INSTALLING THE BALCONY SCREEN IF THEY WISH TO, AFTER TAKING OVER THE UNIT.

THE PROPOSED BALCONY SHALL BE POROUS ENOUGH TO ALLOW FOR NATURAL VENTILATION WITHIN THE BALCONY AT ALL TIMES EVEN WHEN THE SCREENS ARE FULLY DRAWN CLOSED. THE PROPOSED BALCONY SCREEN SHALL ALSO BE CAPABLE OF BEING DRAWN OPEN OR RETRACTED FULLY.

BP NO.: A1716-00006-2018-BP01
BP APPROVAL DATE: 12 JUNE 2019

