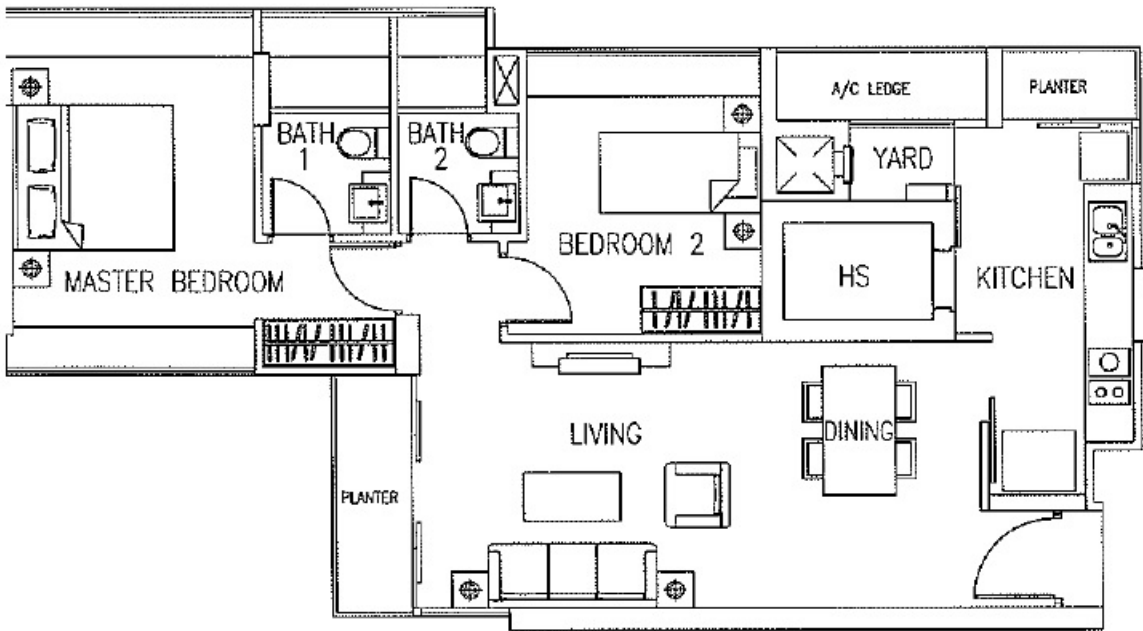
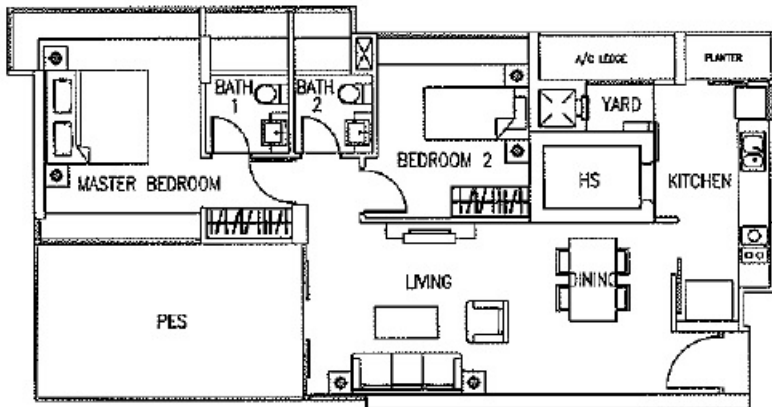


2 BEDROOMS



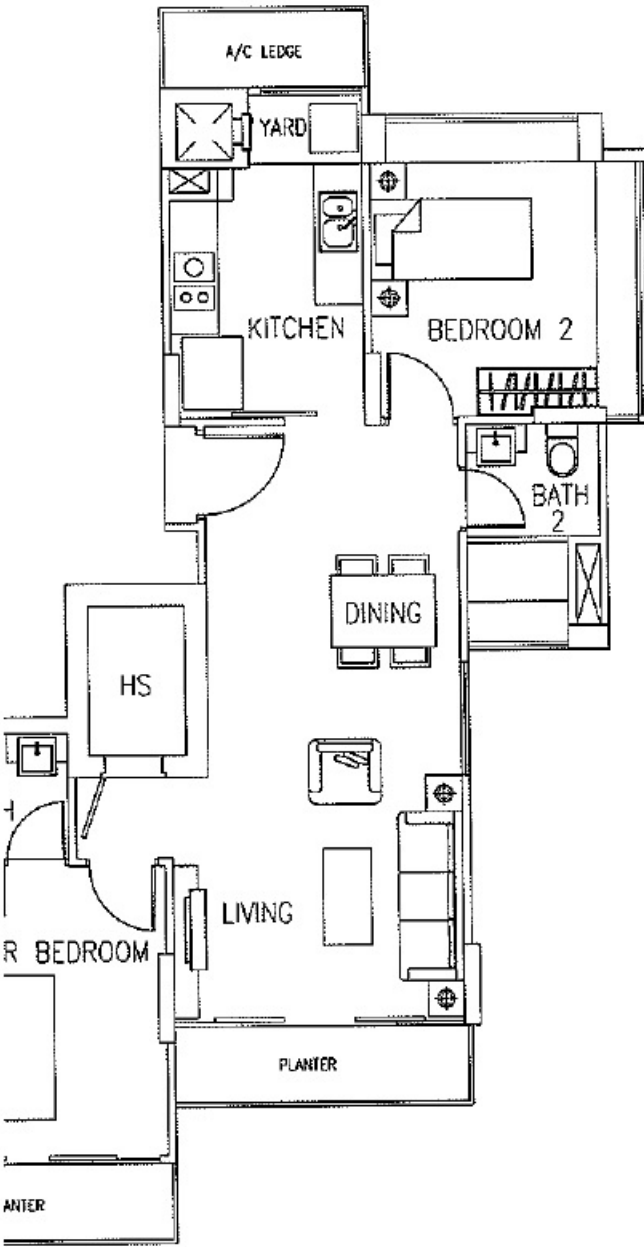
TYPE A1
87sqm / 936sqft



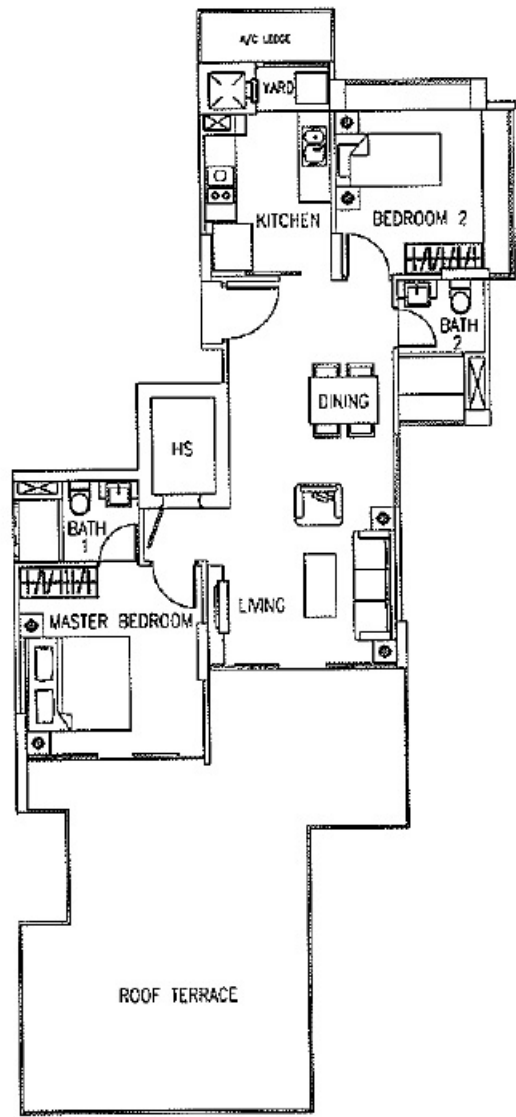
TYPE A1p
100sqm / 1,076sqft



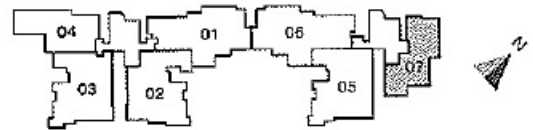
are subject to change as may be approved by the relevant authorities.
imate measurements and subject to final survey. Plans are not to scale.



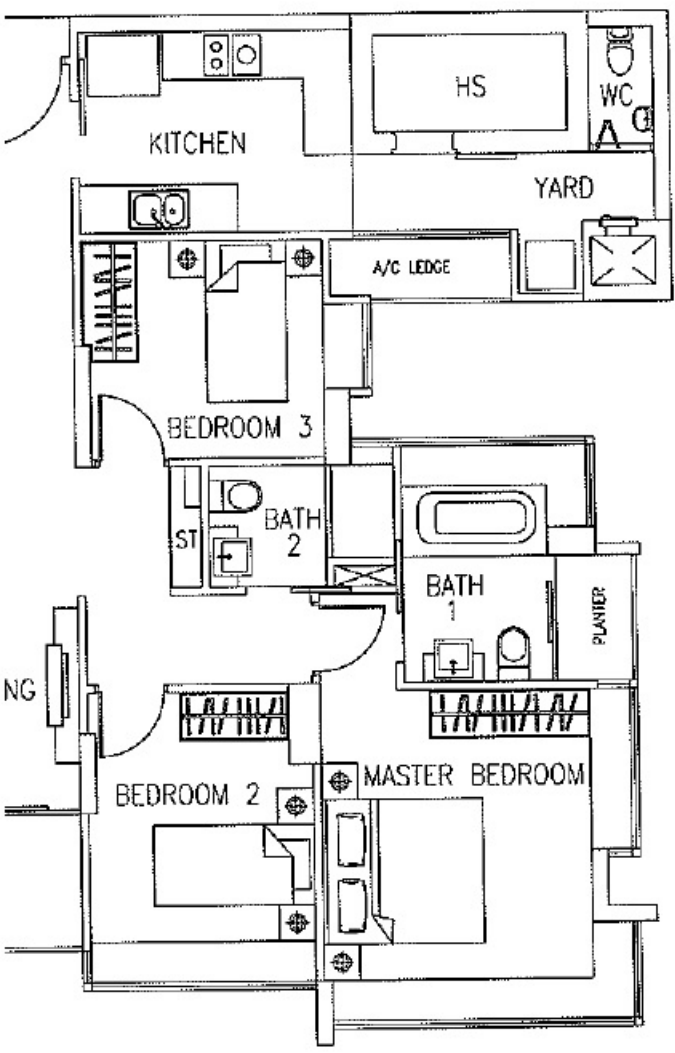
TYPE A2
84sqm / 904sqft



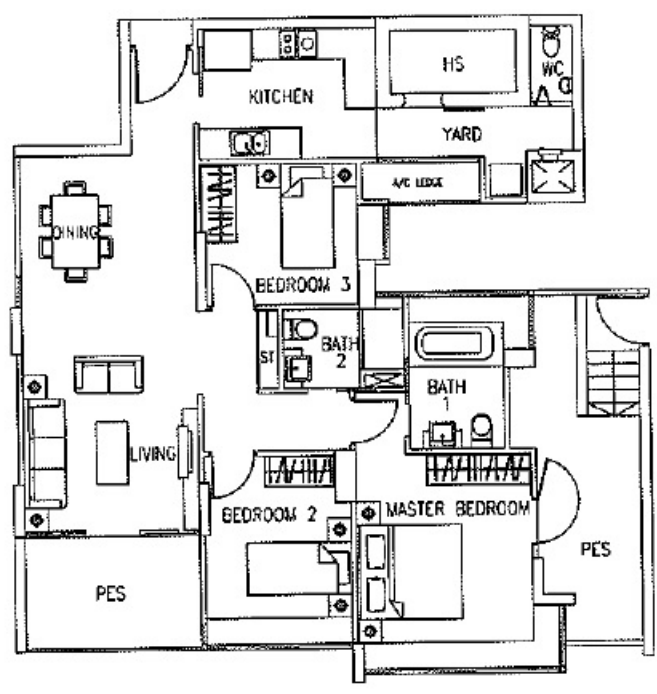
TYPE A2p
121sqm / 1,302sqft



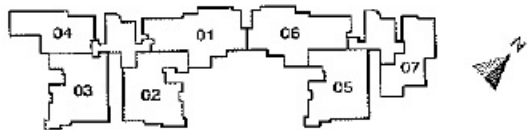
Plans are subject to change as may be approved by the relevant authorities. Approximate measurements and subject to final survey. Plans are not to scale.



TYPE B2
112sqm / 1,206sqft

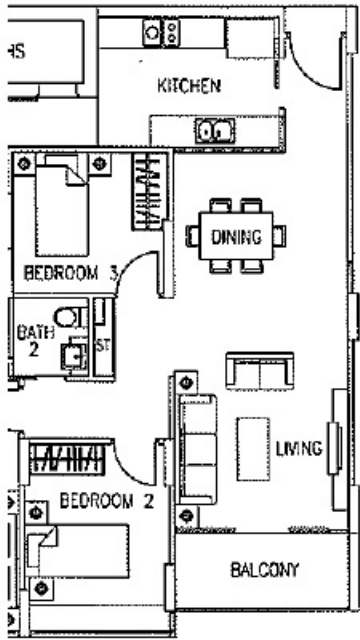


TYPE B2p
126sqm / 1,356sqft

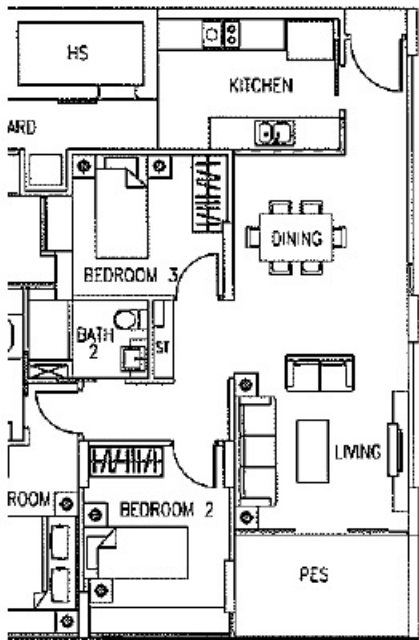


Plans are subject to change as may be approved by the relevant authorities. Approximate measurements and subject to final survey. Plans are not to scale

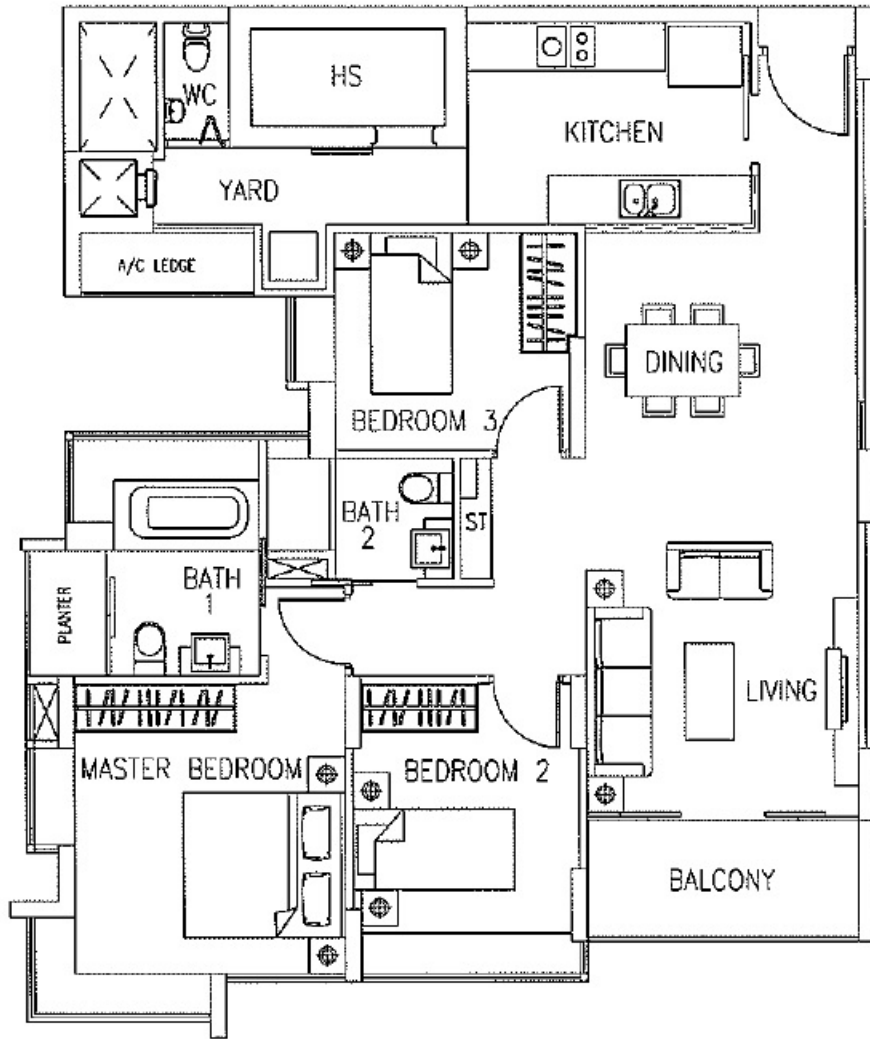
3 BEDROOMS



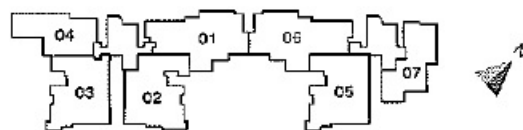
TYPE B3b
111sqm / 1,173sqft



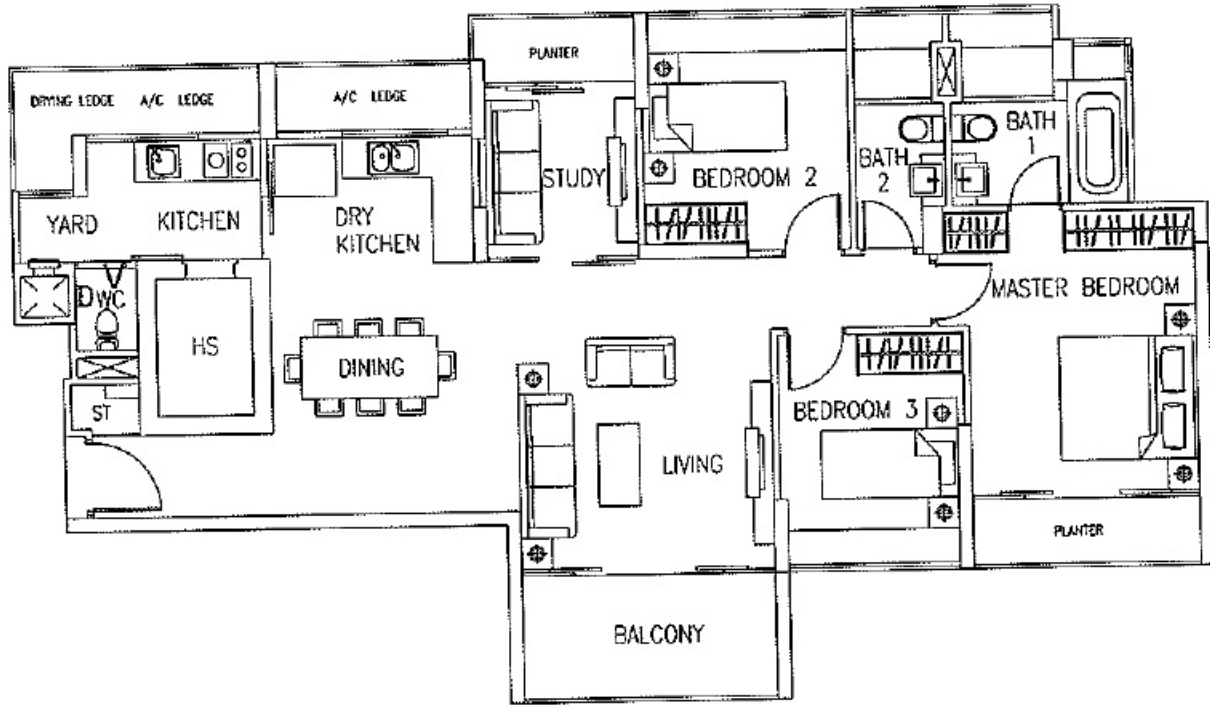
TYPE B3p
111sqm / 1,389sqft



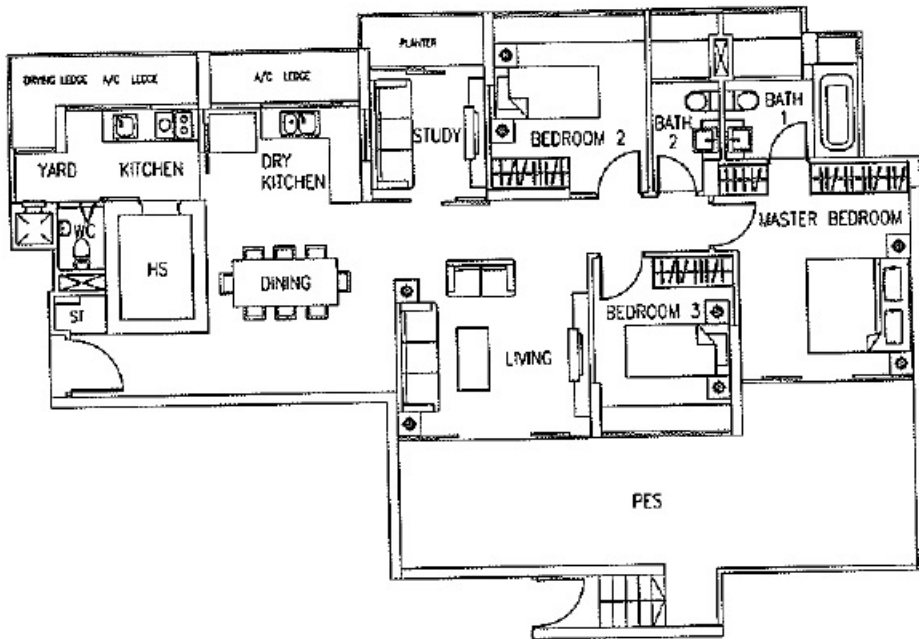
TYPE B3a
111sqm / 1,195sqft



Plans are subject to change as may be approved by the relevant authorities. All measurements are approximate and subject to final survey. Plans are not to scale.



TYPE C1 / TYPE C2*
130sqm / 1,399sqft

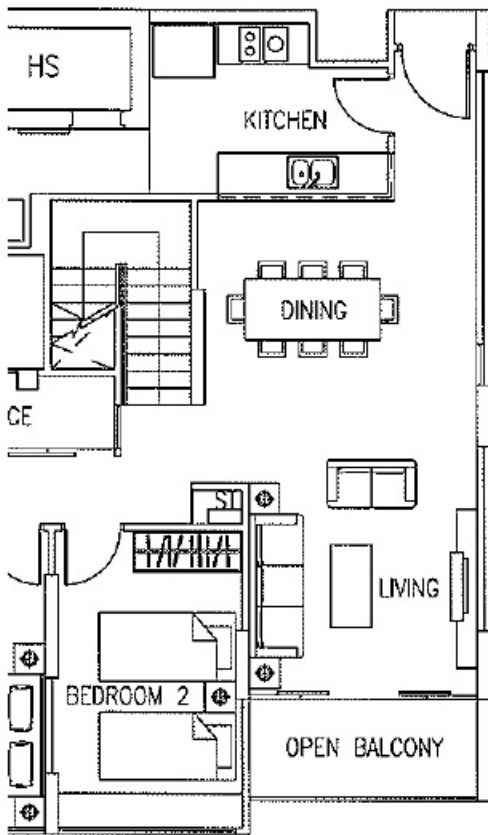


TYPE C1p / TYPE C2p*
154sqm / 1,658sqft

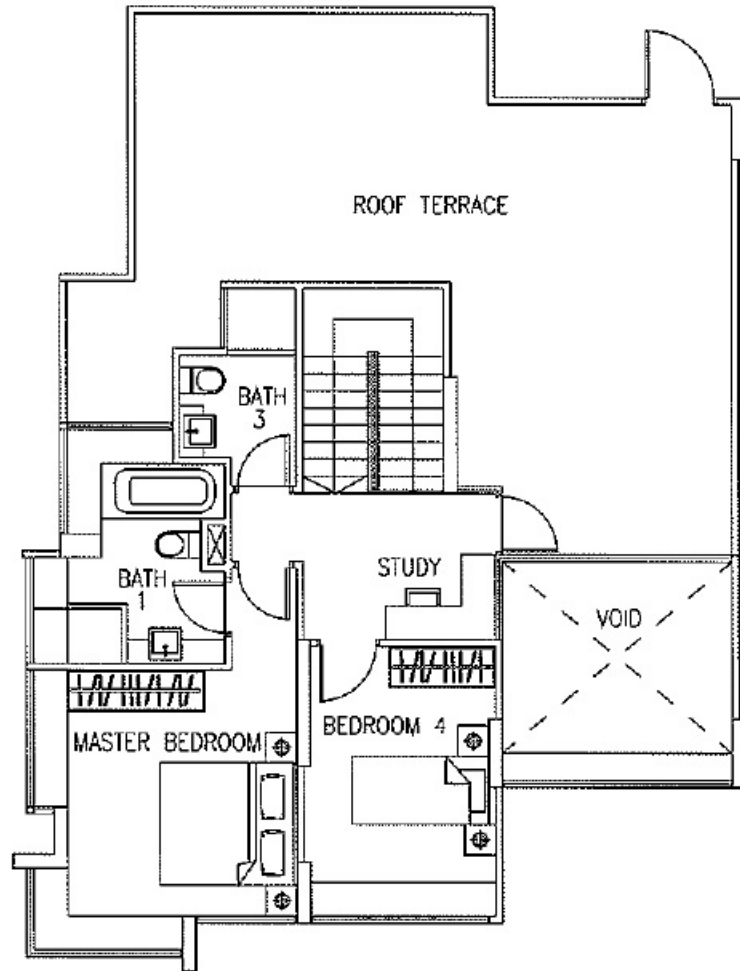


is mirror image of C1/C1p
plans are subject to change as may be approved by the relevant authorities.
approximate measurements and subject to final survey. Plans are not to scale.

PENTHOUSE



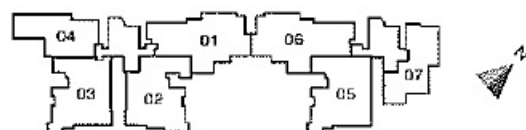
Lower

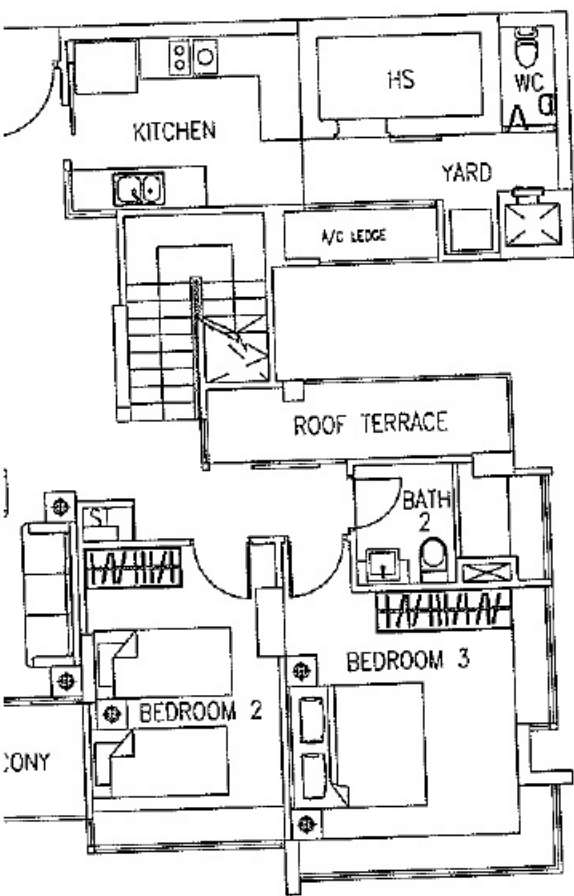


Upper

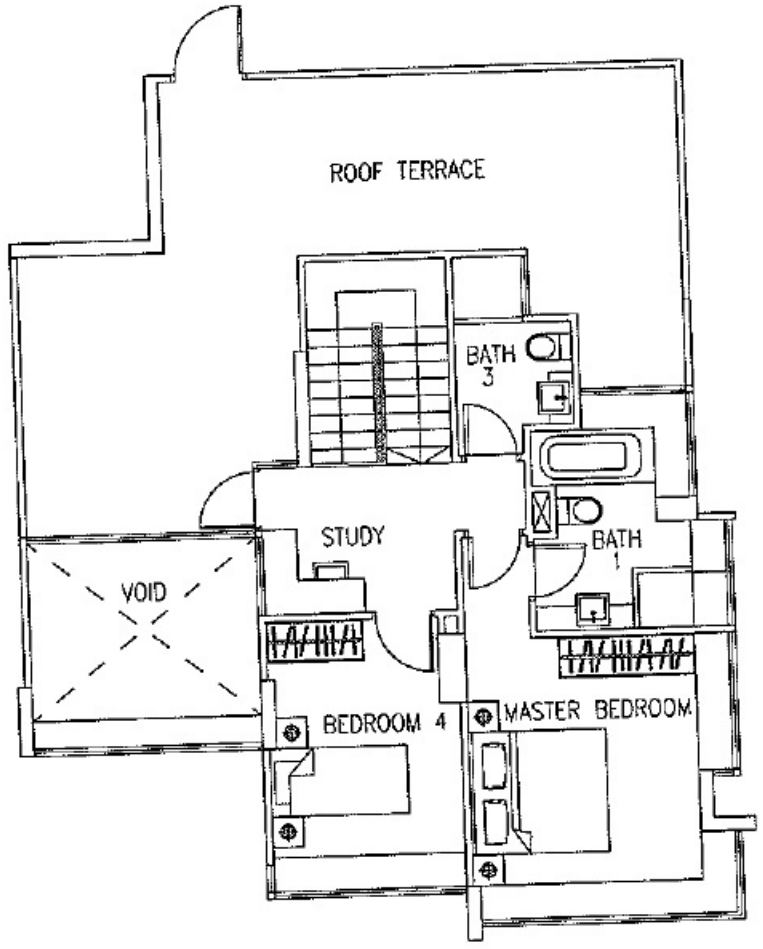
TYPE P1
221sqm / 2,379sqft

are subject to change as may be approved by the relevant authorities
mate measurements and subject to final survey. Plans are not to scale.



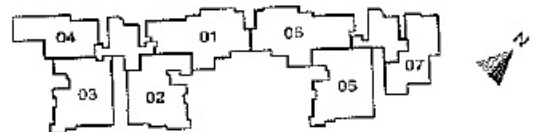


Lower



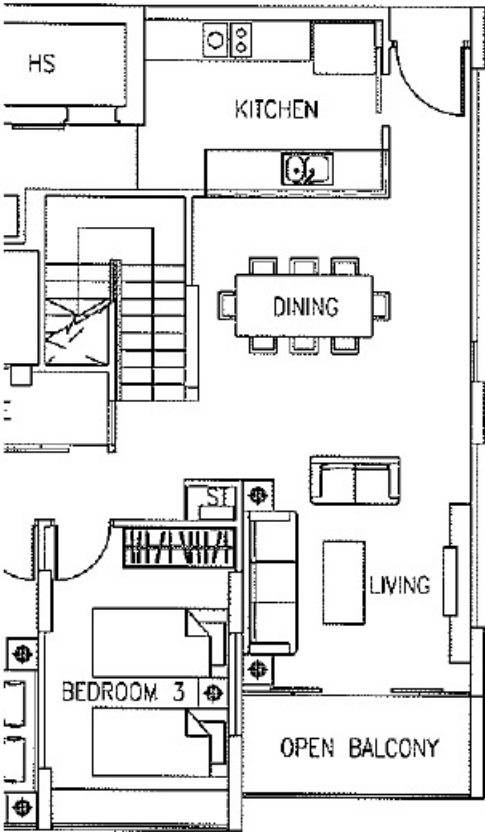
Upper

TYPE P2
214sqm / 2,303sqft

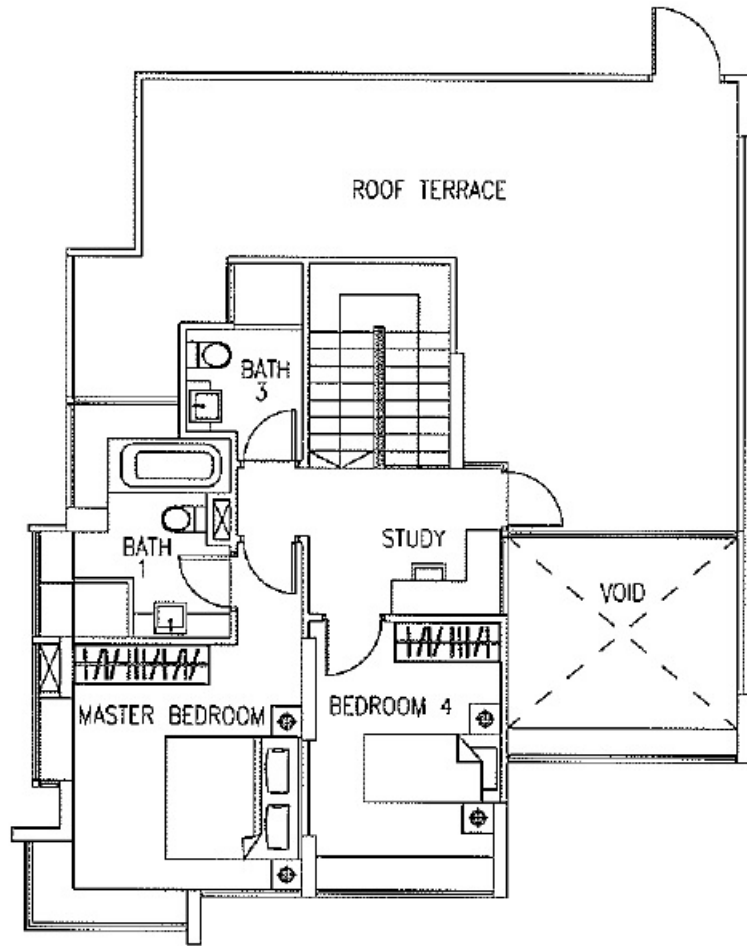


These plans are subject to change as may be approved by the relevant authorities. Measurements are approximate and subject to final survey. Plans are not to scale.

PENTHOUSE

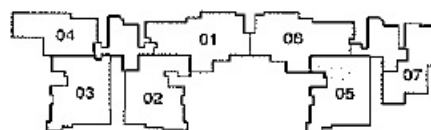


Lower

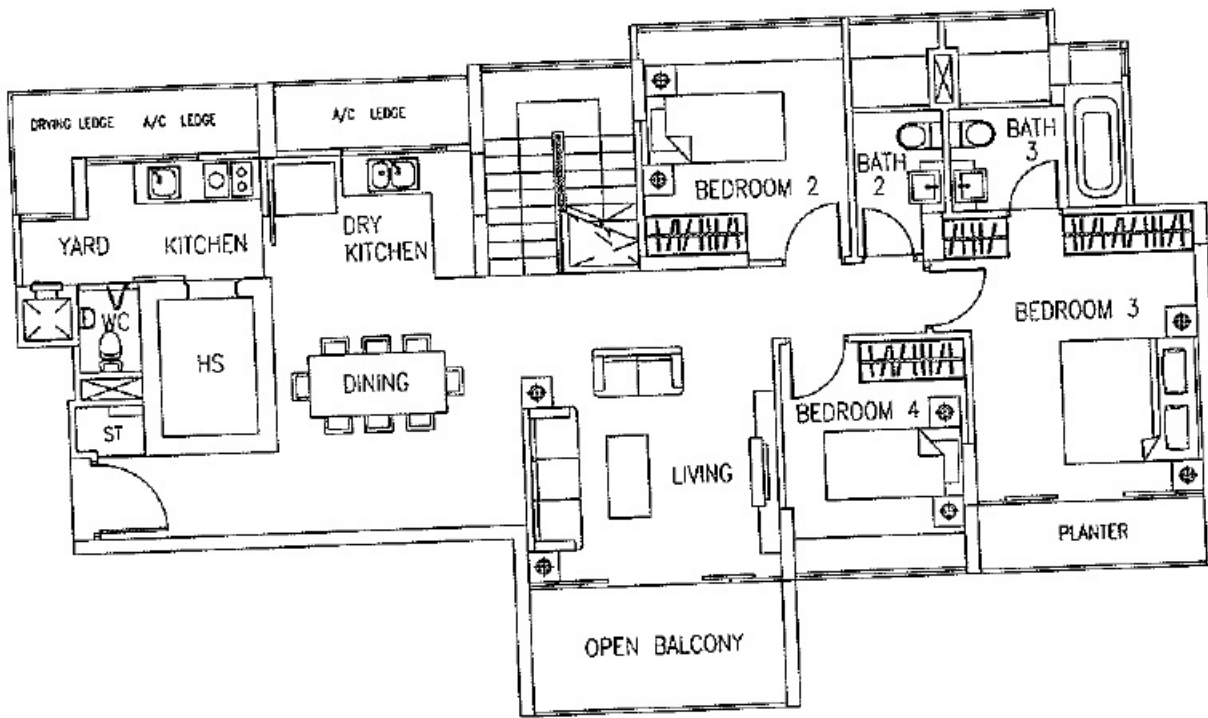


Upper

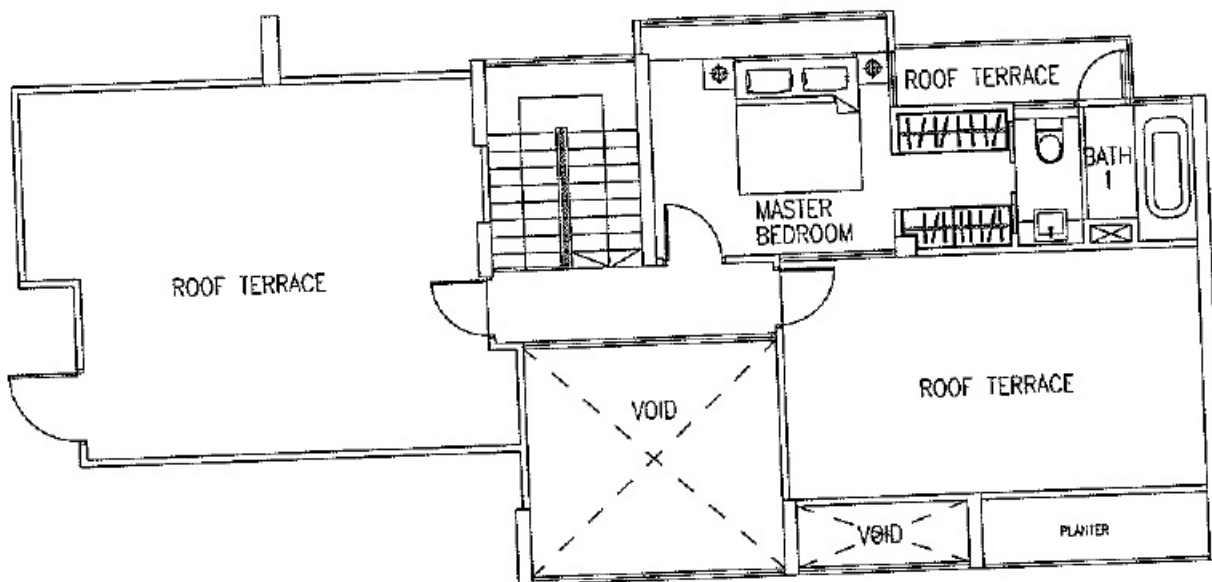
TYPE P3
214sqm / 2,303sqft



subject to change as may be approved by the relevant authorities
site measurements and subject to final survey. Plans are not to scale

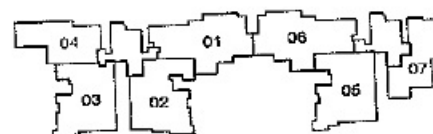


Lower



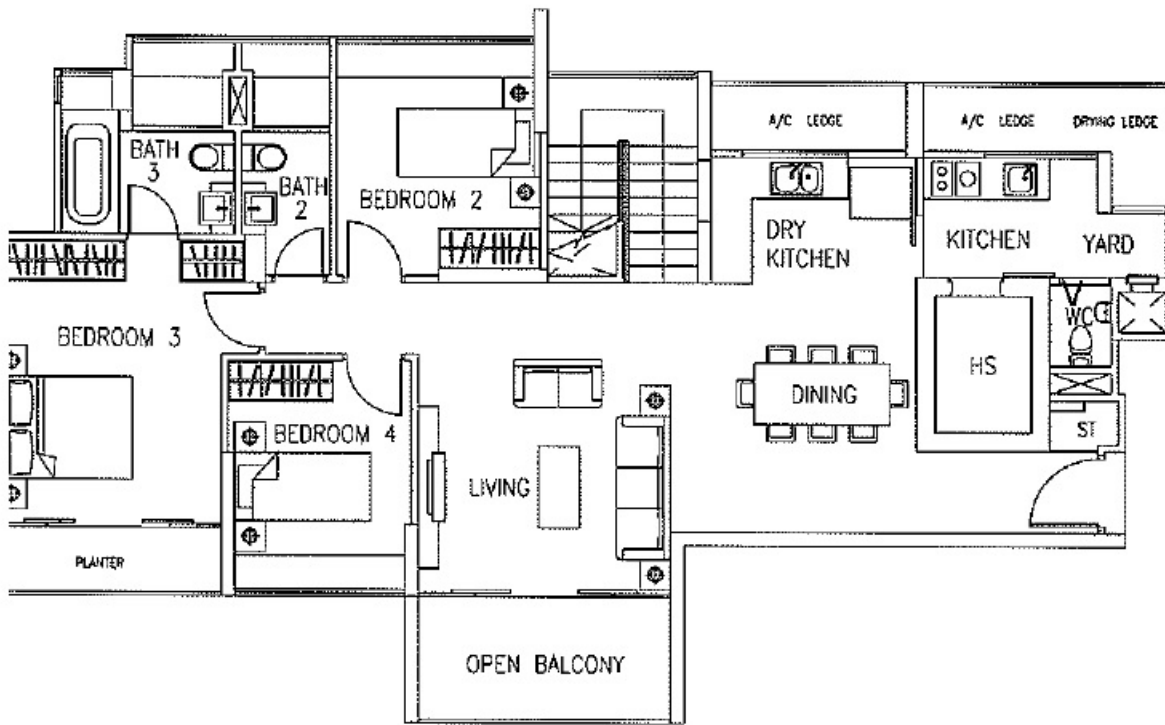
Upper

TYPE P4
234sqm / 2,519sqft

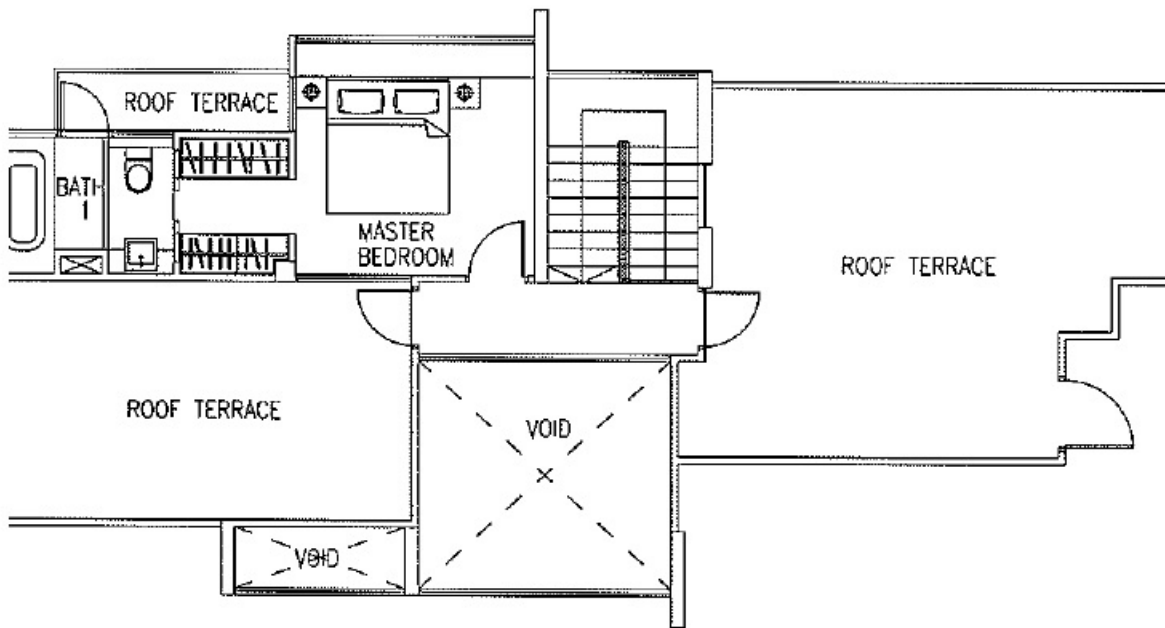


The above plans are subject to change as may be approved by the relevant authorities. Measurements are approximate measurements and subject to final survey. Plans are not to scale.

PENTHOUSE

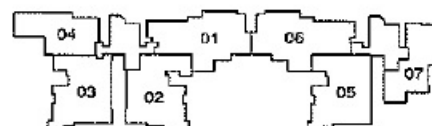


Lower



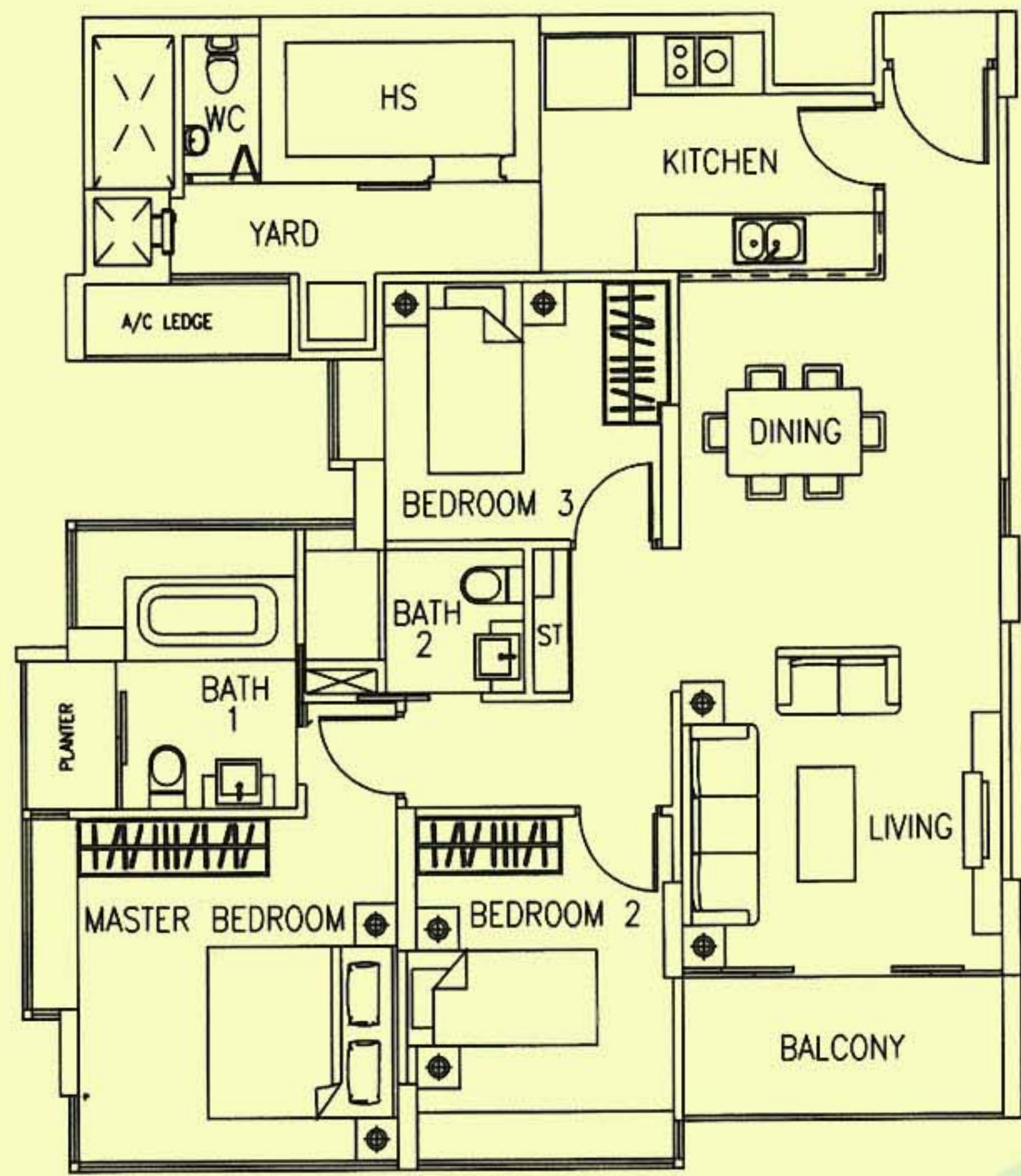
Upper

TYPE P5
229sqm / 2,465sqft

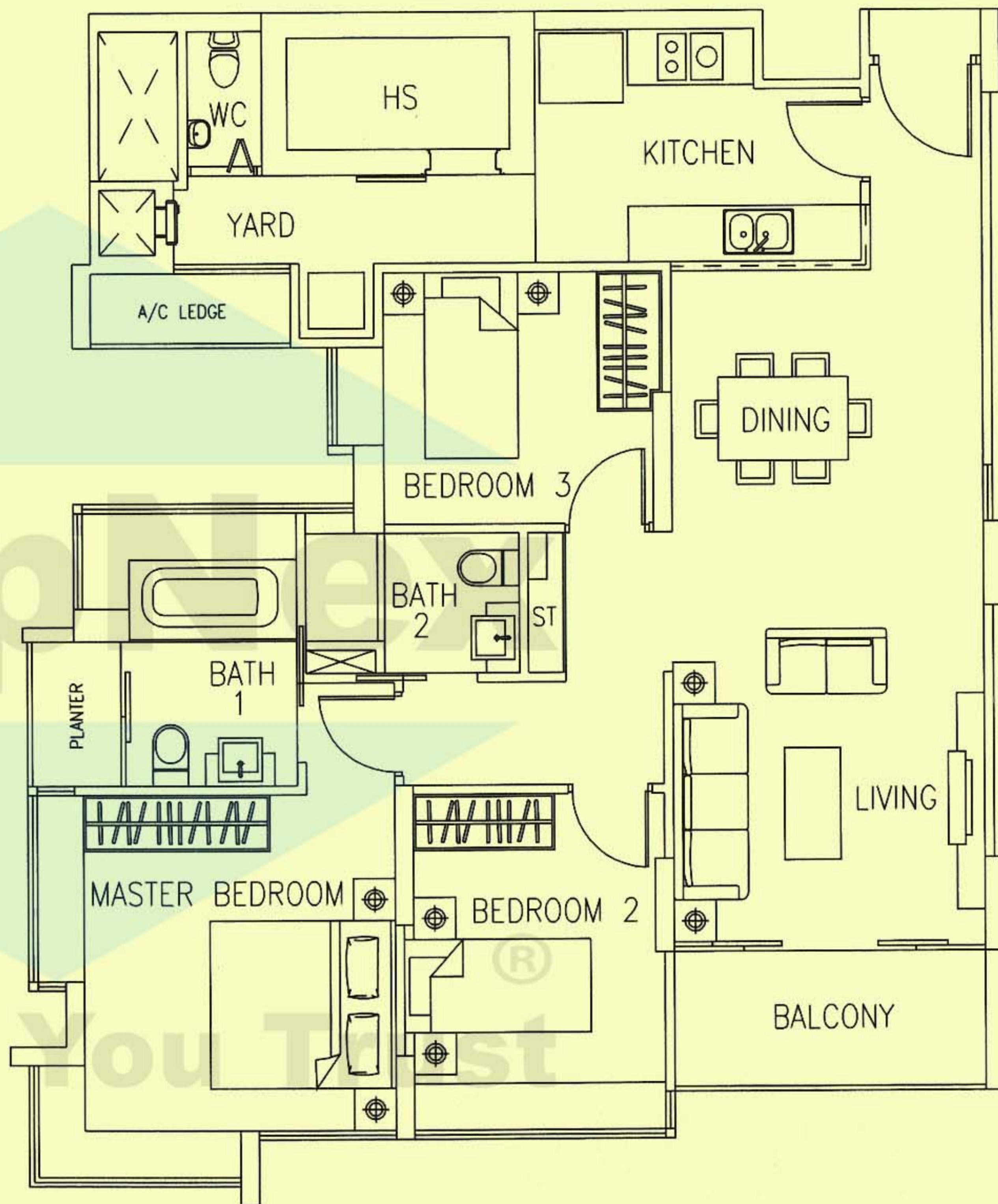


are subject to change as may be approved by the relevant authorities.
mate measurements and subject to final survey. Plans are not to scale

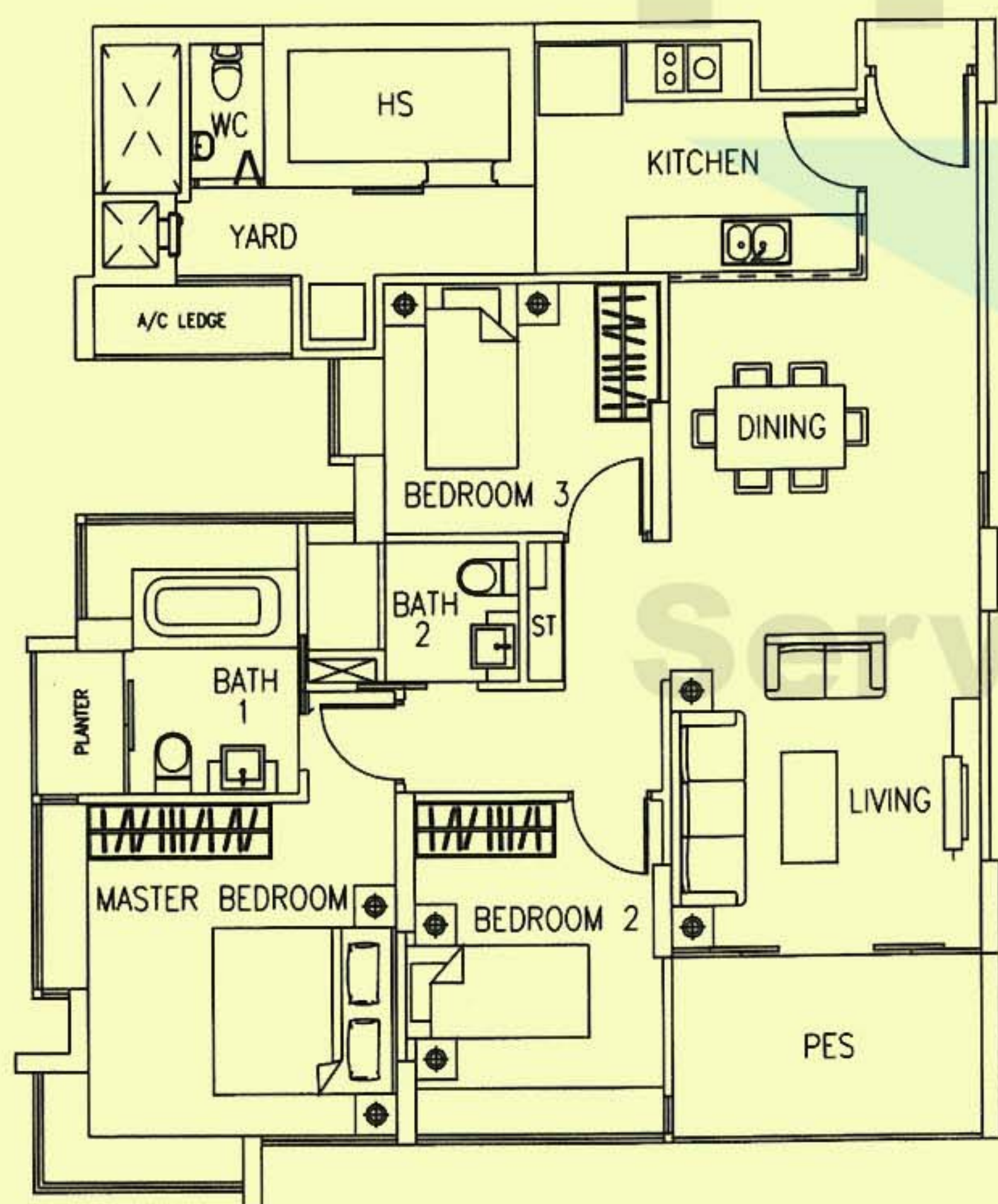
3 BEDROOMS



TYPE B1b
109sqm / 1,173sqft



TYPE B1a
110sqm / 1,184sqft



TYPE B1p
112sqm / 1,206sqft

The above plans are subject to change as may be approved by the relevant authorities.
Areas are approximate measurements and subject to final survey. Plans are not to scale.

