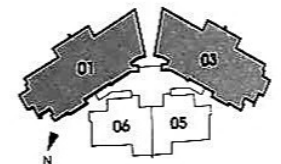
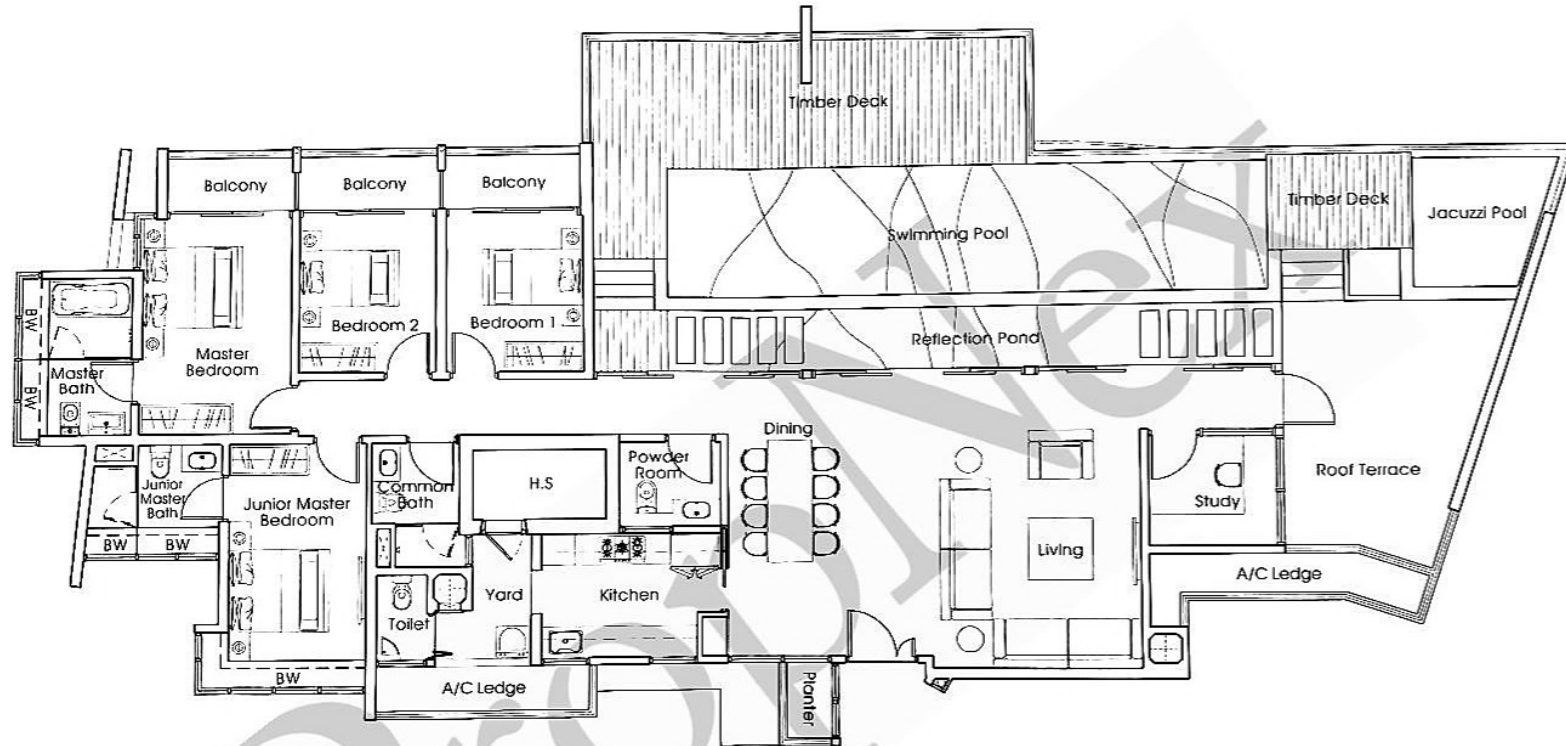


Type DP (4+1-Bedroom Penthouse)

Unit #19-01 & #19-03

Area 3035 sq ft / 282 sq m

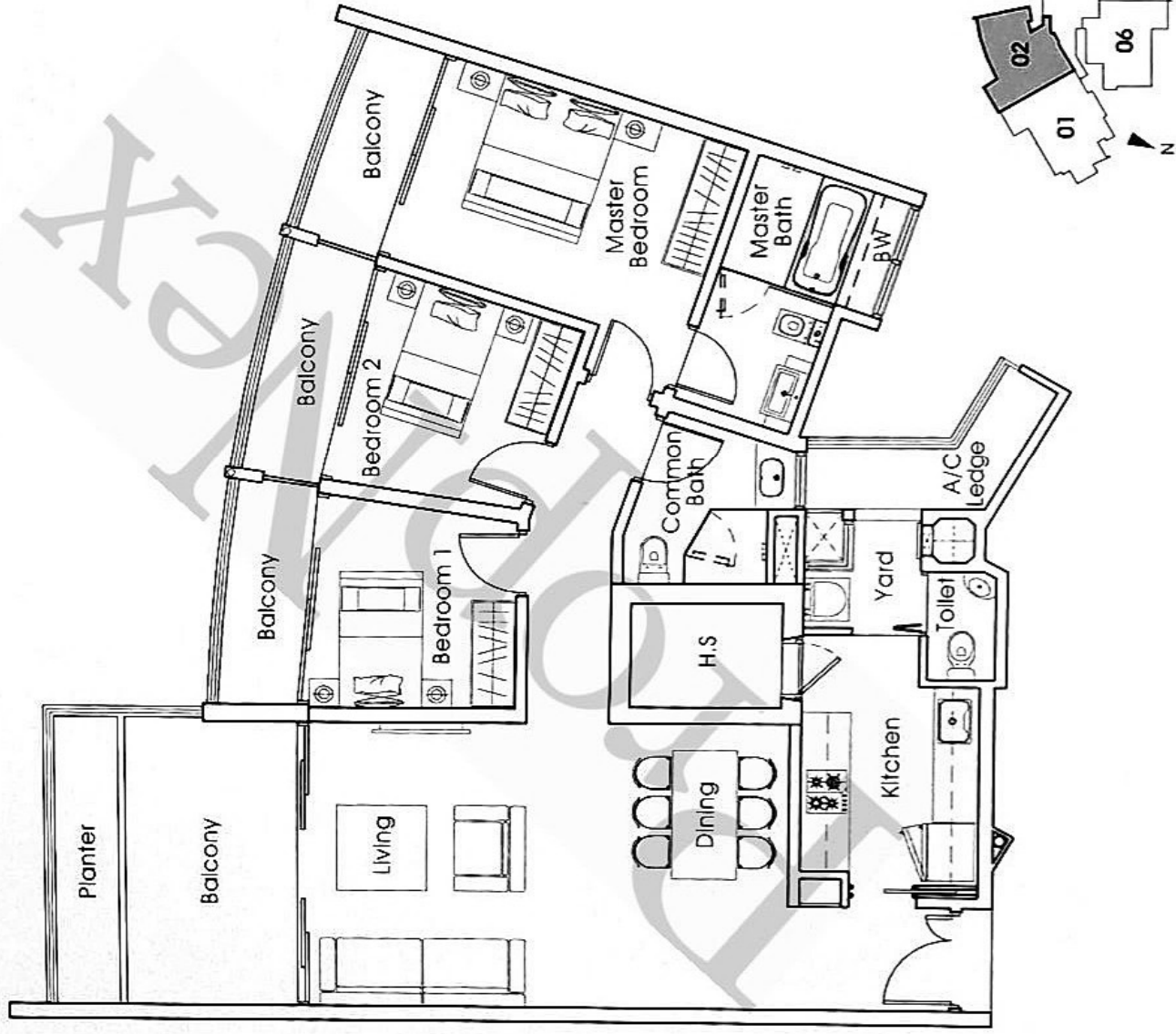
(Inclusive of planter box, a/c ledge, bay window (BW), balcony, pool & pool deck)



**Type A1 (3-Bedroom)**

Unit #15-02 to #18-02 & #15-03 to #18-03

Area 1378 sq ft / 128 sq m  
(Inclusive of planter box, a/c ledge, bay window (BW) & balcony)

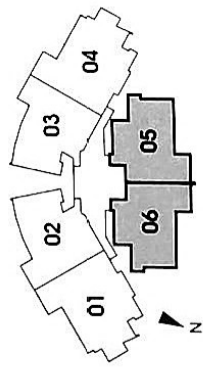
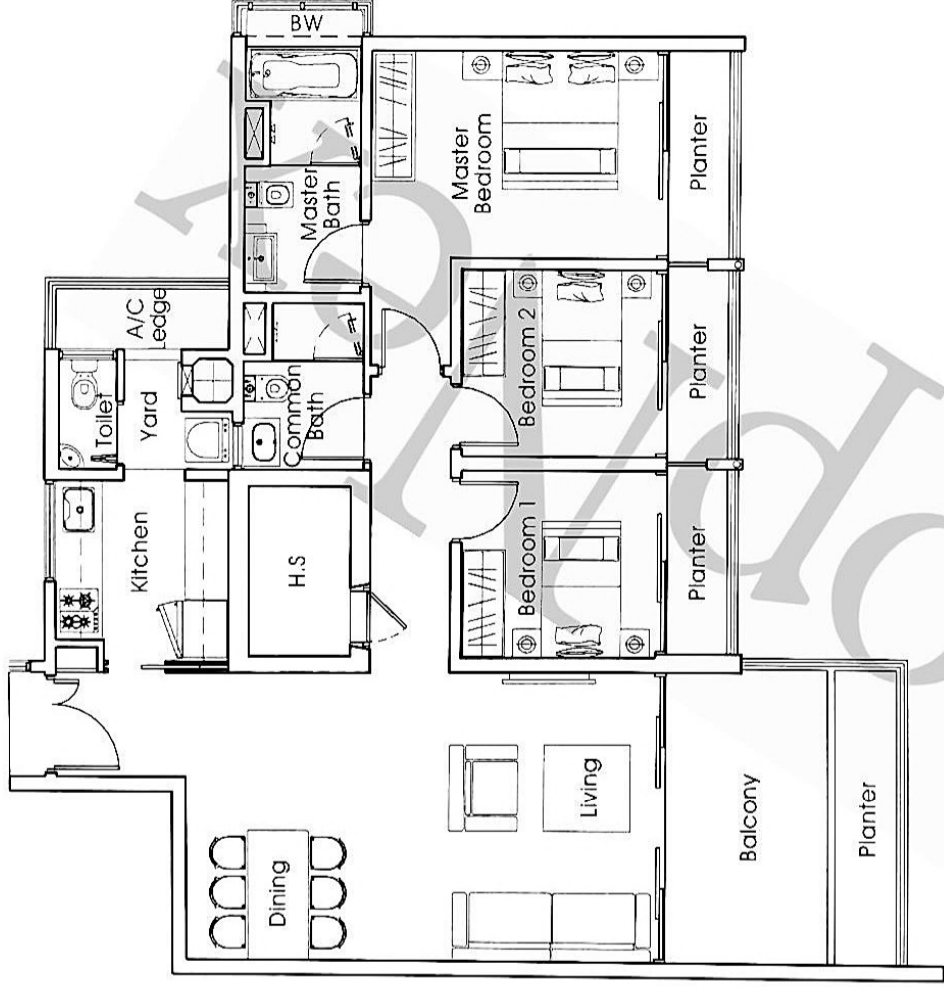


All plans are subject to amendments as approved by the relevant authorities. Floor areas are approximate measurements and subject to final survey.

### Type A2 (3-Bedroom)

Unit #05-05 to #13-05 & #15-05 to #18-05  
#05-06 to #13-06 & #15-06 to #18-06

Area 1292 sq ft / 120 sq m  
(Inclusive of planter box, a/c ledge, bay window (BW) & balcony)

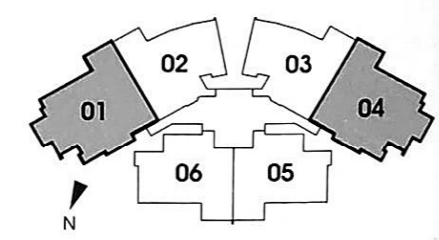
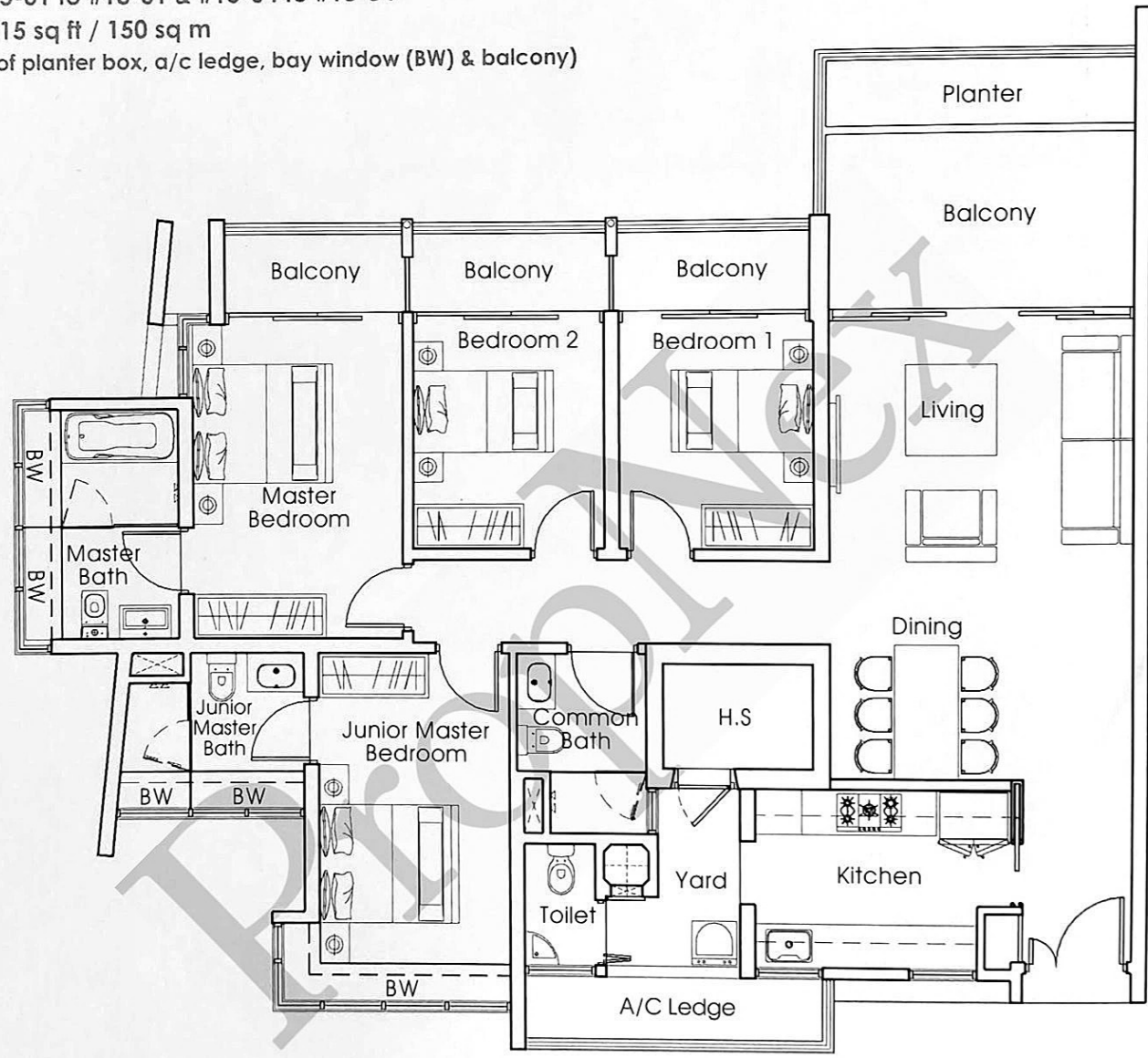


# Type B1 (4-Bedroom)

Unit #15-01 to #18-01 & #15-04 to #18-04

Area 1615 sq ft / 150 sq m

(Inclusive of planter box, a/c ledge, bay window (BW) & balcony)



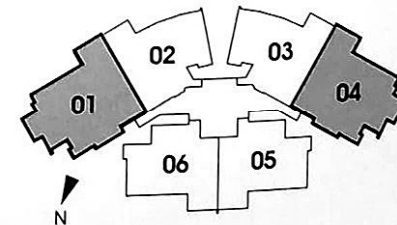
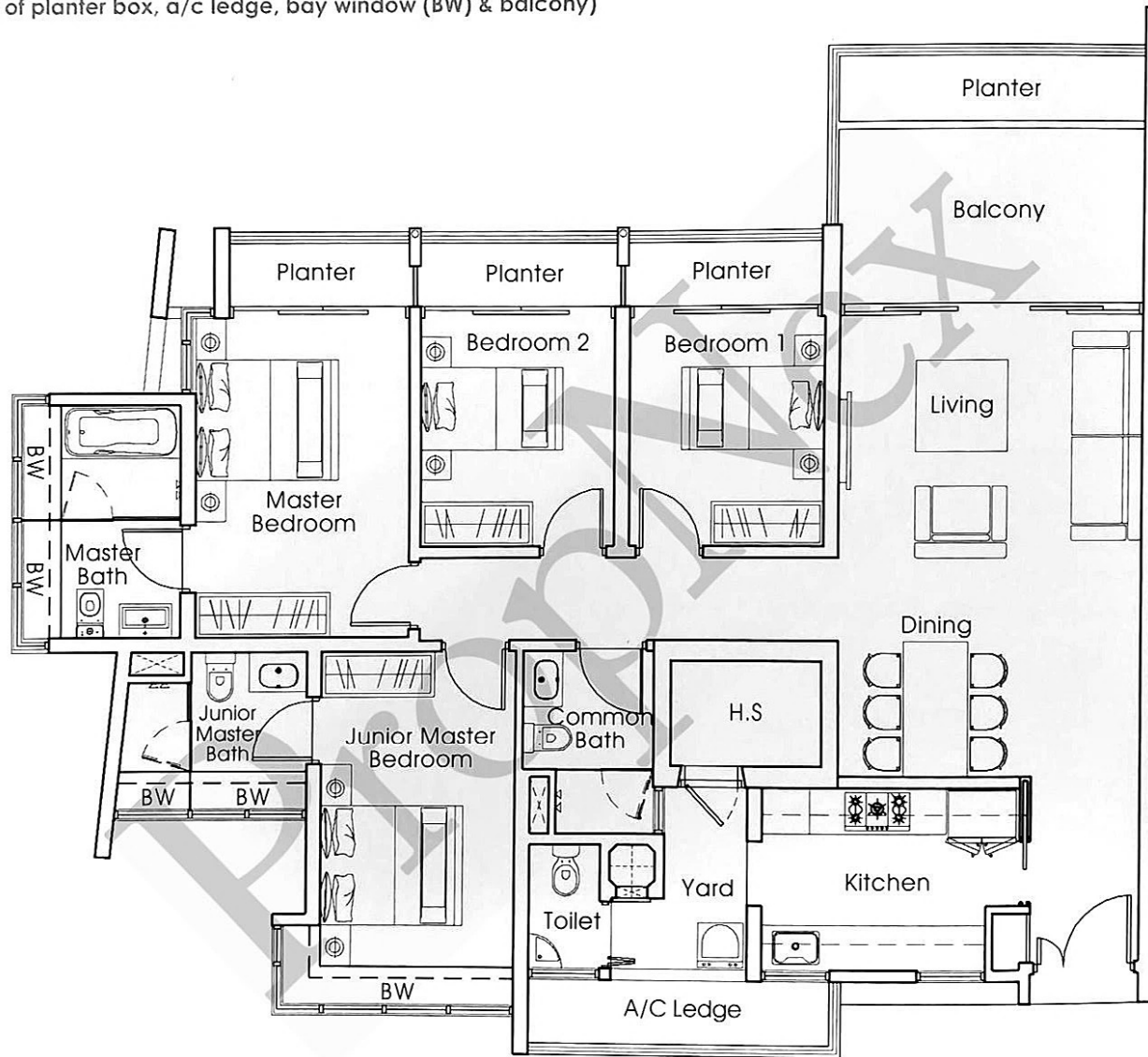
All plans are subject to amendments as approved by the relevant authorities. Floor areas are approximate measurements and subject to final survey.

# Type B (4-Bedroom)

Unit #02-01 to #13-01 & #02-04 to #13-04

Area 1593 sq ft / 148 sq m

(Inclusive of planter box, a/c ledge, bay window (BW) & balcony)



# Type B1 (4-Bedroom)

### Type CP (3+1-Bedroom Penthouse)

Unit #19-05 & #19-06

Area 2562 sq ft / 238 sq m

(Inclusive of planter box, a/c ledge, bay window (BW), balcony, pool & pool deck)

