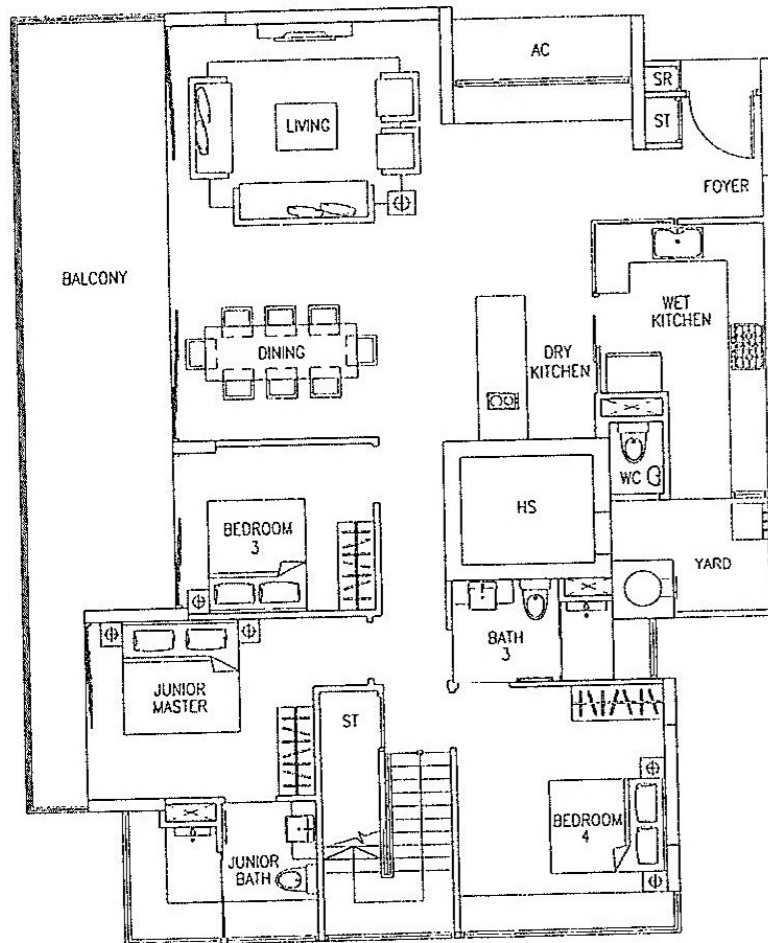


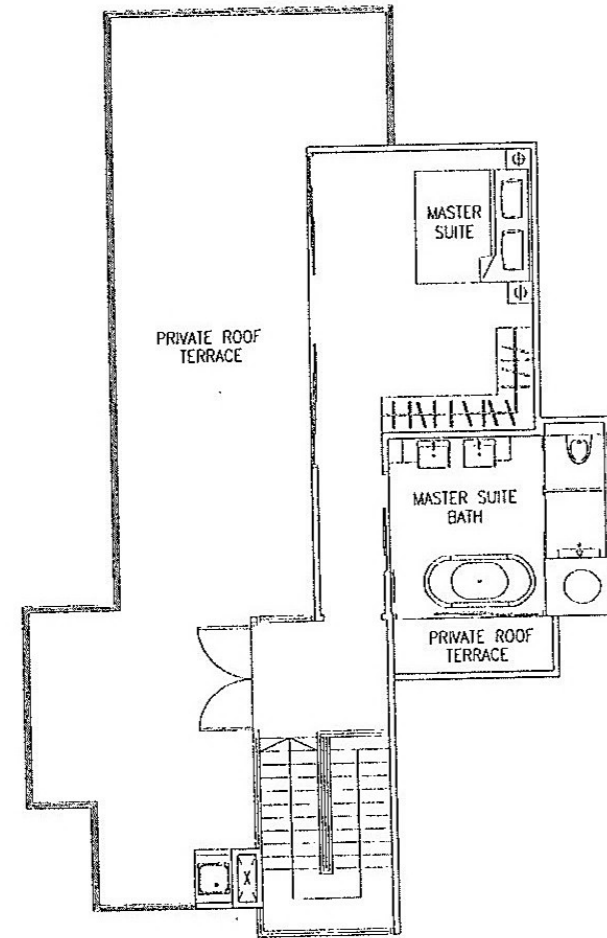
# TYPE PH6a

4-Bedroom Penthouse  
272 sq m / 2928 sq ft

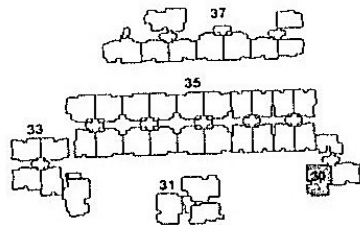
Block 35  
#05-30



Lower Storey



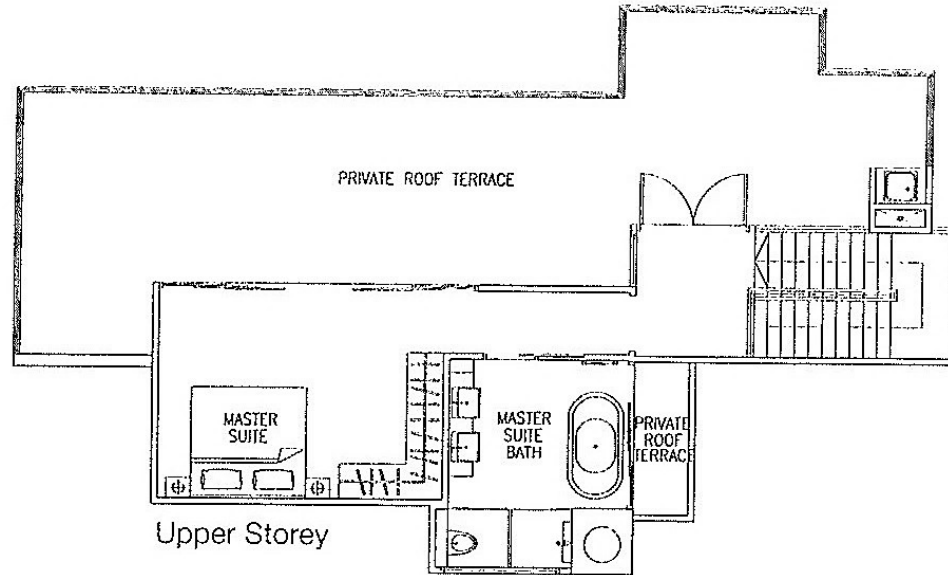
Upper Storey



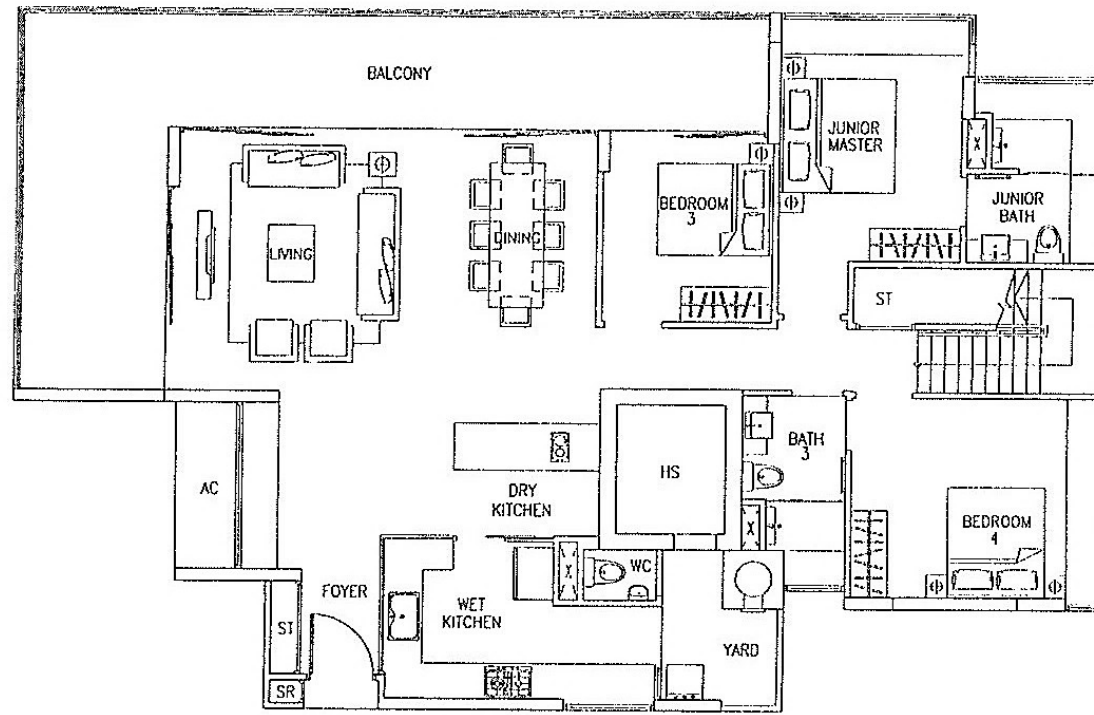
# TYPE PH6b

4-Bedroom Penthouse  
280 sq m / 3014 sq ft

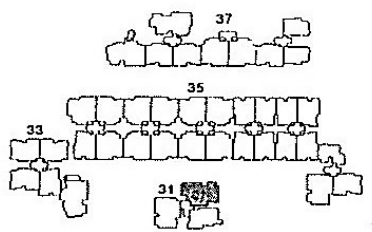
Block 31  
#06-01



Upper Storey



Lower Storey

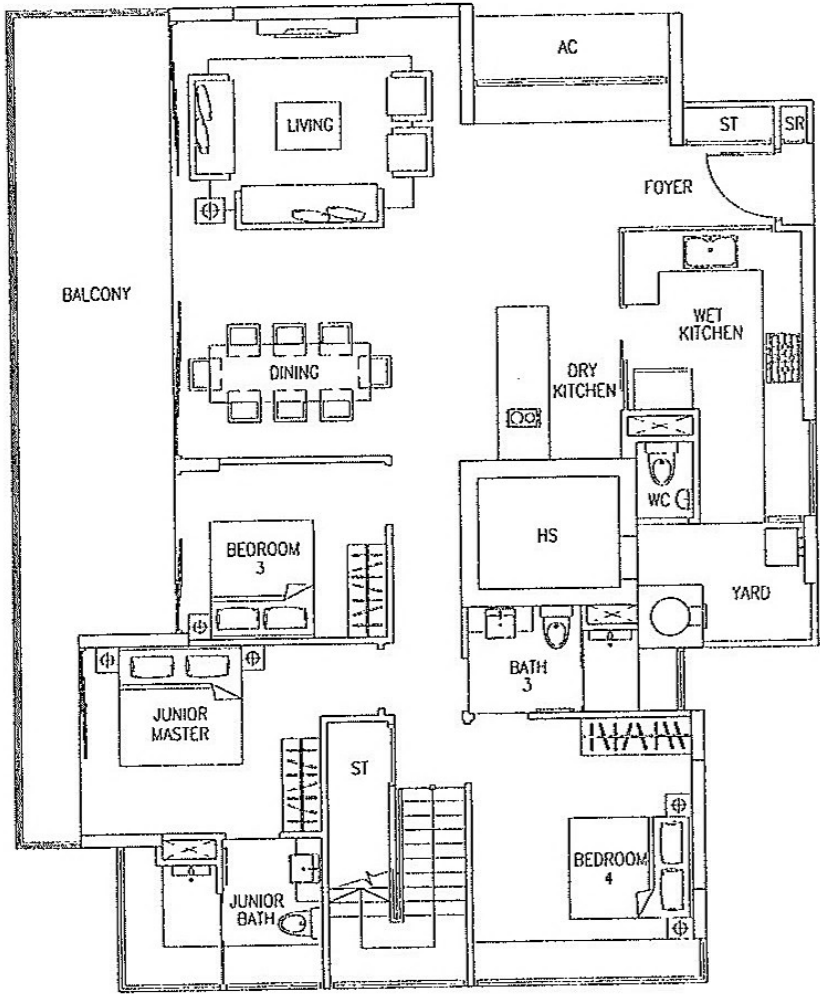


The above plans are subject to change as may be approved by the relevant authority. Areas are approximate measurements and subject to final survey. Plans are not to scale.

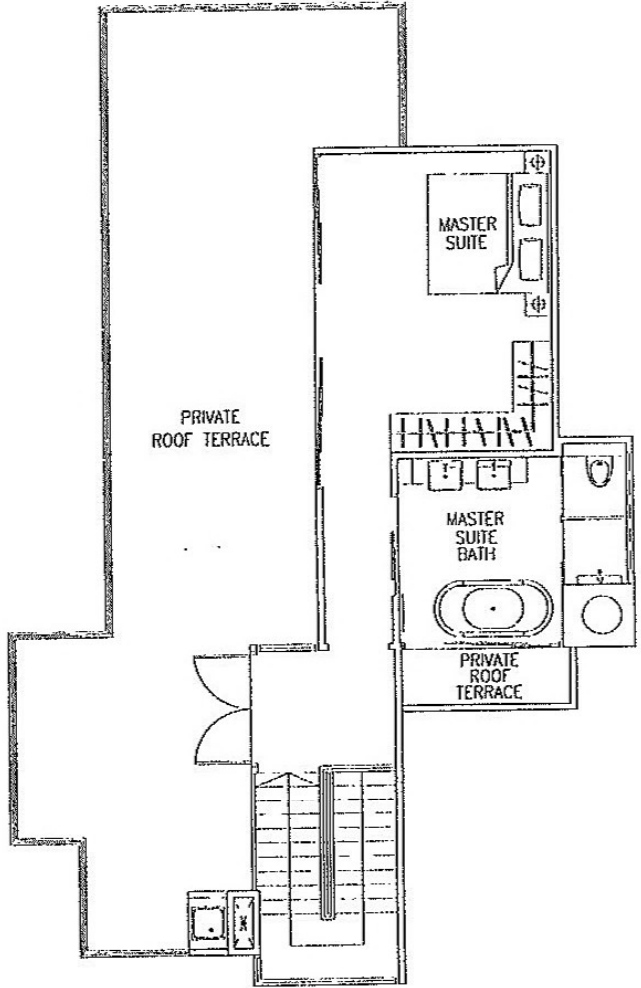
# TYPE PH6C

4-Bedroom Penthouse  
271 sq m / 2917 sq ft

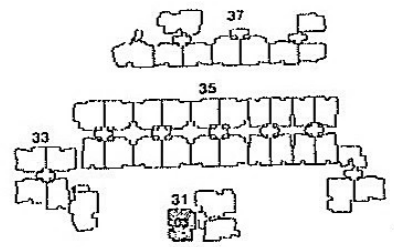
Block 31  
#06-03



Lower Storey



Upper Storey

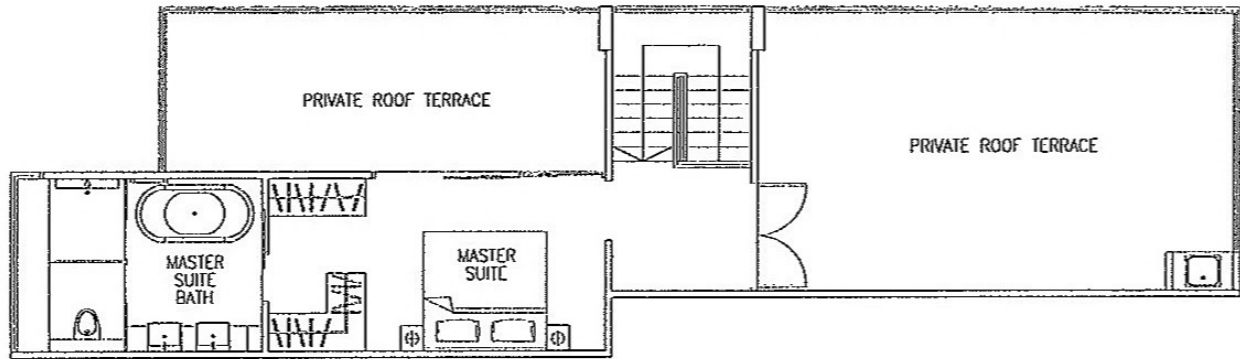


The above plans are subject to change as may be approved by the relevant authority. Areas are approximate measurements and subject to final survey. Plans are not to scale.

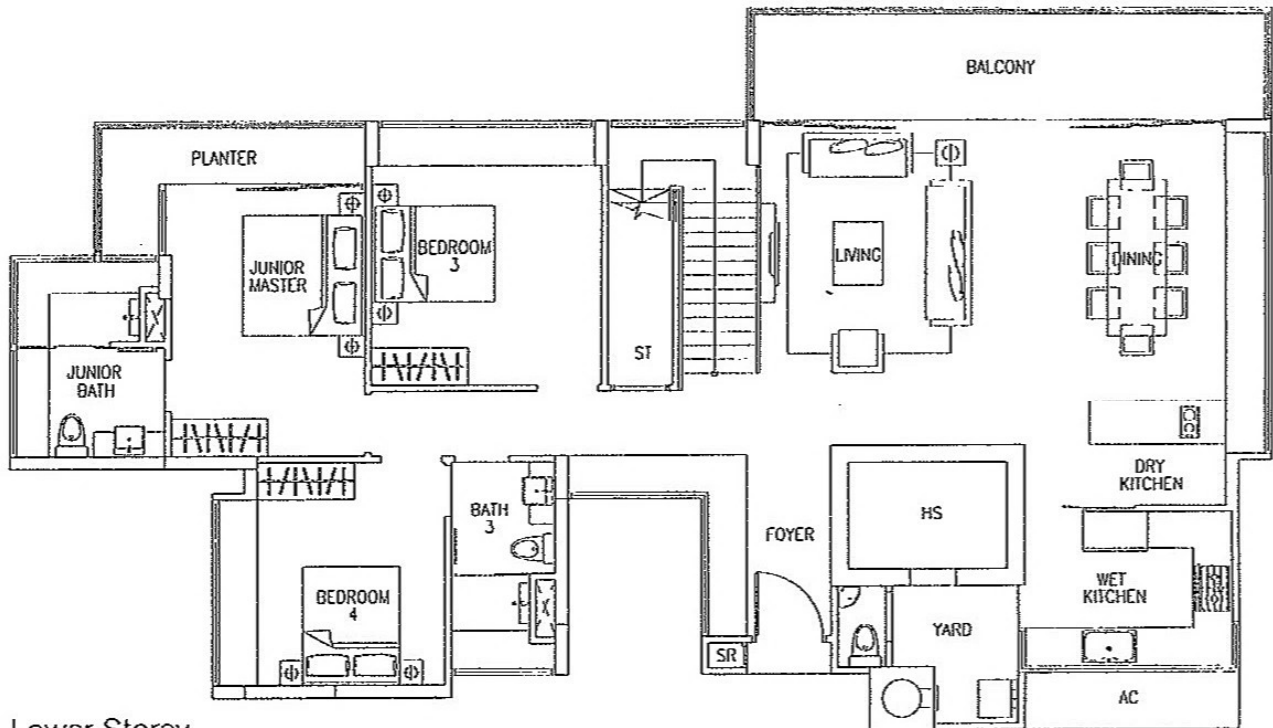
# TYPE PH7

4-Bedroom Penthouse  
257 sq m / 2766 sq ft

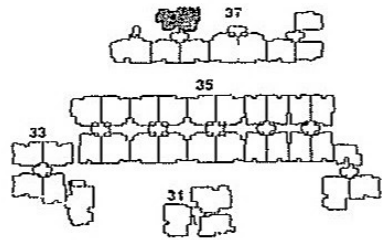
Block 37  
#06-35



Upper Storey



Lower Storey

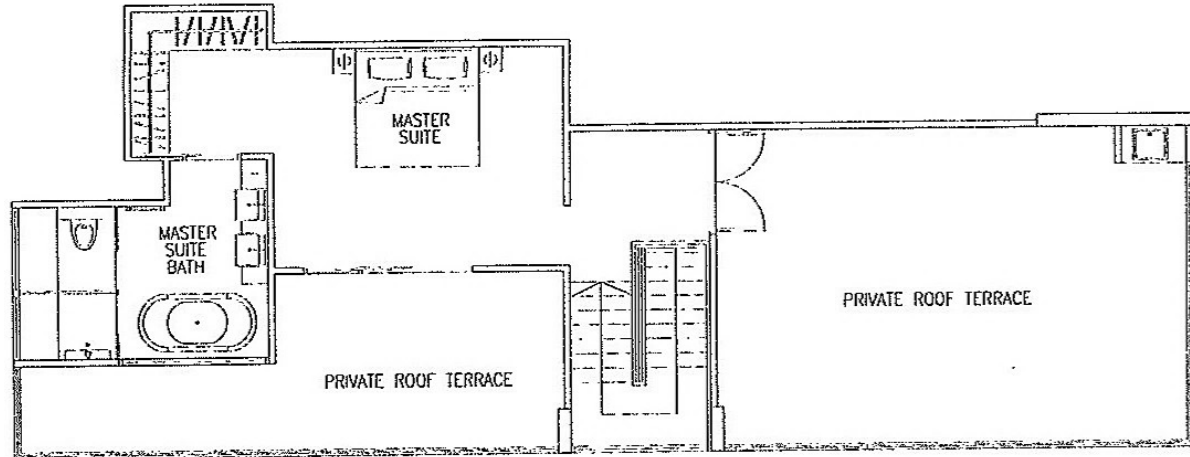


The above plans are subject to change as may be approved by the relevant authority. Areas are approximate measurements and subject to final survey. Plans are not to scale.

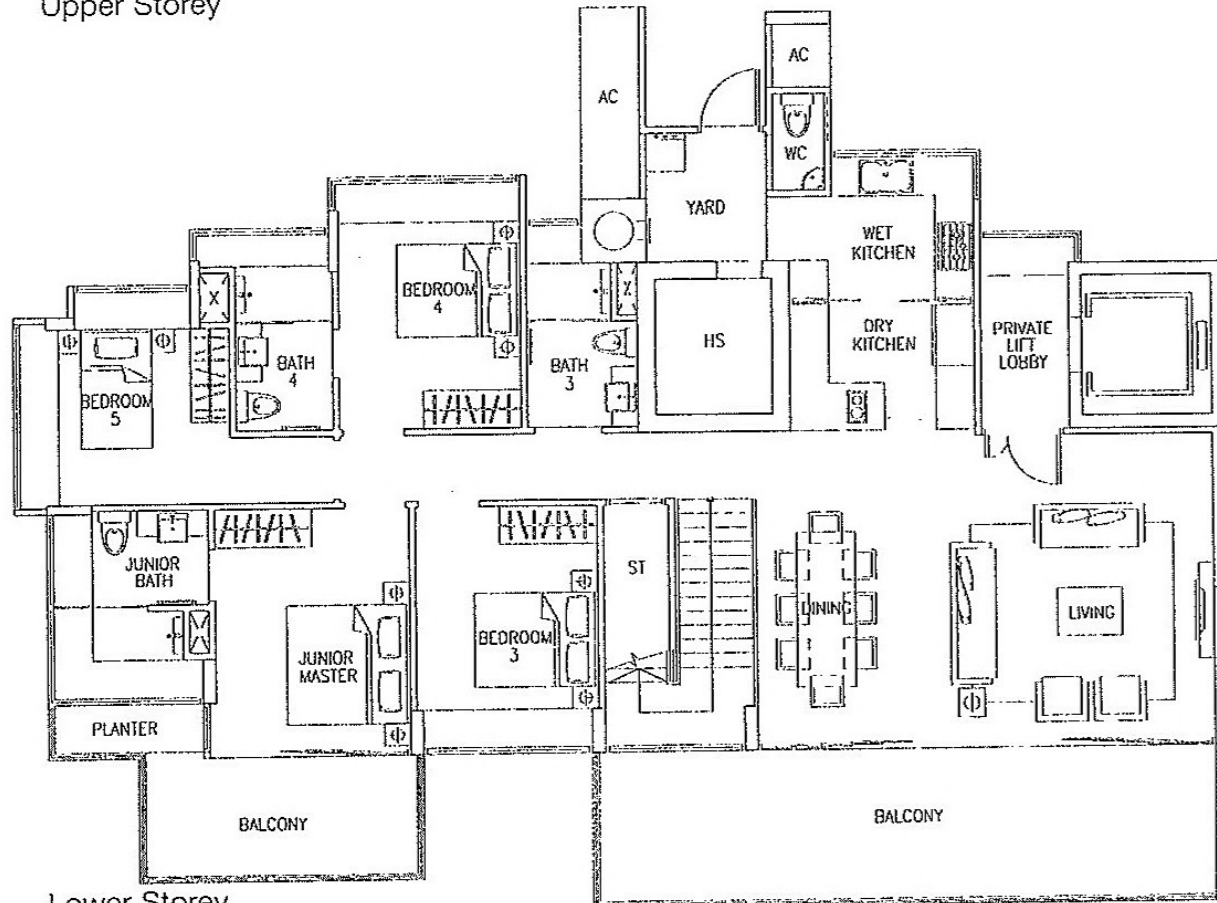
# TYPE PH8

5-Bedroom Penthouse  
289 sq m / 3111 sq ft

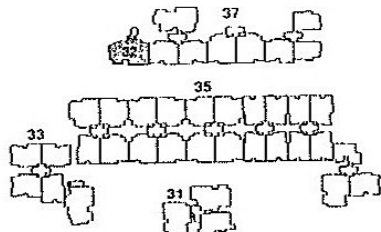
Block 37  
#05-32



Upper Storey



Lower Storey

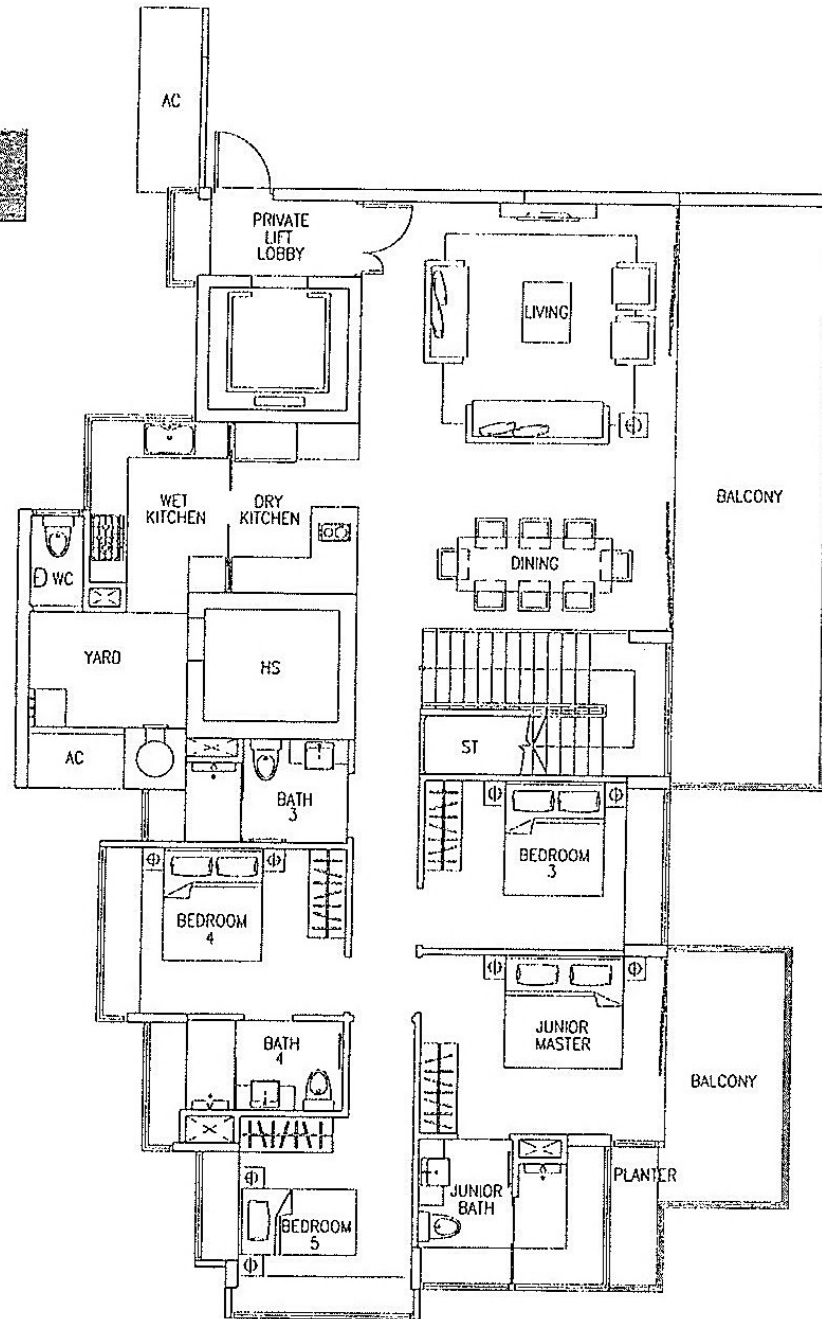


The above plans are subject to change as may be approved by the relevant authority. Areas are approximate measurements and subject to final survey. Plans are not to scale.

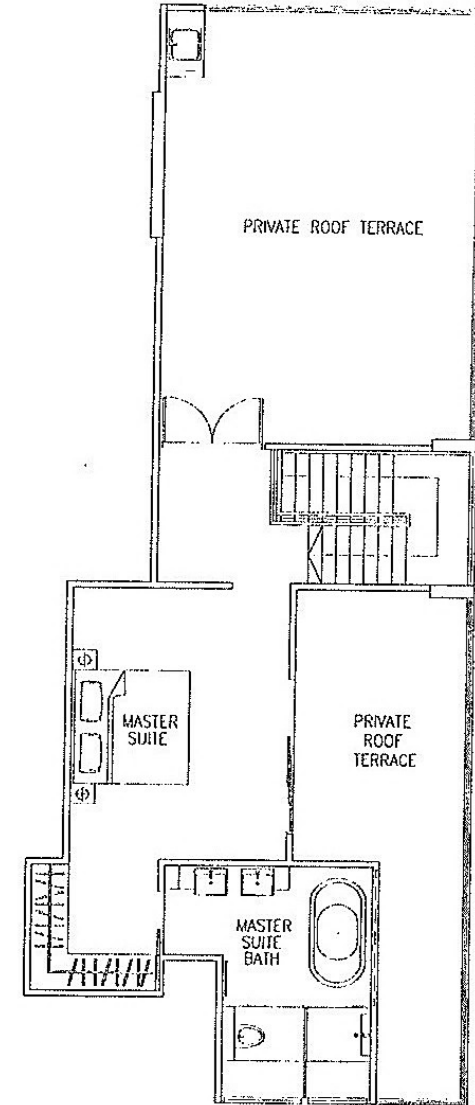
# TYPE PH9

5-Bedroom Penthouse  
291 sq m / 3132 sq ft

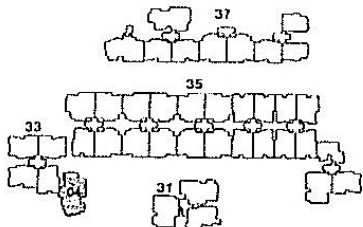
Block 33  
#05-04



Lower Storey



Upper Storey

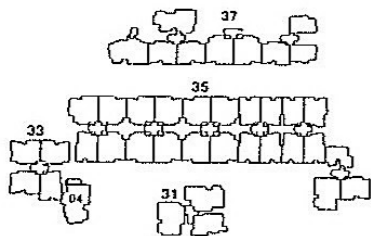
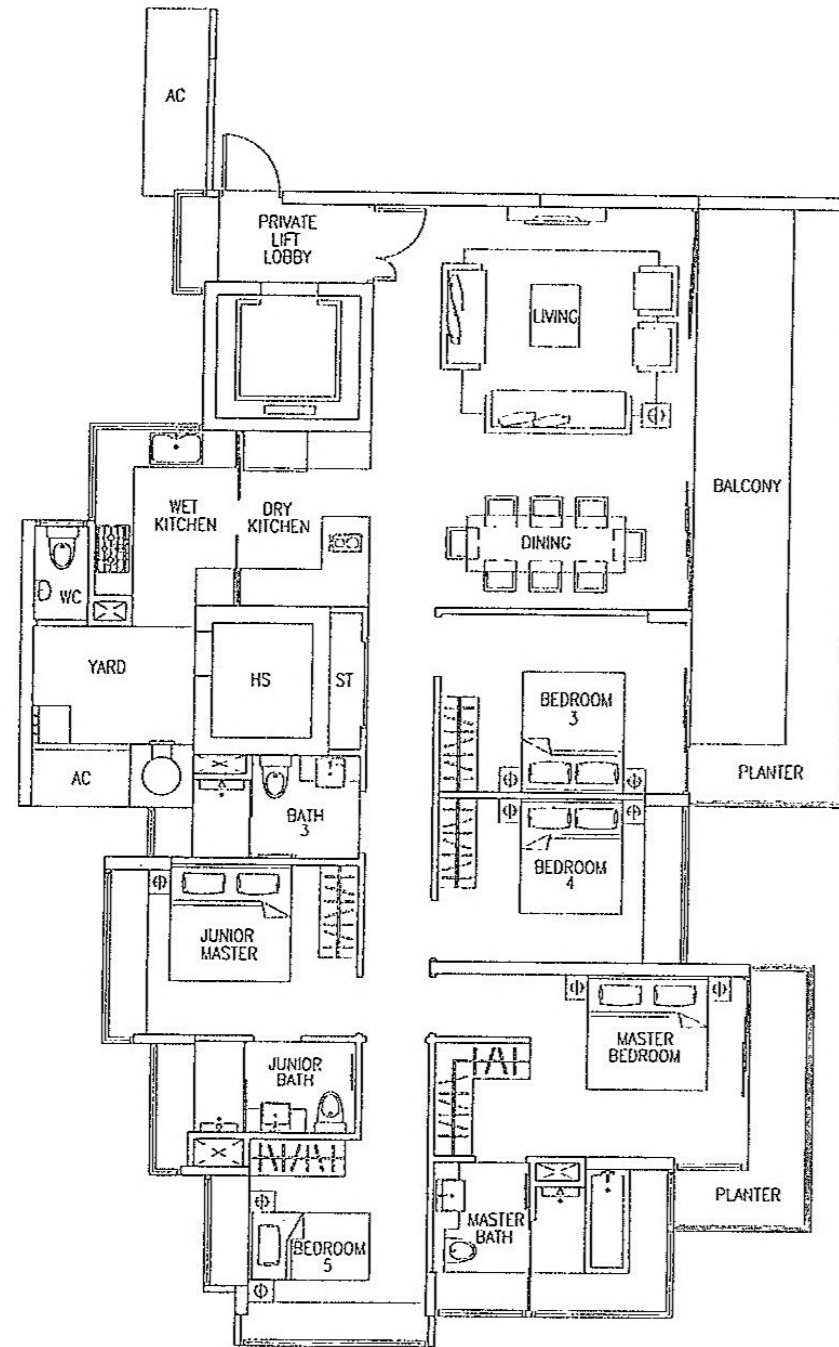


The above plans are subject to change as may be approved by the relevant authority. Areas are approximate measurements and subject to final survey. Plans are not to scale.

# TYPE D2

5-Bedroom  
190 sq m / 2045 sq ft

Block 33  
#02-04 to #04-04

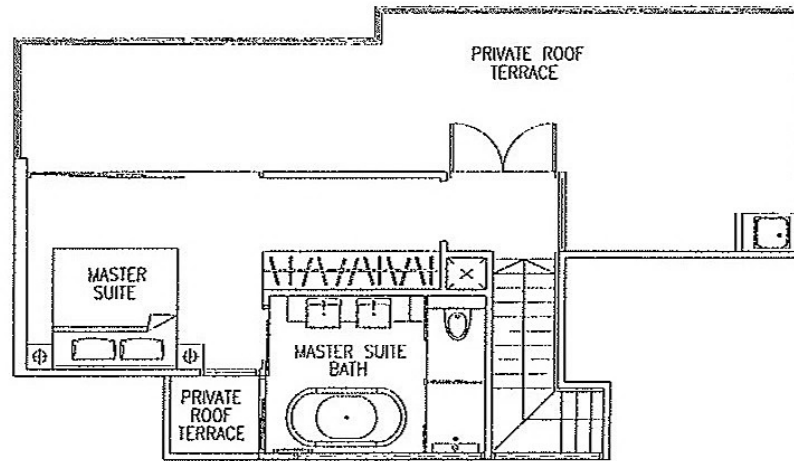


The above plans are subject to change as may be approved by the relevant authority. Areas are approximate measurements and subject to final survey. Plans are not to scale.

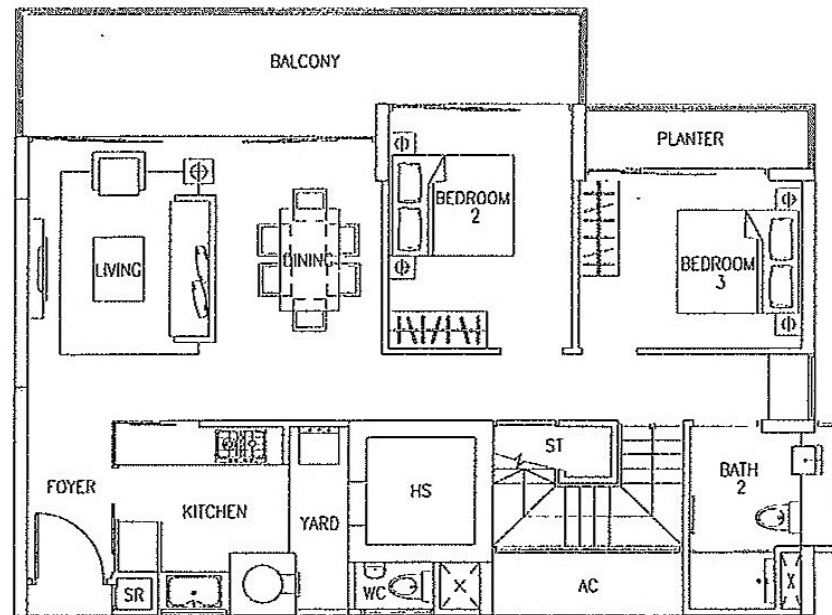
# TYPE PH1

3-Bedroom Penthouse  
177 sq m / 1905 sq ft

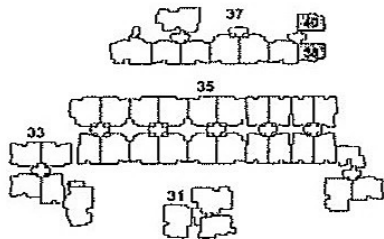
Block 37  
#05-38, #06-40



Upper Storey



Lower Storey

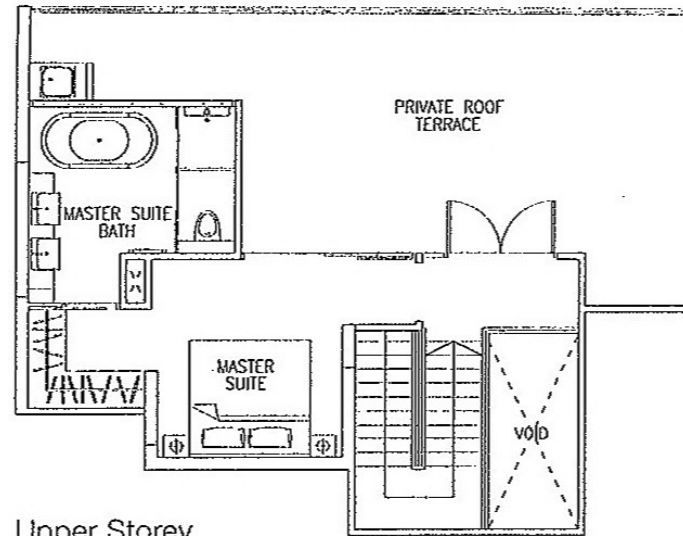




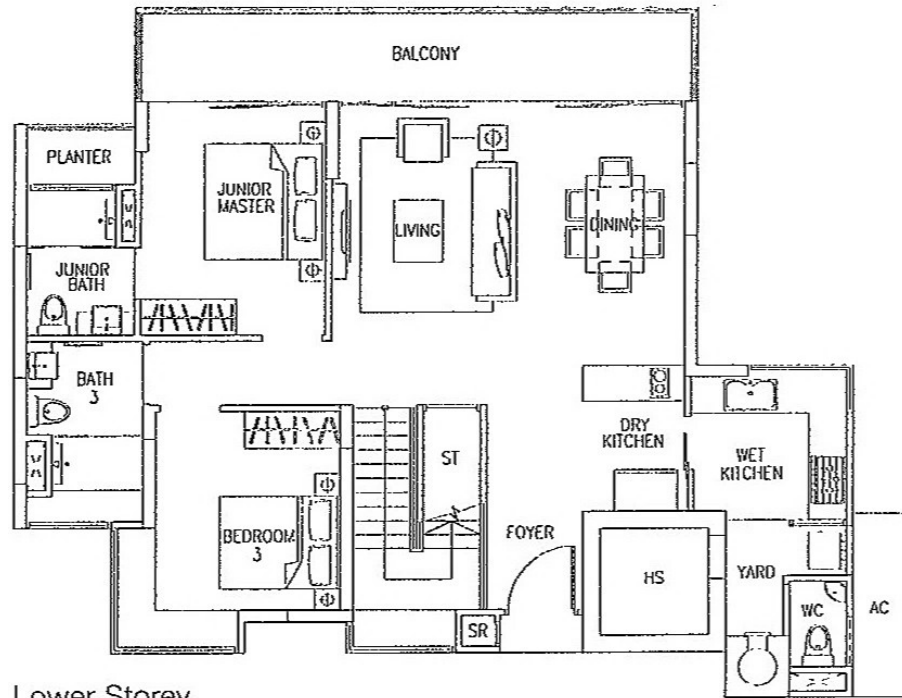
# TYPE PH2

3-Bedroom Penthouse  
192 sq m / 2067 sq ft  
(Inclusive of 4 sq m of void area)

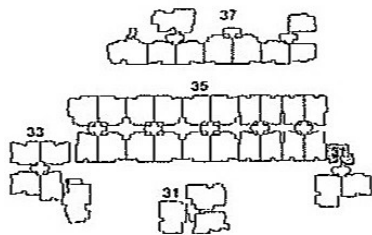
Block 35  
#06-31



Upper Storey



Lower Storey



The above plans are subject to change as may be approved by the relevant authority. Areas are approximate measurements and subject to final survey. Plans are not to scale.

# TYPE PH3a

3-Bedroom Penthouse  
 215 sq m / 2314 sq ft  
 (Inclusive of 6 sq m of void area)

Block 33

#05-05

Block 35

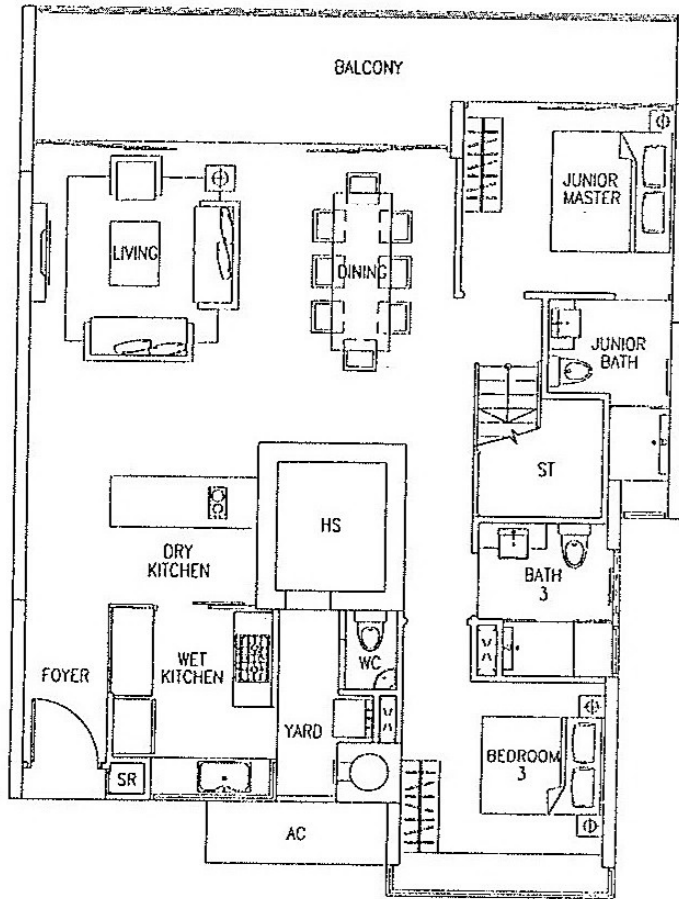
#05-10, #05-21, #05-22,  
 #06-23, #06-24, #05-25,  
 #05-26, #06-27

# TYPE PH3b

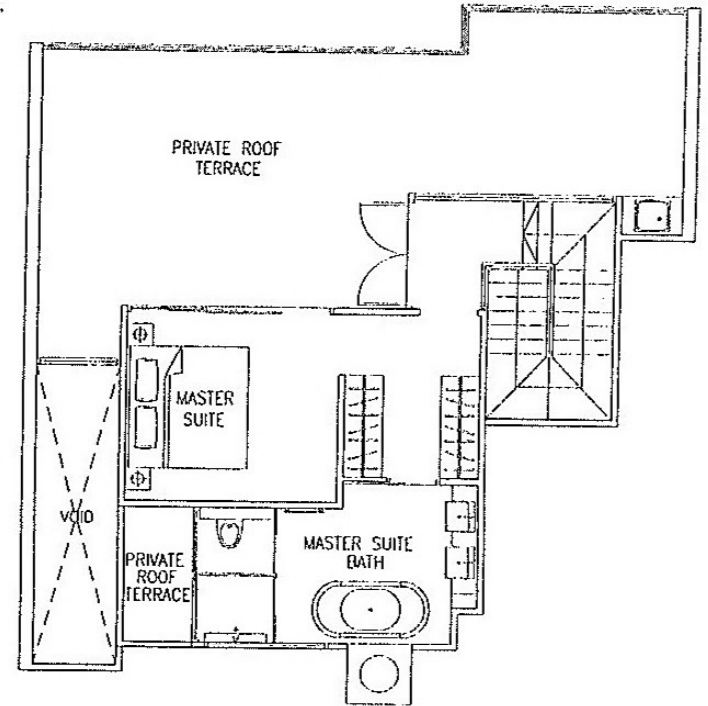
3-Bedroom Penthouse  
 220 sq m / 2368 sq ft  
 (Inclusive of 6 sq m of void area)

Block 35

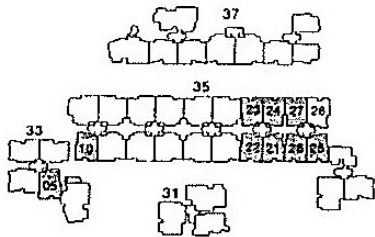
#06-28



Lower Storey



Upper Storey



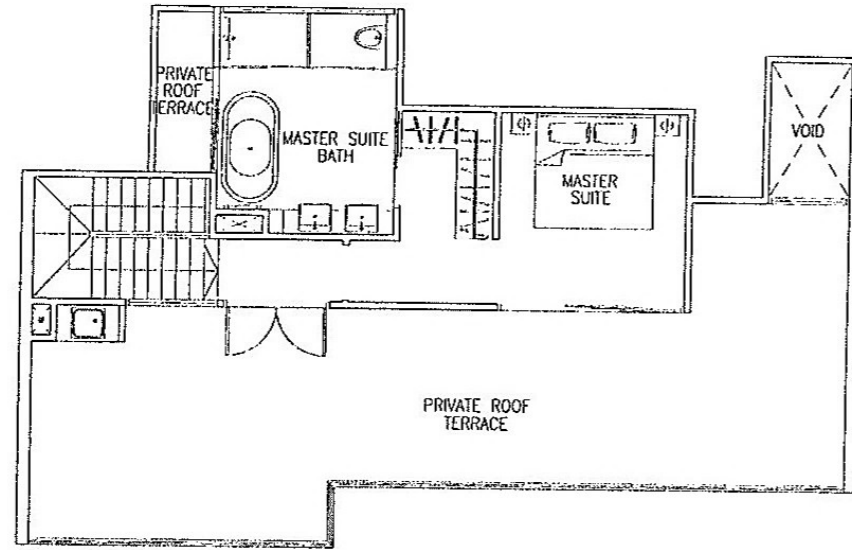
The above plans are subject to change as may be approved by the relevant authority. Areas are approximate measurements and subject to final survey. Plans are not to scale.

# TYPE PH4a

4-Bedroom Penthouse  
 229 sq m / 2465 sq ft  
 (Inclusive of 3 sq m of void area)

Block 33  
 #06-08

Block 37  
 #05-33, #05-34, #05-39



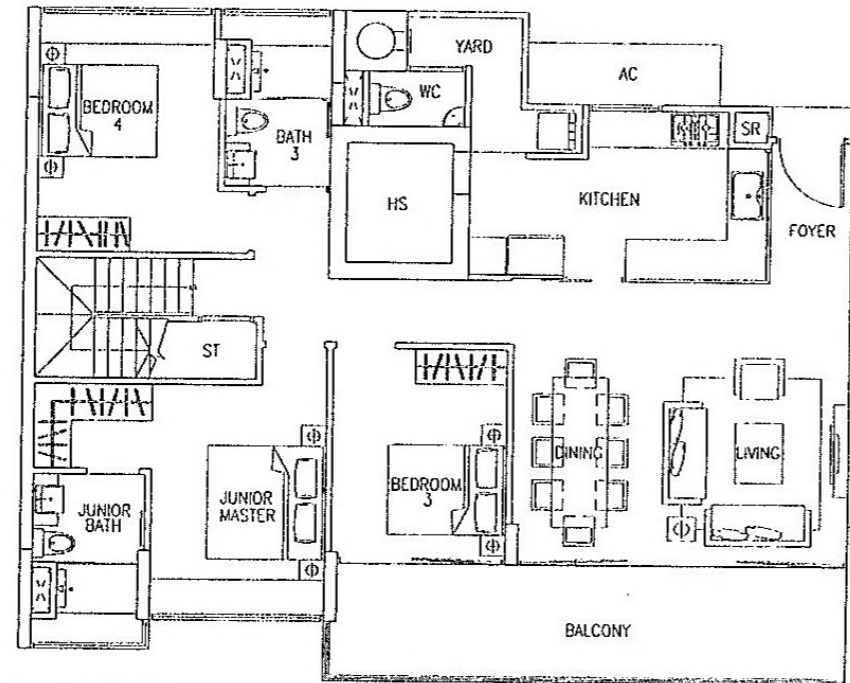
Upper Storey

# TYPE PH4b

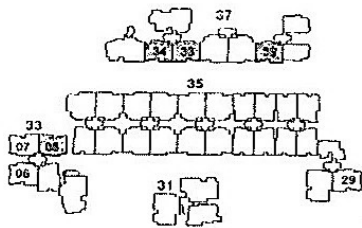
4-Bedroom Penthouse  
 233 sq m / 2508 sq ft  
 (Inclusive of 3 sq m of void area)

Block 33  
 #05-06, #06-07

Block 35  
 #05-29



Lower Storey

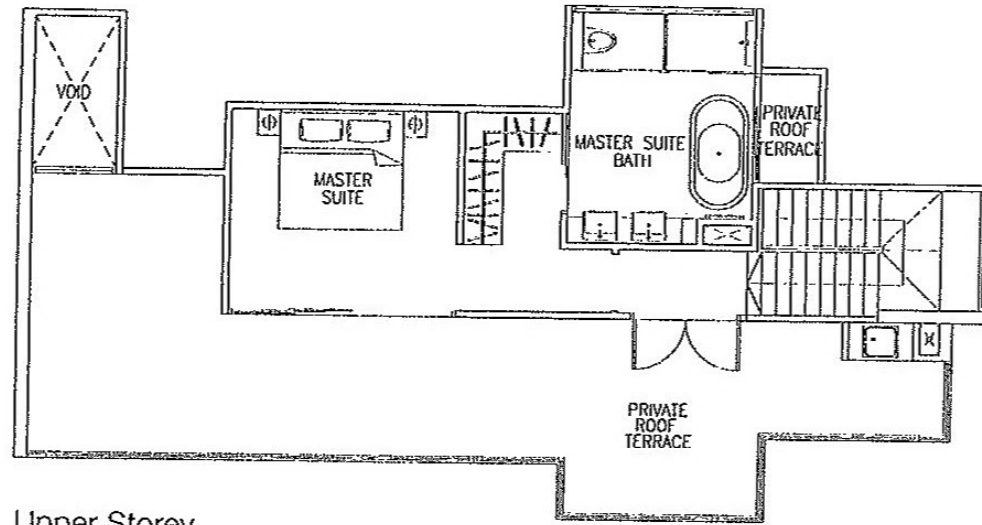


The above plans are subject to change as may be approved by the relevant authority. Areas are approximate measurements and subject to final survey. Plans are not to scale.

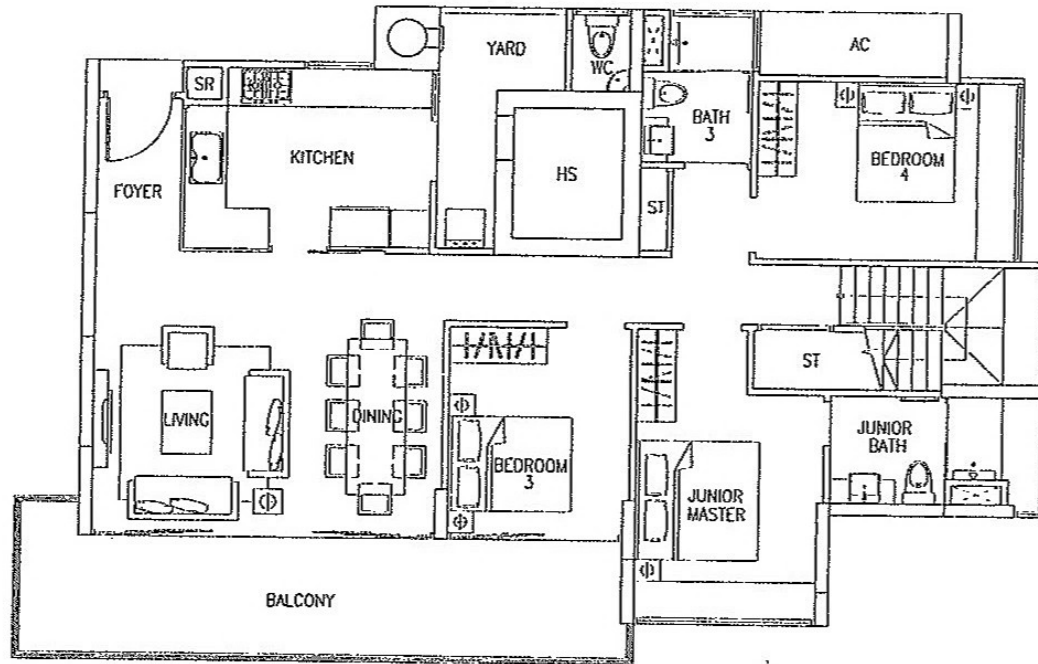
# TYPE PH4c

4-Bedroom Penthouse  
223 sq m / 2400 sq ft  
(Inclusive of 3 sq m of void area)

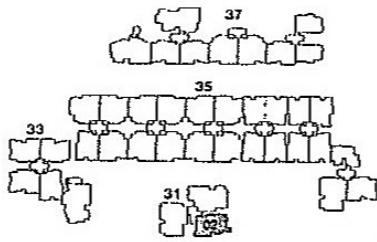
Block 31  
#05-02



Upper Storey



Lower Storey



The above plans are subject to change as may be approved by the relevant authority. Areas are approximate measurements and subject to final survey. Plans are not to scale.

# TYPE C1a

4-Bedroom  
162 sq m / 1744 sq ft

## Block 35

- #02-09 to #04-09
- #03-12 to #05-12
- #02-13 to #04-13
- #02-14 to #04-14
- #03-15 to #05-15
- #03-16 to #05-16
- #02-17 to #04-17
- #02-18 to #04-18
- #03-19 to #05-19
- #03-20 to #05-20

## Block 37

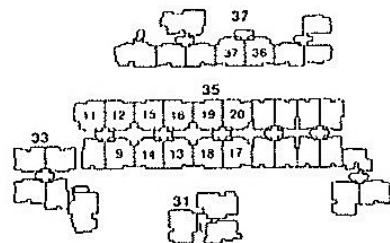
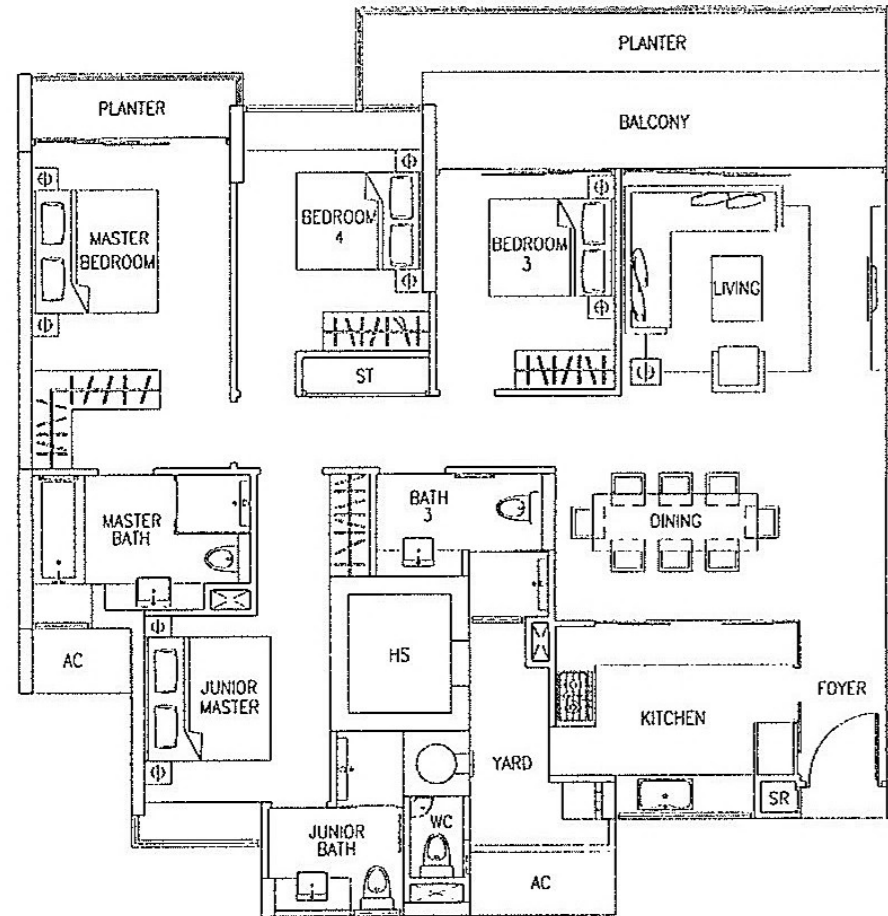
- #02-36 to #04-36
- #02-37 to #04-37

# TYPE C1b

4-Bedroom  
165 sq m / 1776 sq ft

## Block 35

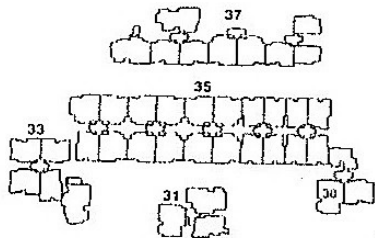
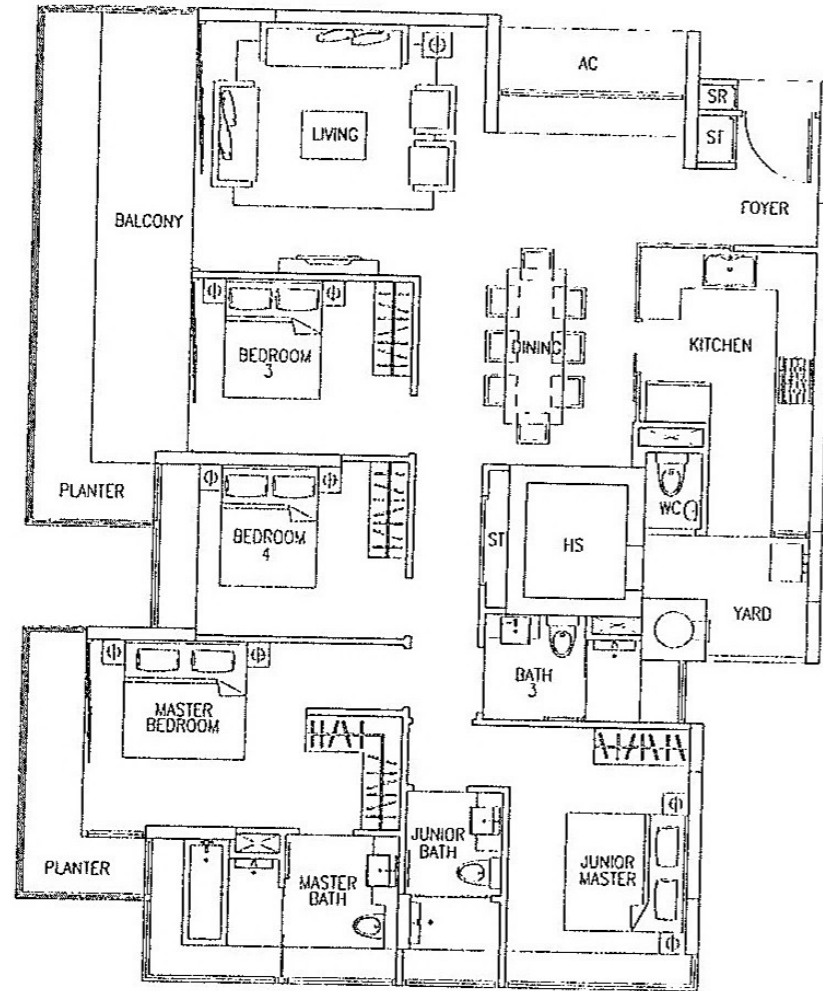
- #03-11 to #05-11



# TYPE C2a

4-Bedroom  
171 sq m / 1841 sq ft

Block 35  
#02-30 to #04-30

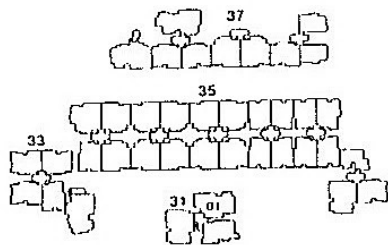
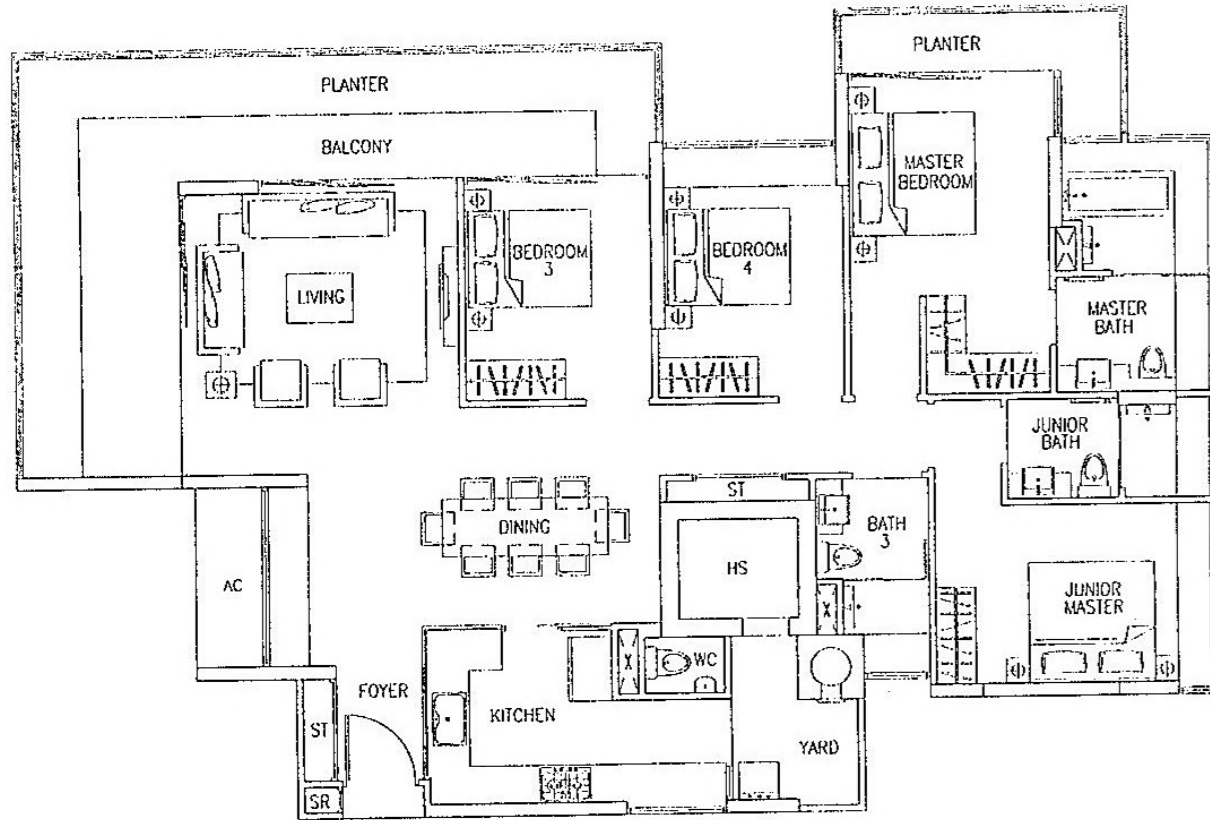


The above plans are subject to change as may be approved by the relevant authority. Areas are approximate measurements and subject to final survey. Plans are not to scale.

# TYPE C2b

4-Bedroom  
180 sq m / 1938 sq ft

Block 31  
#03-01 to #05-01

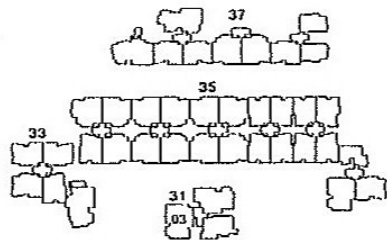
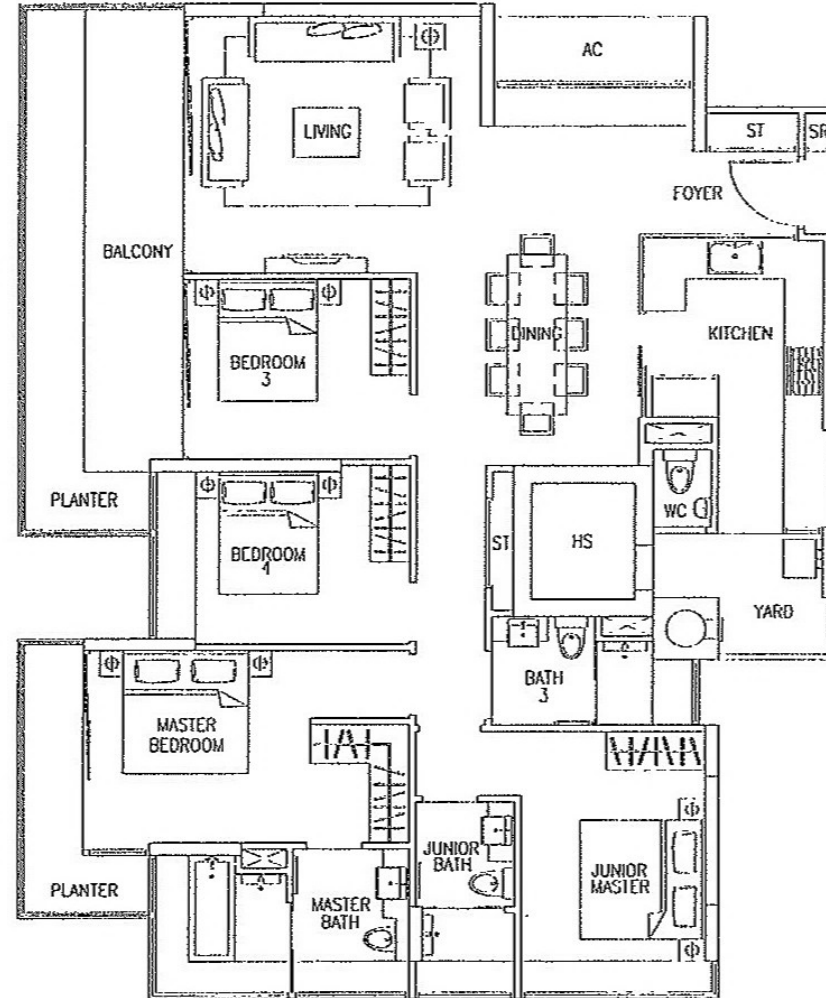


The above plans are subject to change as may be approved by the relevant authority. Areas are approximate measurements and subject to final survey. Plans are not to scale.

# TYPE C2c

4-Bedroom  
169 sq m / 1819 sq ft

Block 31  
#03-03 to #05-03



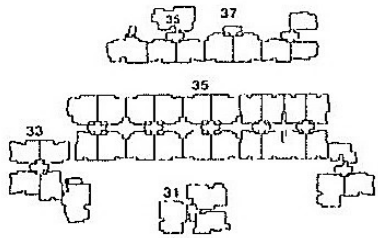
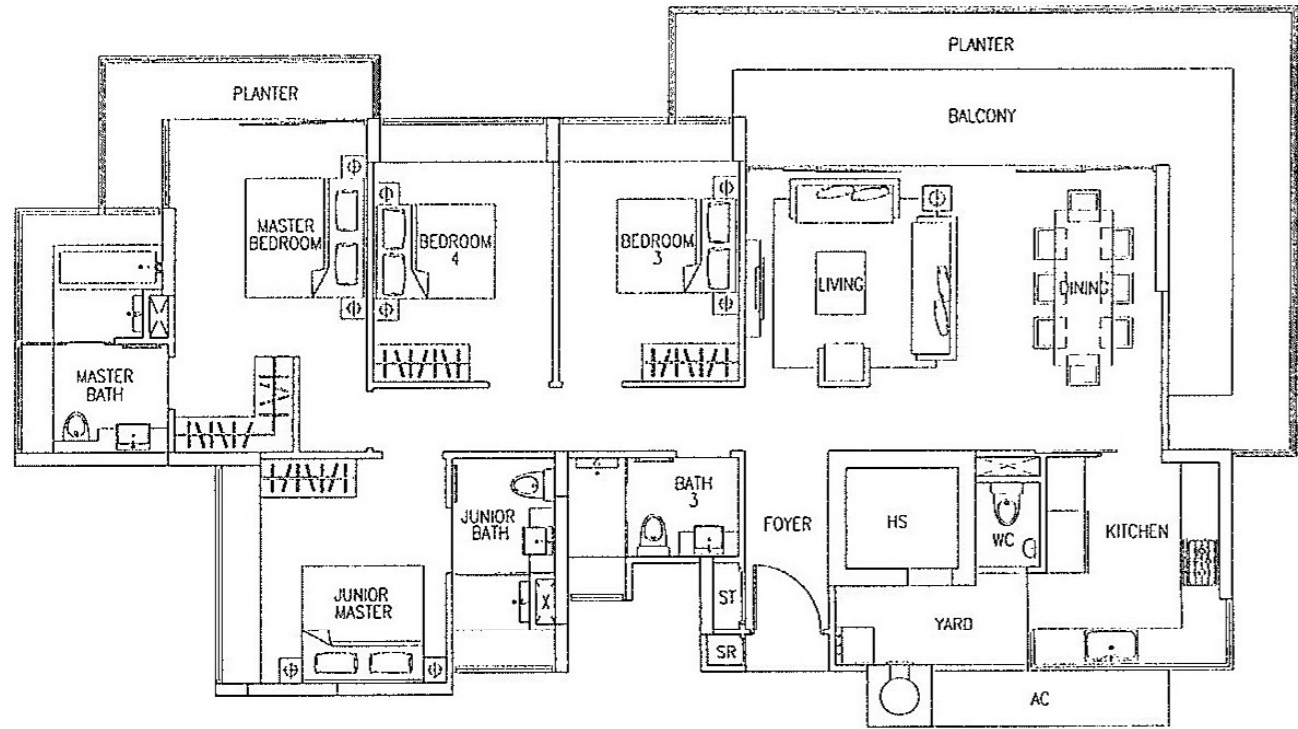
The above plans are subject to change as may be approved by the relevant authority. Areas are approximate measurements and subject to final survey. Plans are not to scale.



# TYPE C3

4-Bedroom  
182 sq m / 1959 sq ft

Block 37  
#03-35 to #05-35



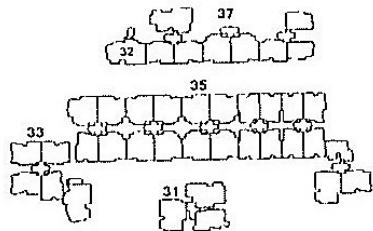
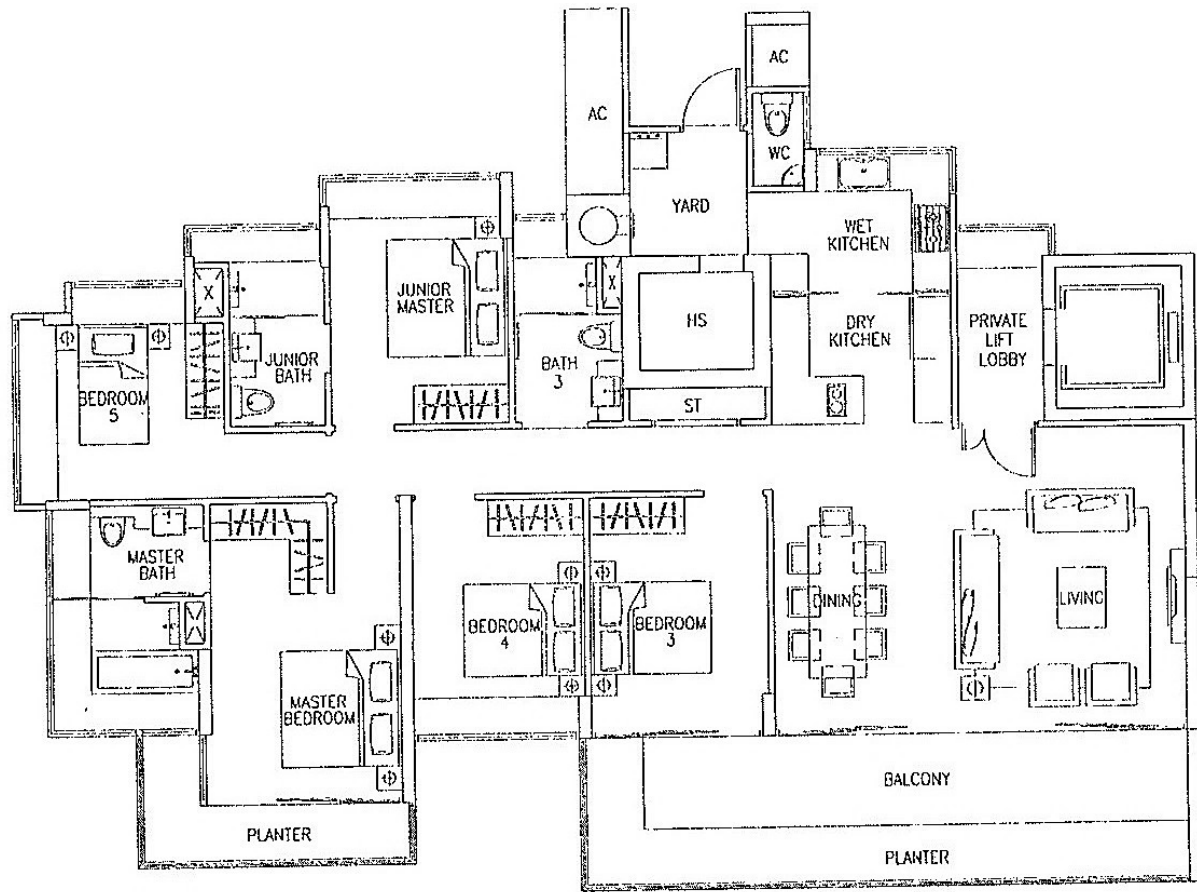
The above plans are subject to change as may be approved by the relevant authority. Areas are approximate measurements and subject to final survey. Plans are not to scale.



# TYPE D1

5-Bedroom  
189 sq m / 2034 sq ft

Block 37  
#02-32 to #04-32

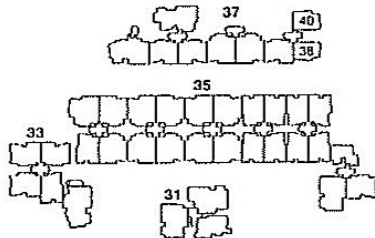
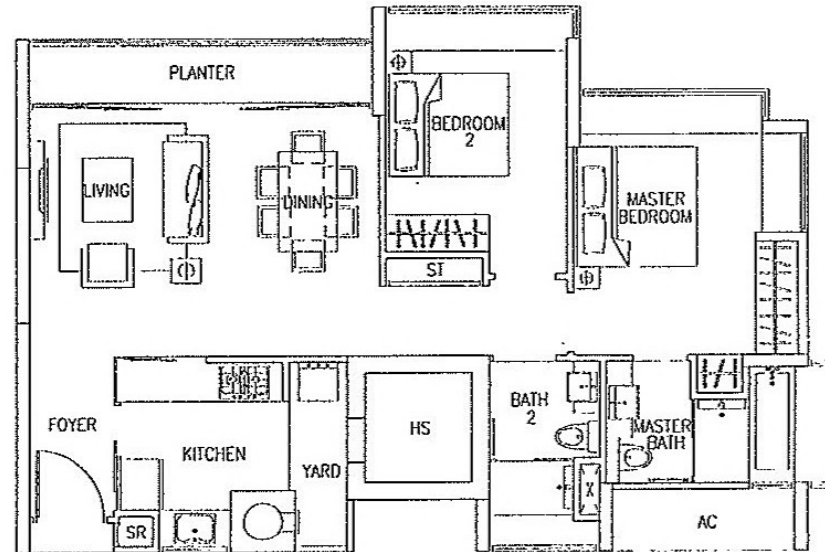


The above plans are subject to change as may be approved by the relevant authority. Areas are approximate measurements and subject to final survey. Plans are not to scale.

# TYPE A1

2-Bedroom  
94 sq m / 1012 sq ft

Block 37  
#02-38 to #04-38  
#03-40 to #05-40



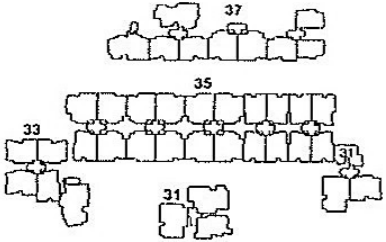
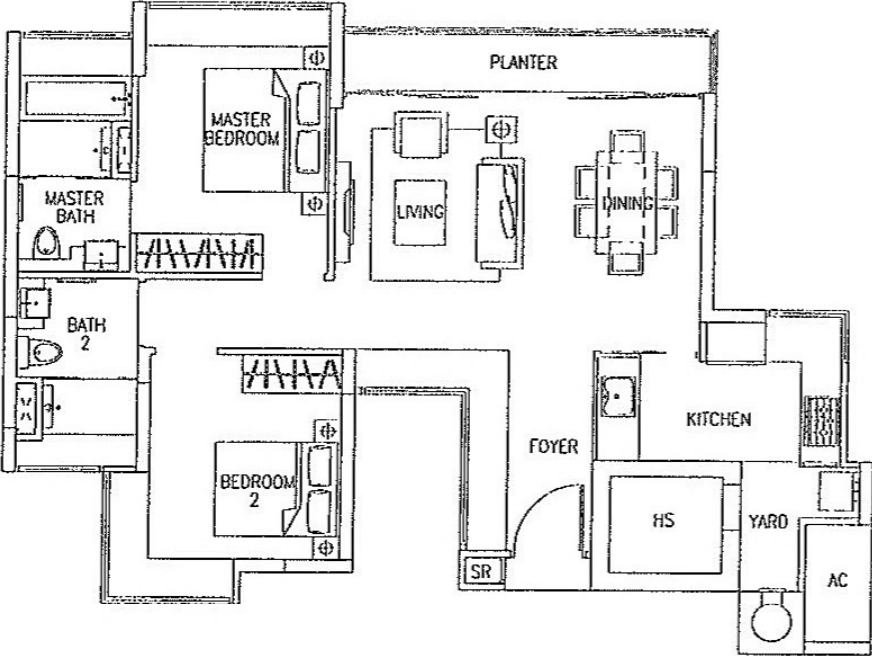
The above plans are subject to change as may be approved by the relevant authority. Areas are approximate measurements and subject to final survey. Plans are not to scale.



# TYPE A2

2-Bedroom  
95 sq m / 1023 sq ft

Block 35  
#03-31 to #05-31



The above plans are subject to change as may be approved by the relevant authority. Areas are approximate measurements and subject to final survey. Plans are not to scale.

# TYPE B1a

3-Bedroom  
128 sq m / 1378 sq ft

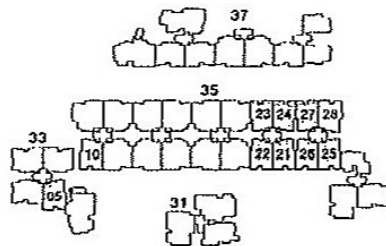
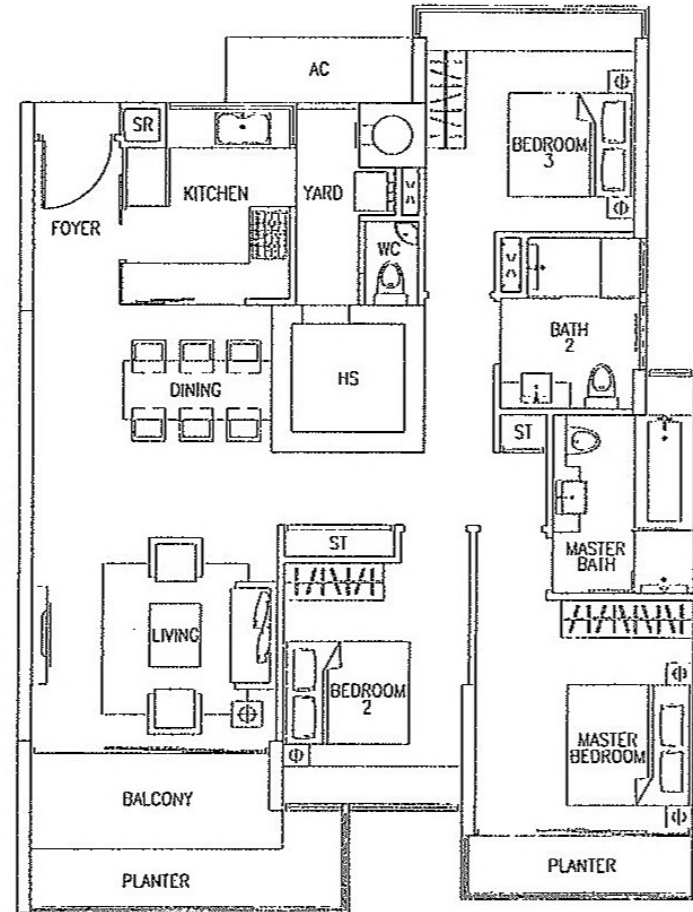
Block 33  
#02-05 to #04-05

Block 35  
#02-10 to #04-10  
#03-21 to #04-21  
#03-22 to #04-22  
#03-23 to #05-23  
#03-24 to #05-24  
#02-25 to #04-25  
#02-26 to #04-26  
#03-27 to #05-27

# TYPE B1b

3-Bedroom  
131 sq m / 1410 sq ft

Block 35  
#03-28 to #05-28

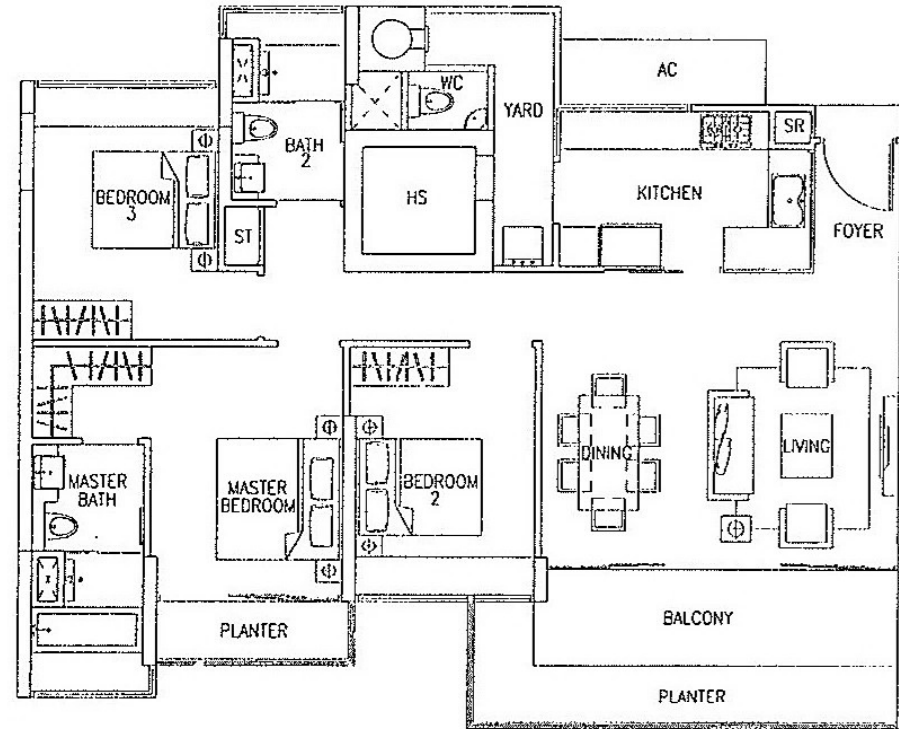


# TYPE B2a

3-Bedroom  
131 sq m / 1410 sq ft

Block 33  
#03-08 to #05-08

Block 37  
#02-33 to #04-33  
#02-34 to #04-34  
#02-39 to #04-39

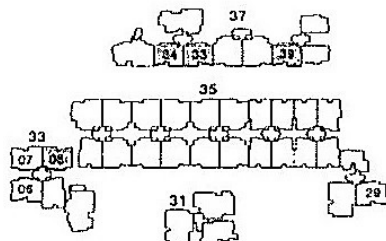


# TYPE B2b

3-Bedroom  
134 sq m / 1442 sq ft

Block 33  
#02-06 to #04-06  
#03-07 to #05-07

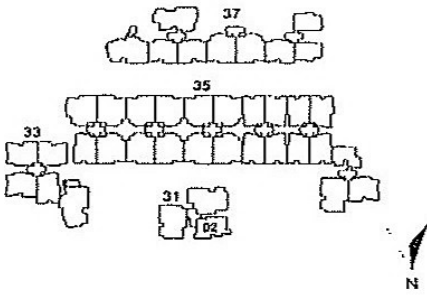
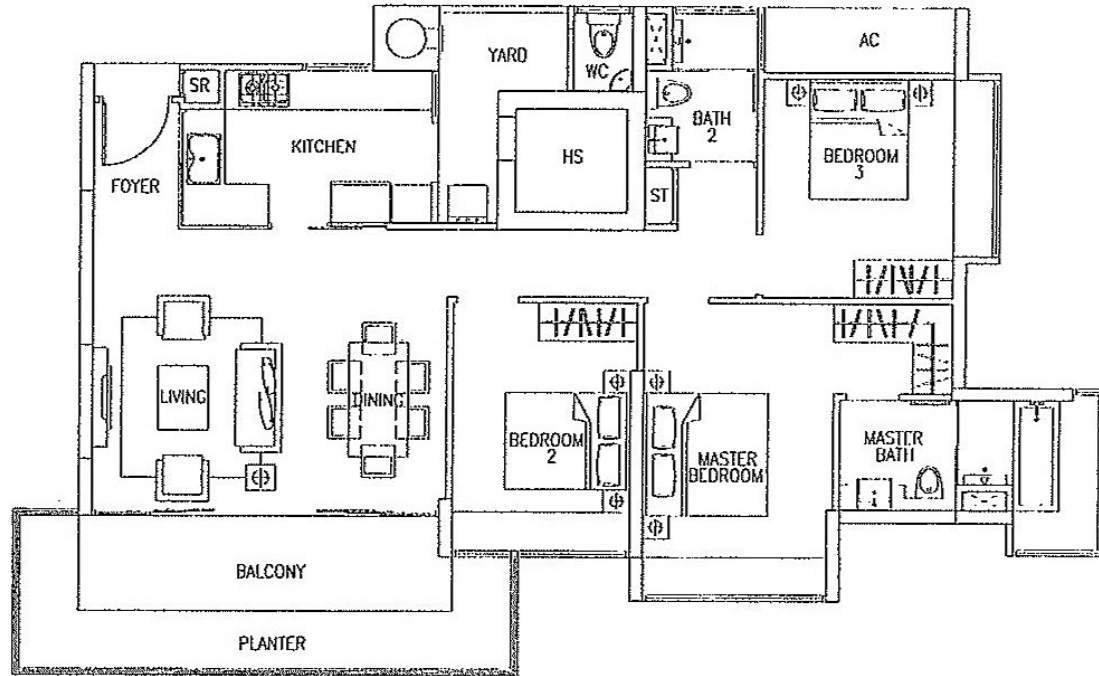
Block 35  
#02-29 to #04-29



# TYPE B2c

3-Bedroom  
131 sq m / 1410 sq ft

Block 31  
#02-02 to #04-02



The above plans are subject to change as may be approved by the relevant authority. Areas are approximate measurements and subject to final survey. Plans are not to scale.

# TYPE PH5a

4-Bedroom Penthouse  
 266 sq m / 2863 sq ft  
 (Inclusive of 6 sq m of void area)

Block 35

#05-09, #06-12, #05-13, #05-14, #06-15,  
 #06-16, #05-17, #05-18, #06-19, #06-20

Block 37

#05-36, #05-37

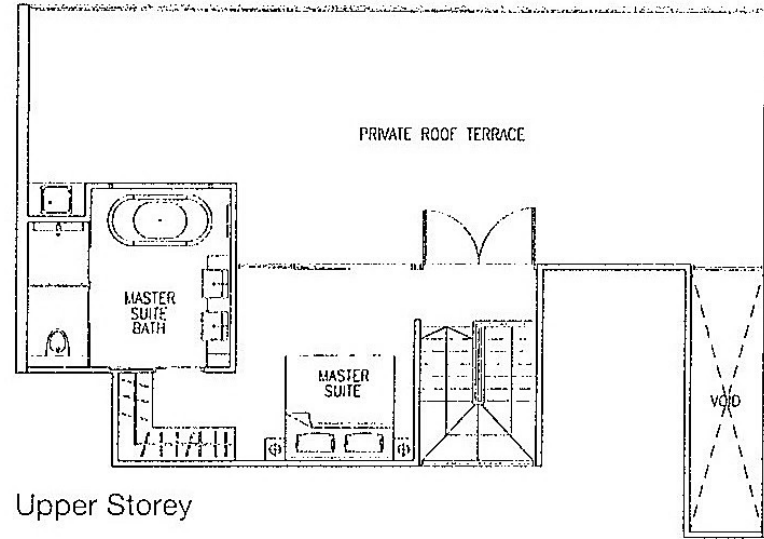
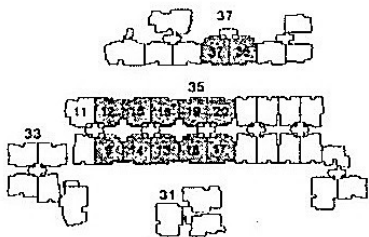


# TYPE PH5b

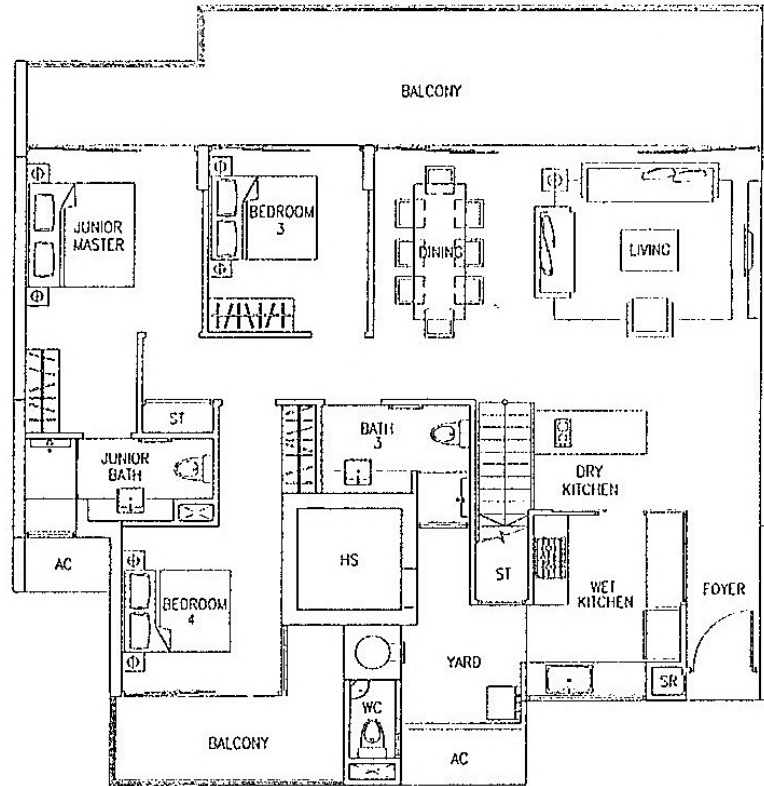
4-Bedroom Penthouse  
 270 sq m / 2906 sq ft  
 (Inclusive of 6 sq m of void area)

Block 35

#06-11



Upper Storey



Lower Storey

The above plans are subject to change as may be approved by the relevant authority. Areas are approximate measurements and subject to final survey. Plans are not to scale.