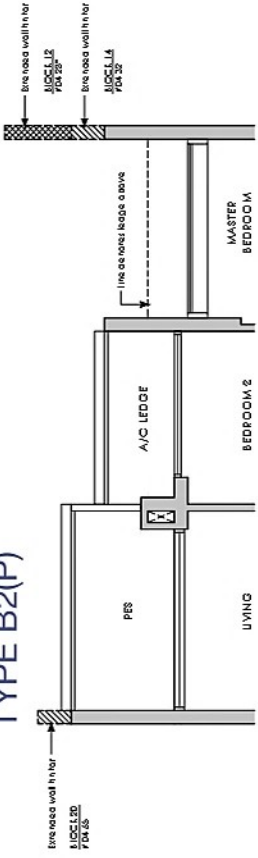
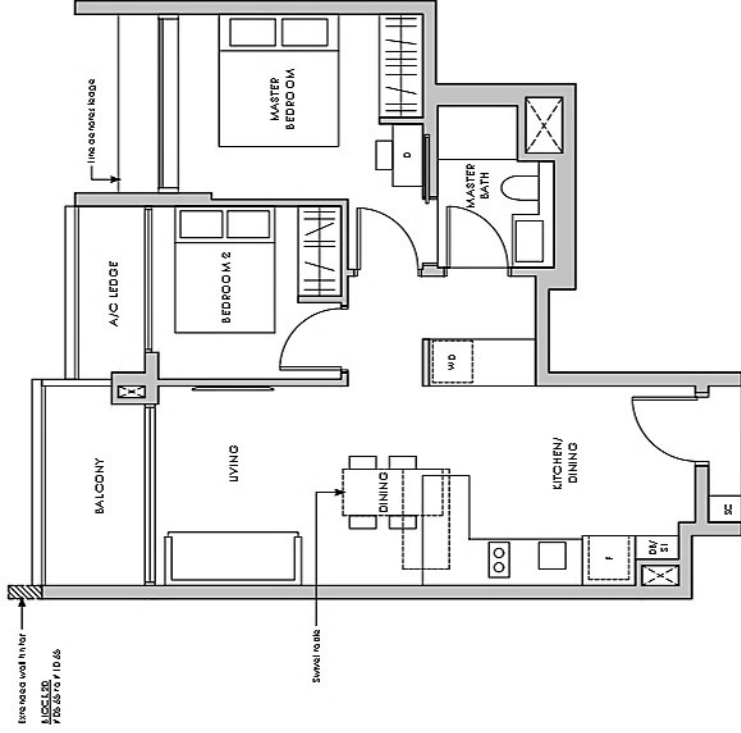


TYPE B2(P)



TYPE B2



TYPE B2(P)

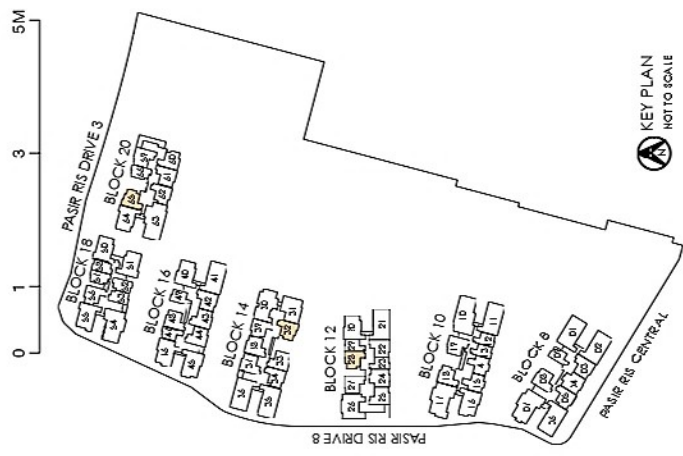
67 sq m / 721 sq ft
 INCLUSIVE OF 5 SQM PES
 & 3 SQM A/C LEDGE

- BLK 12 #04-28*
- BLK 14 #04-32
- BLK 20 #04-65

TYPE B2

67 sq m / 721 sq ft
 INCLUSIVE OF 5 SQM BALCONY
 & 3 SQM A/C LEDGE

- BLK 12 #05-28* TO #11-28*
- BLK 14 #05-32 TO #11-32
- BLK 20 #05-65 TO #10-65



LEGEND:
 D - Dresser
 F - Fridge

SC - Shoe Cabinet
 WD - Washer cum Dryer

DB/ST - Distribution Board/Store

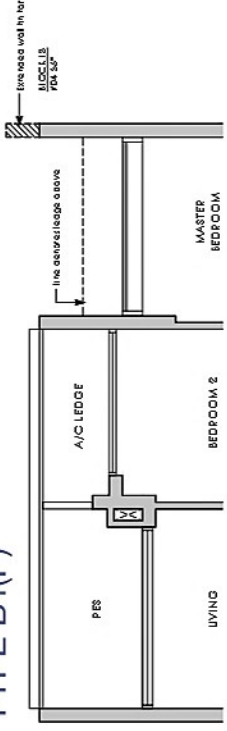
* MIRROR IMAGE



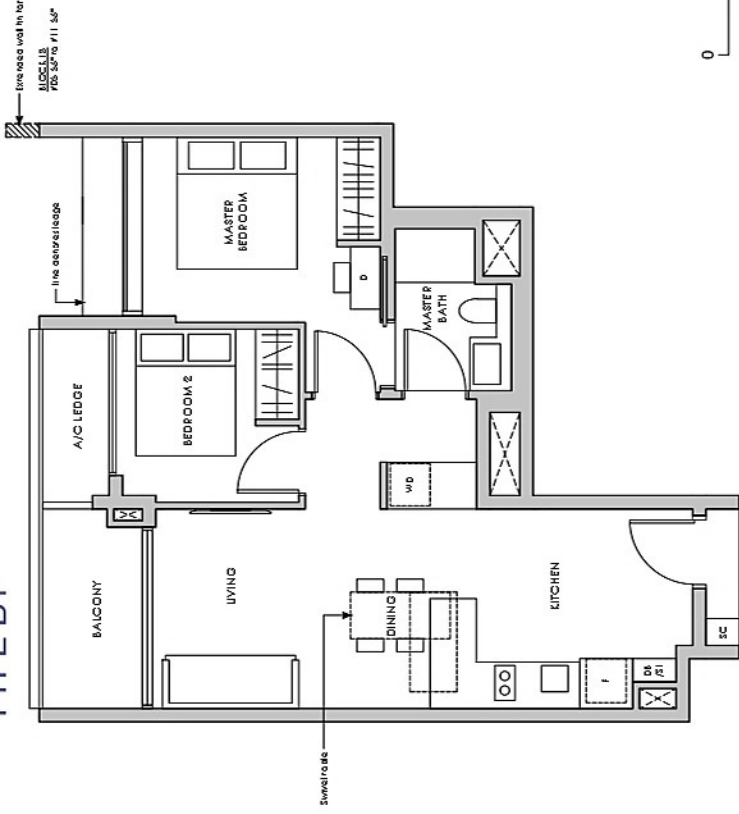
All plans are subjected to amendments as may be approved by the relevant authorities. Floor areas are approximate measurements and are subjected to final survey. *The balcony shall not be enclosed. Only approved balcony screens are to be used. For illustration of the approved balcony screen, please refer to the diagram annexed hereto as "Annexure".

2-Bedroom

TYPE B1(P)



TYPE B1



TYPE B1(P)

66 sq m / 710 sq ft
 INCLUSIVE OF 5 SQM PES
 & 3 SQM A/C LEDGE

- BLK 8 #04-05
- BLK 10 #04-18
- BLK 14 #04-34
#04-39*
- BLK 18 #04-56*
- BLK 20 #04-60*
#04-62

TYPE B1

66 sq m / 710 sq ft
 INCLUSIVE OF 5 SQM BALCONY
 & 3 SQM A/C LEDGE

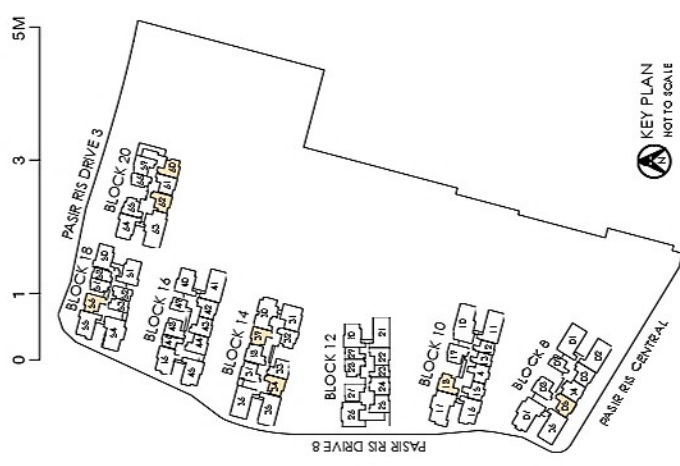
- BLK 8 #05-05 TO #10-05
- BLK 10 #05-18 TO #10-18
- BLK 14 #05-34 TO #11-34
#05-39* TO #11-39*
- BLK 18 #05-56* TO #11-56*
- BLK 20 #05-60* TO #10-60*
#05-62 TO #10-62

LEGEND:
 D - Dresser
 F - Fridge

SC - Shoe Cabinet
 WD - Washer cum Dryer

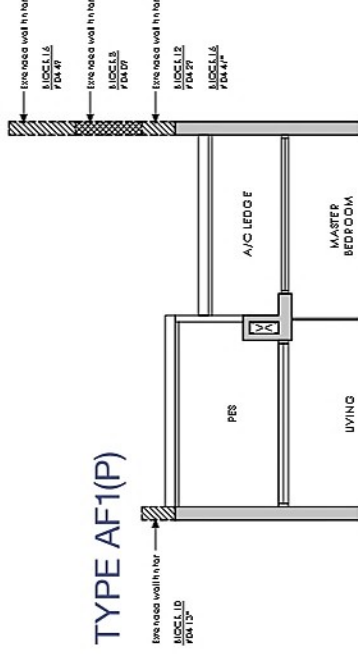
DB/ST - Distribution Board/Store

* MIRROR IMAGE

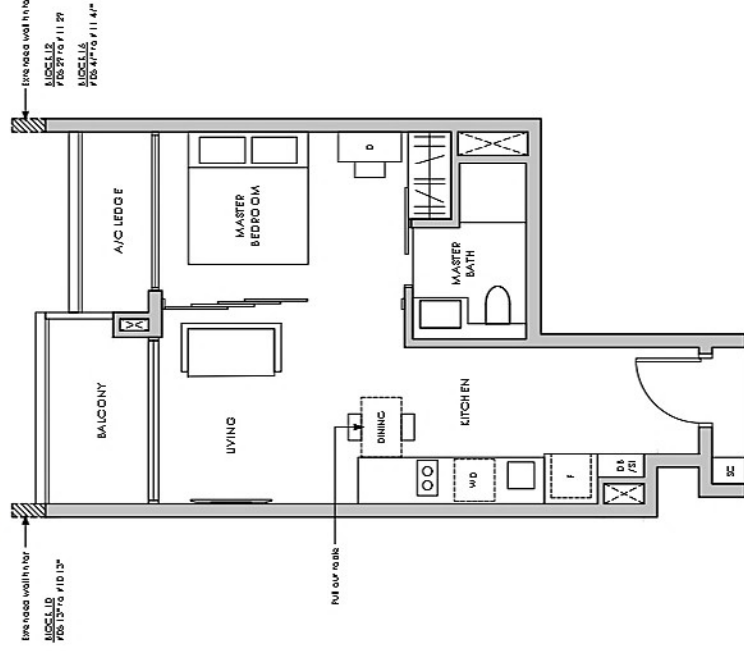


All plans are subjected to amendments as may be approved by the relevant authorities. Floor areas are approximate measurements and are subjected to final survey. *The balcony shall not be enclosed. Only approved balcony screens are to be used. For illustration of the approved balcony screen, please refer to the diagram annexed hereto as "Annexure".

1-Bedroom Flexi



TYPE AF1



TYPE AF1(P)

48 sq m / 517 sq ft
INCLUSIVE OF 5 SQM PES
& 3 SQM A/C LEDGE

- BLK 8 #04-09
- BLK 10 #04-12*
#04-13*
- BLK 12 #04-23*
#04-29
- BLK 16 #04-47*
#04-49

TYPE AF1

48 sq m / 517 sq ft
INCLUSIVE OF 5 SQM BALCONY
& 3 SQM A/C LEDGE

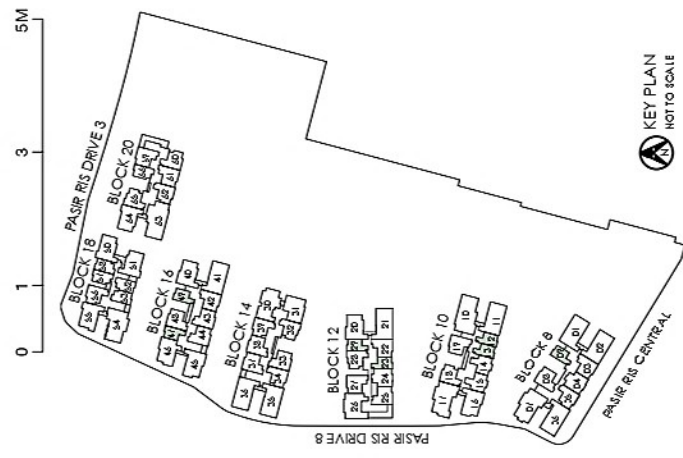
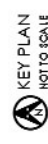
- BLK 8 #05-09 TO #10-09
- BLK 10 #05-12* TO #10-12*
#05-13* TO #10-13*
- BLK 12 #05-23* TO #11-23*
#05-29 TO #11-29
- BLK 16 #05-47* TO #11-47*
#05-49 TO #11-49

LEGEND:
D - Dresser
F - Fridge

SC - Shoe Cabinet
WD - Washer cum Dryer

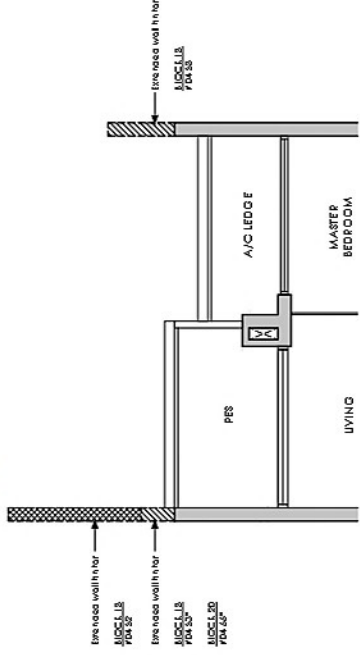
DB/ST - Distribution Board/Store

* MIRROR IMAGE

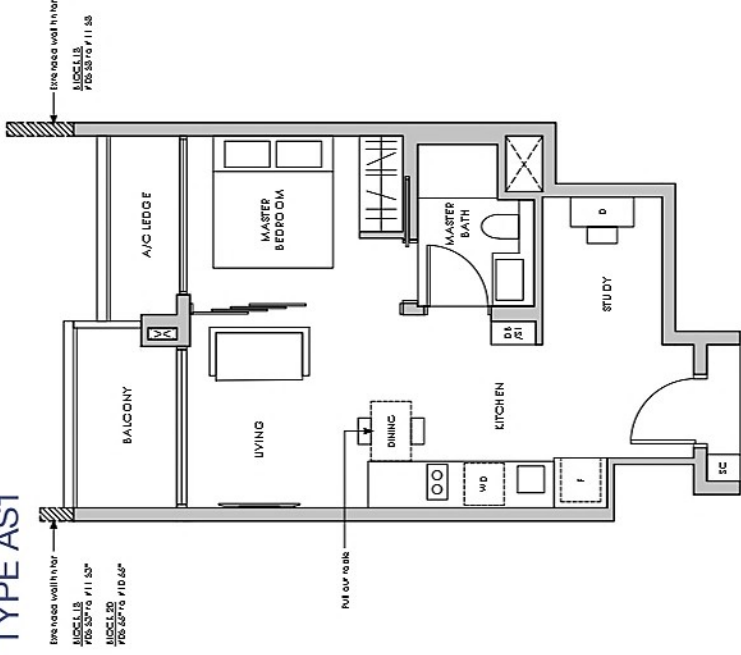


All plans are subjected to amendments as may be approved by the relevant authorities. Floor areas are approximate measurements and are subjected to final survey. The balcony shall not be enclosed. Only approved balcony screens are to be used. For illustration of the approved balcony screen, please refer to the diagram annexed hereto as "Annexure".

TYPE AS1(P)



TYPE AS1



TYPE AS1(P)

50 sq m / 538 sq ft
INCLUSIVE OF 5 SQM PES
& 3 SQM A/C LEDGE

- BLK 18 #04-52
- #04-53*
- #04-57*
- #04-58
- BLK 20 #04-66*

TYPE AS1

50 sq m / 538 sq ft
INCLUSIVE OF 5 SQM BALCONY
& 3 SQM A/C LEDGE

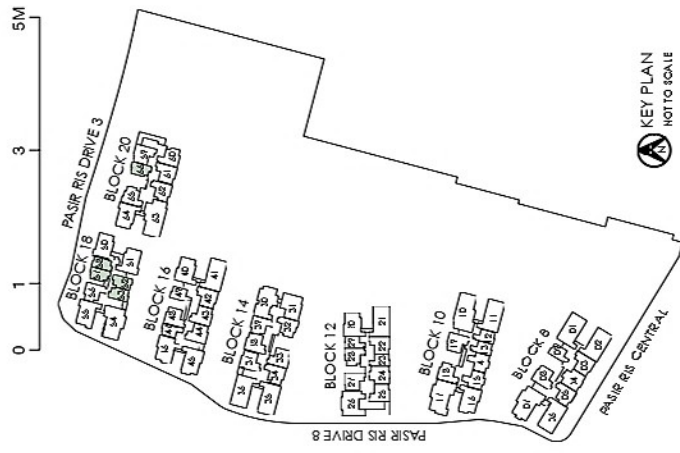
- BLK 18 #05-52 TO #11-52
- #05-53* TO #11-53*
- #05-57* TO #11-57*
- #05-58 TO #11-58
- BLK 20 #05-66* TO #10-66*

LEGEND:
D - Dresser
F - Fridge

SC - Shoe Cabinet
WD - Washer cum Dryer

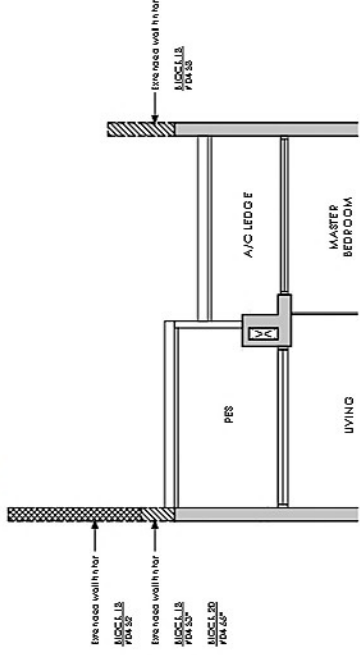
DB/ST - Distribution Board/Store

* MIRROR IMAGE

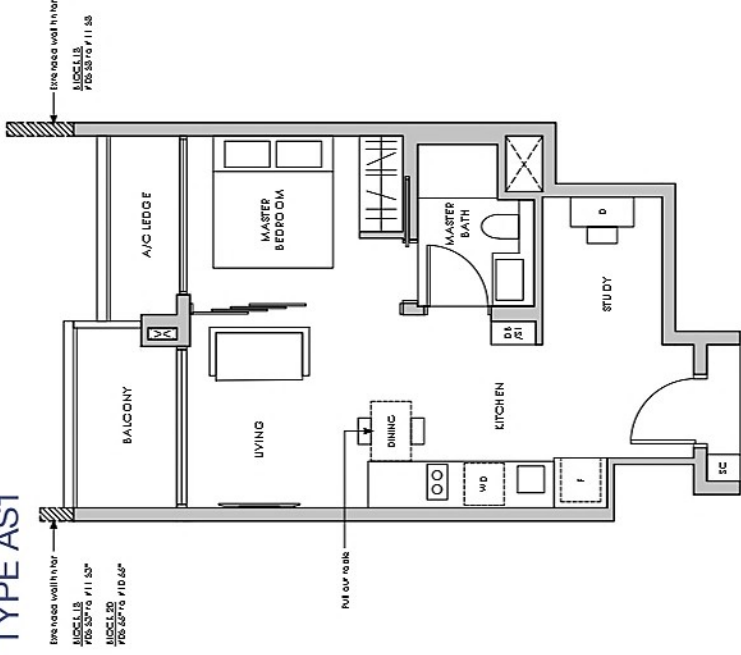


All plans are subjected to amendments as may be approved by the relevant authorities. Floor areas are approximate measurements and are subjected to final survey. The balcony shall not be enclosed. Only approved balcony screens are to be used. For illustration of the approved balcony screen, please refer to the diagram annexed hereto as "Annexure".

TYPE AS1(P)



TYPE AS1



TYPE AS1(P)

50 sq m / 538 sq ft
INCLUSIVE OF 5 SQM PES
& 3 SQM A/C LEDGE

- BLK 18 #04-52
- #04-53*
- #04-57*
- #04-58
- BLK 20 #04-66*

TYPE AS1

50 sq m / 538 sq ft
INCLUSIVE OF 5 SQM BALCONY
& 3 SQM A/C LEDGE

- BLK 18 #05-52 TO #11-52
- #05-53* TO #11-53*
- #05-57* TO #11-57*
- #05-58 TO #11-58
- BLK 20 #05-66* TO #10-66*

LEGEND:
D - Dresser
F - Fridge

SC - Shoe Cabinet
WD - Washer cum Dryer

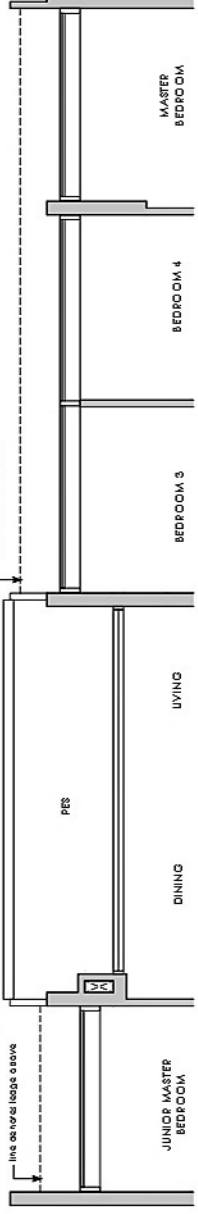
DB/ST - Distribution Board/Store

* MIRROR IMAGE

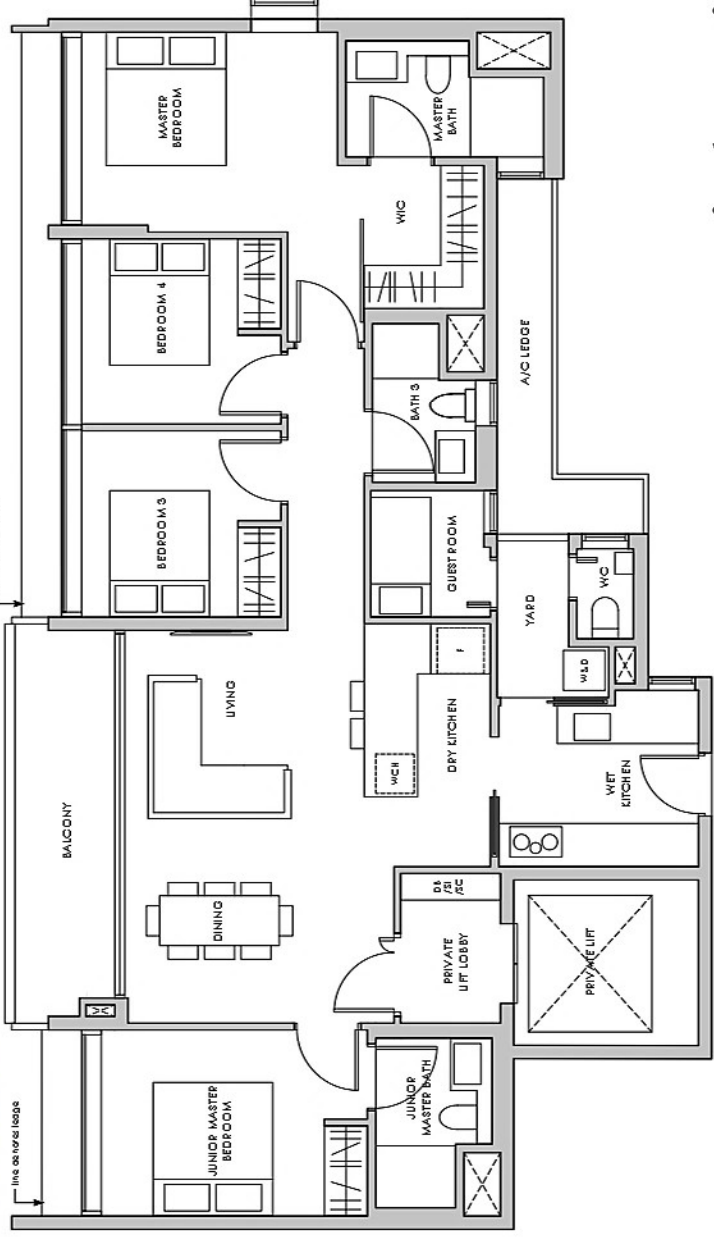


All plans are subjected to amendments as may be approved by the relevant authorities. Floor areas are approximate measurements and are subjected to final survey. The balcony shall not be enclosed. Only approved balcony screens are to be used. For illustration of the approved balcony screen, please refer to the diagram annexed hereto as "Annexure".

TYPE DSG2(P)



TYPE DSG2



TYPE DSG2(P)

143 sq m / 1539 sq ft
 INCLUSIVE OF 10 SQM PES,
 8 SQM A/C LEDGE
 & PRIVATE LIFT LOBBY 3 SQM

BLK 20 #04-63

TYPE DSG2

143 sq m / 1539 sq ft
 INCLUSIVE OF 10 SQM BALCONY,
 8 SQM A/C LEDGE
 & PRIVATE LIFT LOBBY 3 SQM

BLK 20 #05-63 TO #10-63



LEGEND:
 WIC - Walk-in-Closet
 F - Fridge

SC - Shoe Cabinet
 W&D - Washer & Dryer

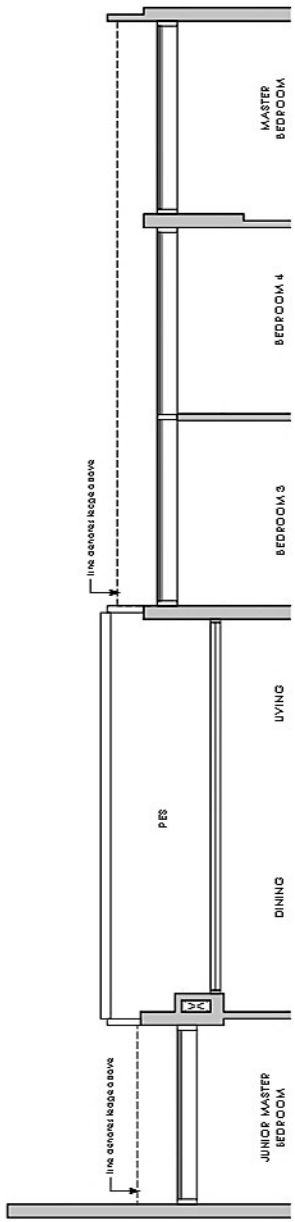
DB/ST - Distribution Board/Store
 WCH - Wine Chiller

* MIRROR IMAGE
 KEY PLAN
 NOT TO SCALE

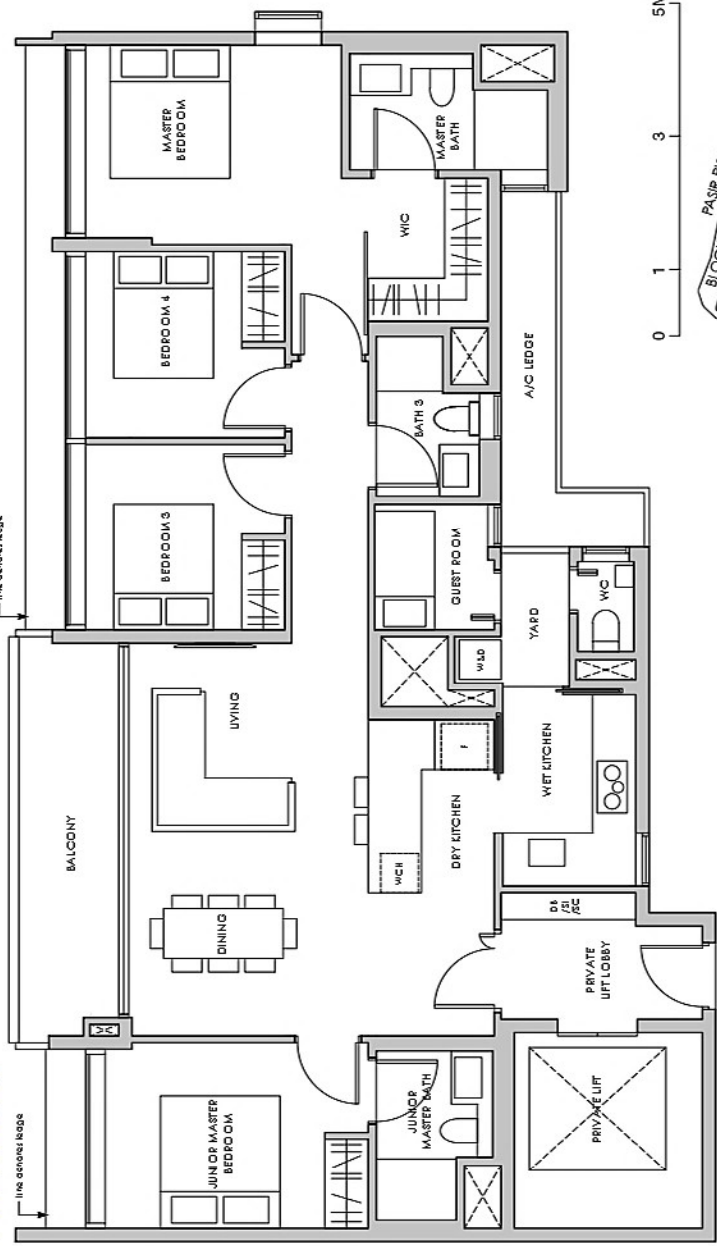
All plans are subjected to amendments as may be approved by the relevant authorities. Floor areas are approximate measurements and are subjected to final survey. The balcony shall not be enclosed. Only approved balcony screens are to be used. For illustration of the approved balcony screen, please refer to the diagram annexed hereto as "Annexure".

4-Bedroom Suite + Guest (with Private Lift)

TYPE DSG1(P)



TYPE DSG1



TYPE DSG1(P)

144 sq m / 1550 sq ft
 INCLUSIVE OF 10 SQM PES,
 8 SQM A/C LEDGE
 & PRIVATE LIFT LOBBY 5 SQM

BLK 10 #04-10

TYPE DSG1

144 sq m / 1550 sq ft
 INCLUSIVE OF 10 SQM BALCONY,
 8 SQM A/C LEDGE
 & PRIVATE LIFT LOBBY 5 SQM

BLK 10 #05-10 TO #10-10



LEGEND:
 WIC - Walk-in-Closet
 F - Fridge

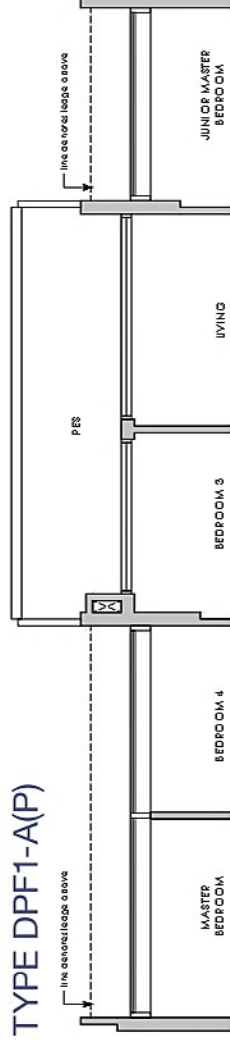
SC - Shoe Cabinet
 W&D - Washer & Dryer

DB/ST - Distribution Board/Store
 WCH - Wine Chiller

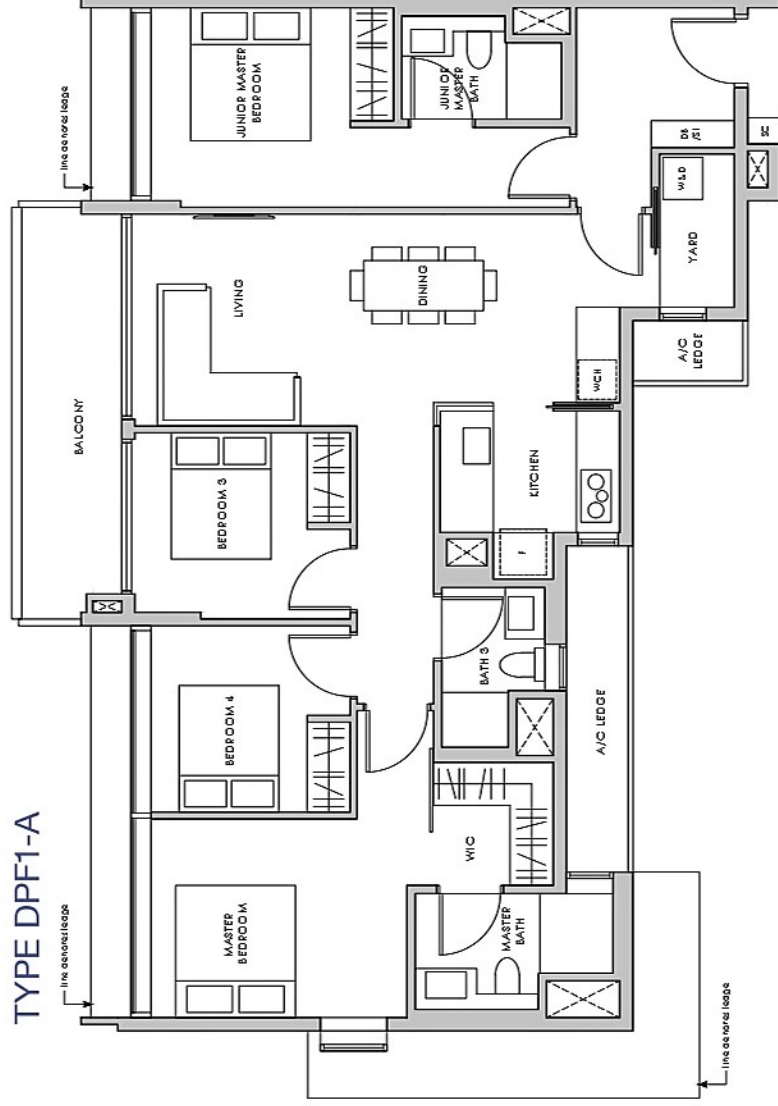
* MIRROR IMAGE

All plans are subjected to amendments as may be approved by the relevant authorities. Floor areas are approximate measurements and are subjected to final survey. The balcony shall not be enclosed. Only approved balcony screens are to be used. For illustration of the approved balcony screen, please refer to the diagram annexed hereto as "Annexure".

TYPE DPF1-A(P)



TYPE DPF1-A



TYPE DPF1-A(P)

136 sq m / 1464 sq ft
 INCLUSIVE OF 10 SQM PES
 & 8 SQM A/C LEDGE

BLK 10 #04-17

TYPE DPF1-A

136 sq m / 1464 sq ft
 INCLUSIVE OF 10 SQM BALCONY
 & 8 SQM A/C LEDGE

BLK 10 #05-17 TO #07-17 & #10-17



LEGEND:
 WIC - Walk-in-Closet
 F - Fridge

SC - Shoe Cabinet
 W&D - Washer & Dryer

DB/ST - Distribution Board/Store
 WCH - Wine Chiller

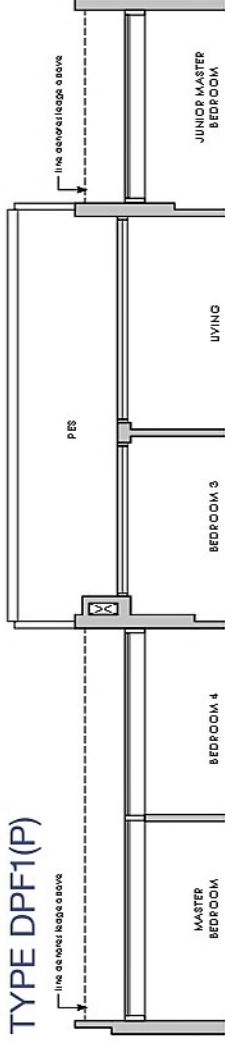
* MIRROR IMAGE

KEY PLAN
 NOT TO SCALE

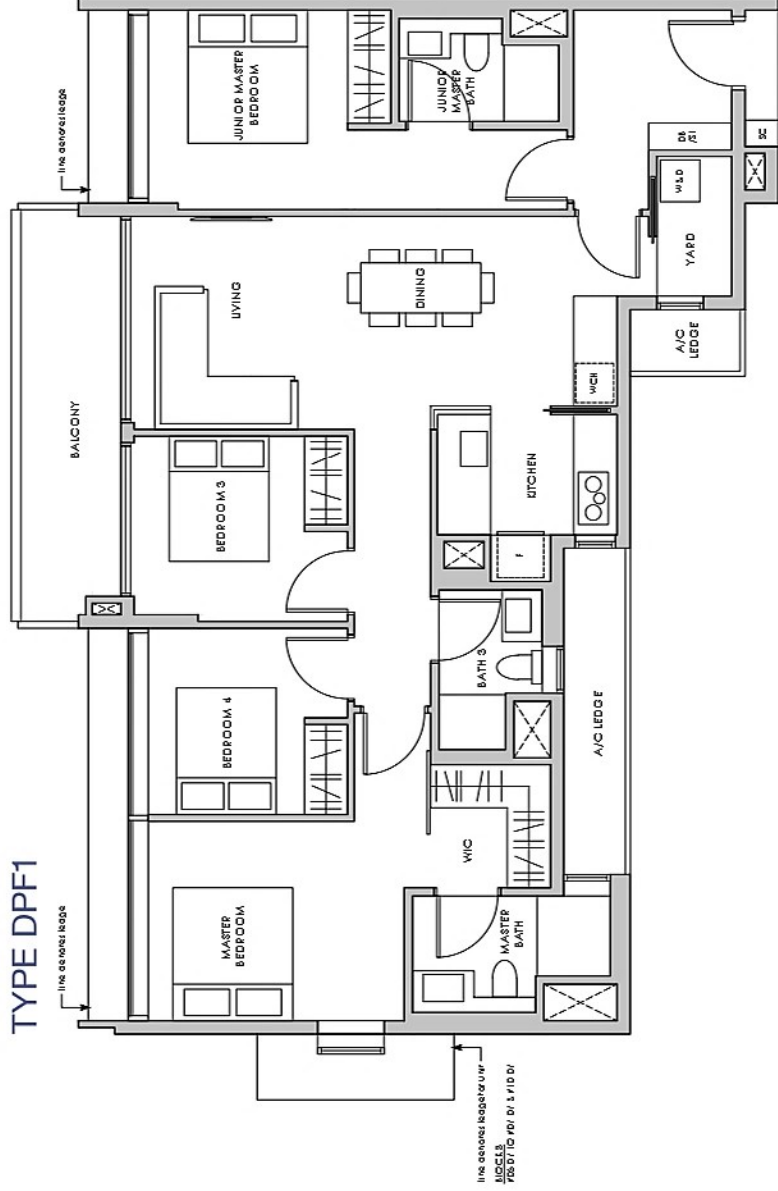
All plans are subjected to amendments as may be approved by the relevant authorities. Floor areas are approximate measurements and are subjected to final survey. The balcony shall not be enclosed. Only approved balcony screens are to be used. For illustration of the approved balcony screen, please refer to the diagram annexed hereto as "Annexure".

4-Bedroom Premium Flexi

TYPE DPF1(P)



TYPE DPF1



TYPE DPF1(P)

136 sq m / 1464 sq ft
INCLUSIVE OF 10 SQM PES
& 8 SQM A/C LEDGE

BLK 8 #04-07
BLK 18 #04-54*

TYPE DPF1

136 sq m / 1464 sq ft
INCLUSIVE OF 10 SQM BALCONY
& 8 SQM A/C LEDGE

BLK 8 #05-07 TO #07-07 & #10-07
BLK 18 #05-54* TO #07-54*, #10-54* & #11-54*



LEGEND:
WIC - Walk-in-Closet
F - Fridge

SC - Shoe Cabinet
W&D - Washer & Dryer

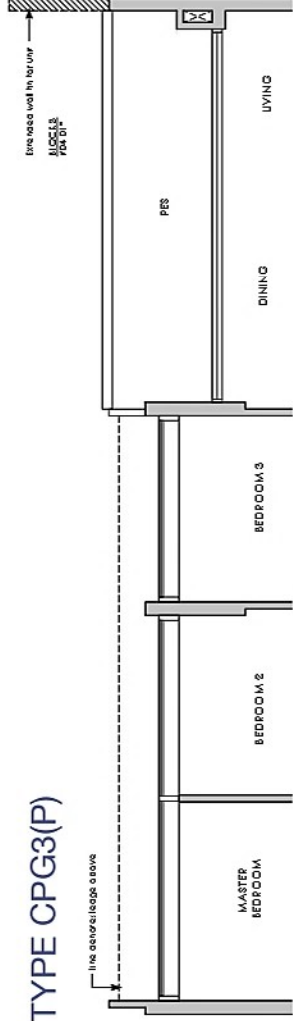
DB/ST - Distribution Board/Store
WCH - Wine Chiller

* MIRROR IMAGE

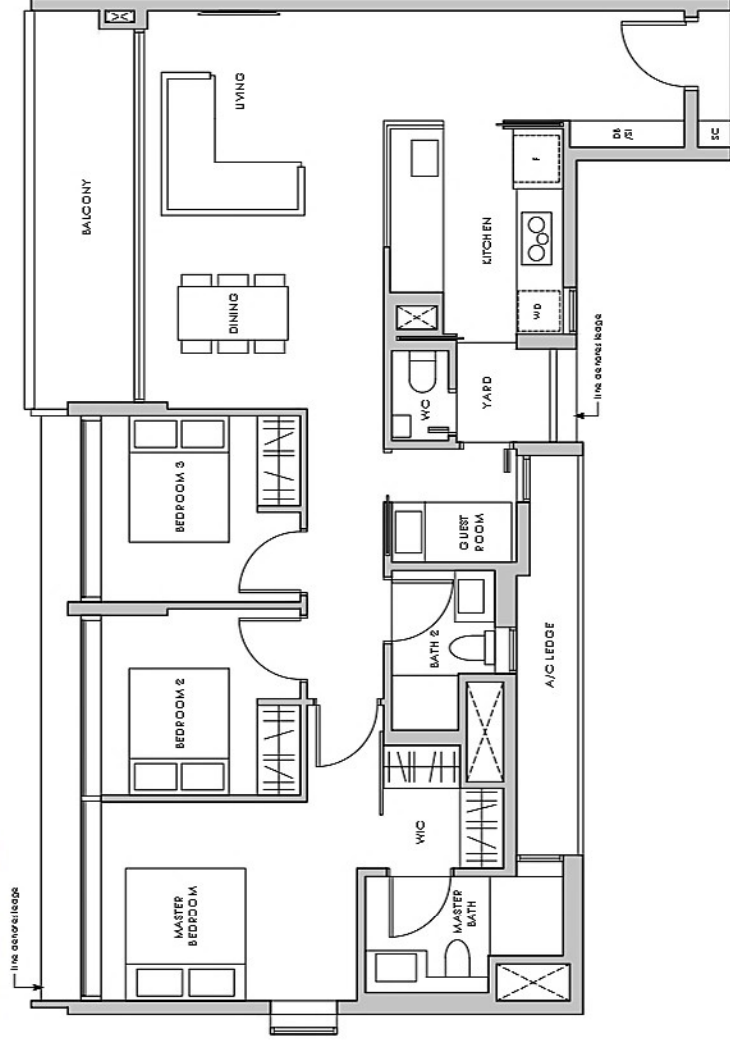
KEY PLAN
NOT TO SCALE

All plans are subjected to amendments as may be approved by the relevant authorities. Floor areas are approximate measurements and are subjected to final survey. *The balcony shall not be enclosed. Only approved balcony screens are to be used. For illustration of the approved balcony screen, please refer to the diagram annexed hereto as "Annexure".

TYPE CPG3(P)



TYPE CPG3



TYPE CPG3(P)

121 sq m / 1302 sq ft
 INCLUSIVE OF 10 SQM PES
 & 7 SQM A/C LEDGE

- BLK 8 #04-01*
- #04-02
- #04-06*
- BLK 10 #04-11
- BLK 12 #04-21
- BLK 16 #04-41

TYPE CPG3

121 sq m / 1302 sq ft
 INCLUSIVE OF 10 SQM BALCONY
 & 7 SQM A/C LEDGE

- BLK 8 #05-01* TO #10-01*
- #05-02 TO #10-02
- #05-06* TO #10-06*
- BLK 10 #05-11 TO #10-11
- BLK 12 #05-21 TO #11-21
- BLK 14 #05-35* TO #11-35*
- #05-36 TO #11-36
- BLK 16 #05-41 TO #11-41

LEGEND:
 WIC - Walk-in-Closet
 F - Fridge
 SC - Shoe Cabinet
 WD - Washer cum Dryer

DB/ST - Distribution Board/Store

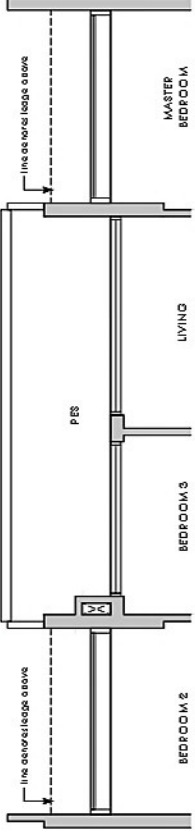
* MIRROR IMAGE



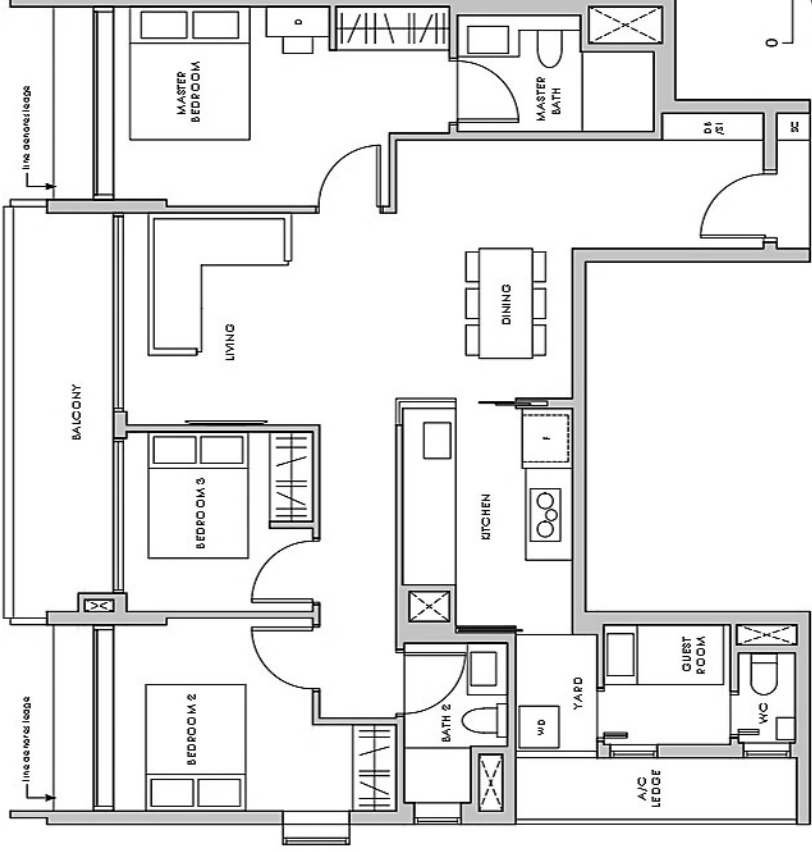
All plans are subjected to amendments as may be approved by the relevant authorities. Floor areas are approximate measurements and are subjected to final survey. *The balcony shall not be enclosed. Only approved balcony screens are to be used. For illustration of the approved balcony screen, please refer to the diagram annexed hereto as "Annexure".

3-Bedroom Premium + Guest

TYPE CPG2(P)



TYPE CPG2



TYPE CPG2(P)

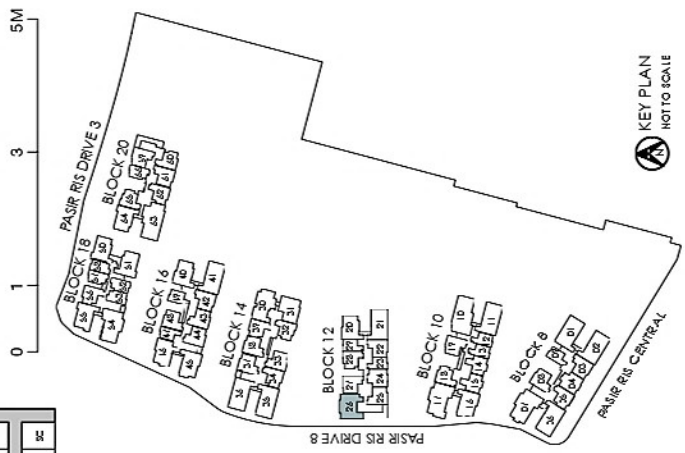
117 sq m / 1259 sq ft
 INCLUSIVE OF 10 SQM PES
 & 5 SQM A/C LEDGE

BLK 12 #04-26

TYPE CPG2

117 sq m / 1259 sq ft
 INCLUSIVE OF 10 SQM BALCONY
 & 5 SQM A/C LEDGE

BLK 12 #05-26 TO #11-26

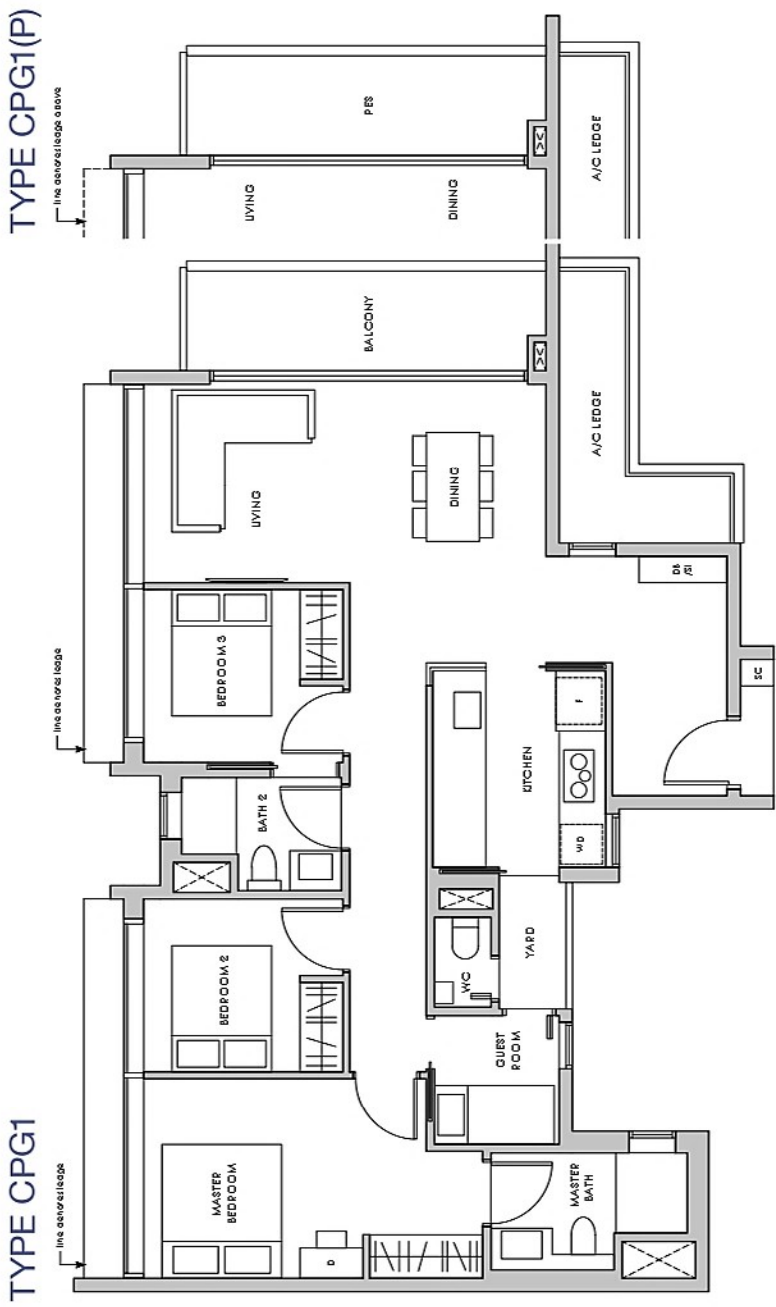


- LEGEND:**
 D - Dresser
 F - Fridge
 SC - Shoe Cabinet
 WB - Washer cum Dryer
 DB/ST - Distribution Board/Store

* MIRROR IMAGE
 KEY PLAN
 NOT TO SCALE

All plans are subjected to amendments as may be approved by the relevant authorities. Floor areas are approximate measurements and are subjected to final survey. The balcony shall not be enclosed. Only approved balcony screens are to be used. For illustration of the approved balcony screen, please refer to the diagram annexed hereto as "Annexure".

3-Bedroom Premium + Guest



TYPE CPG1(P)

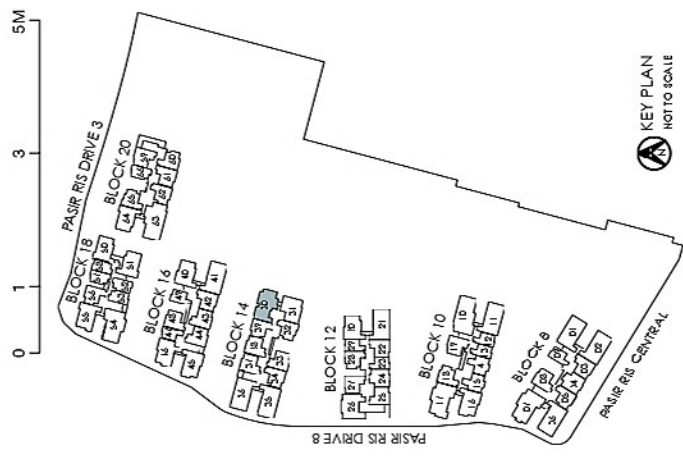
119 sq m / 1281 sq ft
 INCLUSIVE OF 10 SQM PES
 & 6 SQM A/C LEDGE

BLK 14 #04-30

TYPE CPG1

119 sq m / 1281 sq ft
 INCLUSIVE OF 10 SQM BALCONY
 & 6 SQM A/C LEDGE

BLK 14 #05-30 TO #11-30



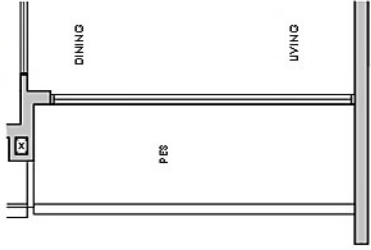
LEGEND:
 D - Dresser
 F - Fridge
 SC - Shoe Cabinet
 WD - Washer cum Dryer
 DB/ST - Distribution Board/Store

* MIRROR IMAGE

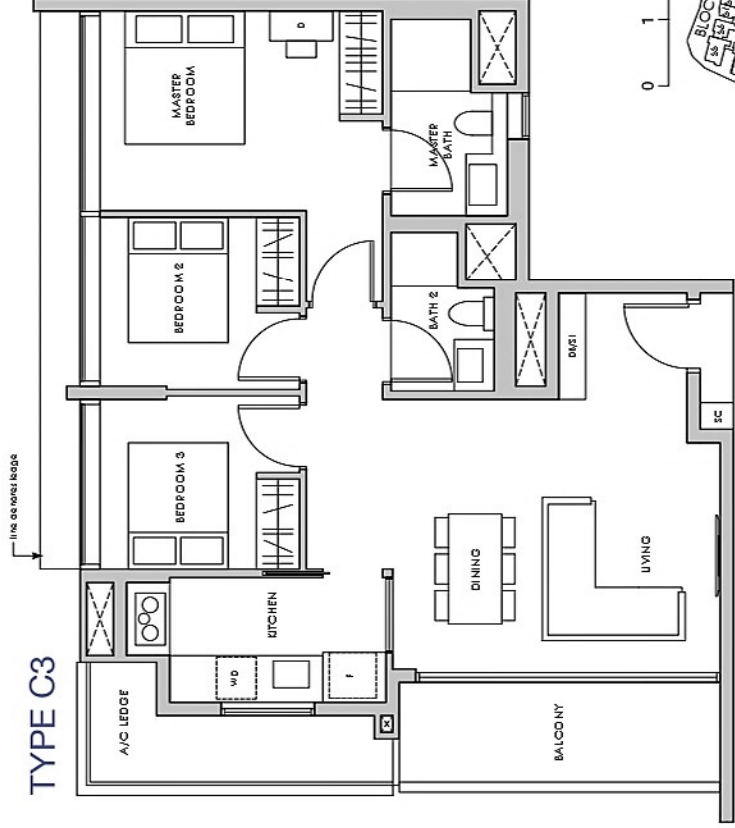
All plans are subjected to amendments as may be approved by the relevant authorities. Floor areas are approximate measurements and are subjected to final survey. The balcony shall not be enclosed. Only approved balcony screens are to be used. For illustration of the approved balcony screen, please refer to the diagram annexed hereto as "Annexure".

3-Bedroom

TYPE C3(P)



TYPE C3



TYPE C3(P)

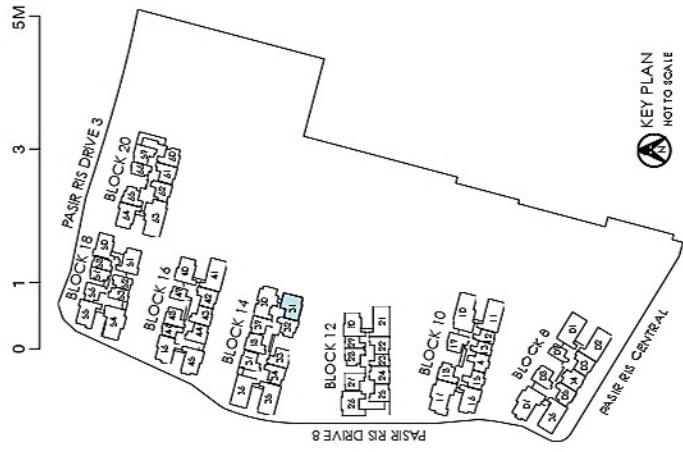
98 sq m / 1055 sq ft
 INCLUSIVE OF 9 SQM PES
 & 6 SQM A/C LEDGE

BLK 14 #04-31

TYPE C3

98 sq m / 1055 sq ft
 INCLUSIVE OF 9 SQM BALCONY
 & 6 SQM A/C LEDGE

BLK 14 #05-31 TO #11-31



LEGEND:
 D - Dresser
 F - Fridge

SC - Shoe Cabinet
 WD - Washer cum Dryer

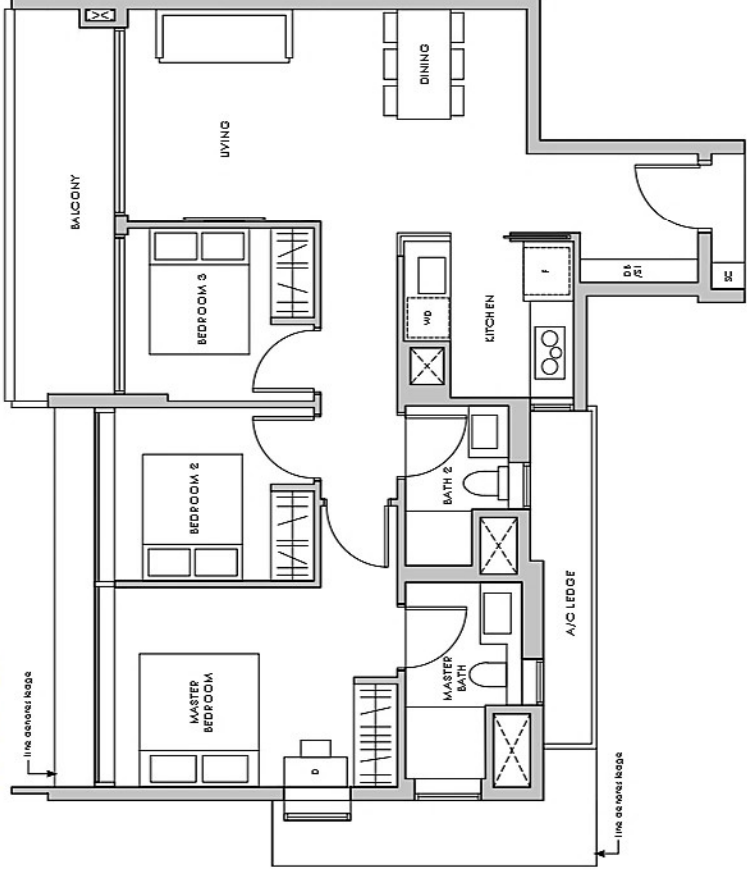
DB/ST - Distribution Board/Store

* MIRROR IMAGE

KEY PLAN
 NOT TO SCALE

All plans are subjected to amendments as may be approved by the relevant authorities. Floor areas are approximate measurements and are subjected to final survey. The balcony shall not be enclosed. Only approved balcony screens are to be used. For illustration of the approved balcony screen, please refer to the diagram annexed hereto as "Annexure".

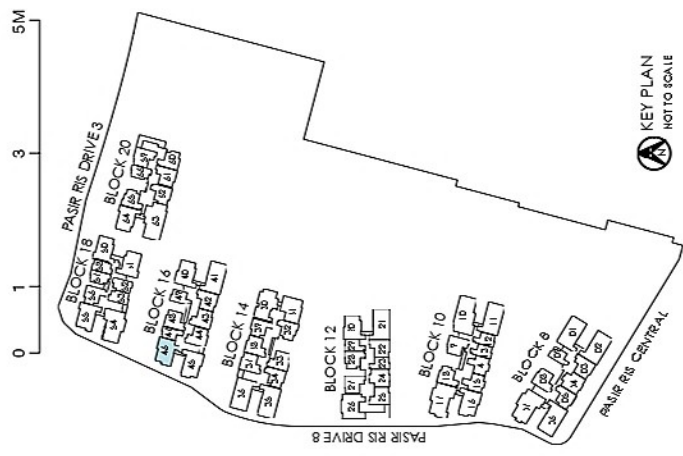
TYPE C2



TYPE C2

98 sq m / 1055 sq ft
 INCLUSIVE OF 10 SQM BALCONY
 & 5 SQM A/C LEDGE

BLK 16 #05-46 TO #11-46



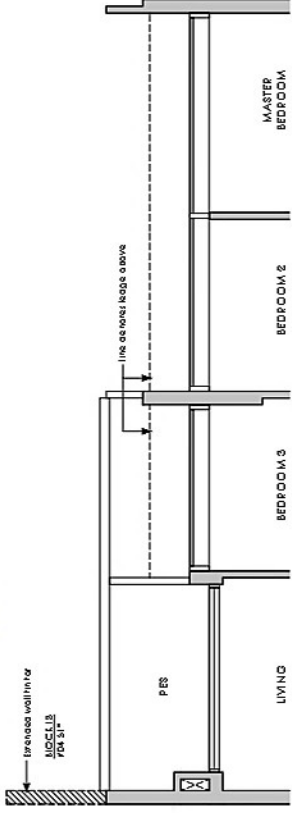
- LEGEND:**
 D - Dresser
 F - Fridge
 SC - Shoe Cabinet
 DB/ST - Distribution Board/Store
 WD - Washer cum Dryer

* MIRROR IMAGE

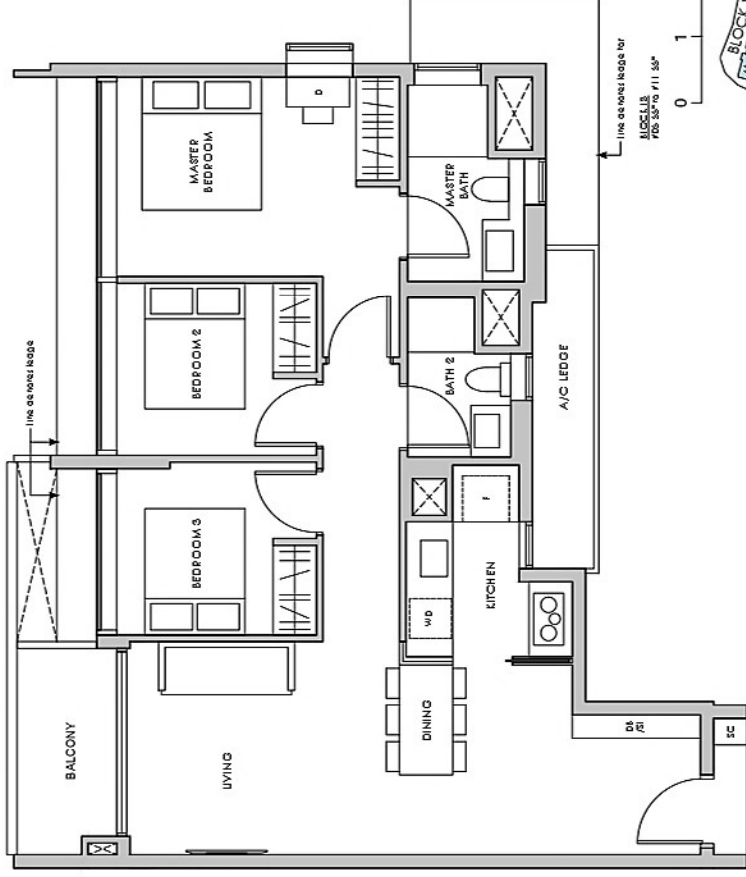
All plans are subjected to amendments as may be approved by the relevant authorities. Floor areas are approximate measurements and are subjected to final survey. The balcony shall not be enclosed. Only approved balcony screens are to be used. For illustration of the approved balcony screen, please refer to the diagram annexed hereto as "Annexure".

3-Bedroom

TYPE C1-A(P)



TYPE C1-A



TYPE C1-A(P)

95 sq m / 1023 sq ft
 INCLUSIVE OF 5 SQM PES
 & 5 SQM A/C LEDGE

BLK 18 #04-50
 #04-51*
 #04-55*
 BLK 20 #04-64*

TYPE C1-A

95 sq m / 1023 sq ft
 INCLUSIVE OF 5 SQM BALCONY
 & 5 SQM A/C LEDGE

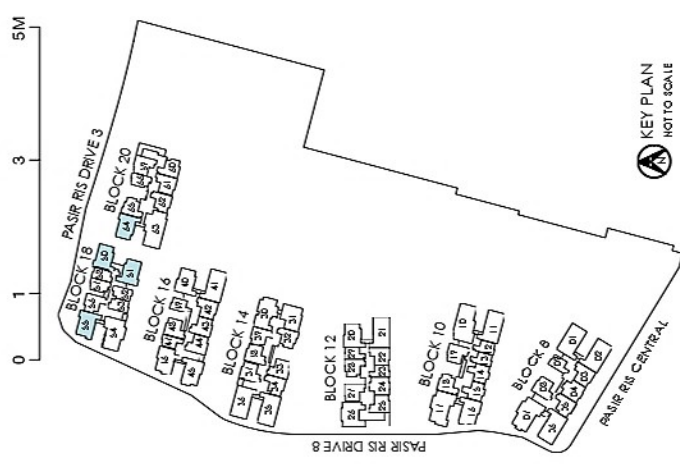
BLK 18 #05-50 TO #11-50
 #05-51* TO #11-51*
 #05-55* TO #11-55*
 BLK 20 #05-64* TO #07-64* & #10-64*

LEGEND:
 D - Dresser
 F - Fridge

SC - Shoe Cabinet
 WD - Washer cum Dryer

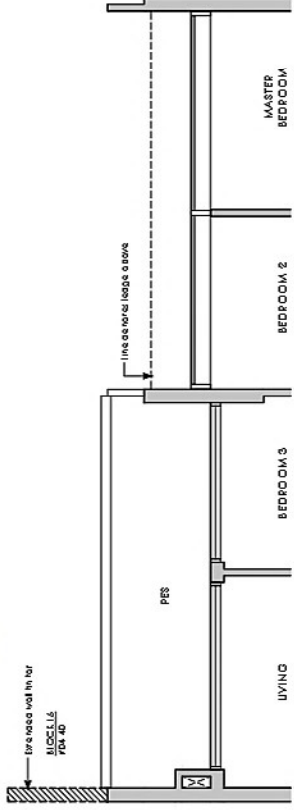
DB/ST - Distribution Board/Store

* MIRROR IMAGE

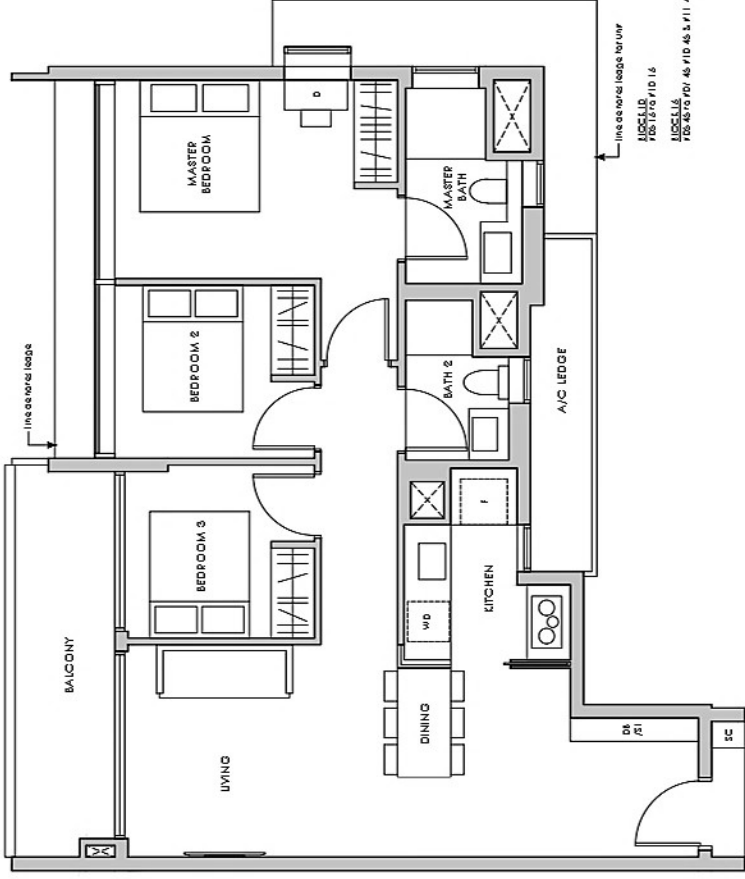


All plans are subjected to amendments as may be approved by the relevant authorities. Floor areas are approximate measurements and are subjected to final survey. *The balcony shall not be enclosed. Only approved balcony screens are to be used. For illustration of the approved balcony screen, please refer to the diagram annexed hereto as "Annexure".

TYPE C1(P)



TYPE C1



TYPE C1(P)

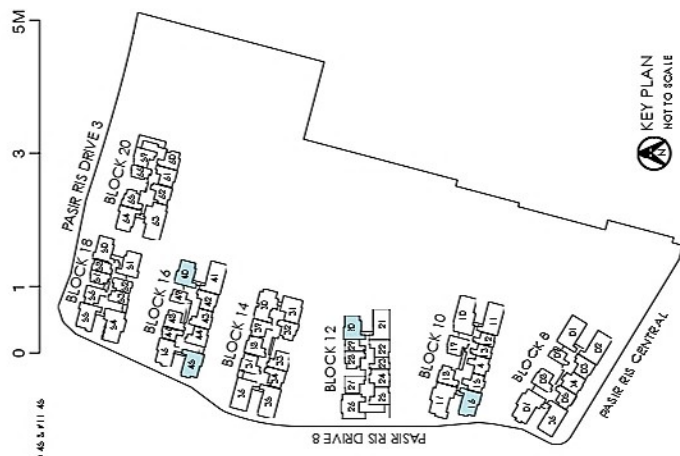
99 sq m / 1066 sq ft
INCLUSIVE OF 10 SQM PES
& 6 SQM A/C LEDGE

BLK 10 #04-16
BLK 12 #04-20
BLK 16 #04-40

TYPE C1

99 sq m / 1066 sq ft
INCLUSIVE OF 10 SQM BALCONY
& 6 SQM A/C LEDGE

BLK 10 #05-16 TO #10-16
BLK 12 #05-20 TO #11-20
BLK 16 #05-40 TO #11-40
#05-45 TO #07-45, #10-45 & #11-45



LEGEND:
D - Dresser
F - Fridge

SC - Shoe Cabinet
WD - Washer cum Dryer

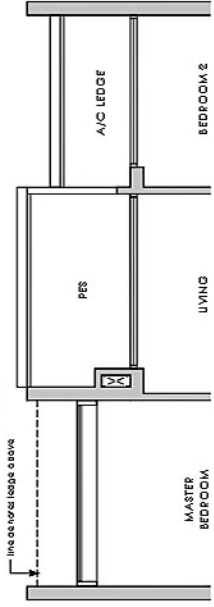
DB/ST - Distribution Board/Store

* MIRROR IMAGE

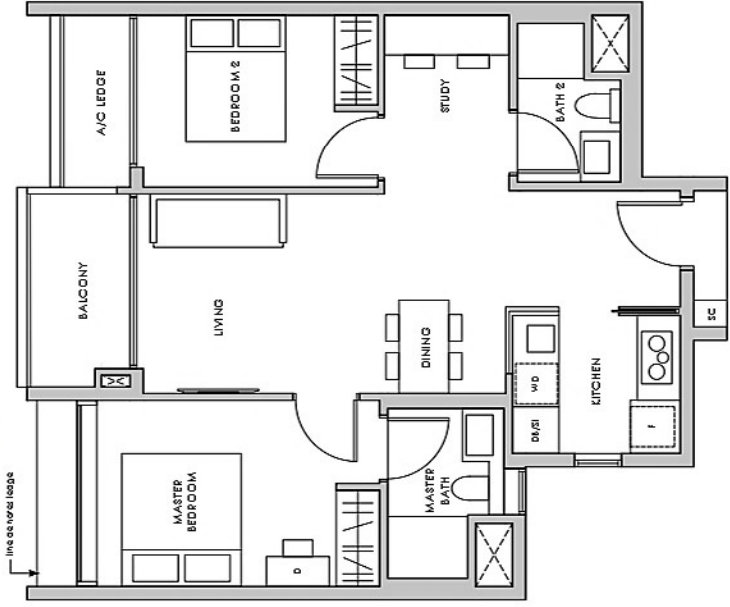
All plans are subjected to amendments as may be approved by the relevant authorities. Floor areas are approximate measurements and are subjected to final survey. The balcony shall not be enclosed. Only approved balcony screens are to be used. For illustration of the approved balcony screen, please refer to the diagram annexed hereto as "Annexure".

2-Bedroom Premium + Study

TYPE BPS1(P)



TYPE BPS1



TYPE BPS1(P)

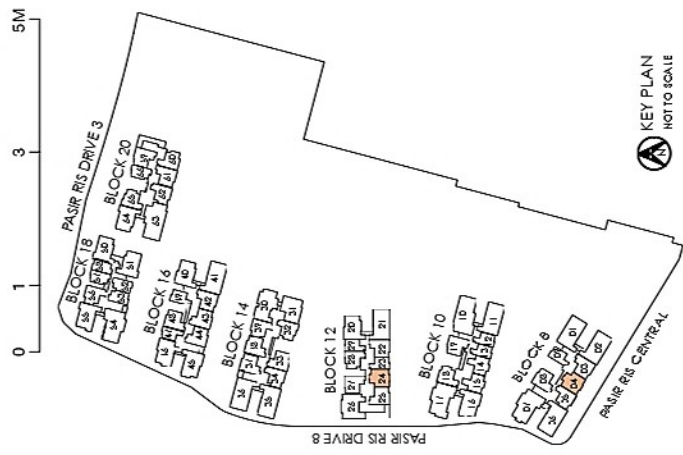
77 sq m / 829 sq ft
 INCLUSIVE OF 5 SQM PES
 & 3 SQM A/C LEDGE

BLK 8 #04-04
 BLK 12 #04-24*

TYPE BPS1

77 sq m / 829 sq ft
 INCLUSIVE OF 5 SQM BALCONY
 & 3 SQM A/C LEDGE

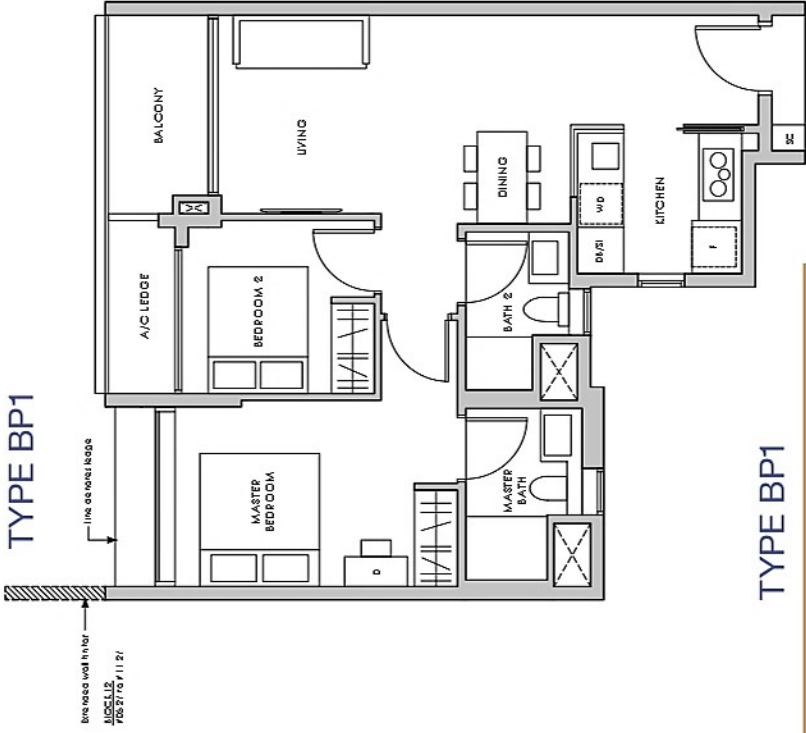
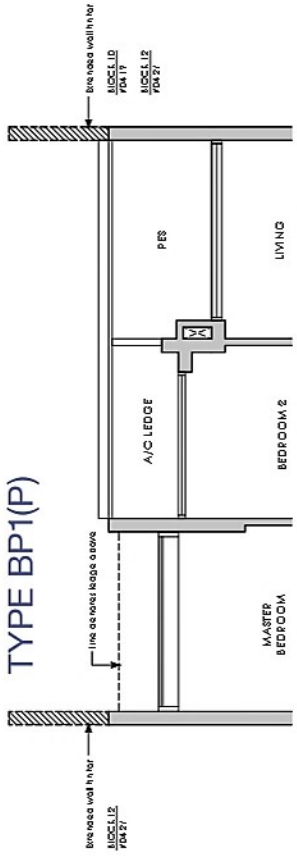
BLK 8 #05-04 TO #10-04
 BLK 12 #05-24* TO #11-24*



* MIRROR IMAGE

LEGEND:
 D - Dresser
 F - Fridge
 SC - Shoe Cabinet
 DB/ST - Distribution Board/Store
 WD - Washer cum Dryer

All plans are subjected to amendments as may be approved by the relevant authorities. Floor areas are approximate measurements and are subjected to final survey. *The balcony shall not be enclosed. Only approved balcony screens are to be used. For illustration of the approved balcony screen, please refer to the diagram annexed hereto as "Annexure".



TYPE BP1(P)

72 sq m / 775 sq ft
INCLUSIVE OF 5 SQM PES
& 3 SQM A/C LEDGE

- BLK 8 #04-03*
#04-08*
- BLK 10 #04-19
- BLK 12 #04-22*
#04-25
#04-27
- BLK 14 #04-33
#04-37*
#04-38*
- BLK 16 #04-42*
#04-43
#04-44
#04-48*
- BLK 20 #04-59
#04-61*

TYPE BP1

72 sq m / 775 sq ft
INCLUSIVE OF 5 SQM BALCONY
& 3 SQM A/C LEDGE

- BLK 8 #05-03* TO #10-03*
#05-08* TO #10-08*
- BLK 10 #05-19 TO #10-19
- BLK 12 #05-22* TO #11-22*
#05-25 TO #11-25
#05-27 TO #11-27
- BLK 14 #05-33 TO #11-33
#05-37* TO #11-37*
#05-38* TO #11-38*
- BLK 16 #05-42* TO #11-42*
#05-43 TO #11-43
#05-44 TO #11-44
#05-48* TO #11-48*
- BLK 20 #05-59 TO #10-59
#05-61* TO #10-61*

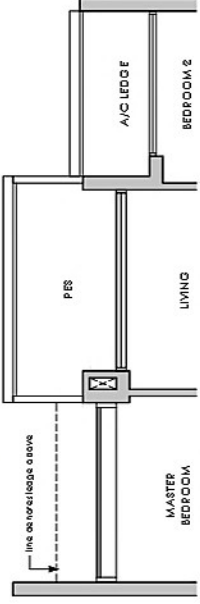


LEGEND:
D - Dresser
F - Fridge
SC - Shoe Cabinet
DB/ST - Distribution Board/Store
WD - Washer cum Dryer

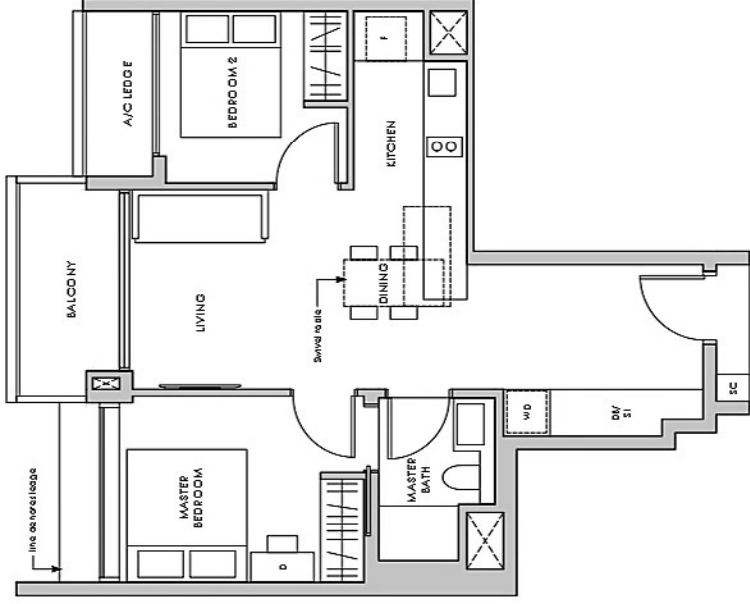
All plans are subjected to amendments as may be approved by the relevant authorities. Floor areas are approximate measurements and are subjected to final survey. The balcony shall not be enclosed. Only approved balcony screens are to be used. For illustration of the approved balcony screen, please refer to the diagram annexed hereto as "Annexure".

2-Bedroom

TYPE B3(P)



TYPE B3



TYPE B3(P)

66 sq m / 710 sq ft
INCLUSIVE OF 5 SQM PES
& 3 SQM A/C LEDGE

BLK 10 #04-14
#04-15*

TYPE B3

66 sq m / 710 sq ft
INCLUSIVE OF 5 SQM BALCONY
& 3 SQM A/C LEDGE

BLK 10 #05-14 TO #10-14
#05-15* TO #10-15*

LEGEND:
D - Dresser
F - Fridge

SC - Shoe Cabinet
WD - Washer cum Dryer

DB/ST - Distribution Board/Store

* MIRROR IMAGE



All plans are subjected to amendments as may be approved by the relevant authorities. Floor areas are approximate measurements and are subjected to final survey. The balcony shall not be enclosed. Only approved balcony screens are to be used. For illustration of the approved balcony screen, please refer to the diagram annexed hereto as "Annexure".