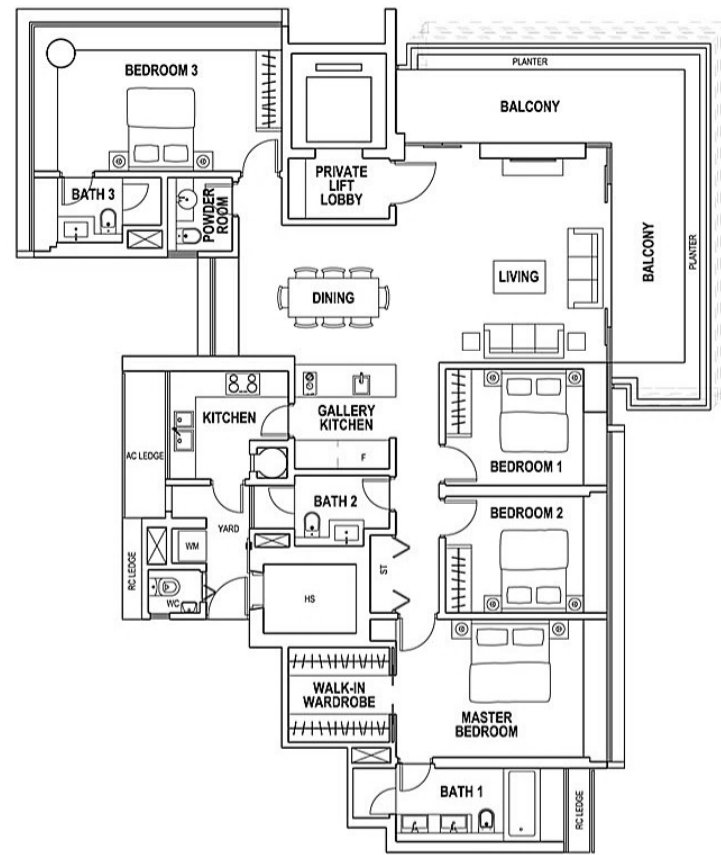
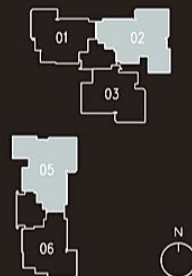


#02-05 to #21-05
201 sq m to 207 sq m /
2,164 sq ft to 2,228 sq ft



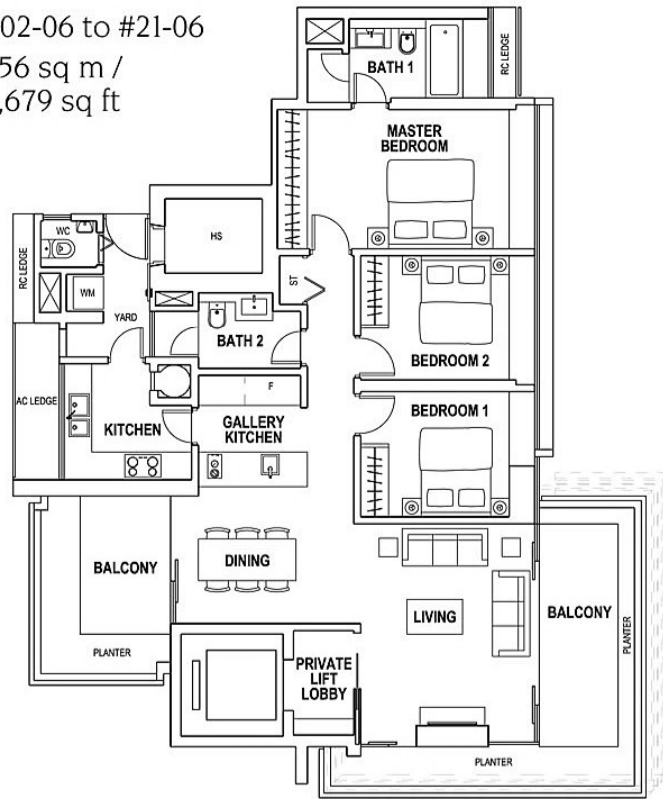
Type B1*: 4-Bedroom

* Unit #02 is a mirror image of B1

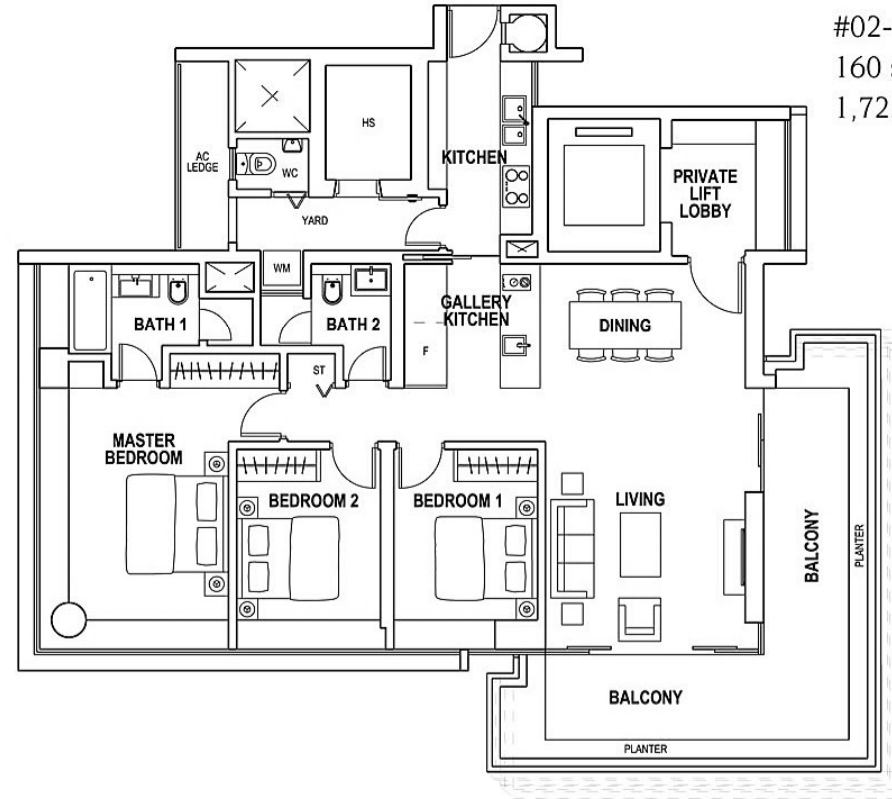


The above plans are subject to change as may be approved by the relevant authorities. Areas are approximate measurements and subject to final survey. Plans are not to scale.

#02-06 to #21-06
 156 sq m /
 1,679 sq ft

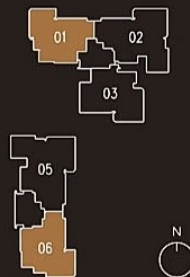


#02-03 to #20-03
 160 sq m to 165 sq m /
 1,722 sq ft to 1,776 sq ft

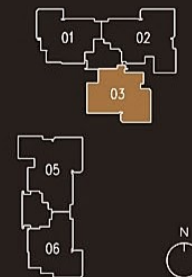


Type A1: 3-Bedroom*

* Unit #01 is a mirror image of A1



Type A3: 3-Bedroom



The above plans are subject to change as may be approved by the relevant authorities. Areas are approximate measurements and subject to final survey. Plans are not to scale.