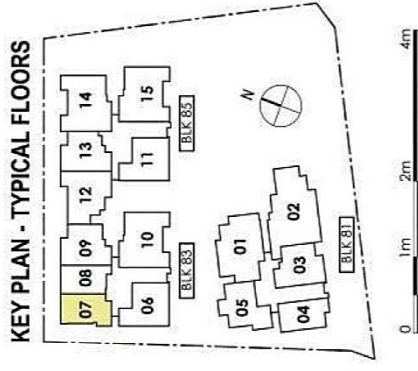
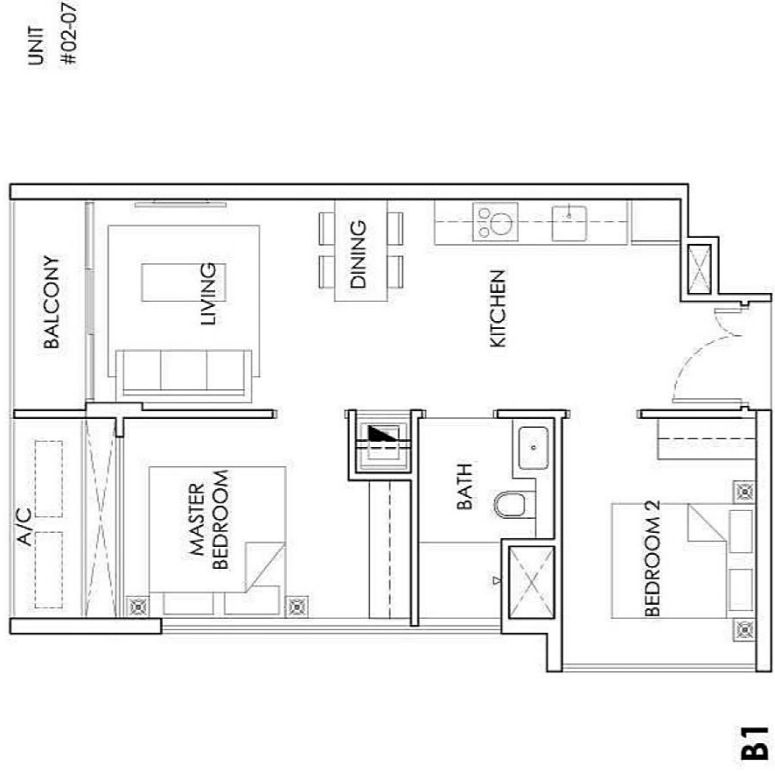
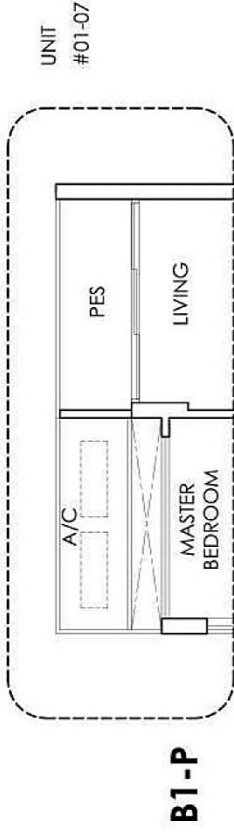
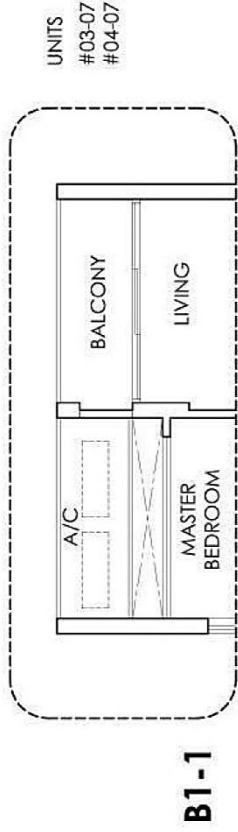
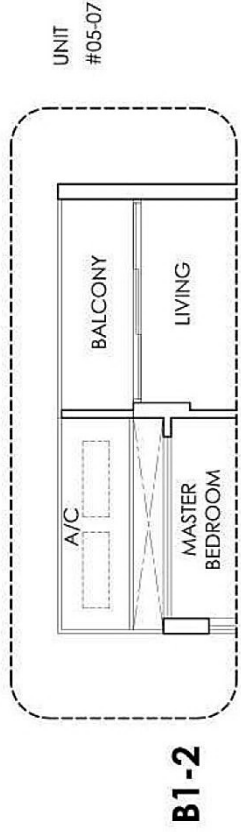


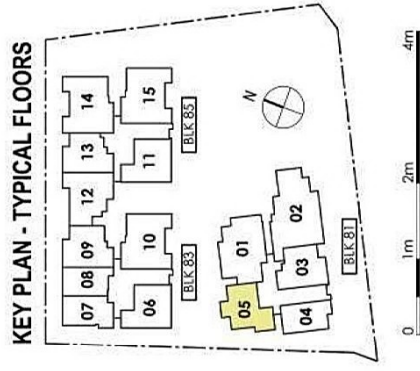
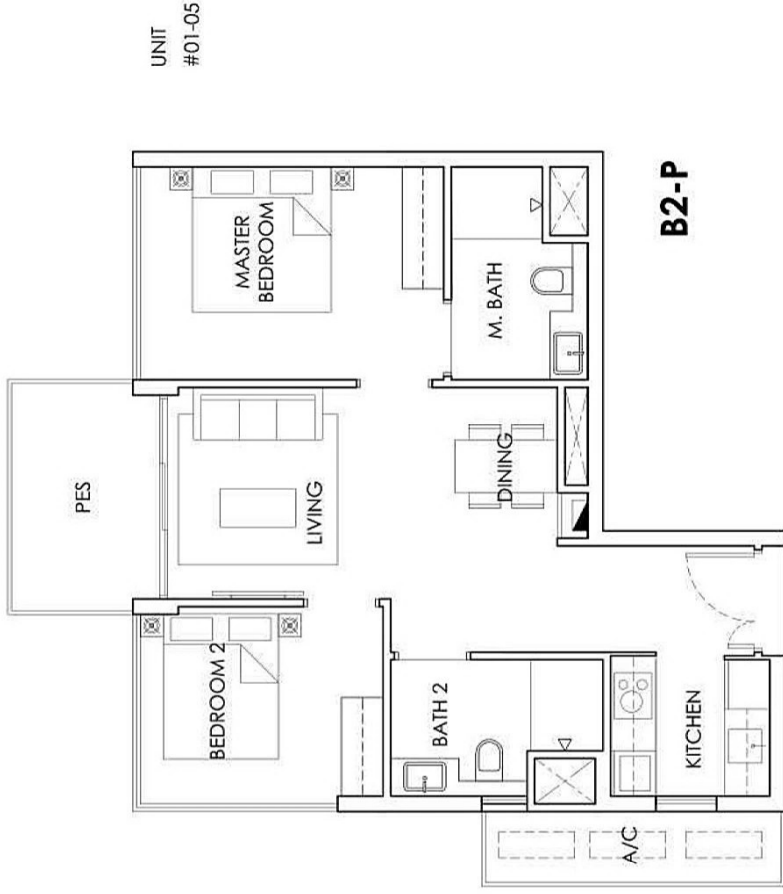
# TYPE B1, B1-P, B1-1 & B1-2

2 - BEDROOM  
56 sqm / 603 sqft



# TYPE B2 & B2-P

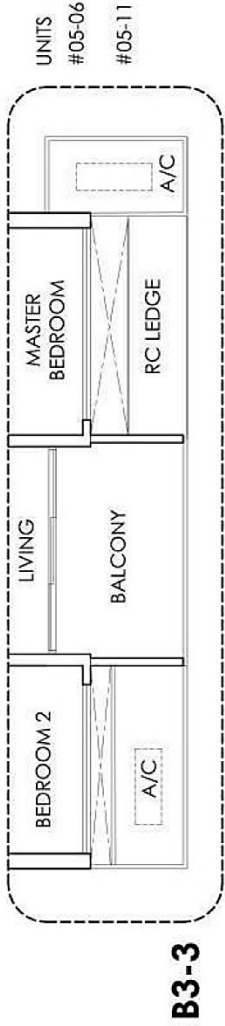
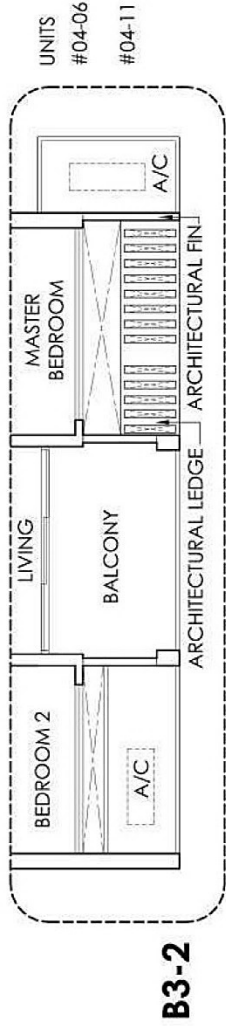
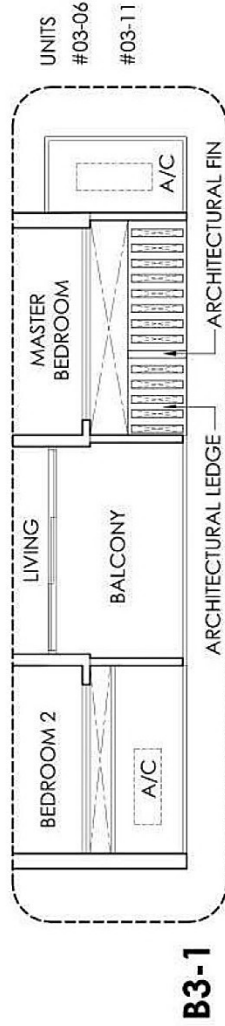
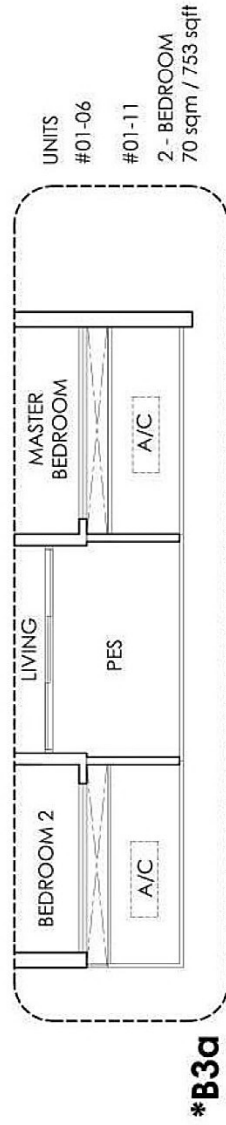
2 - BEDROOM  
68 sqm / 732 sqft



# TYPE B3, B3-1, B3-2, B3-3 & \*B3a

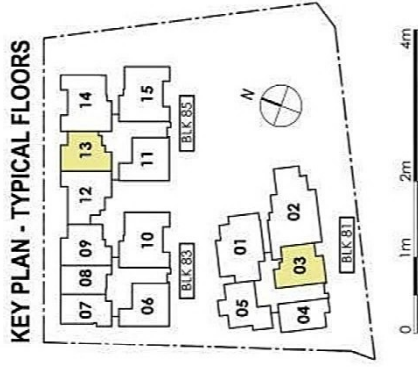
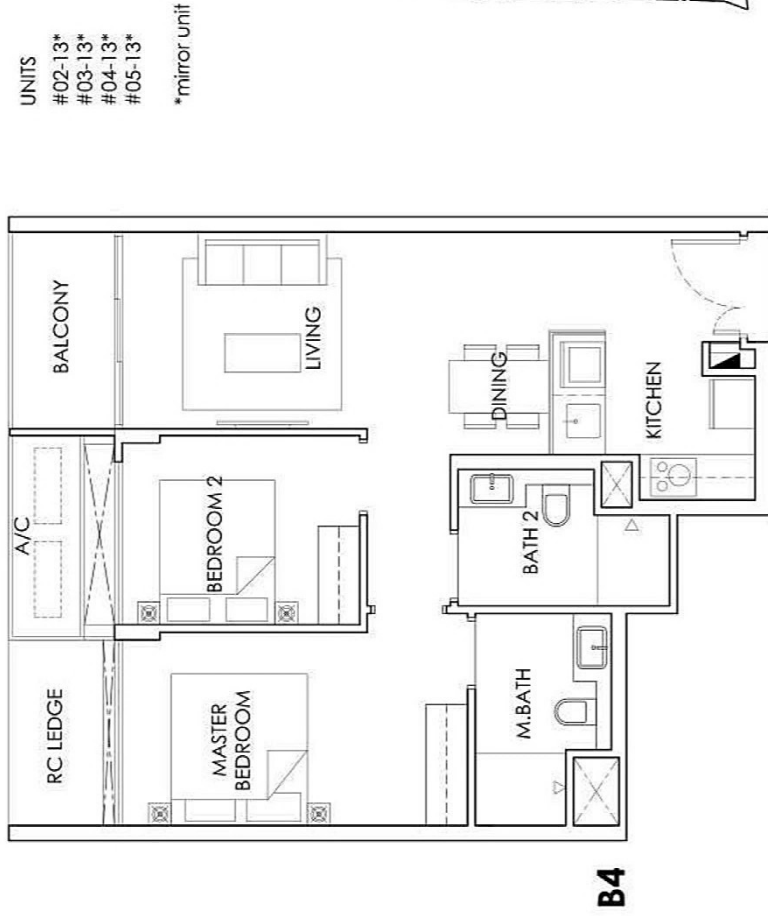
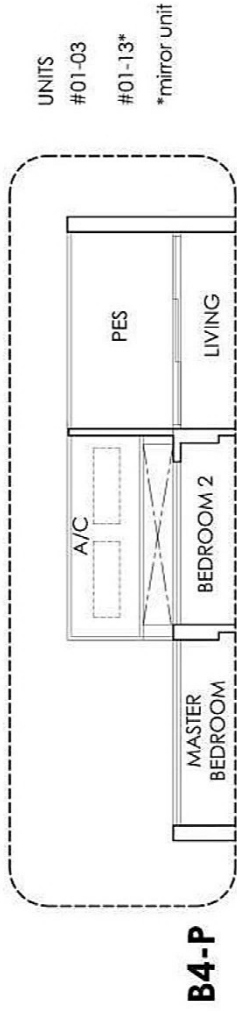
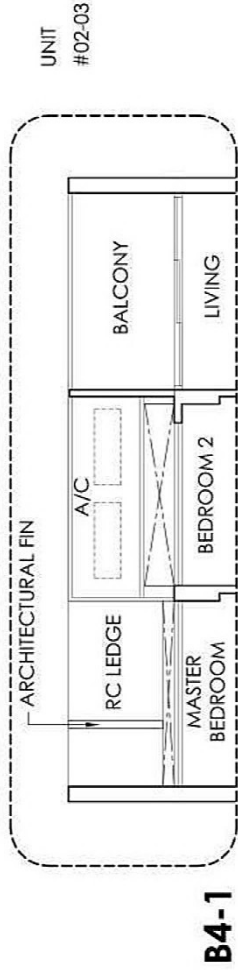
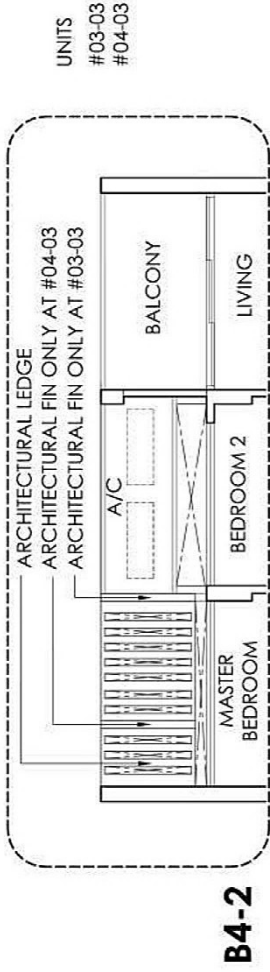
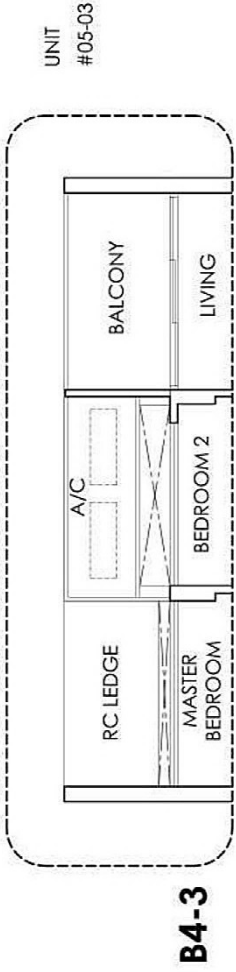
2 - BEDROOM

69 sqm / 743 sqft (Except Unit Type B3a)



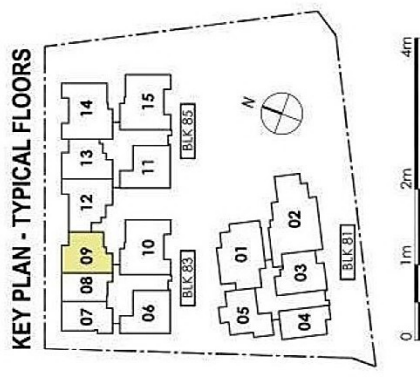
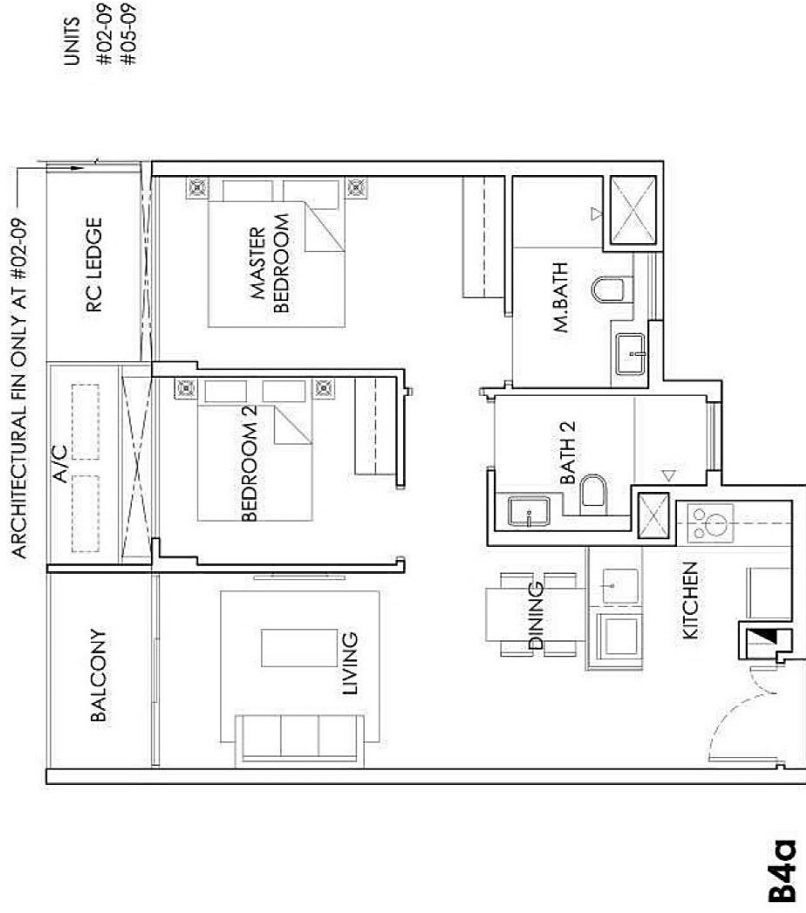
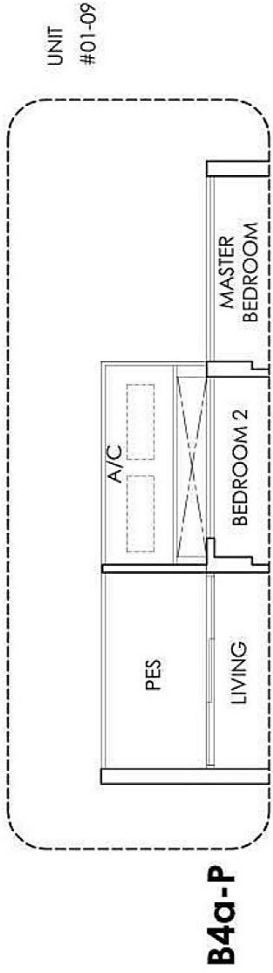
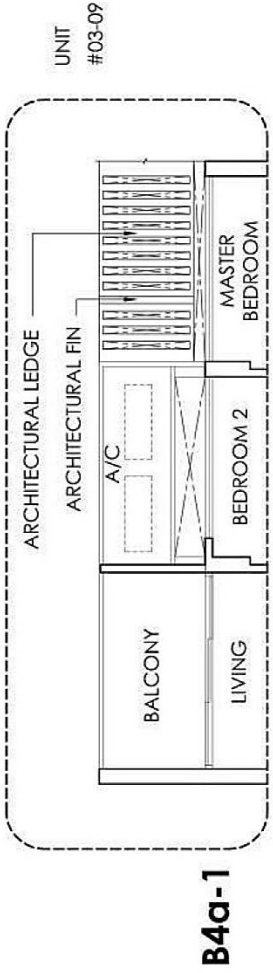
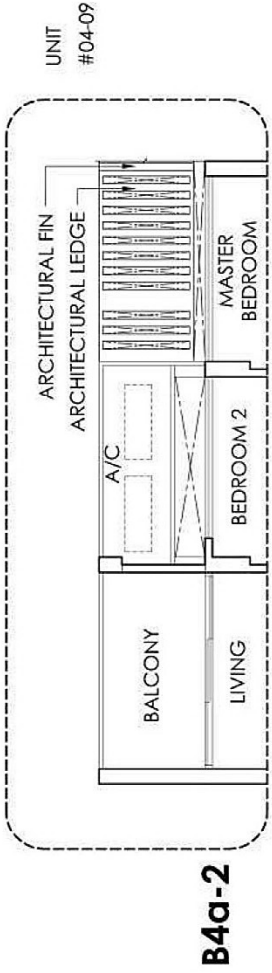
# TYPE B4, B4-P, B4-1, B4-2 & B4-3

2 - BEDROOM  
67 sqm / 721 sqft



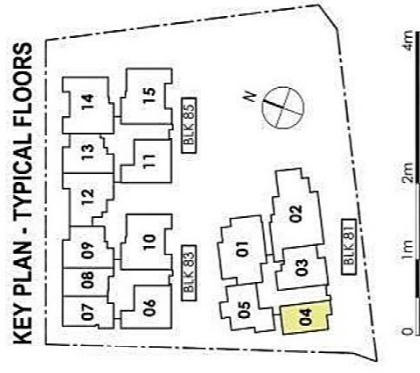
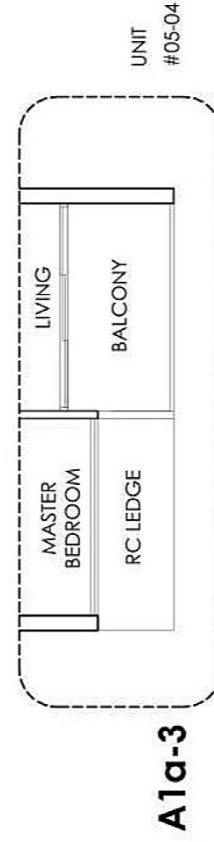
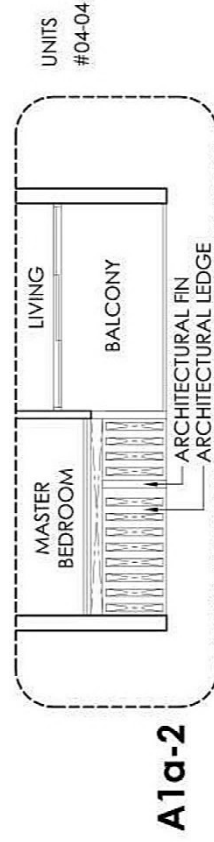
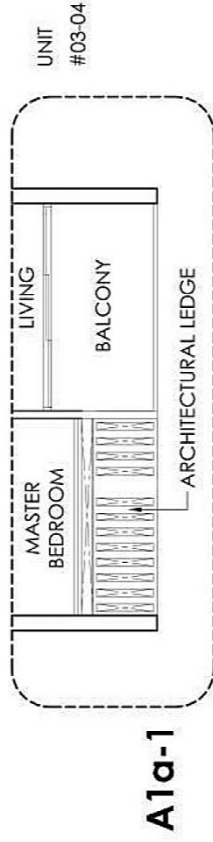
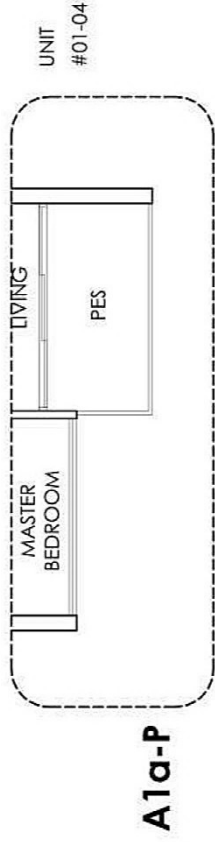
# TYPE B4a, B4a-P, B4a-1 & B4a-2

2 - BEDROOM  
67 sqm / 721 sqft



# TYPE A1a, A1a-P, A1a-1, A1a-2 & A1a-3

1+1 - BEDROOM  
54 sqm / 581 sqft



# TYPE A1 & A1-P

1+1 - BEDROOM  
52 sqm / 560 sqft



UNIT  
#01-08

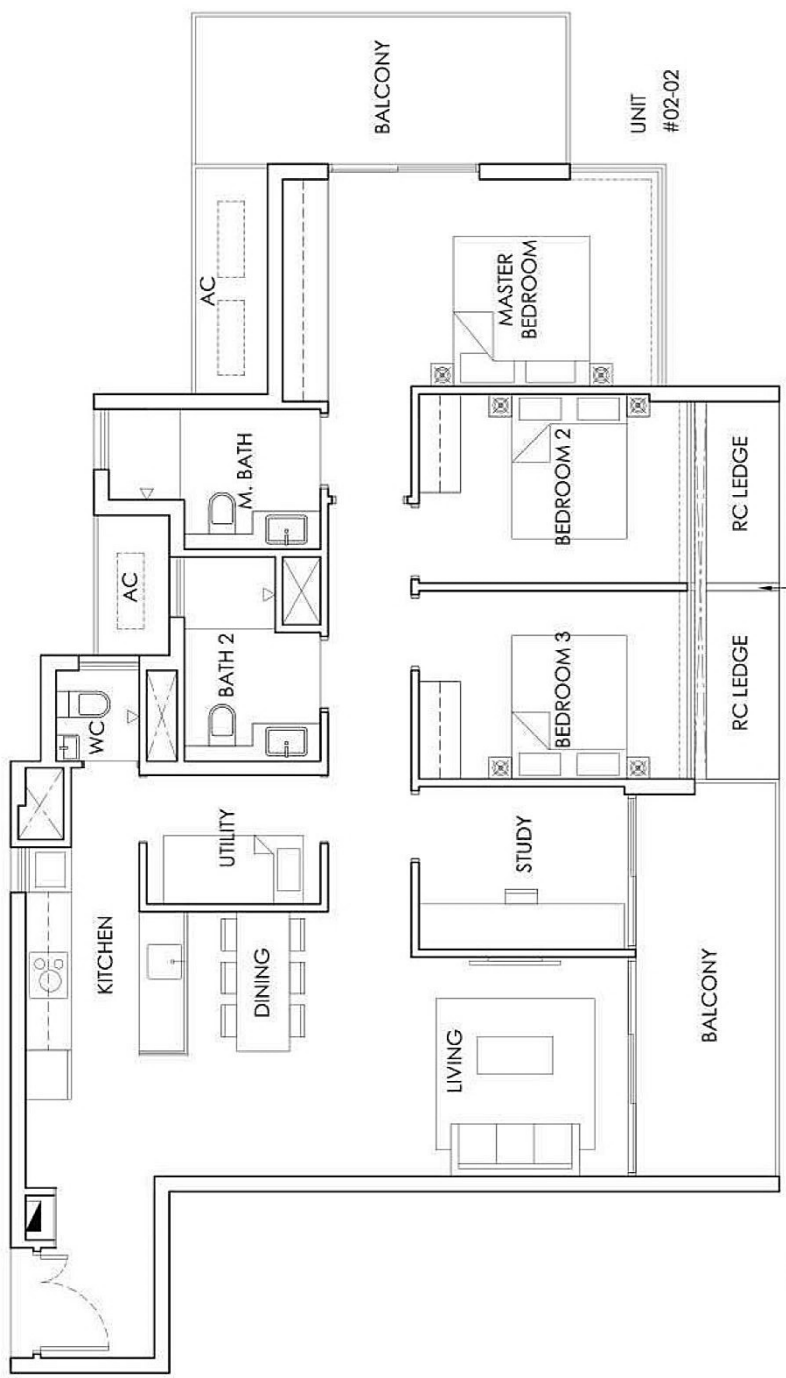


UNITS  
#02-08  
#03-08  
#04-08  
#05-08

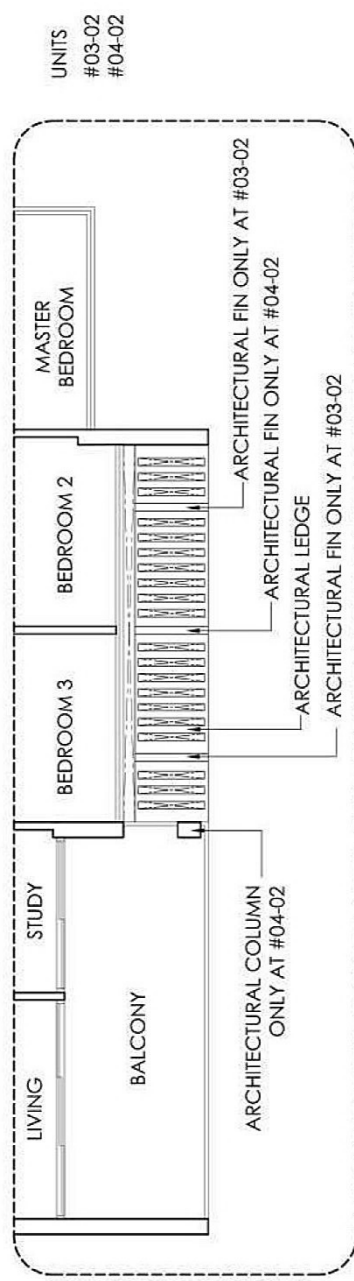


# TYPE D, D-1 & D-2

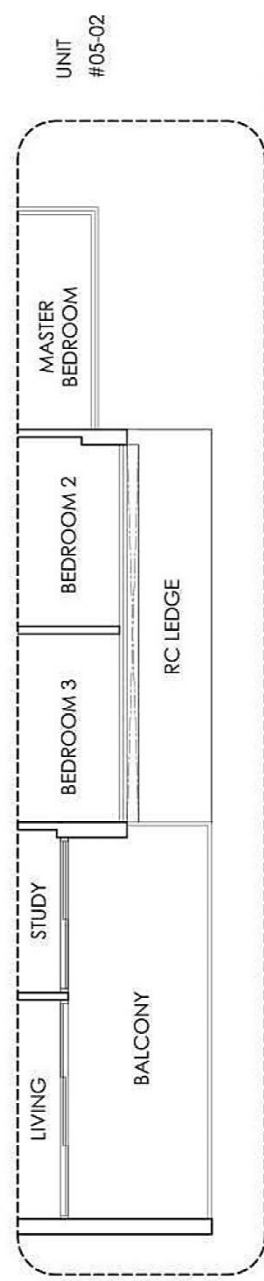
3+1 - BEDROOM  
127 sqm / 1367 sqft



**D**

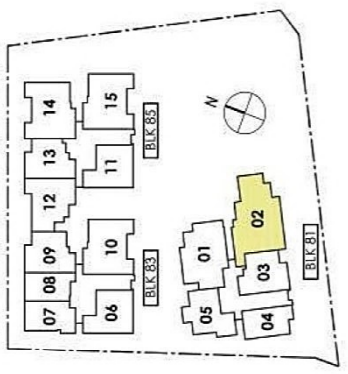


**D-1**



**D-2**

**KEY PLAN - TYPICAL FLOORS**

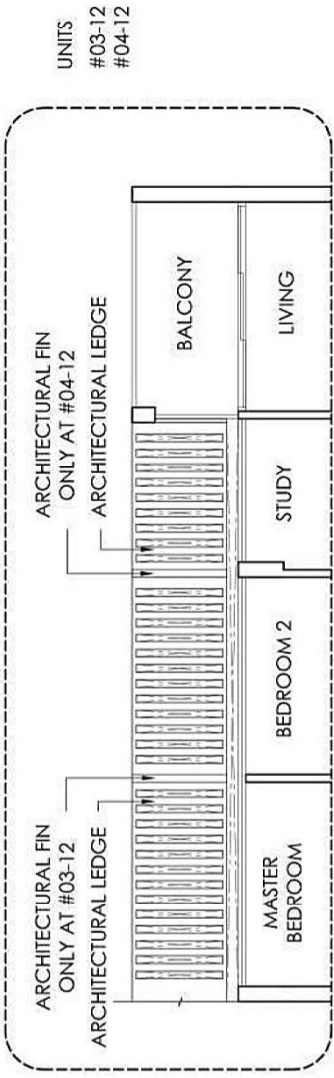


Area includes A/C ledge, balcony, PES and Void (where applicable). Orientation and facings will differ depending on the unit you are purchasing (please refer to key plan). All plans are not to scale and subject to changes as may be required by relevant authorities. All appliances and furniture shown in the plan are for illustration purpose only and not representation of fact. All floor areas are estimated and subjected to final survey.

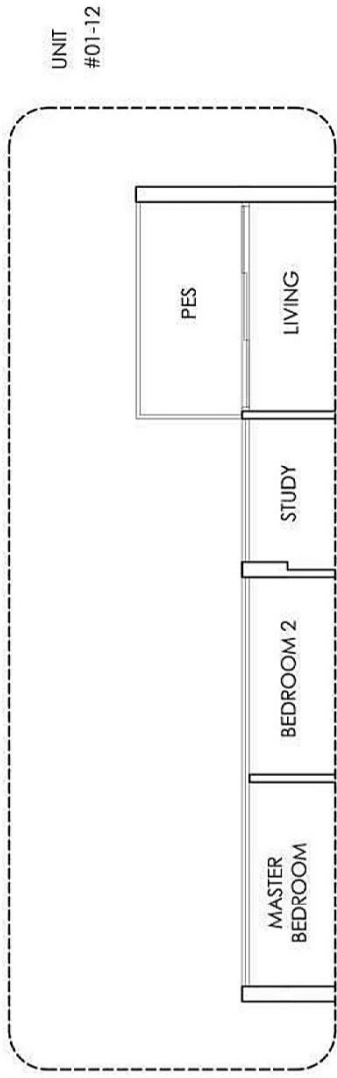


# TYPE B5, B5-P & B5-1

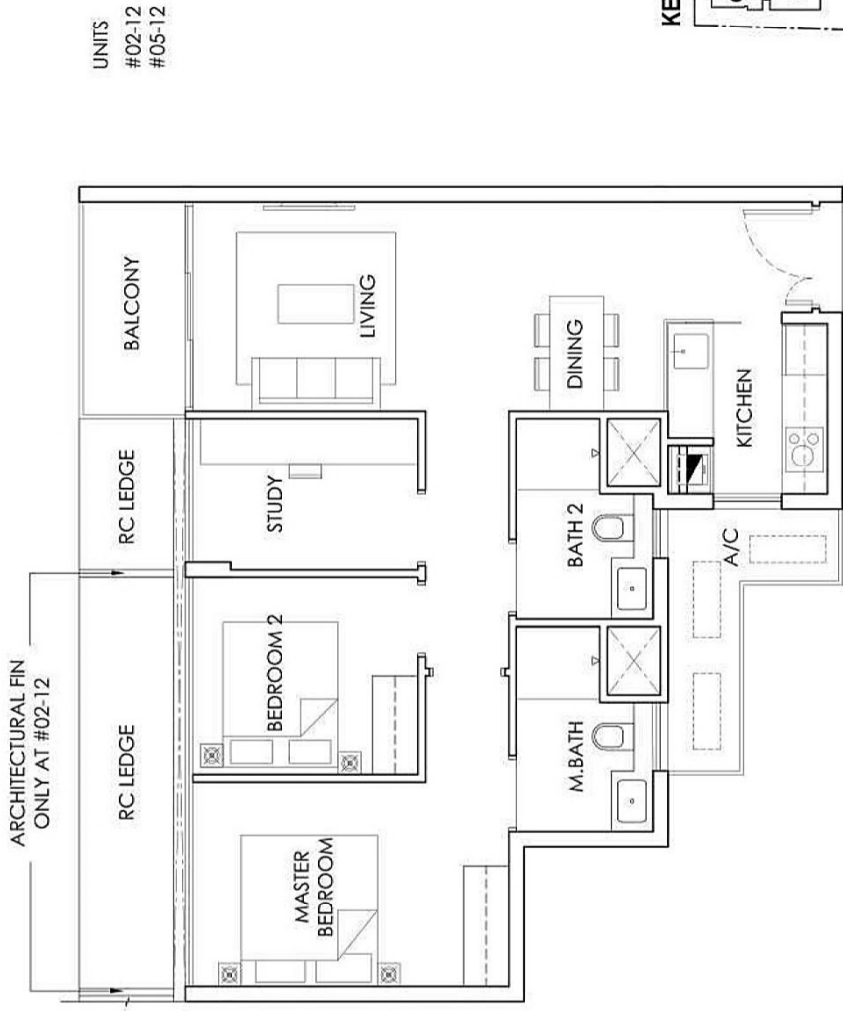
2+1 - BEDROOM  
80 sqm / 861 sqft



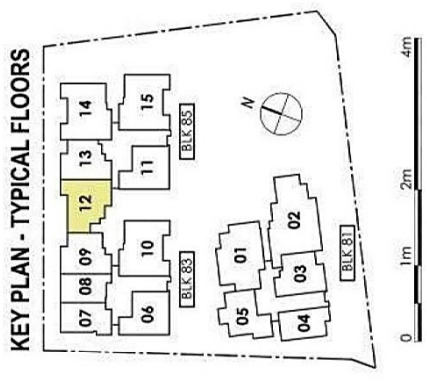
**B5-1**



**B5-P**

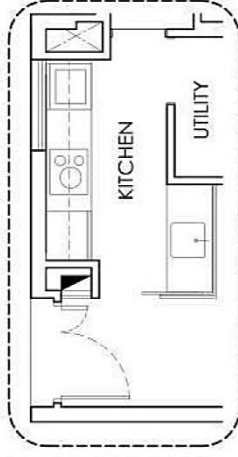
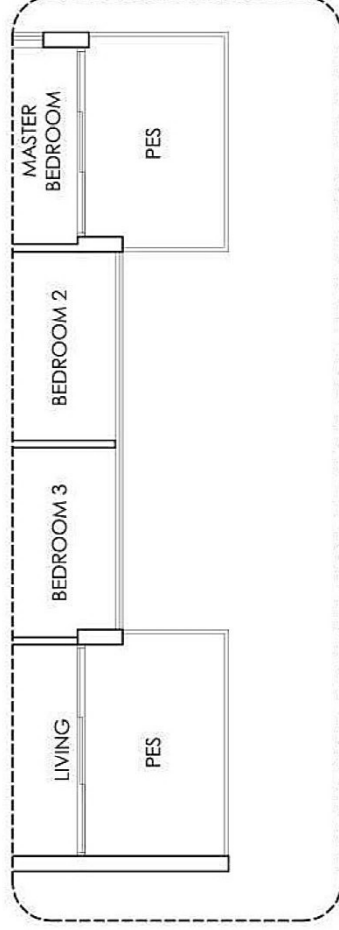


**B5**

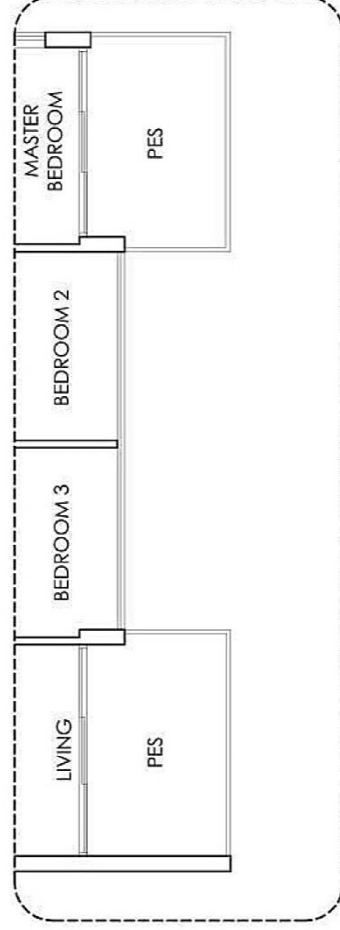


# TYPE C1, C1-P & C1-Pa

3 - BEDROOM  
96 sqm / 1033 sqft



**C1-Pa**



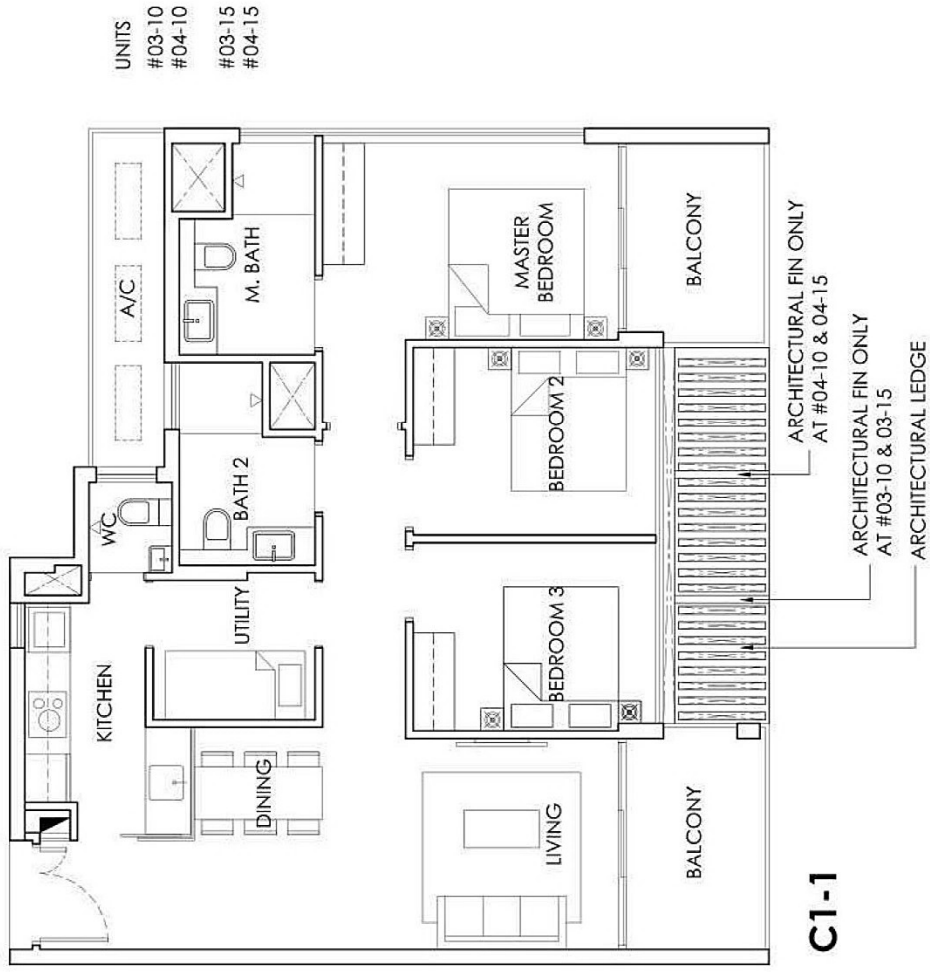
**C1-P**

**KEY PLAN - TYPICAL FLOORS**

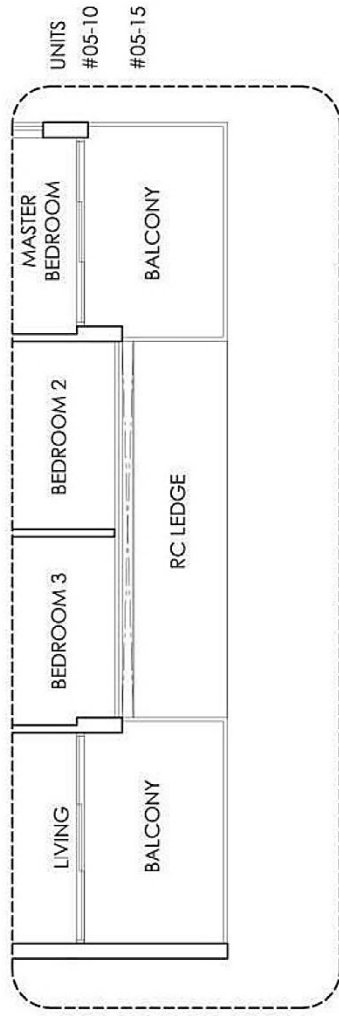


# TYPE C1-1 & C1-2

3 - BEDROOM  
96 sqm / 1033 sqft



**C1-1**

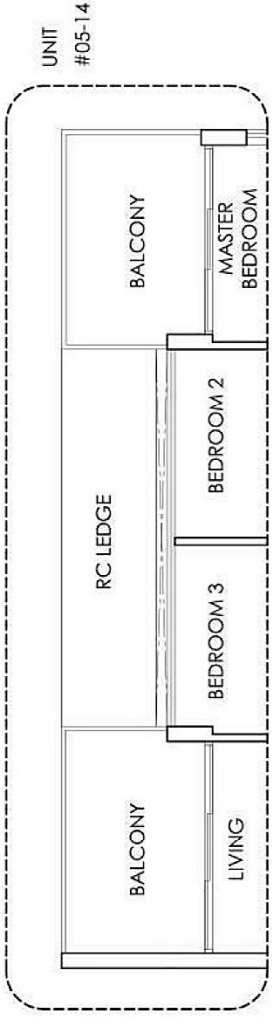


**C1-2**

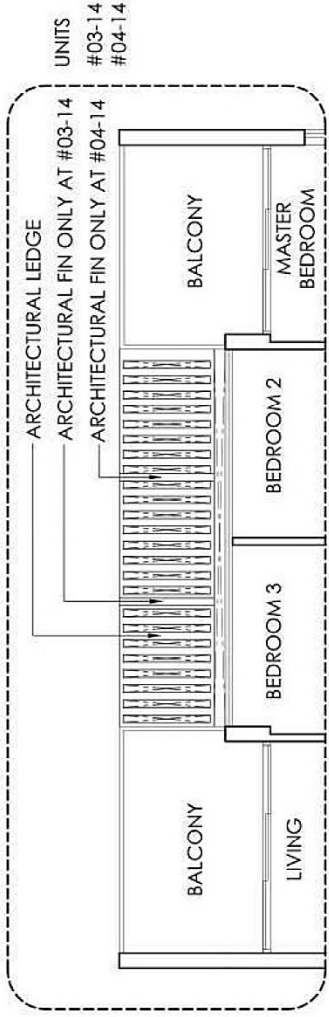


# TYPE C1a, C1a-P, C1a-1 & C1a-2

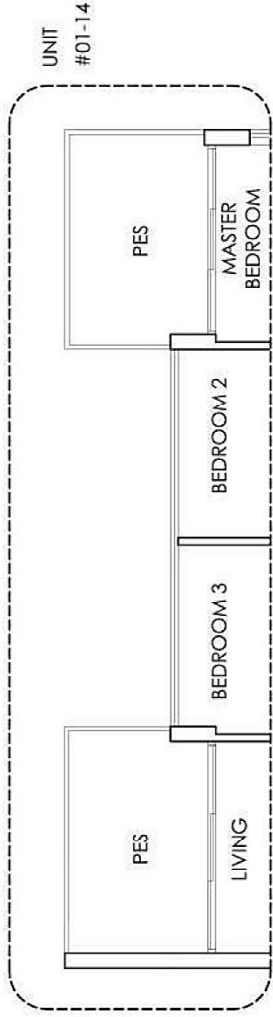
3 - BEDROOM  
95 sqm / 1023 sqft



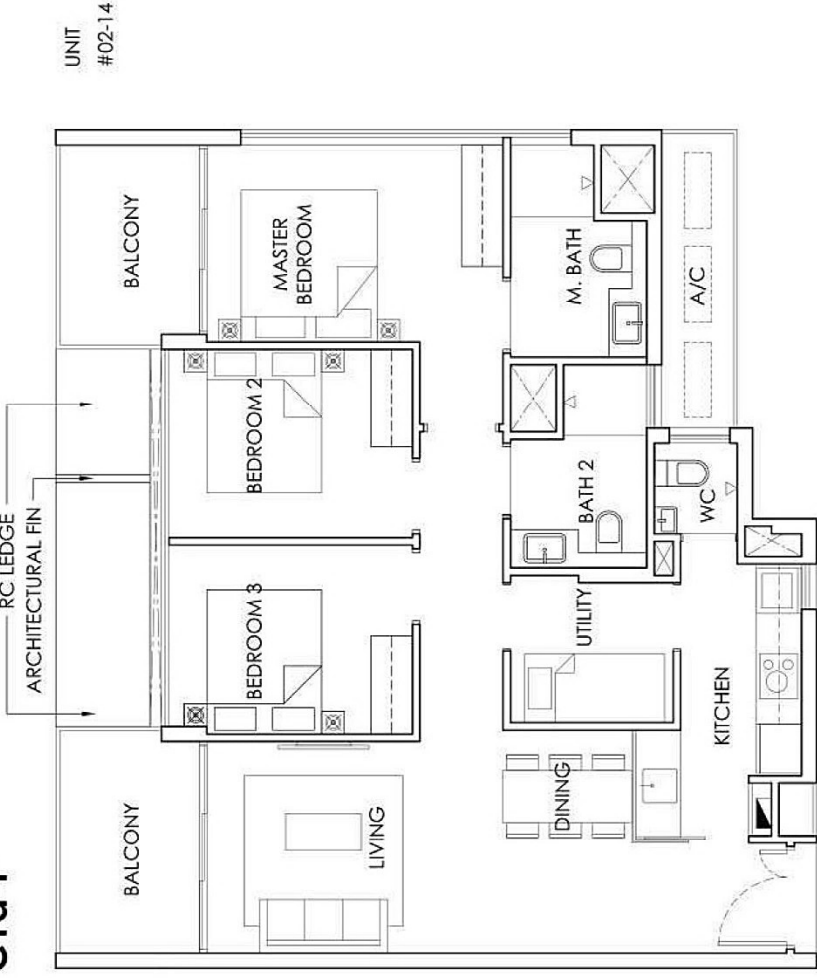
**C1a-2**



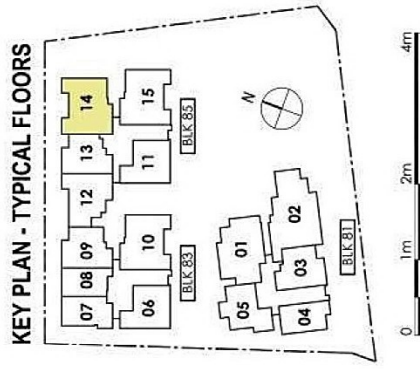
**C1a-1**



**C1a-1**



**C1a**

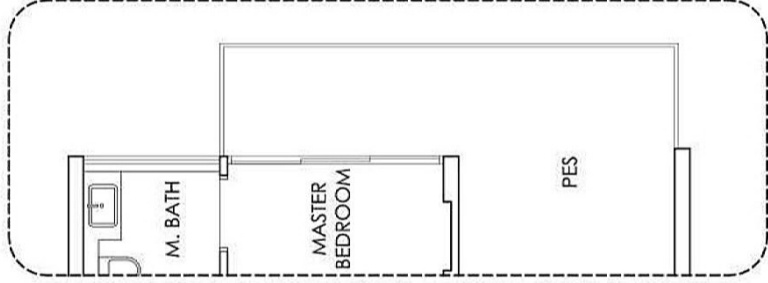


Area includes A/C ledge, balcony, PES and Void (where applicable). Orientation and facings will differ depending on the unit you are purchasing (please refer to key plan). All plans are not to scale and subject to changes as may be required by relevant authorities. All appliances and furniture shown in the plan are for illustration purpose only and not representation of fact. All floor areas are estimated and subjected to final survey.

# TYPE C2, C2-P, C2-1 & C2-2

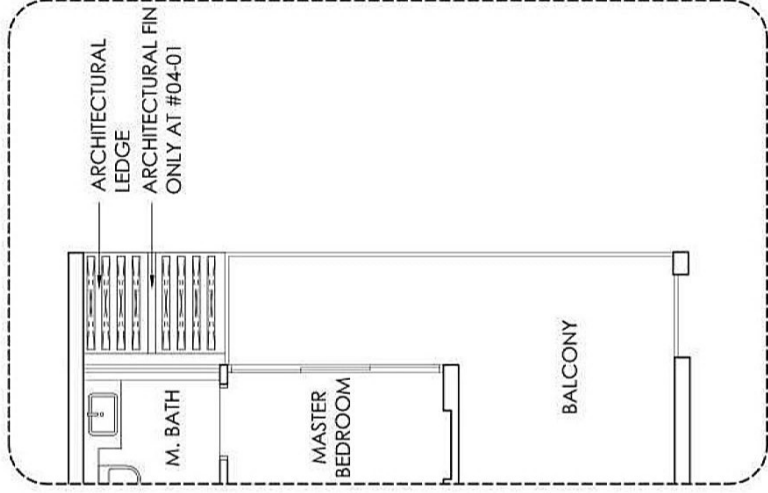
3 - BEDROOM

102 sqm / 1098 sqft



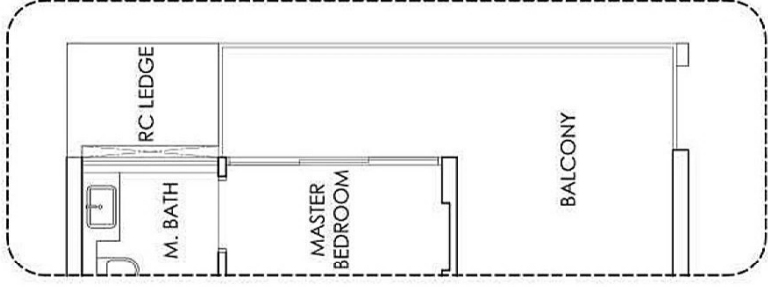
**C2-P**

UNIT  
#01-01



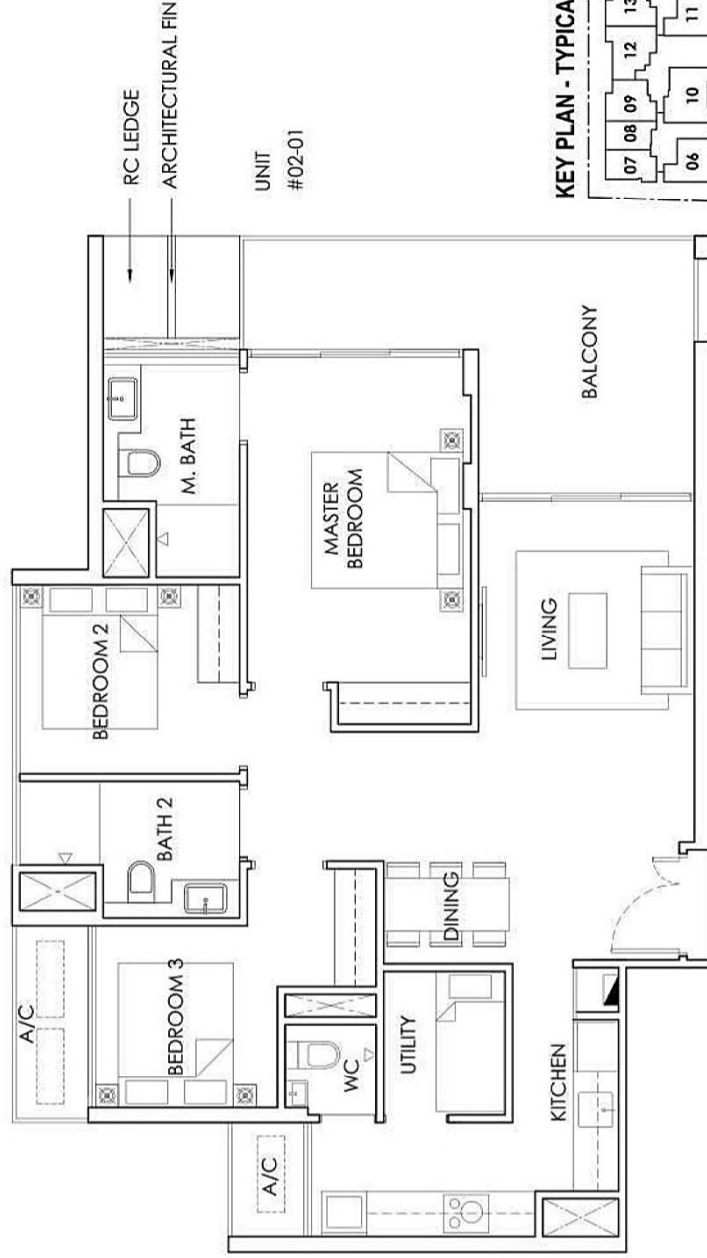
**C2-1**

UNIT  
#03-01  
#04-01



**C2-2**

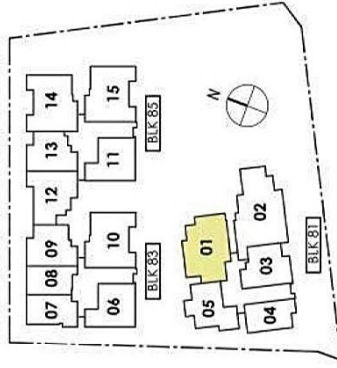
UNIT  
#05-01



**C2**

UNIT  
#02-01

KEY PLAN - TYPICAL FLOORS



0 1m 2m 4m