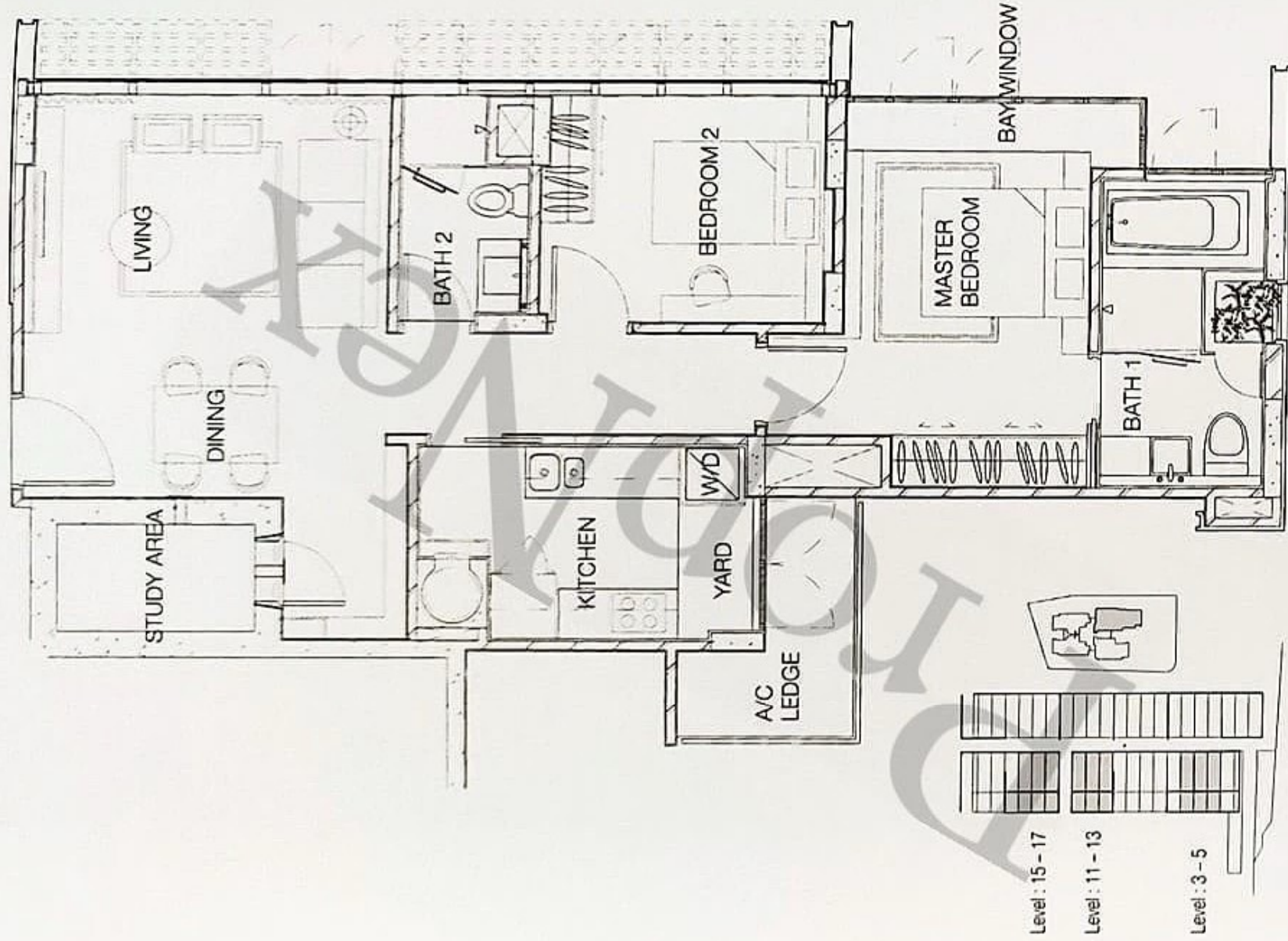


TYPE C

86 Sq.m / 926 Sq.ft

#03-03, #04-03, #05-03, #11-03, #12-03,
#13-03, #15-03, #16-03, #17-03

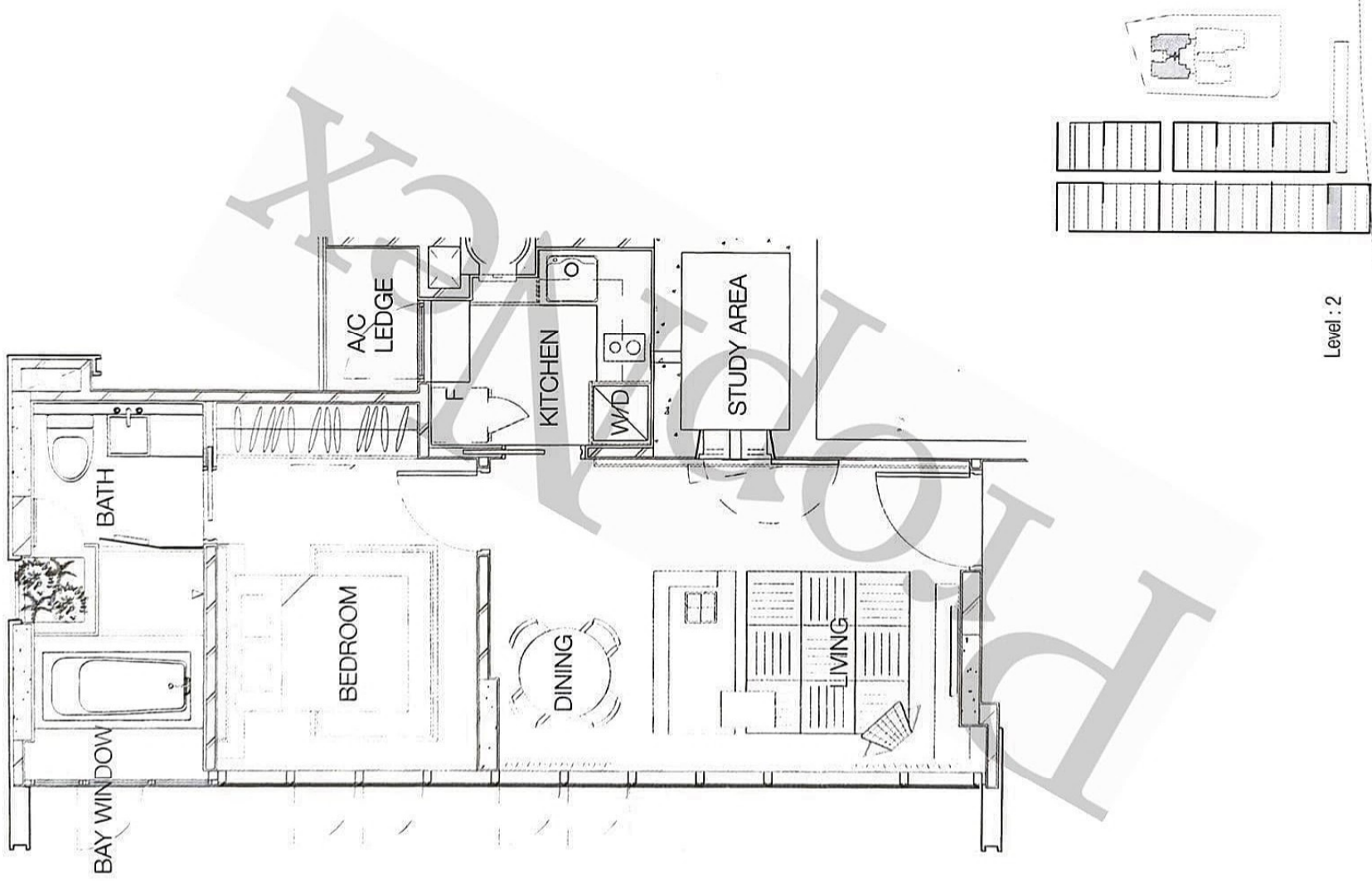


The above floor plans are subject to any amendments as may be approved by the relevant authorities.

TYPE A2

#02-01/02

54 Sq.m / 581 Sq.ft



Level : 2

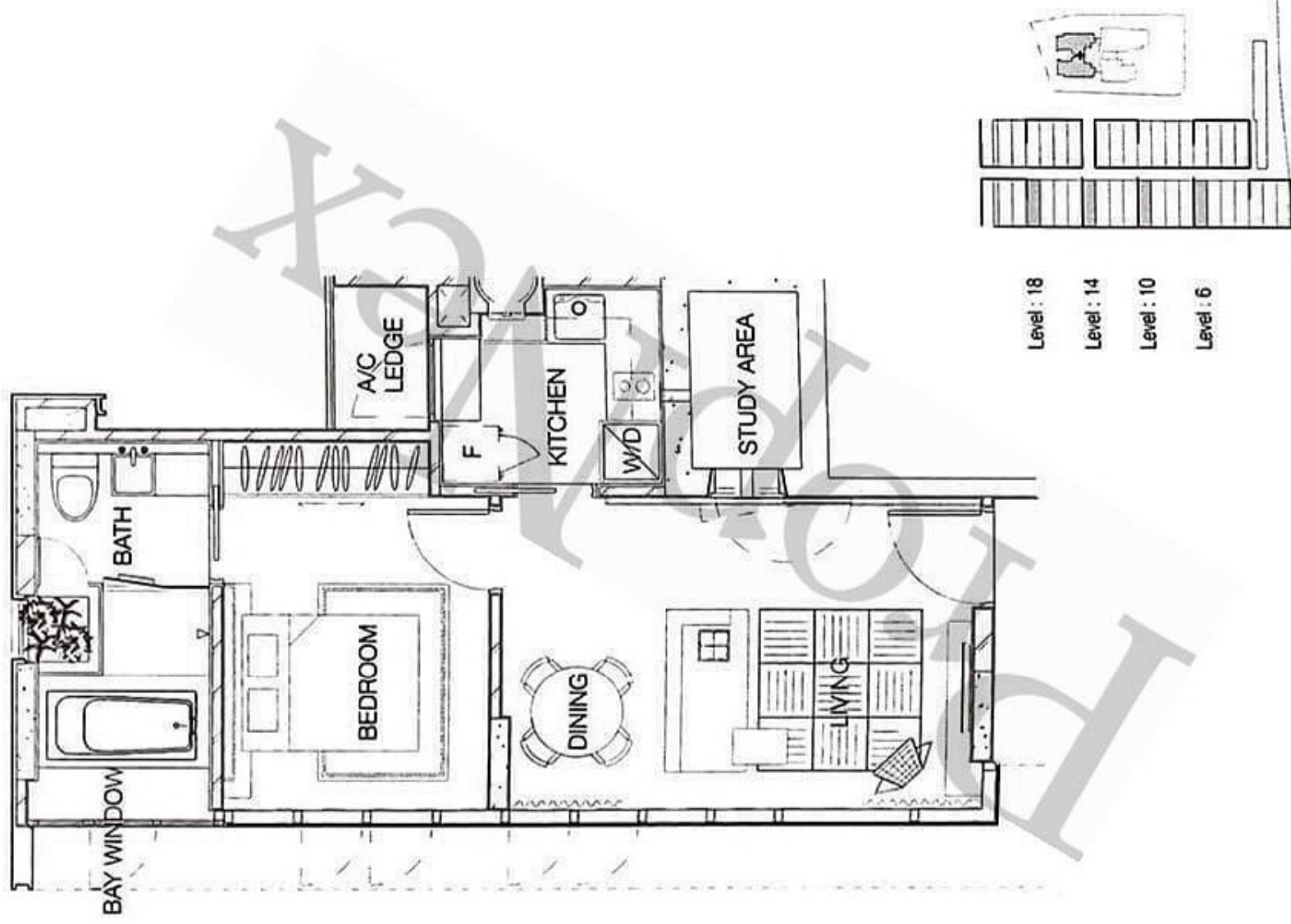


The above floor plans are subject to any amendments as may be approved by the relevant authorities.

TYPE A1

54 Sq.m / 581 Sq.ft

#06-01/02, #10-01/02, #14-01/02,
#18-01/02

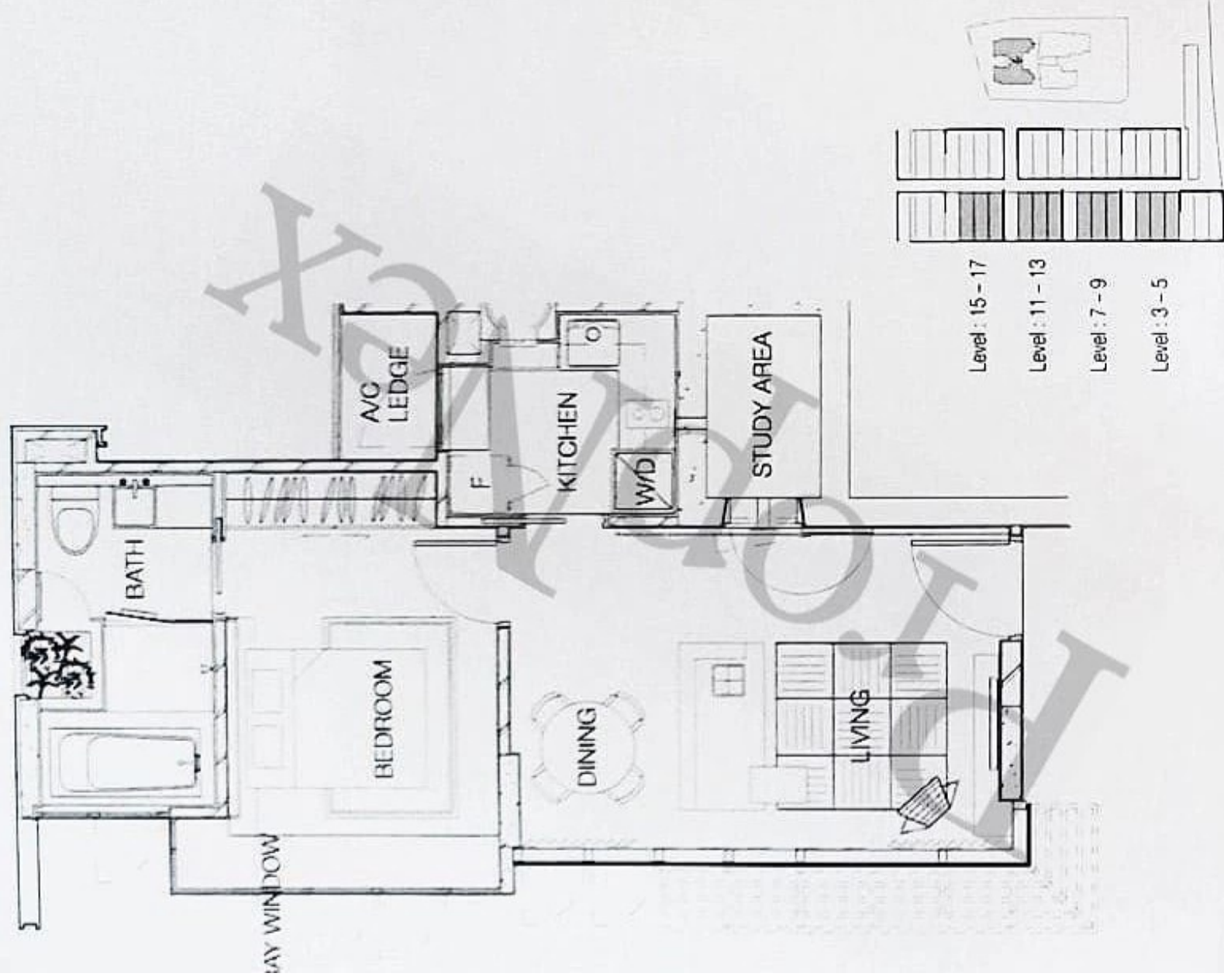


The above floor plans are subject to any amendments as may be approved by the relevant authorities.

TYPE A

54 Sq.m / 581 Sq.ft

#03-01/02, #04-01/02, #05-01/02, #07-01/02,
#08-01/02, #09-01/02, #11-01/02, #12-01/02,
#13-01/02, #15-01/02, #16-01/02, #17-01/02

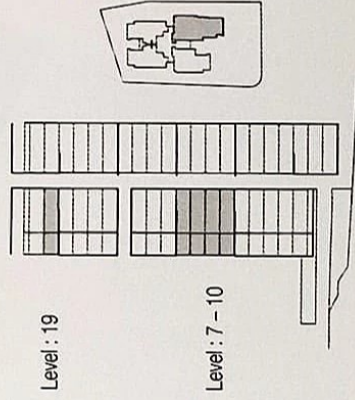
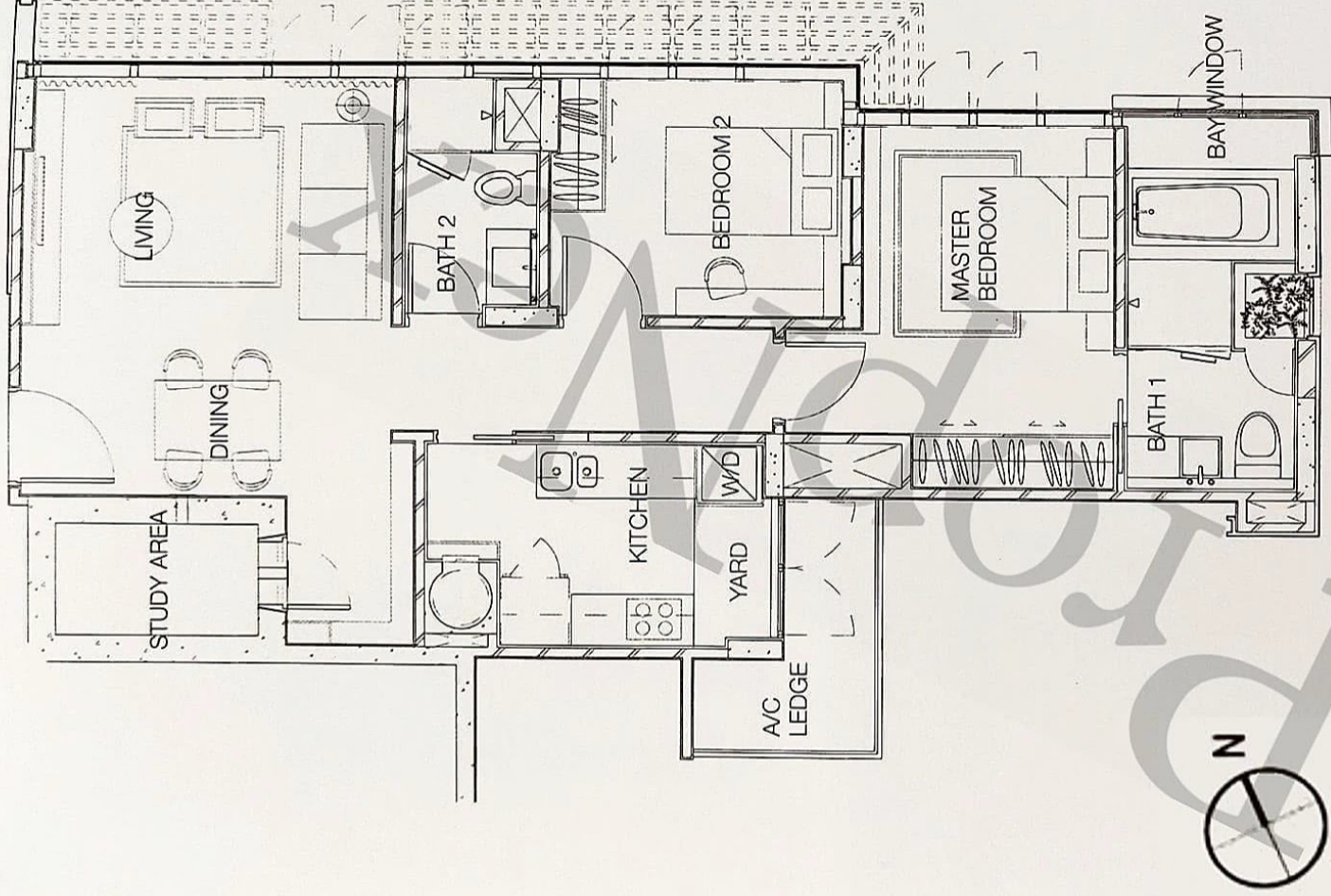


The above floor plans are subject to any amendments as may be approved by the relevant authorities.

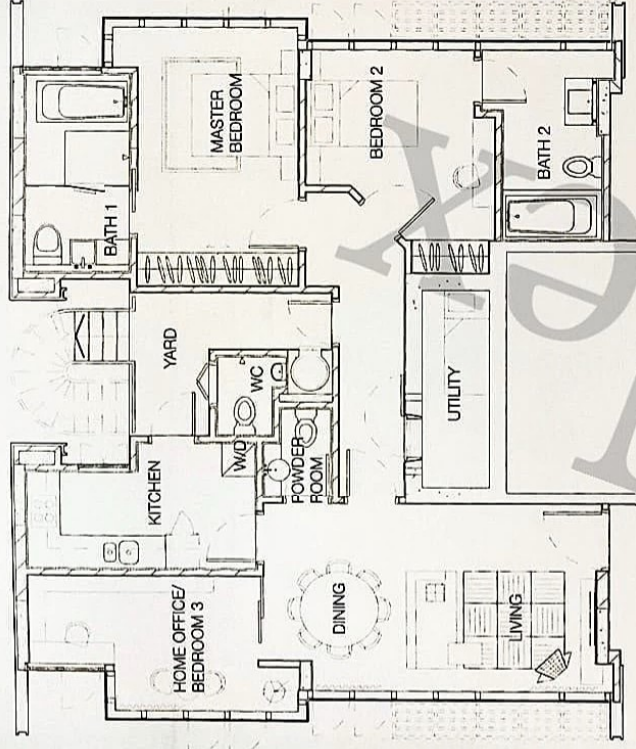
TYPE C3

86 Sq.m / 926 Sq.ft

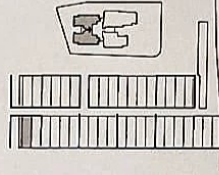
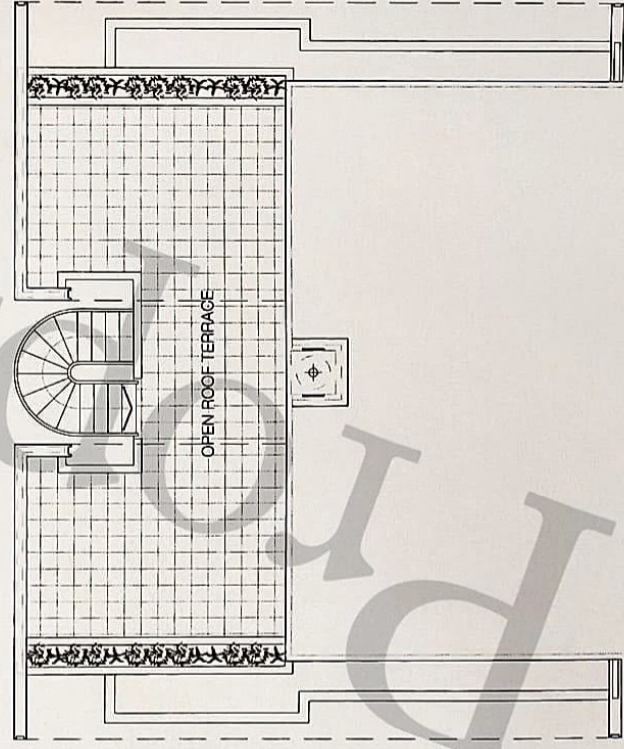
#07-03, #08-03, #09-03, #10-03, #19-02



The above floor plans are subject to any amendments as may be approved by the relevant authorities.



Roof Level



Level : 20

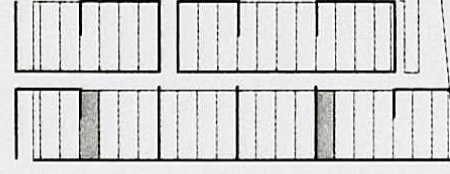
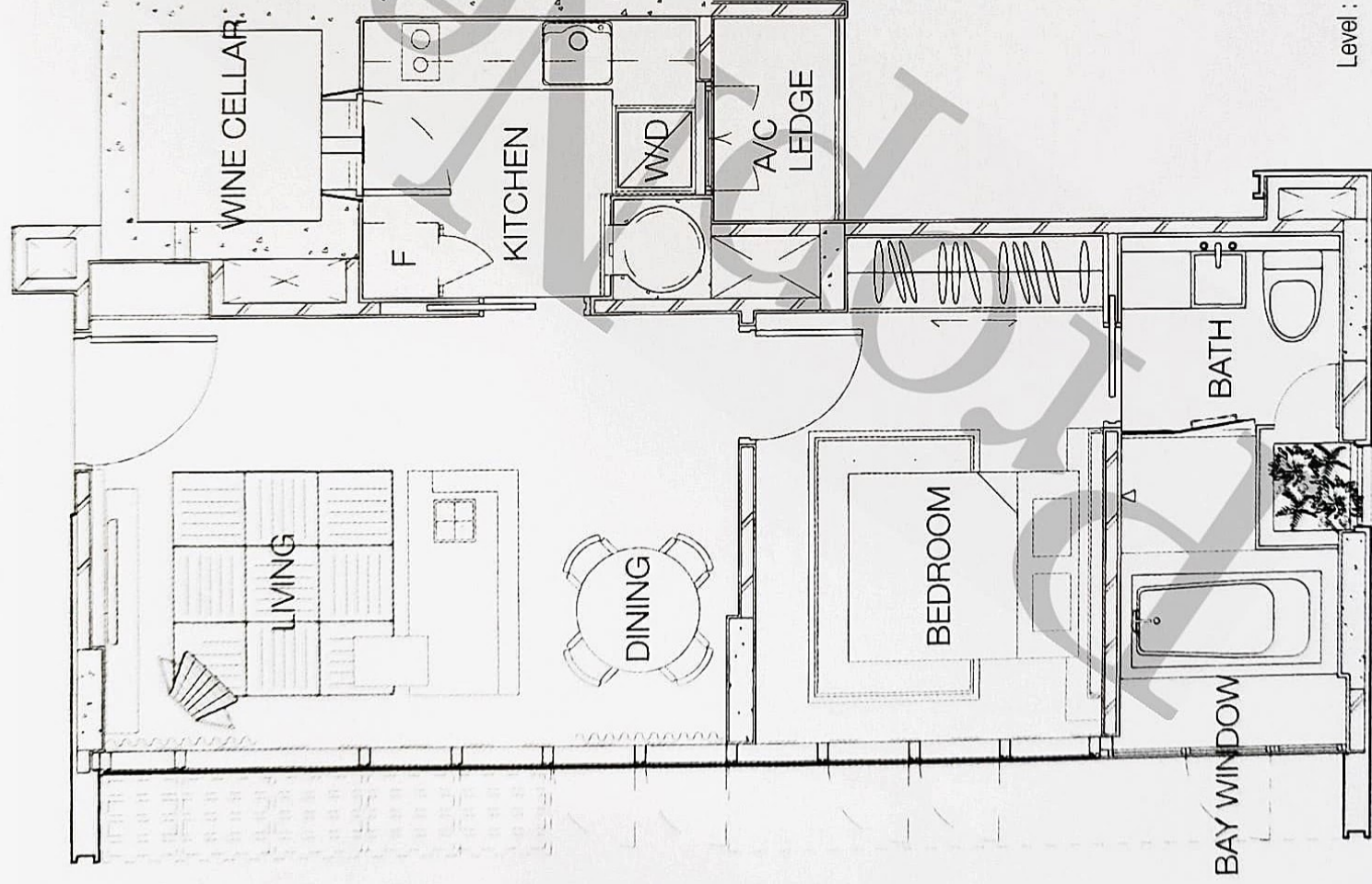


The above floor plans are subject to any amendments as may be approved by the relevant authorities.

TYPE B1

#06-04, #18-04

55 Sq.m / 592 Sq.ft



Level : 18

Level : 6

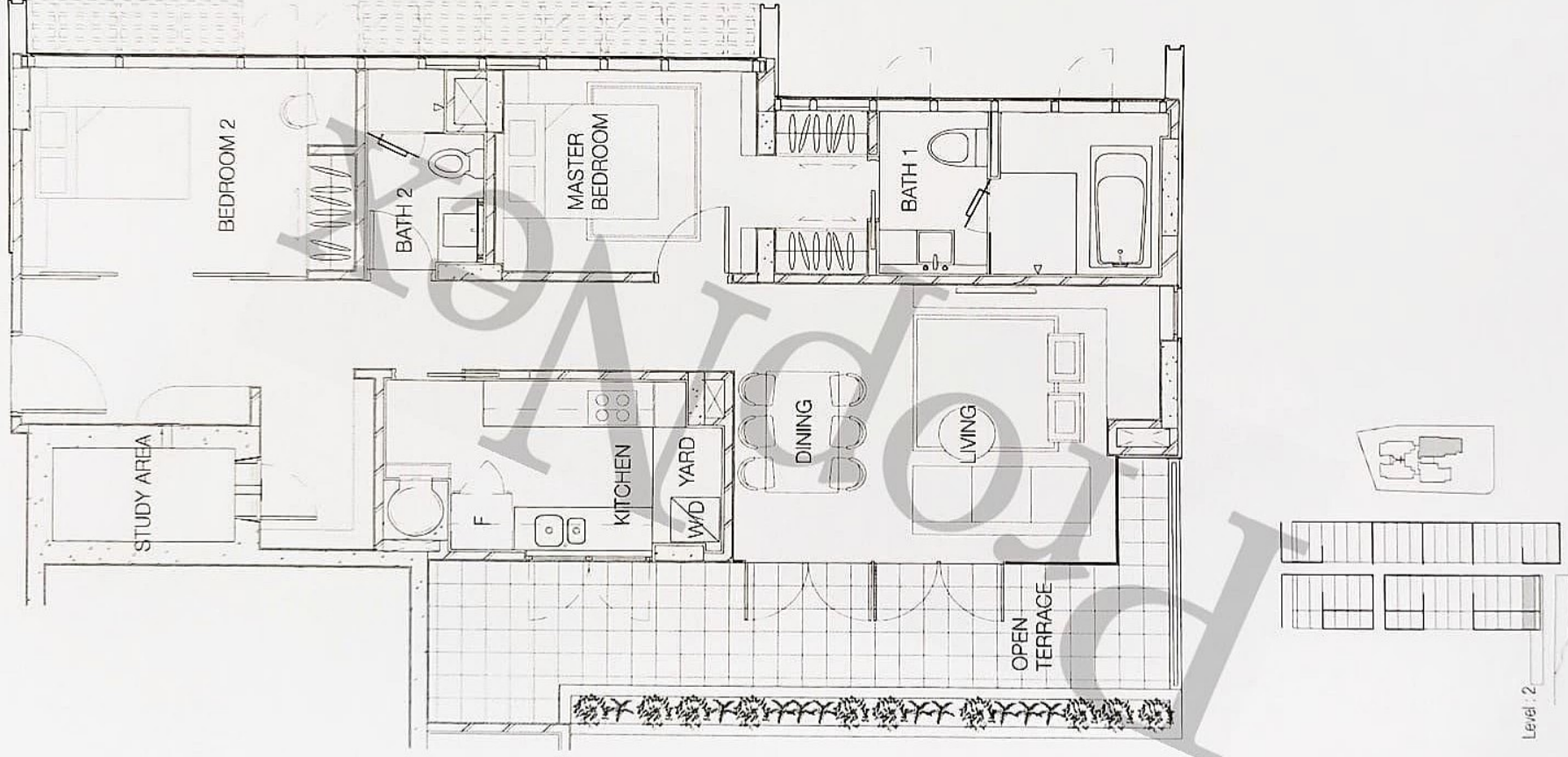


The above floor plans are subject to any amendments as may be approved by the relevant authorities.

TYPED

#02-03

109 Sq.m / 1,173 Sq.ft

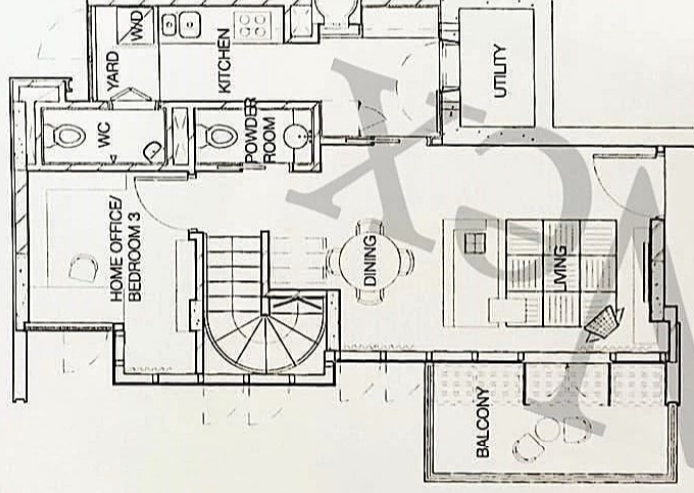


Level : 2

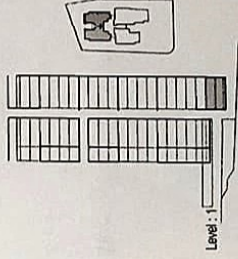
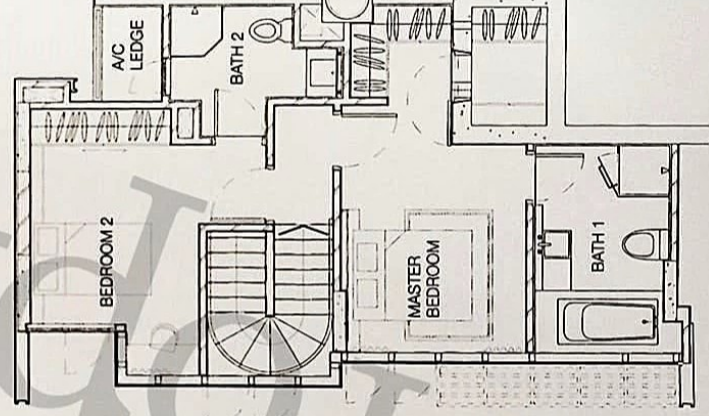


The above floor plans are subject to any amendments as may be approved by the relevant authorities.

Lower



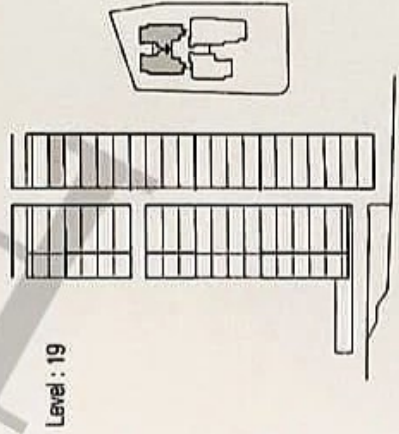
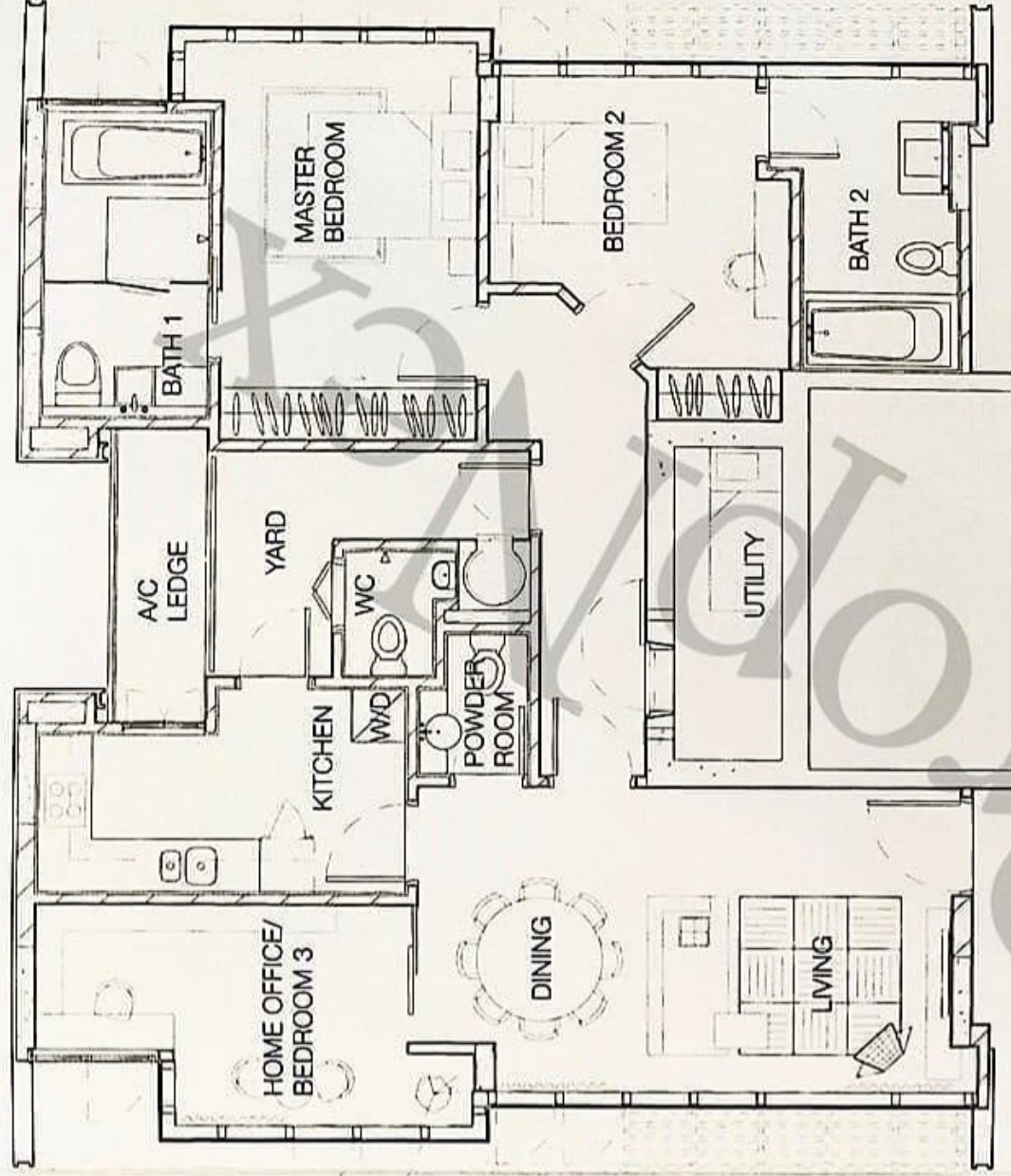
Upper



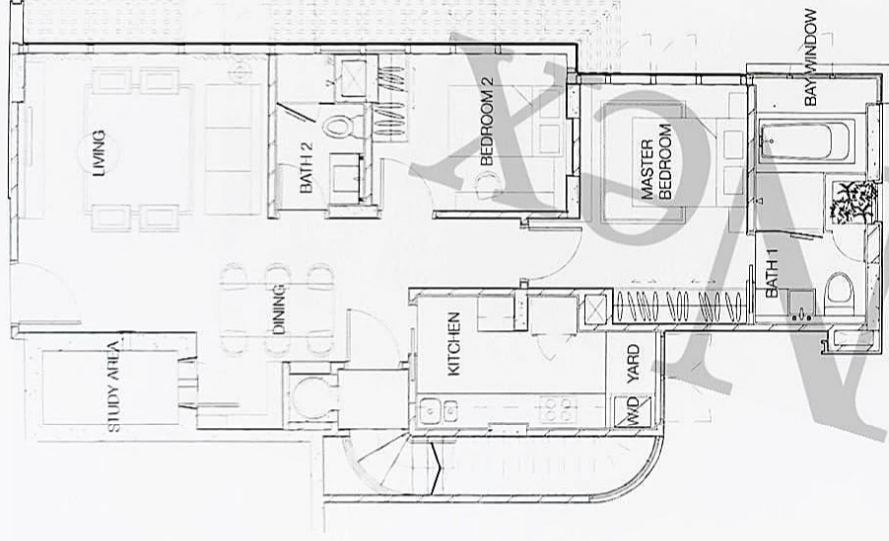
TYPE F1

#19-01

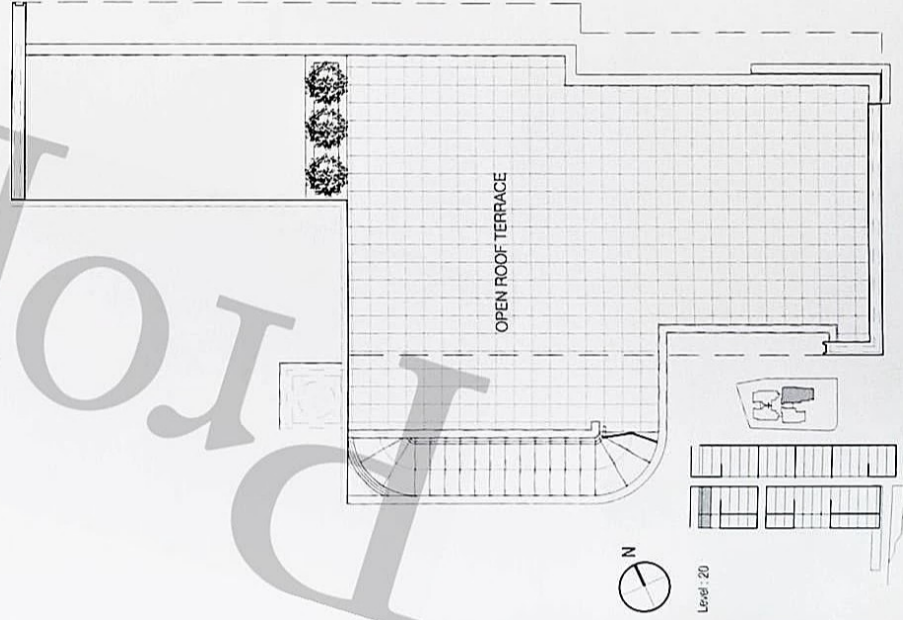
117 Sq.m / 1,259 Sq.ft

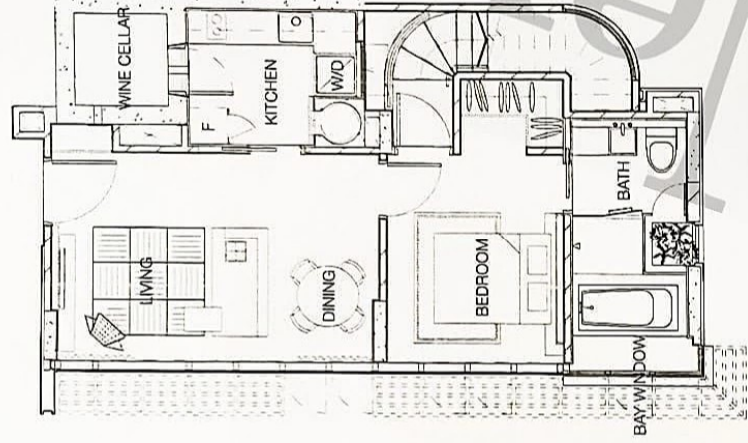


The above floor plans are subject to any amendments as may be approved by the relevant authorities.

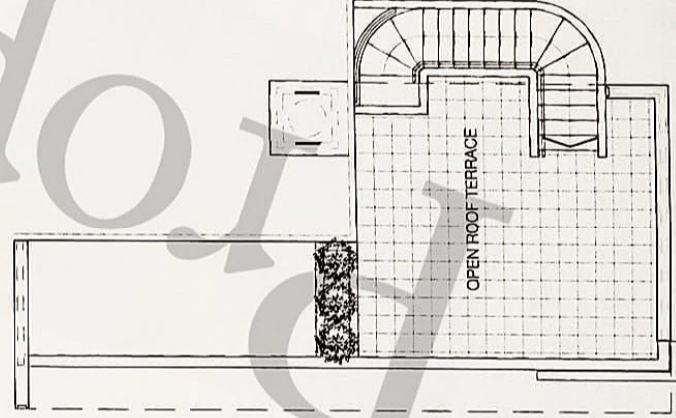


Roof Level

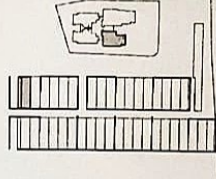




Roof Level



Level: 20

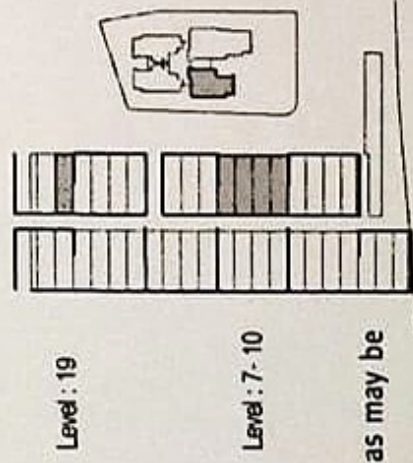
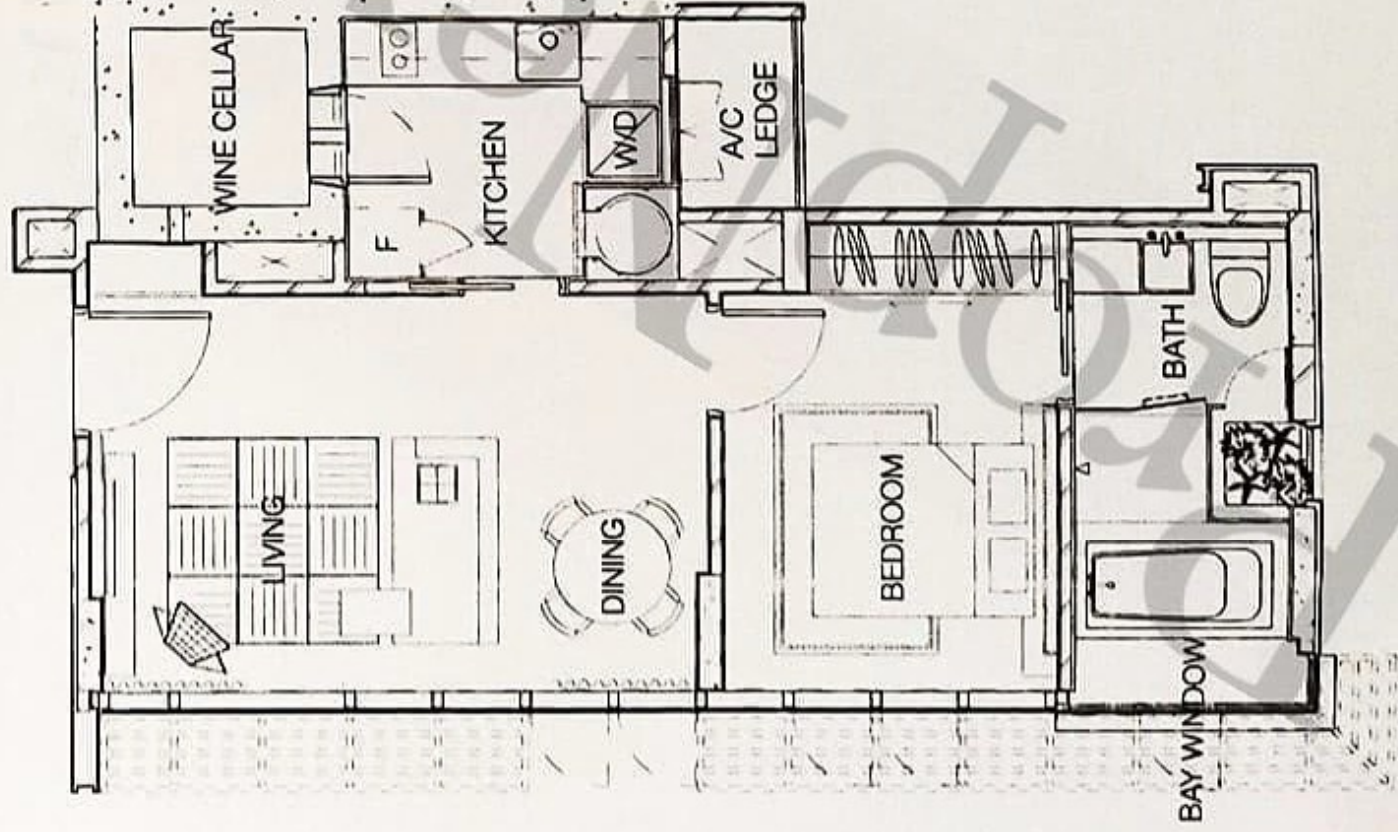


The above floor plans are subject to any amendments as may be approved by the relevant authorities.

TYPE B3

55 Sq.m / 592 Sq.ft

#07-04, #08-04, #09-04, #10-04, #19-03

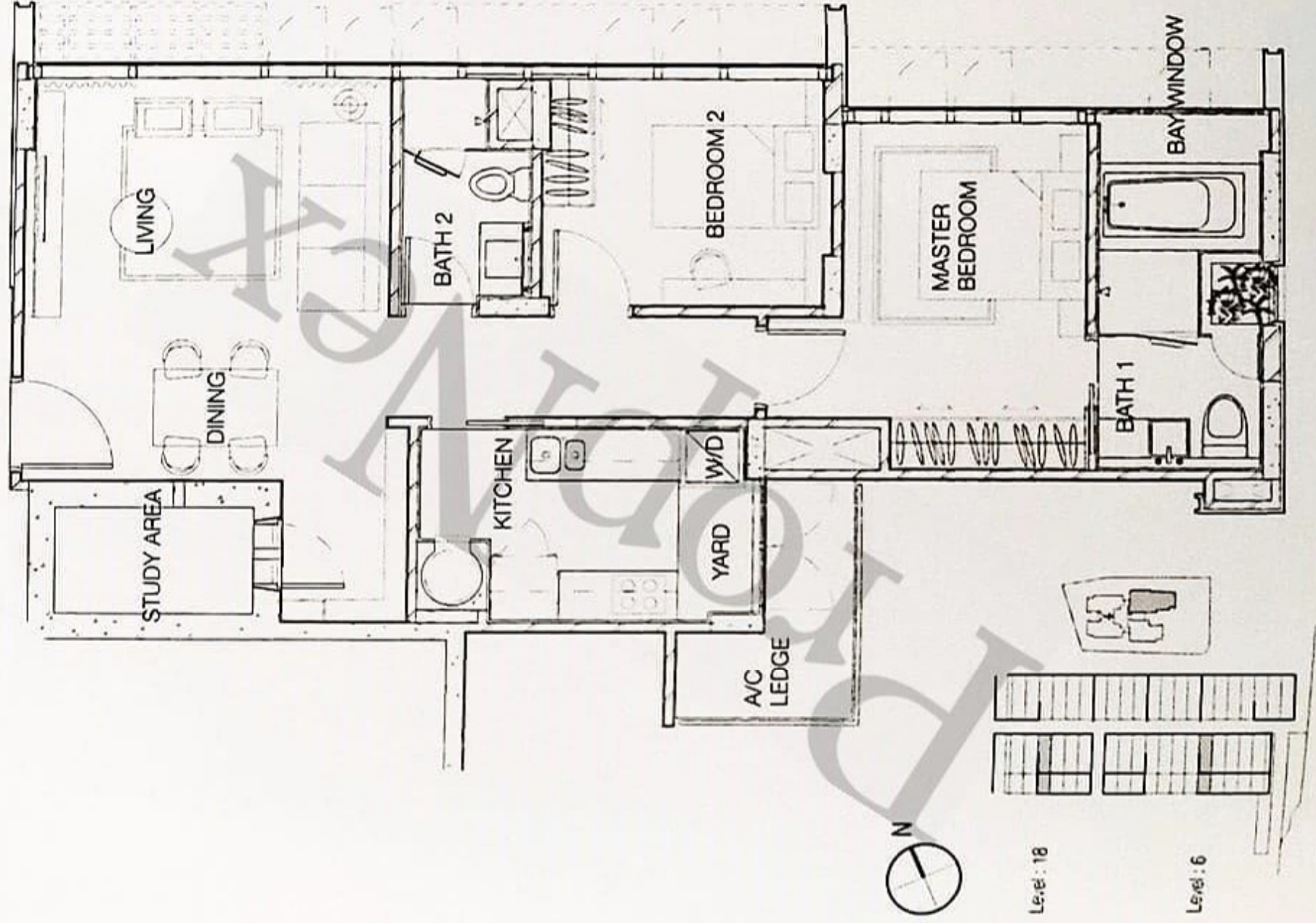


The above floor plans are subject to any amendments as may be approved by the relevant authorities.

TYPE C1

#06-03, #18-03

85 Sq.m / 915 Sq.ft



The above floor plans are subject to any amendments as may be approved by the relevant authorities.