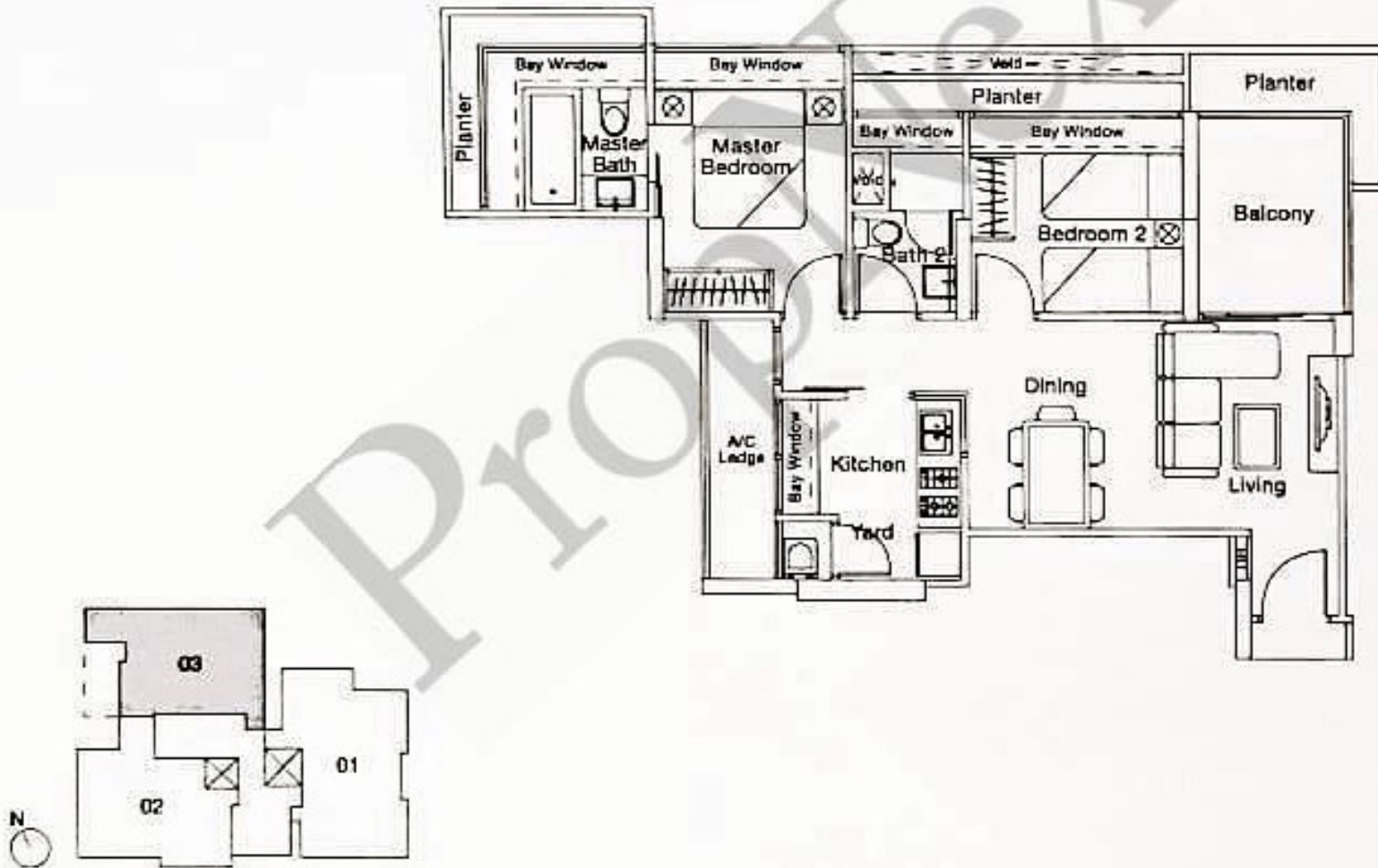


## Type A1 (2-bedroom)

Unit #02-03 to #13-03

Area 797 sq ft / 74 sq m (inclusive of a/c ledge, planter & balcony)

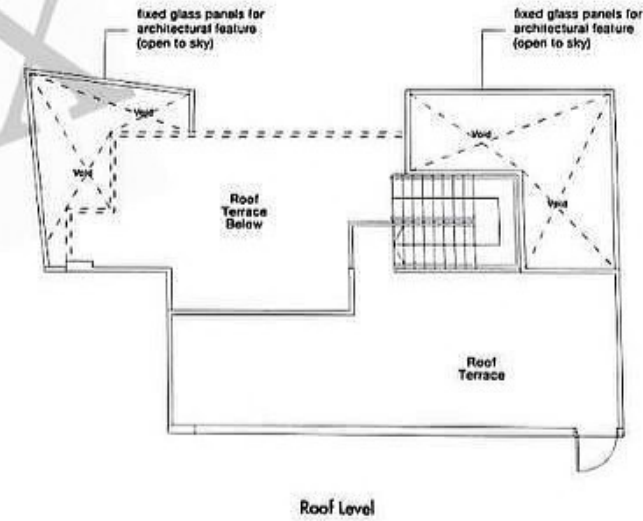
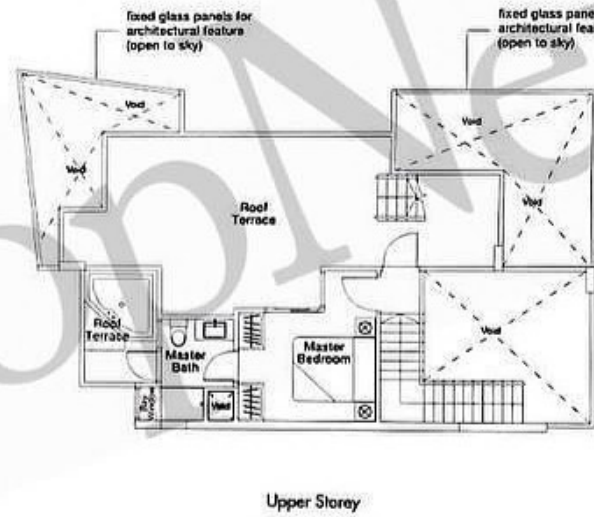
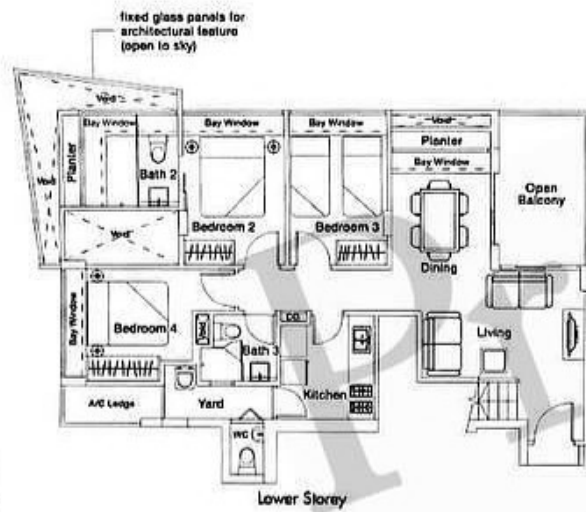


All plans are subject to amendments as approved by the relevant authorities. Floor areas are approximate measurements and subject to final survey.

### Type B2-P (4-bedroom)

Unit #18-03

Area 2153 sq ft / 200 sq m (inclusive of a/c ledge, planter, balcony & roof terrace)

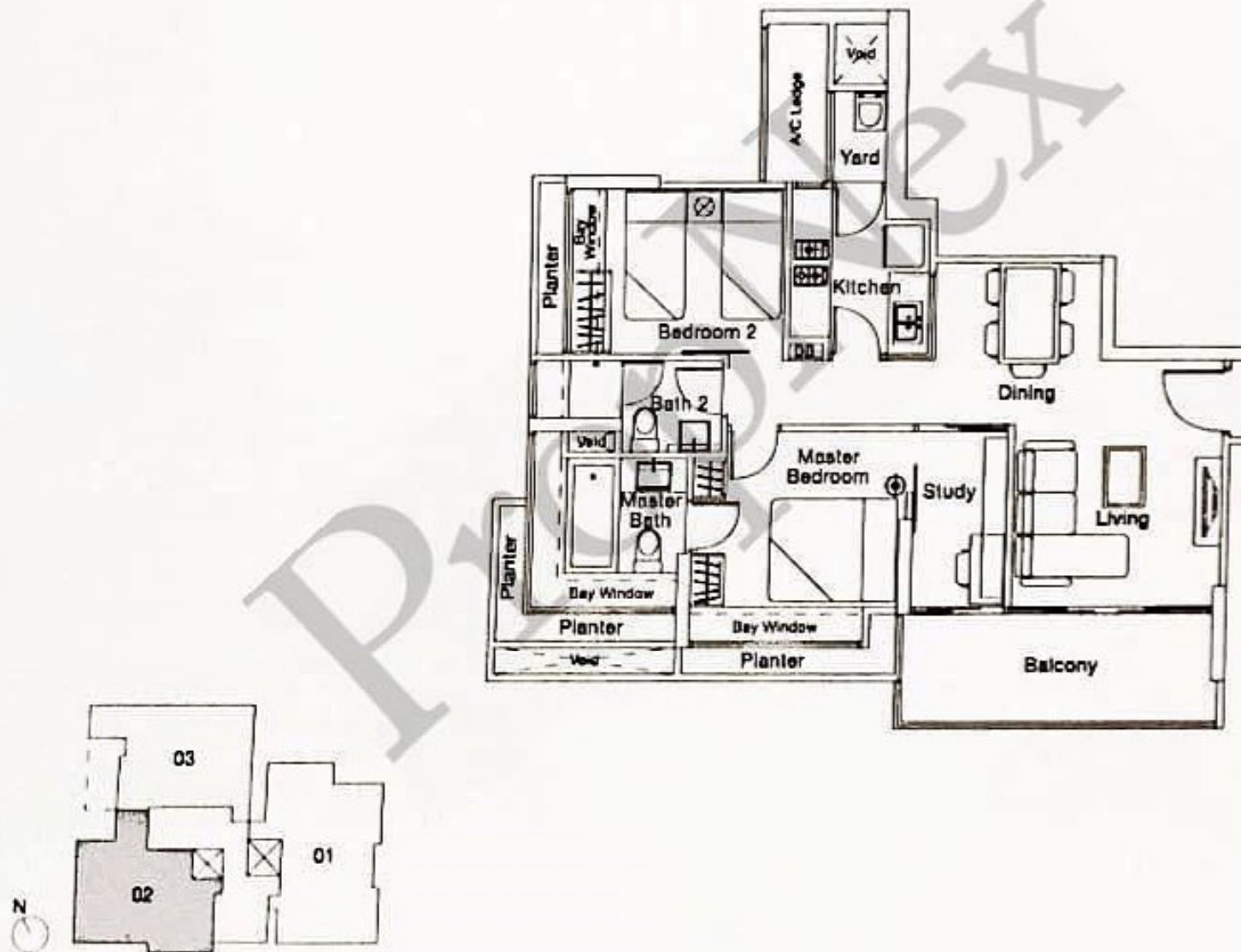


All plans are subject to amendments as approved by the relevant authorities. Floor areas are approximate measurements and subject to final survey.

## Type A2a (2-bedroom + study)

Unit #17-02

Area 872 sq ft / 81 sq m (inclusive of a/c ledge, planter & balcony)

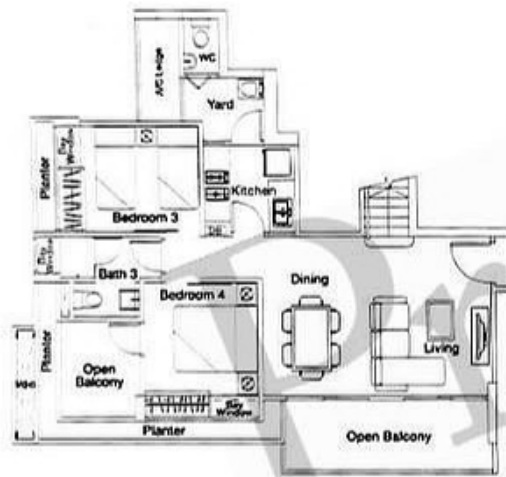


All plans are subject to amendments as approved by the relevant authorities. Floor areas are approximate measurements and subject to final survey.

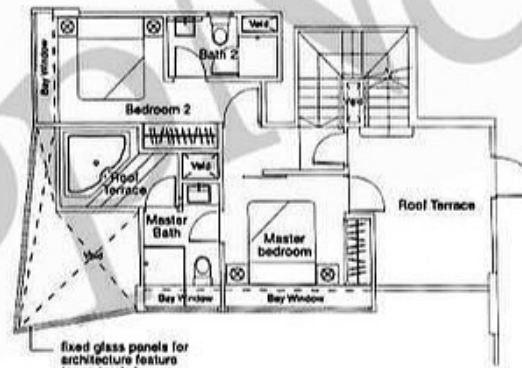
### Type A2-P (4-bedroom)

Unit #18-02

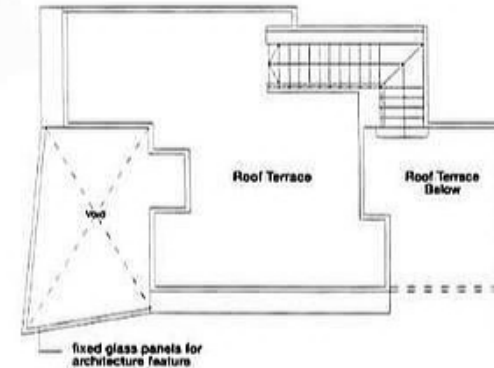
Area 1830 sq ft / 170 sq m (inclusive of a/c ledge, planter, balcony & roof terrace)



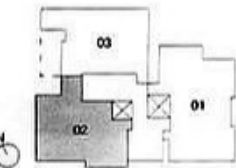
Lower Storey



Upper Storey



Roof Level

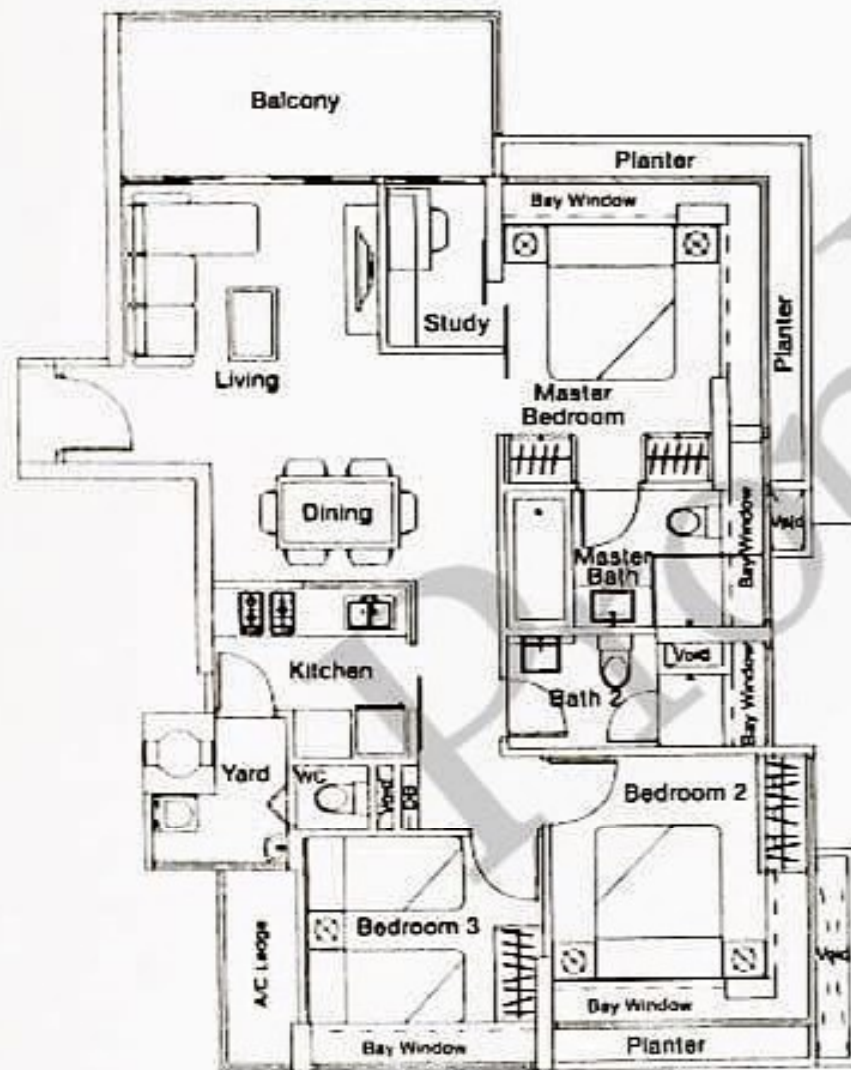


All plans are subject to amendments as approved by the relevant authorities. Floor areas are approximate measurements and subject to final survey.

# Type B1 (3-bedroom + study)

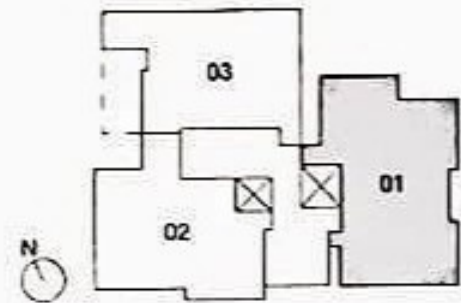
Unit #02-01 to #16-01

Area 1055 sq ft / 98 sq m (inclusive of a/c ledge, planter & balcony)



r.c. beam for decorative feature  
(at 2nd, 5th, 8th 11th and 14th only)

r.c. beam for decorative feature  
(at 2nd, 5th, 8th 11th and 14th only)

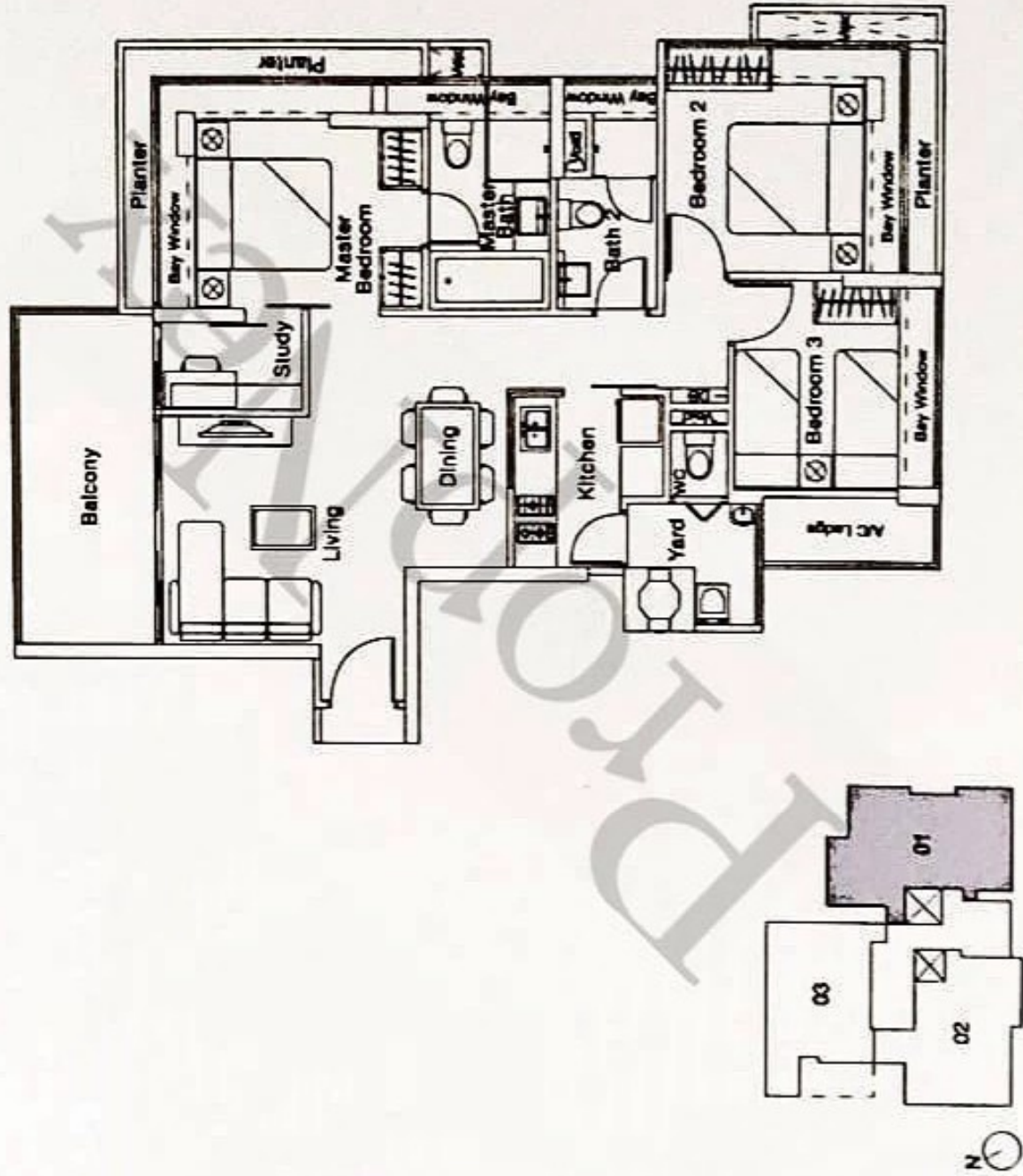


All plans are subject to amendments as approved by the relevant authorities. Floor areas are approximate measurements and subject to final survey.

**Type B1a (3-bedroom + study)**

Unit #17-01

Area 1130 sq ft / 105 sq m (inclusive of a/c ledge, planter & balcony)

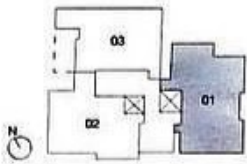
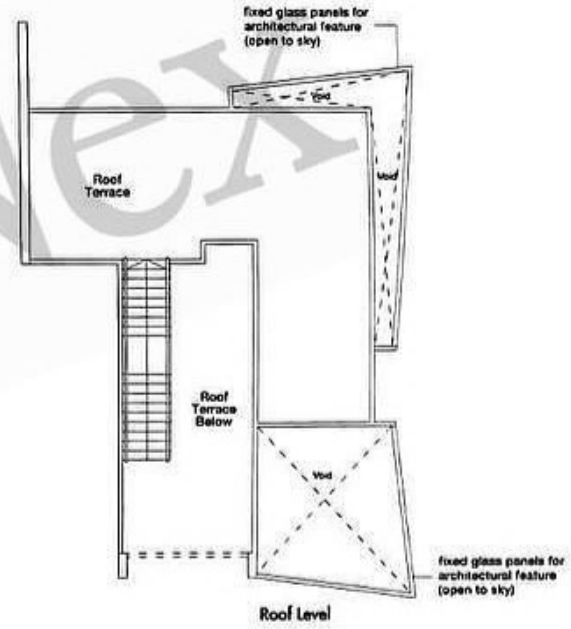
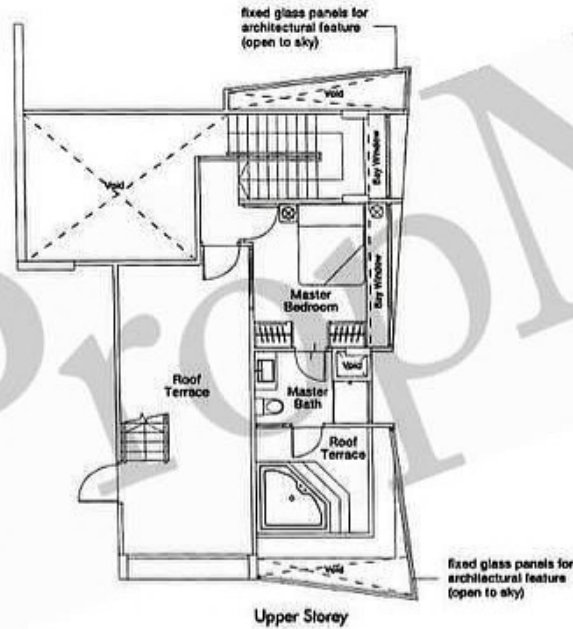


All plans are subject to amendments as approved by the relevant authorities. Floor areas are approximate measurements and subject to final survey.

Type B1-P (4-bedroom)

Unit #18-01

Area 2196 sq ft / 204 sq m (inclusive of a/c ledge, planter, balcony & roof terrace)

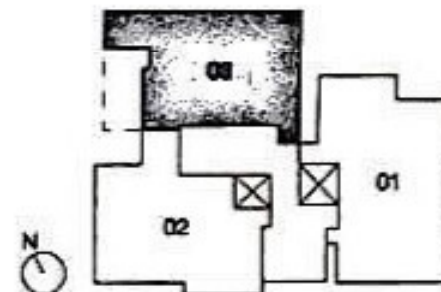


All plans are subject to amendments as approved by the relevant authorities. Floor areas are approximate measurements and subject to final survey.

## Type B2 (3-bedroom + study)

Unit #14-03 to #16-03

Area 1033 sq ft / 96 sq m (inclusive of a/c ledge, planter & balcony)



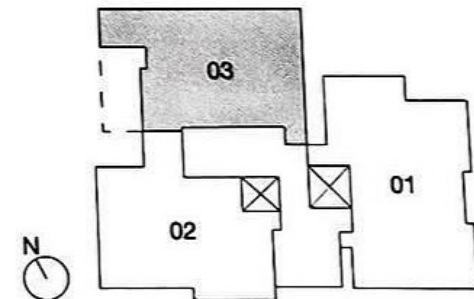
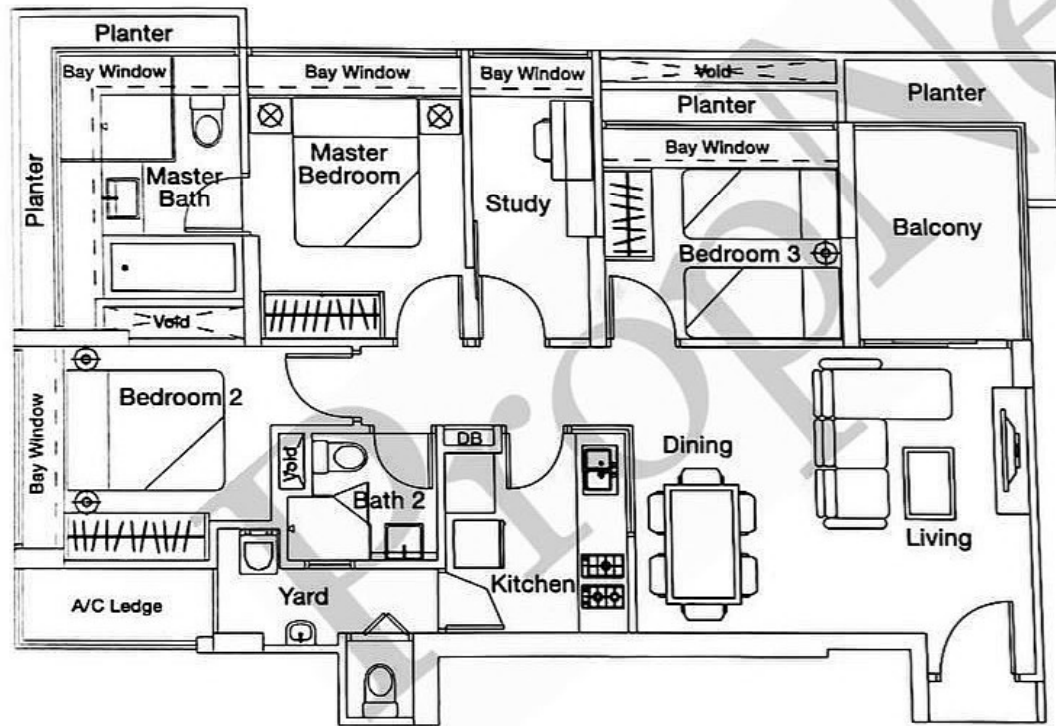
All plans are subject to amendments as approved by the relevant authorities. Floor areas are approximate measurements and subject to final survey.



# Type B2a (3-bedroom + study)

Unit #17-03

Area 1087 sq ft / 101 sq m (inclusive of a/c ledge, planter & balcony)

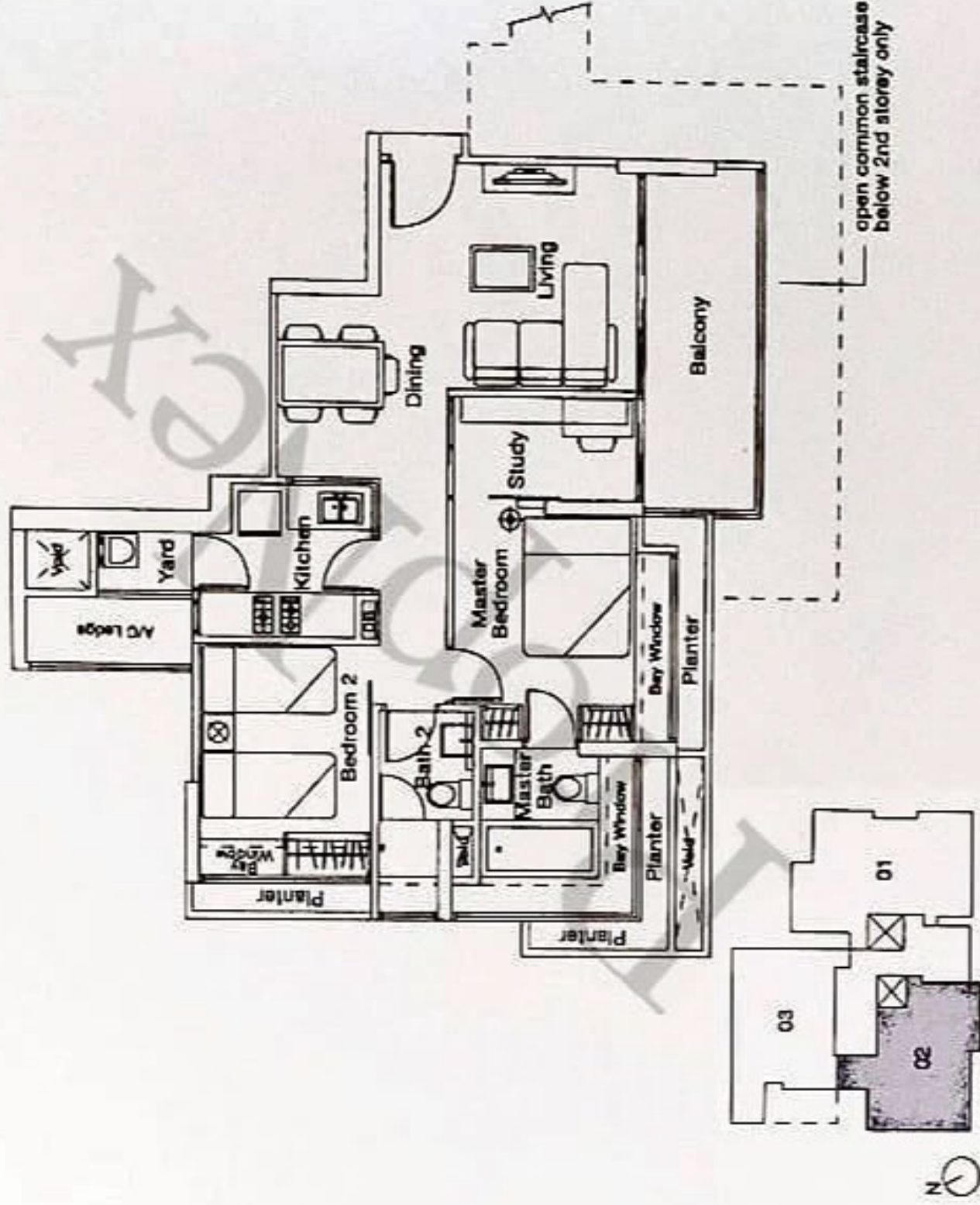


All plans are subject to amendments as approved by the relevant authorities. Floor areas are approximate measurements and subject to final survey.

## Type A2 (2-bedroom + study)

Unit #02-02 to #16-02

Area 829 sq ft / 77 sq m (inclusive of a/c ledge, planter & balcony)



All plans are subject to amendments as approved by the relevant authorities. Floor areas are approximate measurements and subject to final survey.