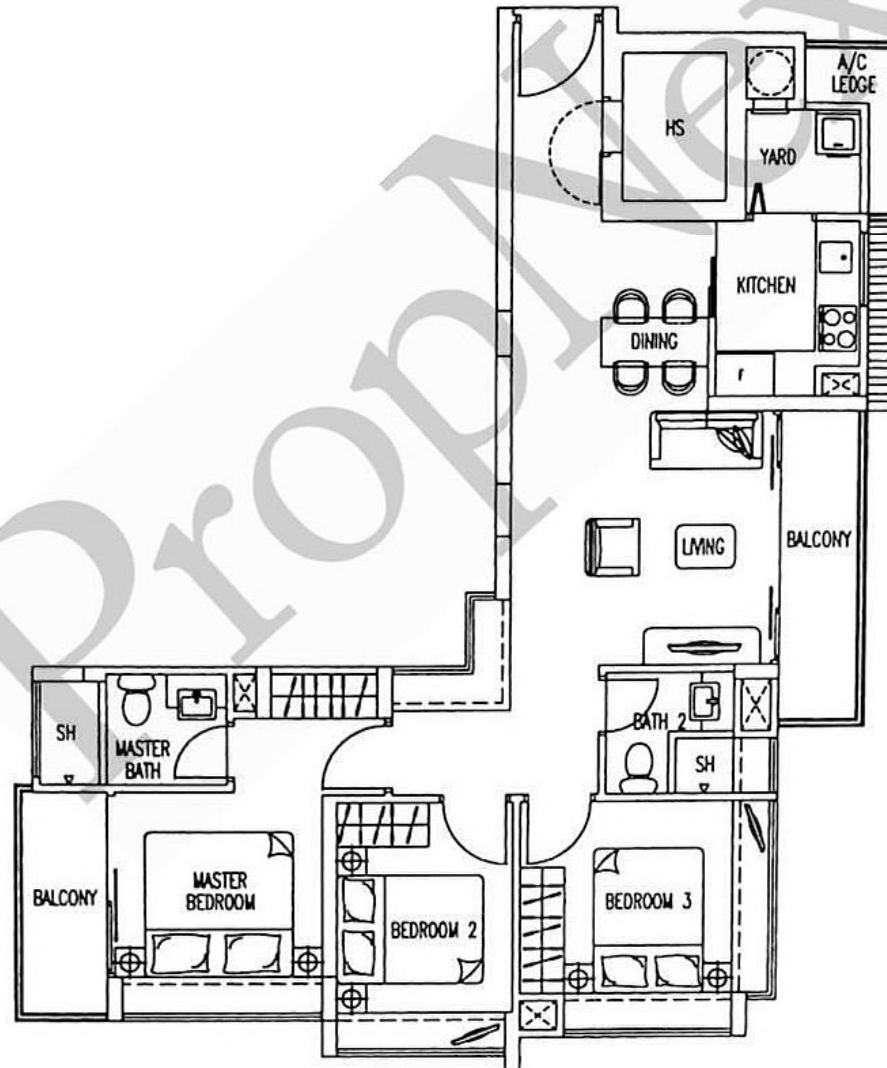


# Type A

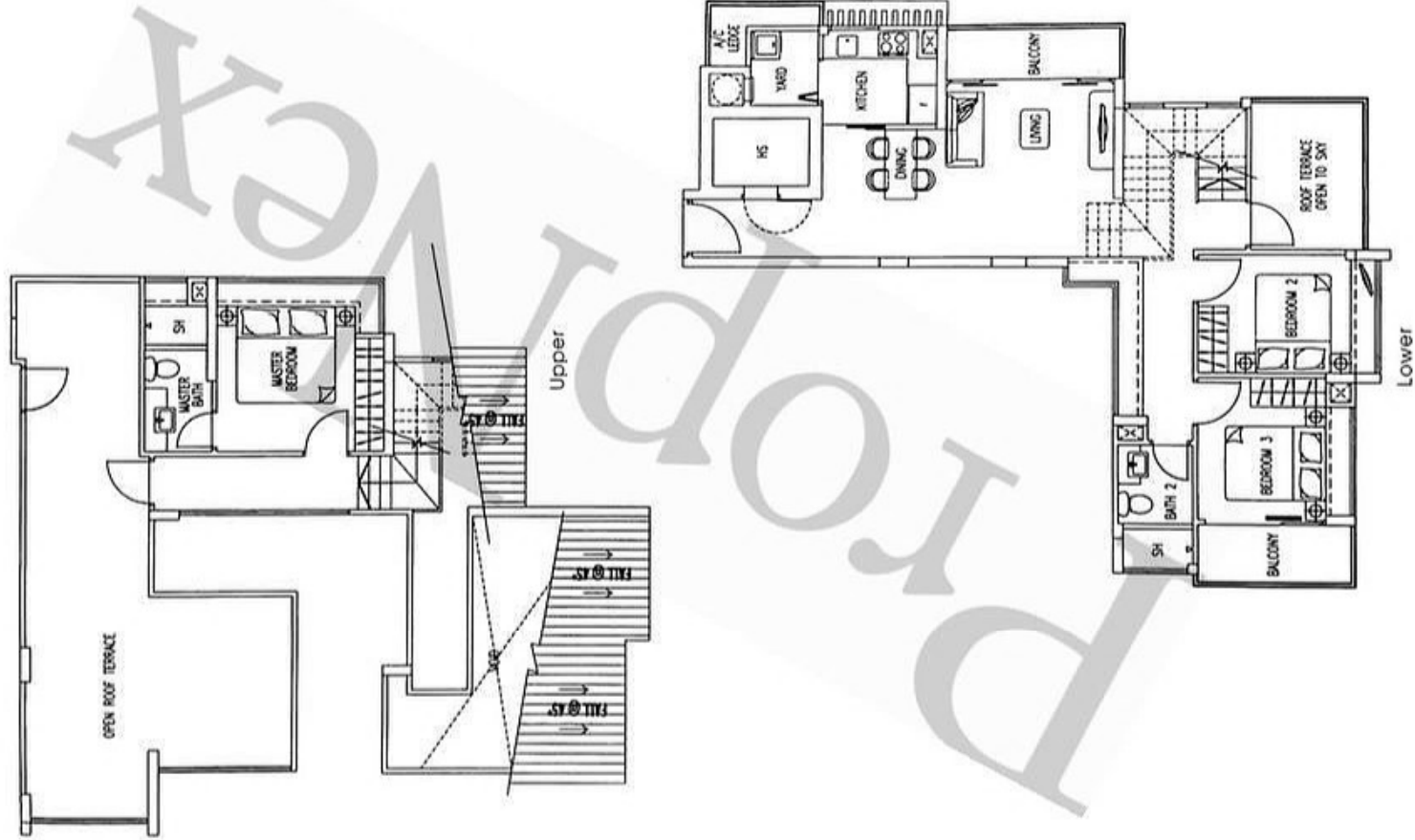
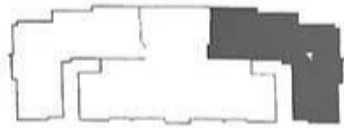
(92 sq.m / 990 sq.ft)

#02-02, #03-02, #04-02



# Type A1

(165 sq.m / 1776 sq.ft)  
#05-02



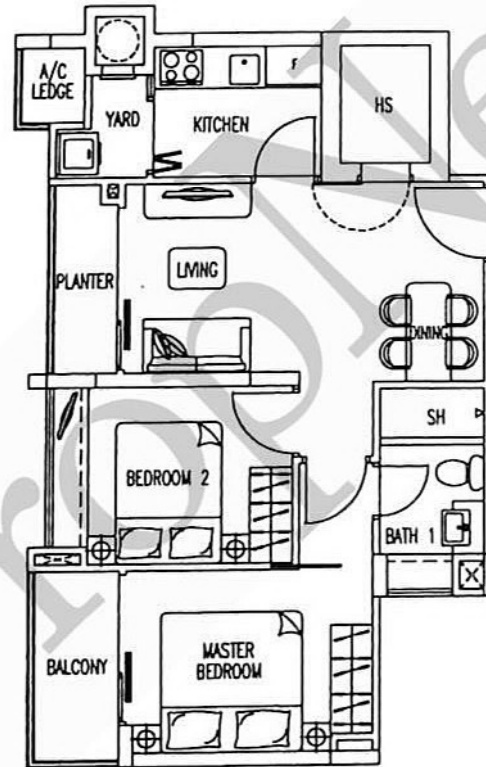


# Type B

(60 sq.m / 646 sq.ft)

#02-03, #03-03,

#04-03, #05-03



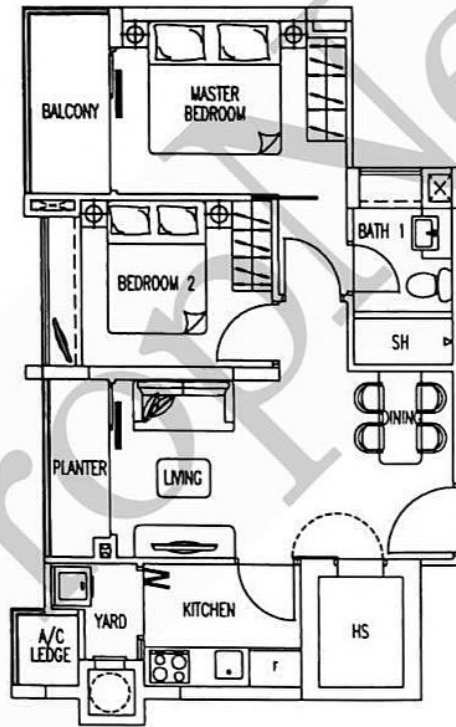
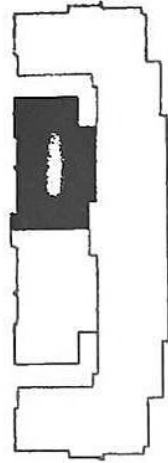
The above floor plans are subject to changes as may be approved by relevant authorities. Plans are not drawn to scale.



# Type C

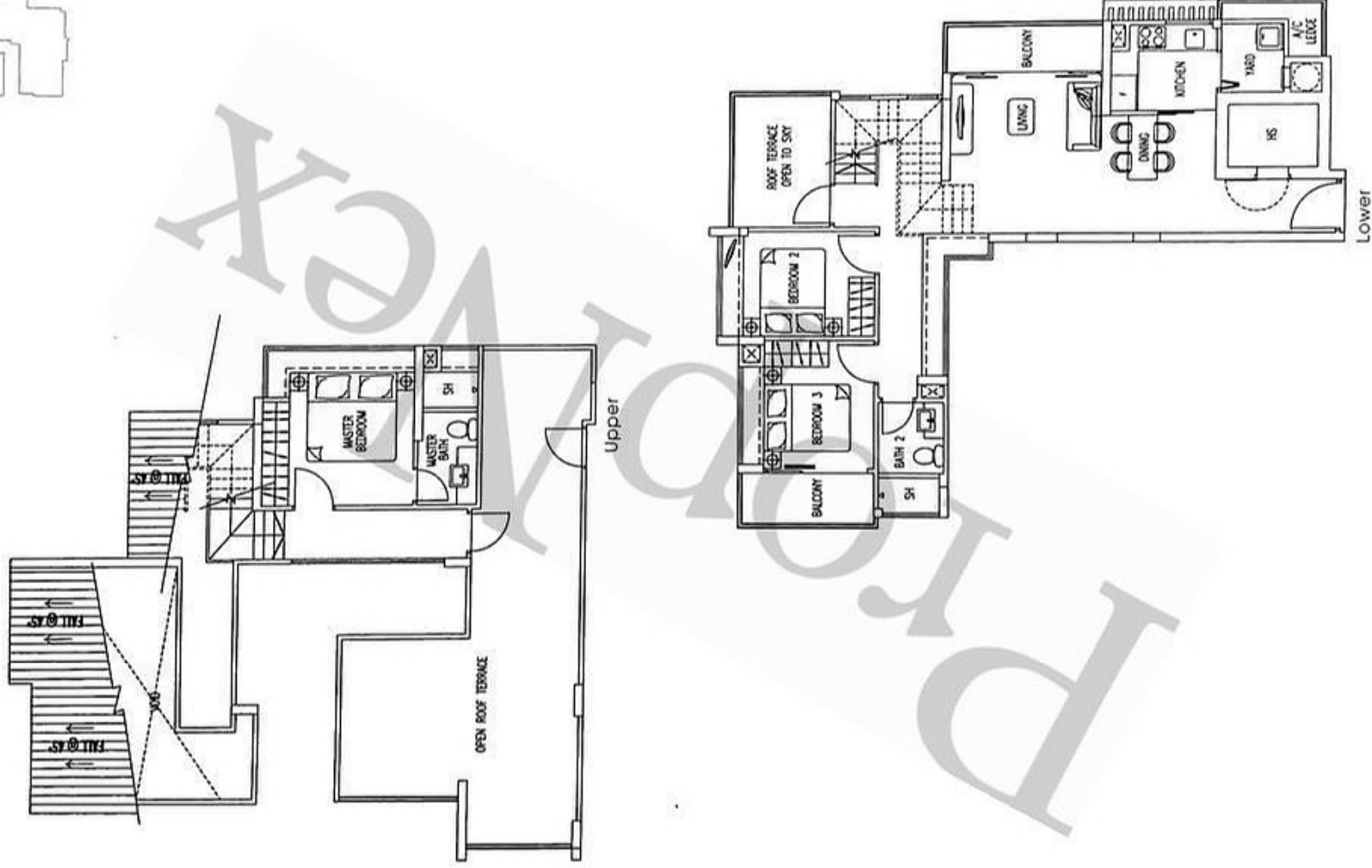
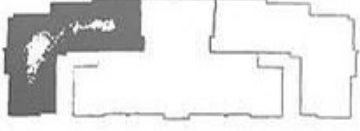
(60 sq.m / 646 sq.ft)

#02-04, #03-04, #04-04, #05-04



# Type D1

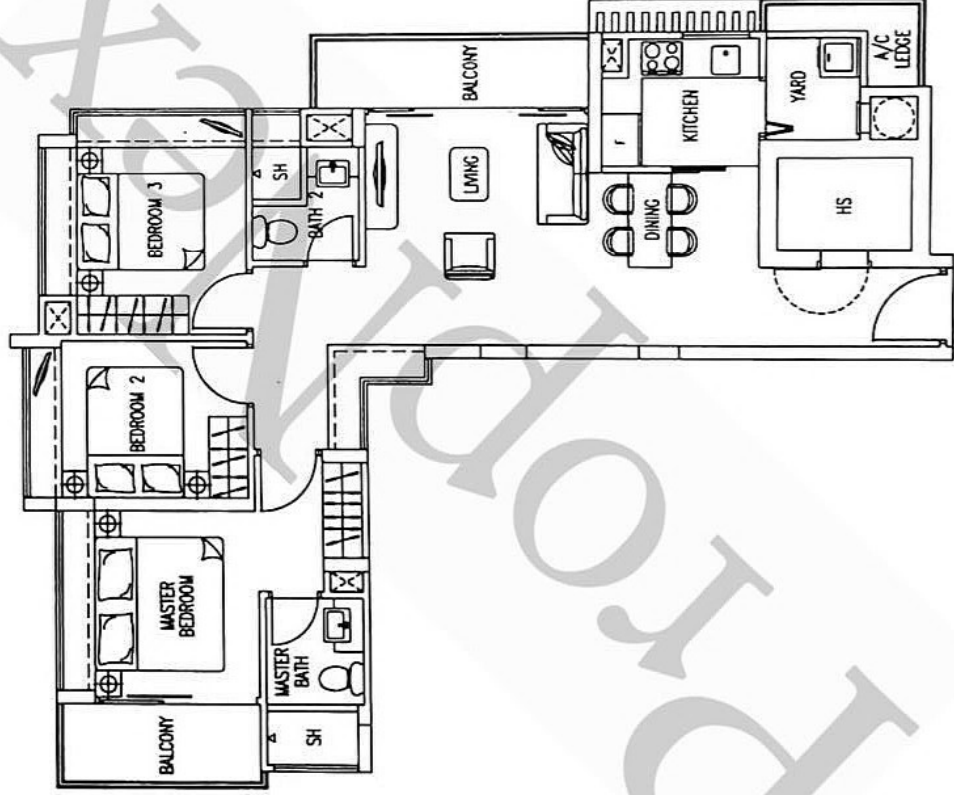
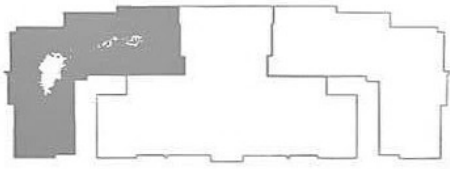
(165 sq.m / 1776 sq.ft)  
#05-01



# Type D

(92 sq.m / 990 sq.ft)

#02-01, #03-01, #04-01



The above floor plans are subject to changes as may be approved by relevant authorities. Plans are not drawn to scale.