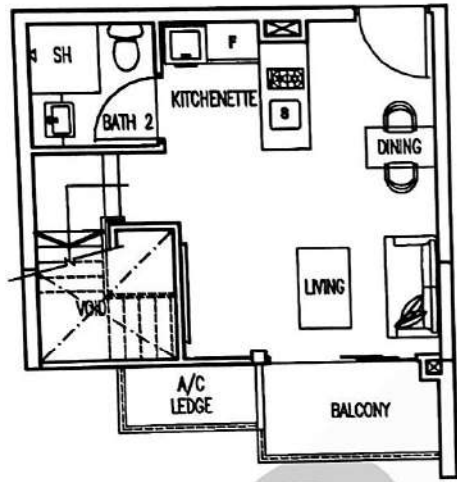


Type N2

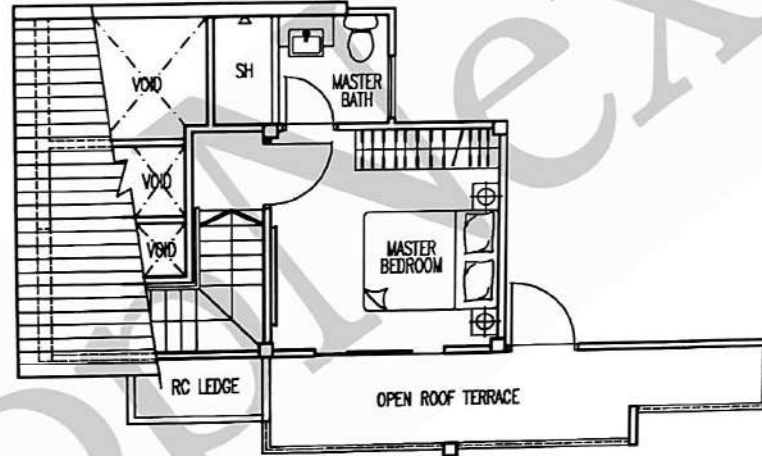
#18-14

73 sqm / 786 sqft

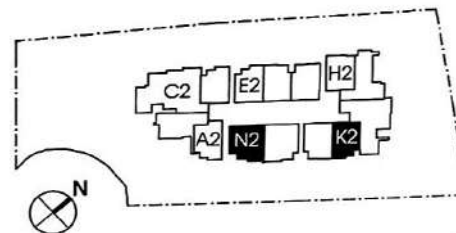
(Inclusive of A/C ledge, balcony
and open roof terrace)



LOWER STOREY



UPPER STOREY

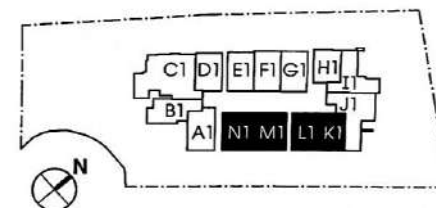
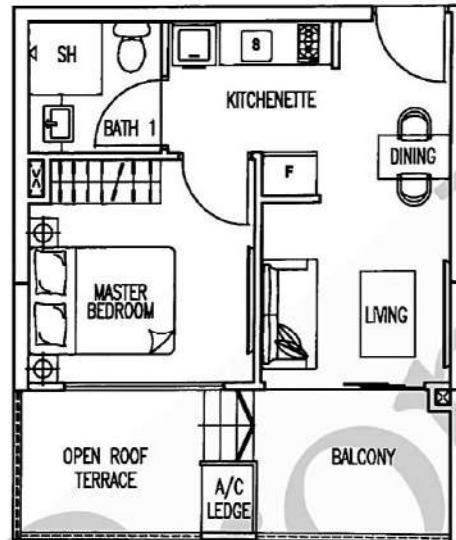


TYPE N1

#08-14

43 sqm / 463 sqft

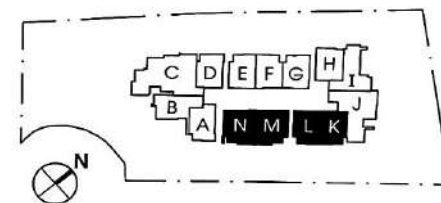
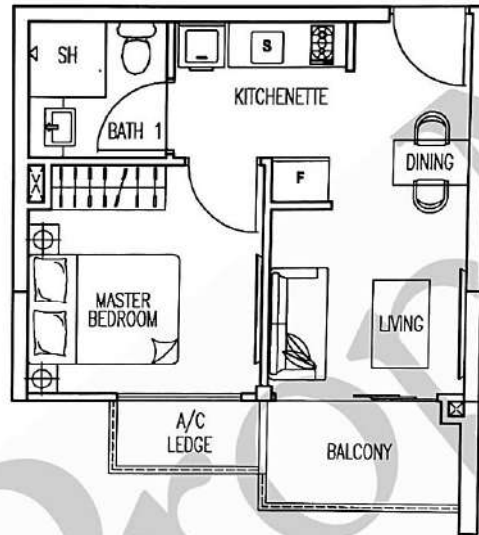
(Inclusive of A/C ledge, balcony and open roof terrace)



Type N

#09-14, #10-14, #11-14, #12-14,
#13-14, #14-14, #15-14, #16-14 & #17-14

38 sqm / 409 sqft
(Inclusive of A/C ledge and balcony)

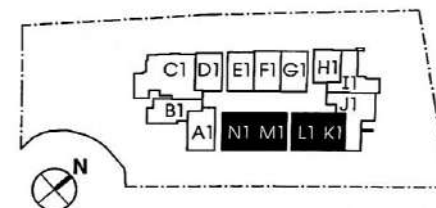
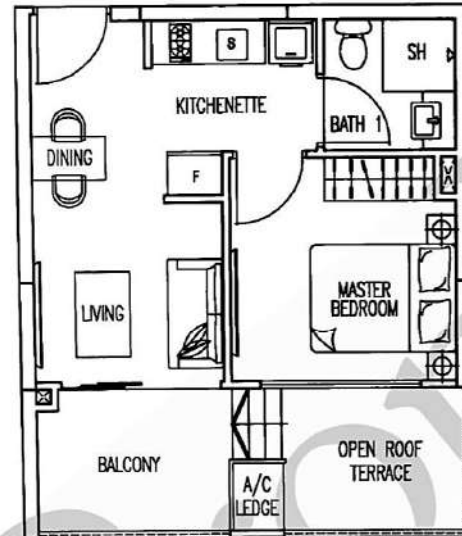


TYPE M1

#08-13

43 sqm / 463 sqft

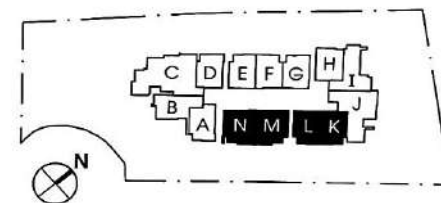
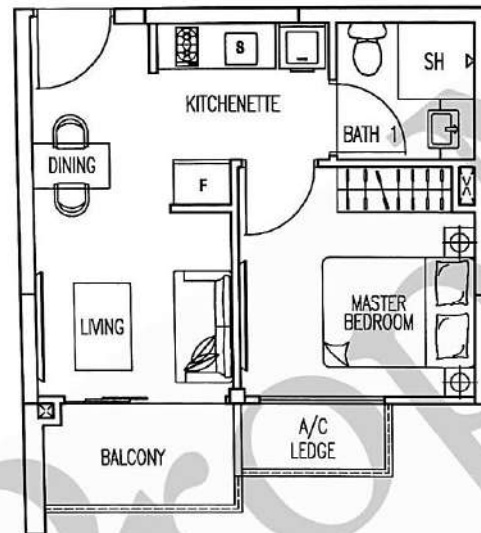
(inclusive of A/C ledge, balcony and open roof terrace)



Type M

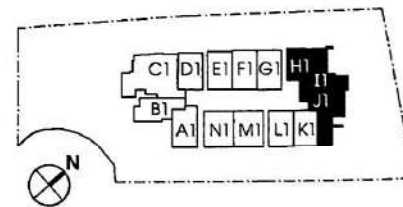
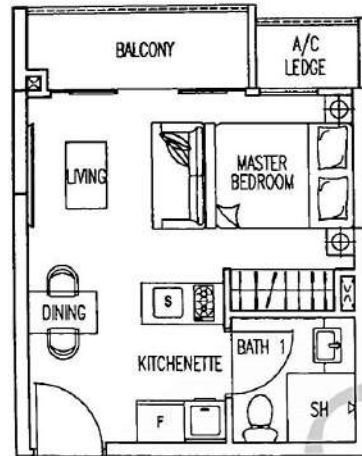
#09-13, #10-13, #11-13, #12-13,
#13-13, #14-13, #15-13, #16-13,
#17-13 & #18-13

38 sqm / 409 sqft
(inclusive of A/C ledge and balcony)



TYPE H1

#08-08
32 sqm / 344 sqft
(inclusive of A/C ledge and balcony)

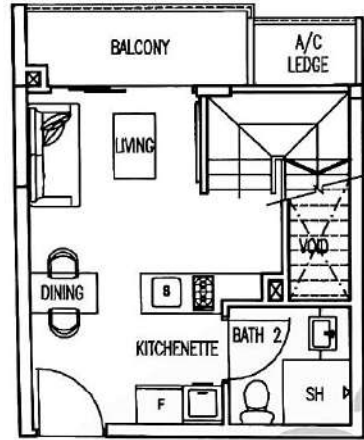


Type H2

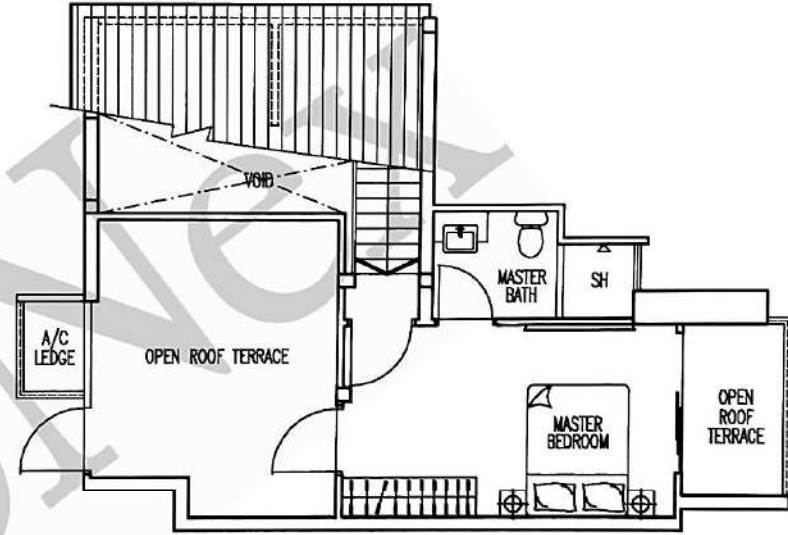
#18-08

82 sqm / 883 sqft

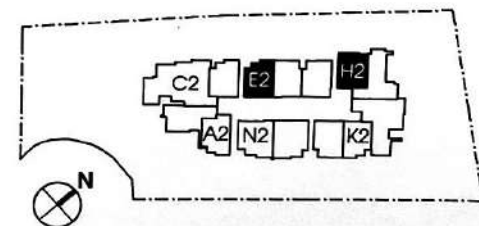
(inclusive of A/C ledge, balcony
and open roof terrace)



LOWER STOREY



UPPER STOREY

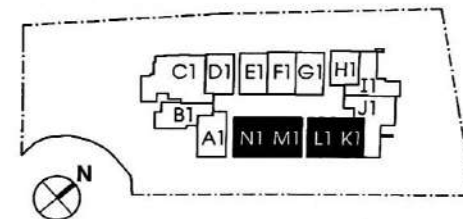
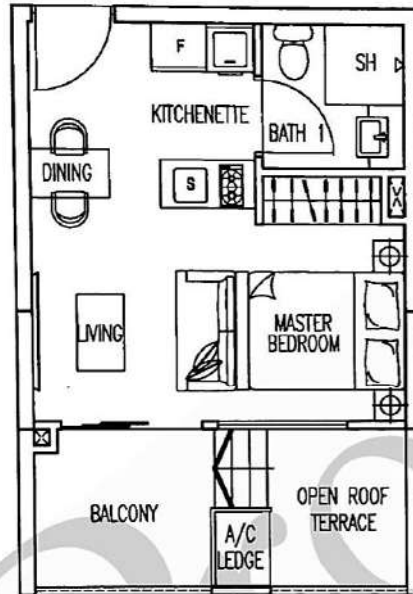


TYPE K1

#08-11

36 sqm / 388 sqft

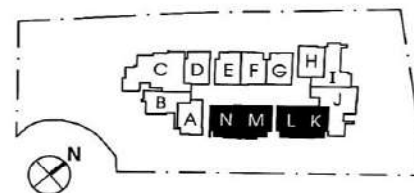
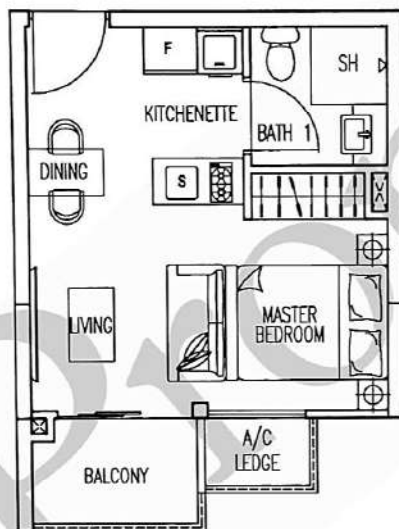
(inclusive of A/C ledge, balcony and open roof terrace)



Type K

#09-11, #10-11, #11-11, #12-11,
#13-11, #14-11, #15-11, #16-11 & #17-11

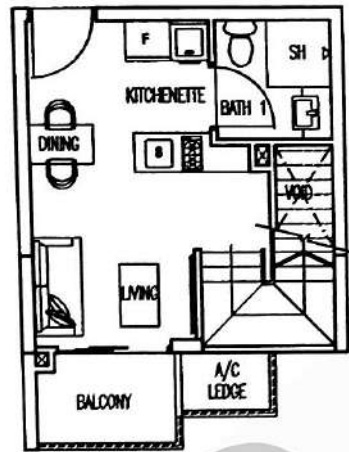
32 sqm / 344 sqft
(inclusive of A/C ledge and balcony)



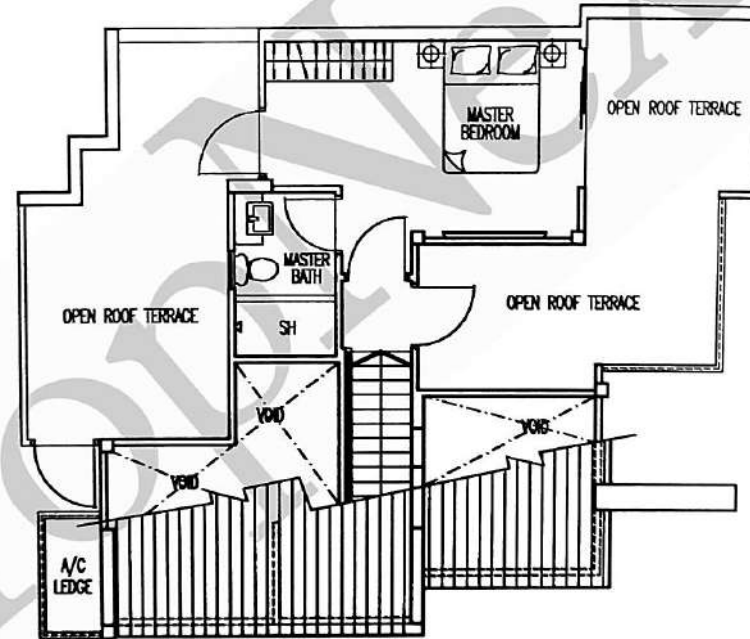
Type K2

#18-11

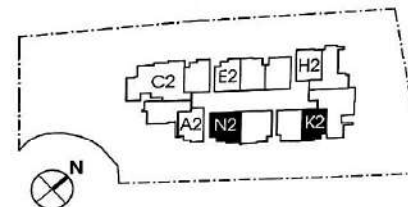
102 sqm / 1098 sqft
(inclusive of A/C ledge, balcony
and open roof terrace)



LOWER STOREY



UPPER STOREY

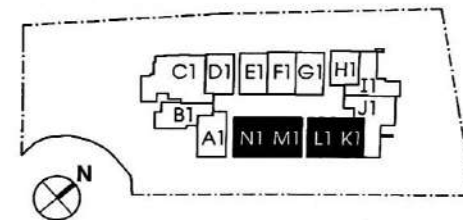
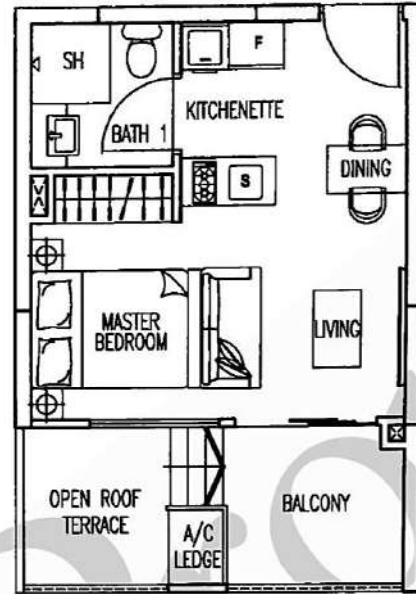


TYPE L1

#08-12

36 sqm / 388 sqft

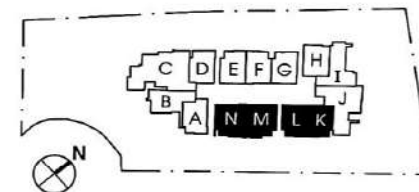
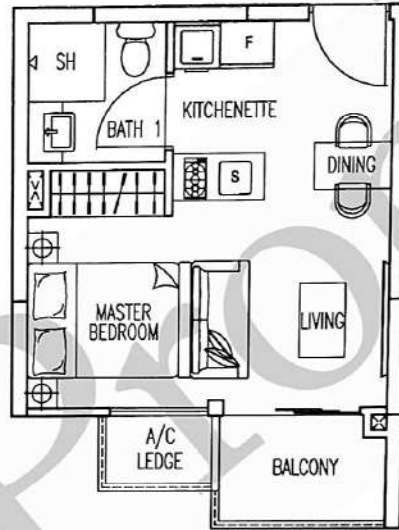
(inclusive of A/C ledge, balcony and open roof terrace)



Type L

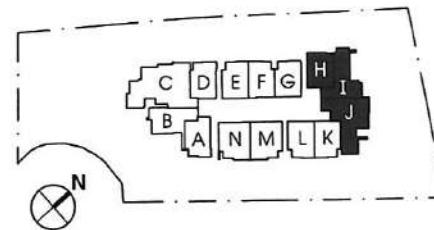
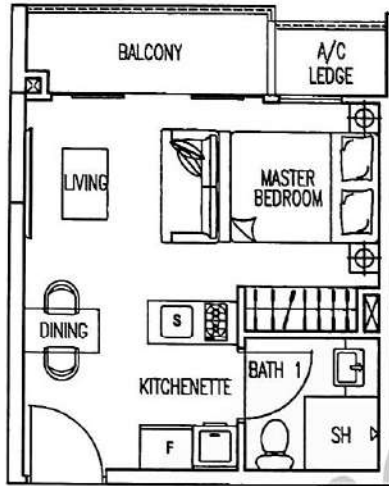
#09-12, #10-12, #11-12, #12-12,
#13-12, #14-12, #15-12, #16-12,
#17-12 & #18-12

32 sqm / 344 sqft
(inclusive of A/C ledge and balcony)



Type H

#09-08, #10-08, #11-08, #12-08,
#13-08, #14-08, #15-08, #16-08 & #17-08
32 sqm / 344 sqft
(Inclusive of A/C ledge and balcony)

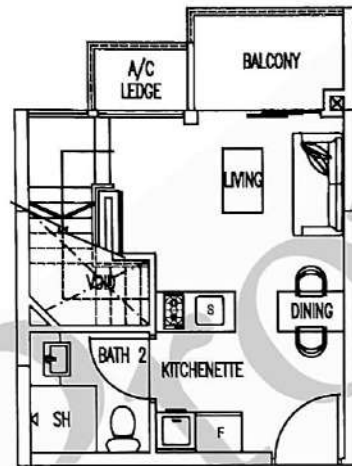


Type E2

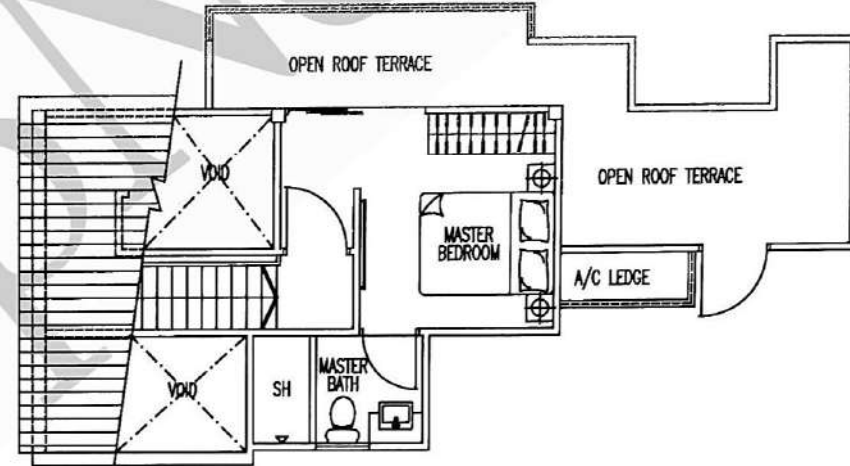
#18-05

77 sqm / 829 sqft

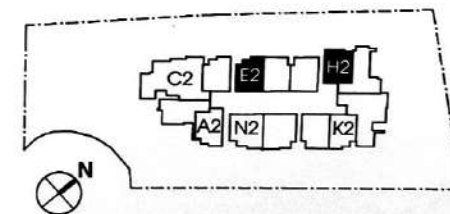
(inclusive of A/C ledge, balcony
and open roof terrace)



LOWER STOREY

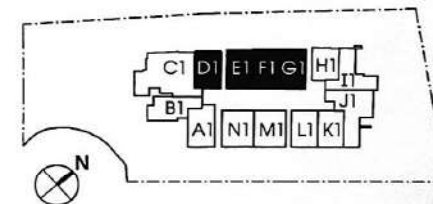
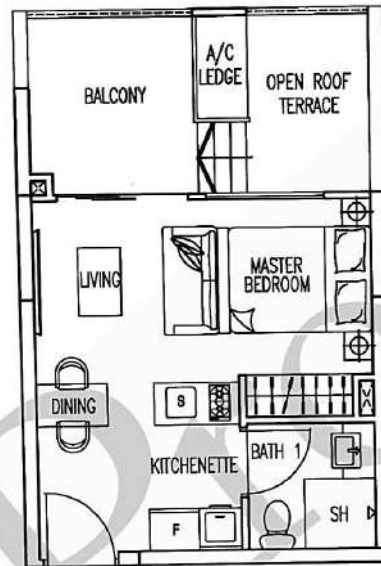


UPPER STOREY



TYPE F1

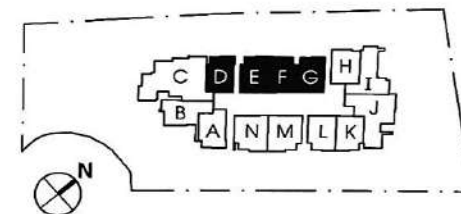
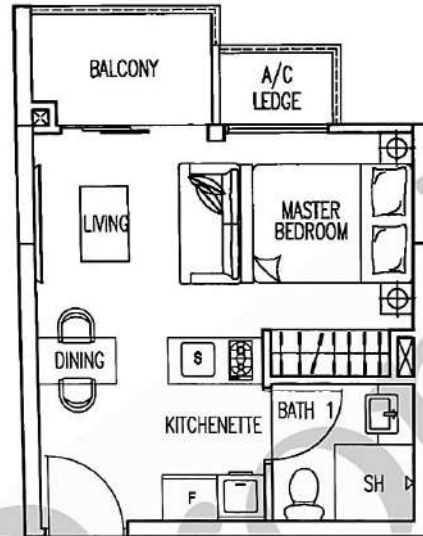
#08-06
38 sqm / 409 sqft
(inclusive of A/C ledge, balcony and
open roof terrace)



Type F

#09-06, #10-06, #11-06, #12-06,
#13-06, #14-06, #15-06, #16-06,
#17-06 & #18-06

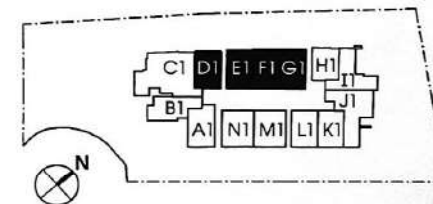
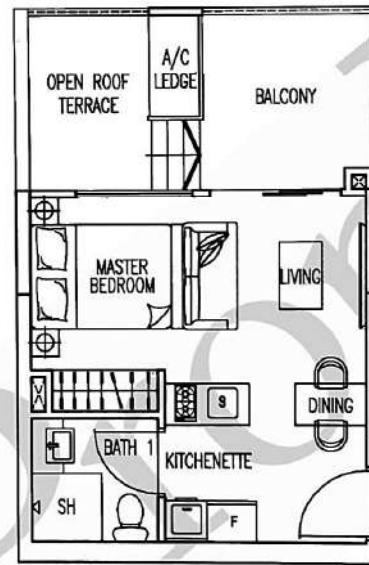
31 sqm / 334 sqft
(inclusive of A/C ledge and balcony)



All plans are subject to amendments as approved by the relevant authorities. Floor areas are approximate measurements and subject to final survey.

TYPE G1

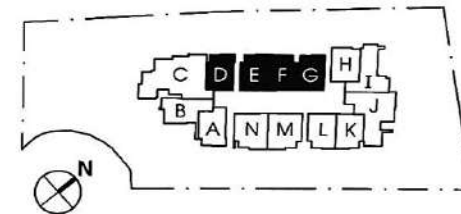
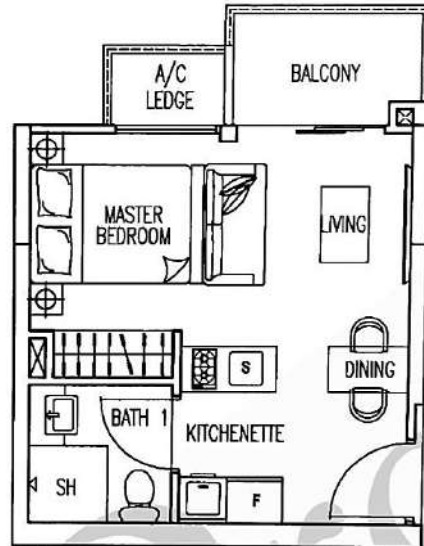
#08-07
38 sqm / 409 sqft
(inclusive of A/C ledge, balcony and
open roof terrace)



Type G

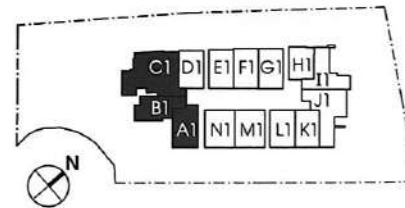
#09-07, #10-07, #11-07, #12-07,
#13-07, #14-07, #15-07, #16-07,
#17-07 & #18-07

31 sqm / 334 sqft
(inclusive of A/C ledge and balcony)



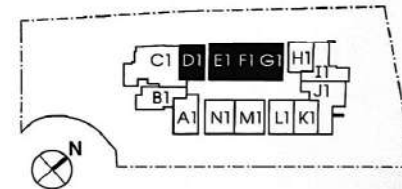
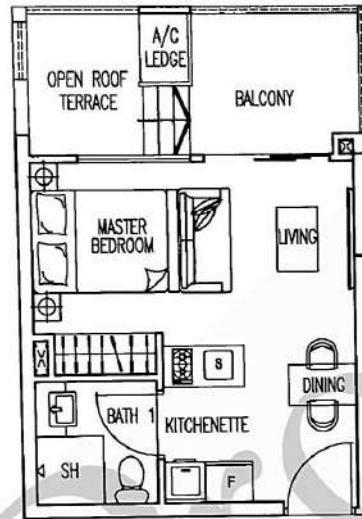
TYPE A1

#08-01
39 sqm / 420 sqft
(inclusive of A/C ledge, balcony and
open roof terrace)



TYPE D1

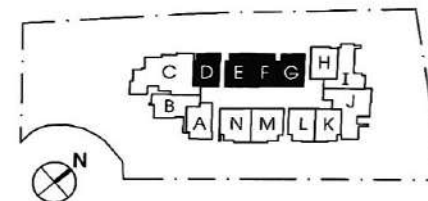
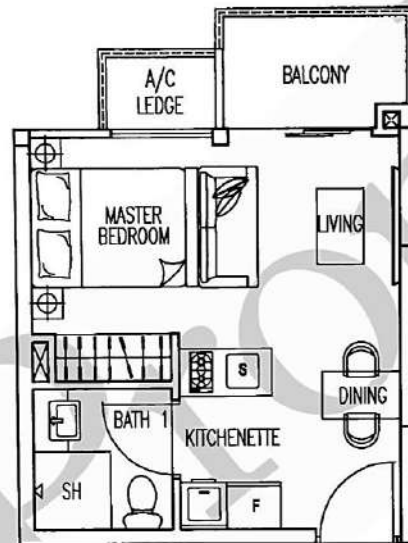
#08-04
36 sqm / 388 sqft
(inclusive of A/C ledge, balcony and
open roof terrace)



Type D

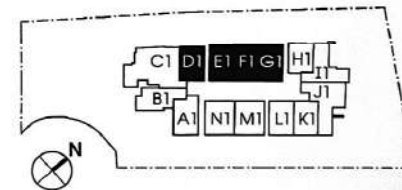
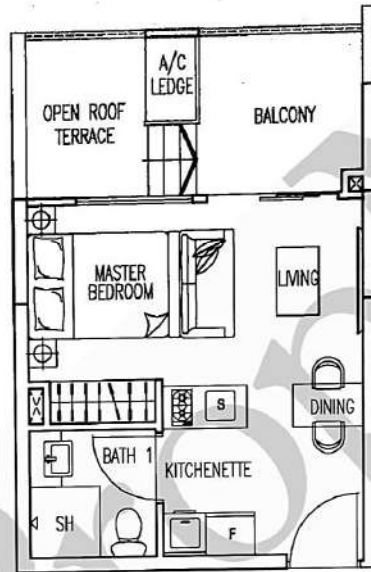
#09-04, #10-04, #11-04, #12-04,
#13-04, #14-04, #15-04, #16-04,
#17-04 & #18-04

31 sqm / 334 sqft
(Inclusive of A/C ledge and balcony)



TYPE E1

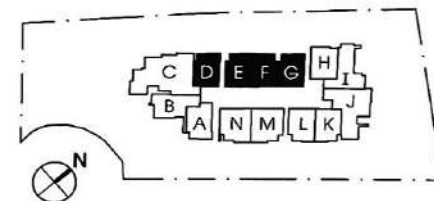
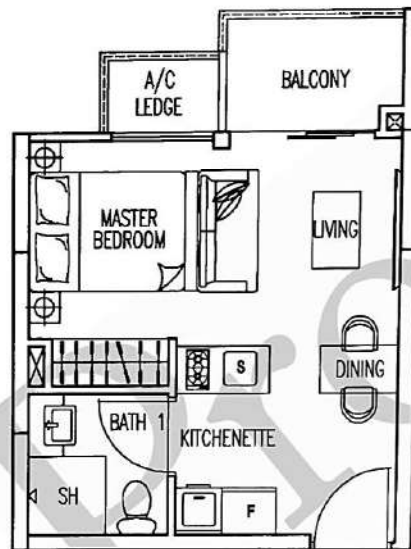
#08-05
37 sqm / 398 sqft
(inclusive of A/C ledge, balcony and
open roof terrace)



Type E

#09-05, #10-05, #11-05, #12-05,
#13-05, #14-05, #15-05, #16-05 & #17-05

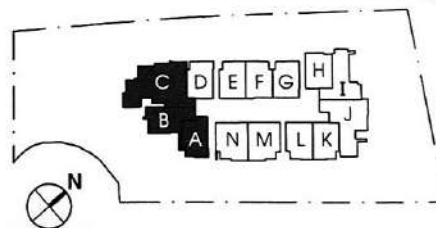
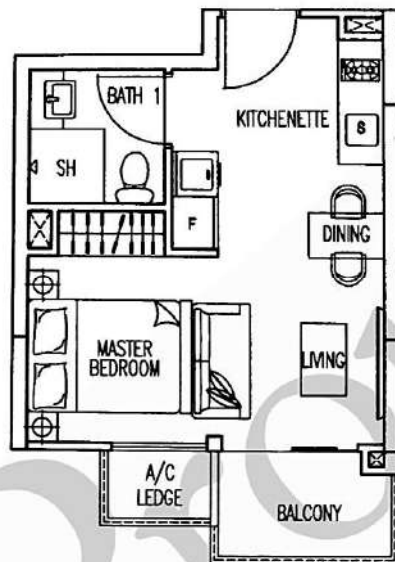
31 sqm / 334 sqft
(inclusive of A/C ledge and balcony)



Type A

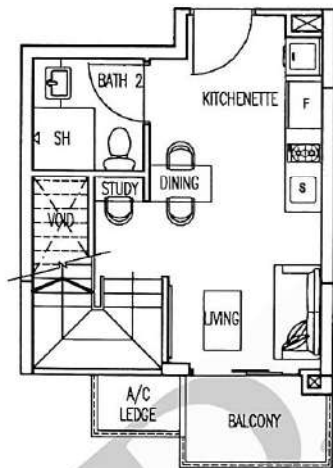
#09-01, #10-01, #11-01, #12-01,
#13-01, #14-01, #15-01, #16-01 & #17-01

32 sqm / 344 sqft
(inclusive of A/C ledge and balcony)

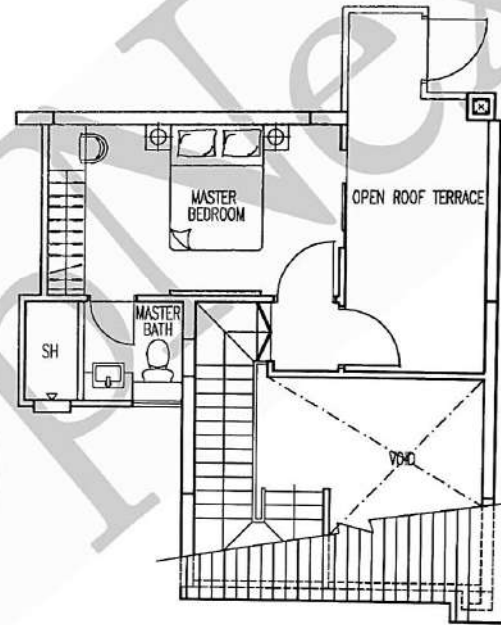


Type A2

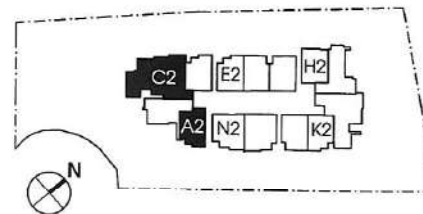
#18-01
72 sqm / 775 sqft
(inclusive of A/C ledge, balcony
and open roof terrace)



LOWER STOREY

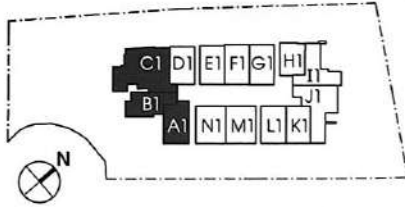
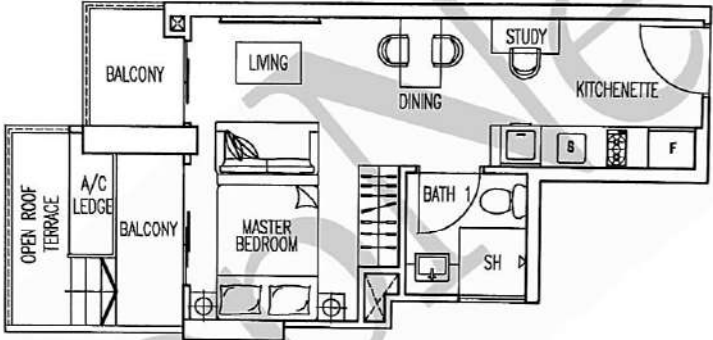


UPPER STOREY



TYPE B1

#08-02
39 sqm / 420 sqft
(inclusive of A/C ledge, balcony and open roof terrace)

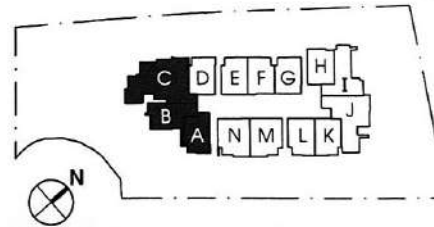
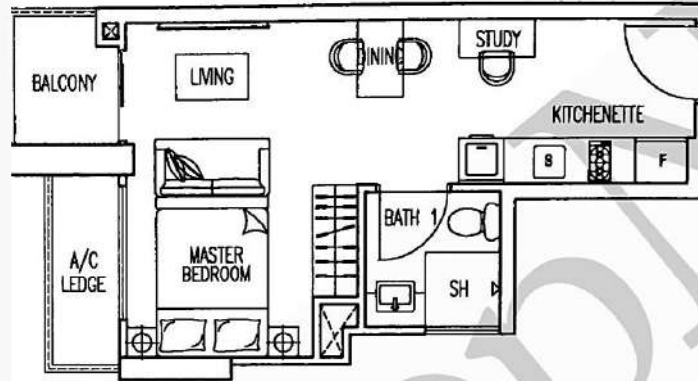


All plans are subject to amendments as approved by the relevant authorities. Floor areas are approximate measurements and subject to final survey.

Type B

#09-02, #10-02, #11-02, #12-02,
#13-02, #14-02, #15-02, #16-02,
#17-02 & #18-02

35 sqm / 377 sqft
(Inclusive of A/C ledge and balcony)

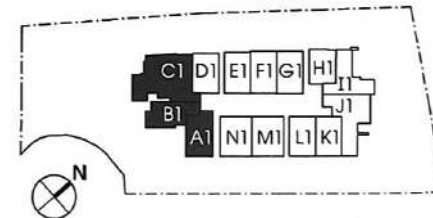
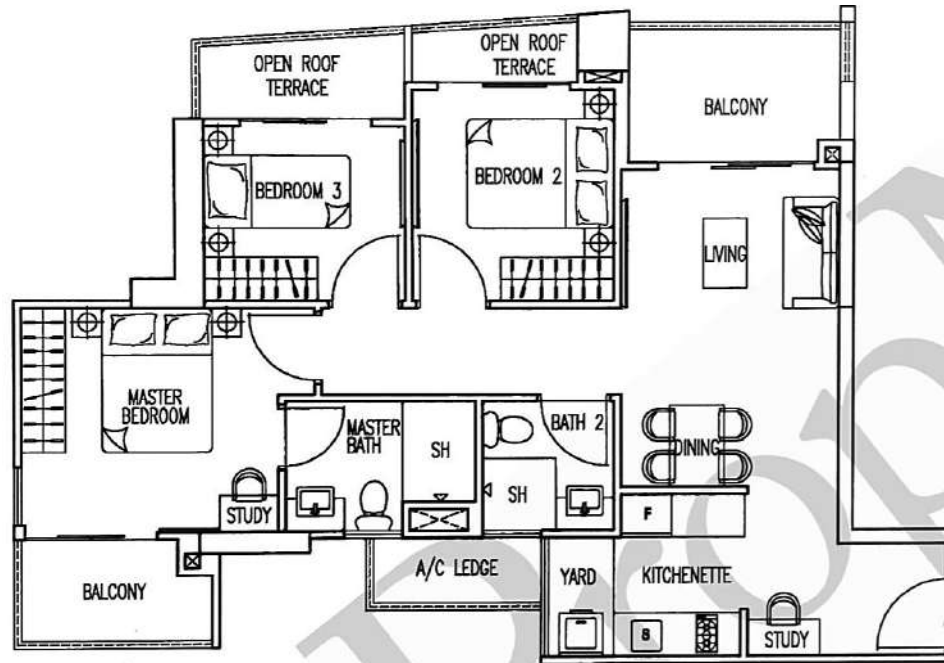


TYPE C1

#08-03

86 sqm / 926 sqft

(inclusive of A/C ledge, balcony and open roof terrace)



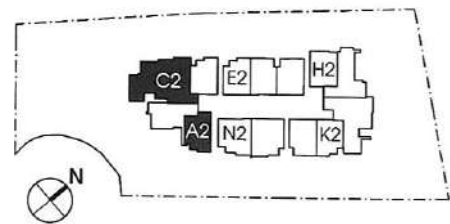
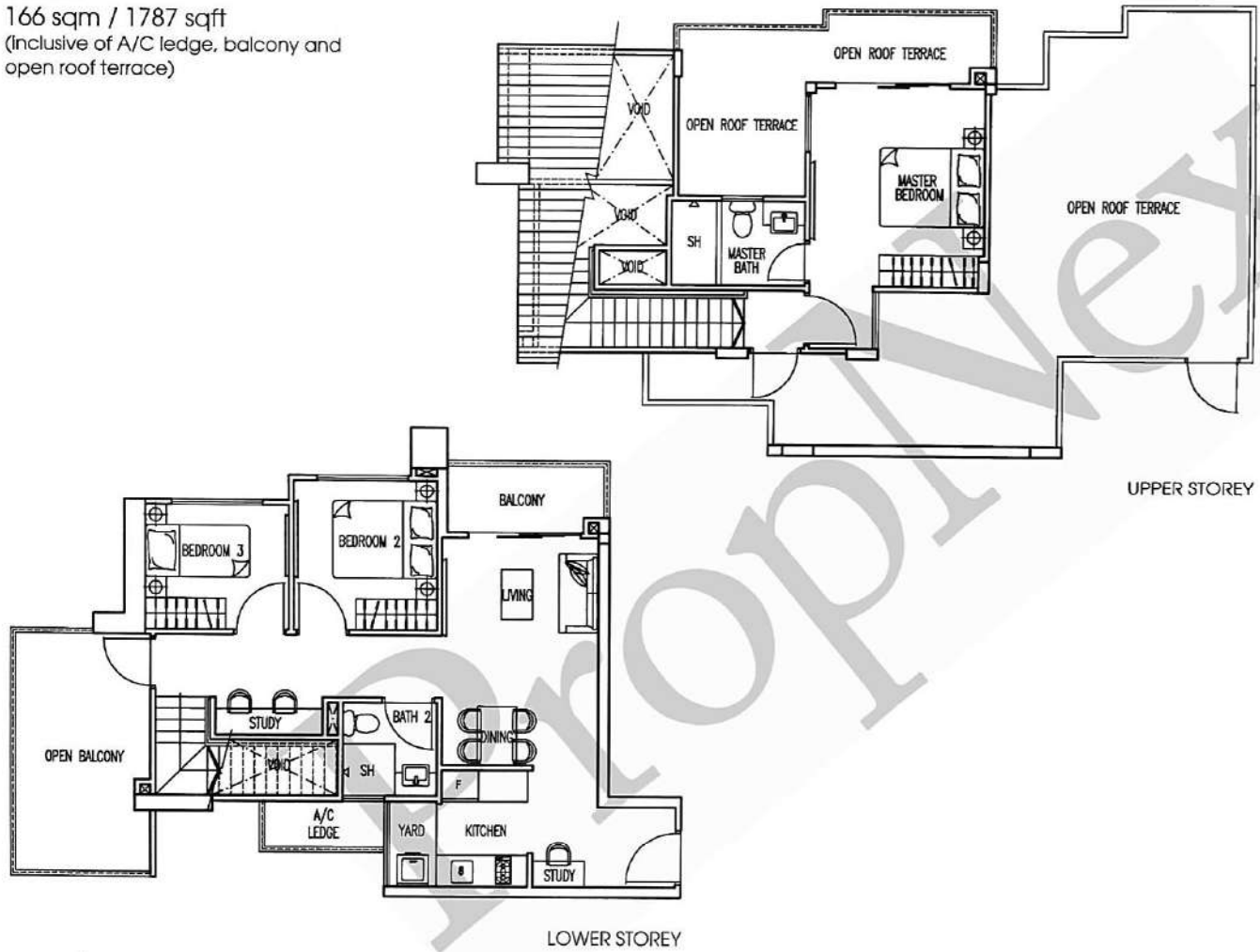
All plans are subject to amendments as approved by the relevant authorities. Floor areas are approximate measurements and subject to final survey.

Type C2

#18-03

166 sqm / 1787 sqft

(Inclusive of A/C ledge, balcony and open roof terrace)

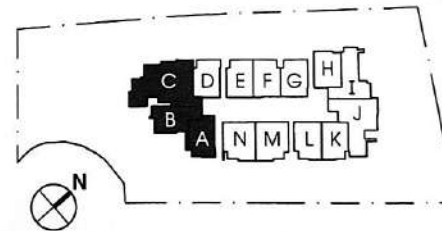
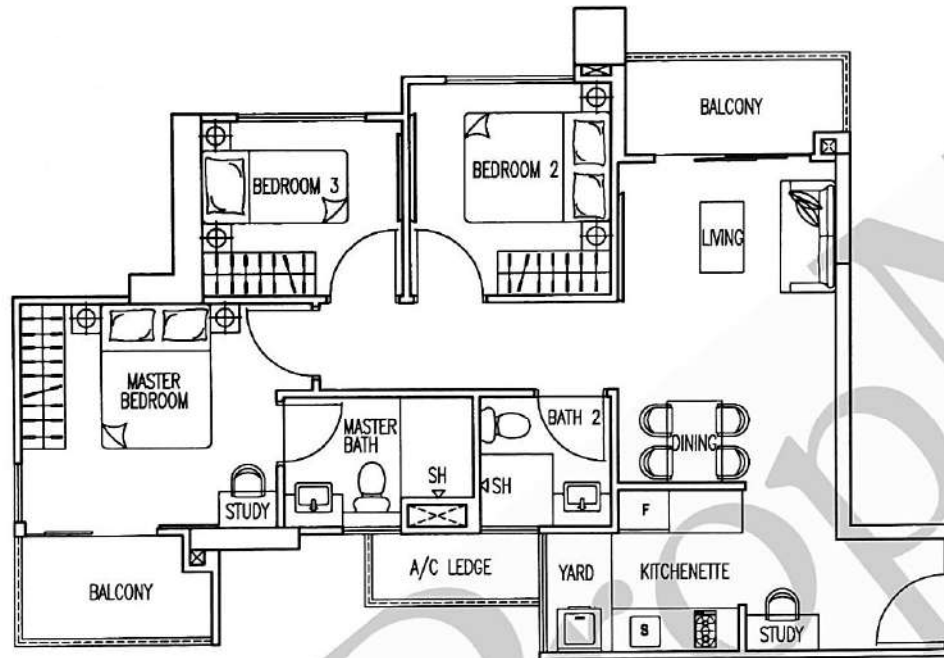


All plans are subject to amendments as approved by the relevant authorities. Floor areas are approximate measurements and subject to final survey.

Type C

#09-03, #10-03, #11-03, #12-03,
#13-03, #14-03, #15-03, #16-03 & #17-03

80 sqm / 861 sqft ^{8,175mil}
(inclusive of A/C ledge and balcony)



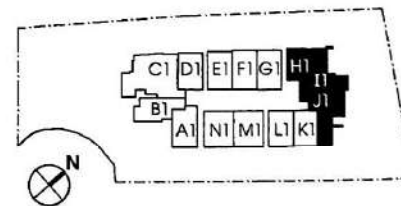
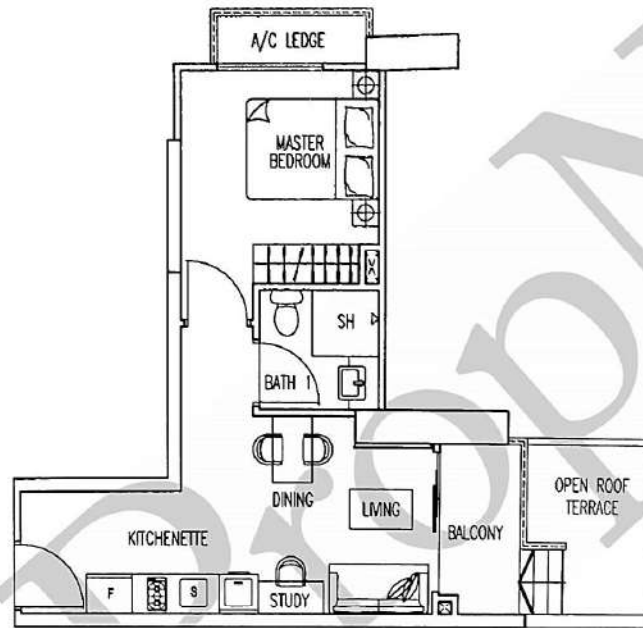
All plans are subject to amendments as approved by the relevant authorities. Floor areas are approximate measurements and subject to final survey.

TYPE I1

#08-09

45 sqm / 484 sqft

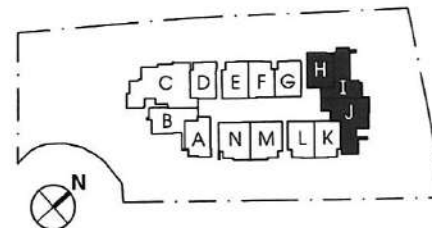
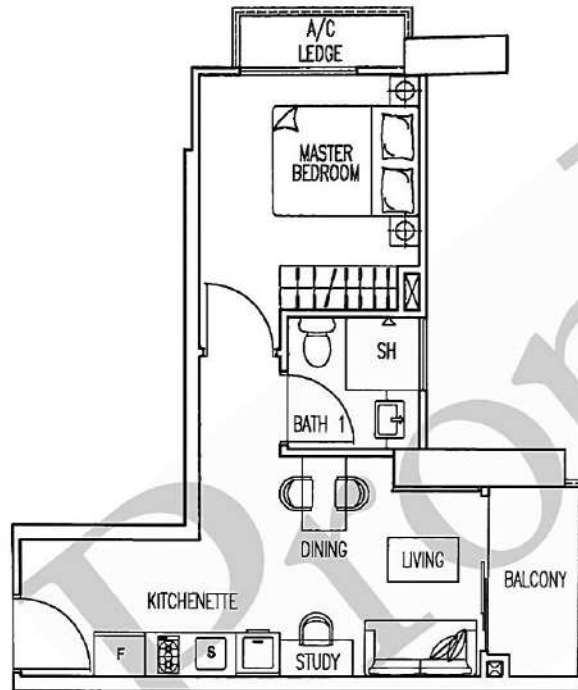
(inclusive of A/C ledge, balcony and open roof terrace)



Type I

#09-09, #10-09, #11-09, #12-09,
#13-09, #14-09, #15-09, #16-09,
#17-09 & #18-09

40 sqm / 431 sqft
(Inclusive of A/C ledge and balcony)

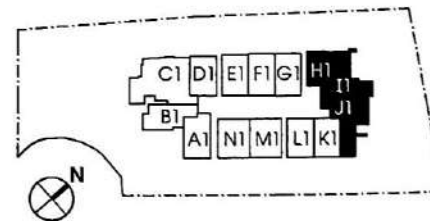
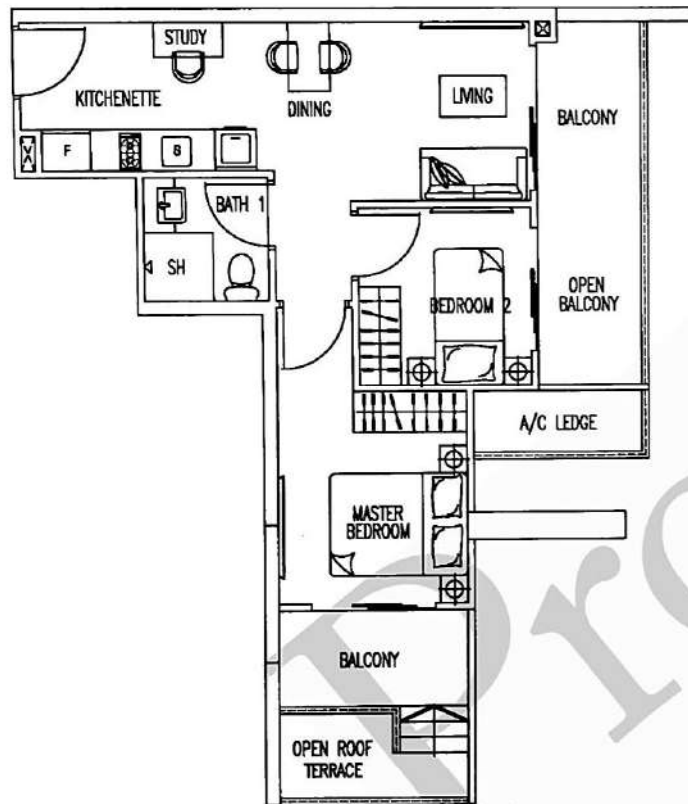


TYPE J1

#08-10

61 sqm / 657 sqft

(inclusive of A/C ledge, balcony and open roof terrace)



All plans are subject to amendments as approved by the relevant authorities. Floor areas are approximate measurements and subject to final survey.

Type J

#09-10, #10-10, #11-10, #12-10,
#13-10, #14-10, #15-10, #16-10,
#17-10 & #18-10

54 sqm / 581 sqft
(inclusive of A/C ledge and balcony)

