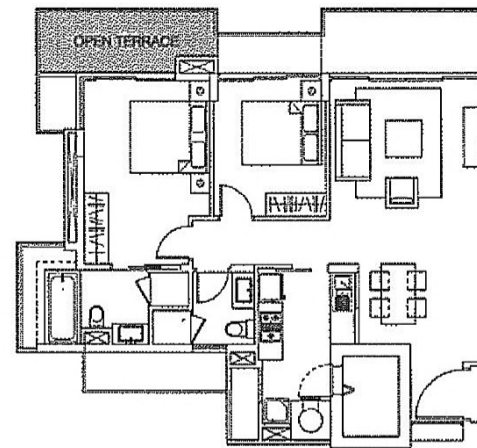


TYPE A1



TYPE A1a

The difference between Type A1 and A1a is in the shaded area indicated
The rest of their layouts are otherwise identical

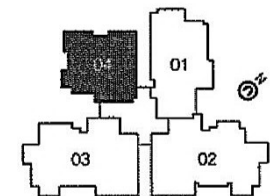
TYPE A1
110 Sq.m. / 1184 Sq.ft.

#05-04 to #10-04

TYPE A1a
110 Sq.m. / 1184 Sq.ft.

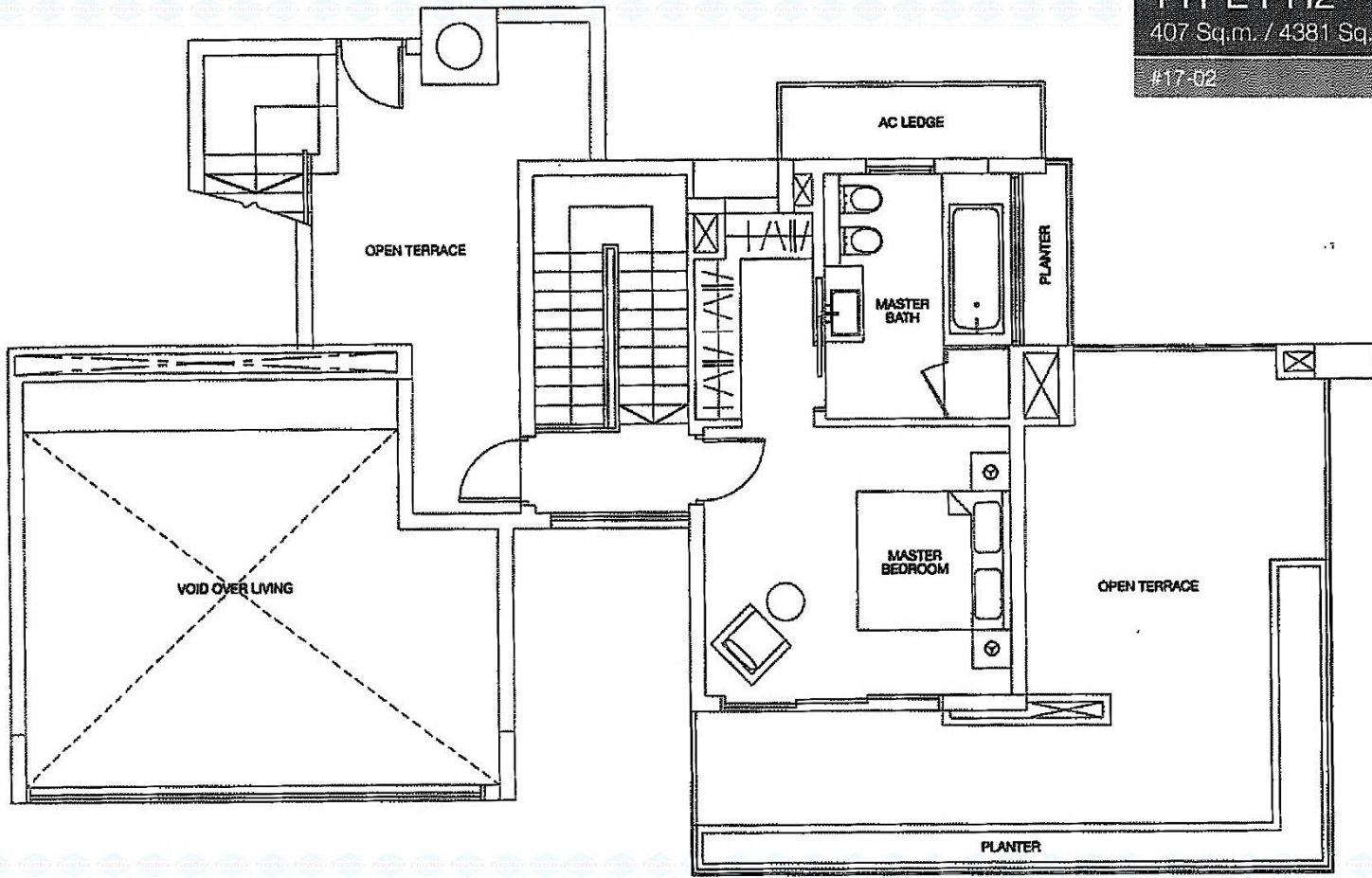
#11-01

Living / Dining	30.3 Sq.m. / 326 Sq.ft.
Master Bedroom	13.8 Sq.m. / 149 Sq.ft.

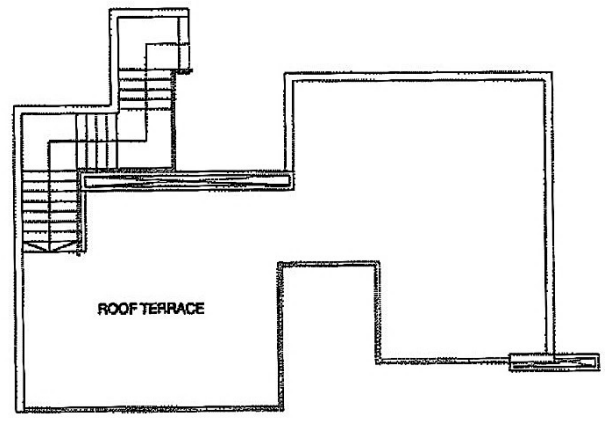


- Note
1. Areas include PES, AC ledges, bay windows, planters and open terraces (where applicable).
 2. All plans are not to scale and subject to change as may be approved by the relevant authorities.
 3. All floor areas are approximate only and subject to survey

TYPE PH2
407 Sq.m. / 4381 Sq.ft.
#17-02



Level 2

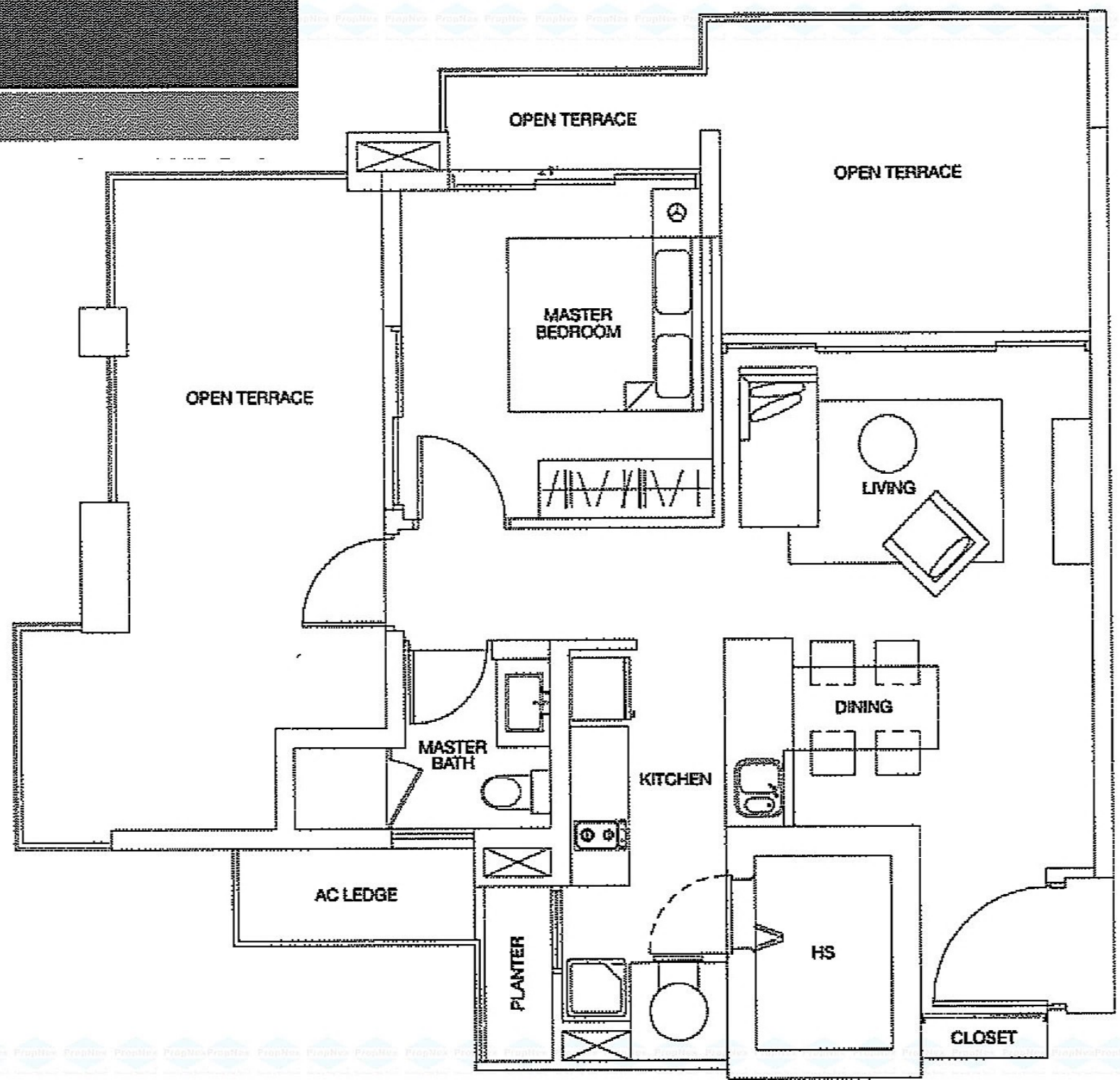


Level 3
(not to scale)

TYPE ST

99 Sq.m. / 1066 Sq.ft.

#12-04

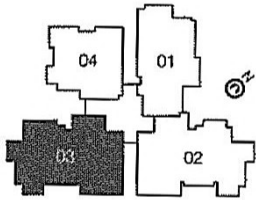


TYPE PH1

421 Sq.m. / 4532 Sq.ft.

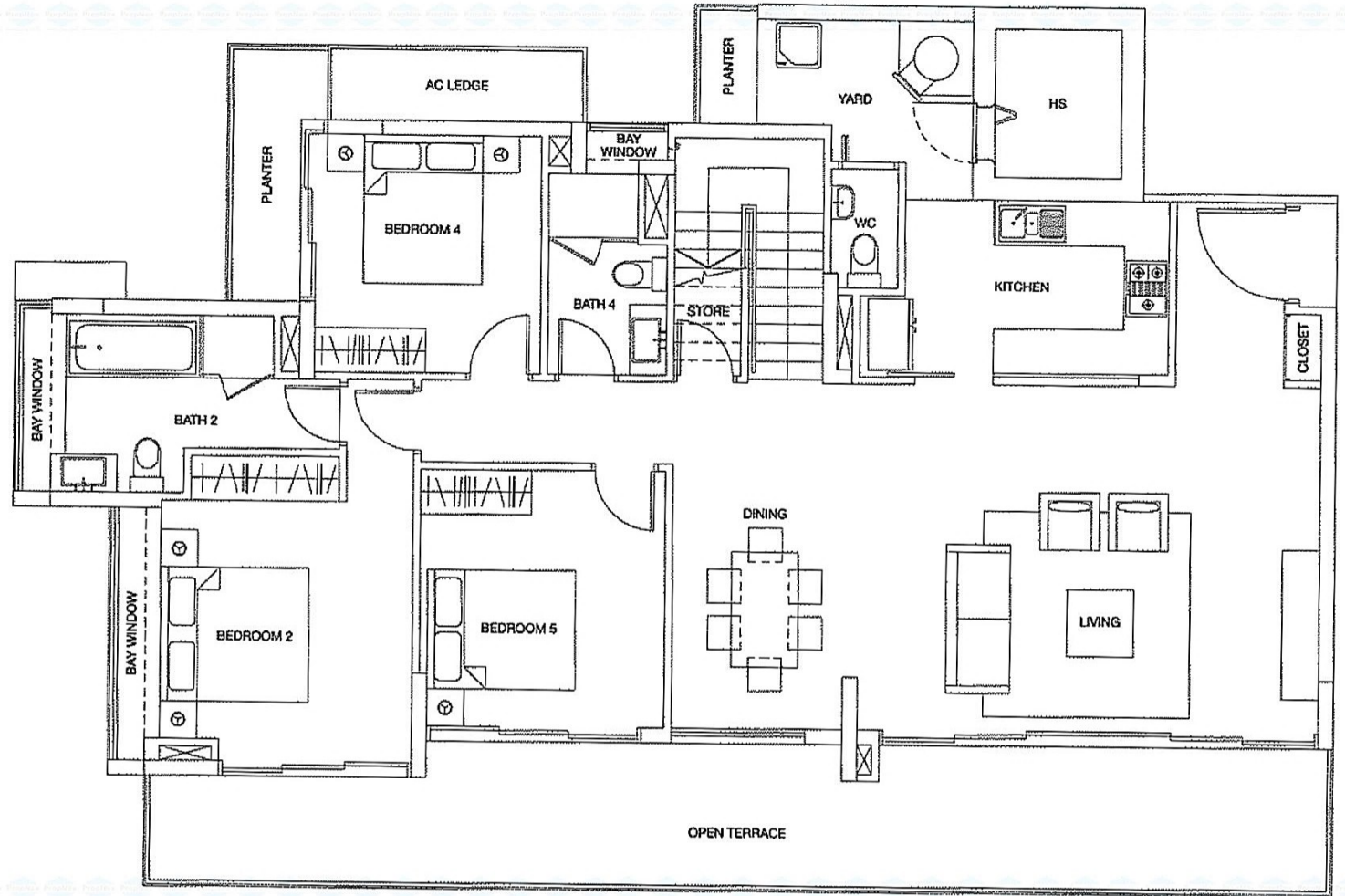
#17-03

Living / Dining	47.8 Sq.m. / 515 Sq.ft.
Master Bedroom	22.0 Sq.m. / 237 Sq.ft.
Bedroom 2	16.7 Sq.m. / 180 Sq.ft.
Bedroom 3	10.0 Sq.m. / 108 Sq.ft.
Bedroom 4	10.0 Sq.m. / 108 Sq.ft.
Bedroom 5	11.3 Sq.m. / 122 Sq.ft.
Open Terrace	72.0 Sq.m. / 775 Sq.ft.
Roof Terrace	89.0 Sq.m. / 958 Sq.ft.
Strata Void	29.0 Sq.m. / 312 Sq.ft.

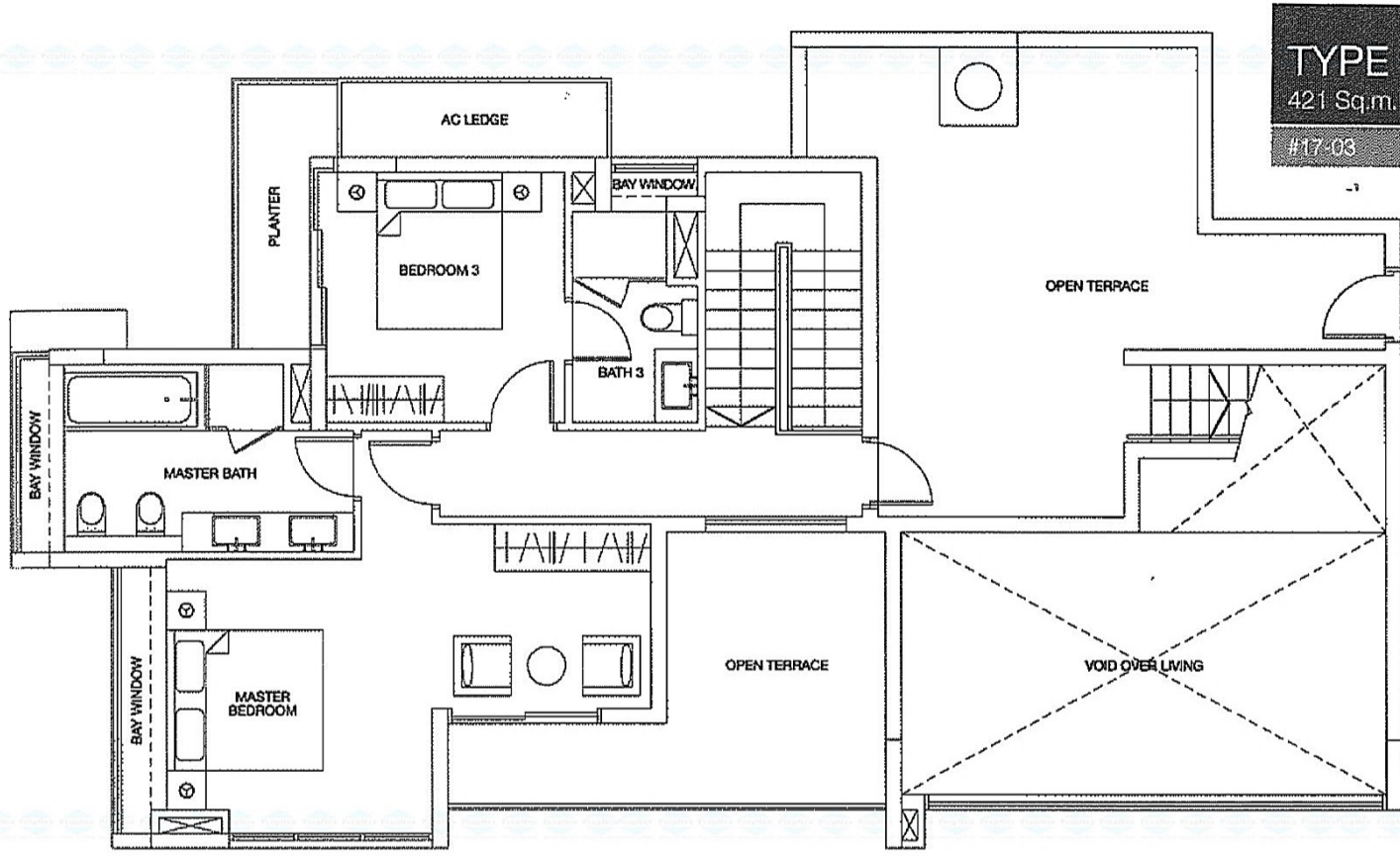


Note

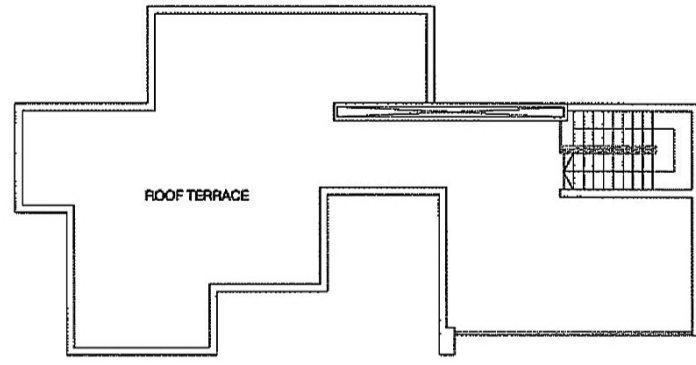
1. Areas include FES, AC ledges, bay windows, planters, open terraces and roof terrace (where applicable)
2. All plans are not to scale and subject to change as may be approved by the relevant authorities
3. All floor areas are approximate only and subject to survey.



Level 1



TYPE PH1
 421 Sq.m. / 4532 Sq.ft.
 #17-03



Level 2

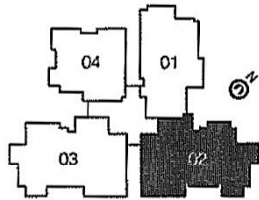
Level 3
 (not to scale)

TYPE PH2

407 Sq.m. / 4381 Sq.ft.

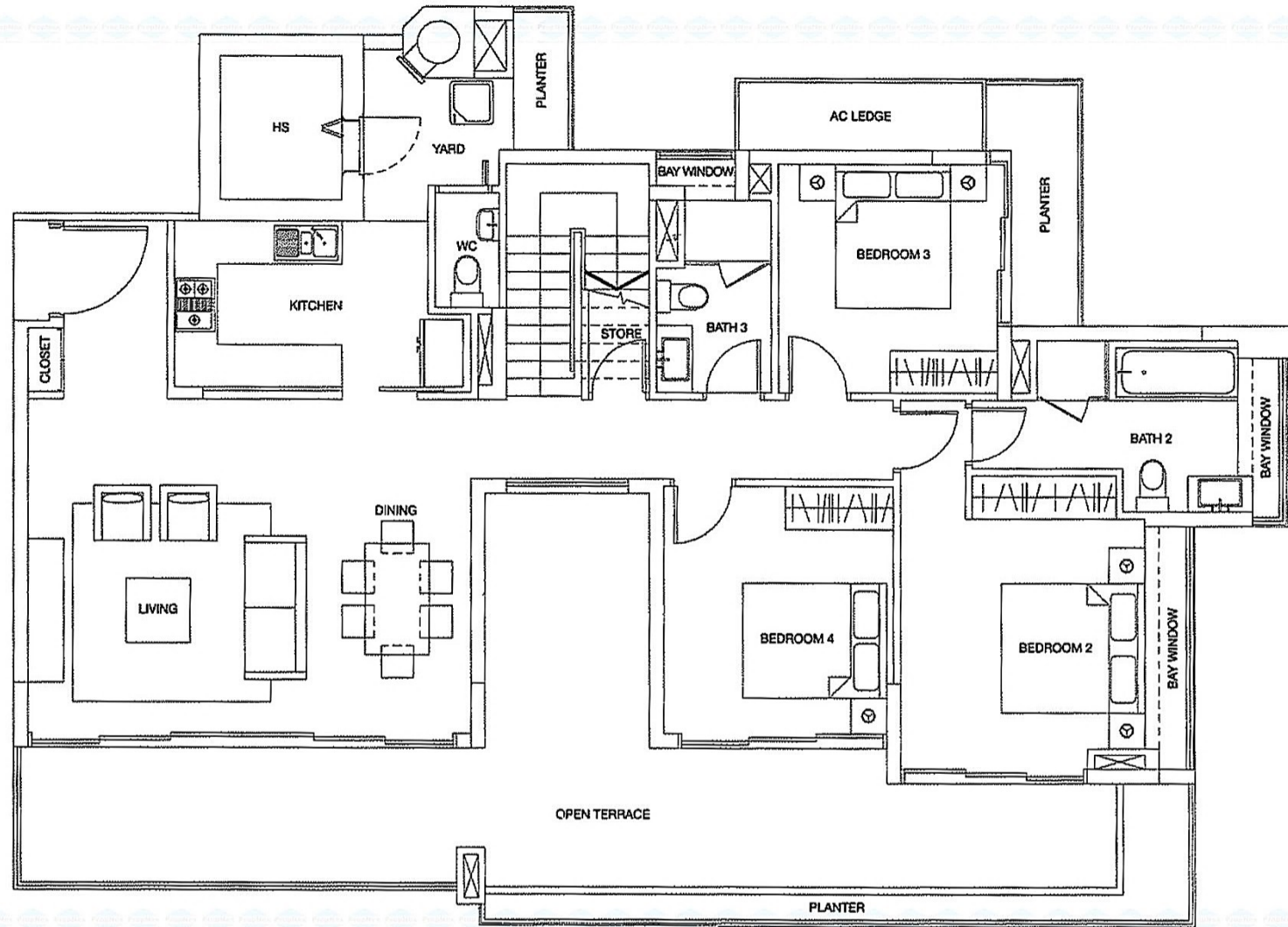
J17-02

Living / Dining	39.0 Sq.m. / 420 Sq.ft.
Master Bedroom	18.1 Sq.m. / 195 Sq.ft.
Bedroom 2	16.7 Sq.m. / 180 Sq.ft.
Bedroom 3	10.0 Sq.m. / 108 Sq.ft.
Bedroom 4	11.0 Sq.m. / 118 Sq.ft.
Open Terrace	80.0 Sq.m. / 861 Sq.ft.
Roof Terrace	73.0 Sq.m. / 786 Sq.ft.
Strata Void	40.0 Sq.m. / 431 Sq.ft.



Note

1. Areas include PES, AC ledges, bay windows, planters, open terraces and roof terrace (where applicable).
2. All plans are not to scale and subject to change as may be approved by the relevant authorities.
3. All floor areas are approximate only and subject to survey



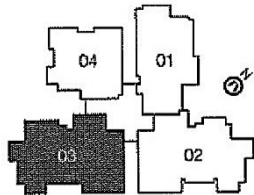
Level 1

TYPE B3

156 Sq.m. / 1679 Sq.ft.

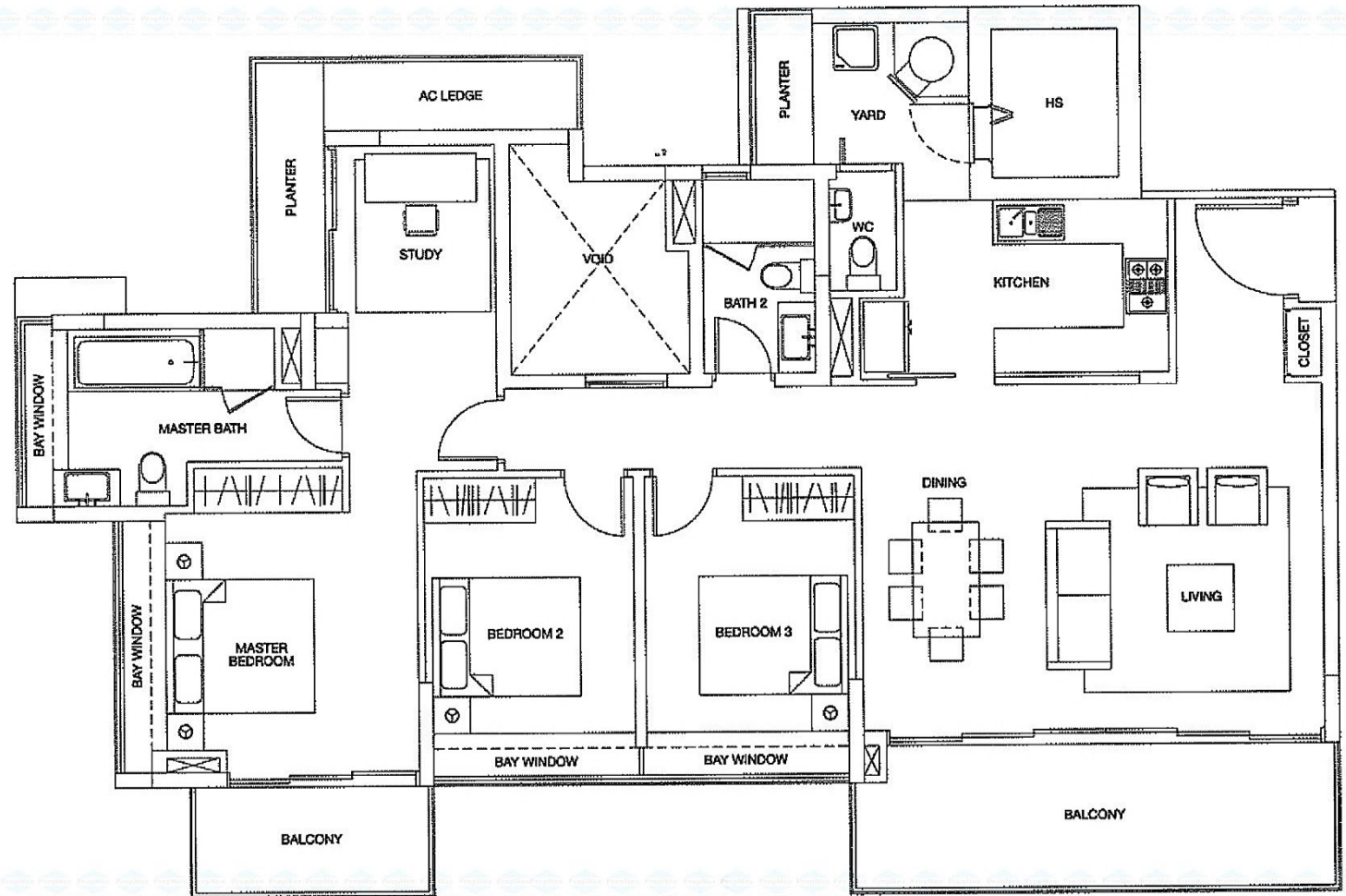
#02-03 to #07-03

Living / Dining	37.7 Sq.m. / 406 Sq.ft.
Master Bedroom (incl. Study)	25.2 Sq.m. / 271 Sq.ft.
Bedroom 2	11.6 Sq.m. / 125 Sq.ft.
Bedroom 3	11.6 Sq.m. / 125 Sq.ft.



Note:

1. Areas include PES, AC ledges, bay windows and planters (where applicable).
2. All plans are not to scale and subject to change as may be approved by the relevant authorities.
3. All floor areas are approximate only and subject to survey.

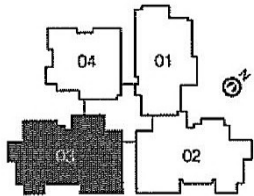


TYPE B4

193 Sq.m. / 2077 Sq.ft.

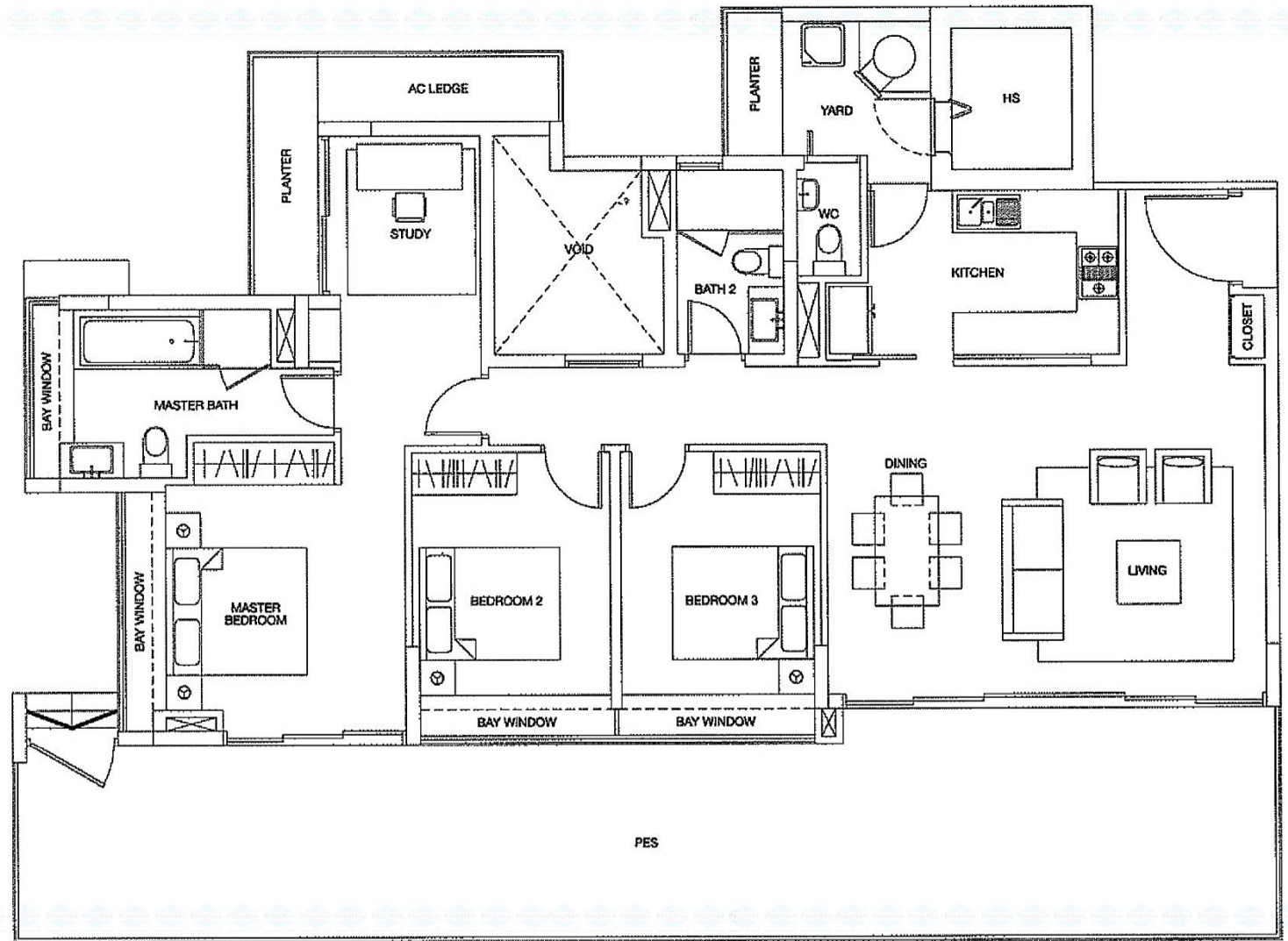
#01-03

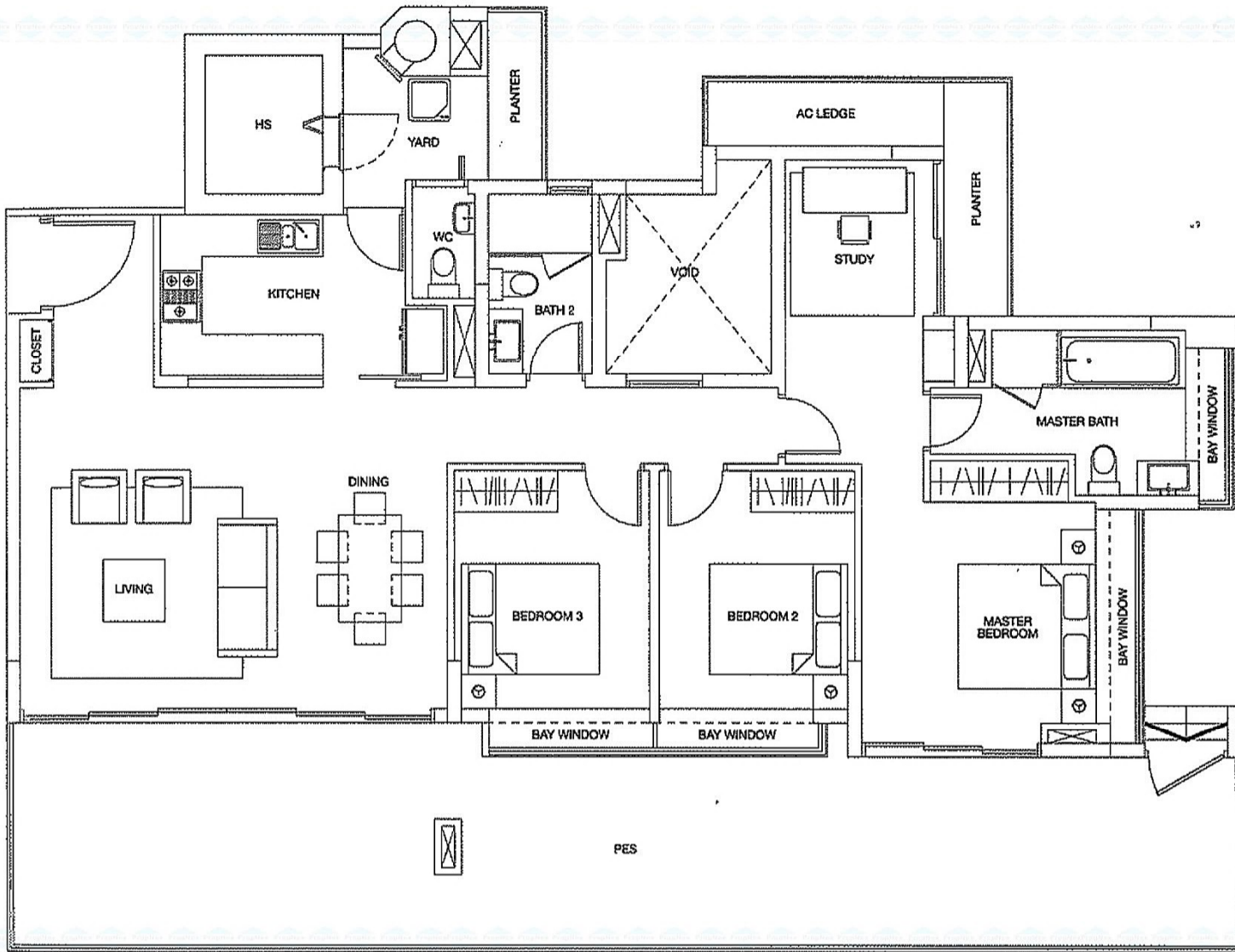
Living / Dining	37.7 Sq.m. / 406 Sq.ft.
Master Bedroom (incl. Study)	25.2 Sq.m. / 271 Sq.ft.
Bedroom 2	11.6 Sq.m. / 125 Sq.ft.
Bedroom 3	11.6 Sq.m. / 125 Sq.ft.



Note:

1. Areas include PES, AC ledges, bay windows and planters (where applicable)
2. All plans are not to scale and subject to change as may be approved by the relevant authorities
3. All floor areas are approximate only and subject to survey



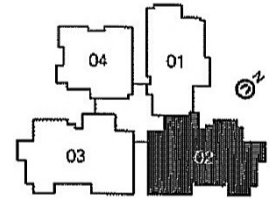


TYPE B5

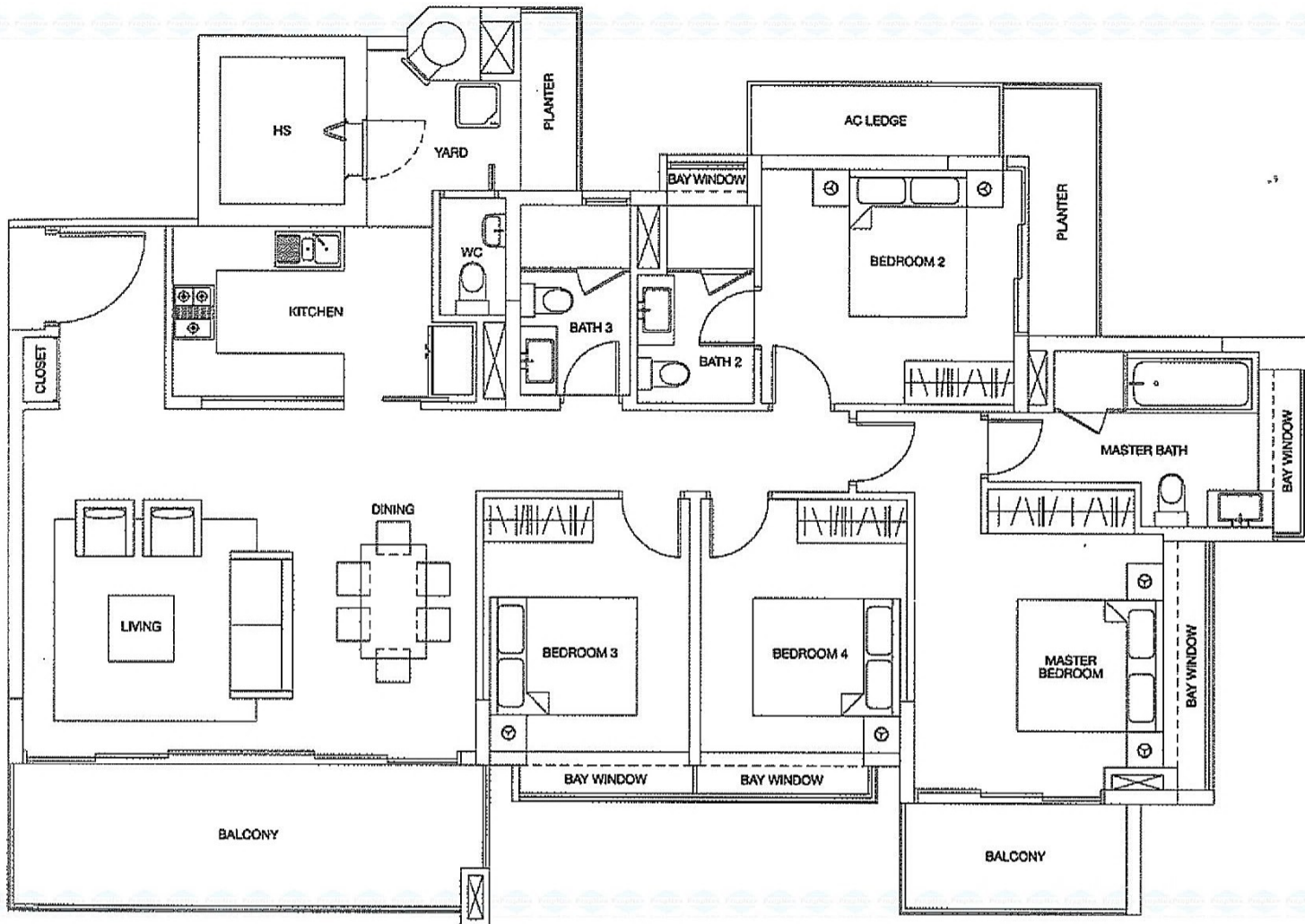
193 Sq.m. / 2077 Sq.ft.

#01-02

Living / Dining	37.7 Sq.m. / 406 Sq.ft.
Master Bedroom (incl. Study)	25.2 Sq.m. / 271 Sq.ft.
Bedroom 2	11.3 Sq.m. / 122 Sq.ft.
Bedroom 3	11.3 Sq.m. / 122 Sq.ft.

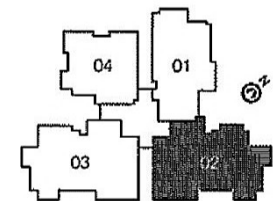


- Note
- 1 Areas include PES, AC ledges, bay windows and planters (where applicable)
 - 2 All plans are not to scale and subject to change as may be approved by the relevant authorities
 - 3 All floor areas are approximate only and subject to survey



TYPE C1
 166 Sq.m. / 1787 Sq.ft.
 #08-02 to #16-02

Living / Dining	37.7 Sq.m. / 406 Sq.ft.
Master Bedroom	17.6 Sq.m. / 189 Sq.ft.
Bedroom 2	11.3 Sq.m. / 122 Sq.ft.
Bedroom 3	11.3 Sq.m. / 122 Sq.ft.
Bedroom 4	11.3 Sq.m. / 122 Sq.ft.



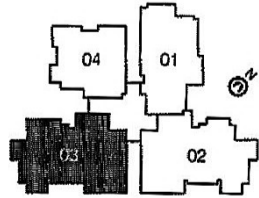
- Note:
1. Areas include PES, AC ledges, bay windows and planters (where applicable)
 2. All plans are not to scale and subject to change as may be approved by the relevant authorities.
 3. All floor areas are approximate only and subject to survey

TYPE C2

166 Sq.m. / 1787 Sq.ft.

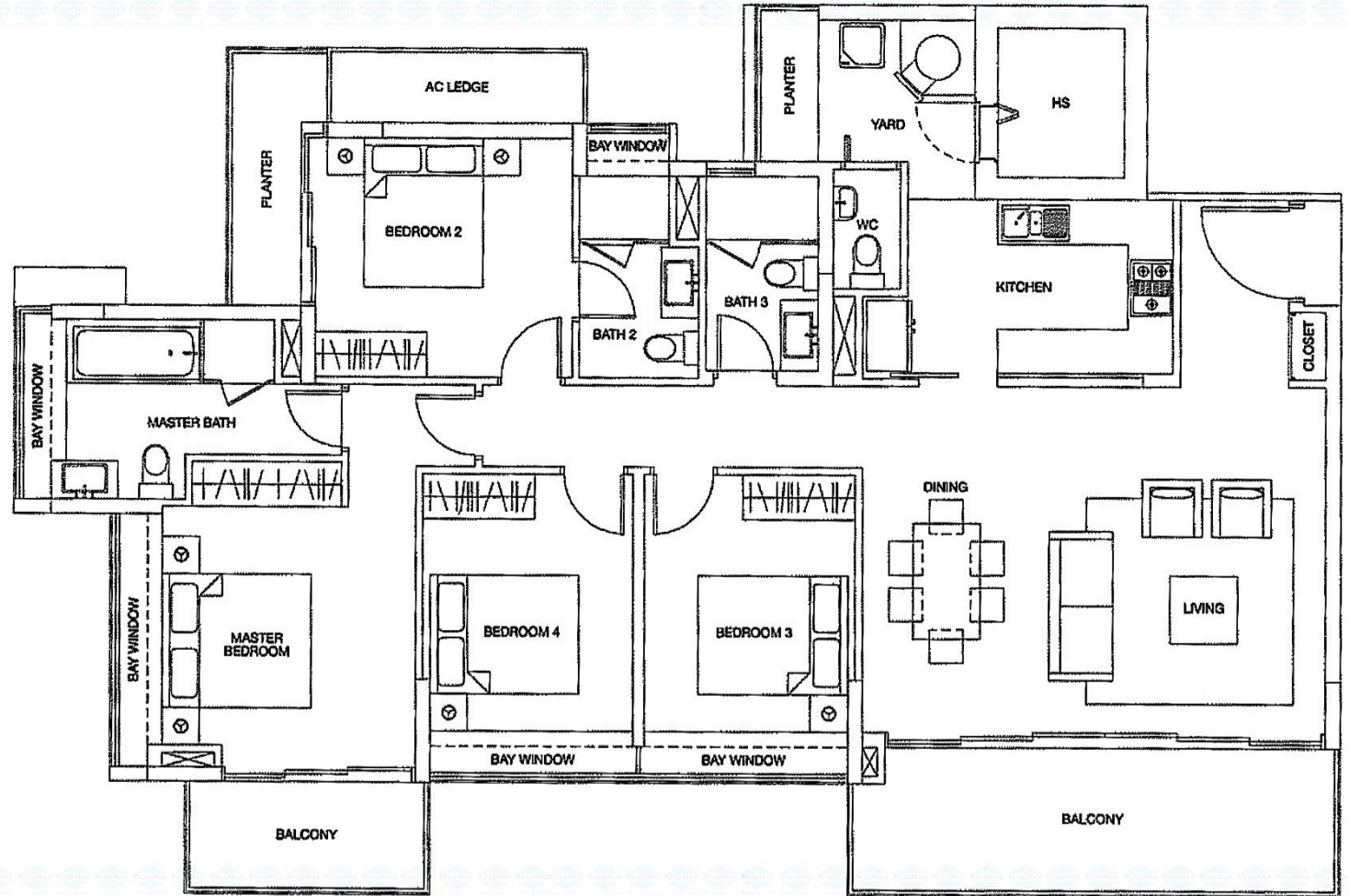
#08-03 to #16-03

Living / Dining	37.7 Sq.m. / 406 Sq.ft.
Master Bedroom	17.6 Sq.m. / 189 Sq.ft.
Bedroom 2	11.6 Sq.m. / 125 Sq.ft.
Bedroom 3	11.6 Sq.m. / 125 Sq.ft.
Bedroom 4	11.3 Sq.m. / 122 Sq.ft.



Note

1. Areas include PES, AC ledges, bay windows and planters (where applicable)
2. All plans are not to scale and subject to change as may be approved by the relevant authorities.
3. All floor areas are approximate only and subject to survey

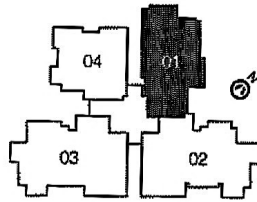


TYPE B1

129 Sq.m. / 1389 Sq.ft.

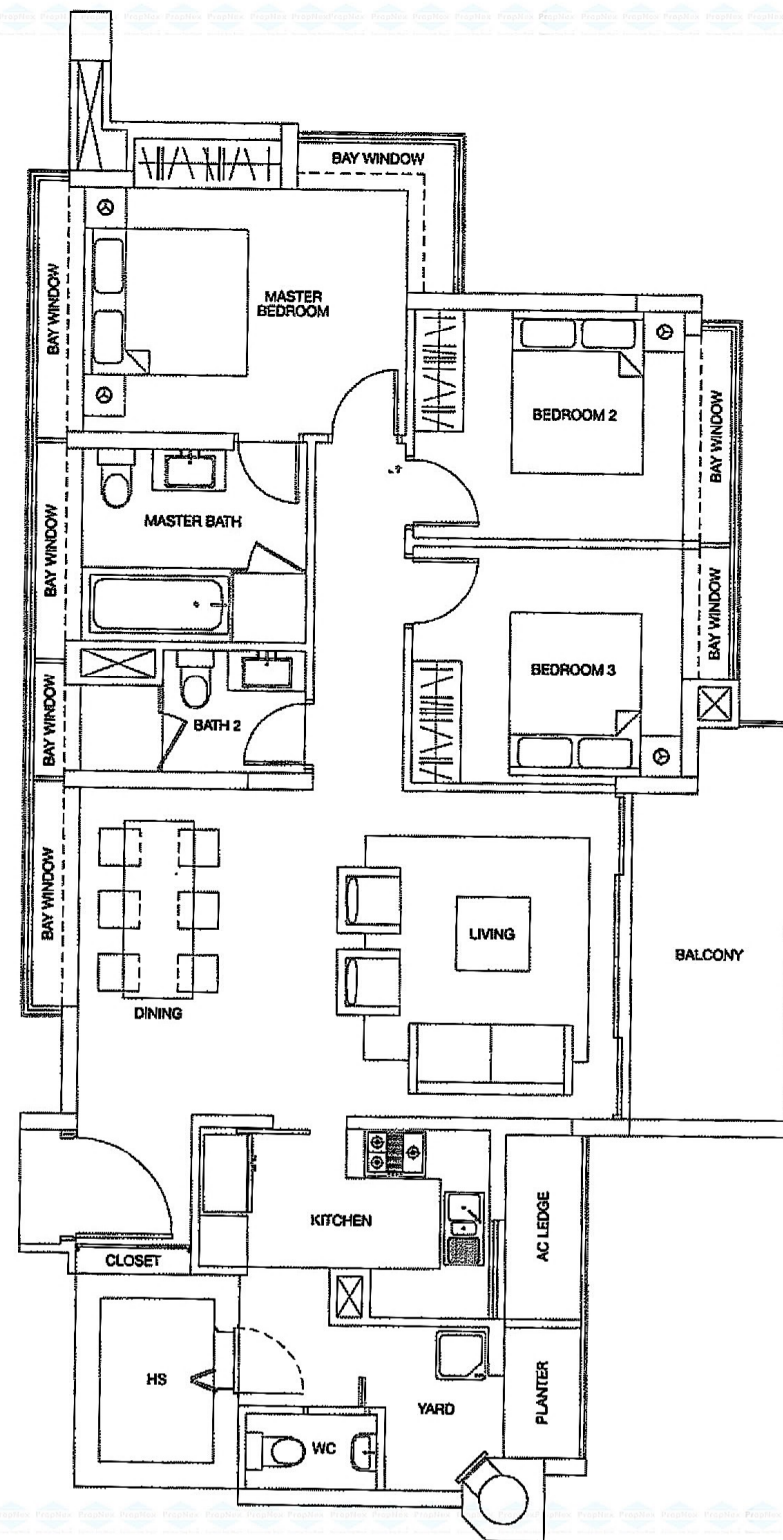
#05-01 to #11-01

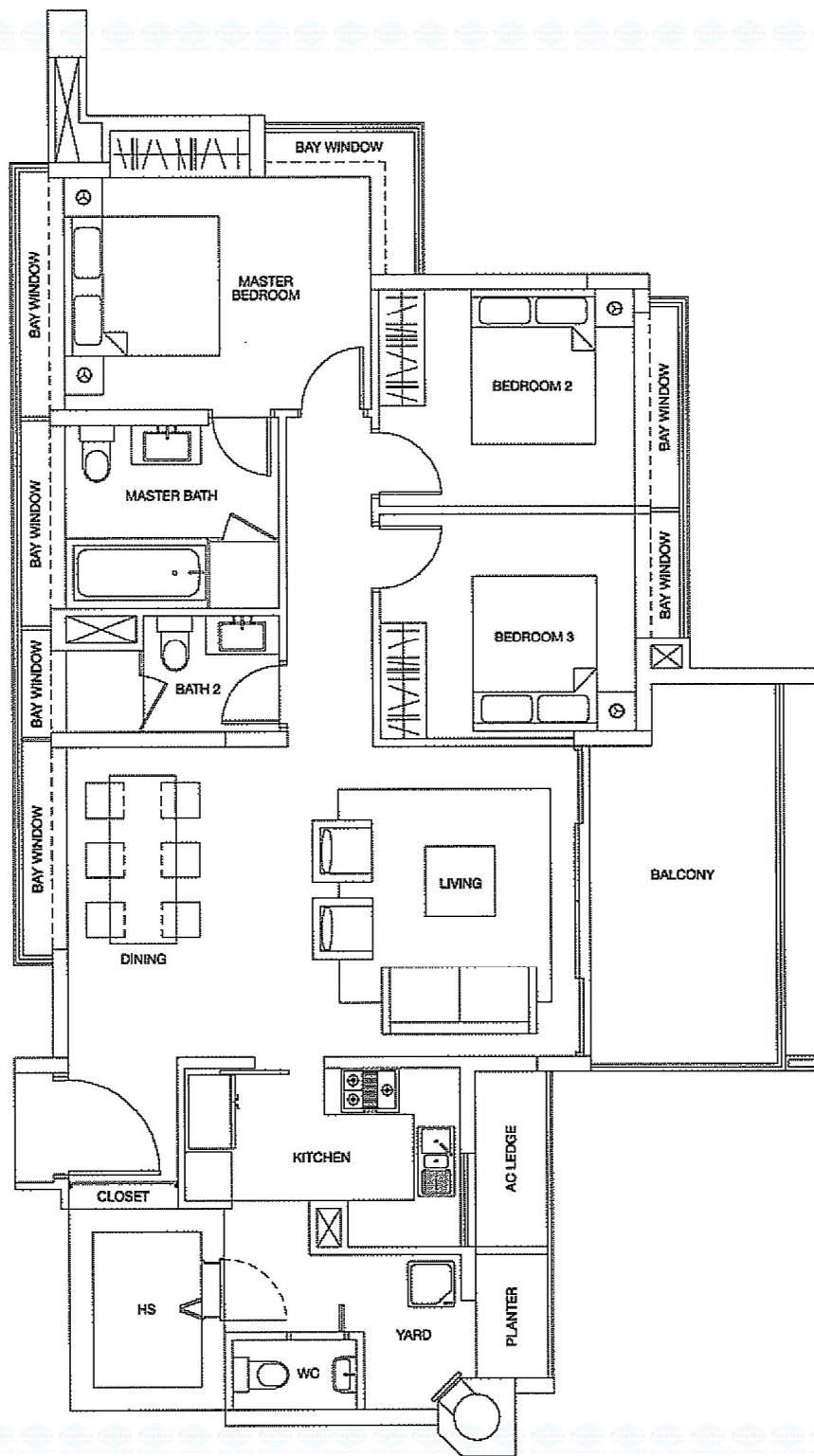
Living / Dining	34.7 Sq.m. / 374 Sq.ft.
Master Bedroom	17.5 Sq.m. / 188 Sq.ft.
Bedroom 2	11.1 Sq.m. / 119 Sq.ft.
Bedroom 3	10.6 Sq.m. / 114 Sq.ft.



Note

1. Areas include PES, AC ledges, bay windows and planters (where applicable)
2. All plans are not to scale and subject to change as may be approved by the relevant authorities
3. All floor areas are approximate only and subject to survey



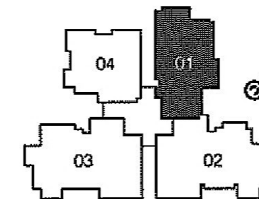


TYPE B1a

131 Sq.m. / 1410 Sq.ft.

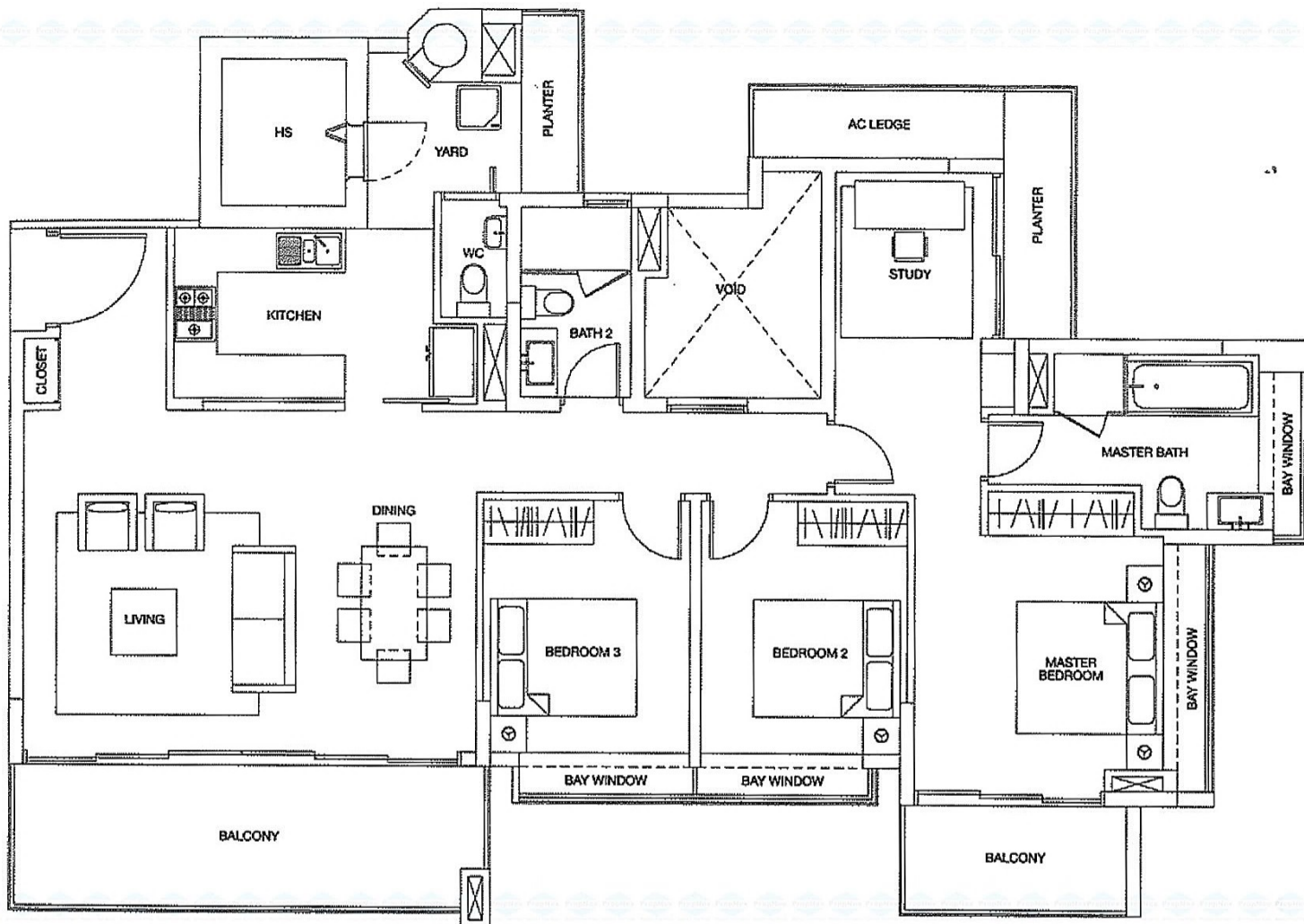
#12-01 to #17-01

Living / Dining	34.7 Sq.m. / 374 Sq.ft.
Master Bedroom	17.5 Sq.m. / 188 Sq.ft.
Bedroom 2	11.1 Sq.m. / 119 Sq.ft.
Bedroom 3	10.6 Sq.m. / 114 Sq.ft.



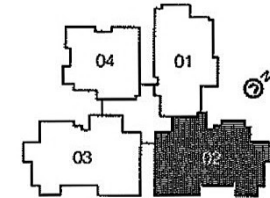
Note

1. Areas include PES, AC ledges, bay windows and planters (where applicable)
2. All plans are not to scale and subject to change as may be approved by the relevant authorities.
3. All floor areas are approximate only and subject to survey



TYPE B2
 156 Sq.m. / 1679 Sq.ft.
 #02-02 to #07-02

Living / Dining	37.7 Sq.m. / 406 Sq.ft.
Master Bedroom (incl. Study)	25.2 Sq.m. / 271 Sq.ft.
Bedroom 2	11.3 Sq.m. / 122 Sq.ft.
Bedroom 3	11.3 Sq.m. / 122 Sq.ft.



- Note
1. Areas include PES, AC ledges, bay windows and planters (where applicable)
 2. All plans are not to scale and subject to change as may be approved by the relevant authorities.
 3. All floor areas are approximate only and subject to survey