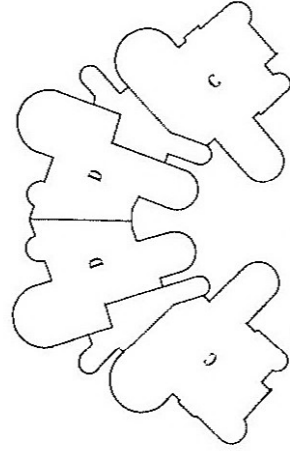
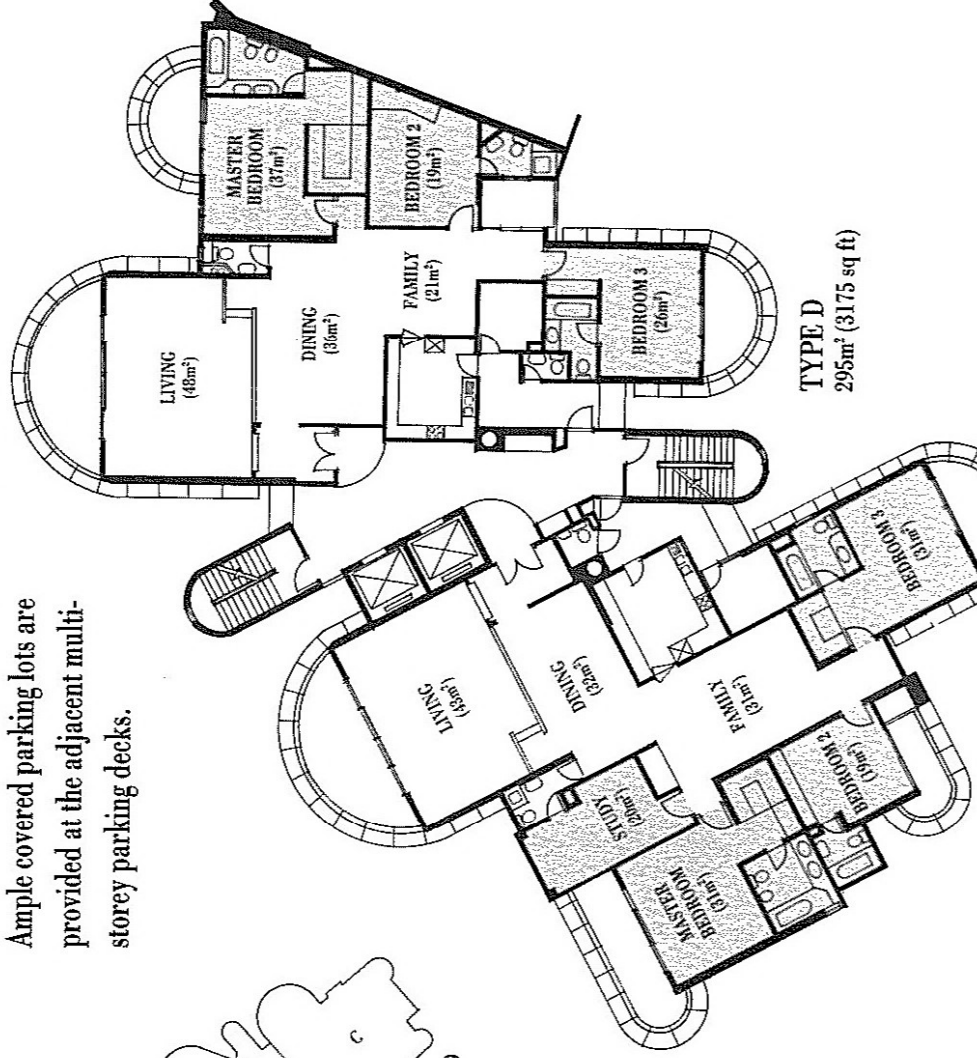


TOWER BLOCK - THE PEAK OF DISTINCTION

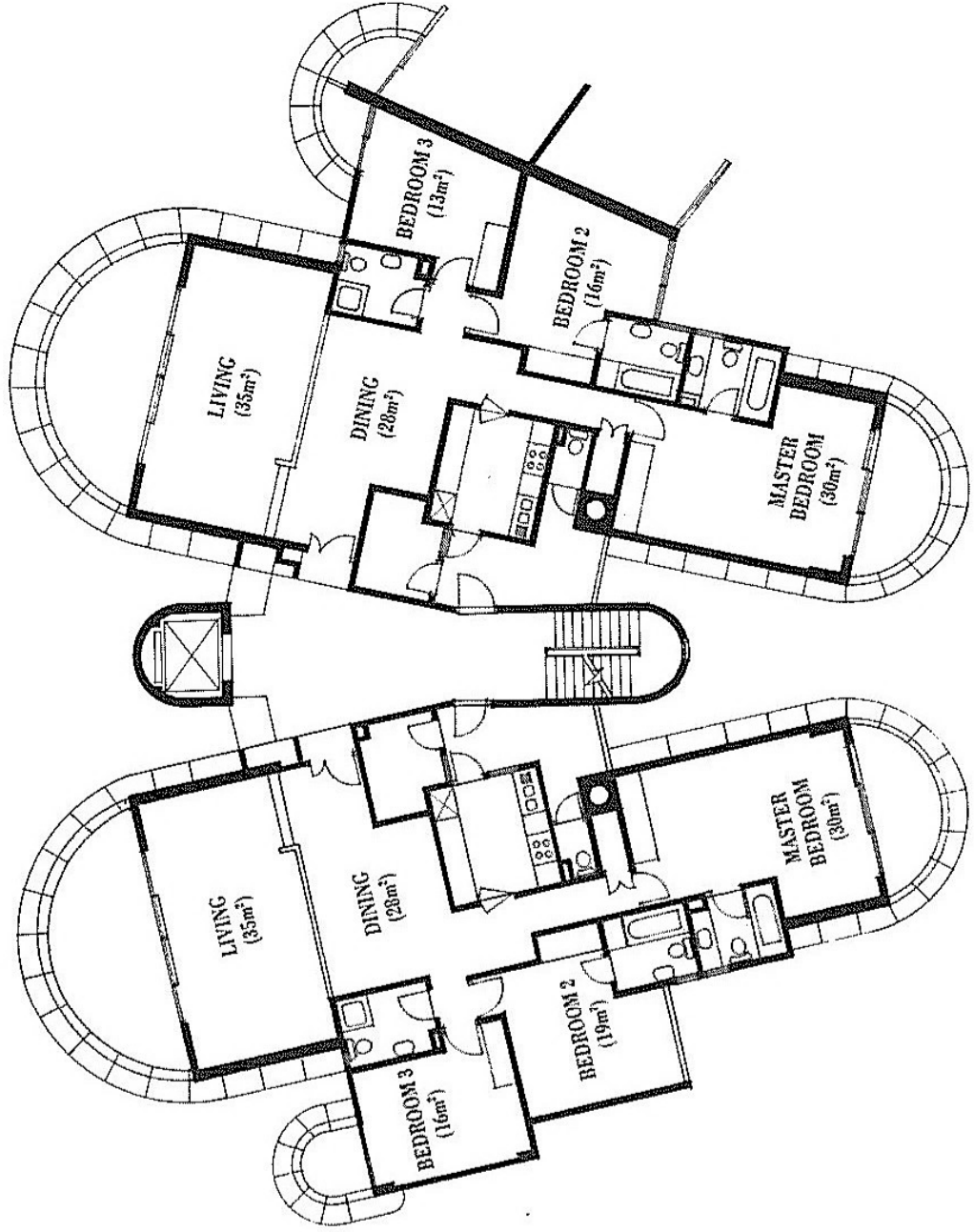
From the outside, the Regency Park's twin 25-storey tower blocks command picturesque majesty. Inside its apartment, good taste prevails. A wide panoramic view of the quiet neighbourhood can be enjoyed from the master bedroom and all living areas. The split-level dining and living rooms allow vast potential for creative interior designs. The spacious kitchen with built-in cabinets is well-equipped with modern appliances. There's even a separate entrance for tradesmen. Ample covered parking lots are provided at the adjacent multi-storey parking decks.



25-storey — Tower Block 9



TYPE D
295m² (3175 sq ft)



TYPE A
210m² (2260 sq ft)

TYPE B
209m² (2250 sq ft)

LOWRISE BLOCKS - FOCUS ON GRACIOUS LIVING

When you emerge from your parked car, there are private lifts to take you to your doorstep. This is but one of the many conveniences offered by the 4-storey low-rise blocks of Regency Park. Its low-rise architectural design blends well with the vicinity's low-lying bungalows. The interiors offer split-level dining and living areas, and privacy is further enhanced by grouping rooms into private and semi private areas.

All units are carefully designed away from the sun's glare, with the balcony opening to broad vistas of the lush surroundings.

