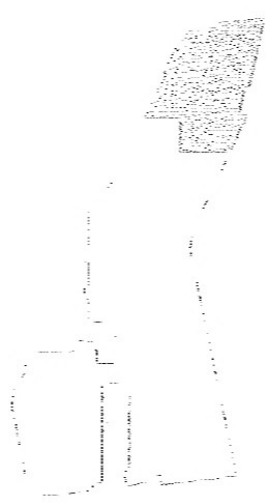
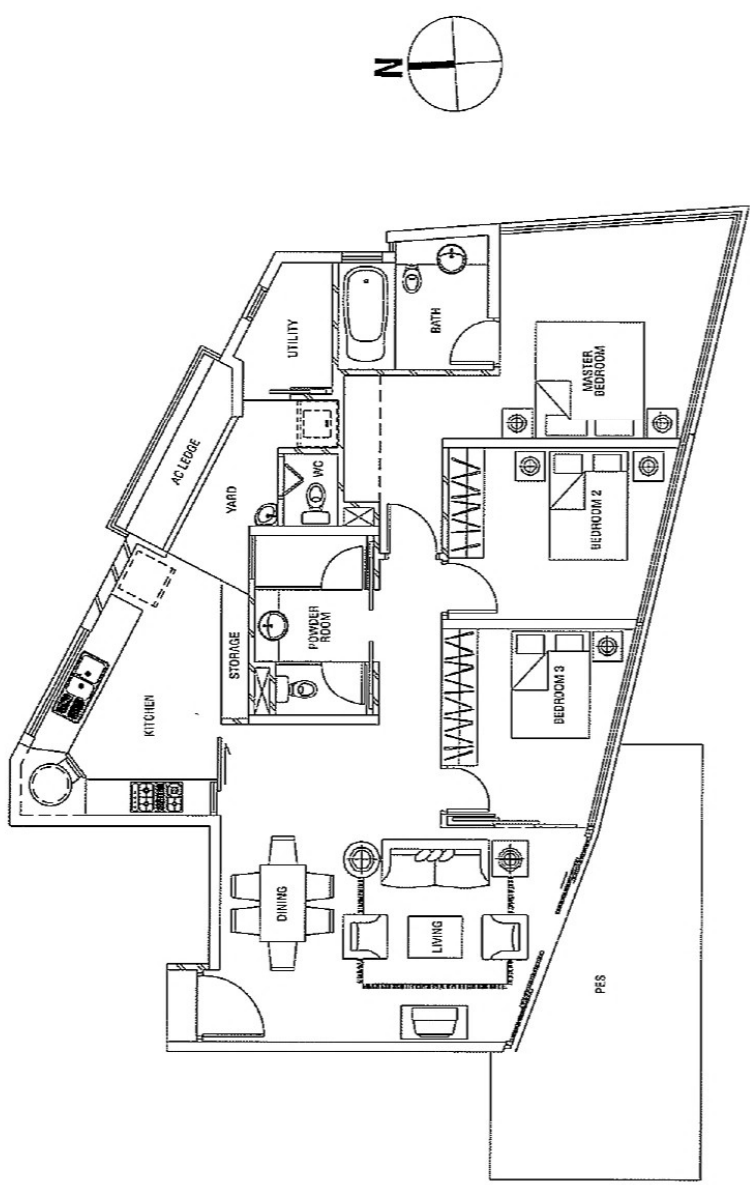


Type E1

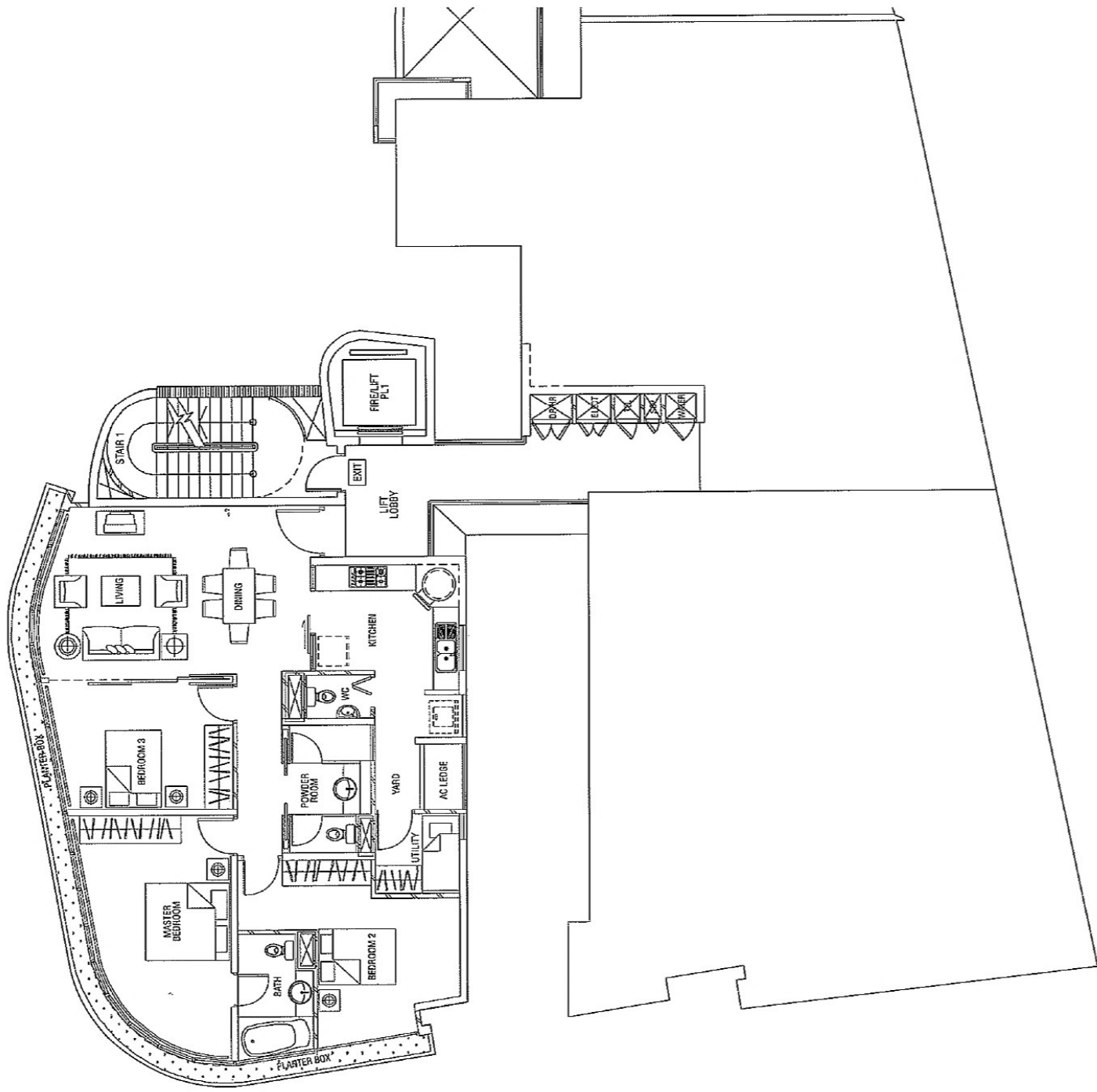
128 sq m / 1378 sq ft. (incl. AC Ledge & PES)

#01-01

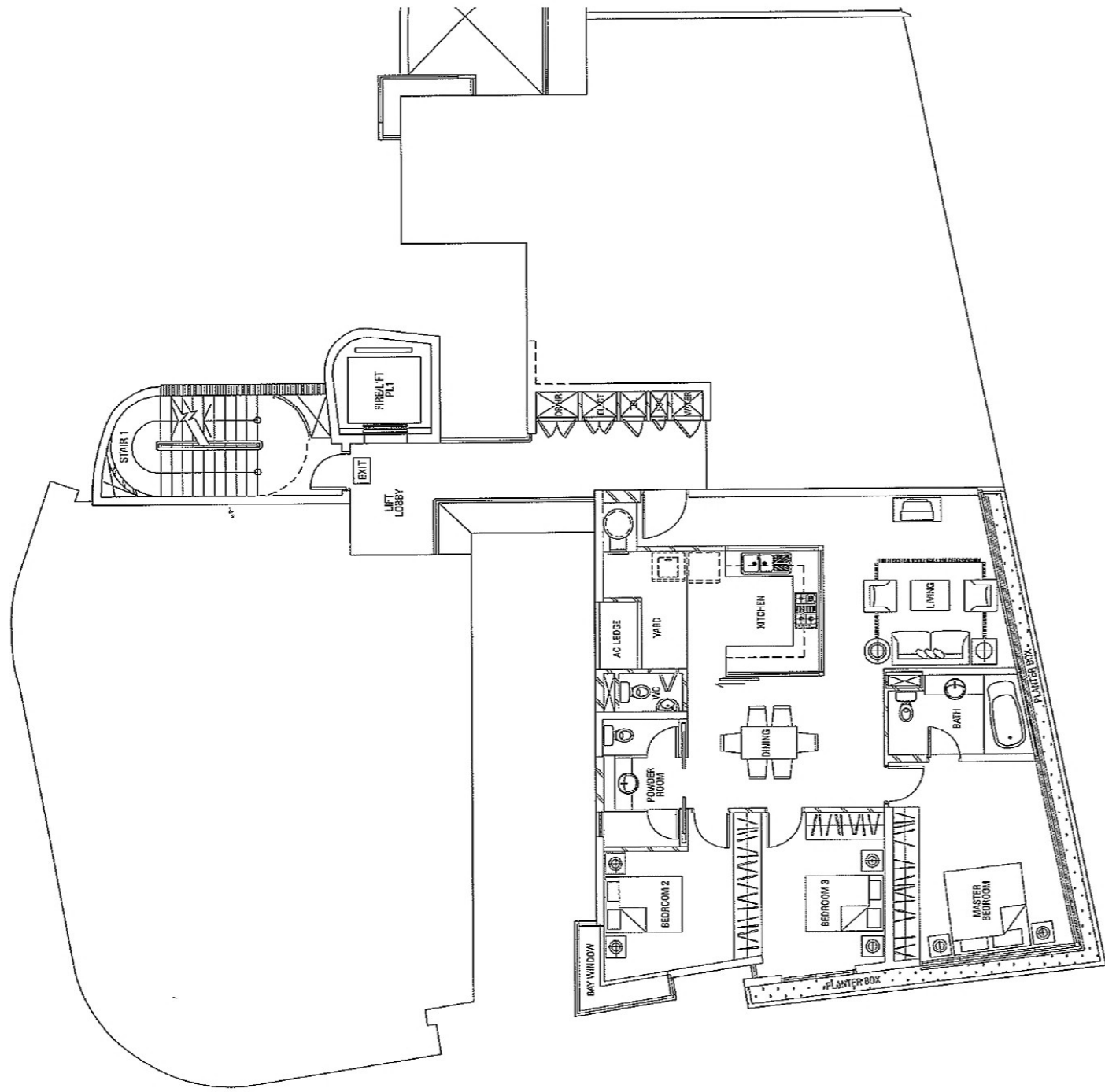
43



The above plan is subject to change as may be approved by the relevant authority. Areas are approximate measurements and subject to final survey.



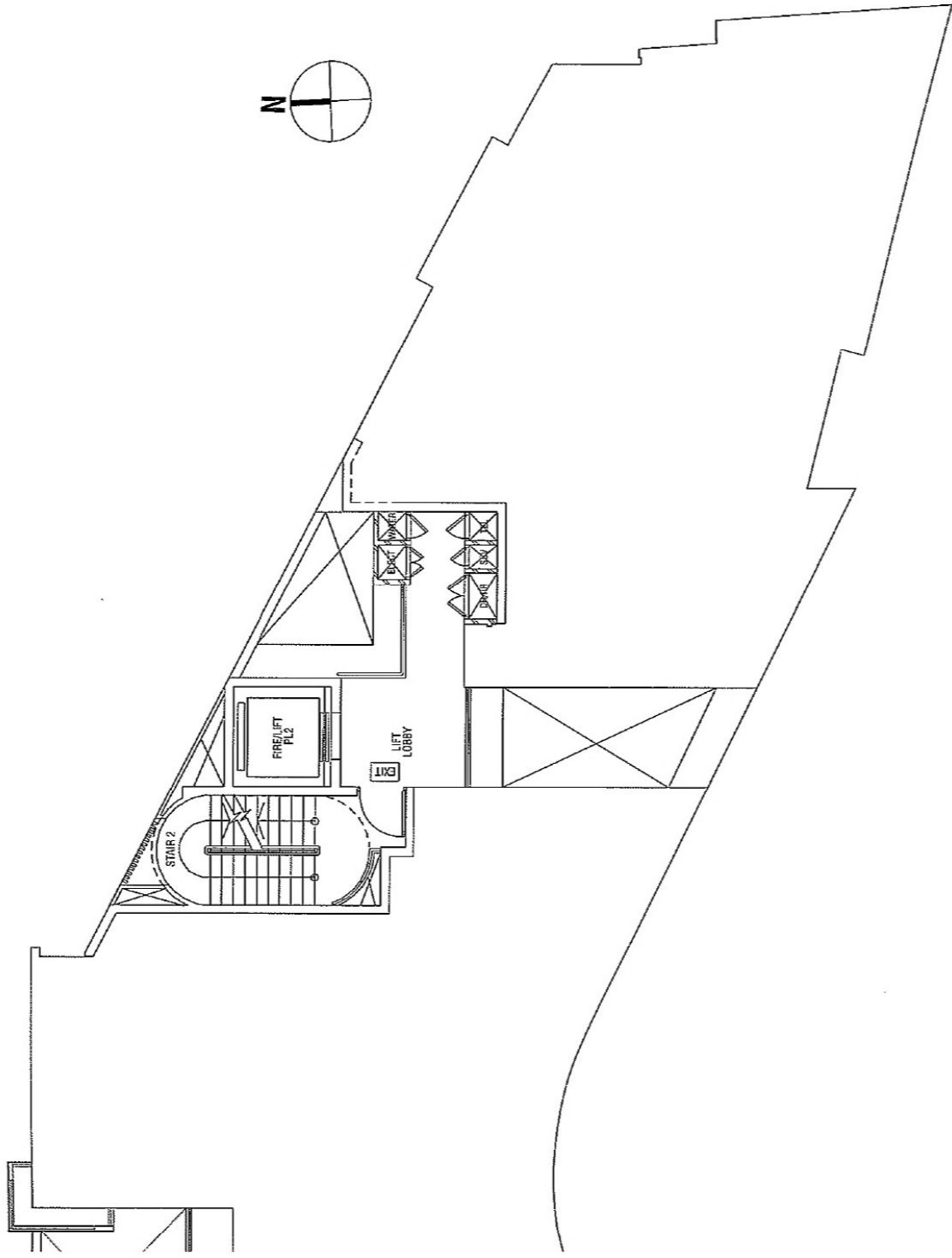
The above plan is subject to change as maybe approved by the relevant authority. Areas are approximate measurements and subject to final survey.

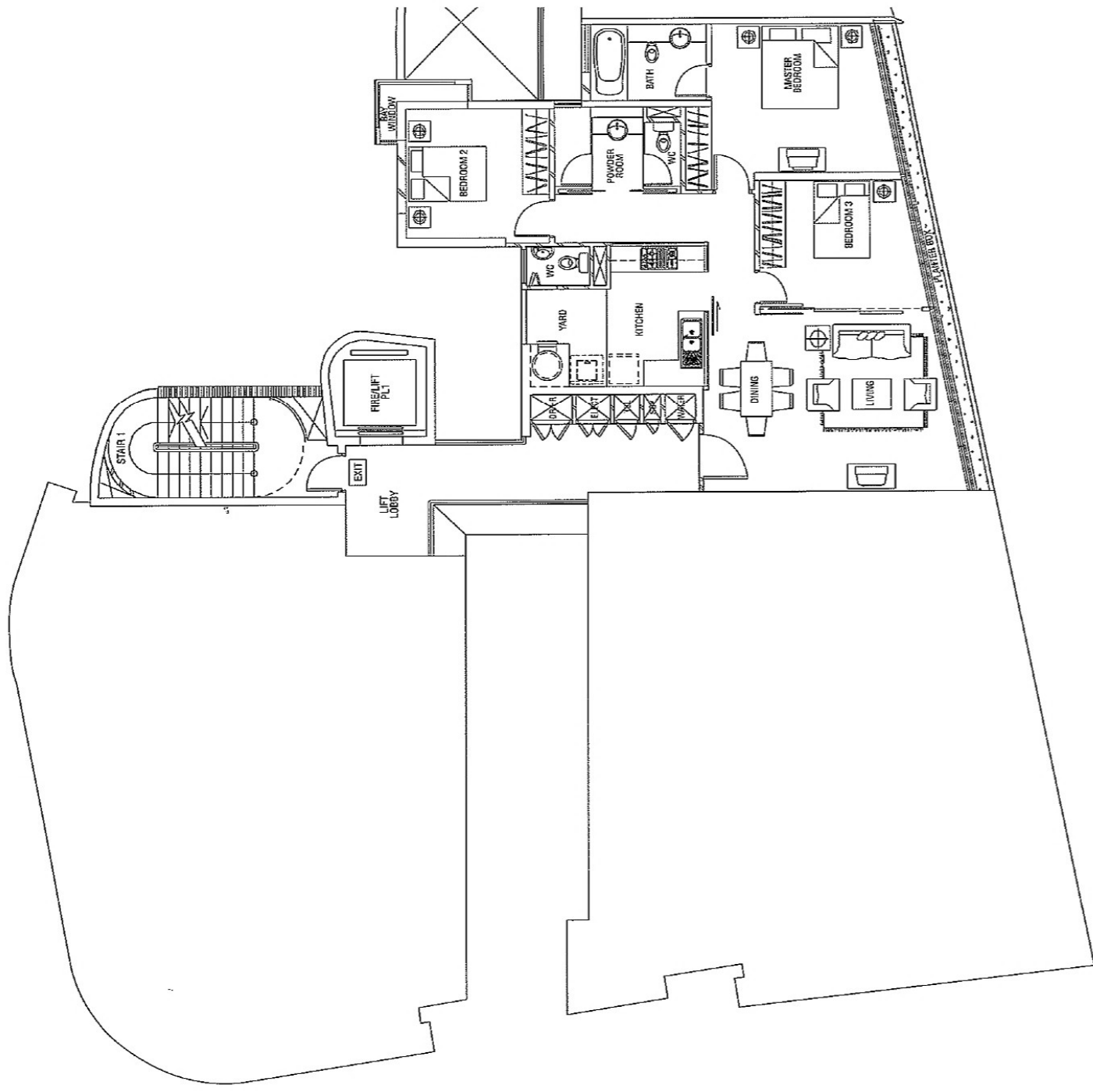


The above plan is subject to change as maybe approved by the relevant authority. Areas are approximate measurements and subject to final survey.

Type B
122 sq m / 1313 sq ft (incl AVC Ledge & Planter)

#02-04 - #10-04



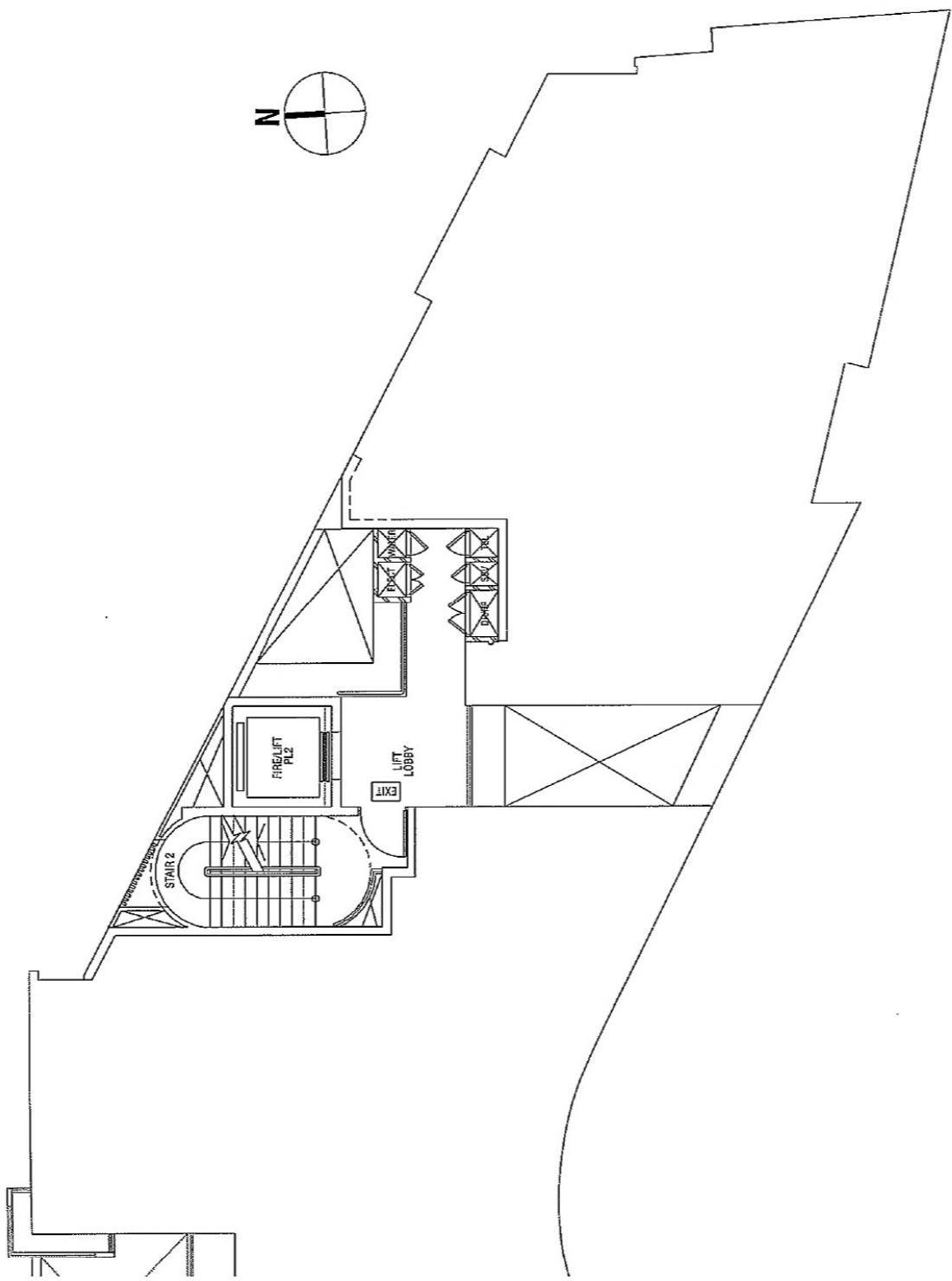


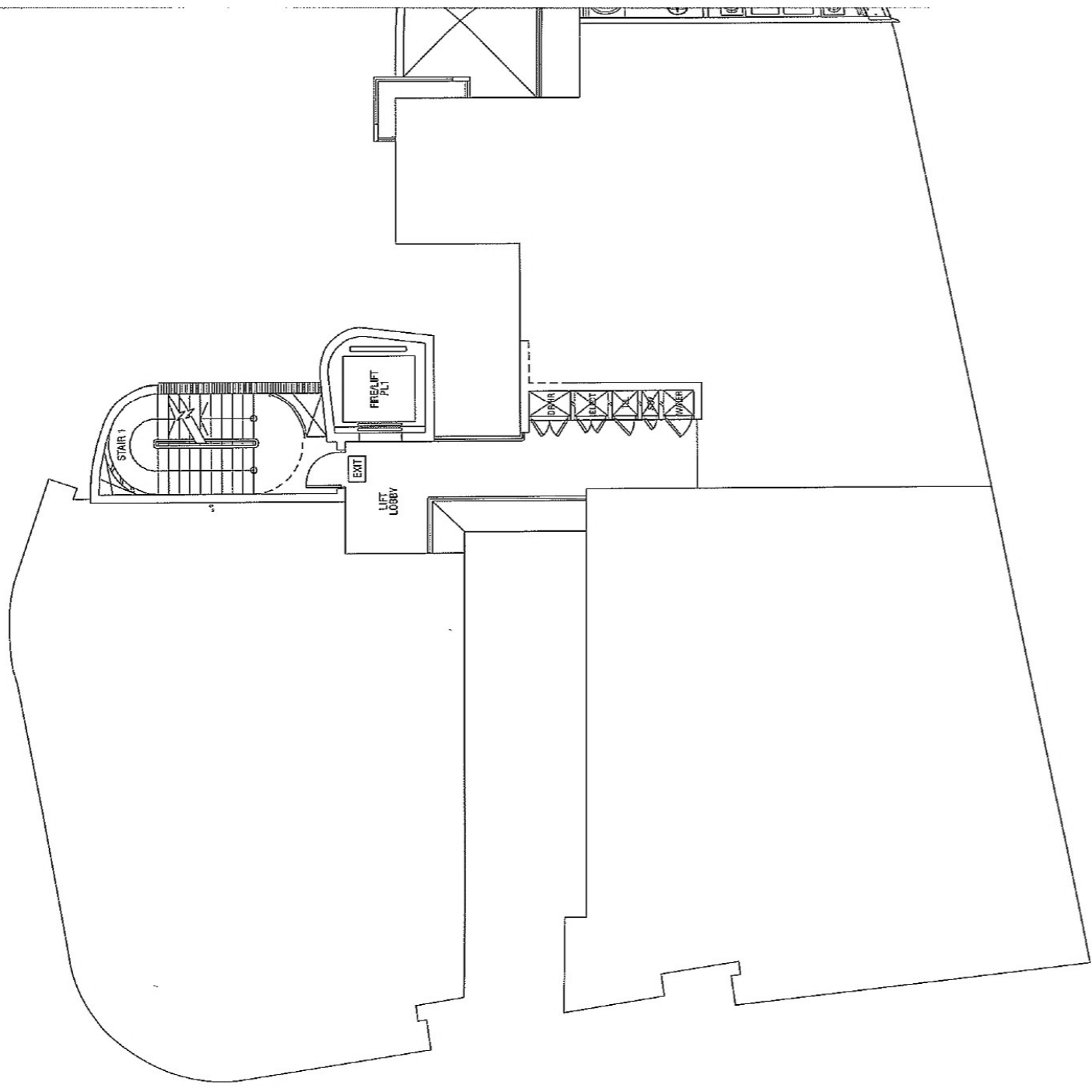
The above plan is subject to change as may be approved by the relevant authority. Areas are approximate measurements and subject to final survey.

Type C

108 sq m / 1163 sq ft (incl A/C Ledge & Planter)

#02-03 - #10-03





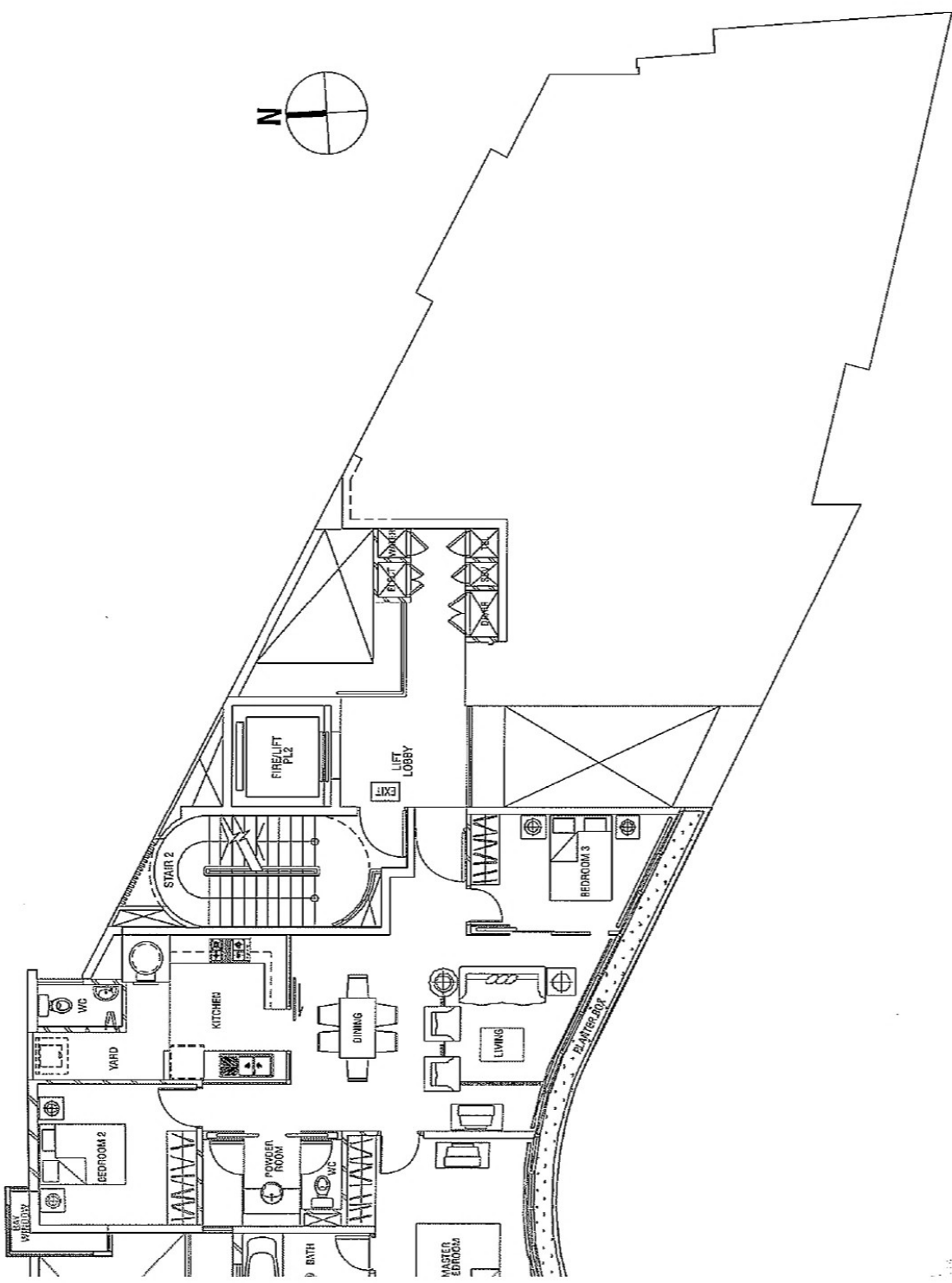
The above plan is subject to change as maybe approved by the relevant authority. Areas are approximate measurements and subject to final survey.

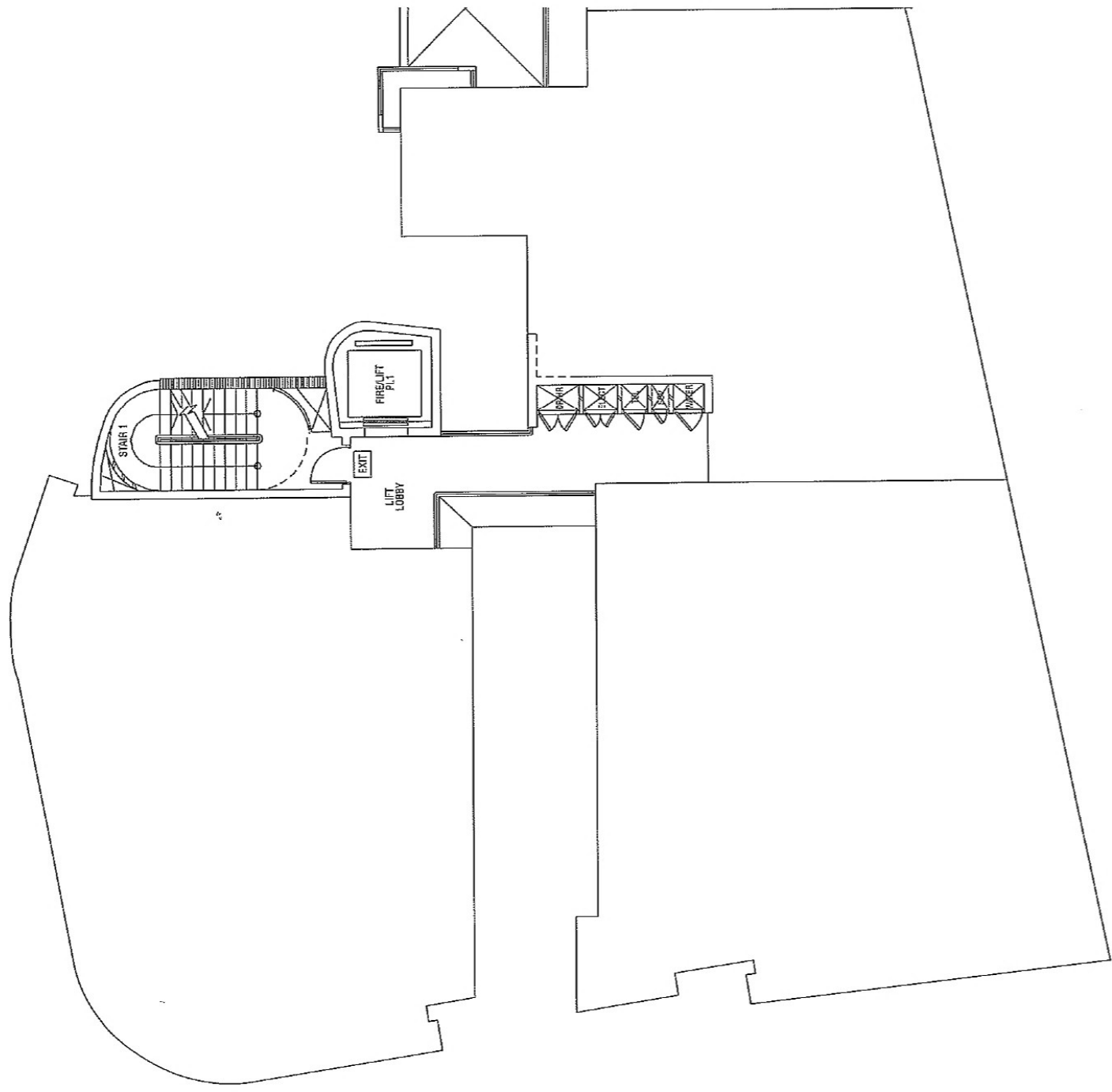
Type D

104 sq m / 1119 sq ft (incl A/C Legce & Planter)

#02-02 - #10-02

5



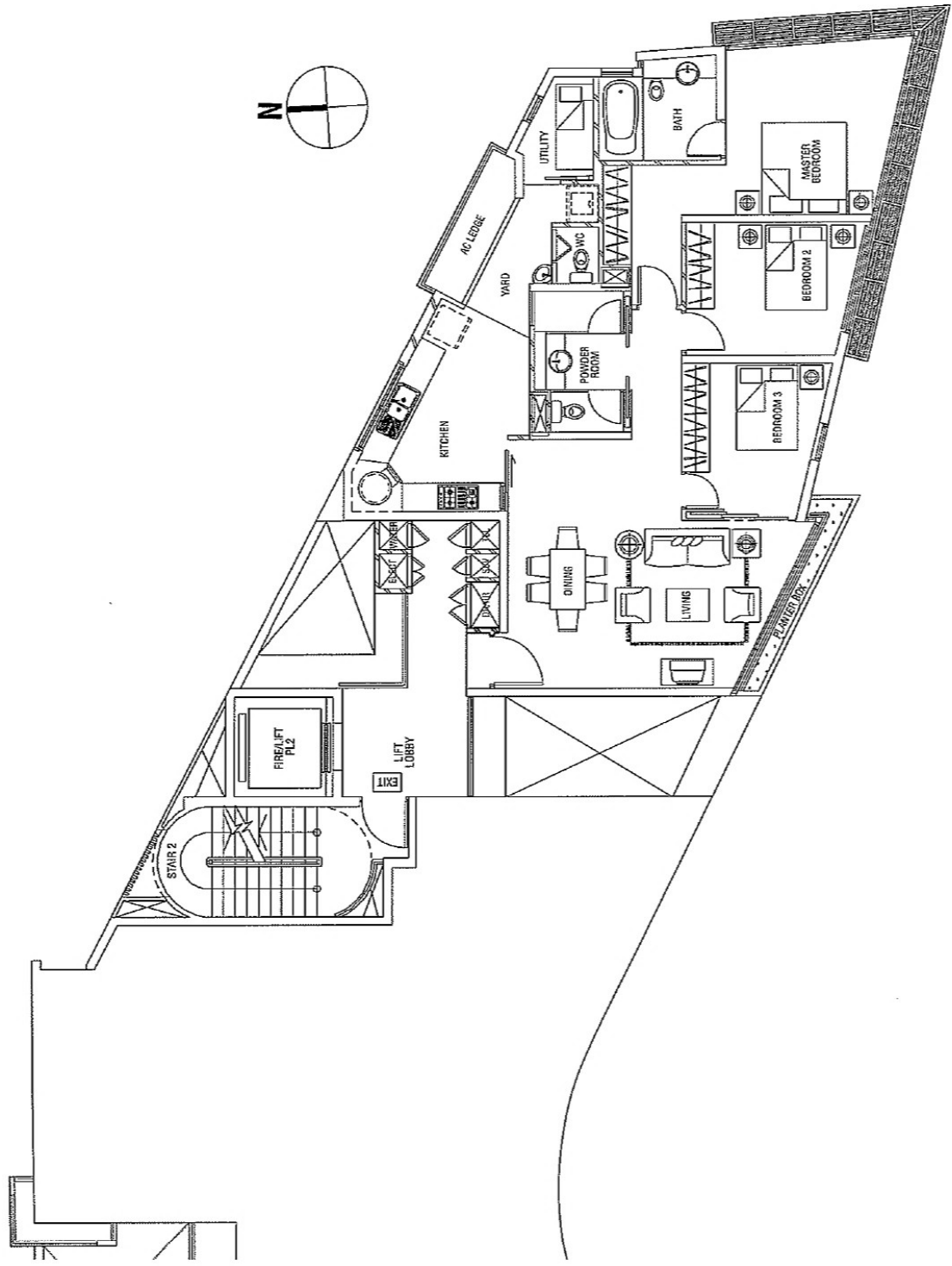


The above plan is subject to change as maybe approved by the relevant authority. Areas are approximate measurements and subject to final survey.

Type E

112 sq m / 1206 sq ft (incl A/C Ledges & Planter)

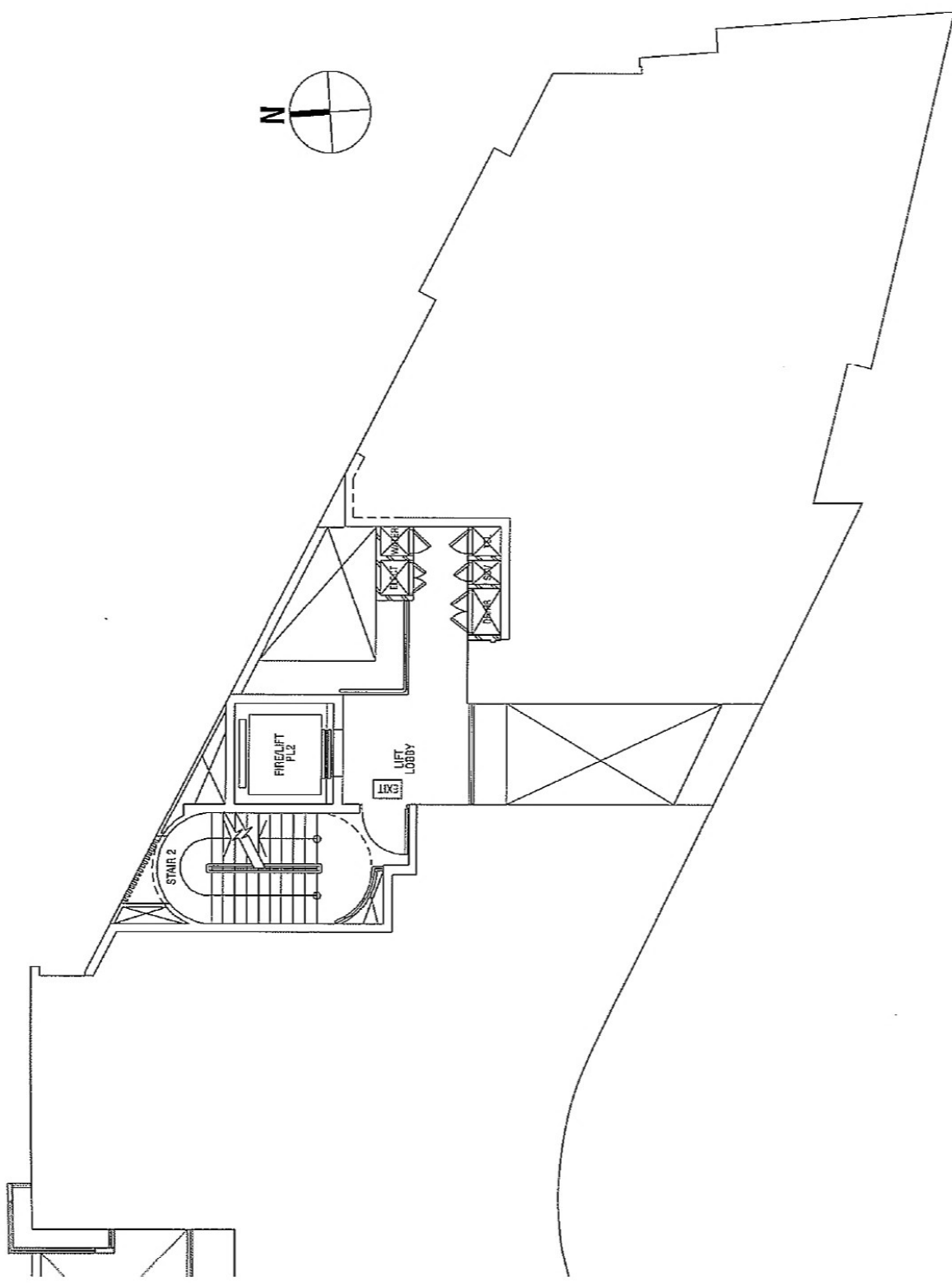
#02-01 - #10-01



Type A

122 sq m / 1313 sq ft (incl AVC Leidge & Planter)

#02-05 -- #10-05



- 1 swimming pool
- 2 children's play pool
- 3 barbecue area
- 4 gym/multi-purpose hall
- 5 reflexology path
- 6 children's play area
- 7 water feature
- 8 reflecting pool
- 9 walking path

site plan

