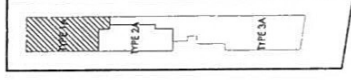
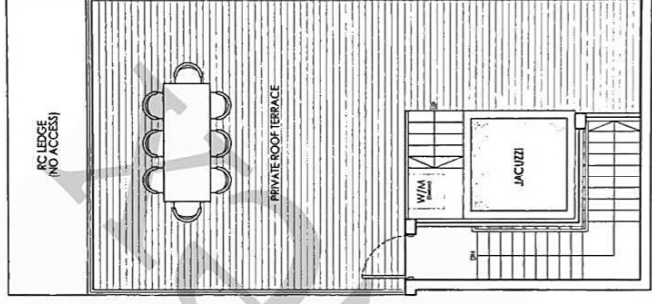
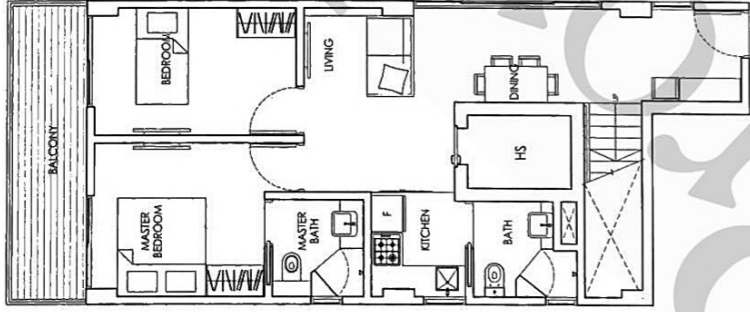


### **Type 1**

- #02-01,
- #03-01,
- #04-01

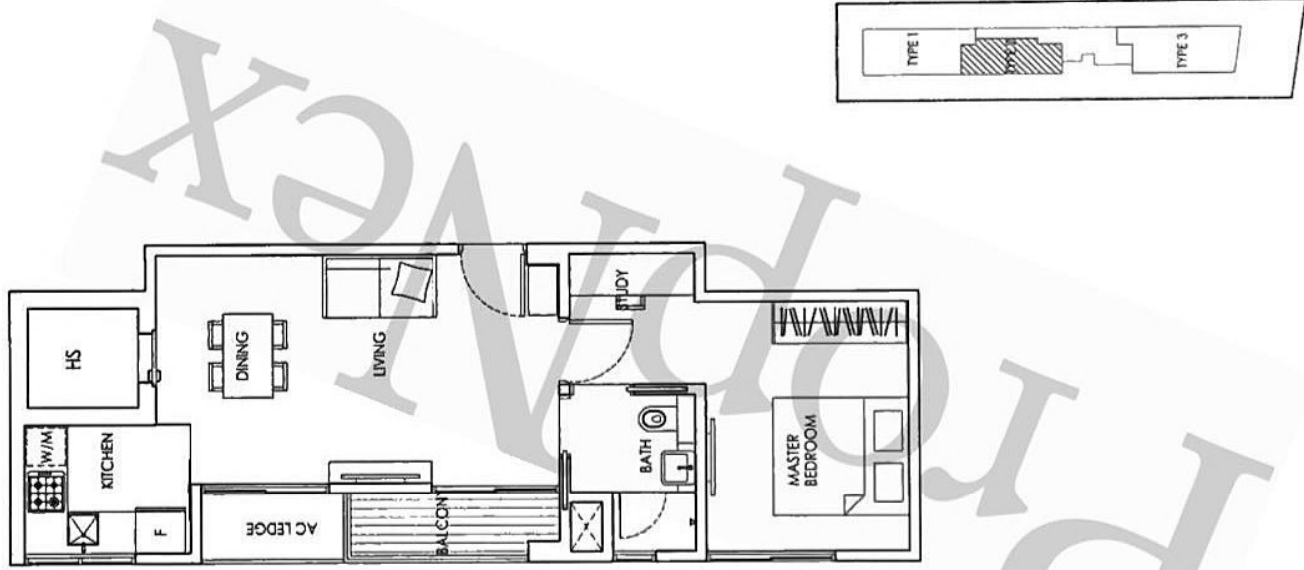
74 square meter



**Type 1A**  
 #05-01  
 146 square meter



\*\* The plans are subject to change as may be required or approved by the relevant authorities.  
 Areas are estimates only and are subject to final survey. Plans are not drawn to scale.



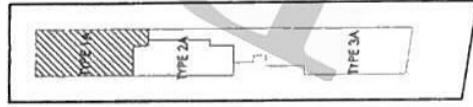
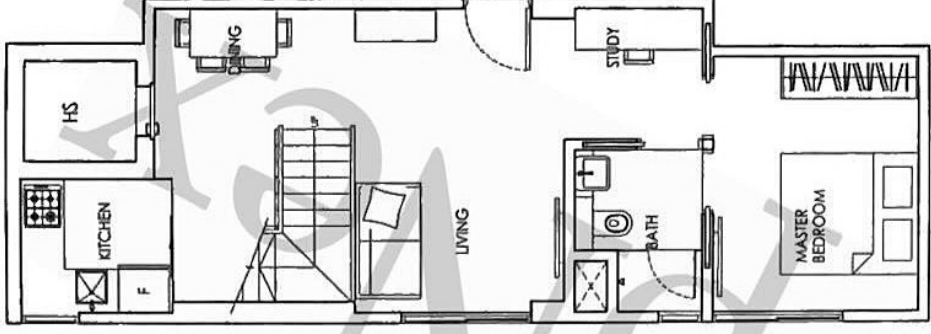
## Type 2

#02-02,

#03-02,

#04-02

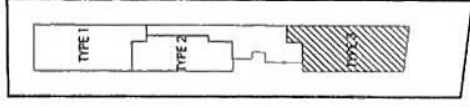
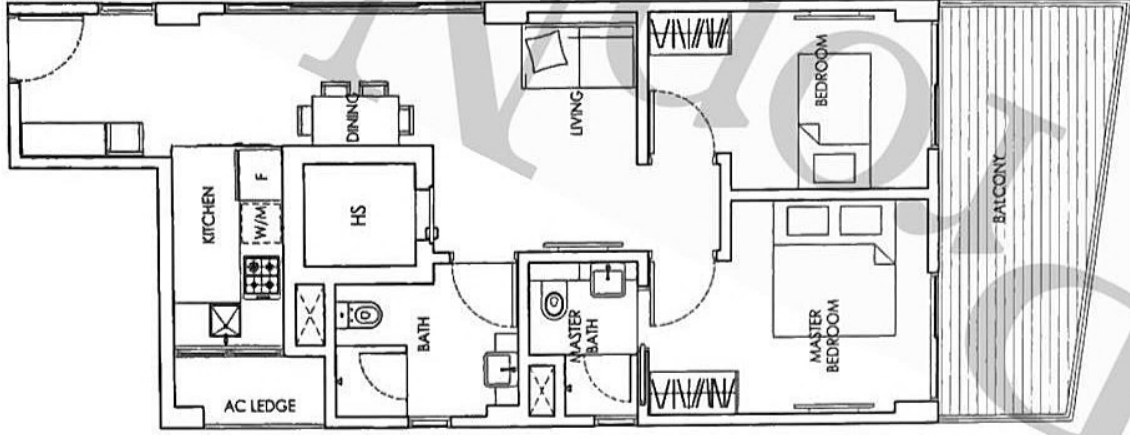
52 square meter



## Type 2A

#05-02

135 square meter



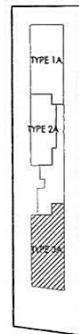
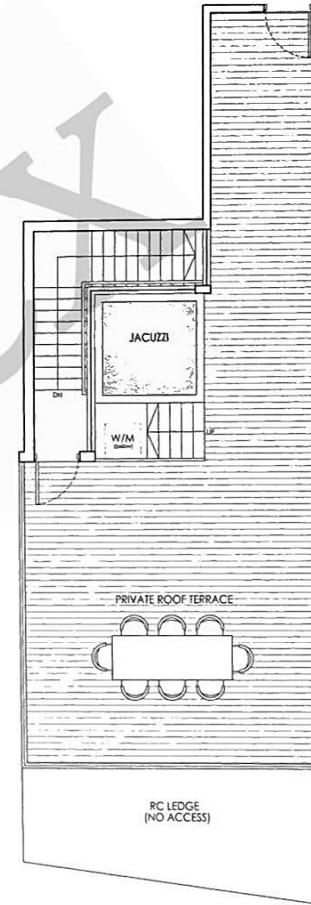
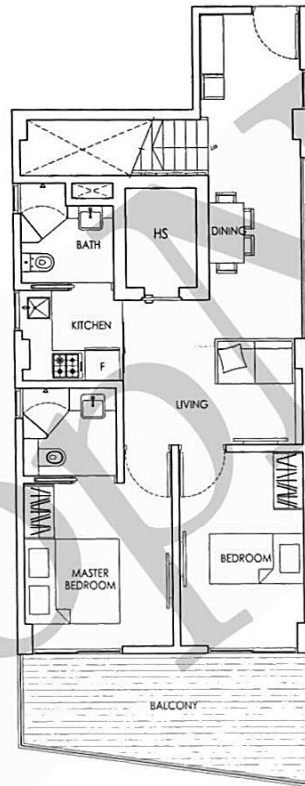
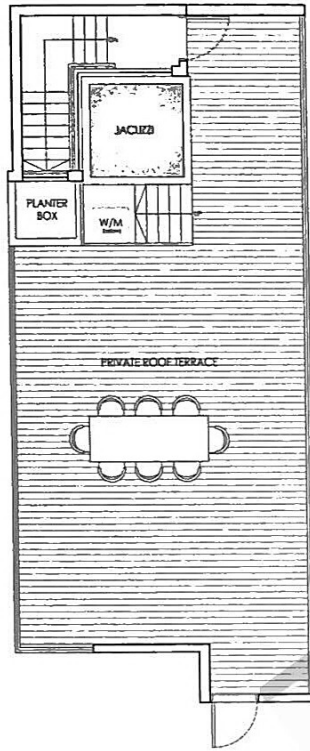
### **Type 3**

#02-03,

#03-03,

#04-03

79 square meter



### Type 3A

#05-03

160 square meter



\*\* The plans are subject to change as may be required or approved by the relevant authorities.  
Areas are estimates only and are subject to final survey. Plans are not drawn to scale.