

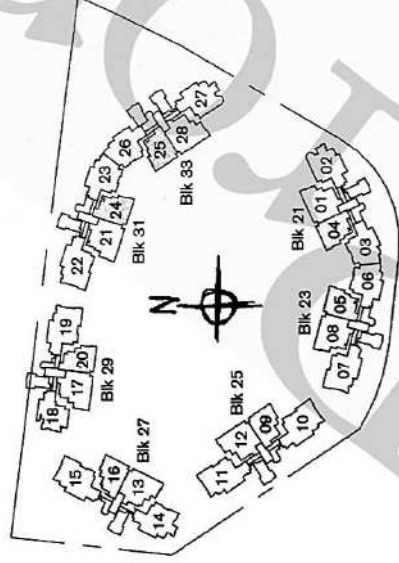
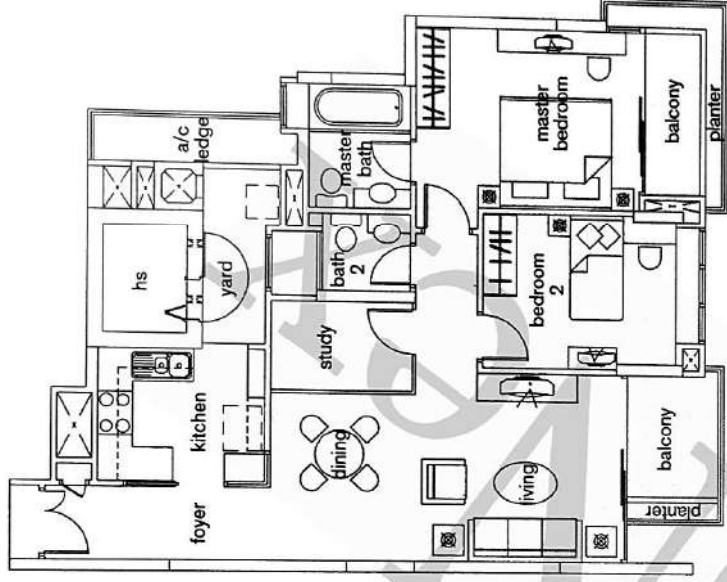
# type A1

2-bedroom apartment + study

type A1 [ 99 sq m / 1,066 sq ft ]

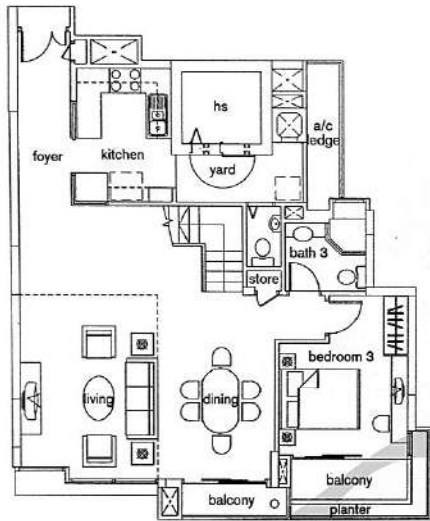
- #02-04 to #14-04
- #02-05 to #15-05
- #02-09 to #15-09
- #02-16 to #15-16
- #02-20 to #15-20
- #02-24 to #15-24
- #02-25 to #14-25

living / dining - 30.3 sq m / 326 sq ft  
master bedroom - 14.2 sq m / 153 sq ft  
bedroom 2 - 11.2 sq m / 121 sq ft



*type PHB1*

3-bedroom penthouse

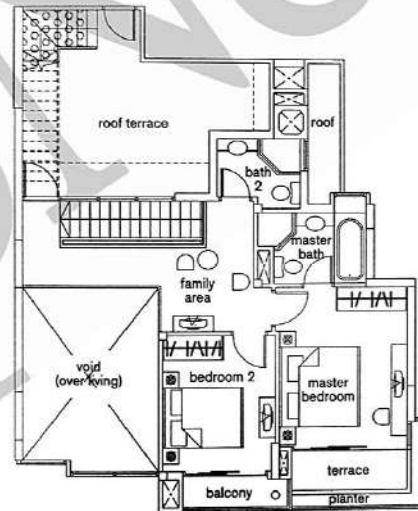
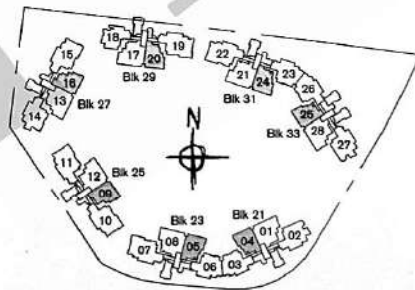


*lower floor*

*type PHB1* [ 286 sq m / 3,078 sq ft ]

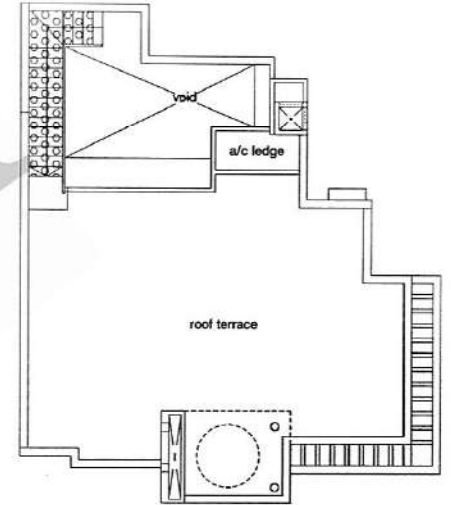
- #16-04
- #17-05
- #17-09
- #17-16
- #17-20
- #17-24
- #16-25

living / dining - 48.2 sq m / 519 sq ft  
 bedroom 3 - 12.3 sq m / 132 sq ft



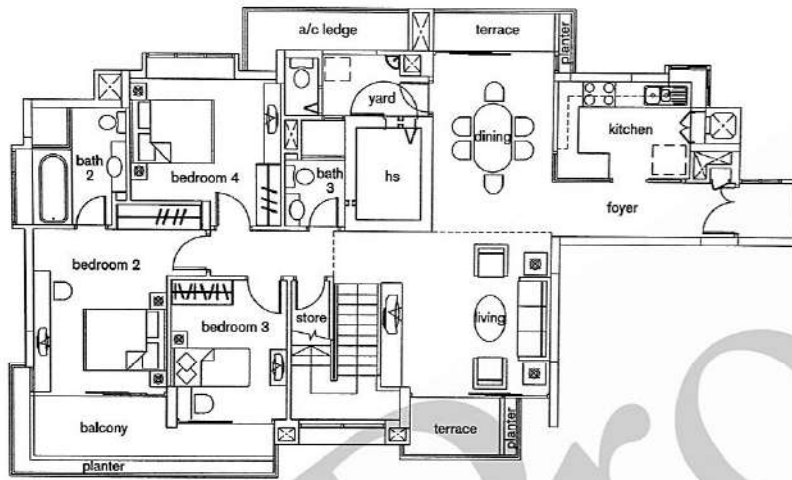
master bedroom - 13.7 sq m / 148 sq ft  
 bedroom 2 - 10.0 sq m / 108 sq ft

*upper floor*

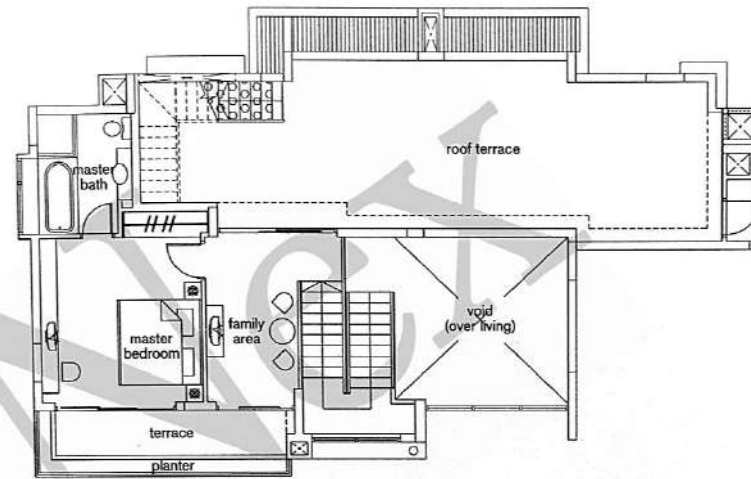


*roof terrace*

type PHC1a  
4-bedroom penthouse



lower floor



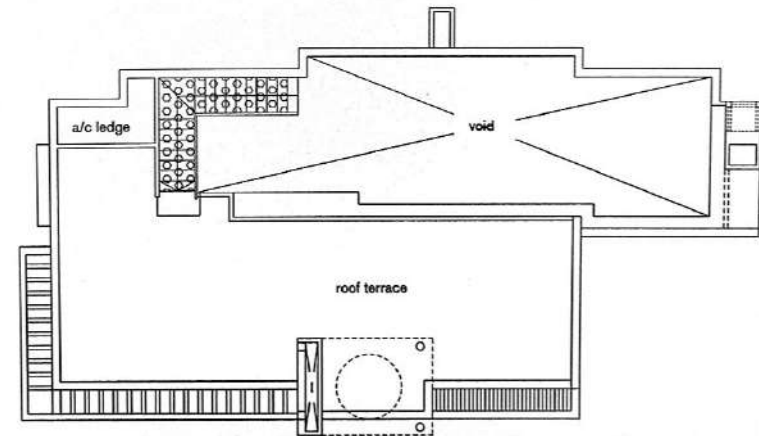
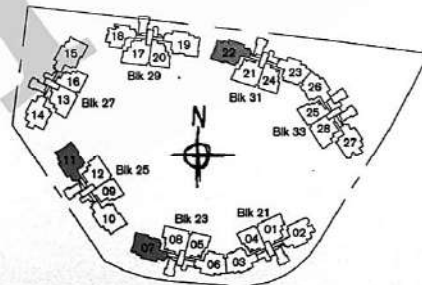
master bedroom - 17.4 sq m / 187 sq ft

upper floor

type PHC1a [385 sq m / 4,143 sq ft]

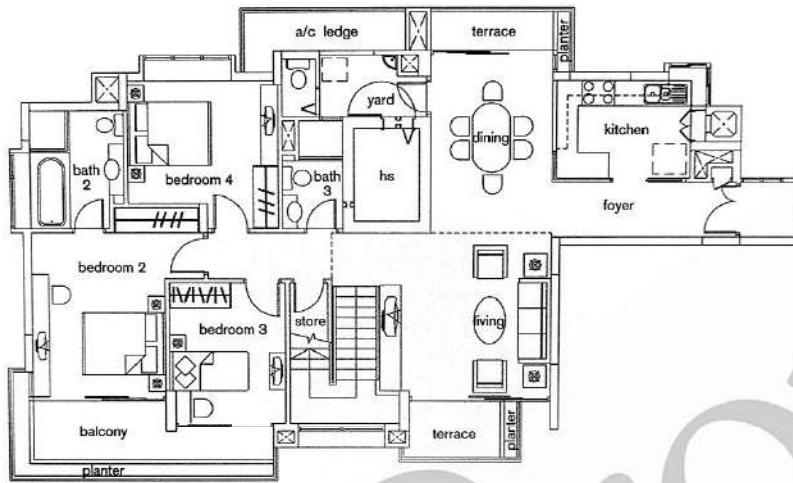
- #17-07
- #17-11
- #17-22

- living / dining - 41.9 sq m / 451 sq ft
- bedroom 2 - 16.0 sq m / 172 sq ft
- bedroom 3 - 10.1 sq m / 109 sq ft
- bedroom 4 - 13.4 sq m / 144 sq ft

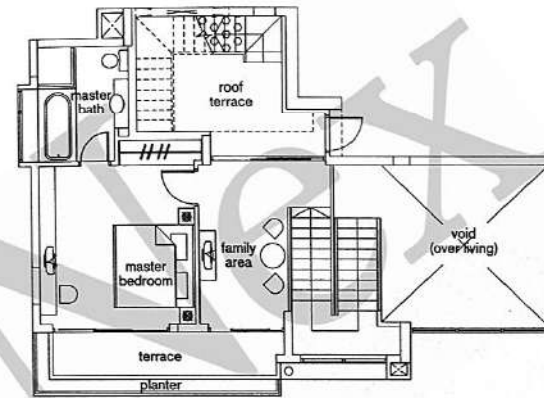


roof terrace

type PHC1  
4-bedroom penthouse

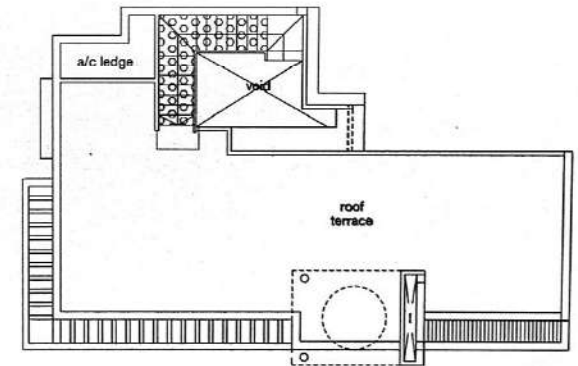


lower floor



master bedroom - 17.4 sq m / 187 sq ft

upper floor



roof terrace

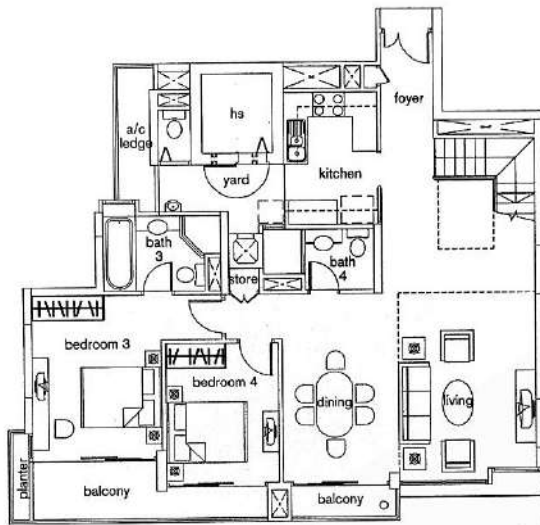
type PHC1 [ 306 sq m / 3,293 sq ft ]

- #17-10
- #17-15
- #17-19

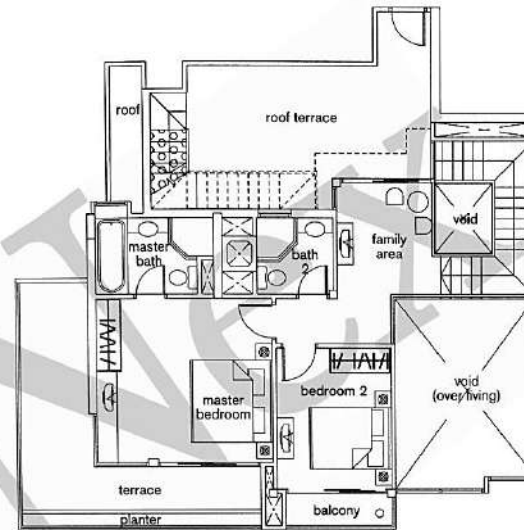
living / dining	- 41.9 sq m / 451 sq ft
bedroom 2	- 16.0 sq m / 172 sq ft
bedroom 3	- 10.1 sq m / 109 sq ft
bedroom 4	- 13.4 sq m / 144 sq ft



type PHC2  
4-bedroom penthouse



lower floor



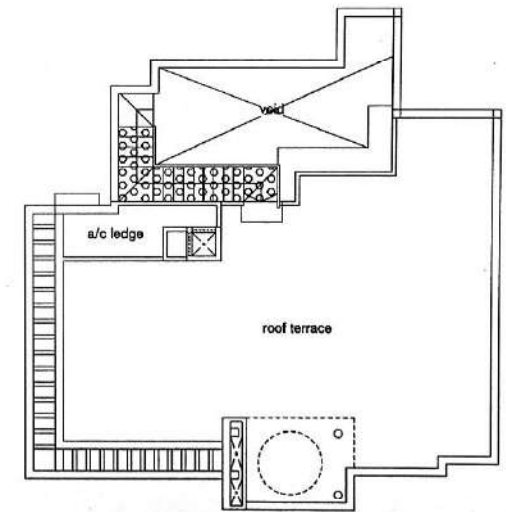
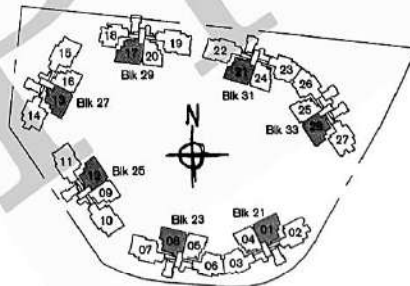
master bedroom - 18.3 sq m / 197 sq ft  
bedroom 2 - 10.3 sq m / 111 sq ft

upper floor

type PHC2 [344 sq m / 3,702 sq ft]

- #16-01
- #17-08
- #17-12
- #17-13
- #17-17
- #17-21
- #16-28

living / dining - 47.9 sq m / 516 sq ft  
bedroom 3 - 15.7 sq m / 169 sq ft  
bedroom 4 - 10.5 sq m / 113 sq ft

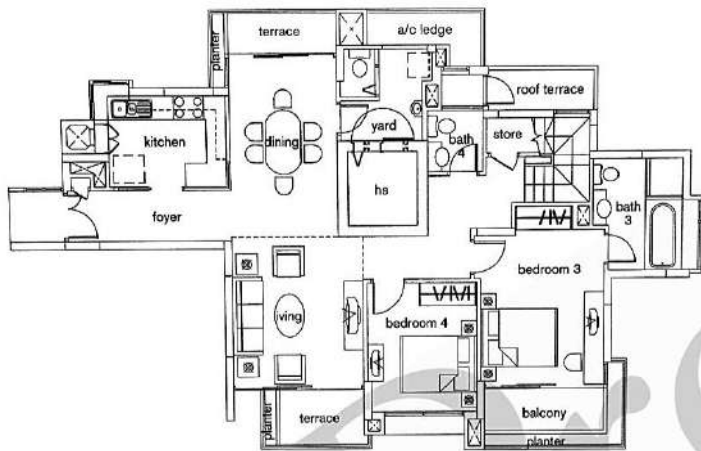


roof terrace

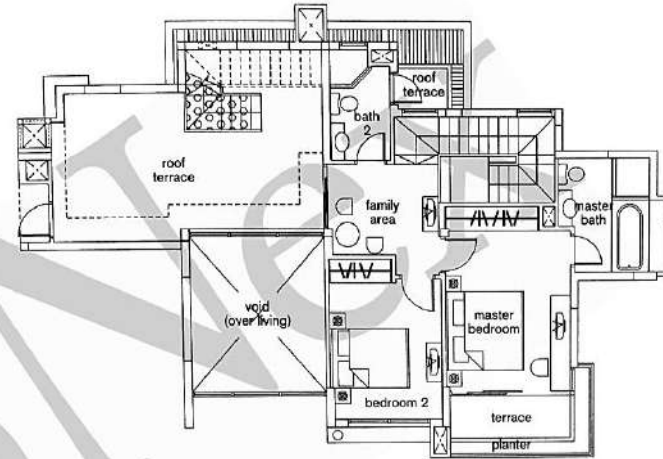
Area includes PES, A/C ledge, bay windows, planter, roof terrace, balcony and void. Some units are a mirror image of the apartment plans shown in the brochure. Please refer to the key plan for orientation. All plans are not to scale and are subject to change as may be approved by the relevant authorities. All floor areas are approximate only and are subject to government survey.

Area includes PES, A/C ledge, bay windows, planter, roof terrace, balcony and void. Some units are a mirror image of the apartment plans shown in the brochure. Please refer to the key plan for orientation. All plans are not to scale and are subject to change as may be approved by the relevant authorities. All floor areas are approximate only and are subject to government survey.

type PHC36  
4-bedroom penthouse

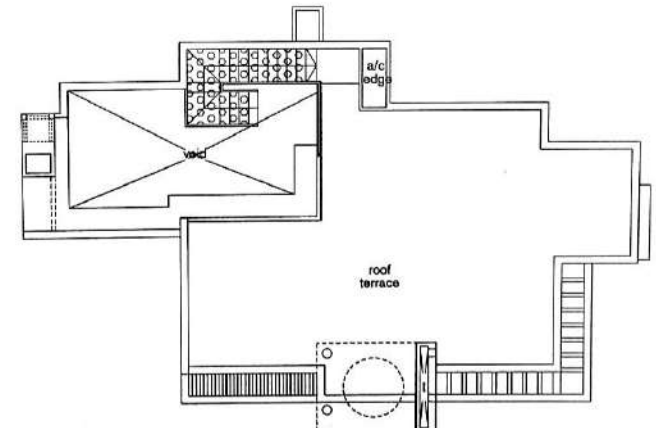


lower floor



master bedroom - 15.4 sq m / 166 sq ft  
bedroom 2 - 11.8 sq m / 127 sq ft

upper floor

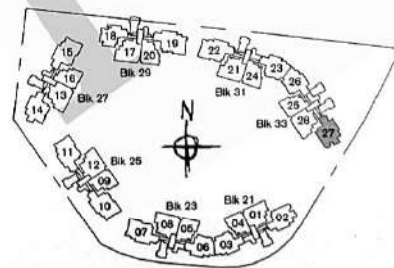


roof terrace

type PHC36 [330 sq m / 3,551 sq ft]

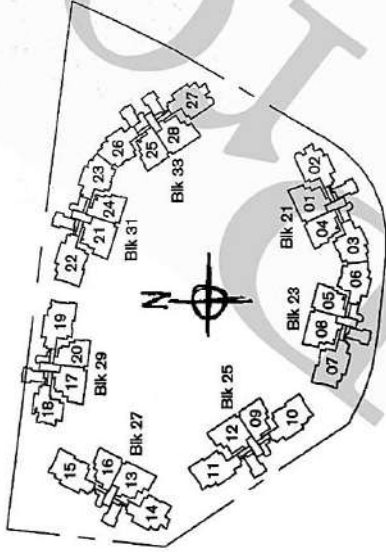
#16-27

living / dining - 41.8 sq m / 450 sq ft  
bedroom 3 - 15.0 sq m / 162 sq ft  
bedroom 4 - 10.6 sq m / 114 sq ft



# type B1p

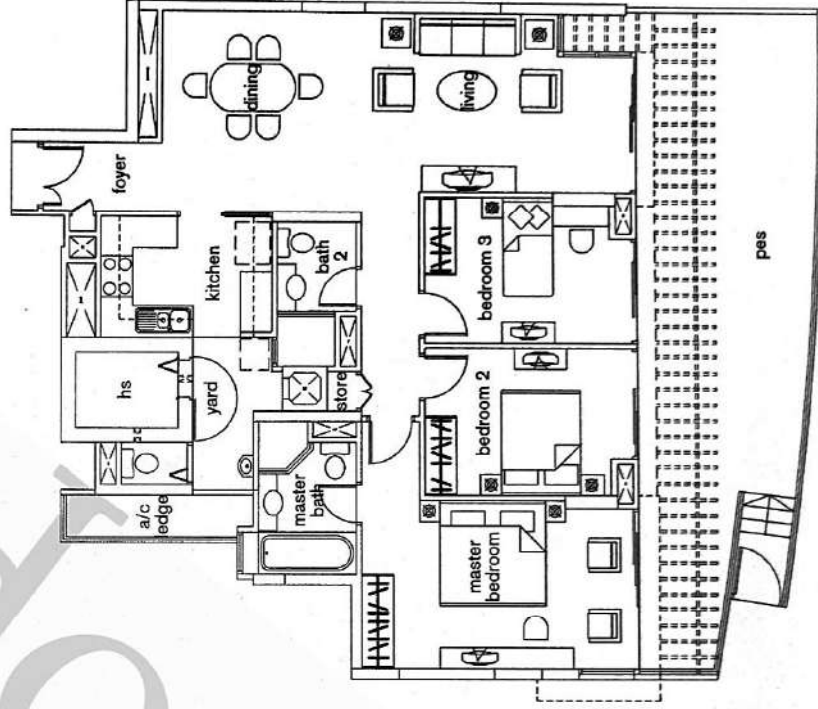
3-bedroom apartment



type B1p [ 158 sq m / 1,701 sq ft ]

- #01-01
- #01-08
- #01-12
- #01-13
- #01-17
- #01-21

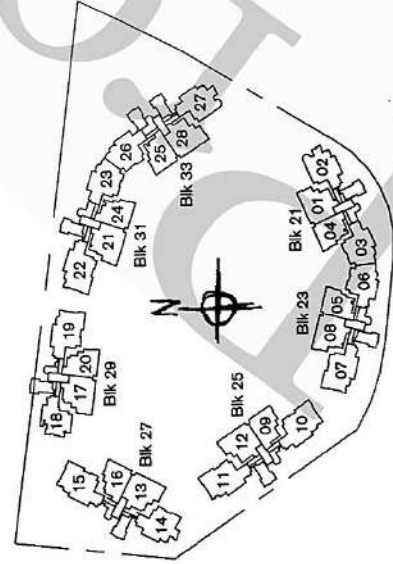
living / dining	- 41.4 sq m / 446 sq ft
master bedroom	- 19.4 sq m / 209 sq ft
bedroom 2	- 11.5 sq m / 124 sq ft
bedroom 3	- 11.4 sq m / 123 sq ft



Area includes PES, A/C ledge, bay windows, planter, roof terrace, balcony and void. Some units are a mirror image of the apartment plans shown in the brochure. Please refer to the key plan for orientation. All plans are not to scale and are subject to change as may be approved by the relevant authorities. All floor areas are approximate only and are subject to government resurvey.

# type B2a

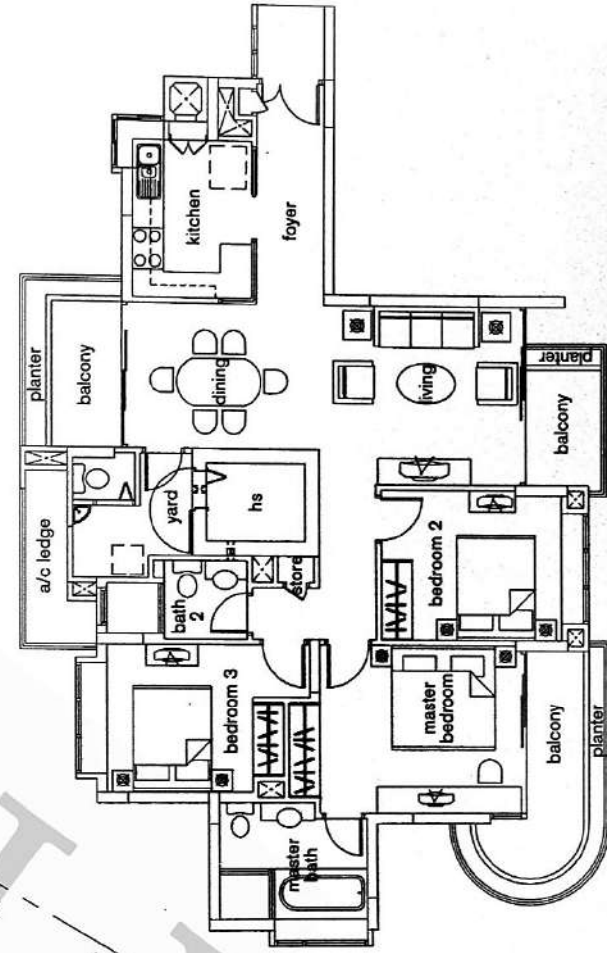
3-bedroom apartment



type B2a [ 130 sq m / 1,399 sq ft ]

#04-02 to #06-02  
#14-02

- living / dining - 36.6 sq m / 394 sq ft
- master bedroom - 14.5 sq m / 156 sq ft
- bedroom 2 - 11.5 sq m / 124 sq ft
- bedroom 3 - 11.9 sq m / 128 sq ft

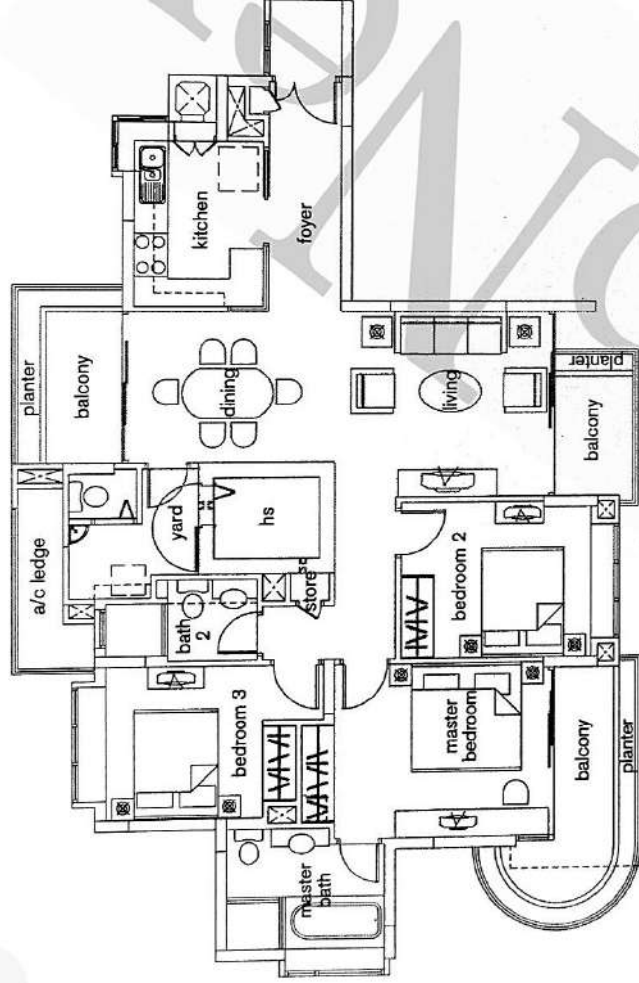


Area includes FES, A/C ledge, bay windows, bay windows, planter, roof terrace, balcony and void. Some units are a mirror image of the apartment plans shown in the brochure. Please refer to the key plan for orientation. All plans are not to scale and are subject to change as may be approved by the relevant authorities. All floor areas are approximate only and are subject to government survey.



type B2b

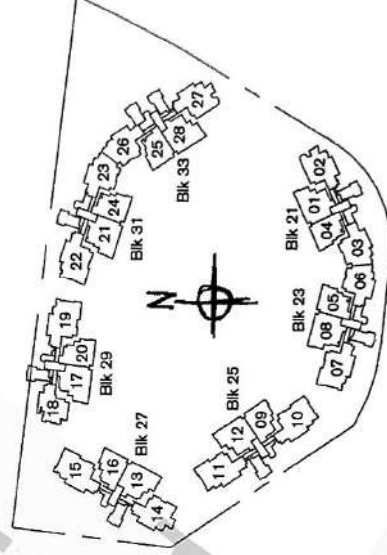
3-bedroom apartment



type B2b [ 130 sq m / 1,399 sq ft ]

#15-02

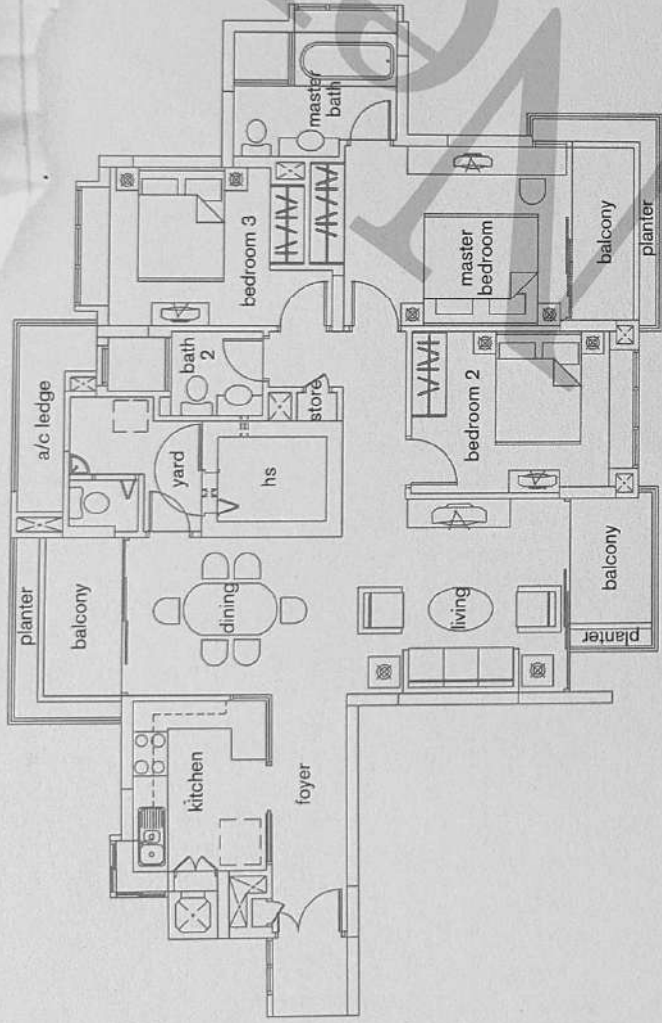
- living / dining - 36.6 sq m / 394 sq ft
- master bedroom - 14.5 sq m / 157 sq ft
- bedroom 2 - 11.5 sq m / 124 sq ft
- bedroom 3 - 11.9 sq m / 128 sq ft





# type B2d and B2e

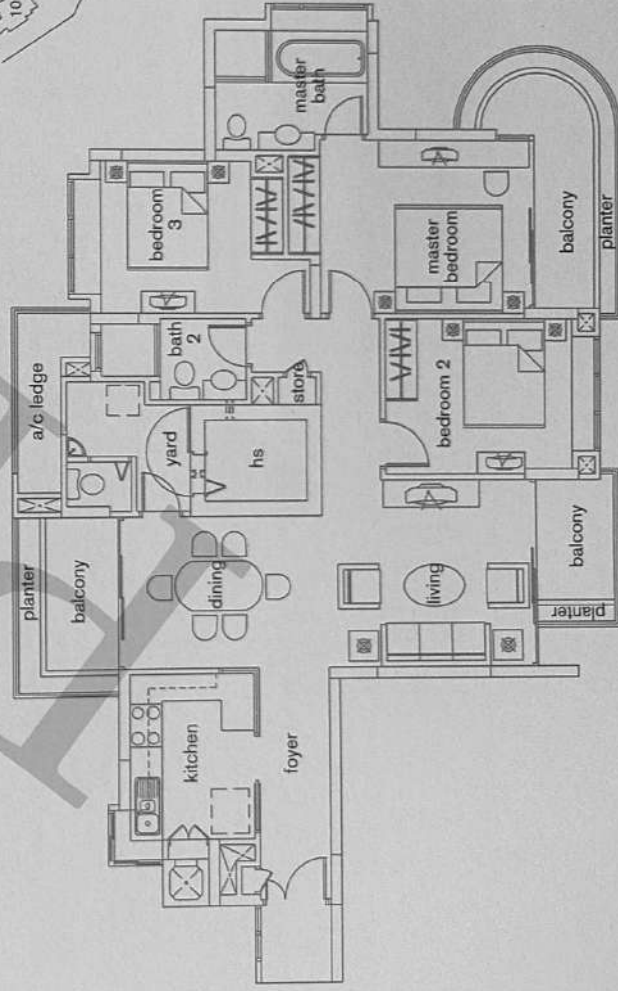
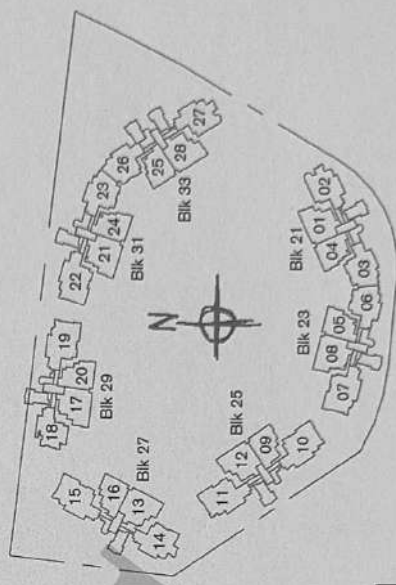
3-bedroom apartment



type B2d [ 127 sq m / 1,367 sq ft ]

#03-27  
#07-27 to #13-27

- living / dining - 36.6 sq m / 394 sq ft
- master bedroom - 14.5 sq m / 157 sq ft
- bedroom 2 - 11.5 sq m / 124 sq ft
- bedroom 3 - 11.9 sq m / 128 sq ft



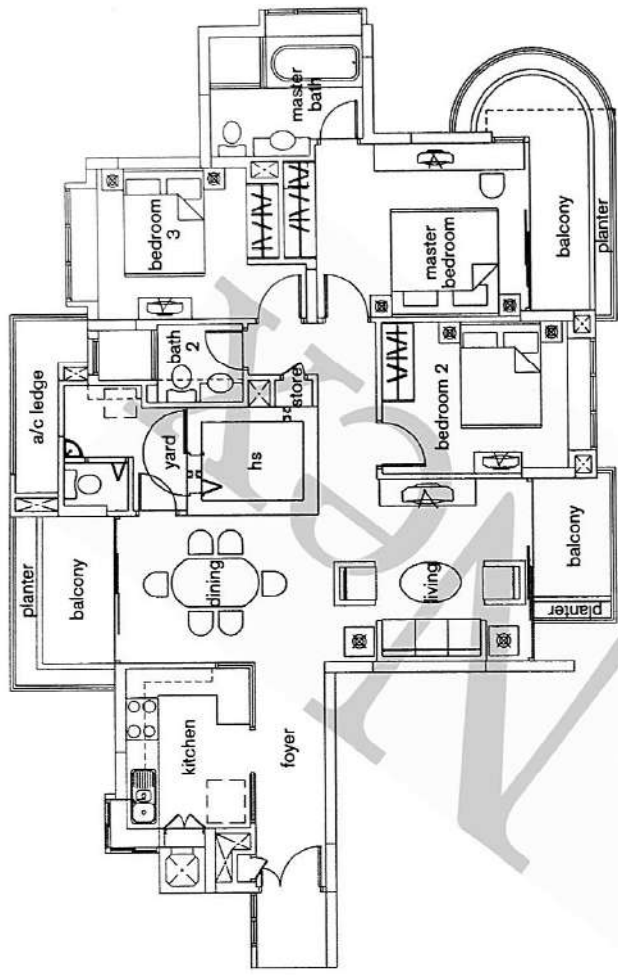
type B2e [ 130 sq m / 1,399 sq ft ]

#04-27 to #06-27  
#14-27

- living / dining - 36.6 sq m / 394 sq ft
- master bedroom - 14.5 sq m / 157 sq ft
- bedroom 2 - 11.5 sq m / 124 sq ft
- bedroom 3 - 11.9 sq m / 128 sq ft

# type B2f

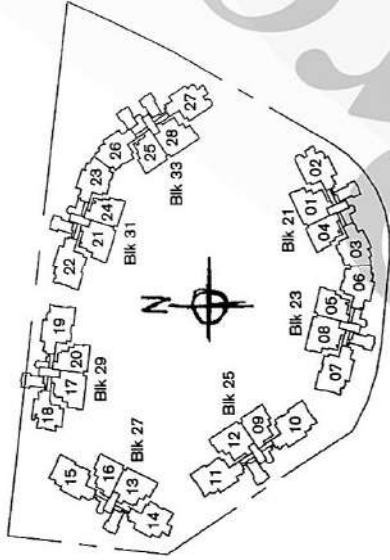
3-bedroom apartment



type B2f [ 130 sq m / 1,399 sq ft ]

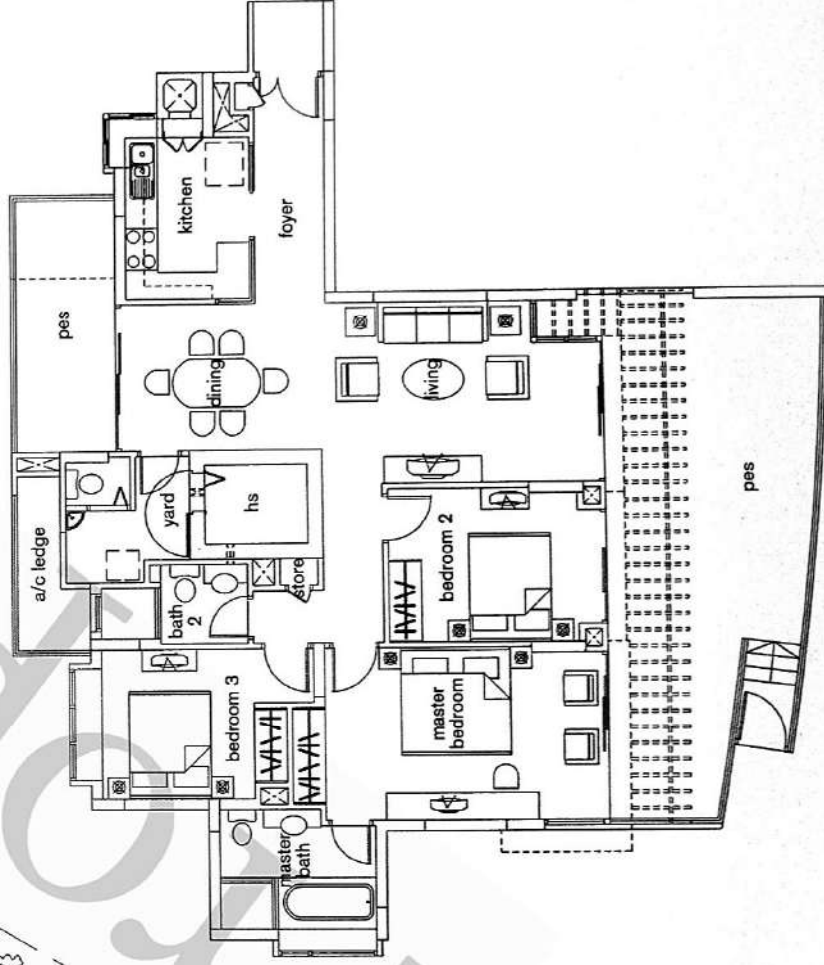
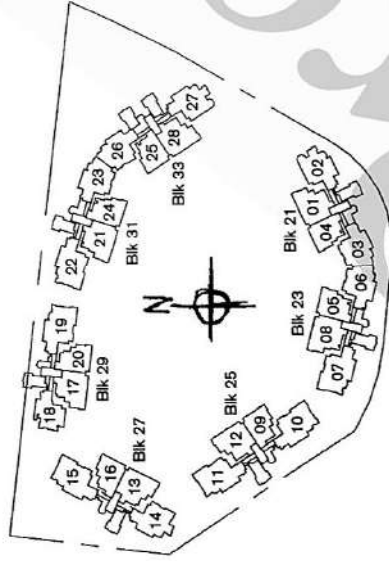
#15-27

- living / dining - 36.6 sq m / 394 sq ft
- master bedroom - 14.5 sq m / 157 sq ft
- bedroom 2 - 11.5 sq m / 124 sq ft
- bedroom 3 - 11.9 sq m / 128 sq ft



# type B2p

3-bedroom apartment



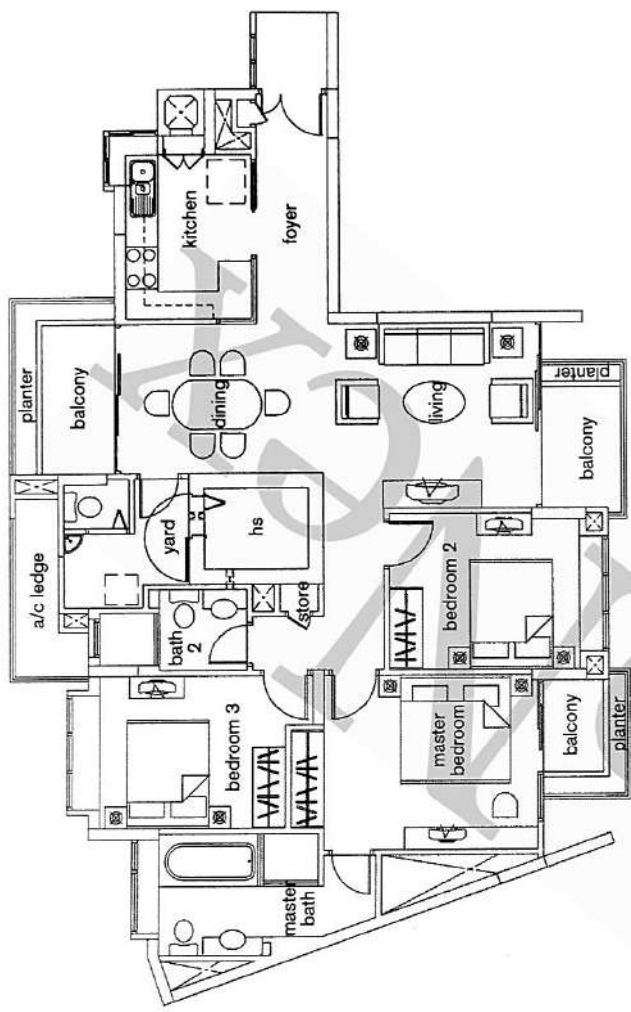
type B2p [ 164 sq m / 1,765 sq ft ]

#01-14

- living / dining - 39.9 sq m / 430 sq ft
- master bedroom - 18.5 sq m / 199 sq ft
- bedroom 2 - 11.5 sq m / 124 sq ft
- bedroom 3 - 11.9 sq m / 128 sq ft

# type B3

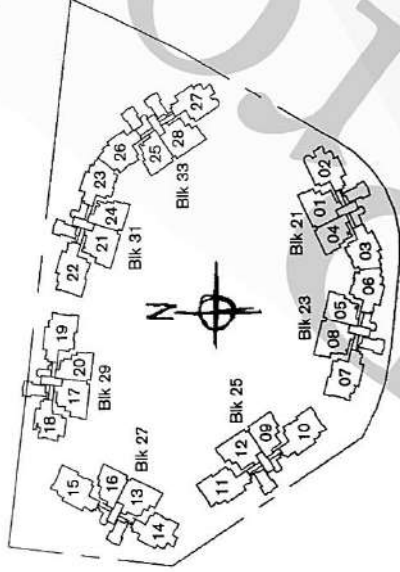
3-bedroom apartment



type B3 [ 126 sq m / 1,356 sq ft ]

- #07-03 to #14-03
- #07-06 to #15-06
- #07-23 to #15-23
- #07-26 to #14-26

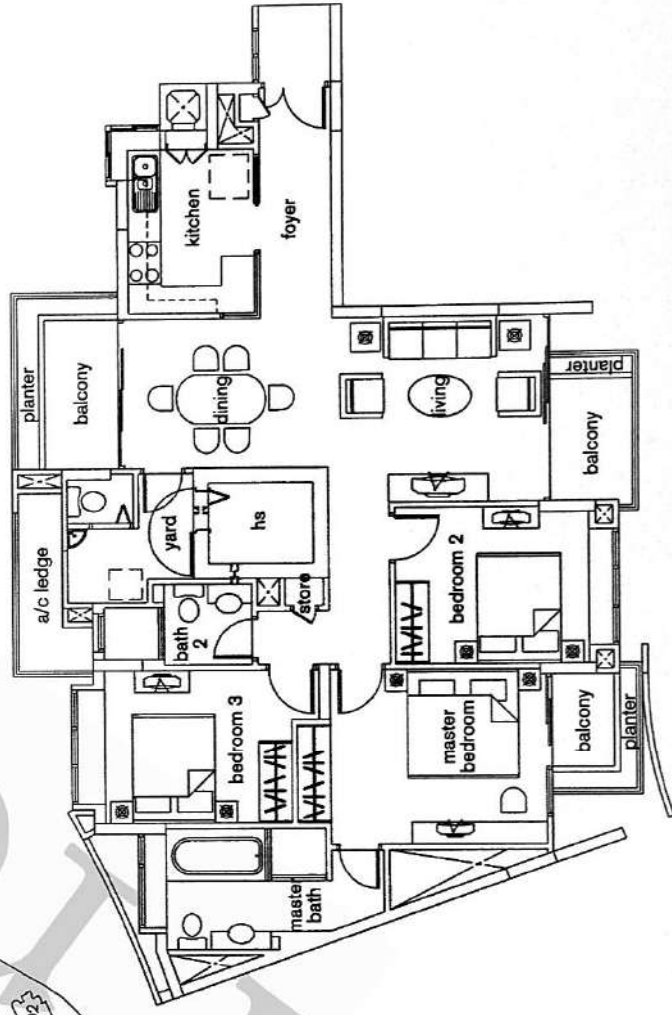
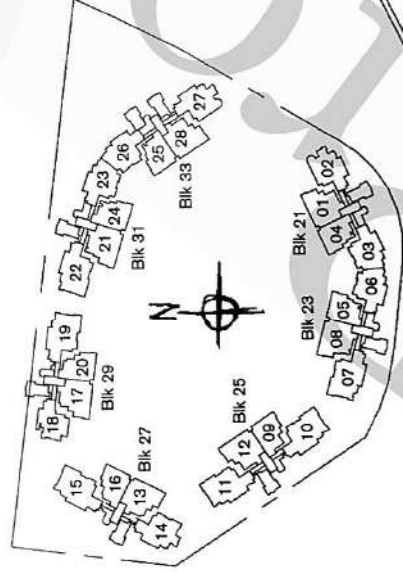
- living / dining - 36.6 sq m / 394 sq ft
- master bedroom - 14.5 sq m / 156 sq ft
- bedroom 2 - 11.5 sq m / 124 sq ft
- bedroom 3 - 11.9 sq m / 128 sq ft



Area includes PES, A/C ledge, bay windows, planter, roof terrace, balcony and void. Some units are a mirror image of the apartment plans shown in the brochure. Please refer to the key plan for orientation. All plans are not to scale and are subject to change as may be approved by the relevant authorities. All floor areas are approximate only and are subject to government resurvey.

# type B3a

3-bedroom apartment



type B3a [ 126 sq m / 1,356 sq ft ]

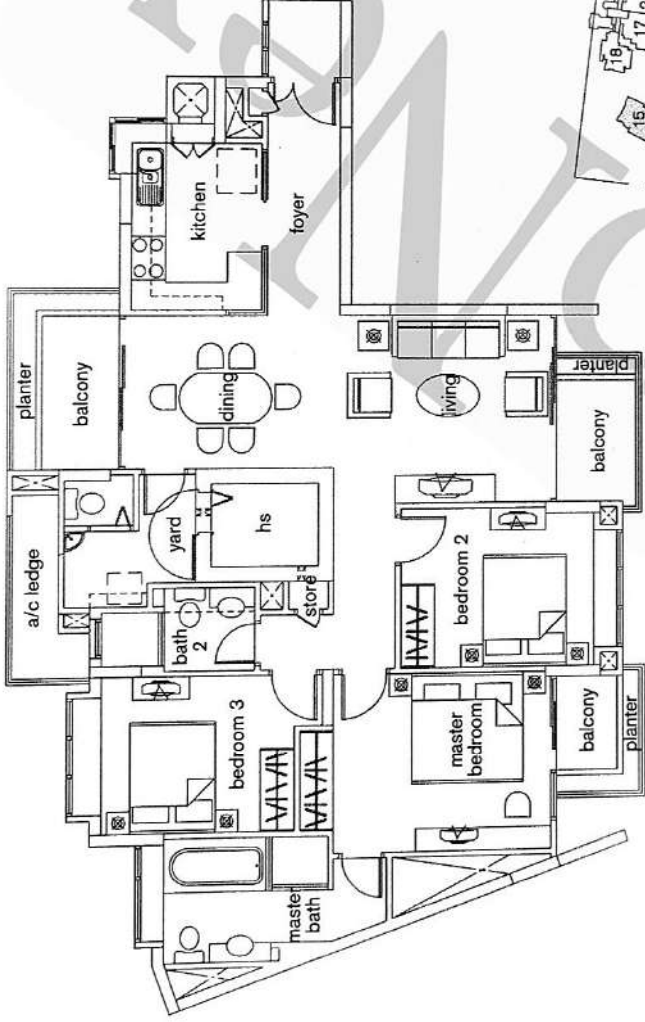
- #03-03 to #06-03
- #03-06 to #06-06
- #04-23 to #06-23
- #04-26 to #06-26

- living / dining - 36.6 sq m / 394 sq ft
- master bedroom - 14.5 sq m / 156 sq ft
- bedroom 2 - 11.5 sq m / 124 sq ft
- bedroom 3 - 11.9 sq m / 128 sq ft

Area includes PES, A/C ledge, bay windows, planter, roof terrace, balcony and void. Some units are a mirror image of the apartment plans shown in the brochure. Please refer to the key plan for orientation. All plans are not to scale and are subject to change as may be approved by the relevant authorities. All floor areas are approximate only and are subject to government resurvey.

# type B36

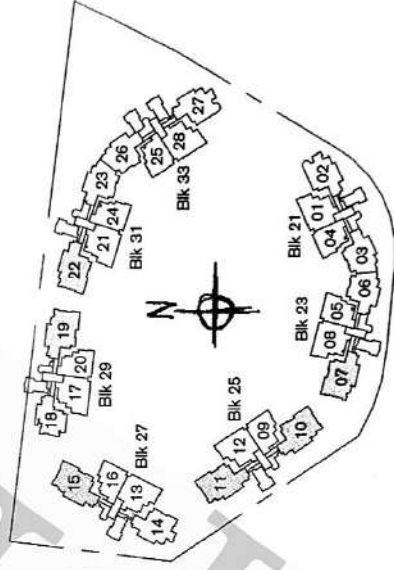
3-bedroom / 4-bedroom apartment



type B36 [ 126 sq m / 1,356 sq ft ]

- #15-03
- #16-06
- #16-23
- #15-26

- living / dining - 36.6 sq m / 394 sq ft
- master bedroom - 14.5 sq m / 156 sq ft
- bedroom 2 - 11.5 sq m / 124 sq ft
- bedroom 3 - 11.9 sq m / 128 sq ft

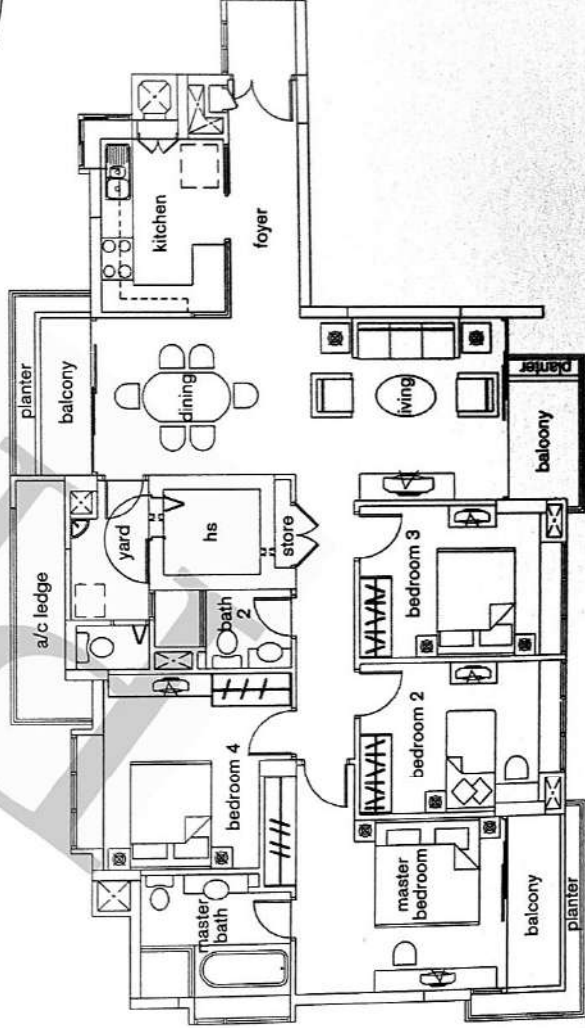
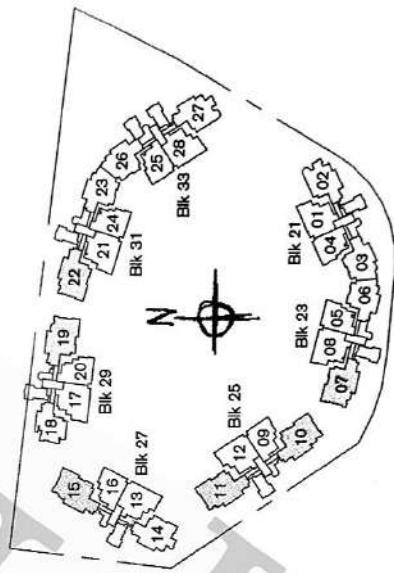


Area includes PES, A/C ledge, bay windows, planter, roof terrace, balcony and void. Some units are a mirror image of the apartment plans shown in the brochures. Please refer to the key plan for orientation. All plans are not to scale and are subject to change as may be approved by the relevant authorities. All floor areas are approximate only and are subject to government resurvey.



# type C1

3-bedroom / 4-bedroom apartment



type C1 [ 143 sq m / 1,539 sq ft ]

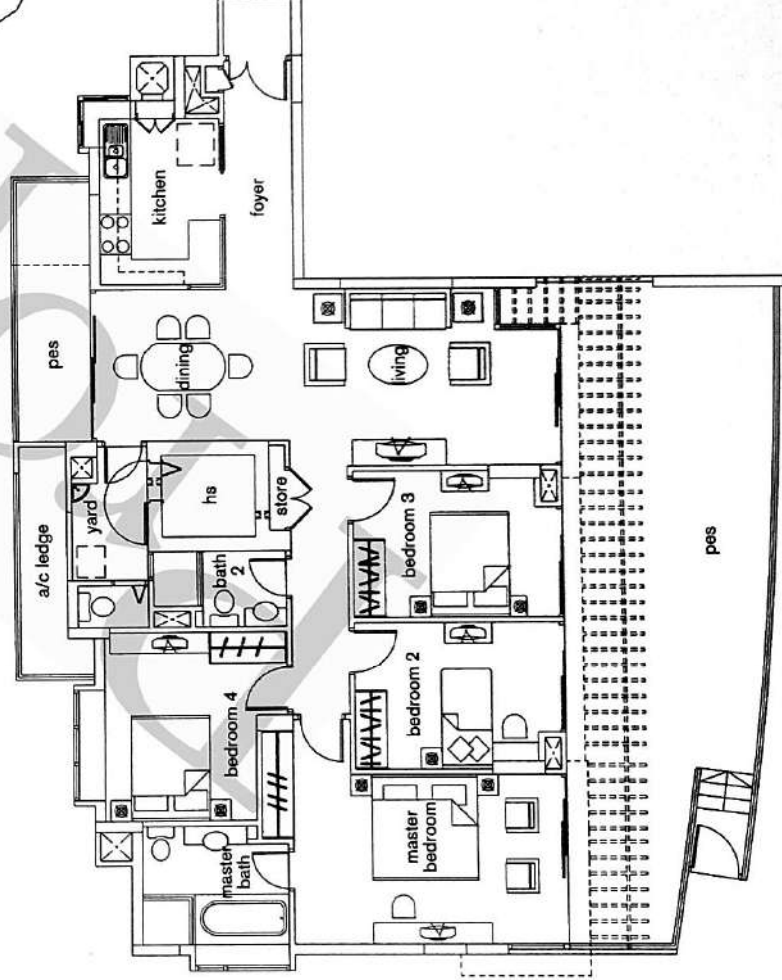
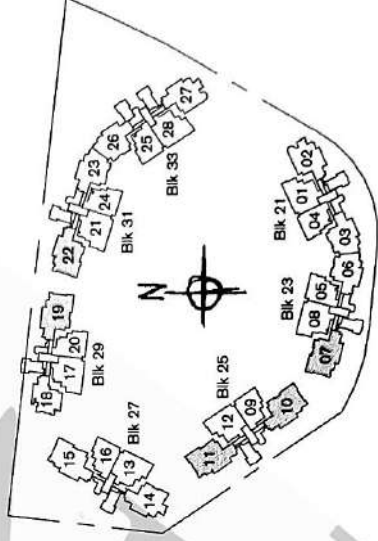
- #02-07 to #16-07
- #02-10 to #16-10
- #02-11 to #16-11
- #02-15 to #16-15
- #02-19 to #16-19
- #02-22 to #16-22

- living / dining - 38.0 sq m / 409 sq ft
- master bedroom - 16.0 sq m / 172 sq ft
- bedroom 2 - 11.3 sq m / 122 sq ft
- bedroom 3 - 11.3 sq m / 122 sq ft
- bedroom 4 - 13.4 sq m / 144 sq ft

Area includes PES, A/C ledge, bay windows, planter, roof terrace, balcony and void. Some units are a mirror image of the apartment plans shown in the brochures. Please refer to the key plan for orientation. All plans are not to scale and are subject to change as may be approved by the relevant authorities. All floor areas are approximate only and are subject to government resurvey.

# type Cipa

4-bedroom apartment



type Cipa [ 191 sq m / 2,056 sq ft ]

#01-07

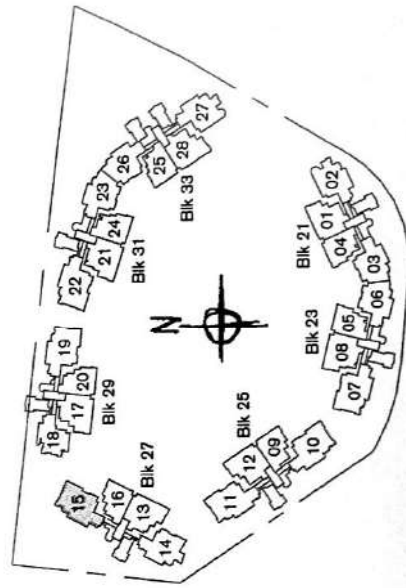
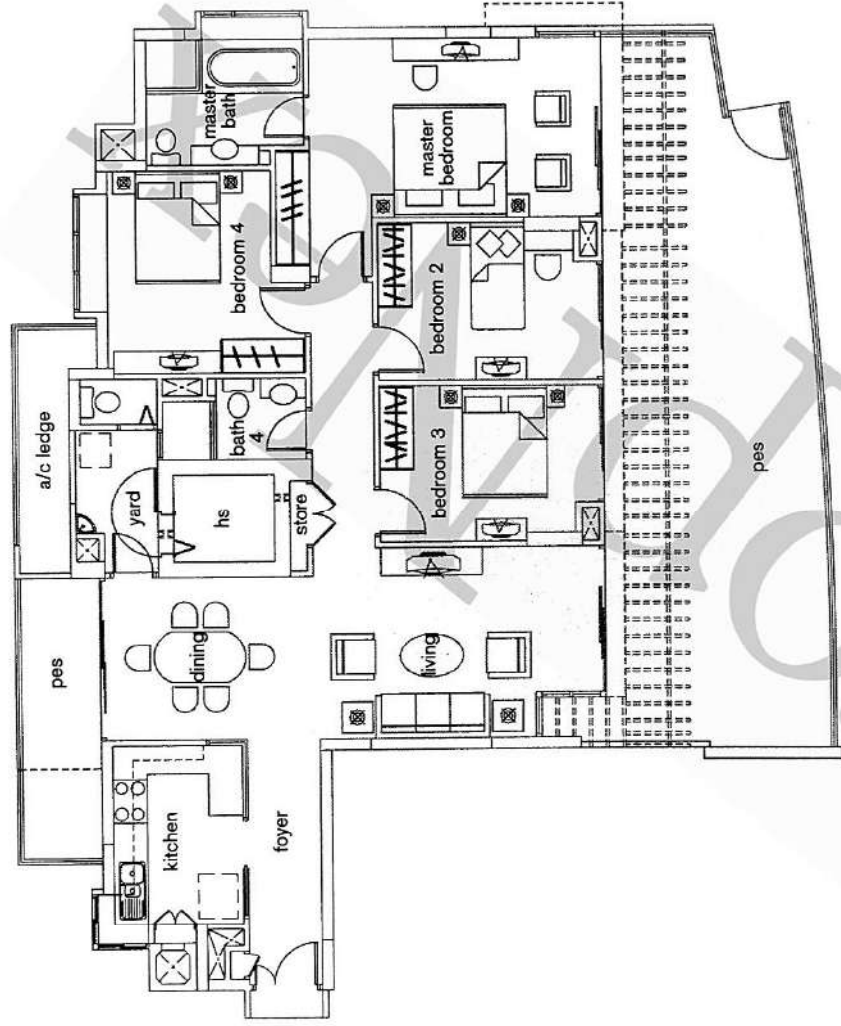
#01-11

#01-22

- living / dining - 41.4 sq m / 446 sq ft
- master bedroom - 20.0 sq m / 215 sq ft
- bedroom 2 - 11.3 sq m / 122 sq ft
- bedroom 3 - 11.3 sq m / 122 sq ft
- bedroom 4 - 13.4 sq m / 144 sq ft

Area includes PES, A/C ledge, bay windows, planter, roof terrace, balcony and void. Some units are a mirror image of the apartment plans shown in the brochure. Please refer to the key plan for orientation. All plans are not to scale and are subject to change as may be approved by the relevant authorities. All floor areas are approximate only and are subject to government resurvey.

*type C1p6*  
4-bedroom apartment



*type C1p6* [ 191 sq m / 2,056 sq ft ]

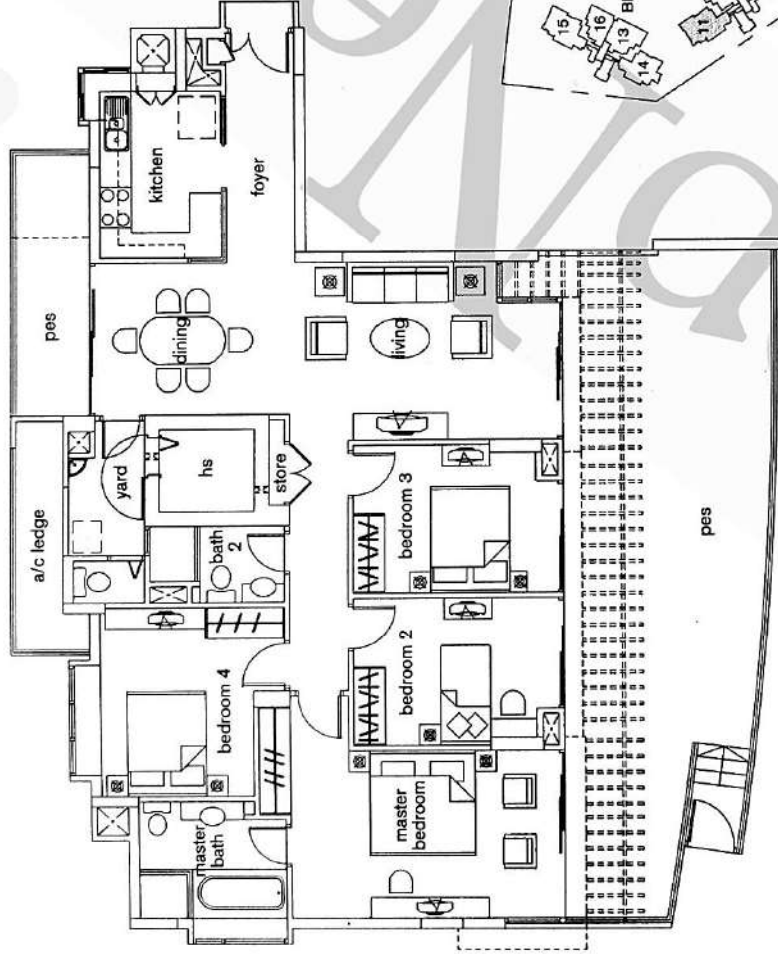
#01-15

living / dining	- 41.4 sq m / 446 sq ft
master bedroom	- 20.0 sq m / 215 sq ft
bedroom 2	- 11.3 sq m / 122 sq ft
bedroom 3	- 11.3 sq m / 122 sq ft
bedroom 4	- 13.4 sq m / 144 sq ft

Area includes PES, A/C ledge, bay windows, planter, roof terrace, balcony and void. Some units are a mirror image of the apartment plans shown in the brochure. Please refer to the key plan for orientation. All plans are not to scale and are subject to change as may be approved by the relevant authorities. All floor areas are approximate only and are subject to government resurvey.

# type C1p

4-bedroom apartment



## type C1p [ 191 sq m / 2,056 sq ft ]

#01-10  
#01-19

- living / dining - 41.4 sq m / 446 sq ft
- master bedroom - 20.0 sq m / 215 sq ft
- bedroom 2 - 11.3 sq m / 122 sq ft
- bedroom 3 - 11.3 sq m / 122 sq ft
- bedroom 4 - 13.4 sq m / 144 sq ft



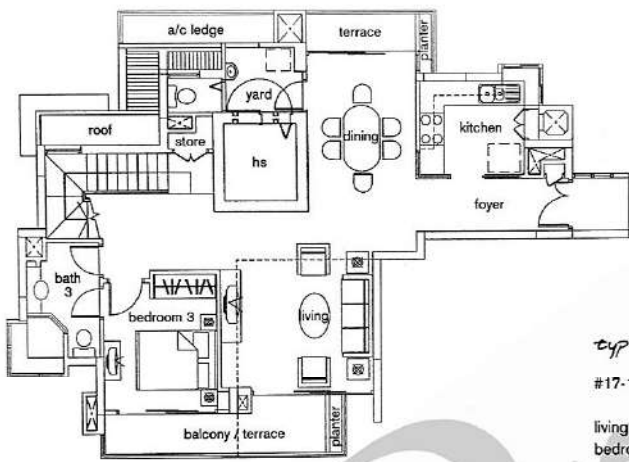
## type C1pe [ 191 sq m / 2,056 sq ft ]

#01-07  
#01-11  
#01-22

- living / dining - 41.4 sq m / 446 sq ft
- master bedroom - 20.0 sq m / 215 sq ft
- bedroom 2 - 11.3 sq m / 122 sq ft
- bedroom 3 - 11.3 sq m / 122 sq ft
- bedroom 4 - 13.4 sq m / 144 sq ft

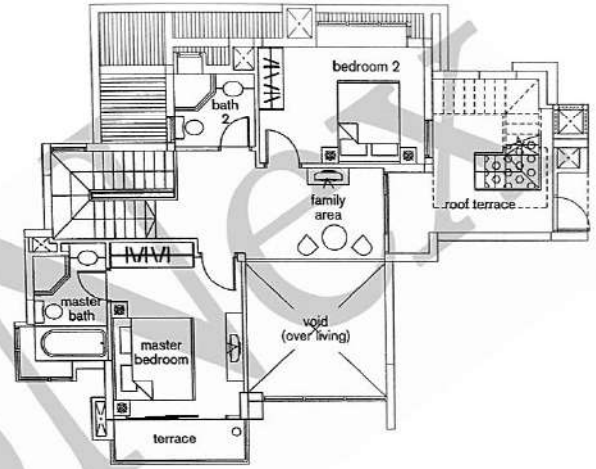
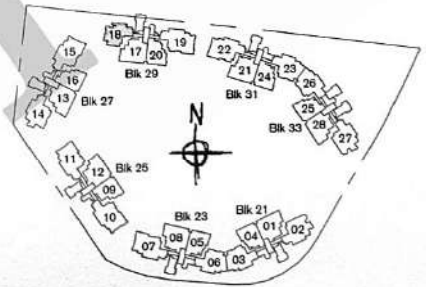
Area includes PES, A/C ledge, bay windows, planter, roof terrace, balcony and void. Some units are a mirror image of the apartment plans shown in the brochure. Please refer to the key plan for orientation. All plans are not to scale and are subject to change as may be approved by the relevant authorities. All floor areas are approximate only and are subject to government resurvey.

type PHB2  
3-bedroom penthouse



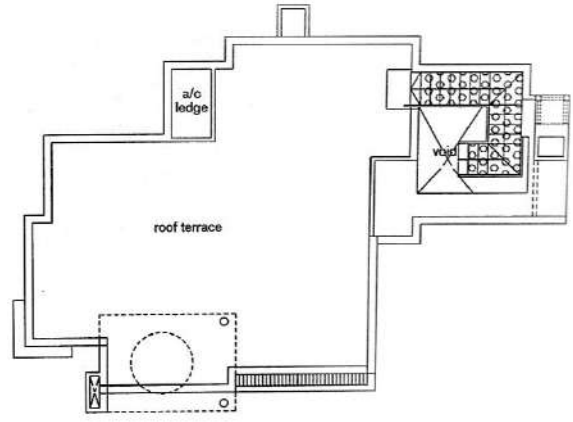
lower floor

type PHB2 [268 sq m / 2,884 sq ft]  
#17-18  
living / dining - 43.5 sq m / 468 sq ft  
bedroom 3 - 10.1 sq m / 109 sq ft



master bedroom - 13.9 sq m / 150 sq ft  
bedroom 2 - 13.4 sq m / 144 sq ft

upper floor

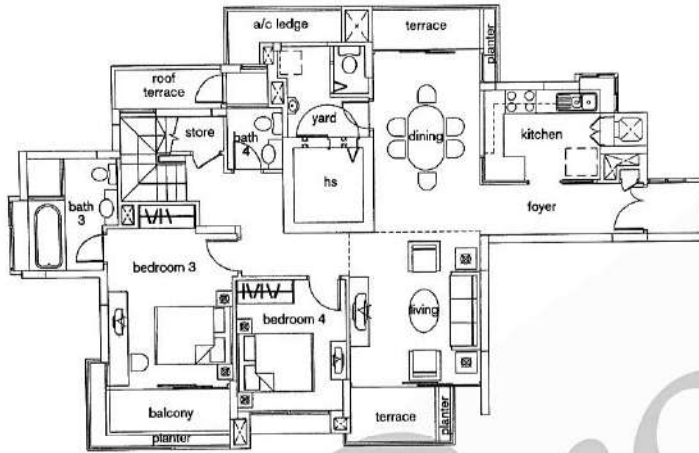


roof terrace

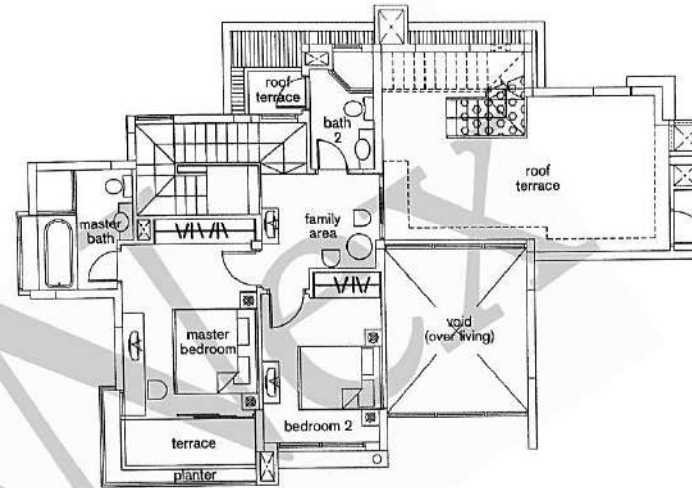
Area includes PES, A/C ledge, bay windows, planter, roof terrace, balcony and void. Some units are a mirror image of the apartment plans shown in the brochure. Please refer to the key plan for orientation. All plans are not to scale and are subject to change as may be approved by the relevant authorities. All floor areas are approximate only and are subject to government resurvey.

Area includes PES, A/C ledge, bay windows, planter, roof terrace, balcony and void. Some units are a mirror image of the apartment plans shown in the brochure. Please refer to the key plan for orientation. All plans are not to scale and are subject to change as may be approved by the relevant authorities. All floor areas are approximate only and are subject to government resurvey.

*type PHC3*  
4-bedroom penthouse



*lower floor*



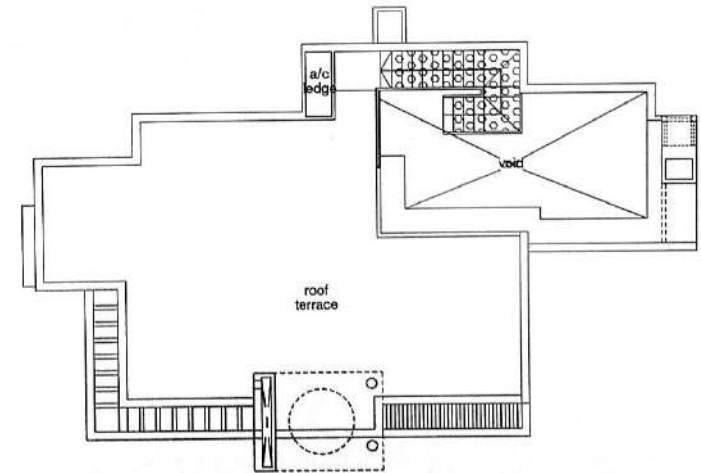
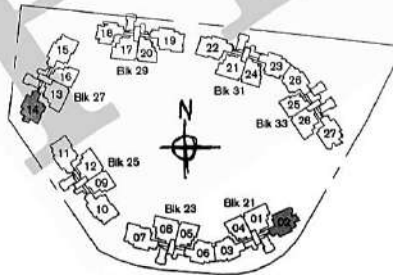
master bedroom - 15.4 sq m / 166 sq ft  
bedroom 2 - 11.8 sq m / 127 sq ft

*upper floor*

*type PHC3* [ 330 sq m / 3,551 sq ft ]

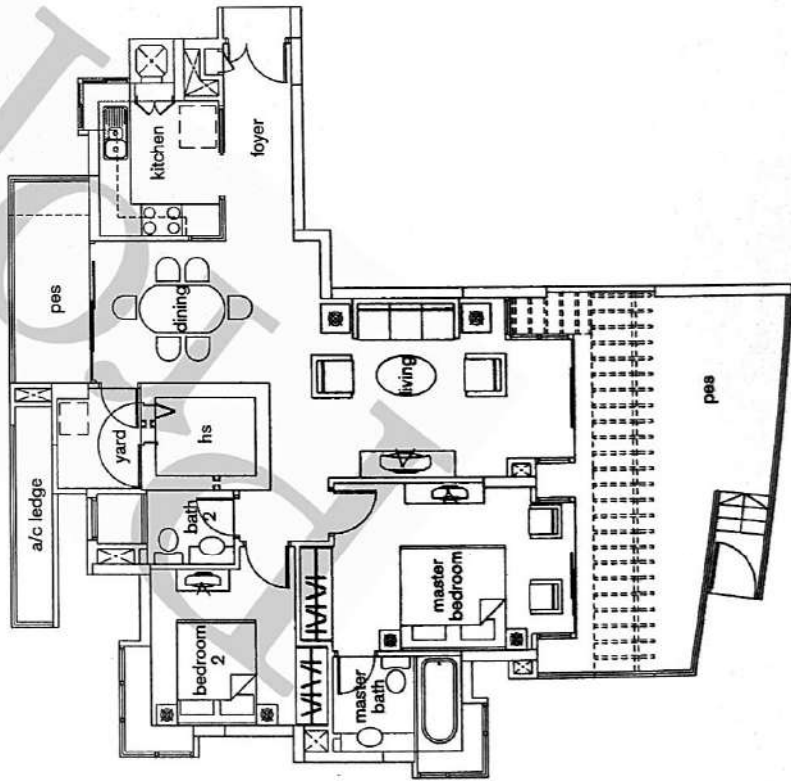
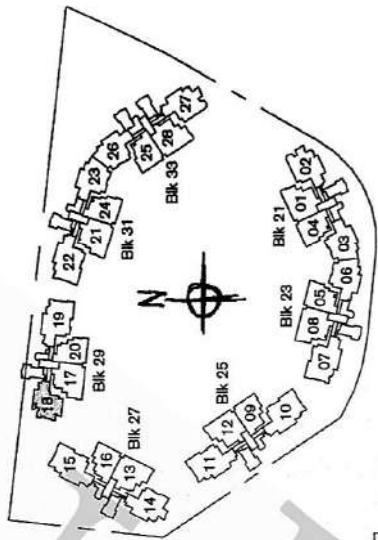
#16-02  
#17-14

living / dining - 41.8 sq m / 450 sq ft  
bedroom 3 - 15.0 sq m / 162 sq ft  
bedroom 4 - 10.6 sq m / 114 sq ft



*roof terrace*

*type A2p*  
*2-bedroom apartment*

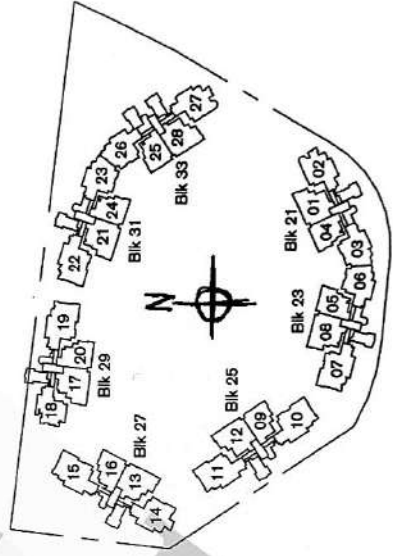


*type A2p* [ 130 sq m / 1,399 sq ft ]  
 #01-18  
 living / dining - 37.8 sq m / 407 sq ft  
 master bedroom - 15.8 sq m / 170 sq ft  
 bedroom 2 - 12.0 sq m / 129 sq ft

Area includes PES, A/C ledge, bay windows, planter, roof terrace, balcony and void. Some units are a mirror image of the apartment plans shown in the brochure. Please refer to the key plan for orientation. All plans are not to scale and are subject to change as may be approved by the relevant authorities. All floor areas are approximate only and are subject to government resurvey.

# type B1a

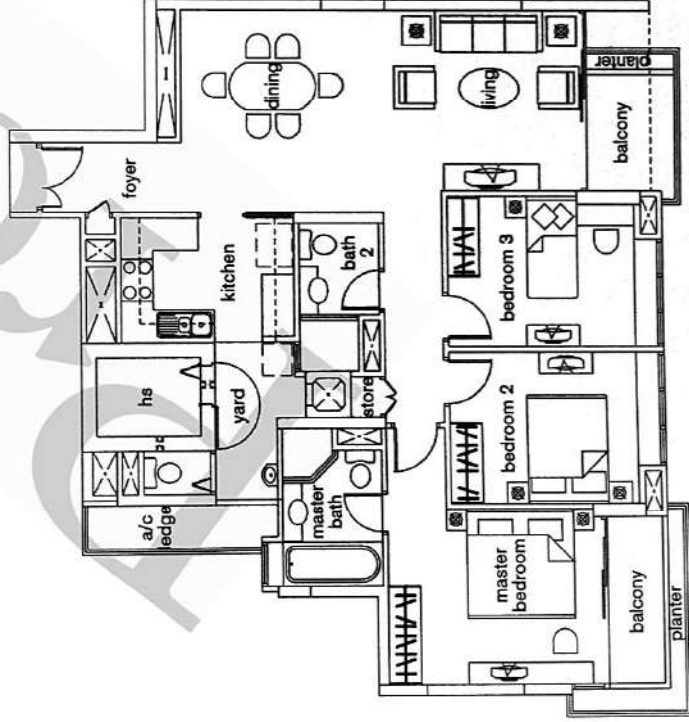
3-bedroom apartment



## type B1a [ 120 sq m / 1,292 sq ft ]

- #15-01
- #16-08
- #16-12
- #16-13
- #16-17
- #16-21
- #15-28

living / dining	- 37.9 sq m / 408 sq ft
master bedroom	- 15.6 sq m / 168 sq ft
bedroom 2	- 11.5 sq m / 124 sq ft
bedroom 3	- 11.4 sq m / 123 sq ft

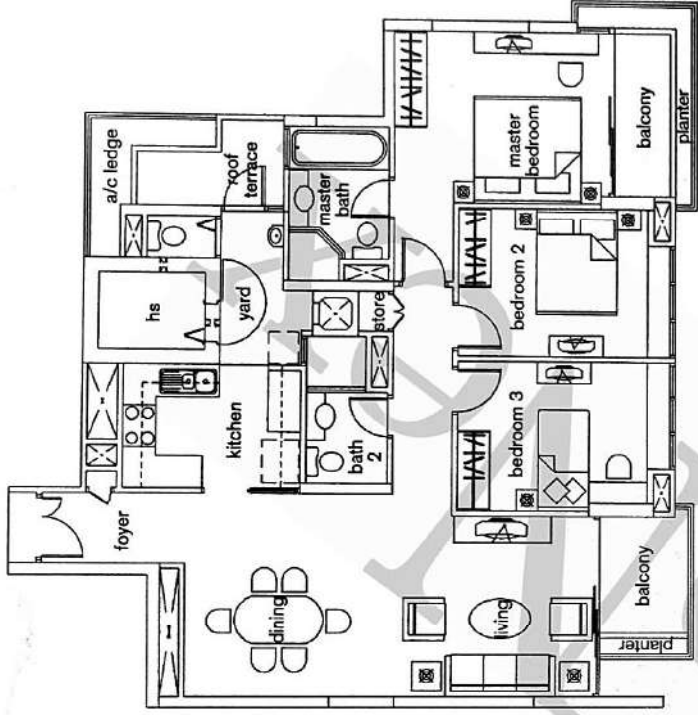


Area includes PES, A/C ledge, bay windows, planter, roof terrace, balcony and void. Some units are a mirror image of the apartment plans shown in the brochure. Please refer to the key plan for orientation. All plans are not to scale and are subject to change as may be approved by the relevant authorities. All floor areas are approximate only and are subject to government resurvey.



# type B1b

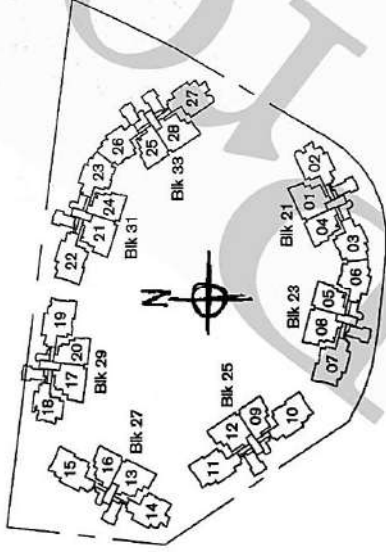
3-bedroom apartment



type B1b [ 123 sq m / 1,324 sq ft ]

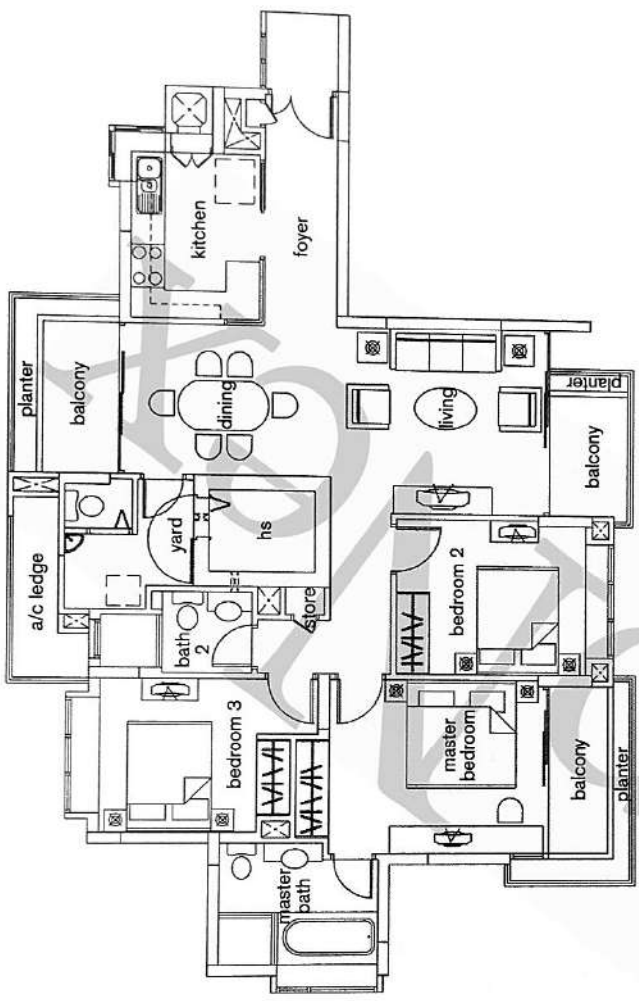
#03-28

- living / dining - 37.9 sq m / 408 sq ft
- master bedroom - 15.6 sq m / 168 sq ft
- bedroom 2 - 11.5 sq m / 124 sq ft
- bedroom 3 - 11.4 sq m / 123 sq ft



# type B2

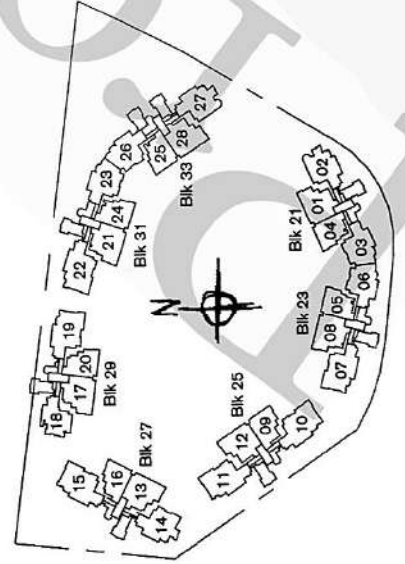
3-bedroom apartment



type B2 [ 127 sq m / 1,367 sq ft ]

- #02-02 & #03-02
- #07-02 to #13-02
- #02-14 to #15-14

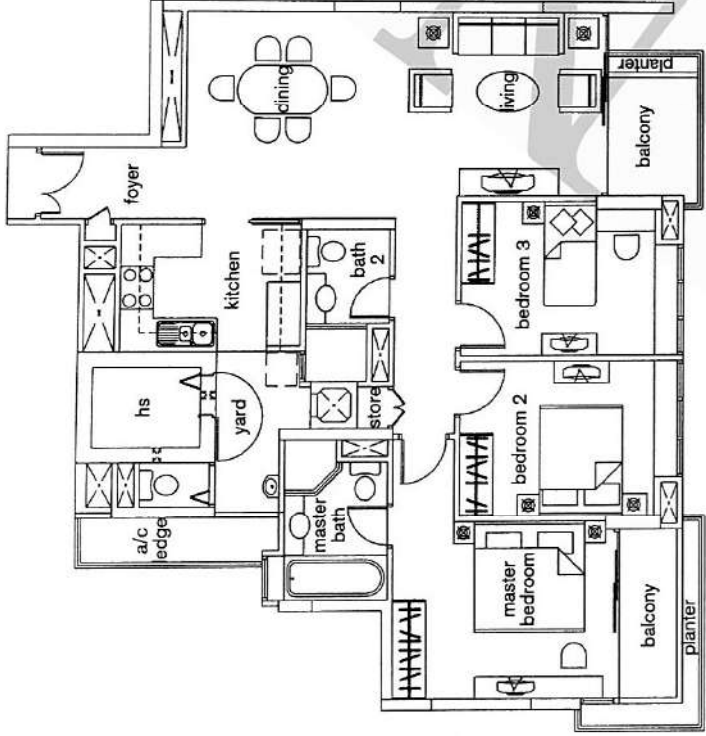
- living / dining - 36.6 sq m / 394 sq ft
- master bedroom - 14.5 sq m / 156 sq ft
- bedroom 2 - 11.5 sq m / 124 sq ft
- bedroom 3 - 11.9 sq m / 128 sq ft



Area includes FES, A/C ledge, bay windows, planter, roof terrace, balcony and void. Some units are a mirror image of the apartment plans shown in the brochure. Please refer to the key plan for orientation. All plans are not to scale and are subject to change as may be approved by the relevant authorities. All floor areas are approximate only and are subject to government resurvey.

# type B1

3-bedroom apartment



type B1 [ 120 sq m / 1,292 sq ft ]

#02-01 to #14-01

#02-08 to #15-08

#02-12 to #15-12

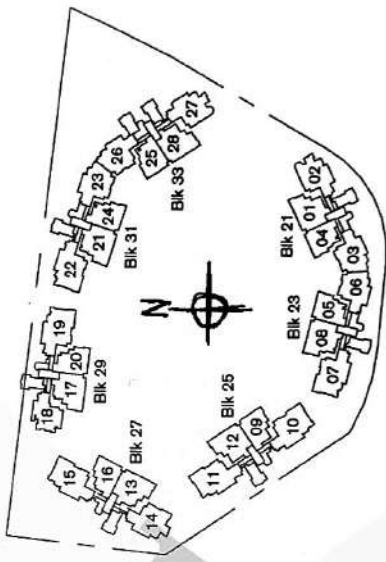
#02-13 to #15-13

#02-17 to #15-17

#02-21 to #15-21

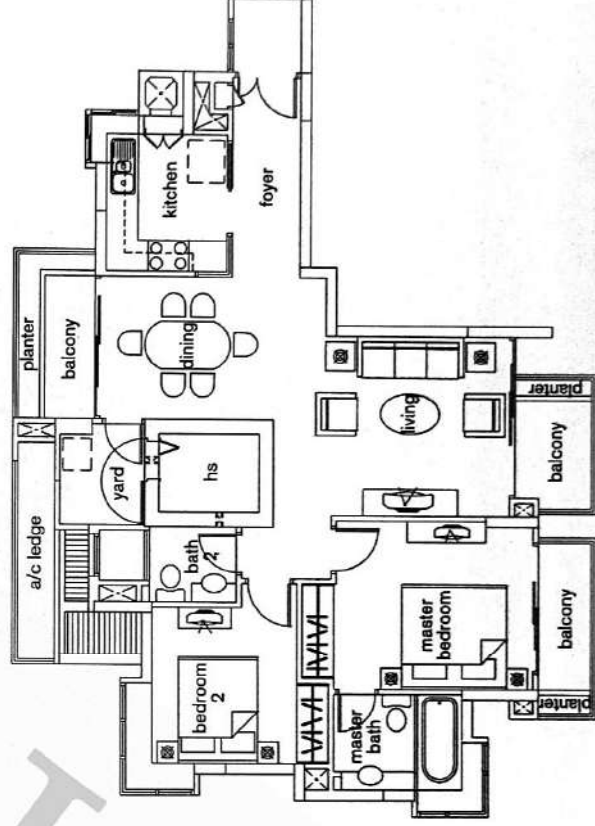
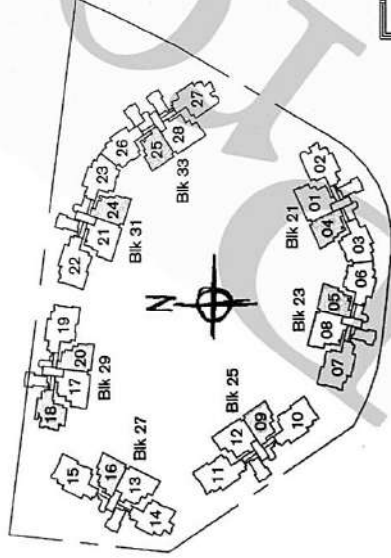
#04-28 to #14-28

living / dining - 37.9 sq m / 408 sq ft  
master bedroom - 15.6 sq m / 168 sq ft  
bedroom 2 - 11.5 sq m / 124 sq ft  
bedroom 3 - 11.4 sq m / 123 sq ft



# type A2

2-bedroom + study / 2-bedroom apartment



type A2 [ 103 sq m / 1,109 sq ft ]

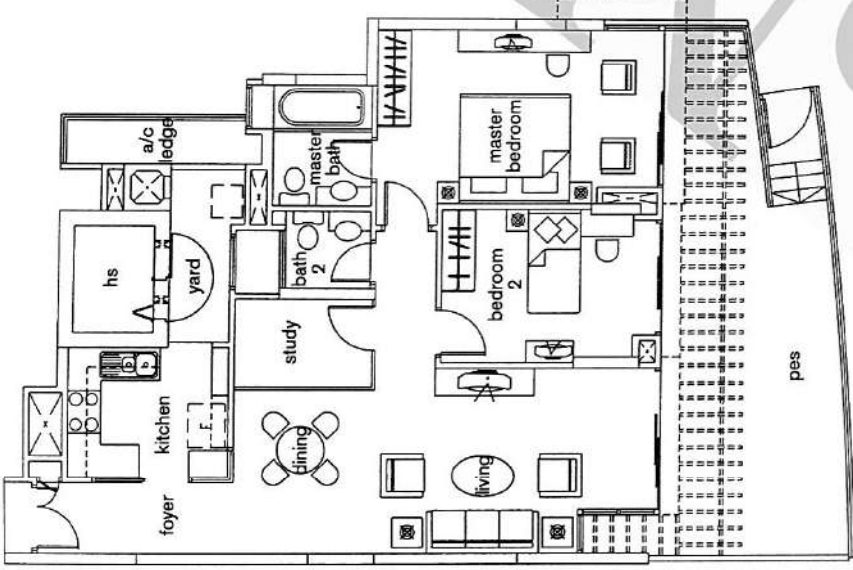
#02-18 to #15-18

- living / dining - 35.0 sq m / 377 sq ft
- master bedroom - 13.9 sq m / 150 sq ft
- bedroom 2 - 12.0 sq m / 129 sq ft

Area includes PES, A/C ledge, bay windows, planter, roof terrace, balcony and void. Some units are a mirror image of the apartment plans shown in the brochure. Please refer to the key plan for orientation. All plans are not to scale and are subject to change as may be approved by the relevant authorities. All floor areas are approximate only and are subject to government resurvey.

# type A1p

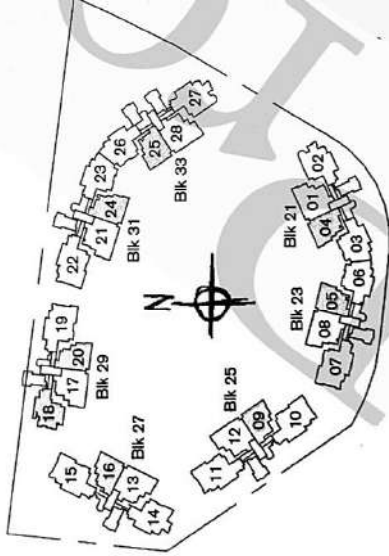
2-bedroom + study / 2-bedroom apartment



type A1p [ 127 sq m / 1,367 sq ft ]

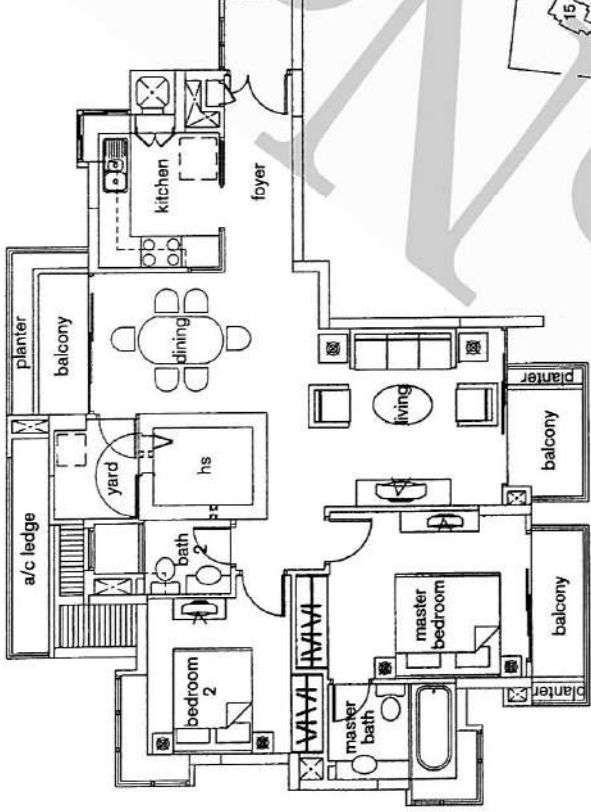
- #01-04
- #01-05
- #01-09
- #01-16
- #01-20
- #01-24
- #01-25

living / dining - 33.8 sq m / 364 sq ft  
 master bedroom - 17.6 sq m / 190 sq ft  
 bedroom 2 - 11.2 sq m / 121 sq ft



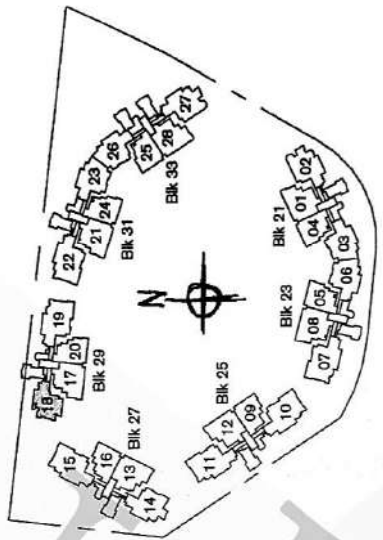
# type A2a

2-bedroom apartment



type A2a [ 103 sq m / 1,109 sq ft ]  
#16-18

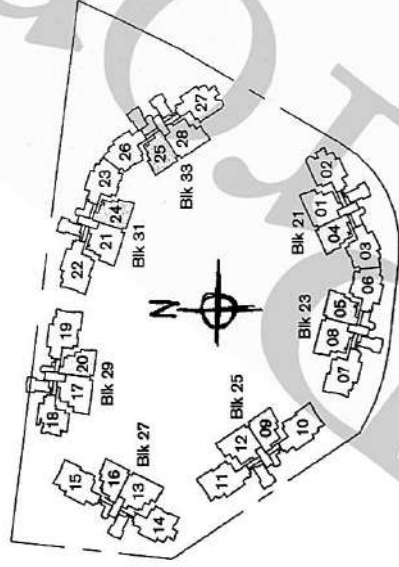
- living / dining - 35.0 sq m / 377 sq ft
- master bedroom - 13.9 sq m / 150 sq ft
- bedroom 2 - 12.0 sq m / 129 sq ft



Area includes PES, A/C ledge, bay windows, planter, roof terrace, balcony and void. Some units are a mirror image of the apartment plans shown in the brochure. Please refer to the key plan for orientation. All plans are not to scale and are subject to change as may be approved by the relevant authorities. All floor areas are approximate only and are subject to government resurvey.

# type A1a

2-bedroom apartment + study



type A1a [ 99 sq m / 1,066 sq ft ]

- #15-04
- #16-05
- #18-09
- #16-16
- #16-20
- #16-24
- #15-25

living / dining - 30.3 sq m / 326 sq ft  
master bedroom - 14.2 sq m / 153 sq ft  
bedroom 2 - 11.2 sq m / 121 sq ft

