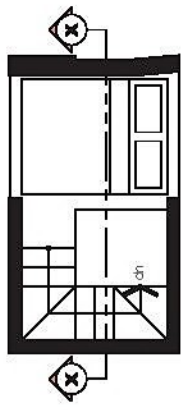
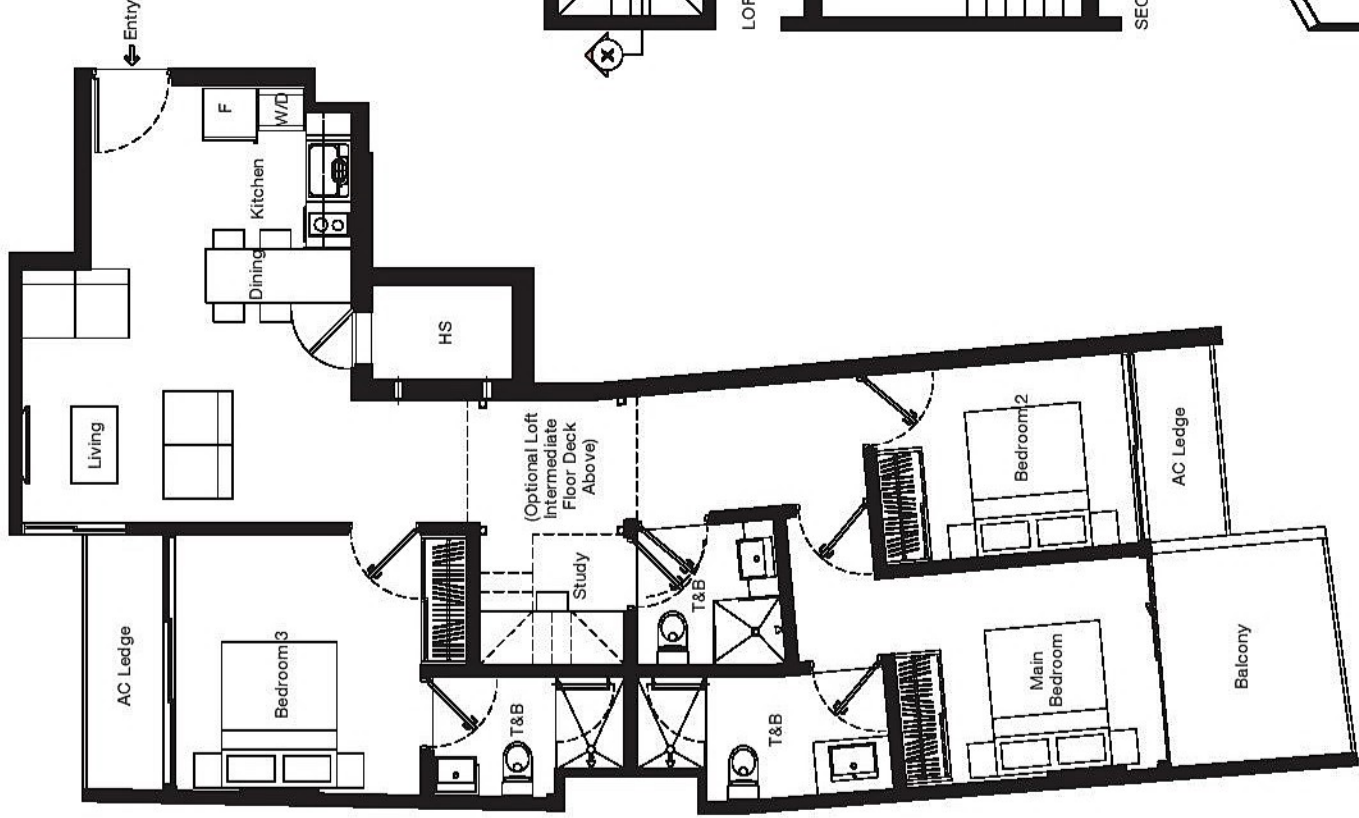


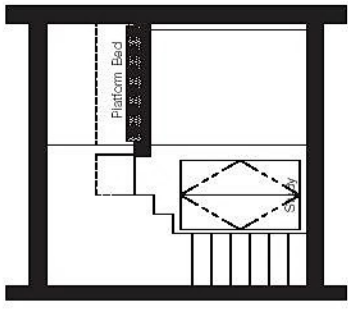
# TYPE B1

3 bedroom  
106 sqm / 1141 sqft

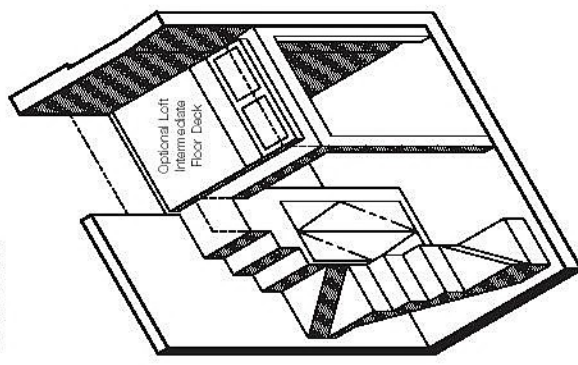
#03-02  
(inclusive of balcony, AC ledges)



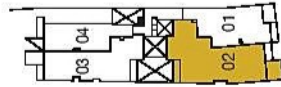
LOFT PLAN



SECTION X-X



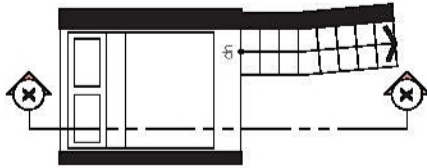
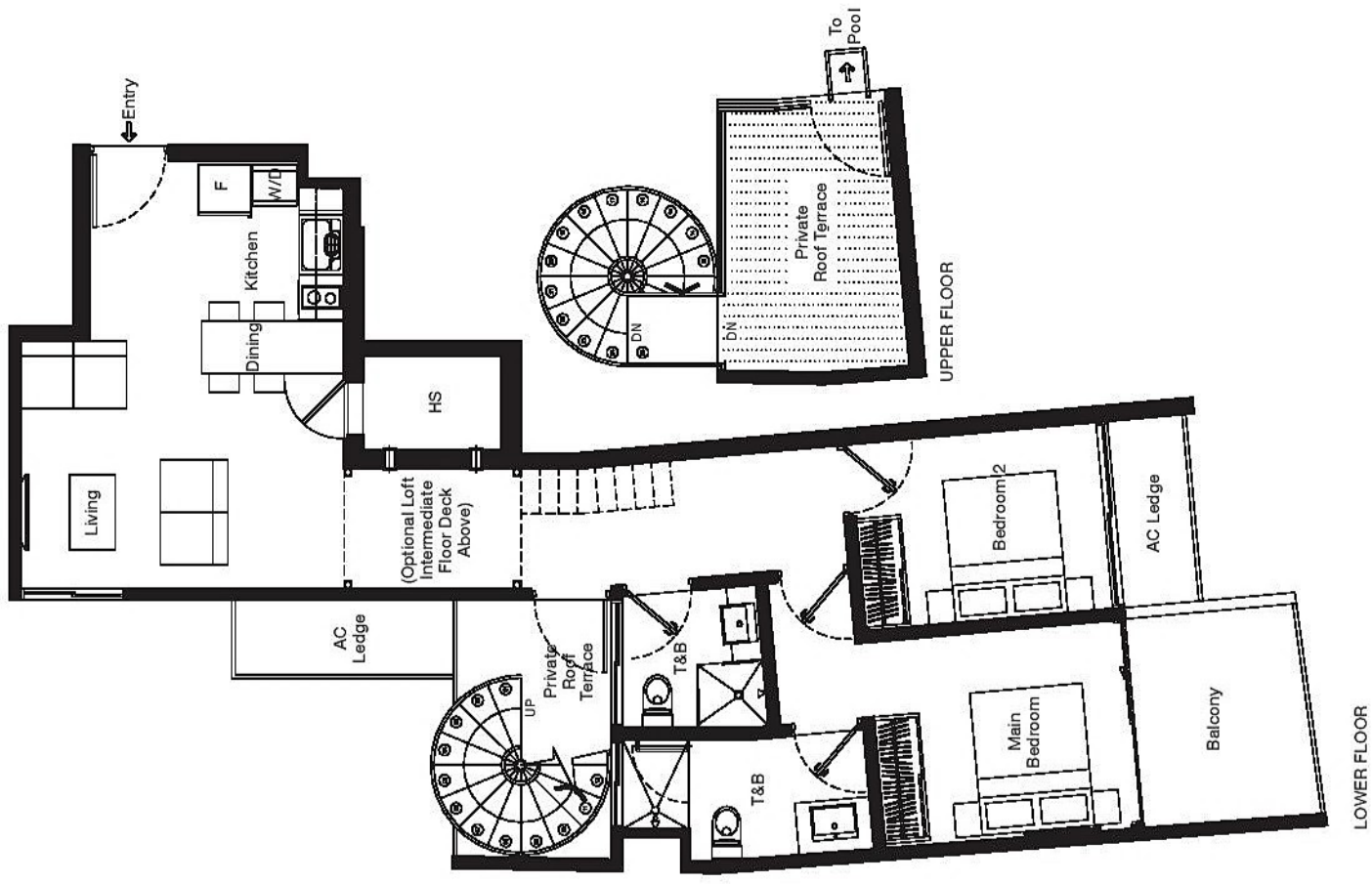
ISOMETRIC VIEW  
Floor To Floor Height: 3600mm



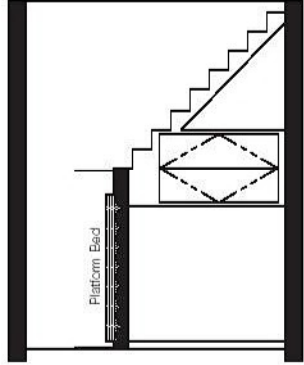
# TYPE B4

2 bedroom  
102 sqm / 1098 sqft

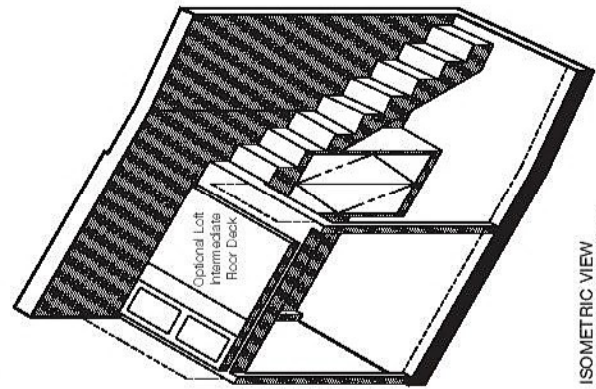
#06-02  
(inclusive of balcony,  
Private Roof Terrace, AC ledge)



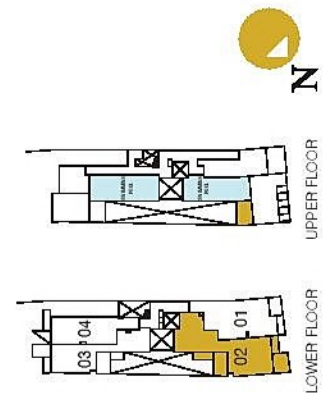
LOFT PLAN



SECTION X-X



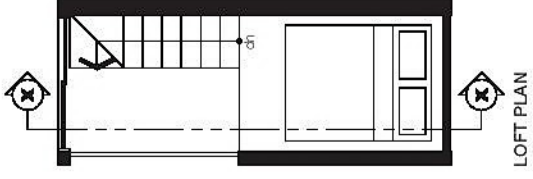
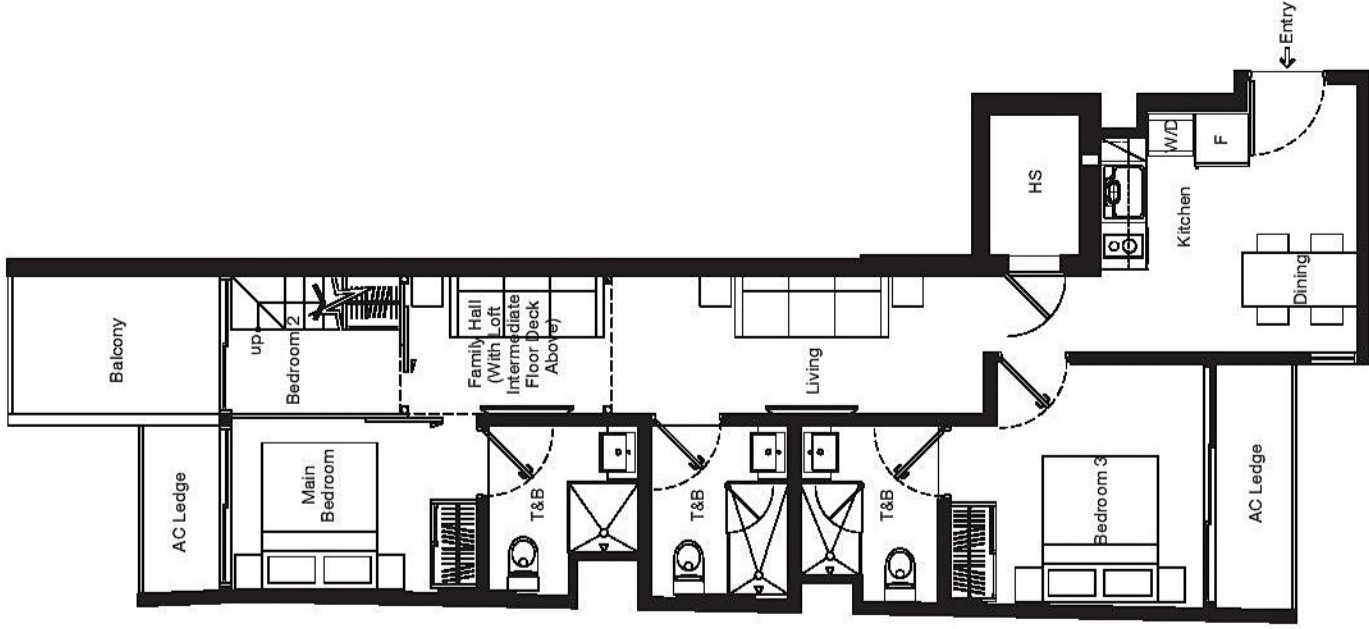
ISOMETRIC VIEW  
Floor To Floor Height: 3600mm



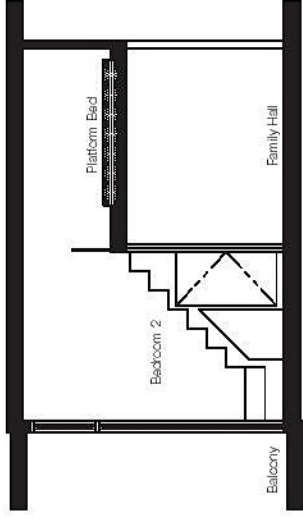
# TYPE C

3 bedroom  
81 sqm / 872 sqft

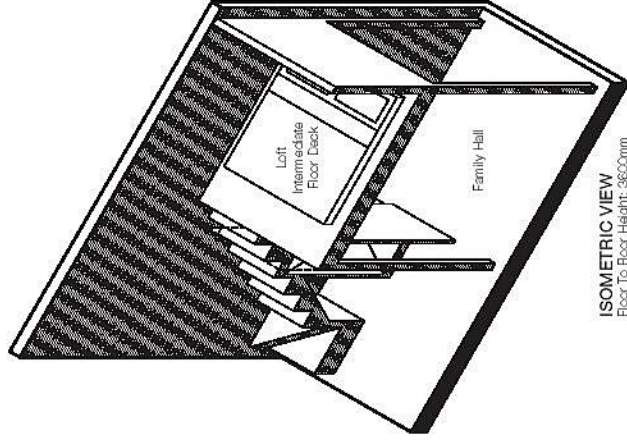
#CG-03  
(inclusive of balcony, AC ledge)



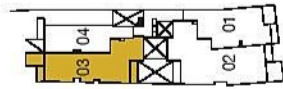
LOFT PLAN



SECTION X-X



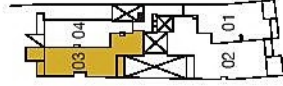
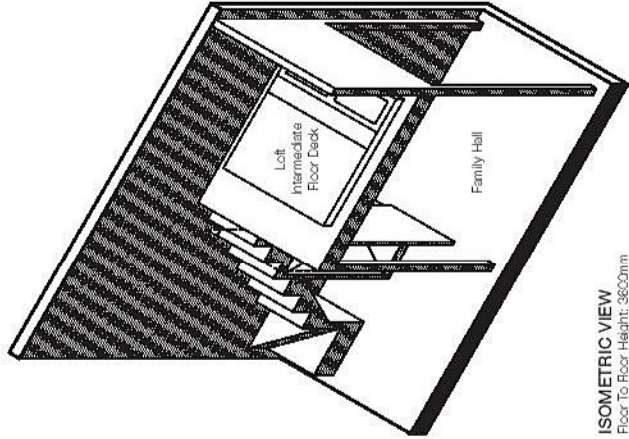
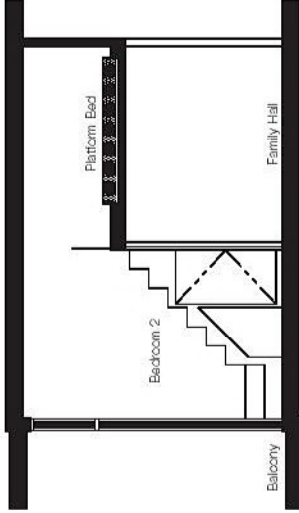
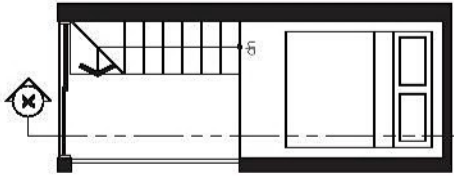
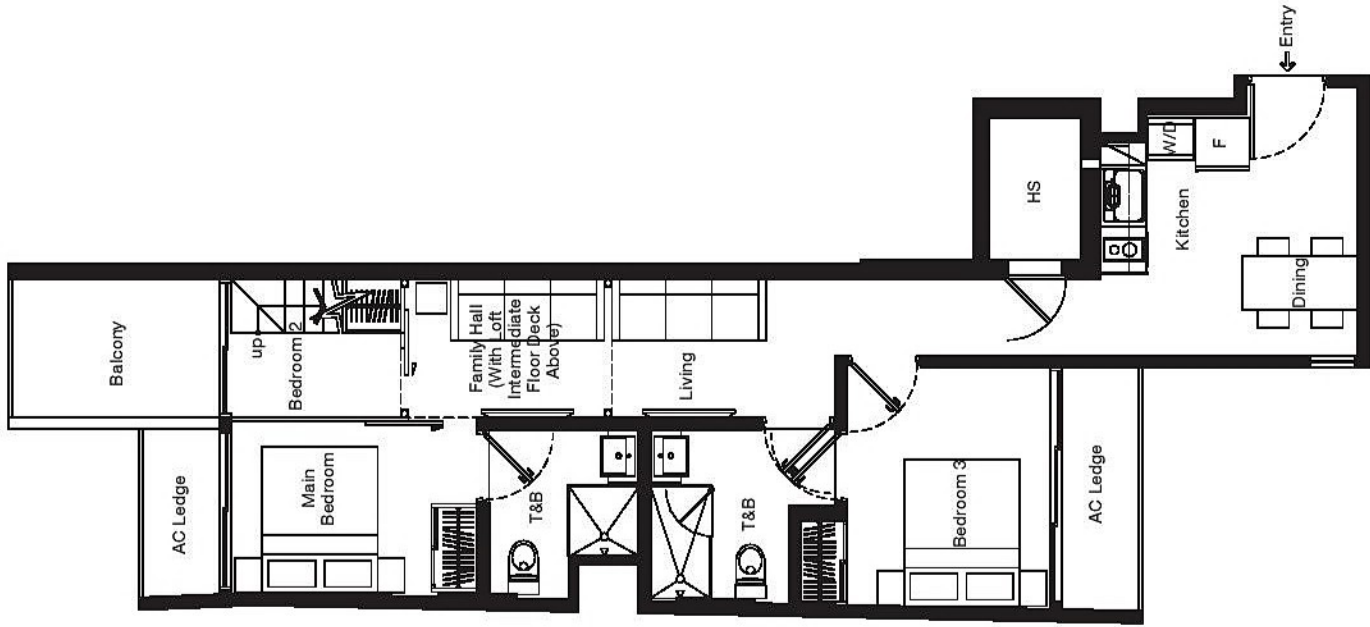
ISOMETRIC VIEW  
Floor To-Roof Height: 3600mm



# TYPE C1

3 bedroom  
74 sqm / 797 sqft

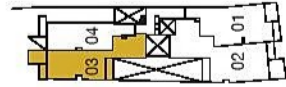
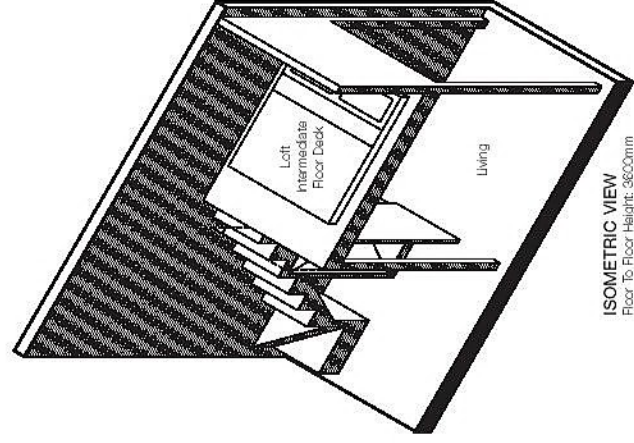
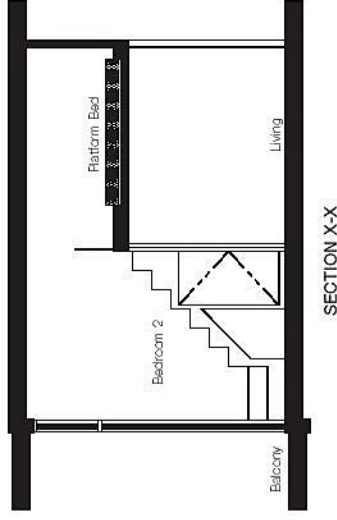
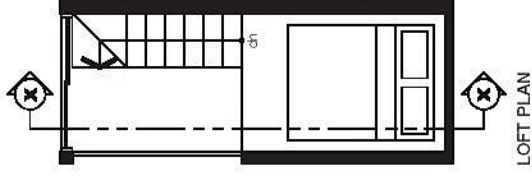
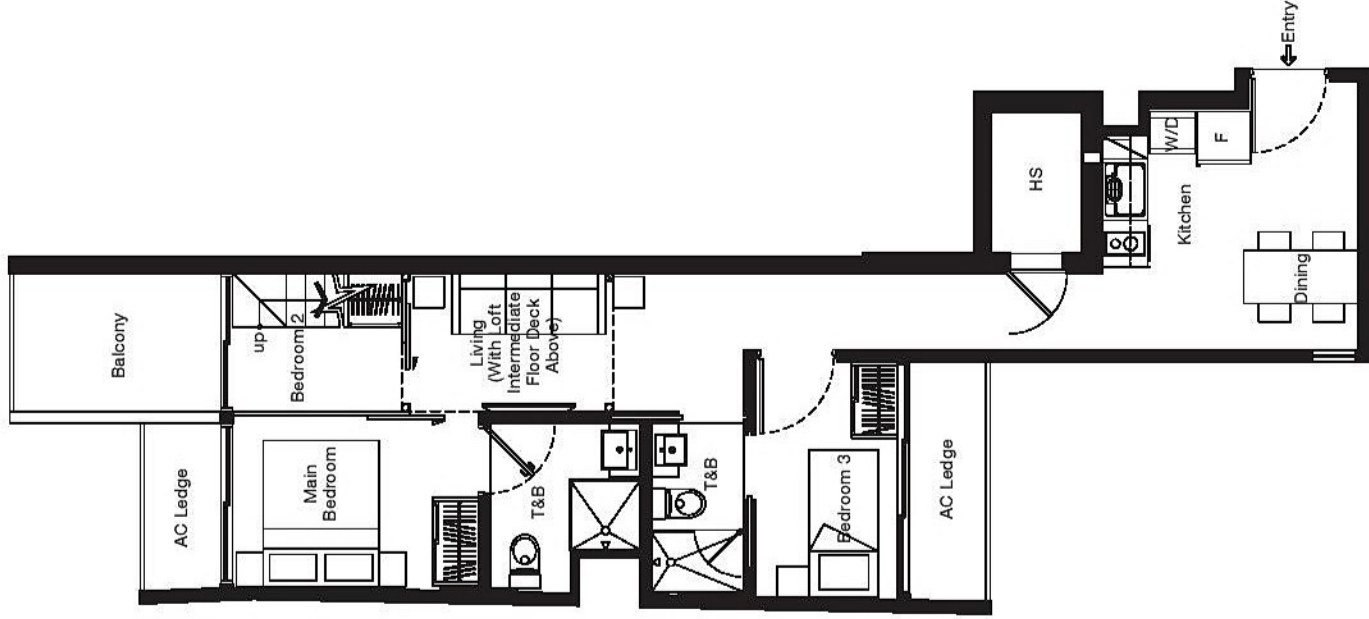
#C4-C3  
(inclusive of balcony, AC ledge)



# TYPE C2

3 bedroom  
68 sqm / 732 sqft

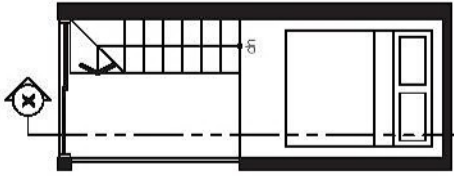
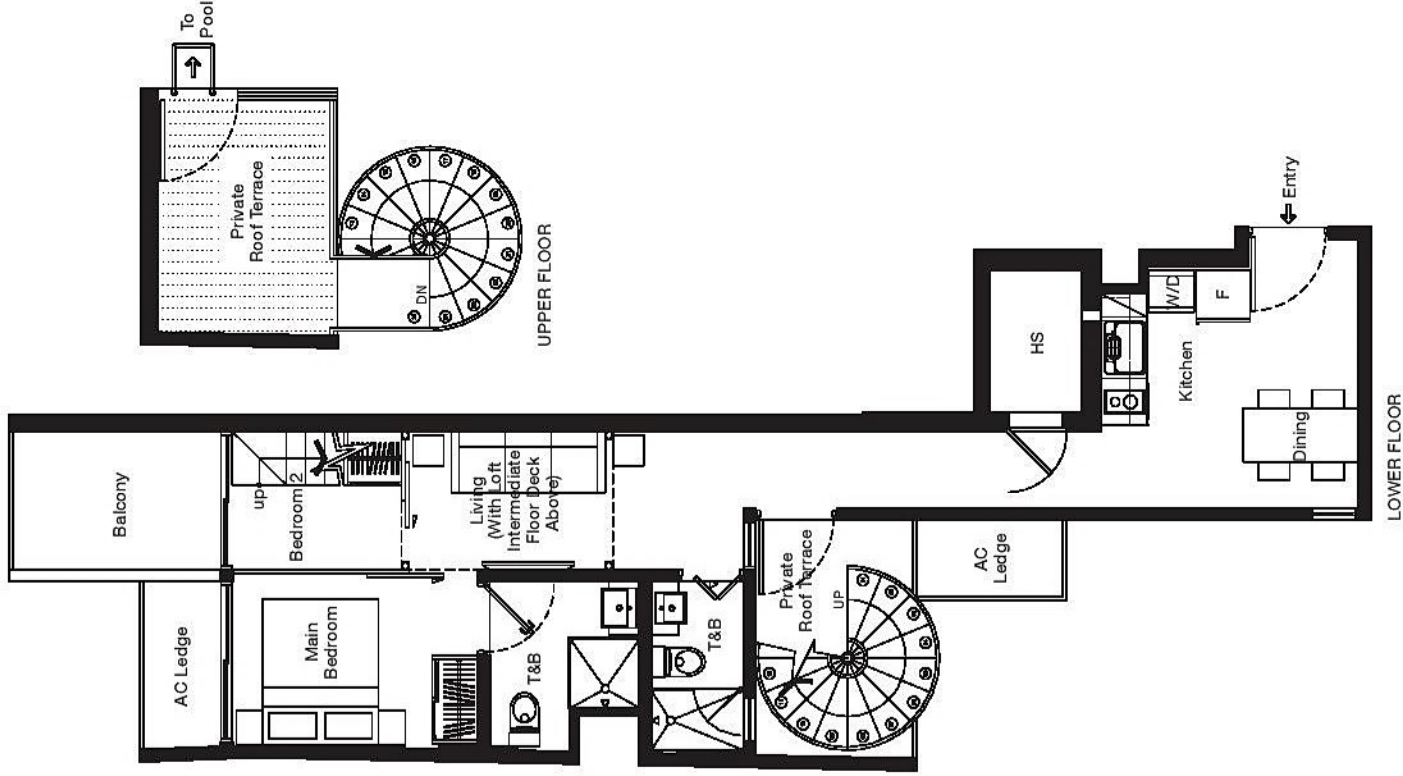
#05-03  
(inclusive of balcony, AC ledge)



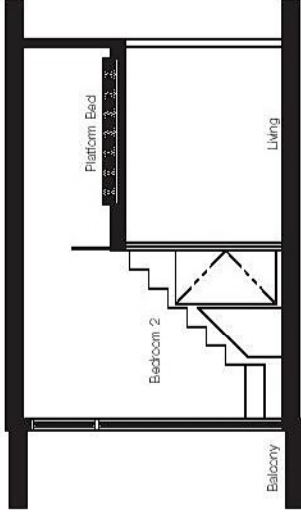
# TYPE C3

2 bedroom  
76 sqm / 818 sqft

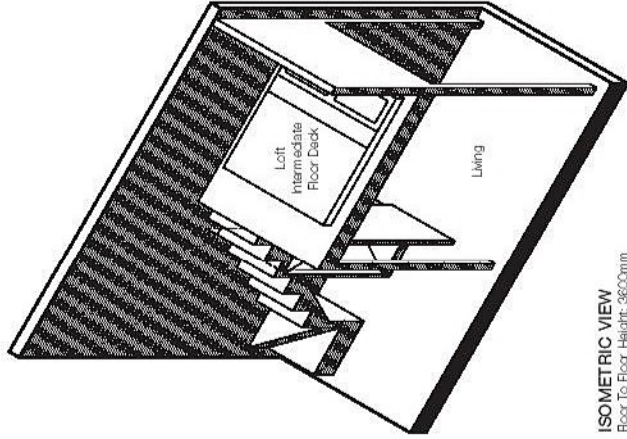
#06-03  
(inclusive of balcony, Pile Roof Terrace, AC ledge)



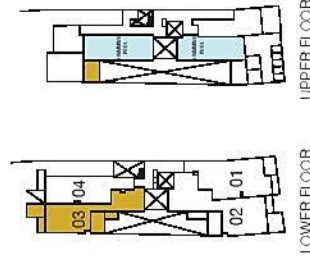
LOFT PLAN



SECTION X-X



ISOMETRIC VIEW  
Floor To Floor Height: 3600mm



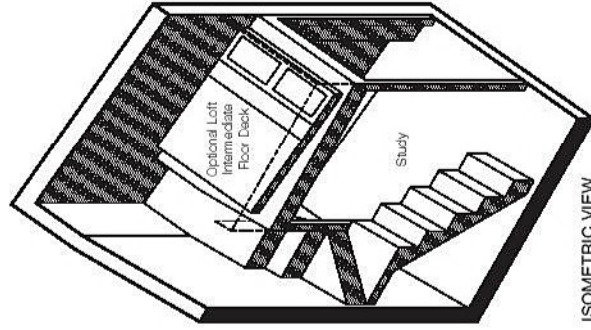
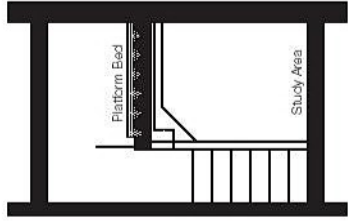
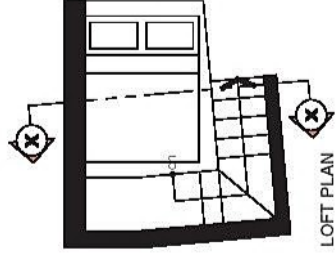
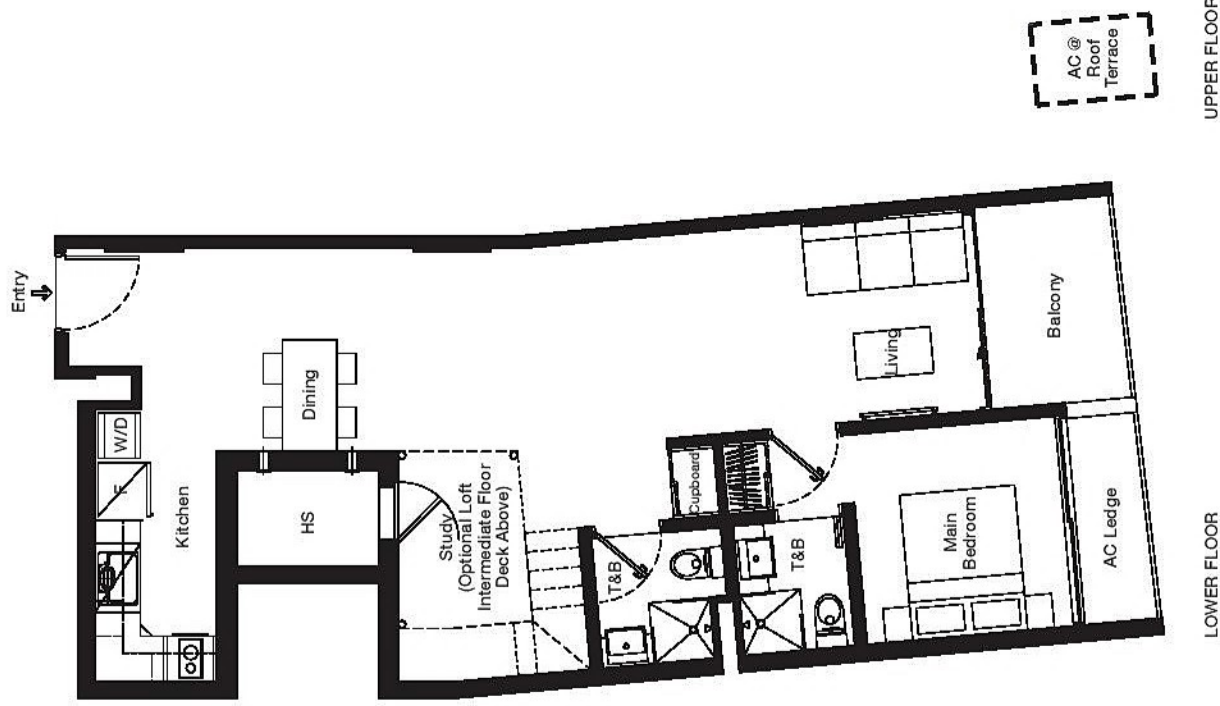
UPPER FLOOR

LOWER FLOOR

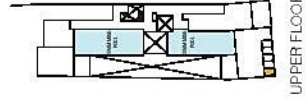
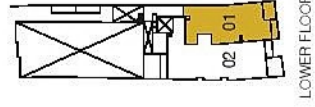
# TYPE A

1 + 1 bedroom  
79 sqm / 850 sqft

#02-01  
(inclusive of balcony, AC ledge)



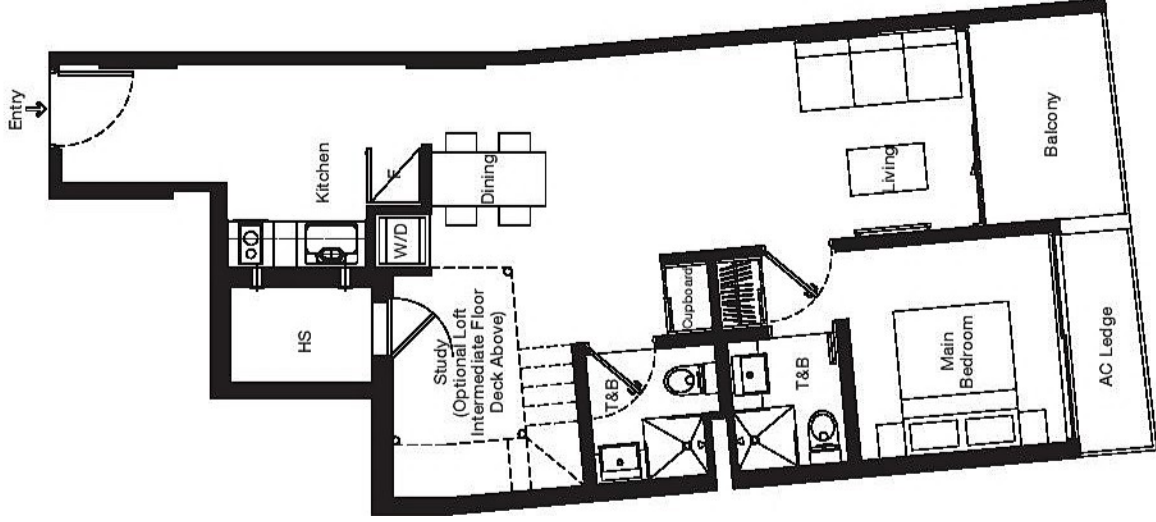
ISOMETRIC VIEW  
Floor To Floor Height: 3600mm



# TYPE A1

1 + 1 bedroom  
71 sqm / 764 sqft

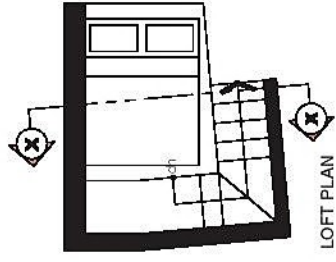
- #03-01
- #04-01
- #05-01
- #06-01  
(Inclusive of balcony, AC ledge)



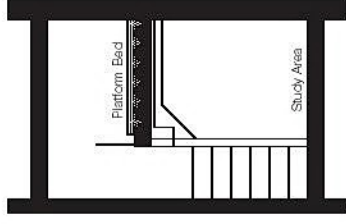
LOWER FLOOR



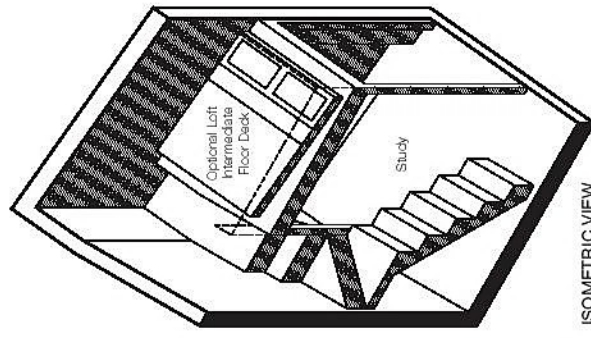
UPPER FLOOR



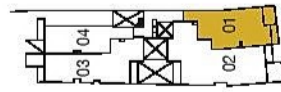
LOFT PLAN



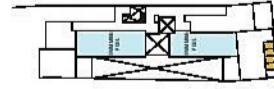
SECTION X-X



ISOMETRIC VIEW  
Roor To Roor Height: 3600mm



LOWER FLOOR



UPPER FLOOR

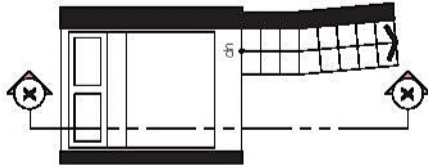
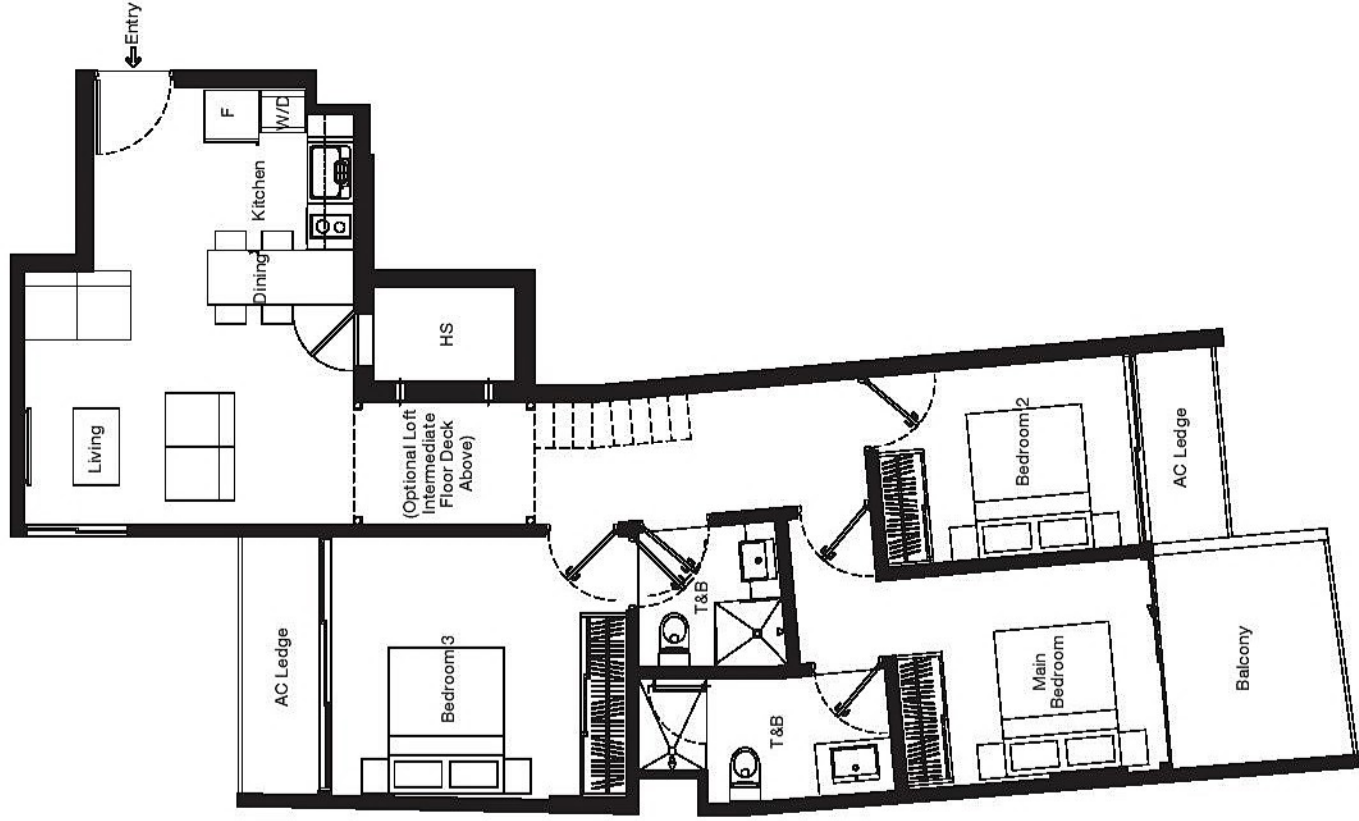




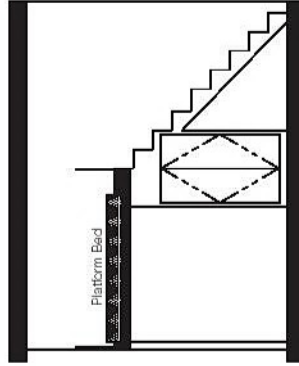
# TYPE B2

3 bedroom  
99 sqm / 1066 sqft

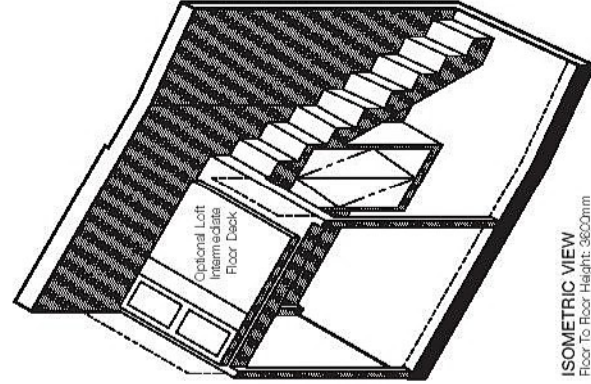
#04-02  
(inclusive of balcony, AC ledge)



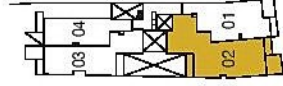
LOFT PLAN



SECTION X-X



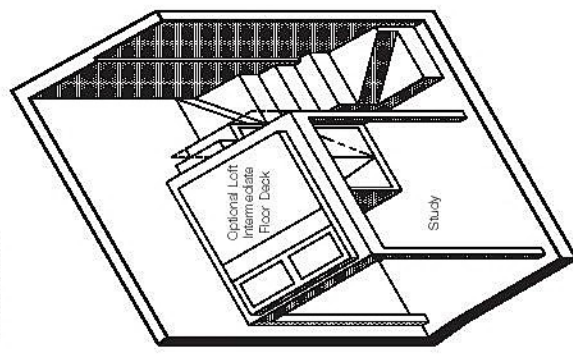
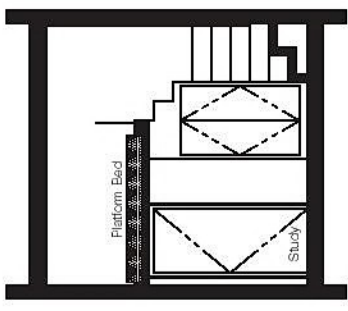
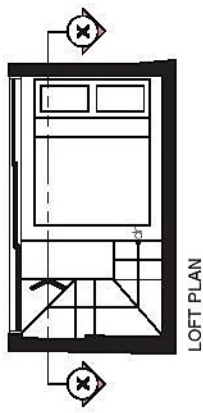
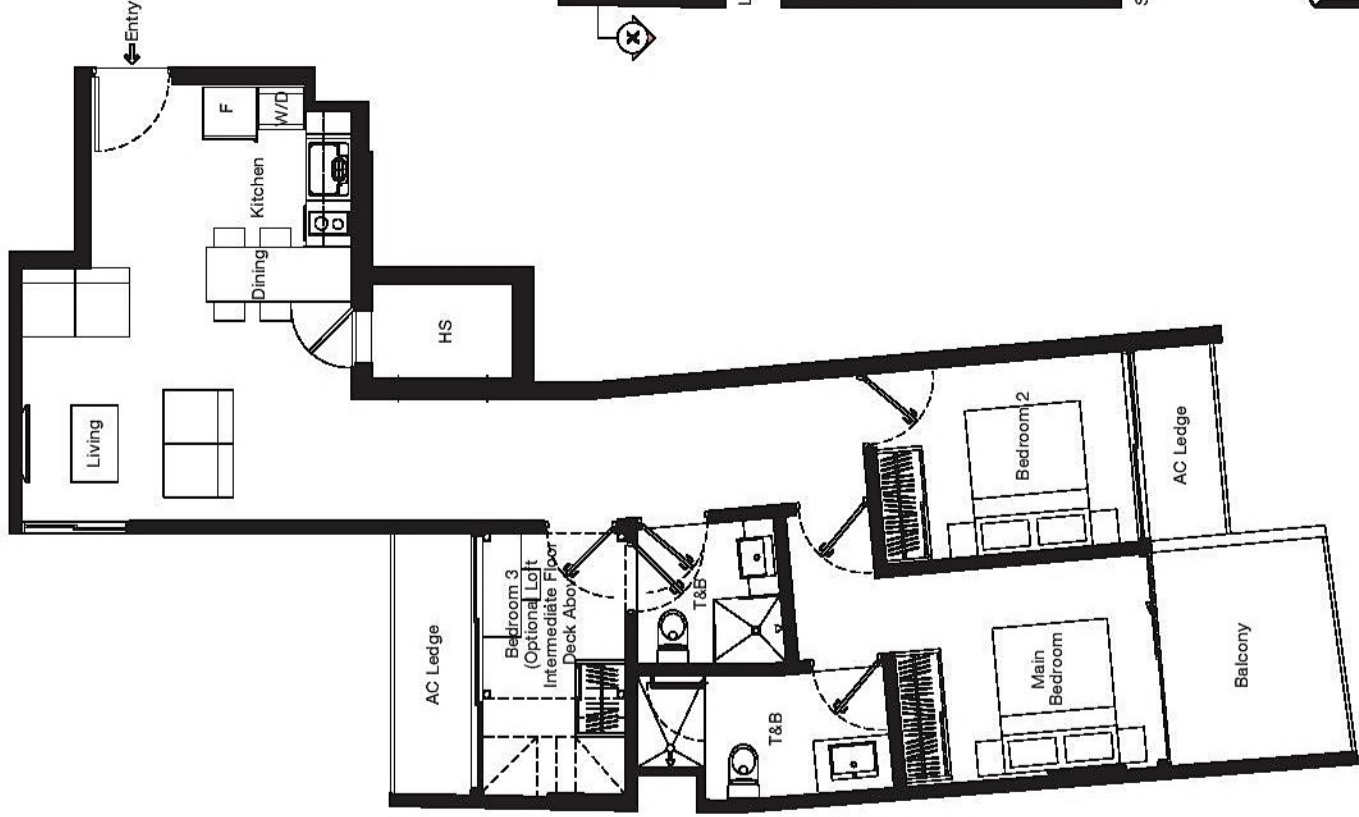
ISOMETRIC VIEW  
Floor To Floor Height: 3600mm



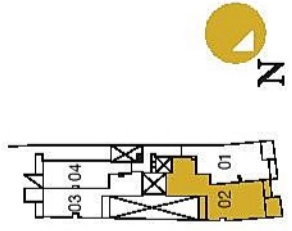
# TYPE B3

2 + 1 bedroom  
92 sqm / 990 sqft

#05-02  
(inclusive of balcony, AC ledge)



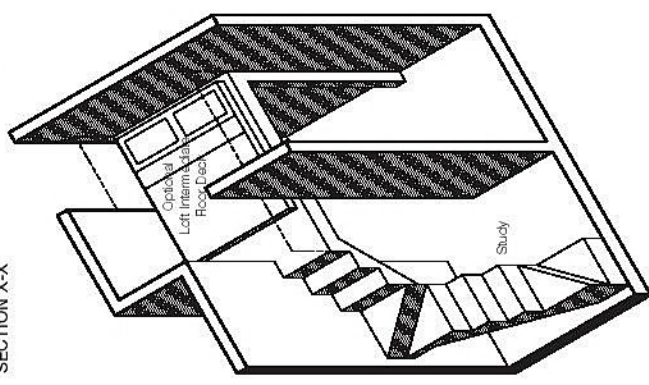
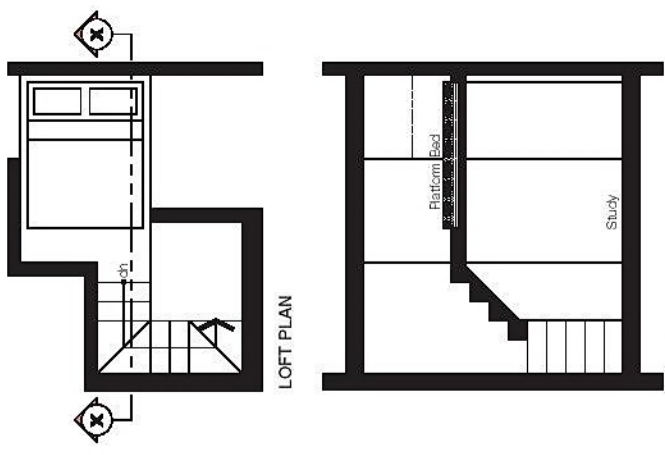
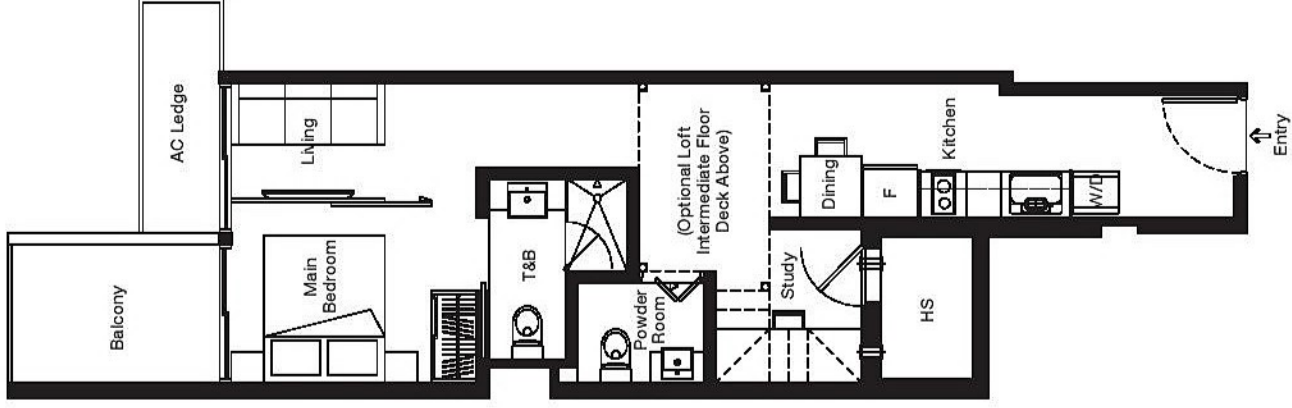
ISOMETRIC VIEW  
Floor To Floor Height: 3600mm



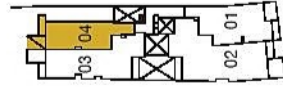
# TYPE D

1 + 1 bedroom  
55 sqm / 592 sqft

- #03-04
  - #04-04
  - #05-04
  - #06-04
- (inclusive of balcony, AC ledge)



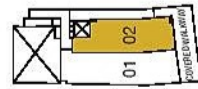
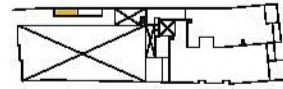
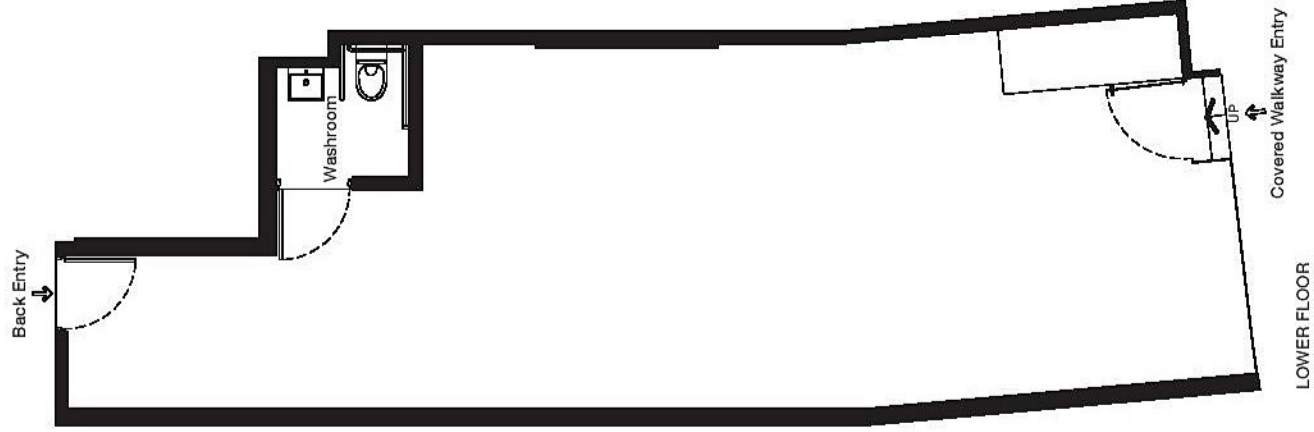
ISOMETRIC VIEW  
Floor To Floor Height: 3600mm



# SH 02

72 sqm / 775 sqft

#01-02  
(inclusive of AC ledge)



# SH 01

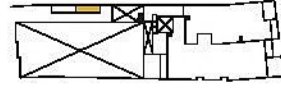
90 sqm / 969 sqft.

#01-01  
(inclusive of AC/ceiling)

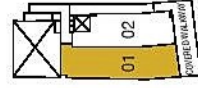
## COMMERCIAL



UPPER FLOOR



UPPER FLOOR



LOWER FLOOR

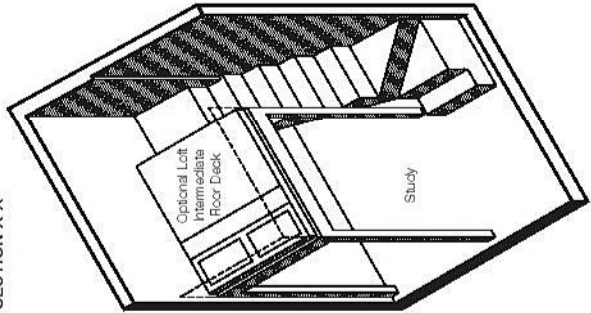
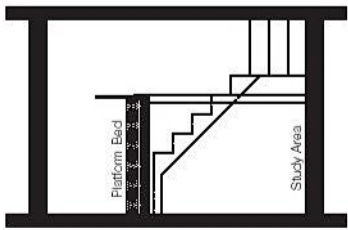
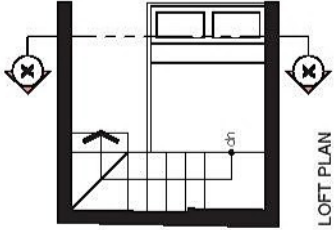
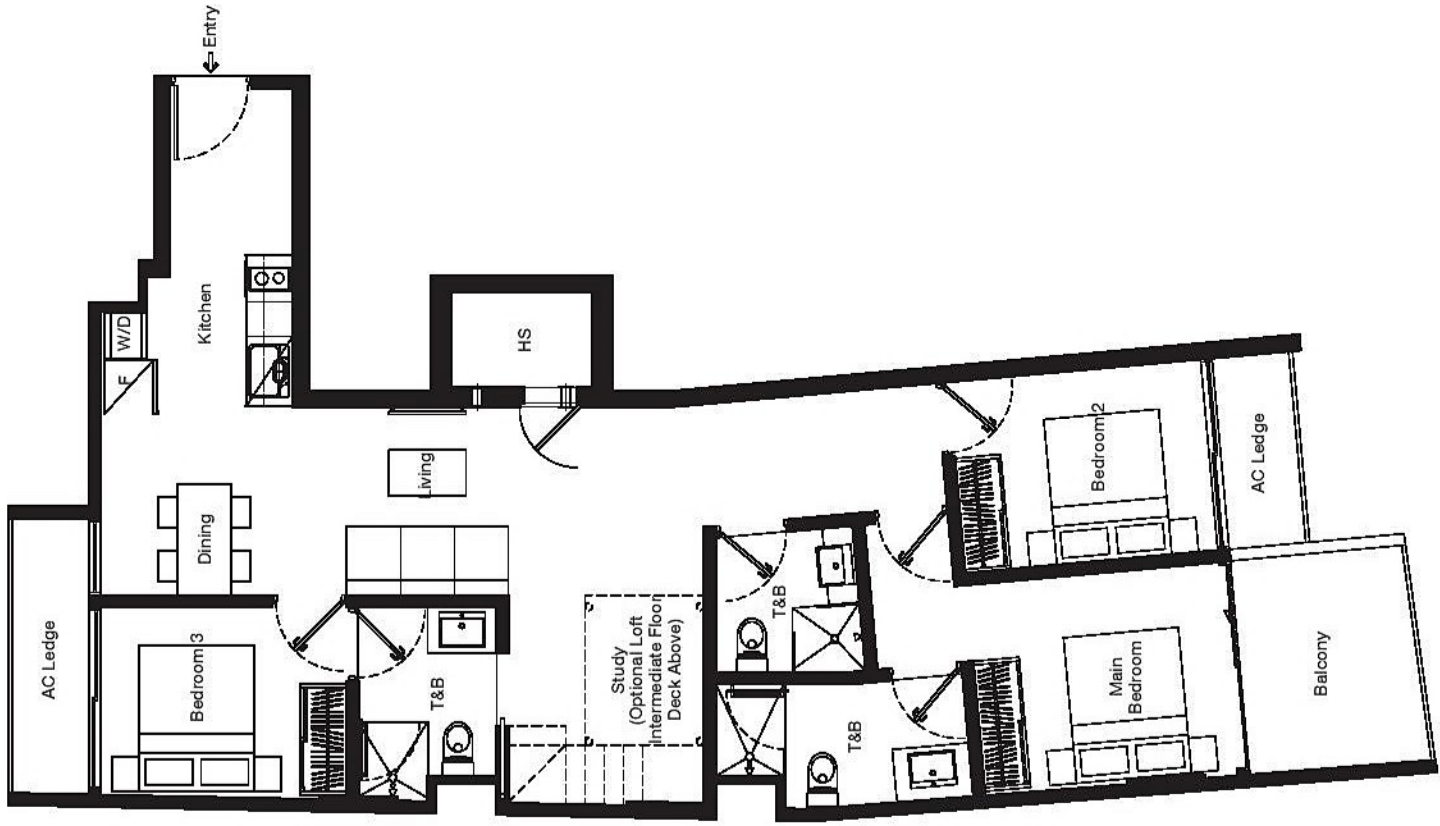




# TYPE B

3 + 1 bedroom  
106 sqm / 1141 sqft

#02-02  
(inclusive of balcony, AC ledge)



ISOMETRIC VIEW  
Floor To Floor Height: 3600mm

