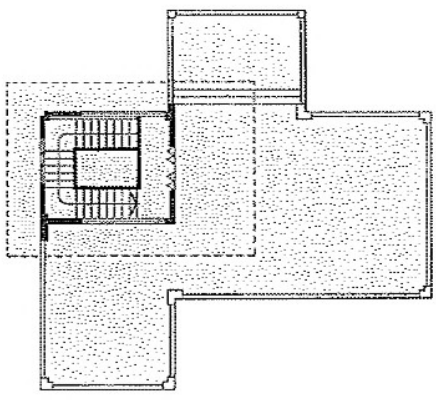


Area : 354 sq m
 (3,810 sq ft)
 Total Units : 1
 Bedrooms : 2
 (Area includes generous open balconies)

SECOND STOREY PLAN

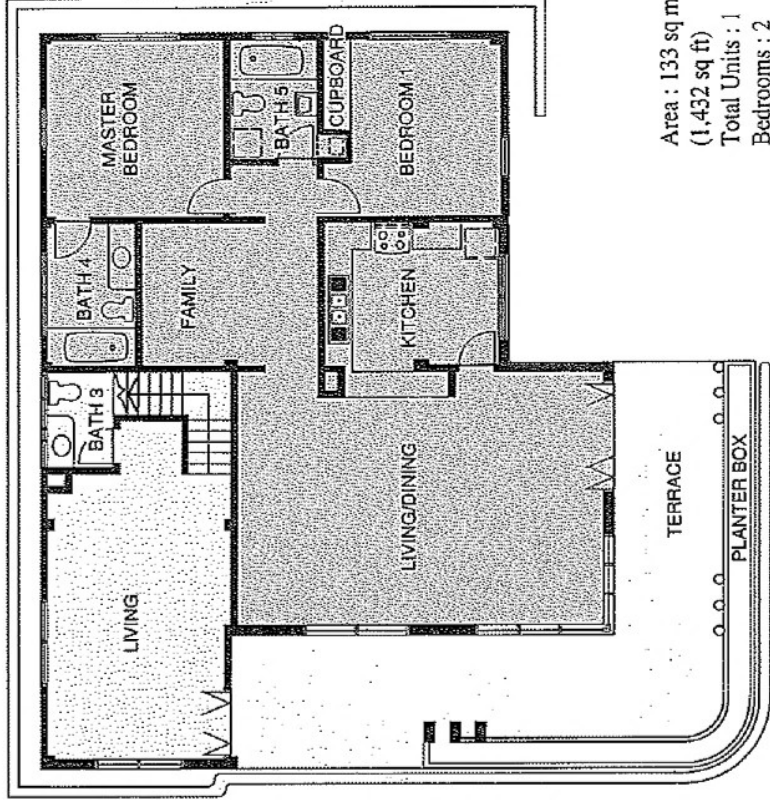
THIRD STOREY PLAN



LIVE IN A BUNGALOW IN RIVER VALLEY ROAD!

The original bungalow on this valuable site is being voluntarily conserved, upgraded and subdivided into two exclusive residential units, providing an opportunity to live in the style of yesteryear.

The two units are entirely self-contained but from the outside, they appear as one.

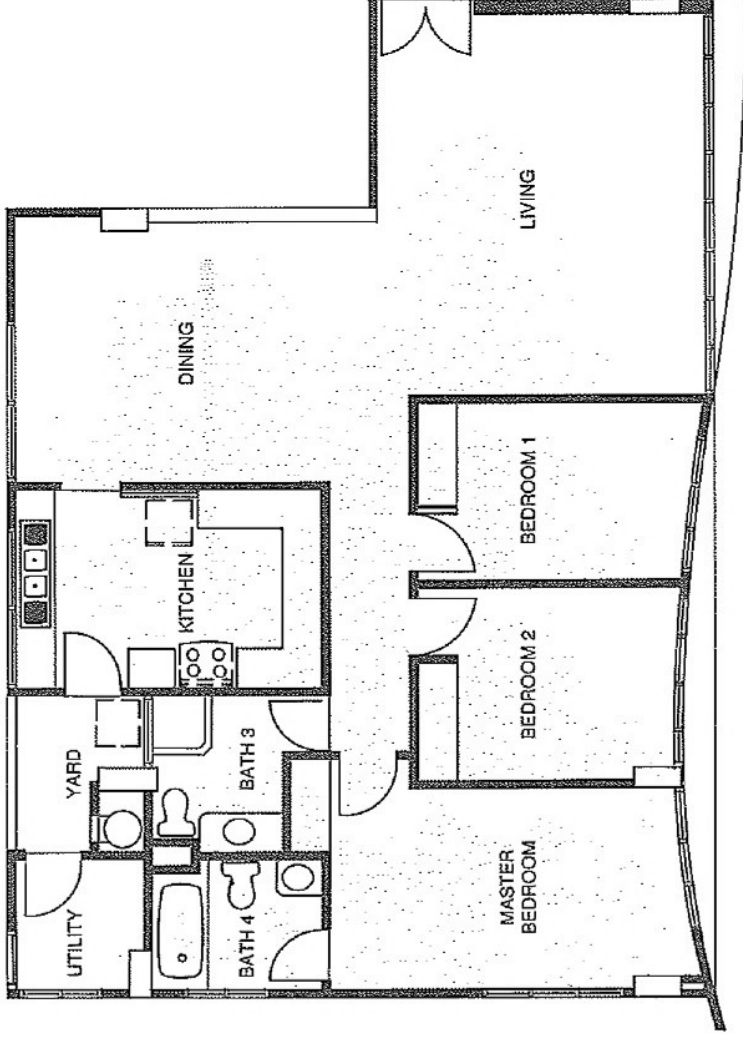
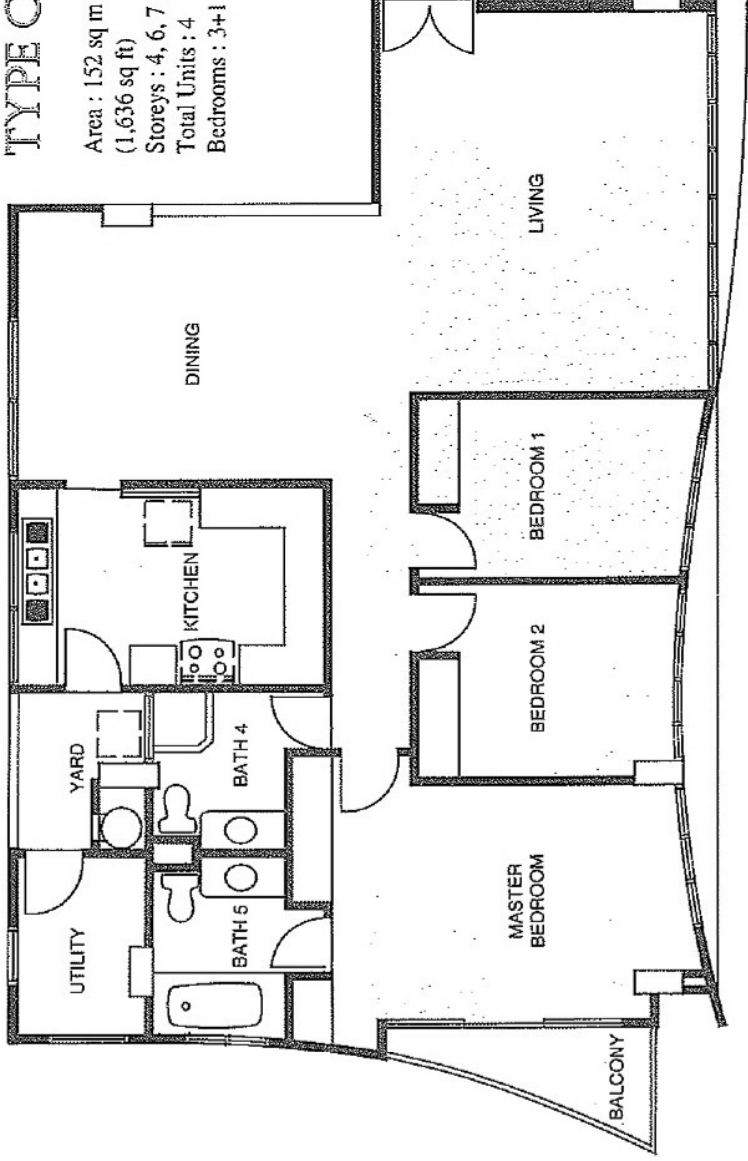


Area : 133 sq m
 (1,432 sq ft)
 Total Units : 1
 Bedrooms : 2

FIRST STOREY PLAN

TYPE C

Area : 152 sq m
(1,636 sq ft)
Storeys : 4, 6, 7 & 9
Total Units : 4
Bedrooms : 3+1



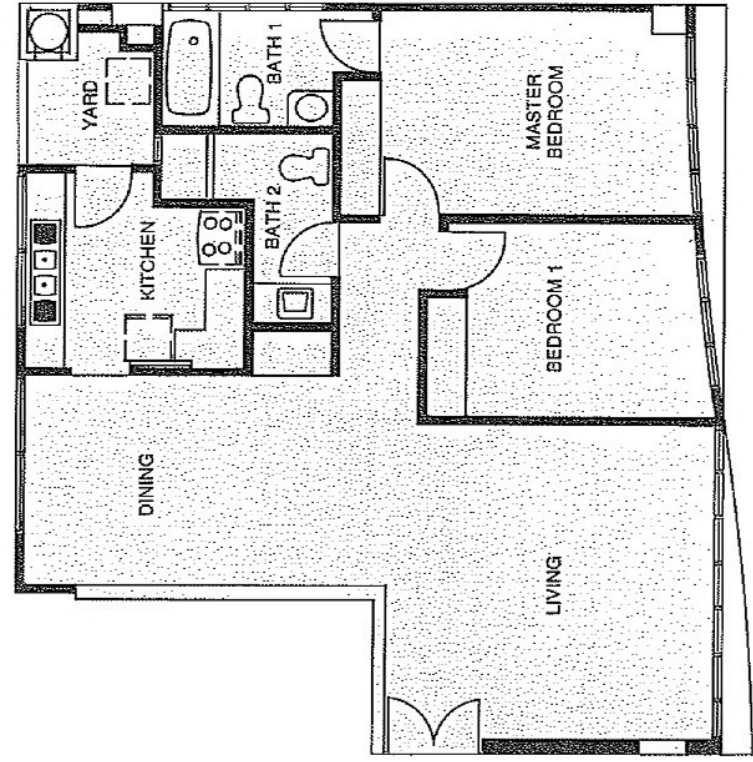
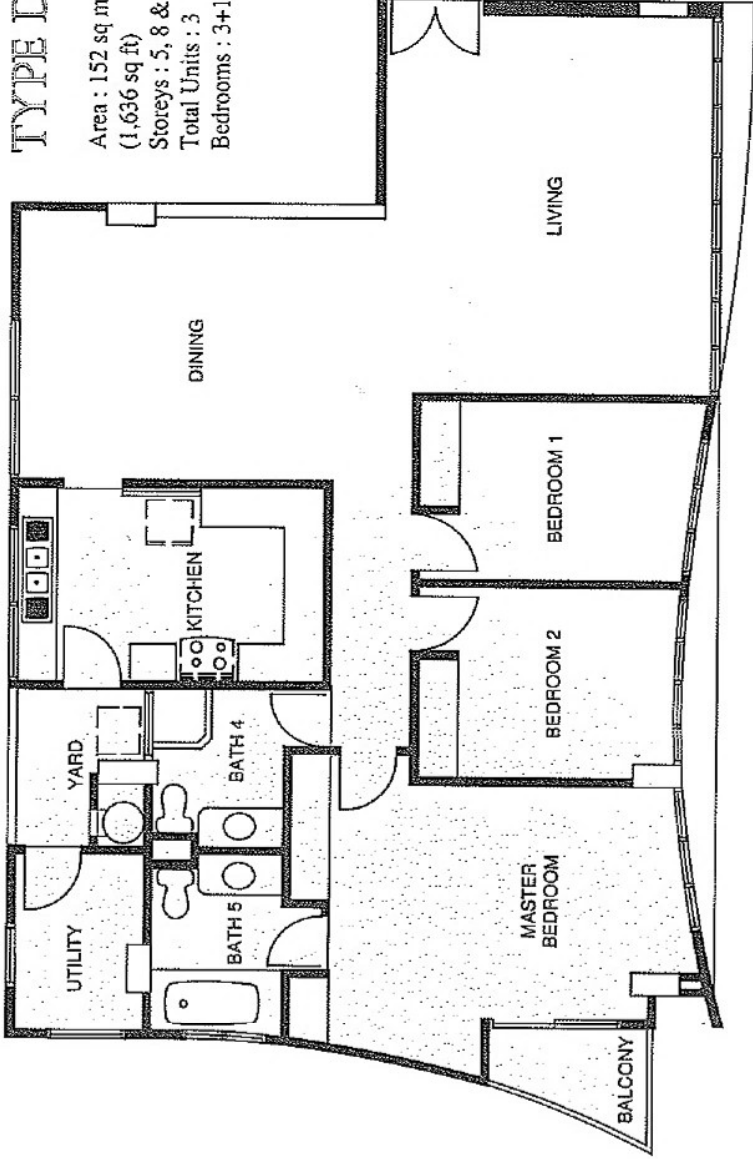
TYPE B

Area : 139 sq m
(1,496 sq ft)
Storeys : 2 & 3
Total Units : 2
Bedrooms : 3+1

ALL AREAS ARE APPROXIMAT

TYPE D

Area : 152 sq m
 (1,636 sq ft)
 Storeys : 5, 8 & 10
 Total Units : 3
 Bedrooms : 3+1



TYPE A

Area : 105 sq m
 (1,130 sq ft)
 Storeys : 2, 3, 4, 5,
 6, 7, 8, 9 & 10
 Total Units : 9
 Bedrooms : 2