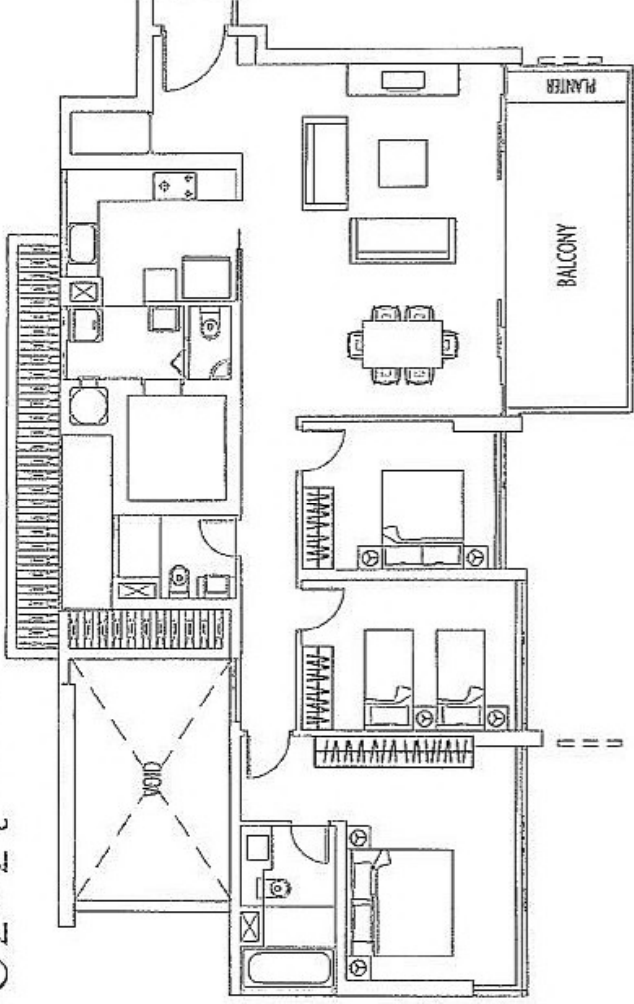
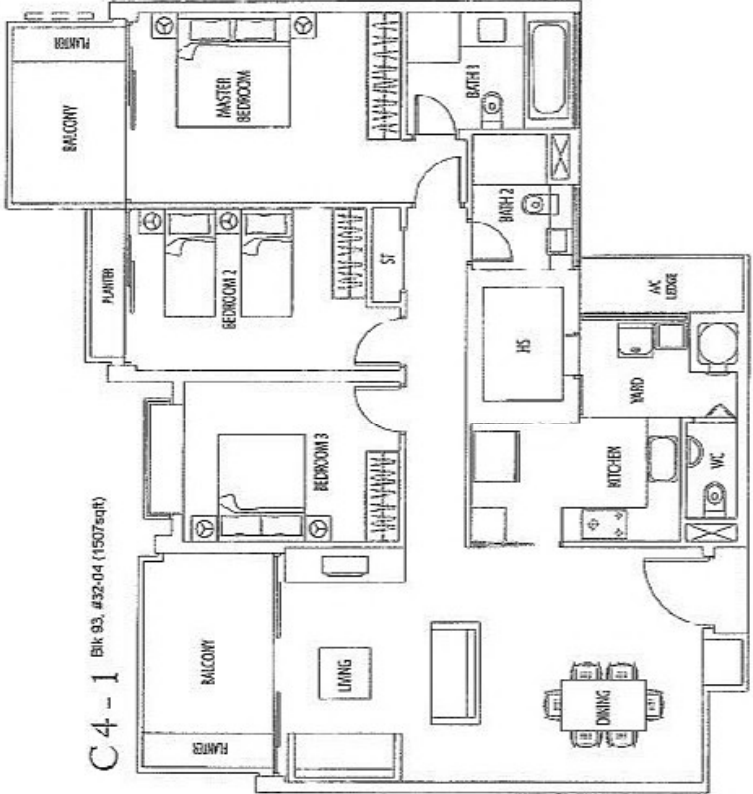


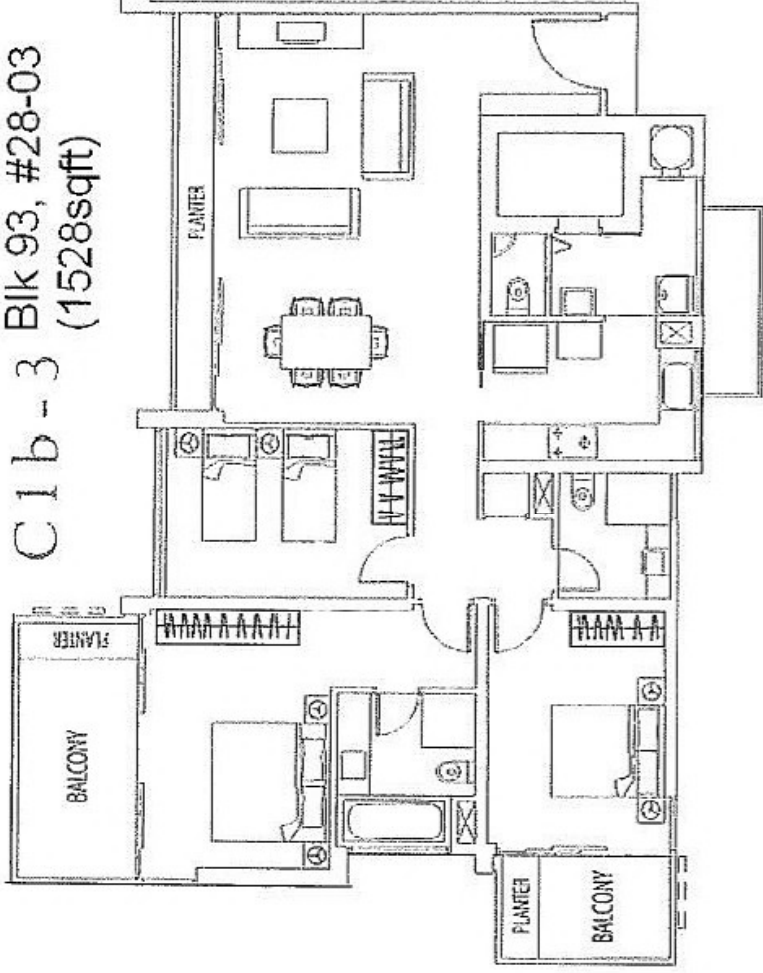
C2 - 2 t Bk 93, #32-02 (1539sqft)



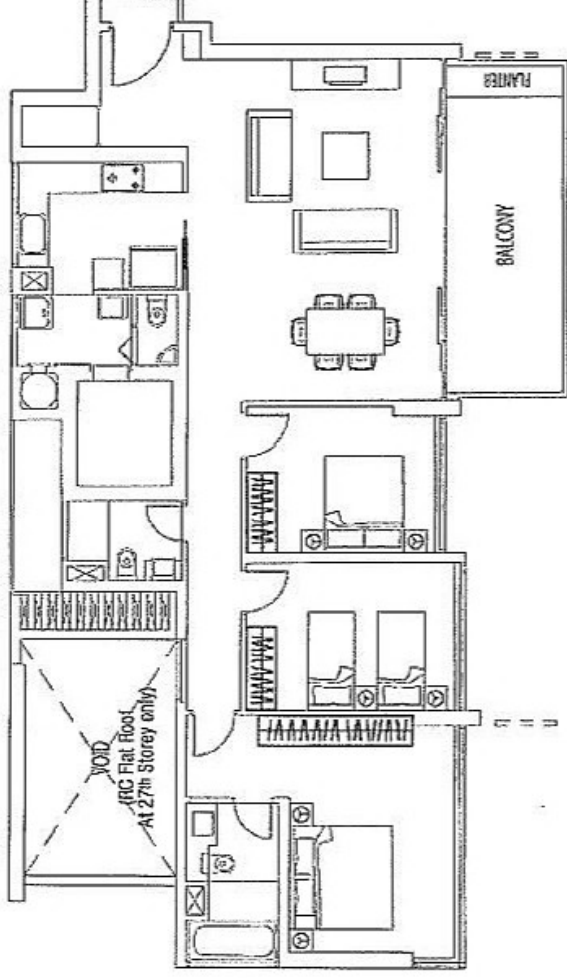
C4 - 1 Bk 93, #32-04 (1507sqft)



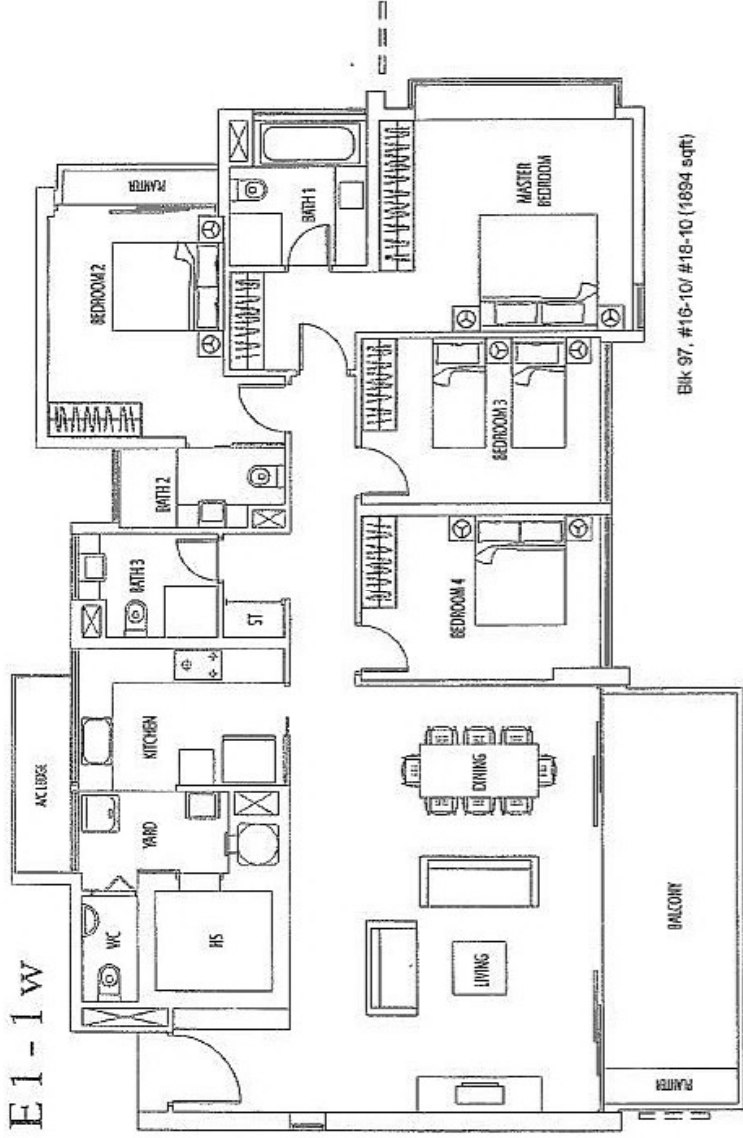
C1b - 3 BIK 93, #28-03  
(1528sqft)



C2 - 2 BIK 93, #28-02 (1539sqft)

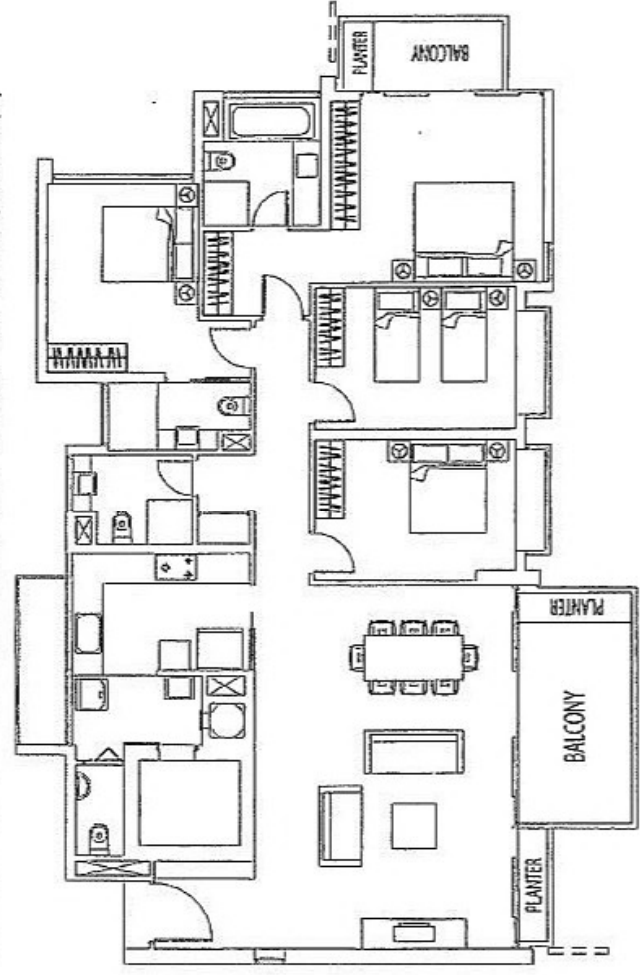


E1-1W



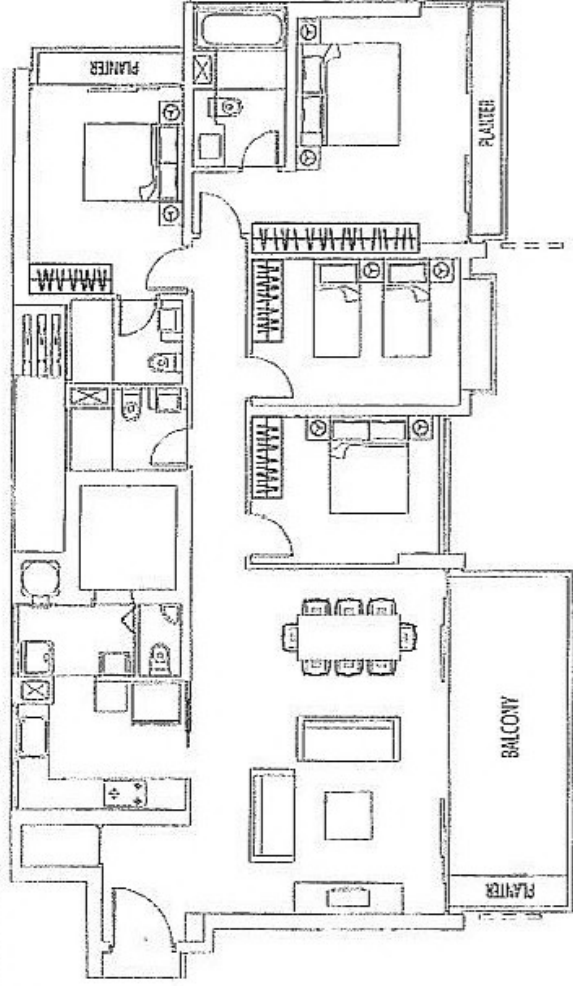
Blk 97, #16-10/ #18-10 (1894 sqft)

E1 - 2 W Blk 97, #32-10/ #30-10/ #20-10/ 12-10 (1884sqft)

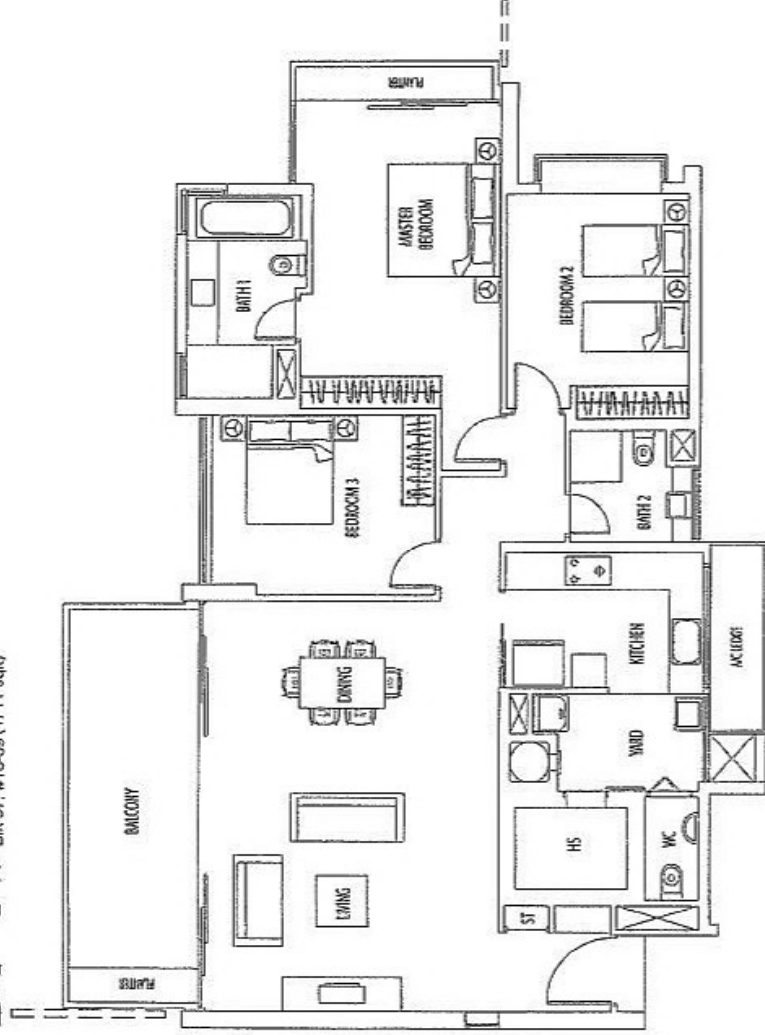


Bik 93, #28-01 (1798sqft)

E2 - 4

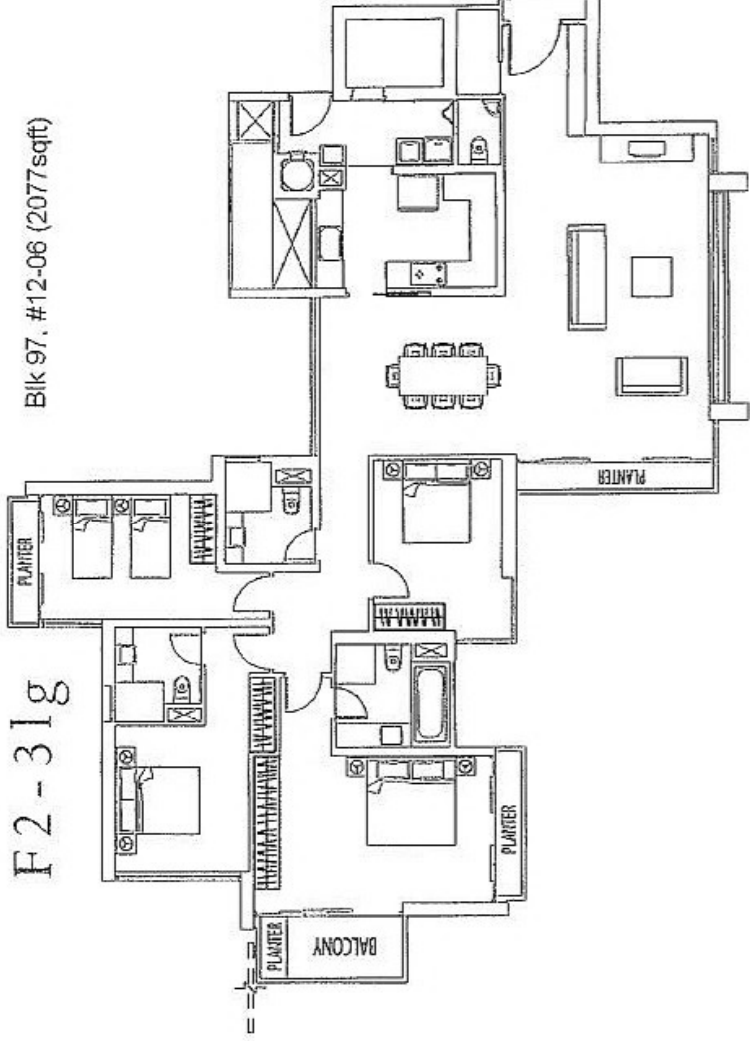


D1 - 1 W Bik 97, #16-09 (1711 sqft)



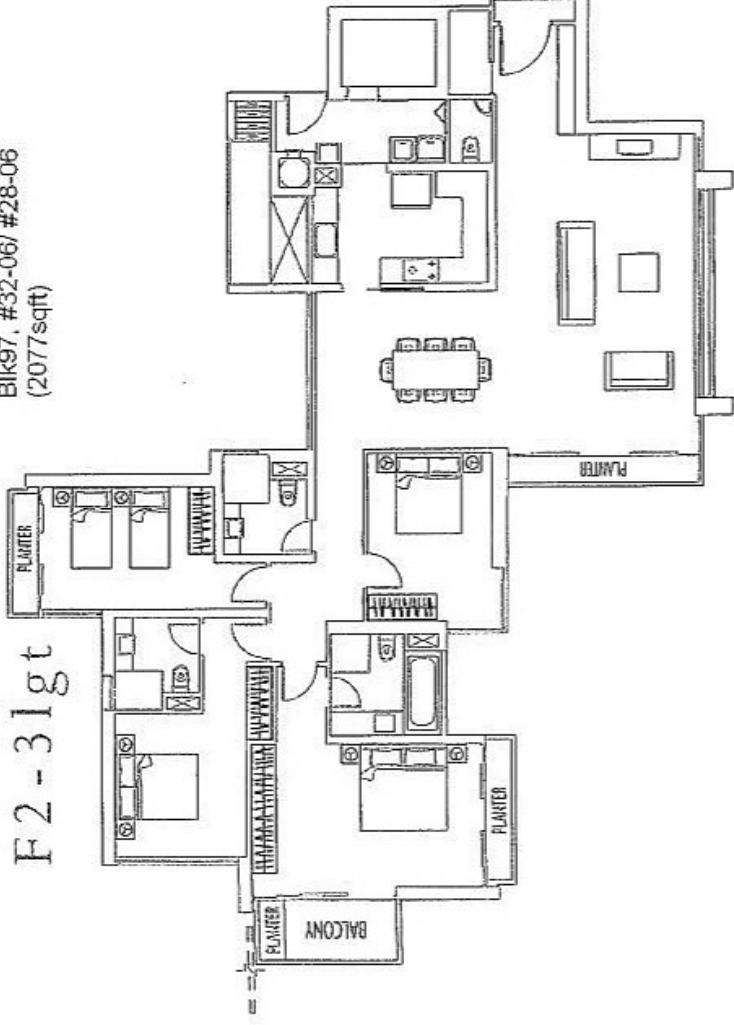
F2-31g

Blk 97, #12-06 (2077sqft)

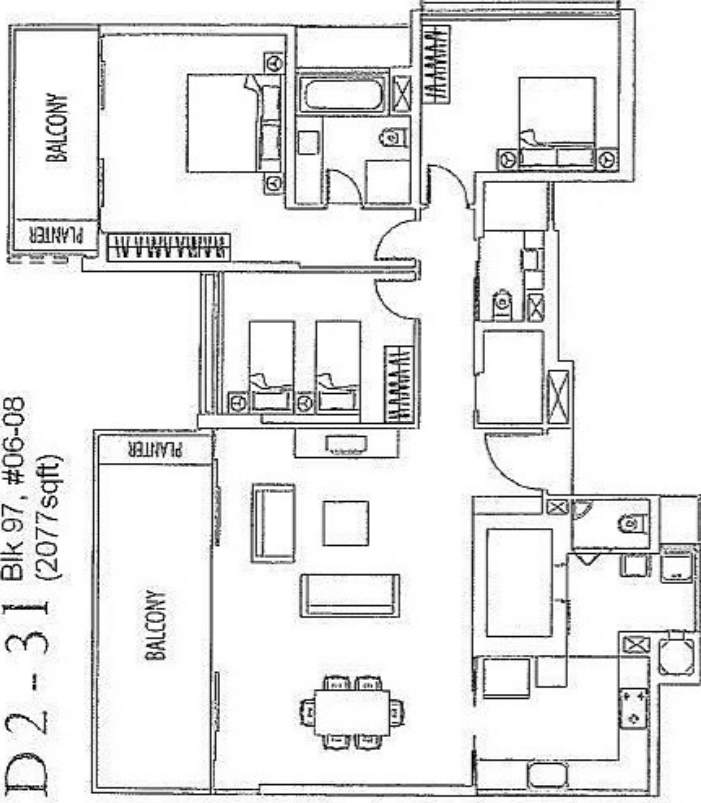


F2-31gt

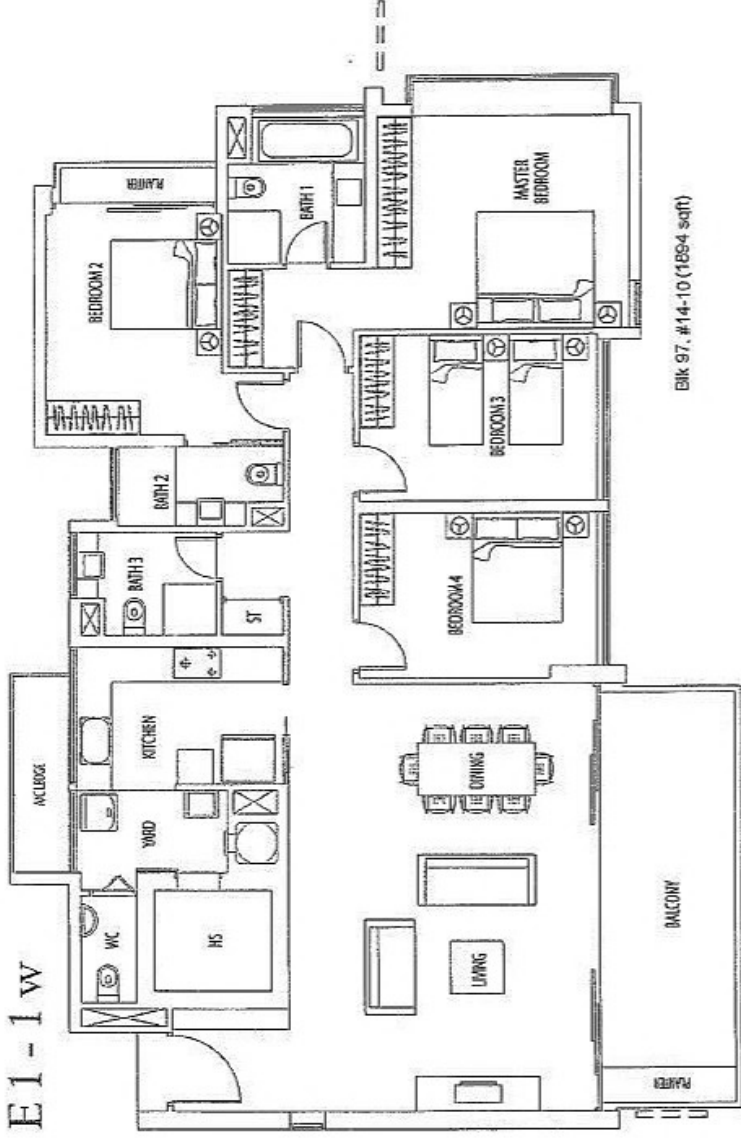
Blk97, #32-06/ #28-06 (2077sqft)



D2 - 31 Blk 97, #06-08  
(2077sqft)

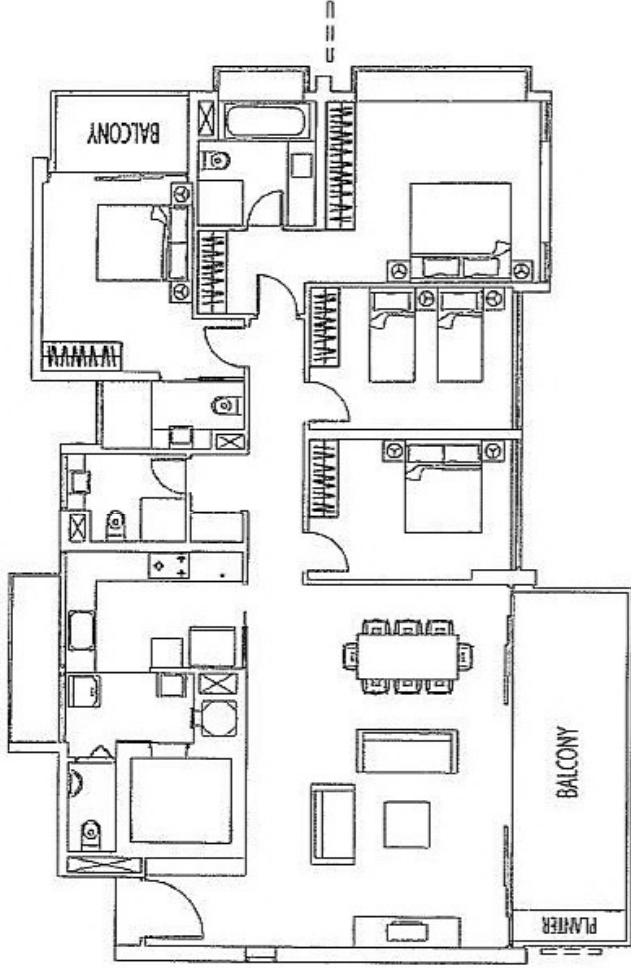


E1 - 1 w

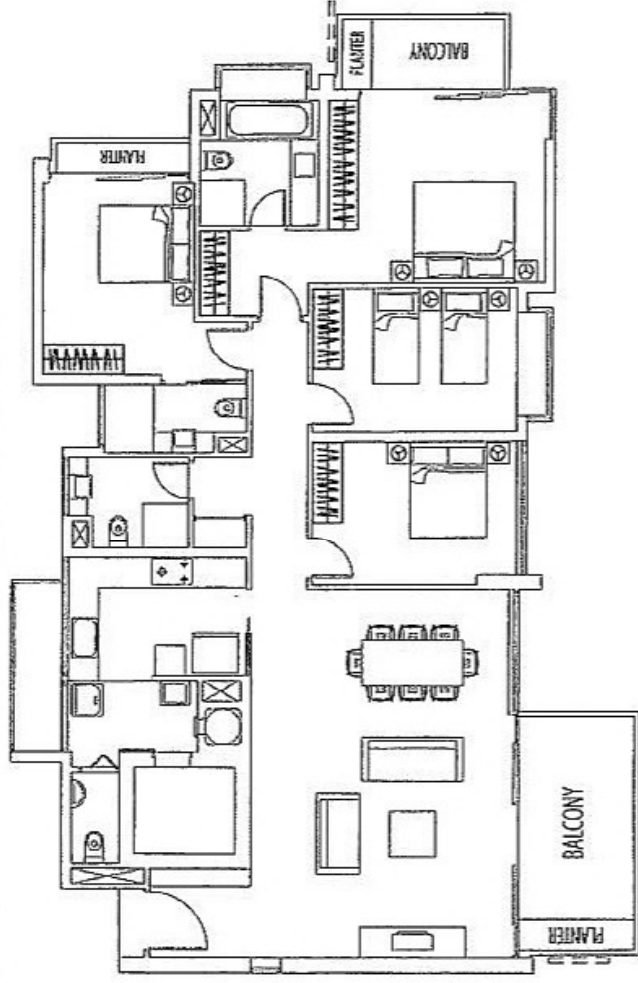


Blk 97, #14-10 (1894 sqft)

E1 - 4 W Blk 97, #36-10/#34-10 (1938sqft)

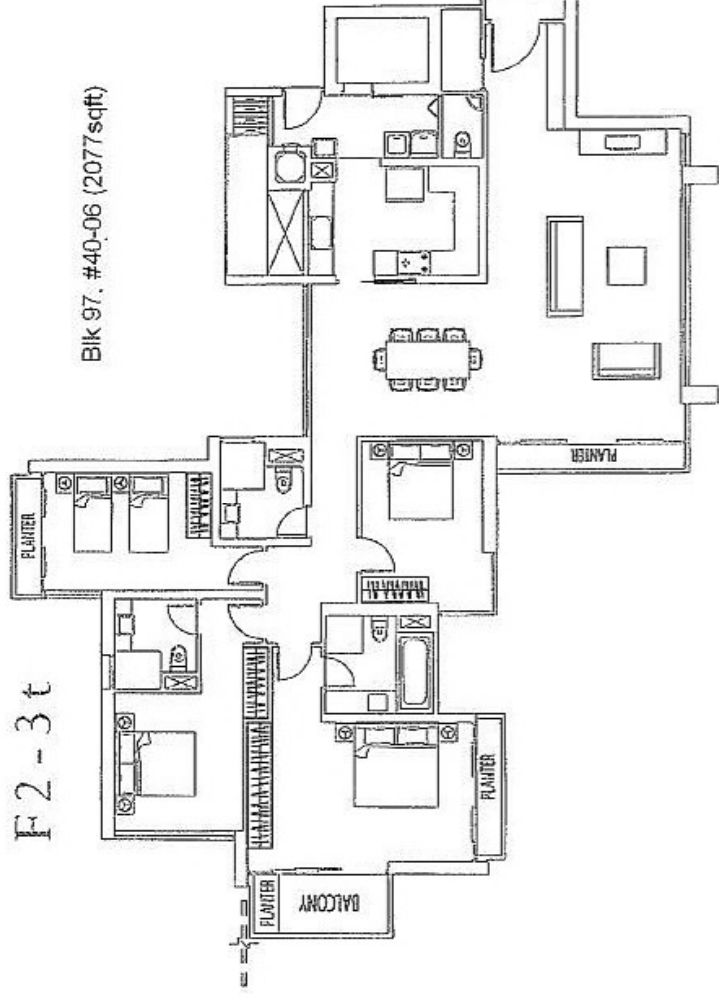


E1 - 5 W Blk 97, #24-10/#22-10 (1894sqft)

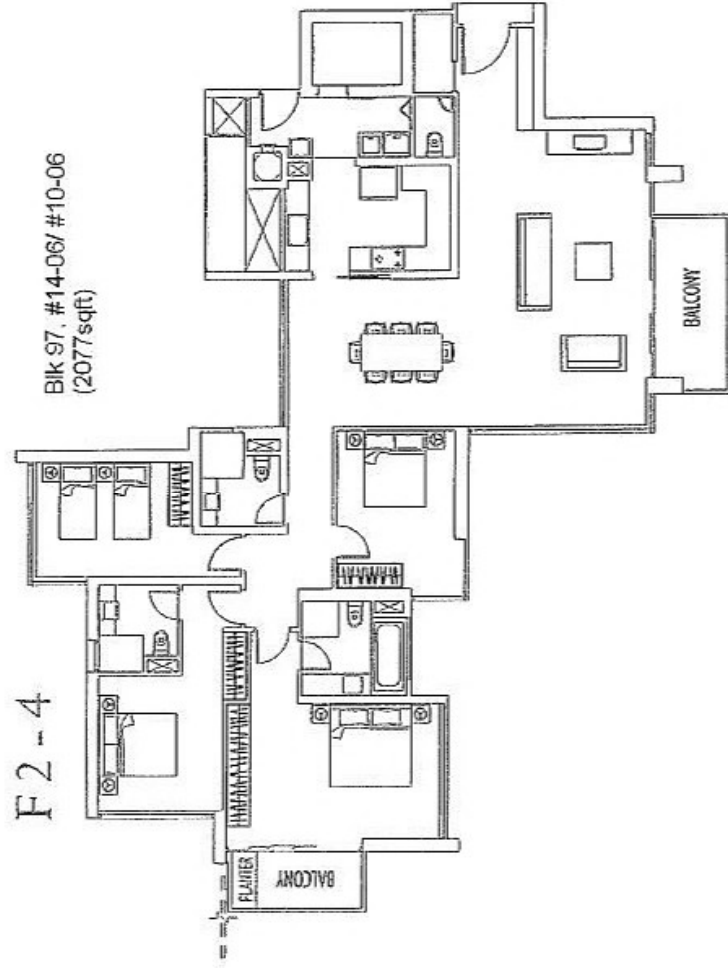


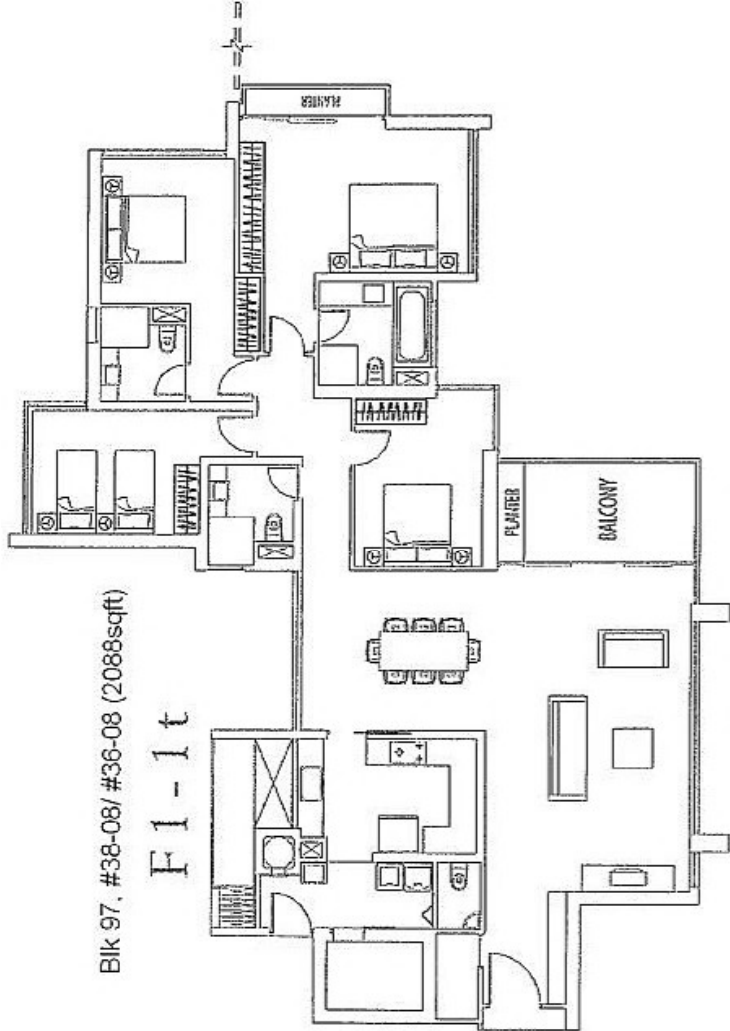


F2-3t



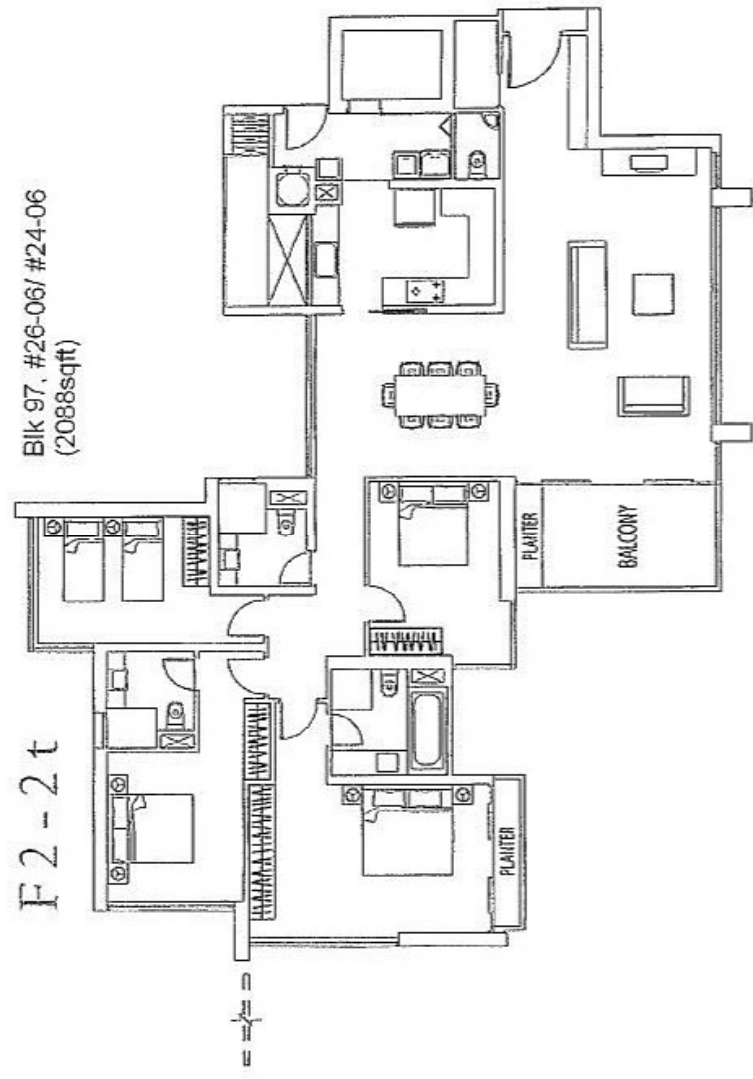
F2-4





Bik 97, #38-08/ #36-08 (2088sqft)

F1-1 t

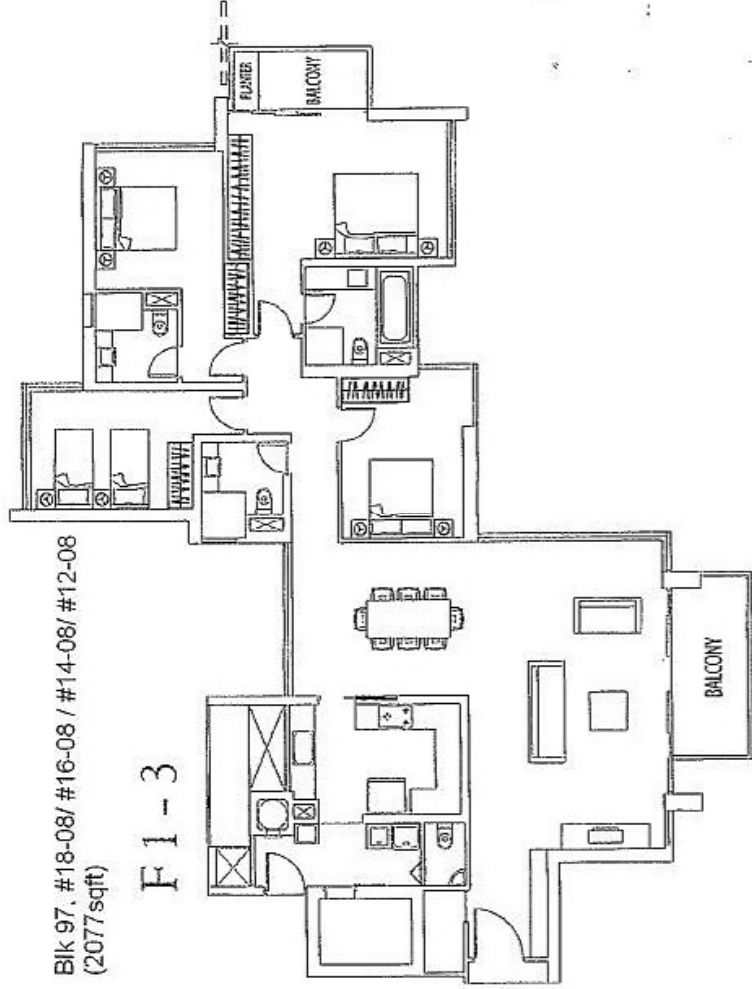


Bik 97, #26-06/ #24-06  
(2088sqft)

F2-2 t

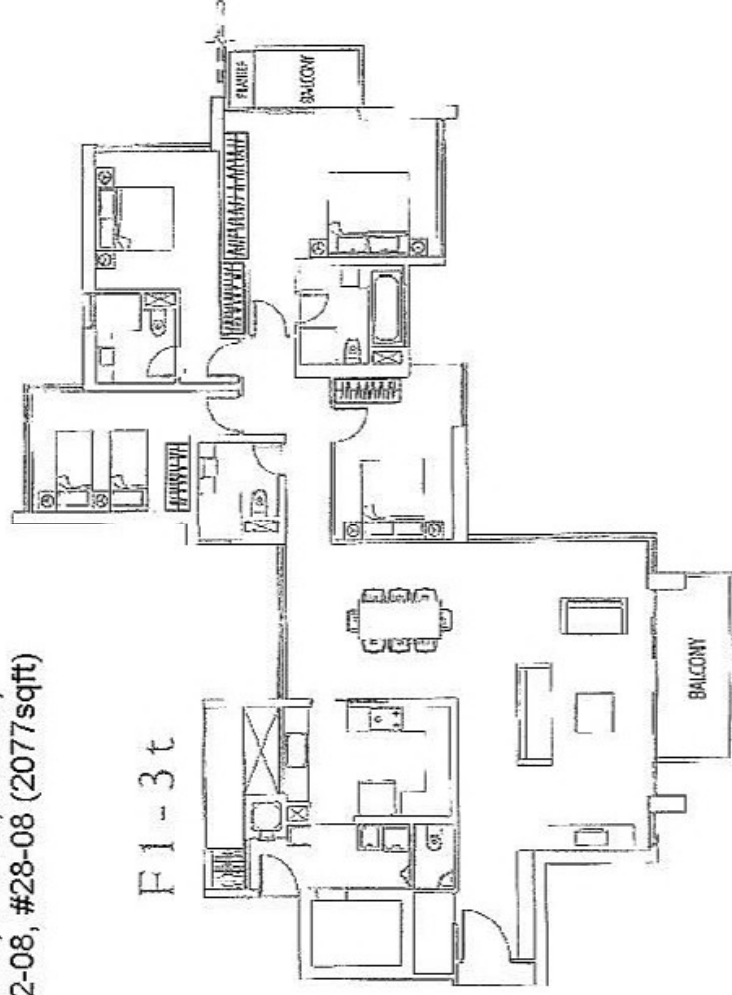
Blk 97, #18-08/ #16-08 / #14-08/ #12-08  
(2077sqft)

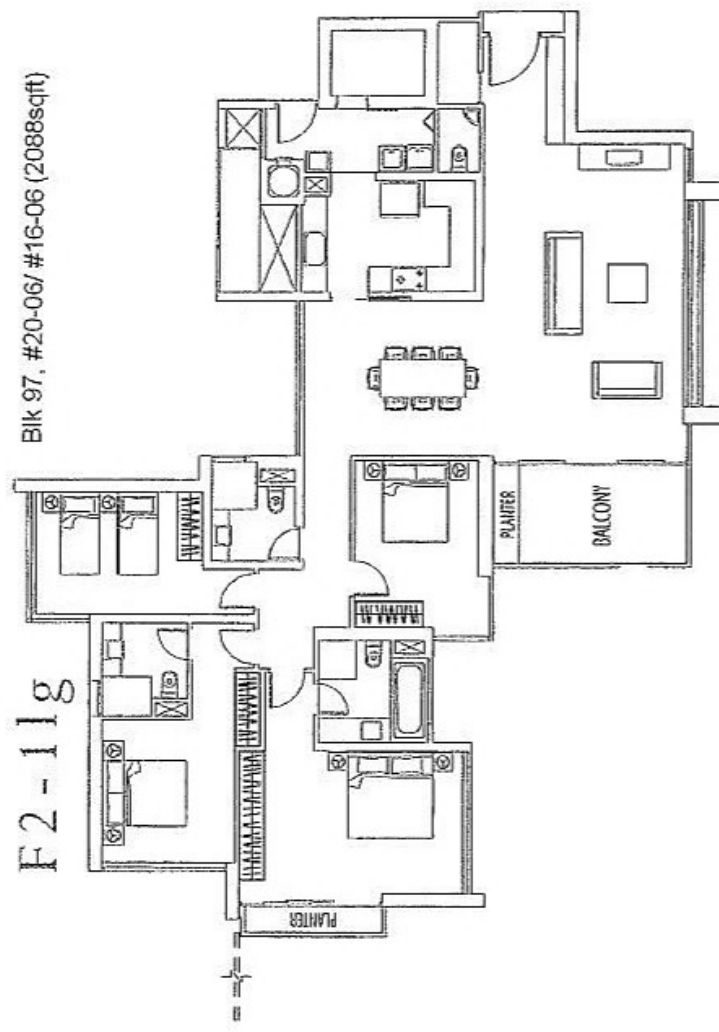
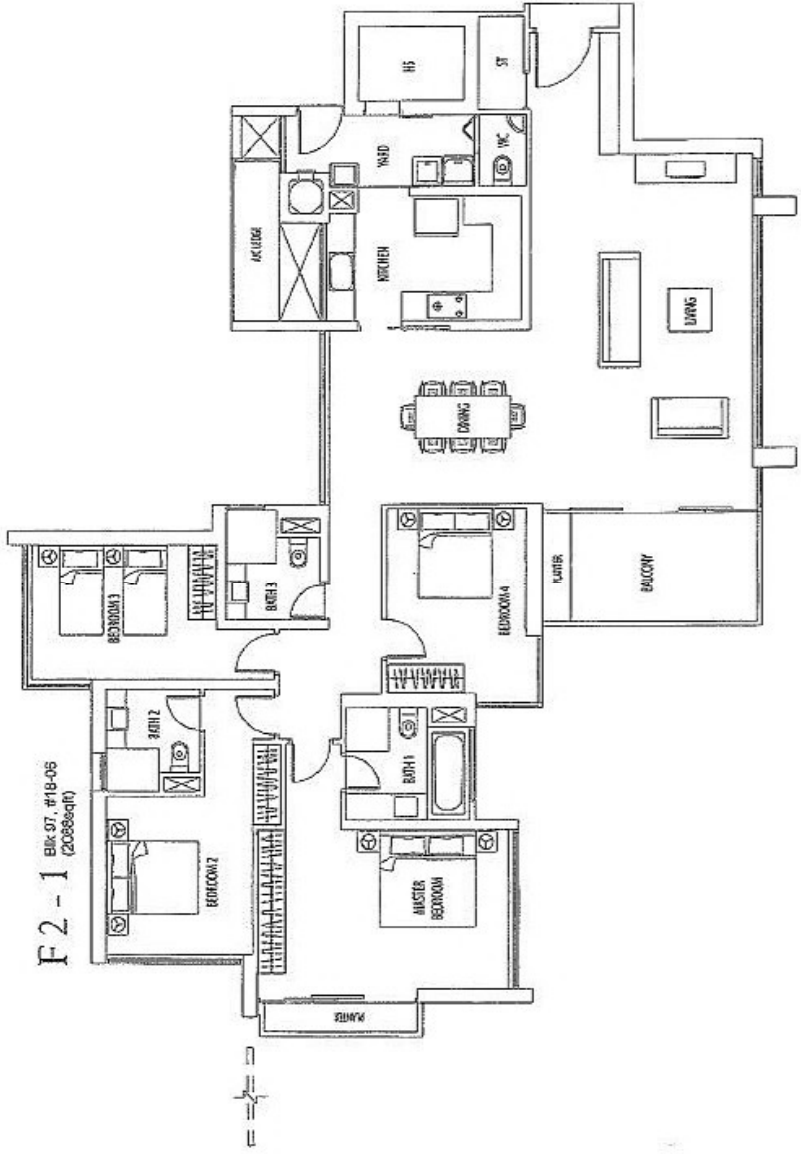
F1-3

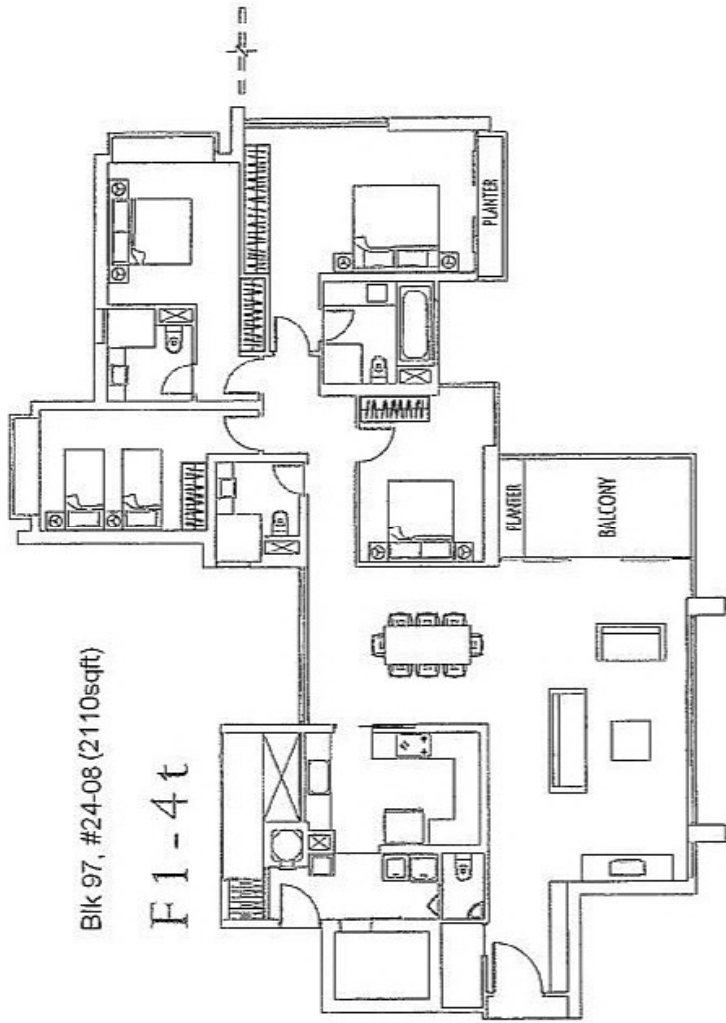
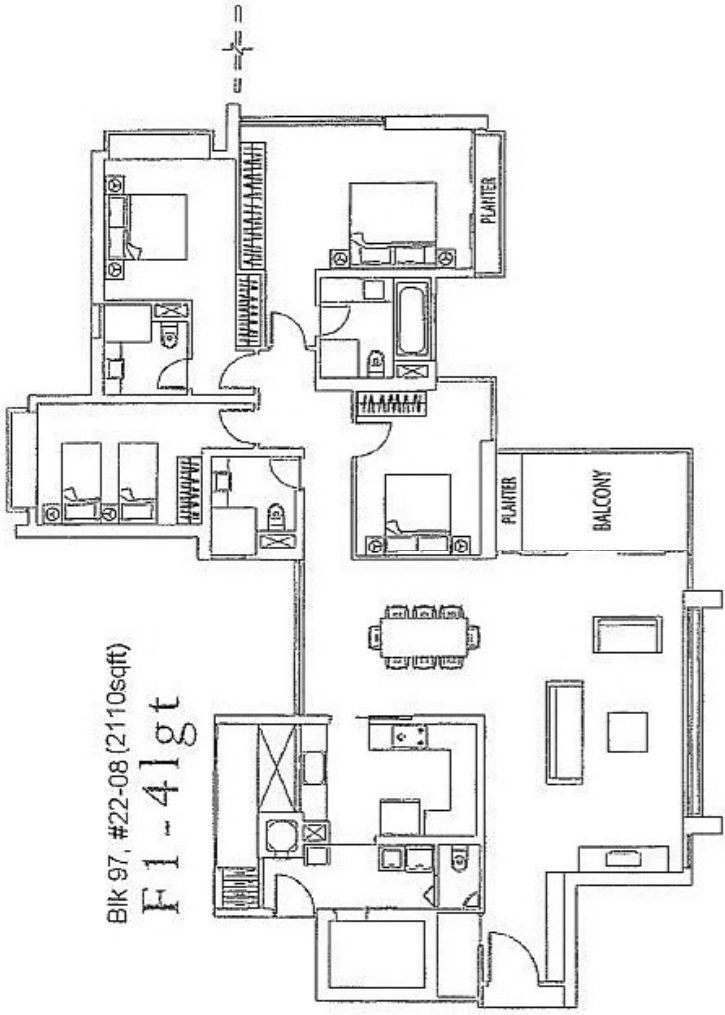


Blk 97, #40-08, #34-08,  
#32-08, #28-08 (2077sqft)

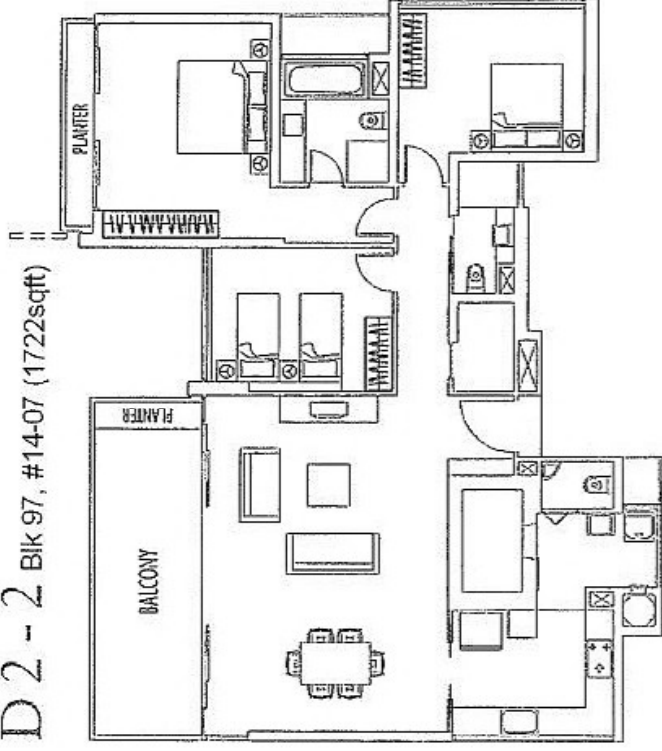
F1-3t



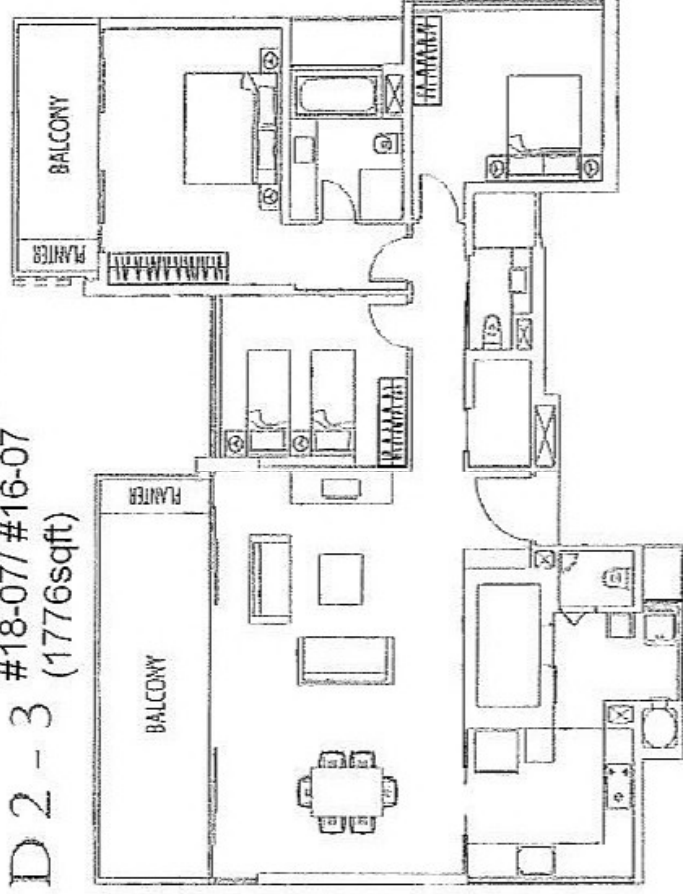




D 2 - 2 Bik 97, #14-07 (1722sqft)

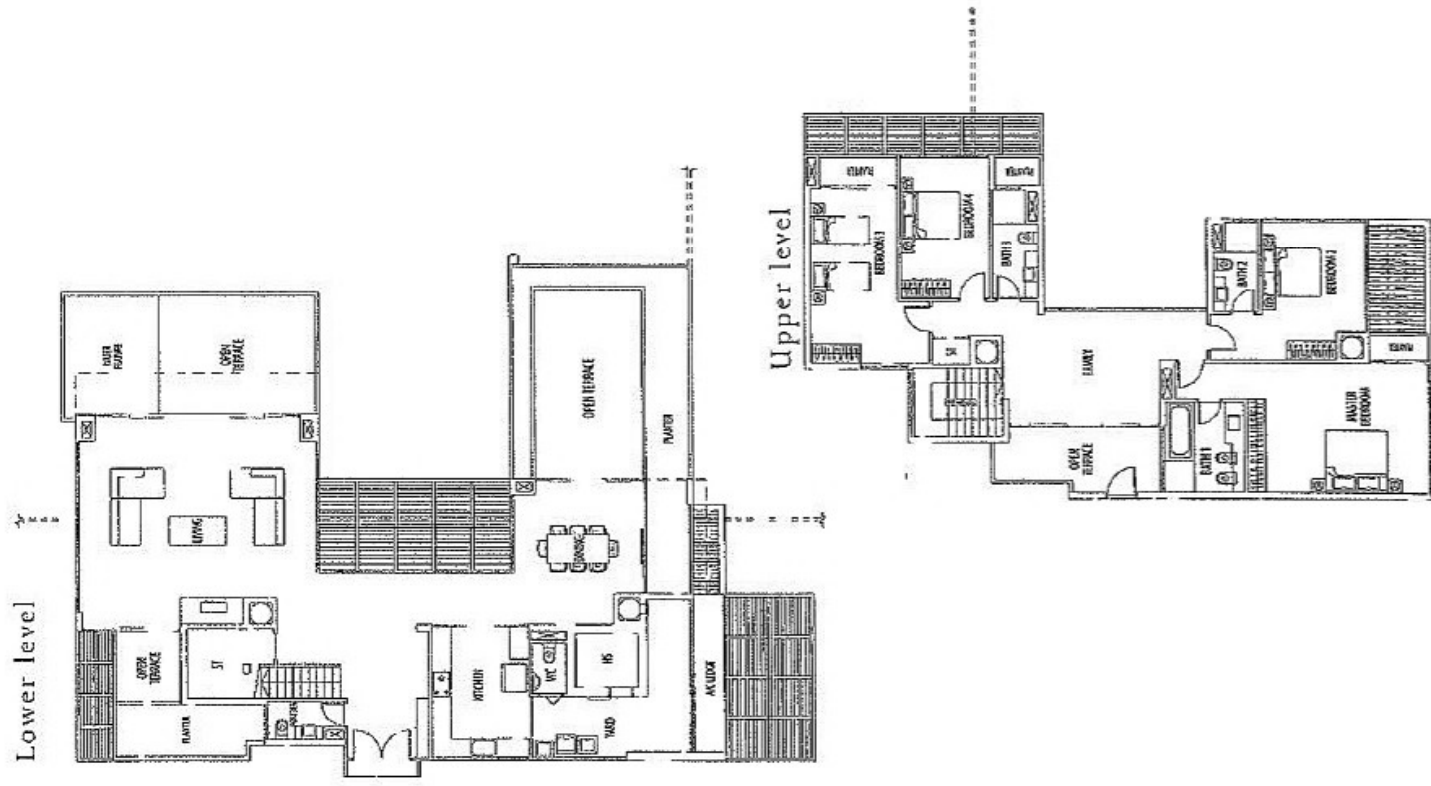


Bik 97, #22-07/ #20-07/  
D 2 - 3 #18-07/ #16-07  
(1776sqft)

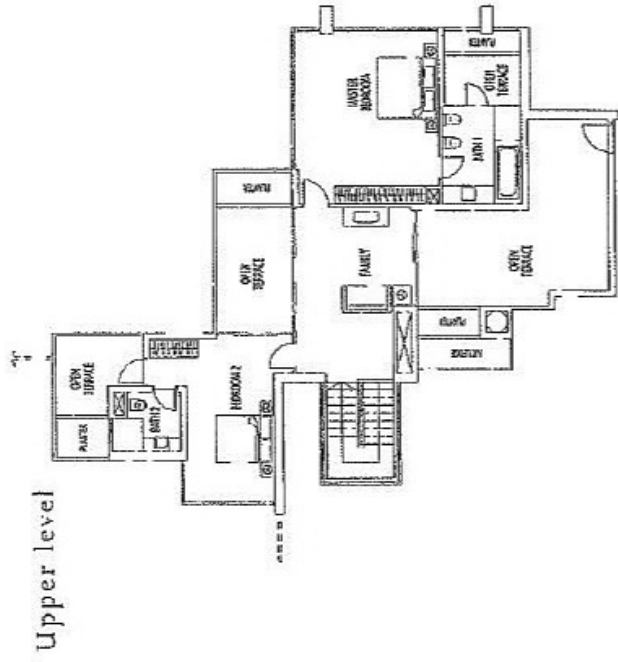
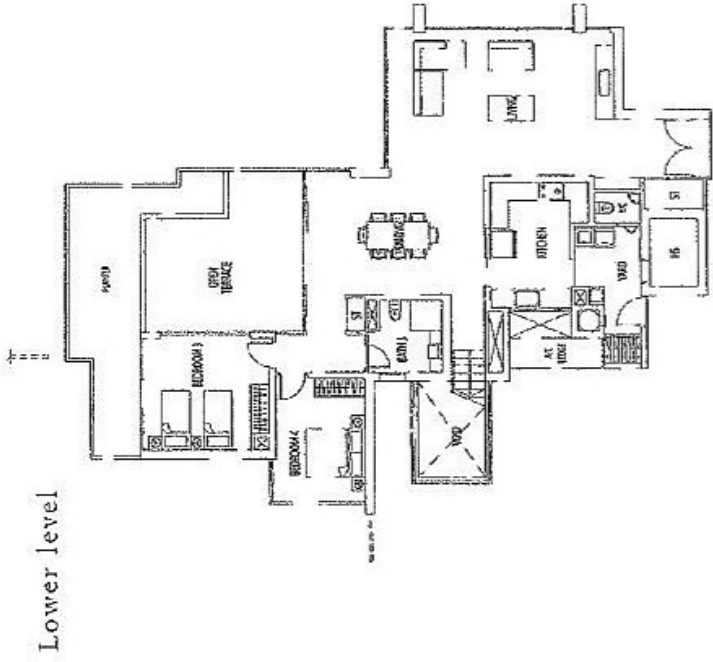


# Penthouse — Type PH 2m

BRN-97, 433-09 (4/18/2010)



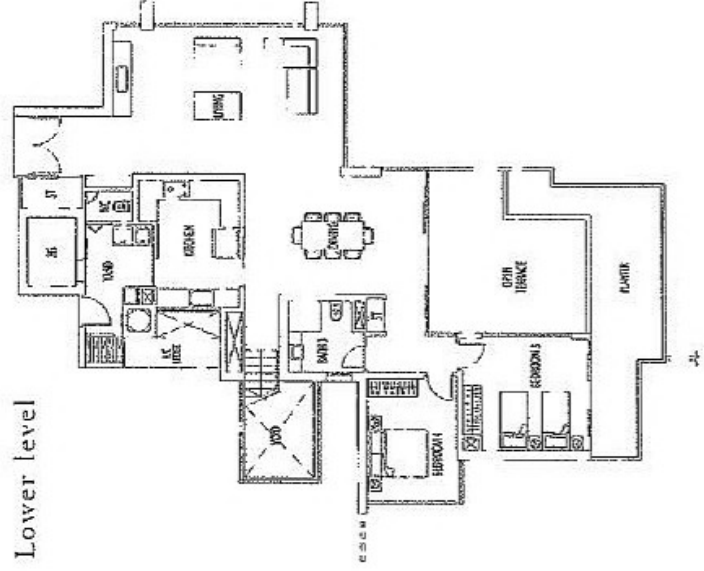
Penthouse – Type PH 3m Bk 97.441.08 (372640)



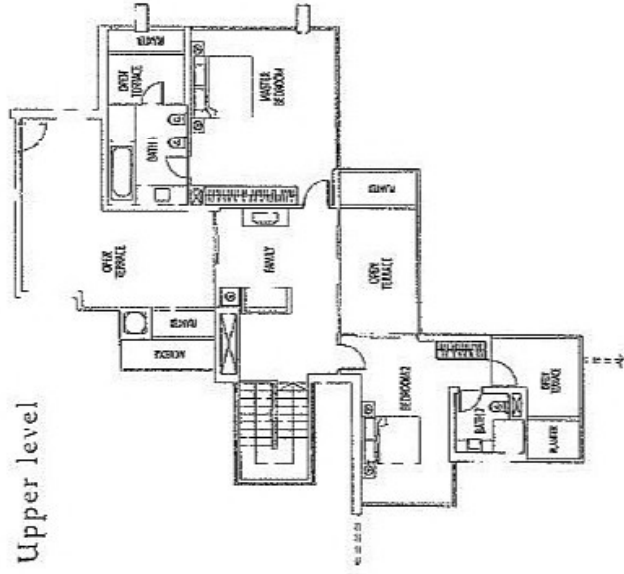


# Penthouse – Type PH 4m BN 07, #42-06 (3724sqft)

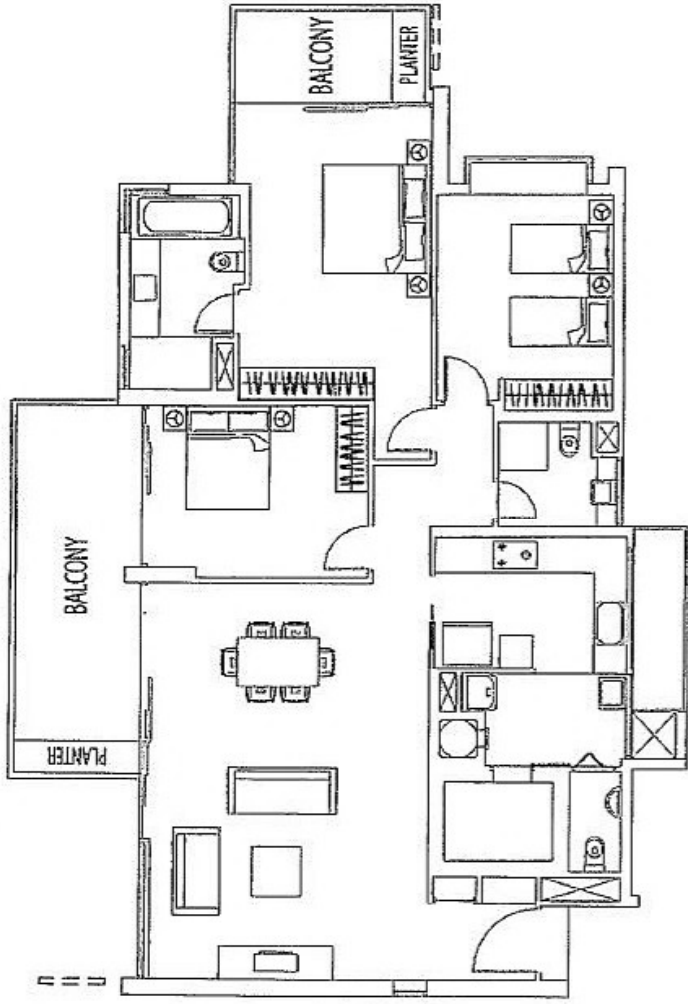
Lower level



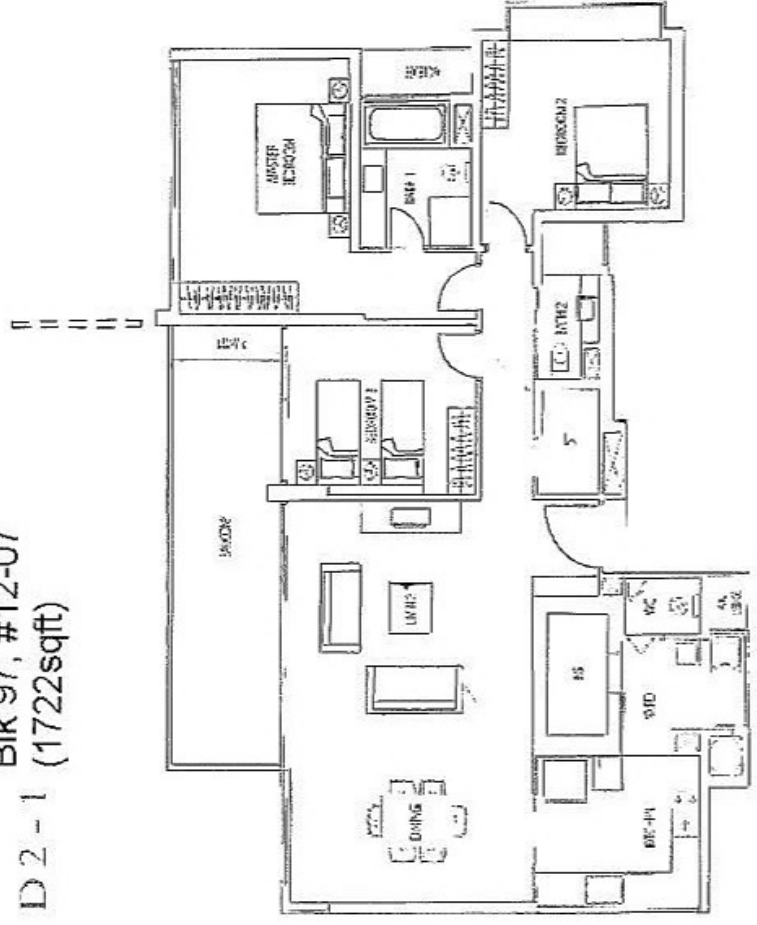
Upper level



D 1 - 4 W BIK 97, #20-09 (1744sqft)

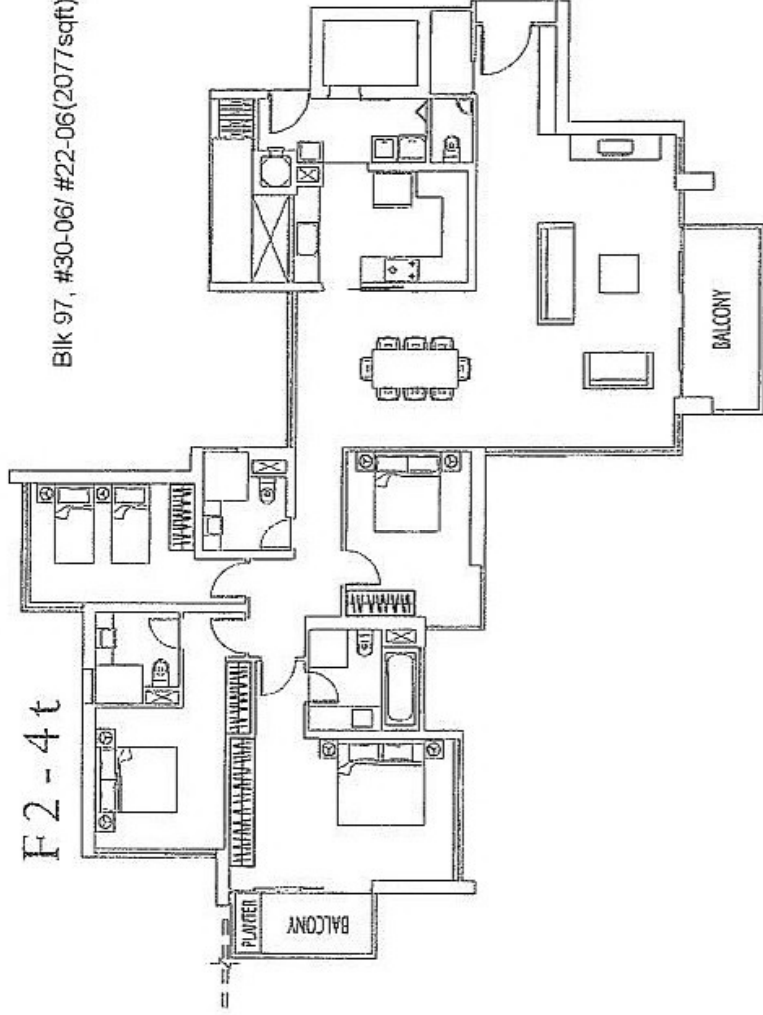


BIK 97, #12-07  
D 2 - 1 (1722sqft)



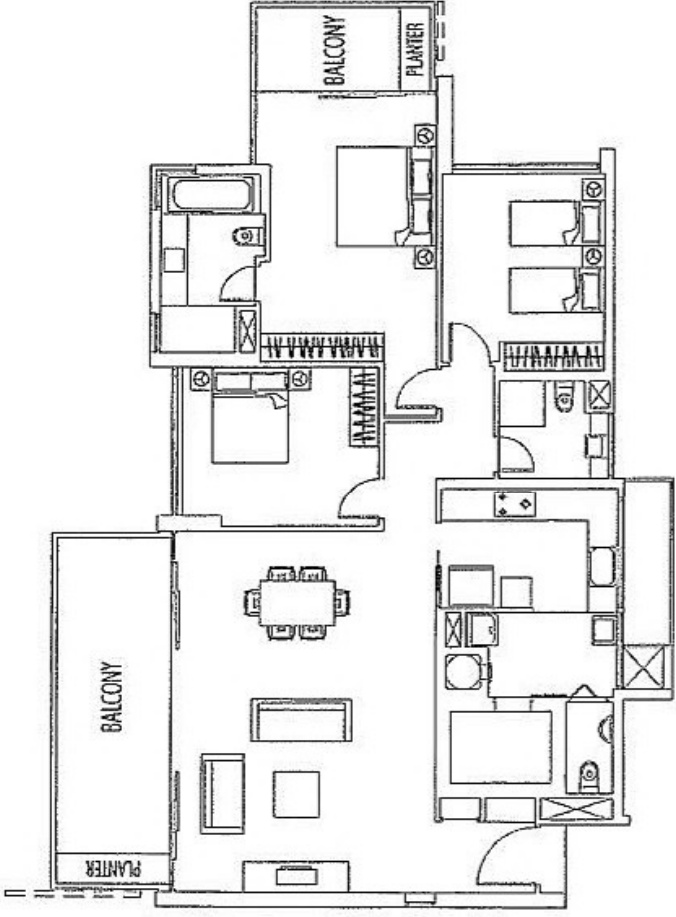
F2 - 4 t

Blok 97, #30-06/ #22-06(2077sqft)

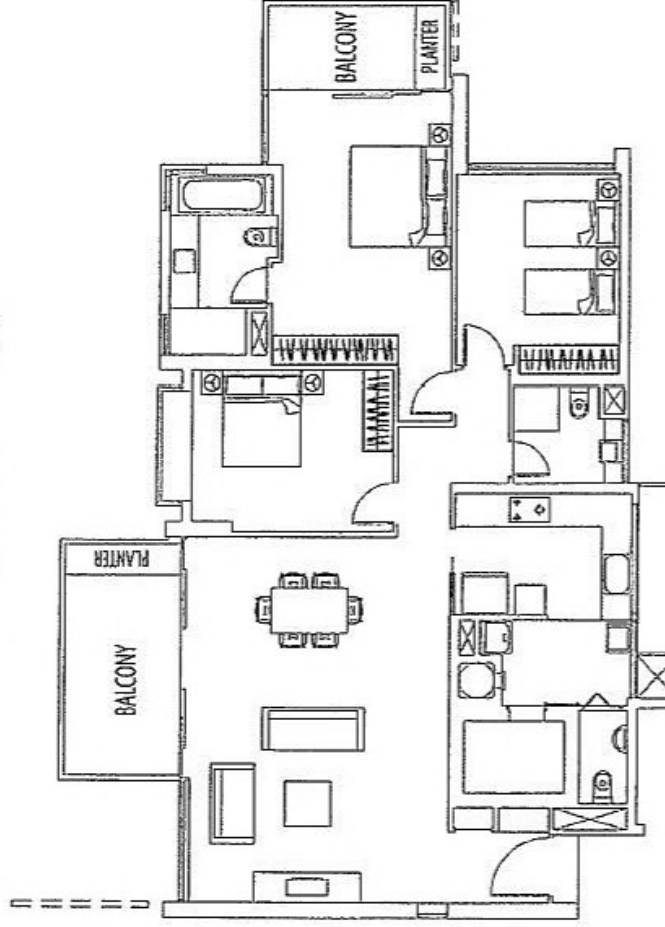


.....

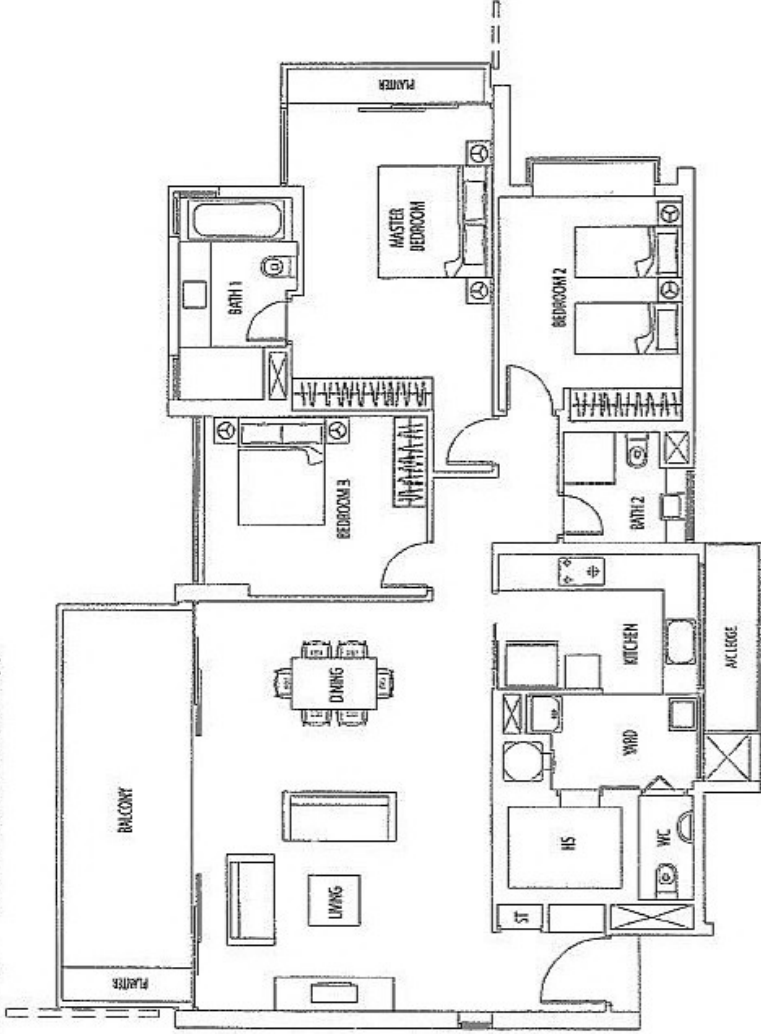
D 1 - 2 W BIK 97, #18-09/ #10-09/ #08-09 (1744sqft)



D 1 - 3 W BIK 97, #12-09 (1690sqft)



D1 - 1 W Blk 97, #14-09 (1711 sqft)



D1 - 1 W Blk 97, #06-09 (1711sqft)

