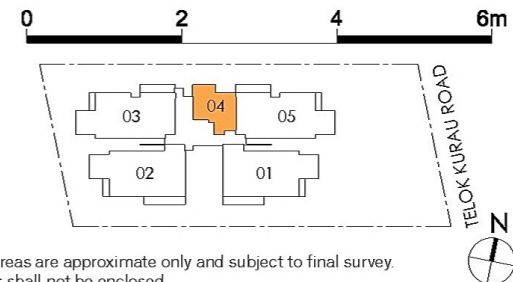
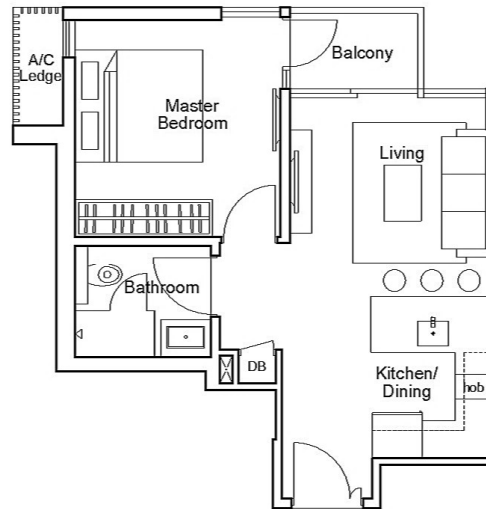


# TYPE A - 1 Bed Room

#02-04, #03-04, #04-04, #05-04

46 m<sup>2</sup> / 495 Sqft

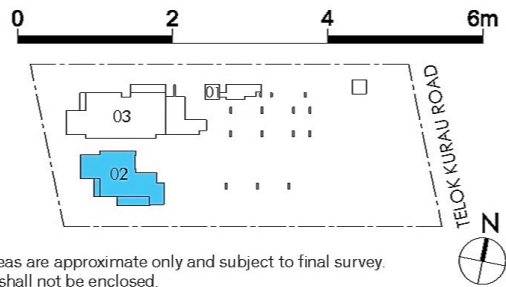
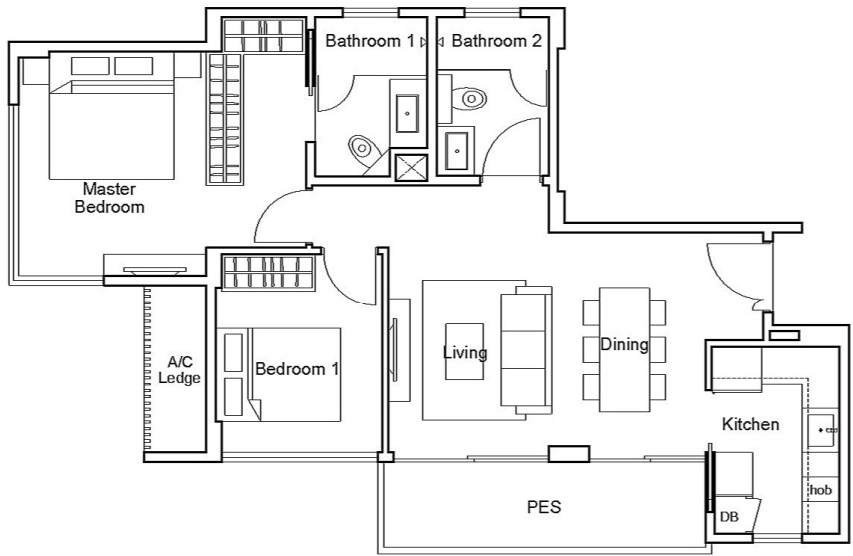


Plans are not drawn to scale and subject to changes as may be required or approved by the relevant authorities. All areas are approximate only and subject to final survey. Floor areas are inclusive of PES, balconies, A/C Ledges and Strata Voids (where applicable). The PES and Balconies shall not be enclosed.

# TYPE B - 2 Bed Room

#01-02

80 m<sup>2</sup> / 861 Sqft

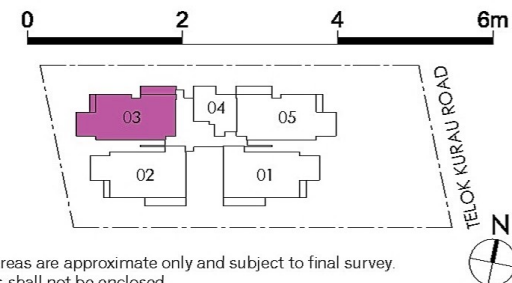
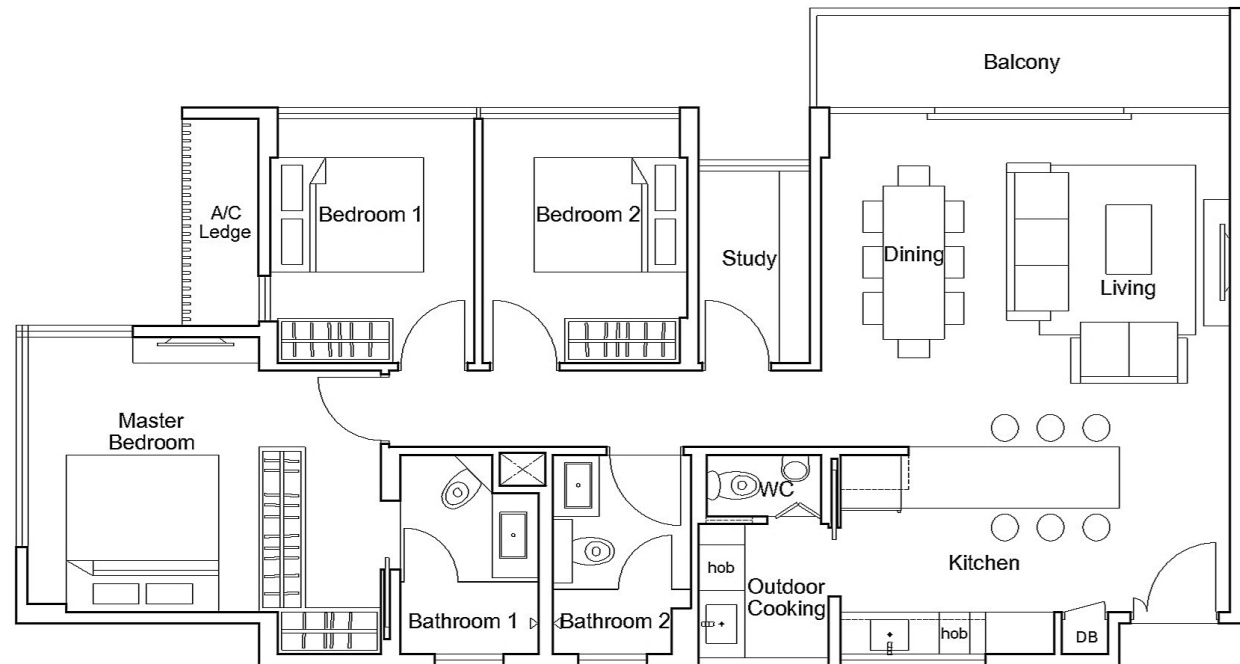


Plans are not drawn to scale and subject to changes as may be required or approved by the relevant authorities. All areas are approximate only and subject to final survey. Floor areas are inclusive of PES, balconies, A/C Ledges and Strata Voids (where applicable). The PES and Balconies shall not be enclosed.

# TYPE C1 - 3 Bed Room with Study

#02-03, #03-03, #04-03, #05-03

111 m<sup>2</sup> / 1195 Sqft

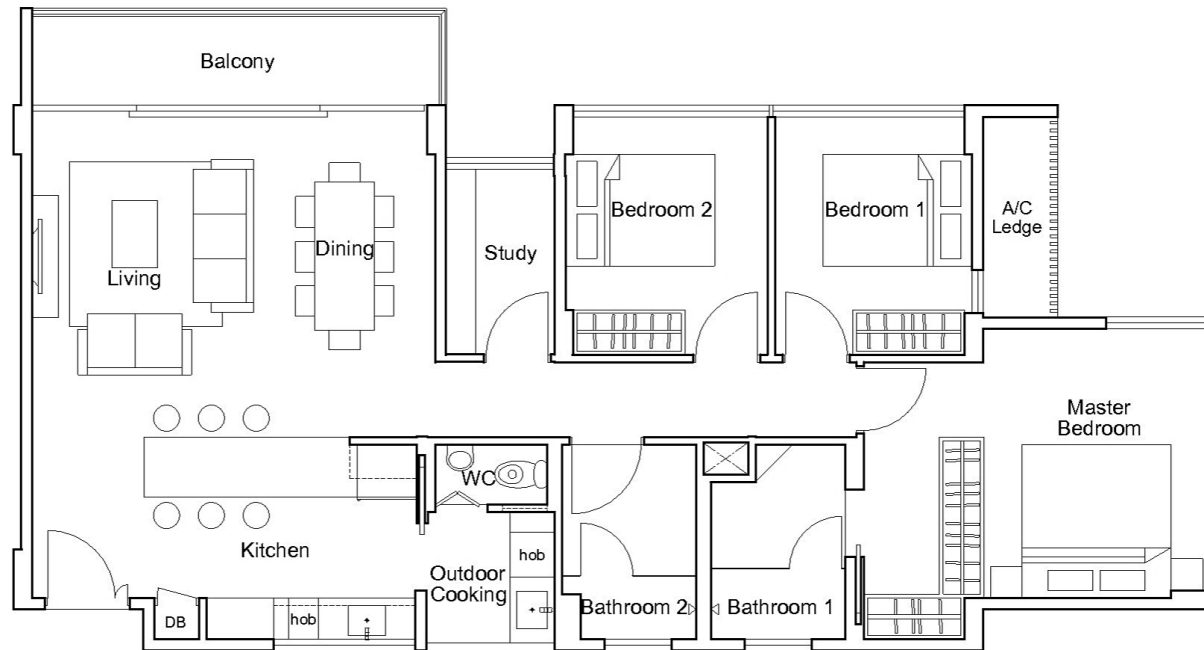


Plans are not drawn to scale and subject to changes as may be required or approved by the relevant authorities. All areas are approximate only and subject to final survey. Floor areas are inclusive of PES, balconies, A/C Ledges and Strata Voids (where applicable). The PES and Balconies shall not be enclosed.

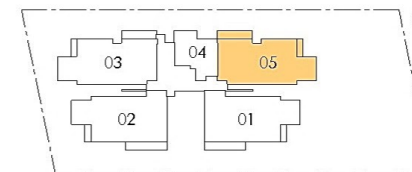
# TYPE C2 - 3 Bed Room with Study

#02-05, #03-05, #04-05, #05-05

111 m<sup>2</sup> / 1195 Sqft



0 2 4 6m



TELOK KURAU ROAD

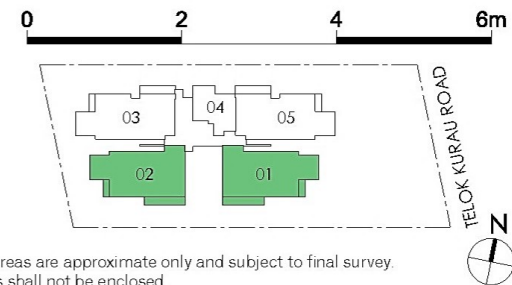
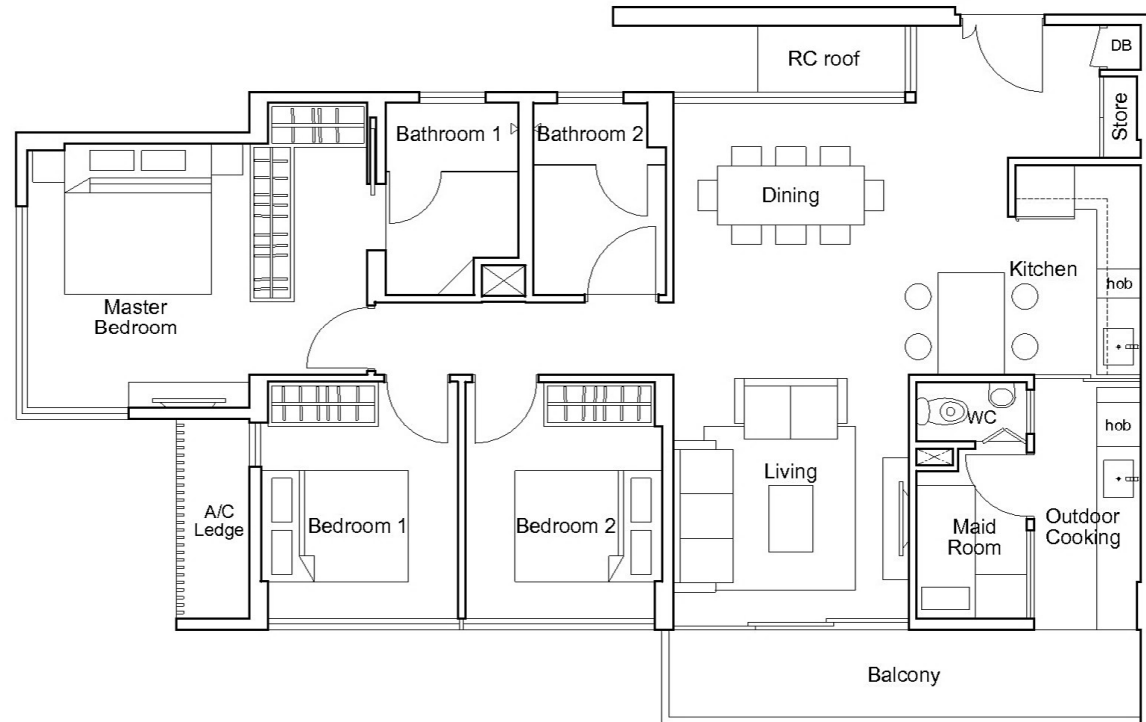


Plans are not drawn to scale and subject to changes as may be required or approved by the relevant authorities. All areas are approximate only and subject to final survey. Floor areas are inclusive of PES, balconies, A/C Ledges and Strata Voids (where applicable). The PES and Balconies shall not be enclosed.

# TYPE C3 - 3 Bed Room with Maid's room

#02-01, #03-01, #04-01, #05-01 (mirror image)  
#02-02, #03-02, #04-02, #05-02

113 m<sup>2</sup> / 1216 Sqft

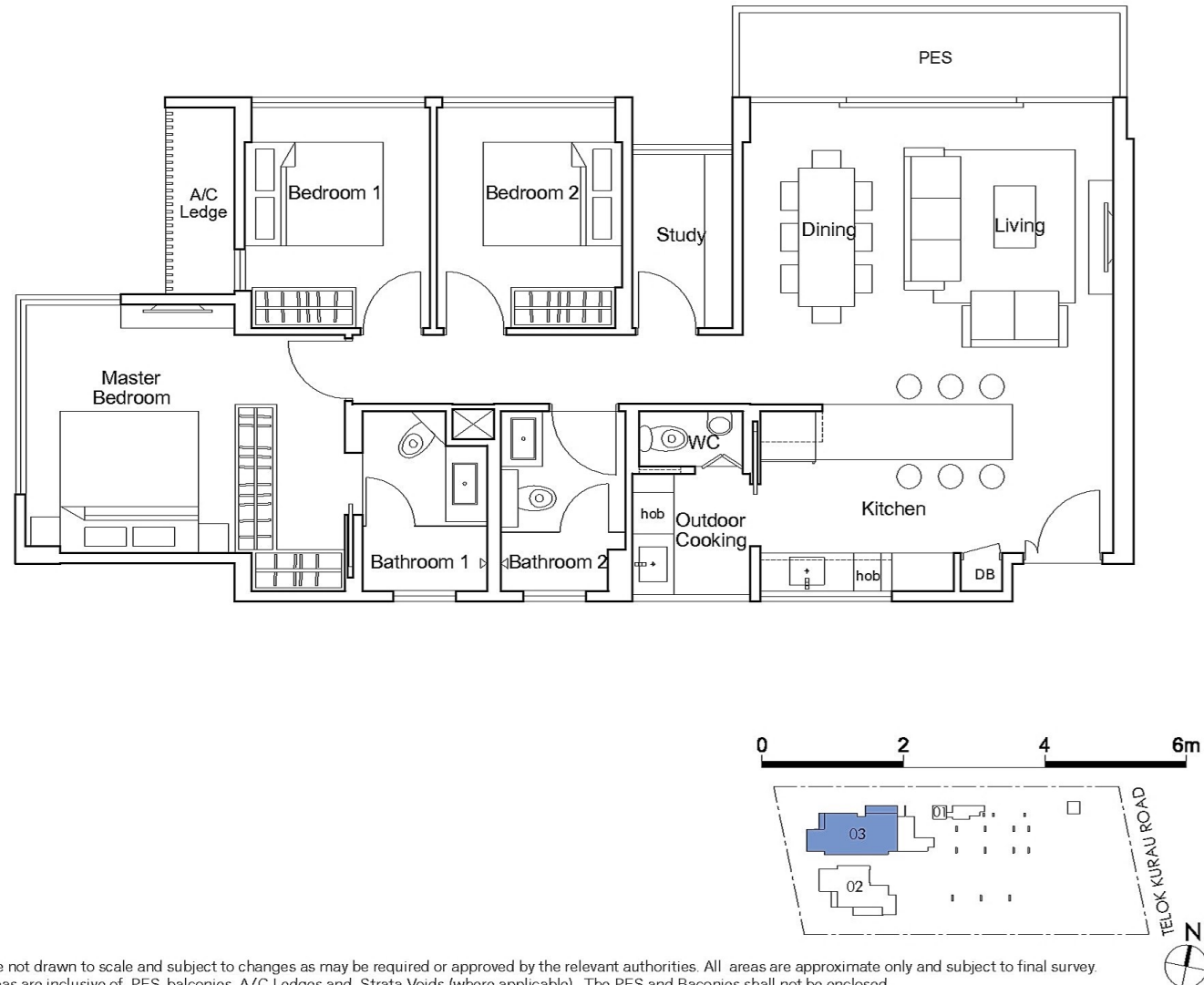


Plans are not drawn to scale and subject to changes as may be required or approved by the relevant authorities. All areas are approximate only and subject to final survey. Floor areas are inclusive of PES, balconies, A/C Ledges and Strata Voids (where applicable). The PES and Balconies shall not be enclosed.

# TYPE C - 3 Bed Room with Study

#01-03

111 m<sup>2</sup> / 1195 Sqft



Plans are not drawn to scale and subject to changes as may be required or approved by the relevant authorities. All areas are approximate only and subject to final survey. Floor areas are inclusive of PES, balconies, A/C Ledges and Strata Voids (where applicable). The PES and Balconies shall not be enclosed.