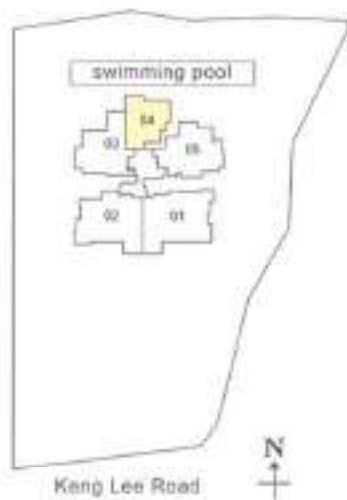


TYPE A1

2 Bedroom

94 sqm / 1012 sqft

#02-04 - #25-04



TYPE D1

4 Bedroom

173 sqm / 1862 sqft

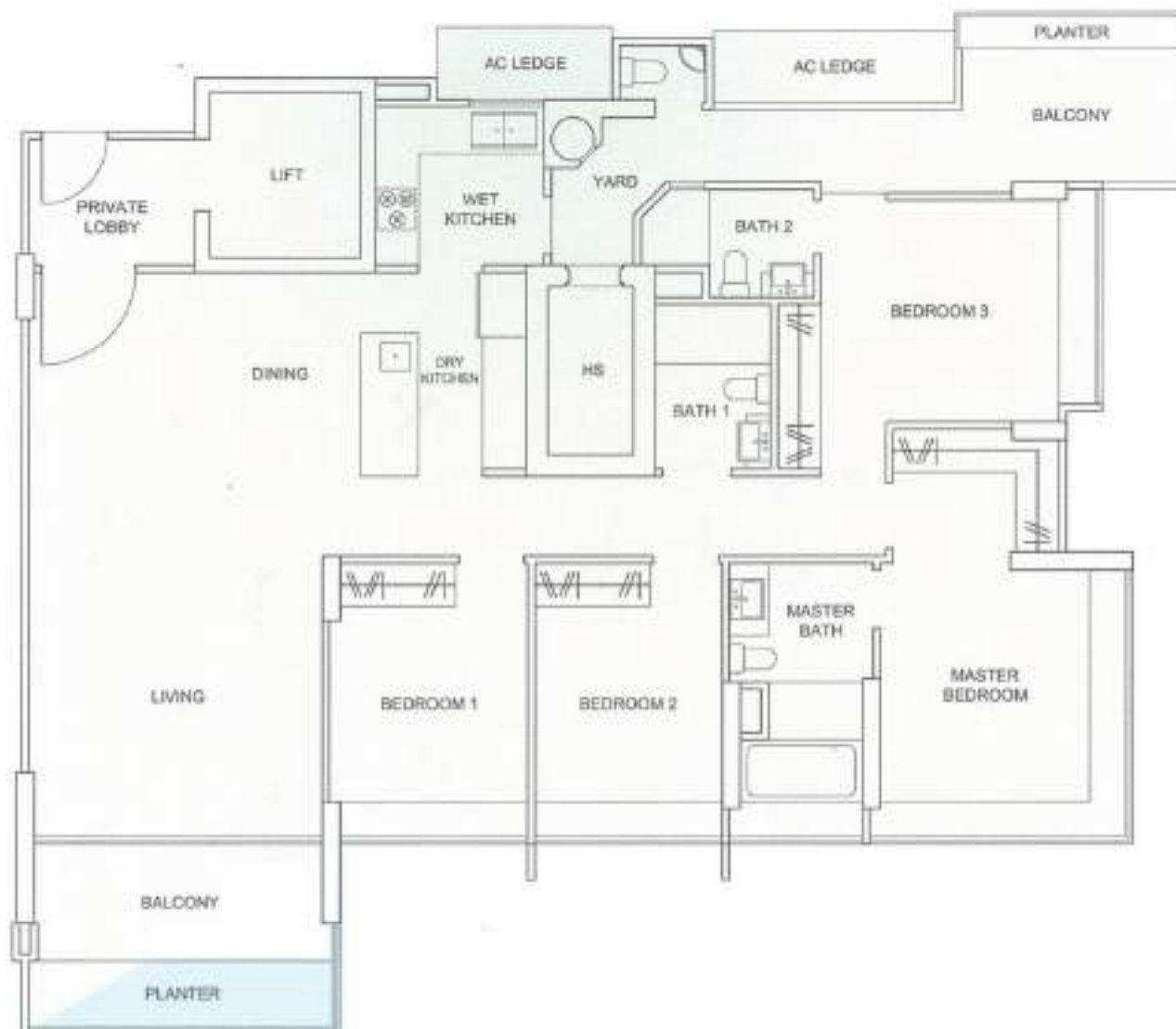
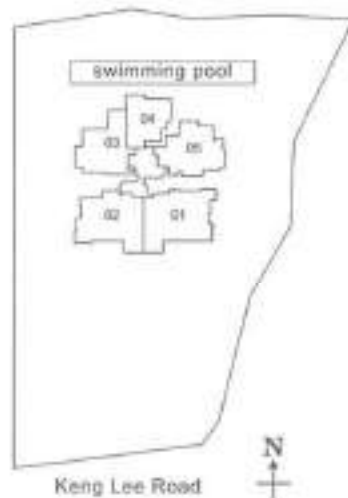
#02-01 - #05-01

#07-01 - #10-01

#12-01 - #15-01

#17-01 - #20-01

#22-01 - #25-01



TYPE D2

4 Bedroom

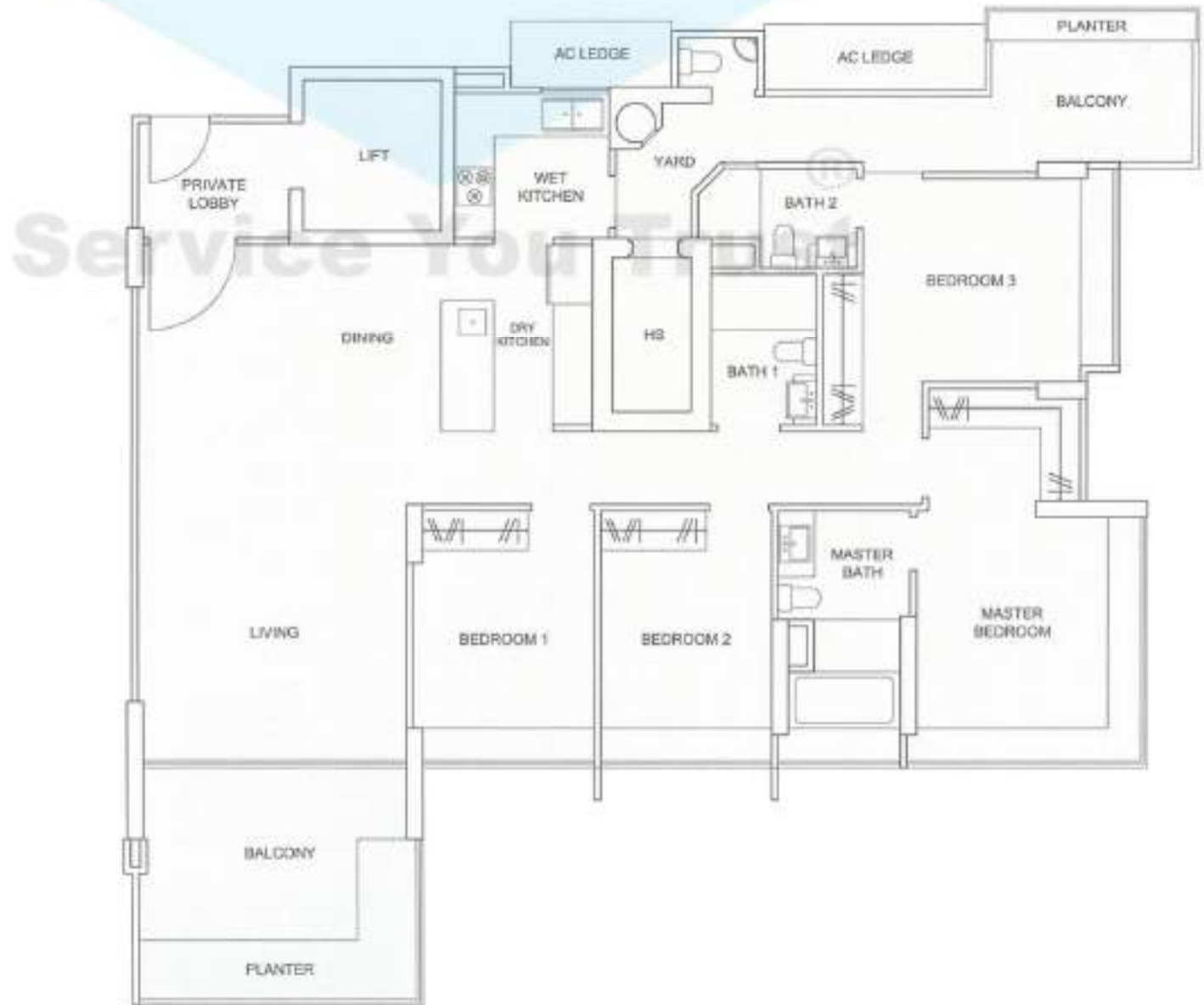
177 sqm / 1905 sqft

#06-01

#11-01

#16-01

#21-01



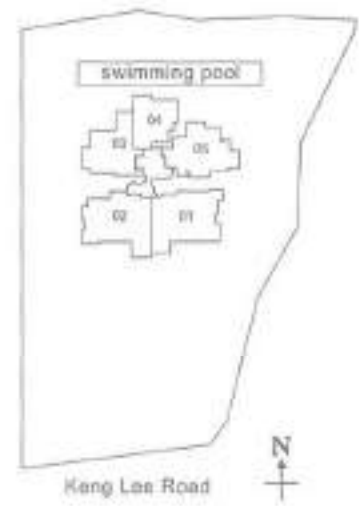
The above plans are subject to change and approval by the relevant authority. Areas are approximate and subject to final survey. Plans are not to scale.



TYPE D4

4 Bedroom
166 sqm / 1787 sqft

#19-02
#24-02



The above plans are subject to change and approval by the relevant authority. Areas are approximate and subject to final survey. Plans are not to scale.



TYPE E4

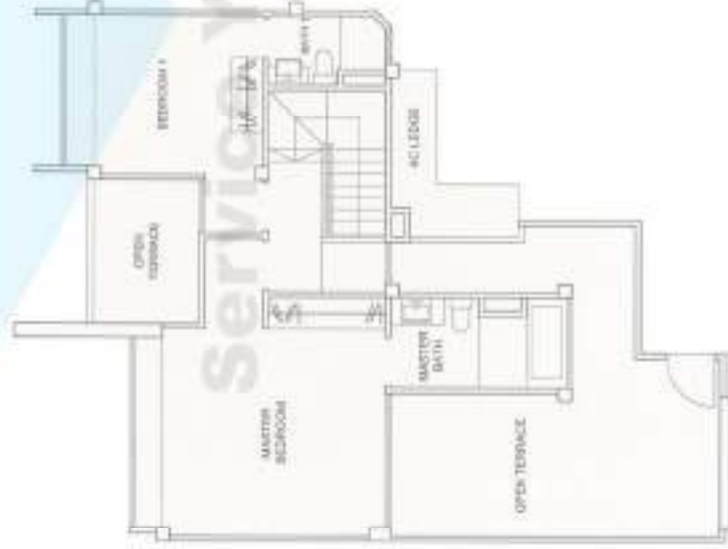
Penthouse

189 sqm / 2034 sqft

#26-04

LOWER

PropNex



UPPER

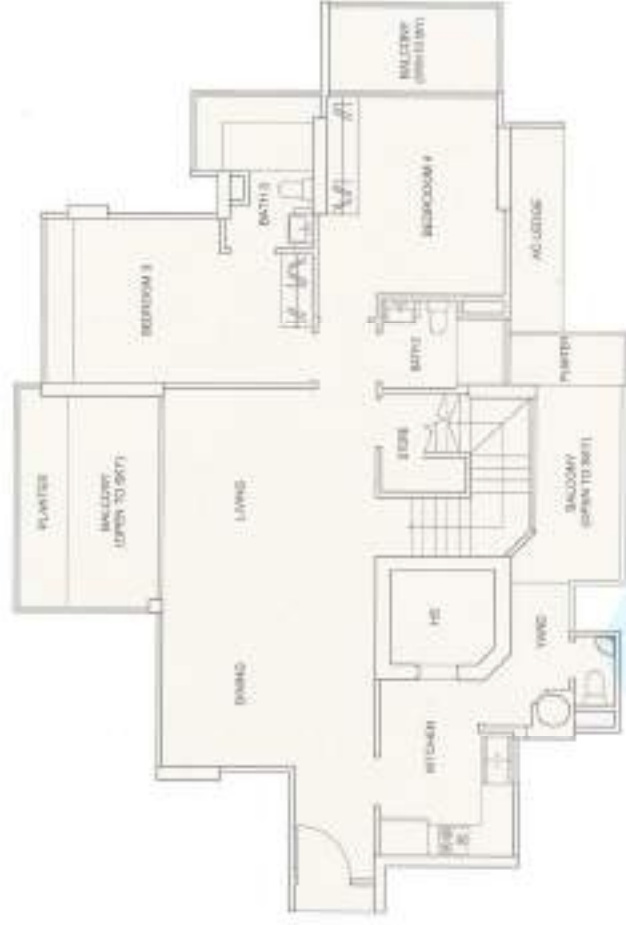


TYPE E5

Penthouse

228 sqm / 2454 sqft

#26-05



LOWER

PropNex

UPPER



TYPE B3

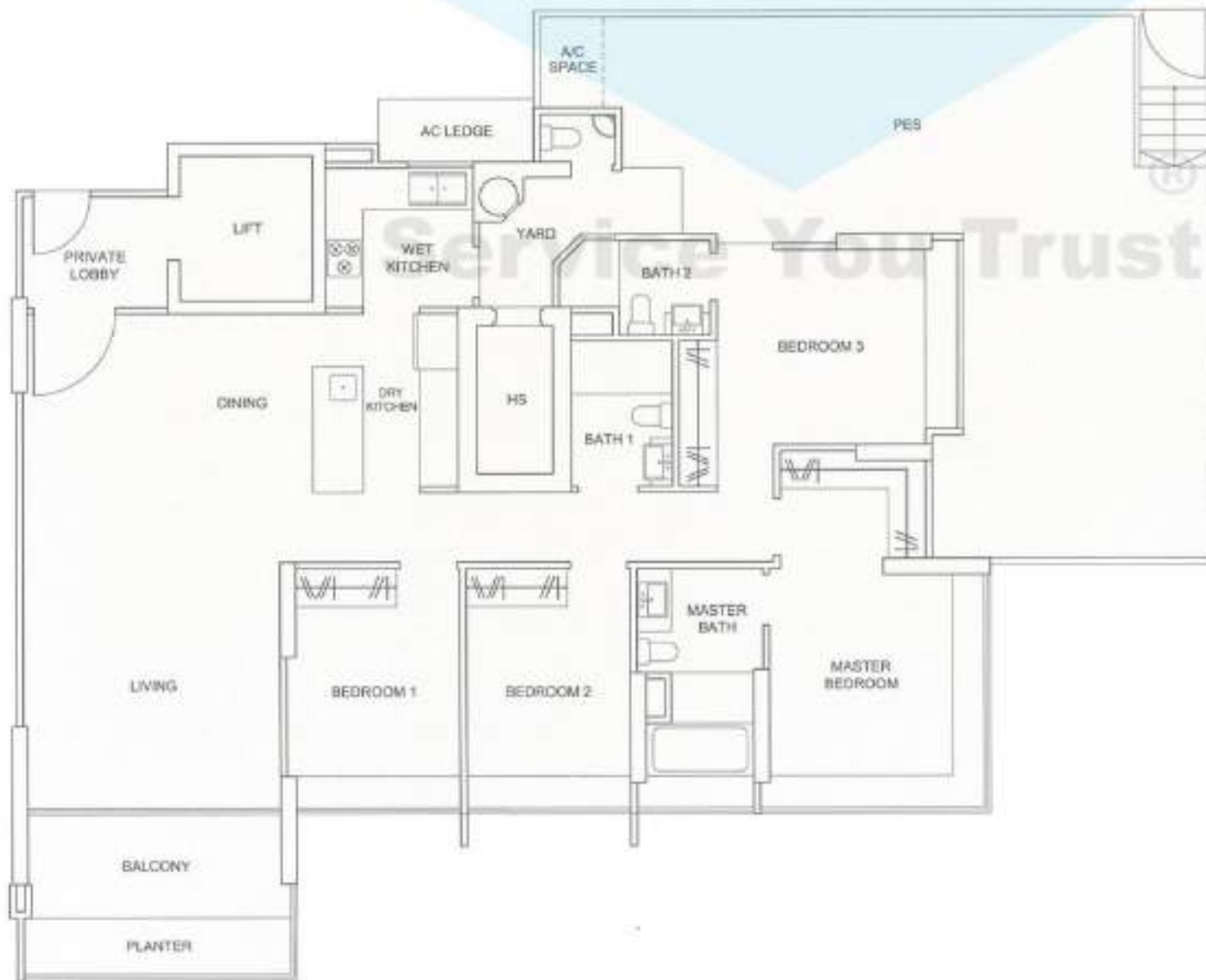
3 Bedroom

126 sqm / 1356 sqft

#02-03 – #25-03



The above plans are subject to change and approval by the relevant authority. Areas are approximate and subject to final survey. Plans are not to scale.



TYPE D1a

4 Bedroom

215 sqm / 2314 sqft

#01-01



The above plans are subject to change and approval by the relevant authority. Areas are approximate and subject to final survey. Plans are not to scale.

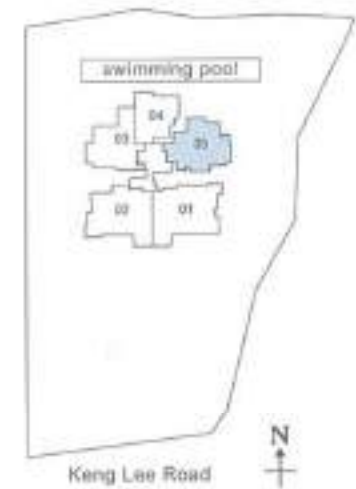


TYPE B1

3 Bedroom

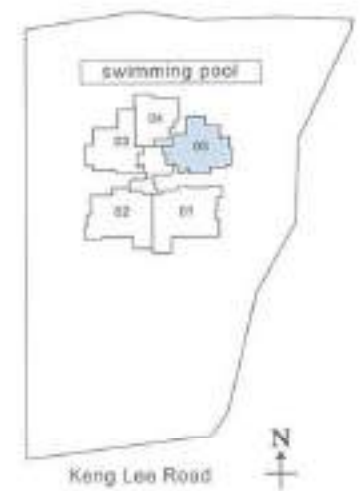
133 sqm / 1432 sqft

#02-05 – #05-05





TYPE B2
 3 Bedroom
 137 sqm / 1475 sqft
 #06-05



The above plans are subject to change and approval by the relevant authority. Areas are approximate and subject to final survey. Plans are not to scale.

TYPE B3a

3 Bedroom

165 sqm / 1776 sqft

#01-03

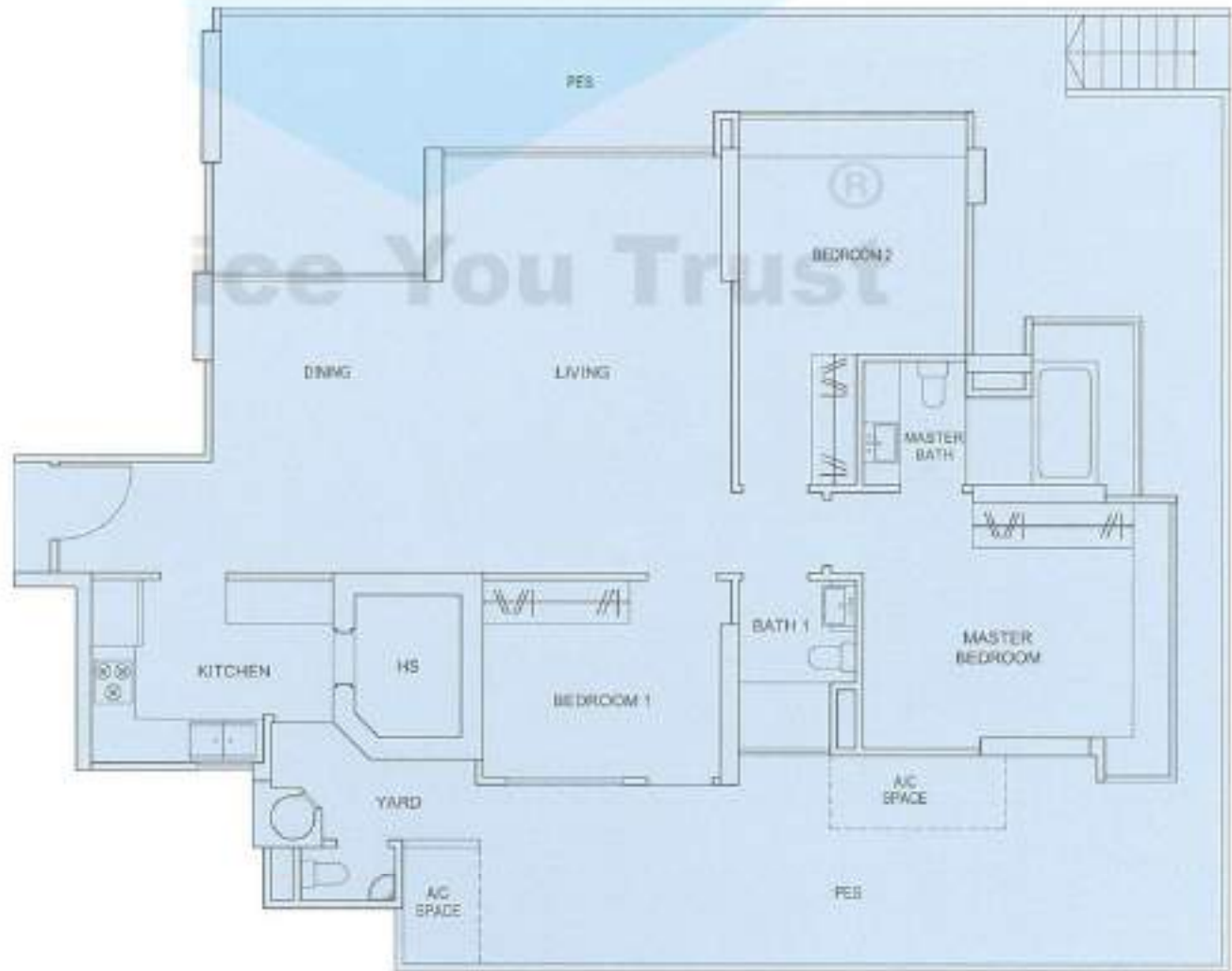


TYPE B1a

3 Bedroom

188 sqm / 2024 sqft

#01-05



The above plans are subject to change and approval by the relevant authority. Areas are approximate and subject to final survey. Plans are not to scale.