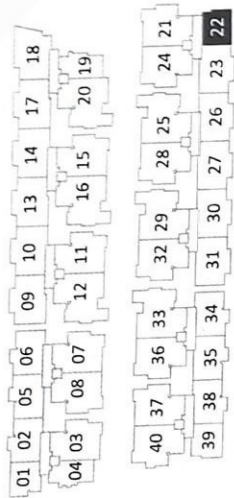
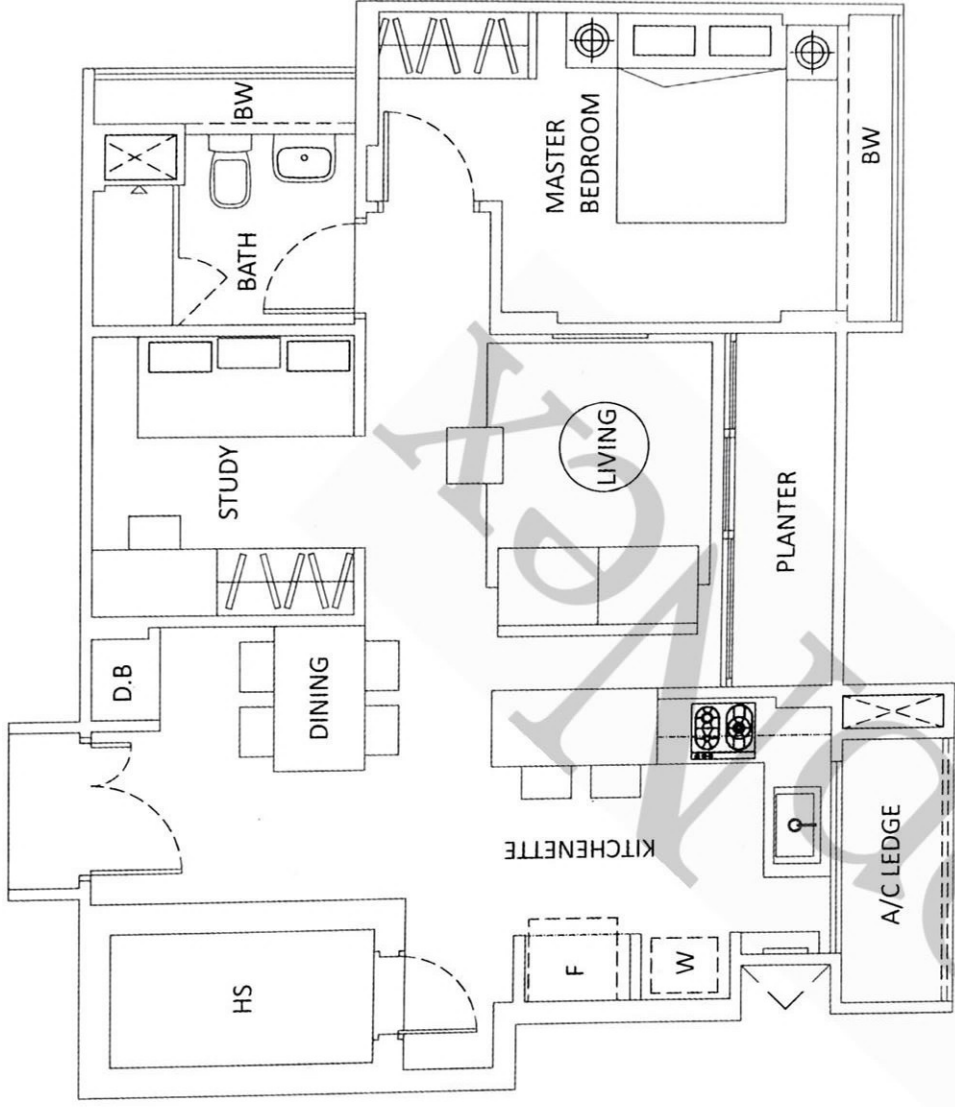


TYPE A

(63sqm/ 678sqft)

Blk G1 : #02-04 to #04-04

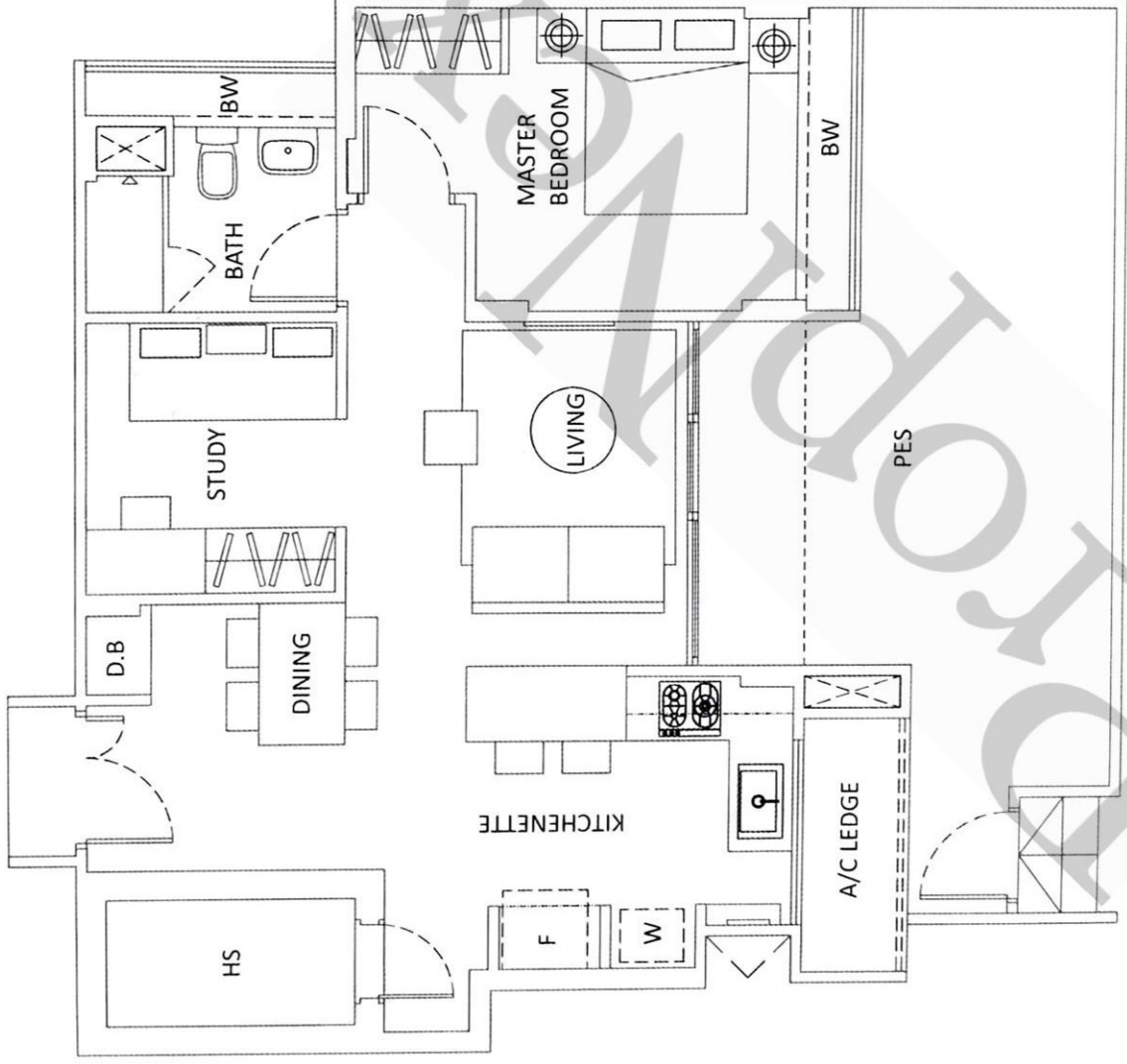


TYPE AS

(66sqm/ 710sqft)

Blk 65 : #02-22 to #04-22

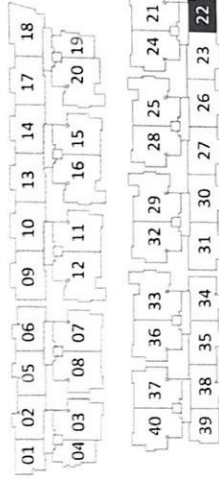
Measurements and subject to final survey. Plans are not to scale.



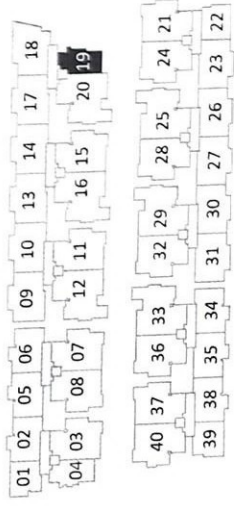
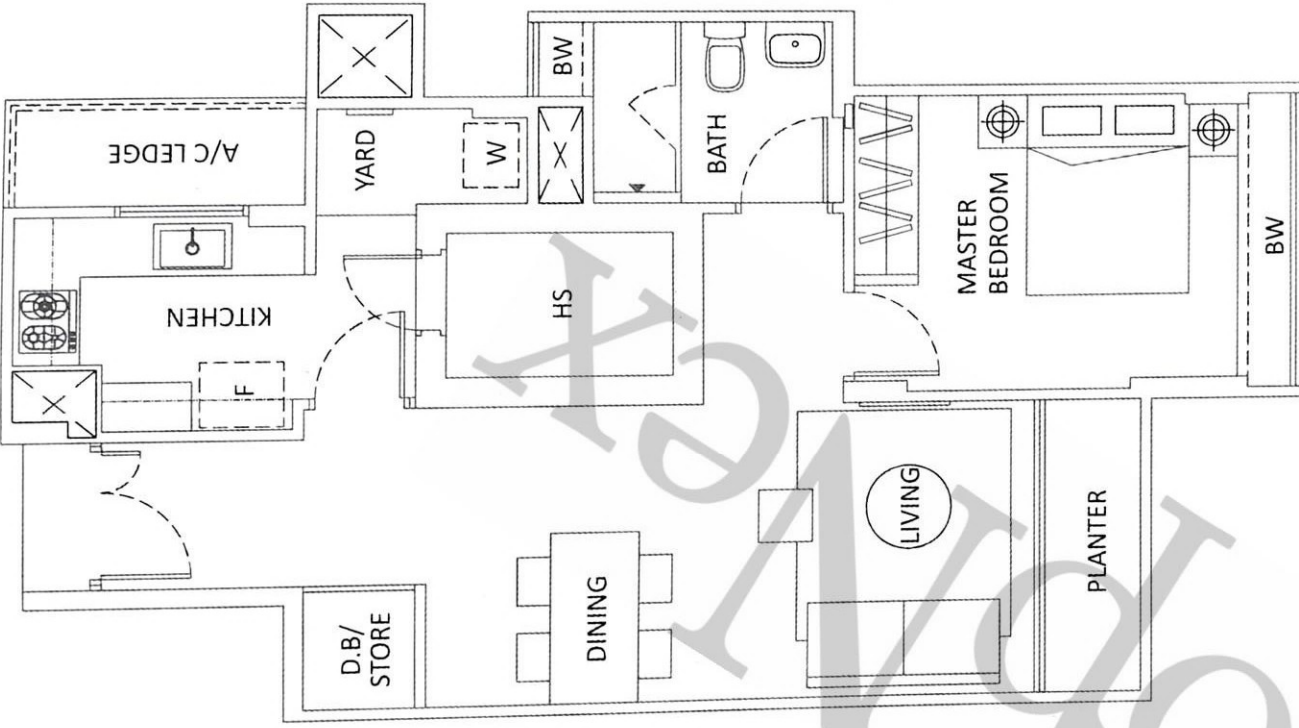
TYPE ASG

(85sqm/ 915sqft)

Blk 65 : #01-22



The above plans are subject to change as may be approved by the relevant authorities. Areas are approximate measurements and subject to final survey. Plans are not

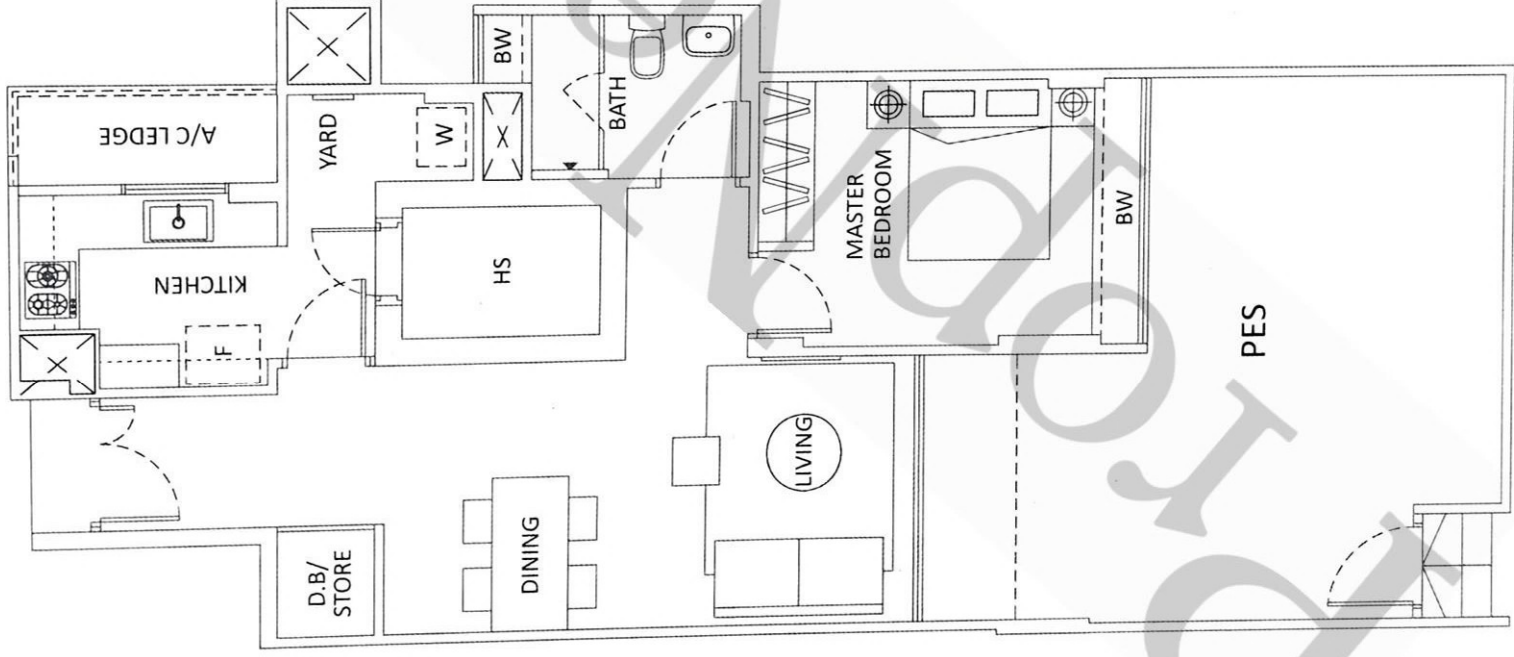


TYPE A1

(62sqm/ 667sqft)

Bk 63 : #02-19 to #04-19

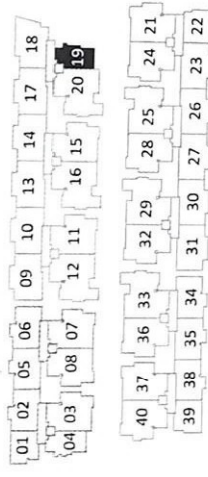
imate measurements and subject to final survey. Plans are not to scale.



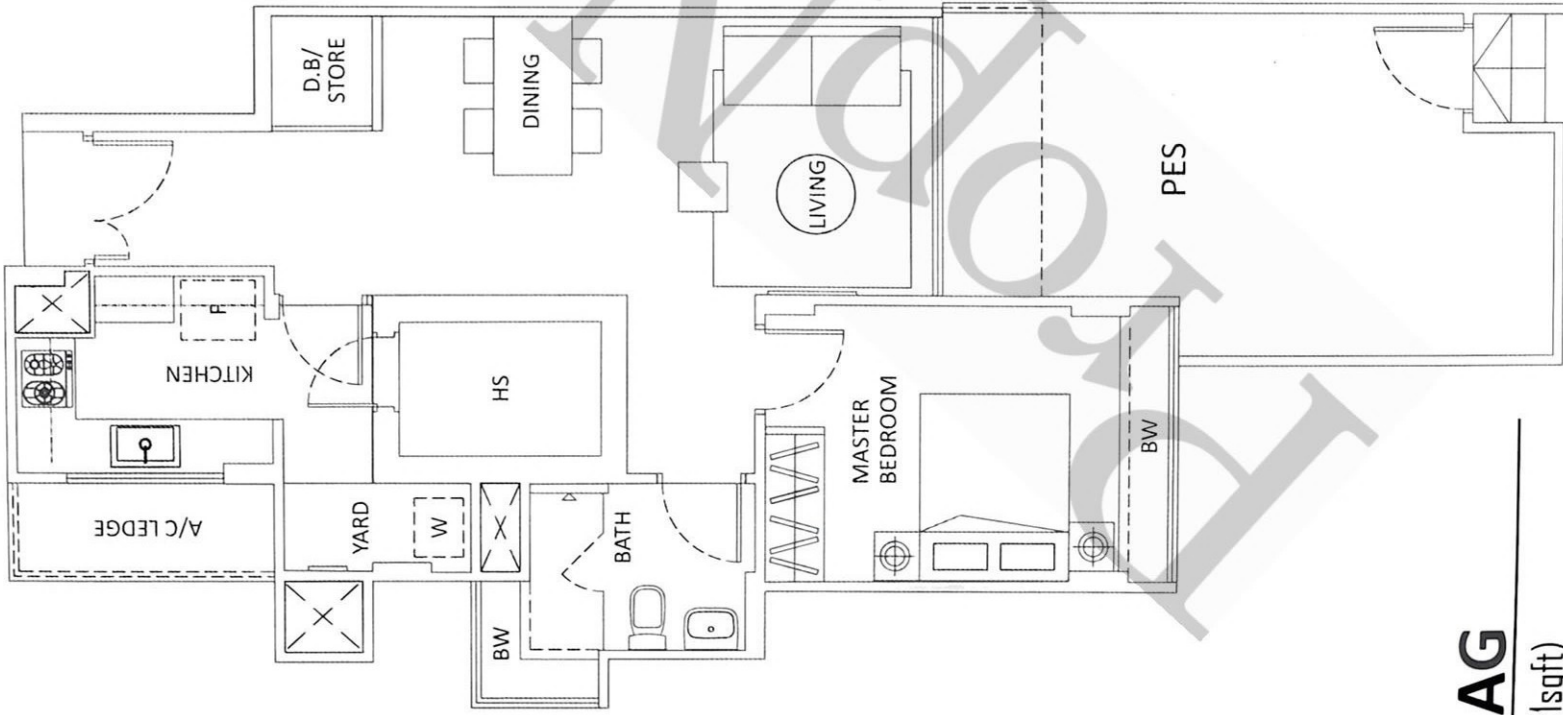
TYPE A1G

(88sqm/ 947sqft)

Blk 63 : #01-19



The above plans are subject to change as may be approved by the relevant authorities. Areas are approximate measurements and subject to final survey. Plans are not to scale.



TYPE AG

(80sqm/ 861sqft)

Blk 61 : #01-04



The above plans are subject to change as may be approved by the relevant authorities. Areas are approximate measurements and subject to final survey. Plans are not to scale.