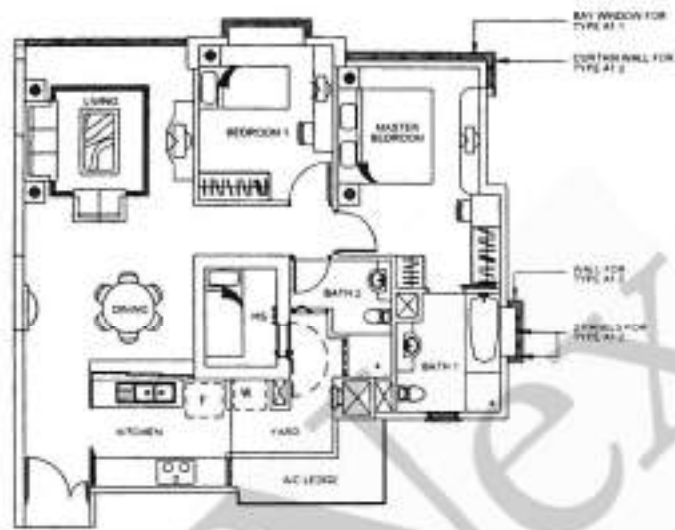


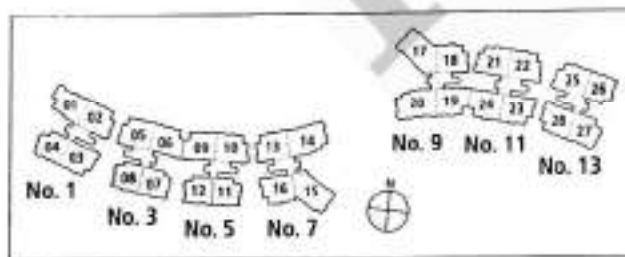
**2-bedroom Apartment**



**Type A1-1** (93 sq m/1002 sq ft)

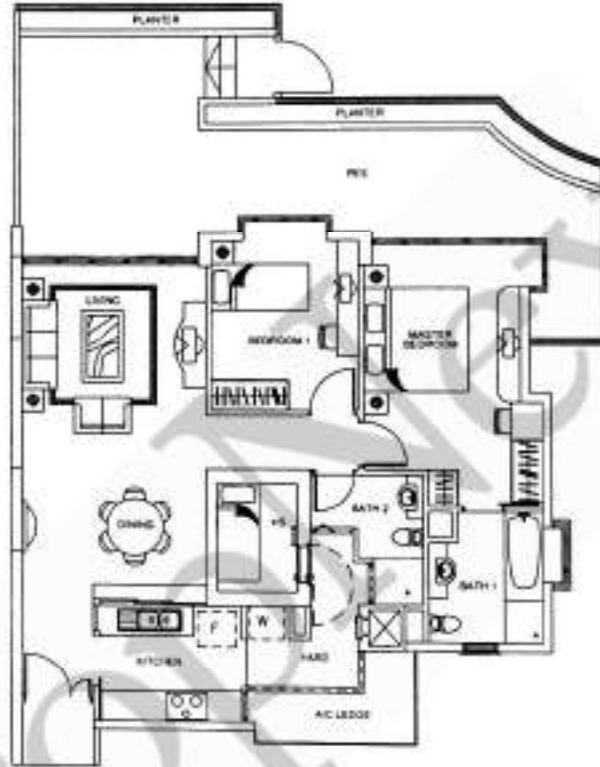
(incl. of a/c ledge)

#11-26



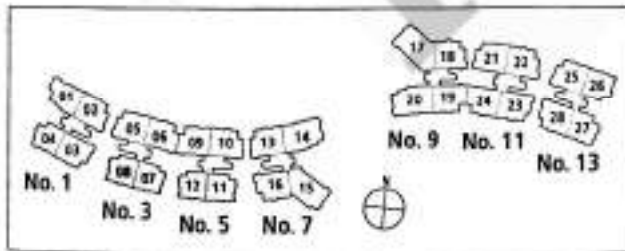
The above plans are subject to change as may be approved by the relevant authorities. Areas are approximate measurements and subject to final survey.

**2-bedroom Apartment**



**Type A1(p)** (135 sq m/1454 sq ft)  
 (incl. of air ledge, PES & planter)

#01-26



The above plans are subject to change as maybe approved by the relevant authorities. Areas are approximate measurements and subject to final survey

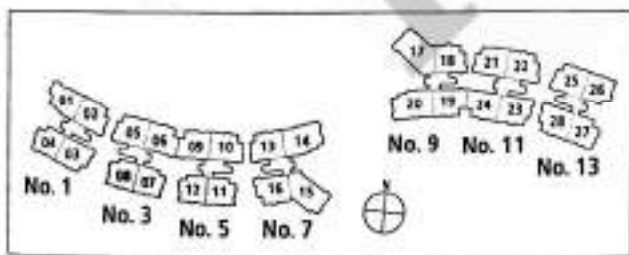
2-bedroom Apartment



**Type A1** (94 sq m/1012 sq ft)

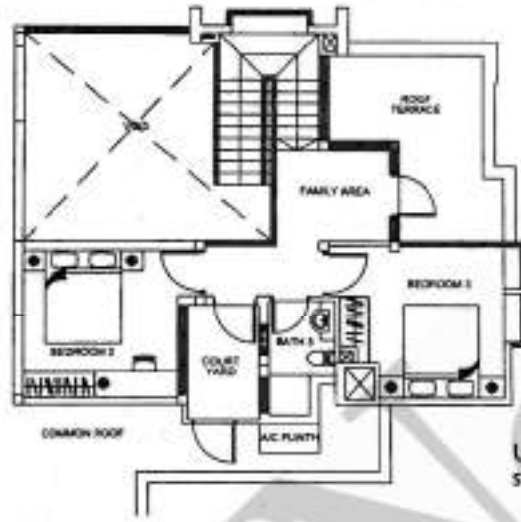
(incl. of a/c ledge & planter)

- #04-07 – #14-07
- #04-08 – #14-08
- #04-11 – #12-11
- #04-12 – #12-12
- #02-26 – #10-26



The above plans are subject to change as maybe approved by the relevant authorities. Areas are approximate measurements and subject to final survey

Penthouse

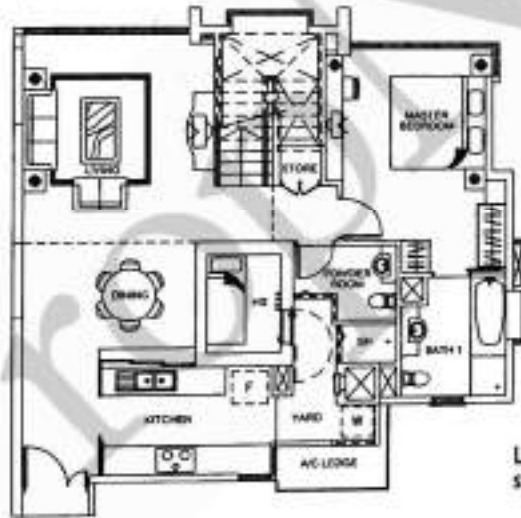


**Type P1** (173 sq m/1863 sq ft)

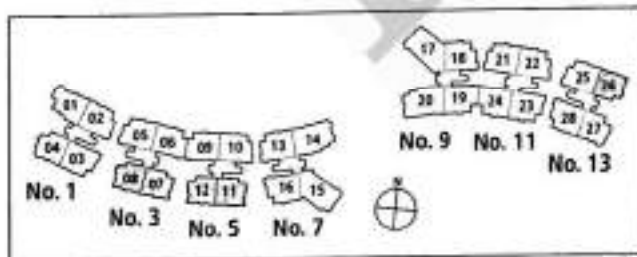
(incl. of a/c ledge, roof terrace & void)

#13-26

Upper storey

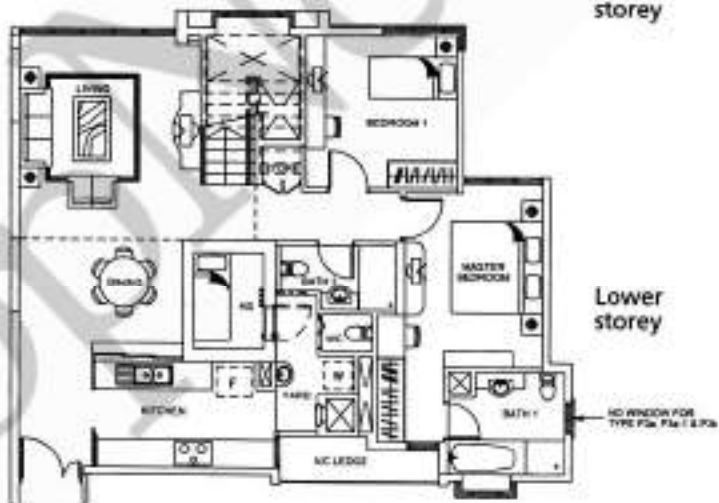
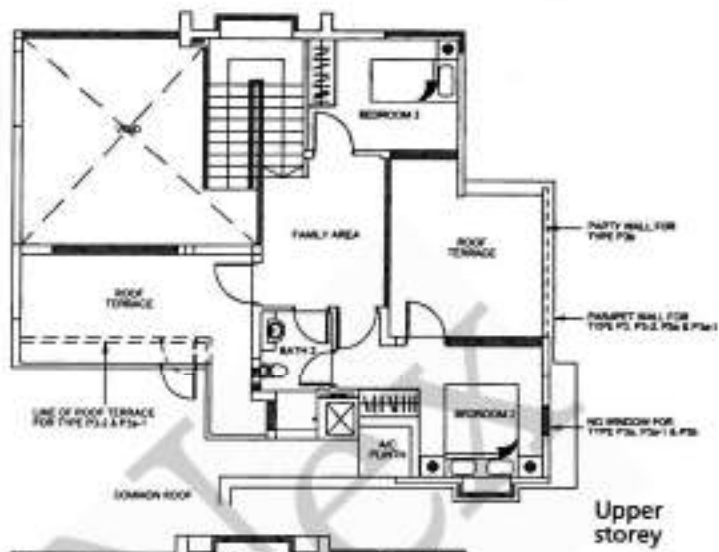


Lower storey



The above plans are subject to change as maybe approved by the relevant authorities. Areas are approximate measurements and subject to final survey.

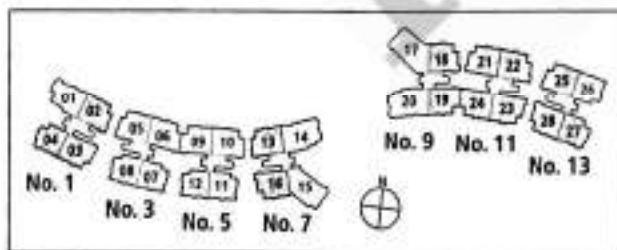
# Penthouse



## Type P3 (200 sq m/2153 sq ft)

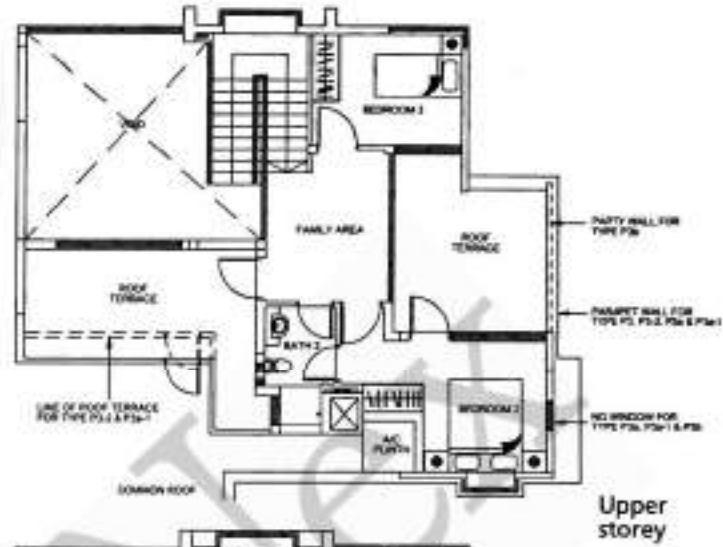
(incl. of a/c ledge, roof terrace & void)

#18-03  
 #13-25, #13-28,  
 #17-13, #17-16,  
 #17-22, #17-23

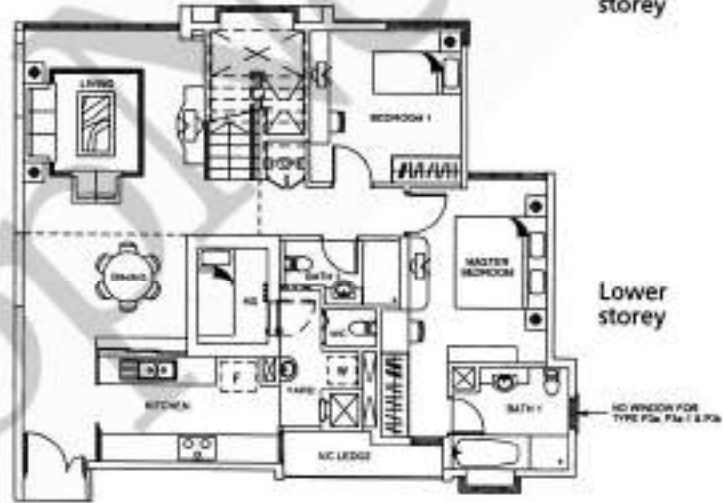


The above plans are subject to change as maybe approved by the relevant authorities. Areas are approximate measurements and subject to final survey.

Penthouse



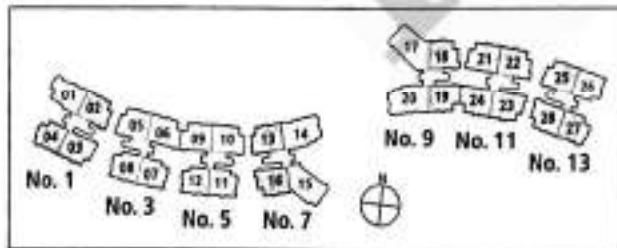
Upper storey



Lower storey

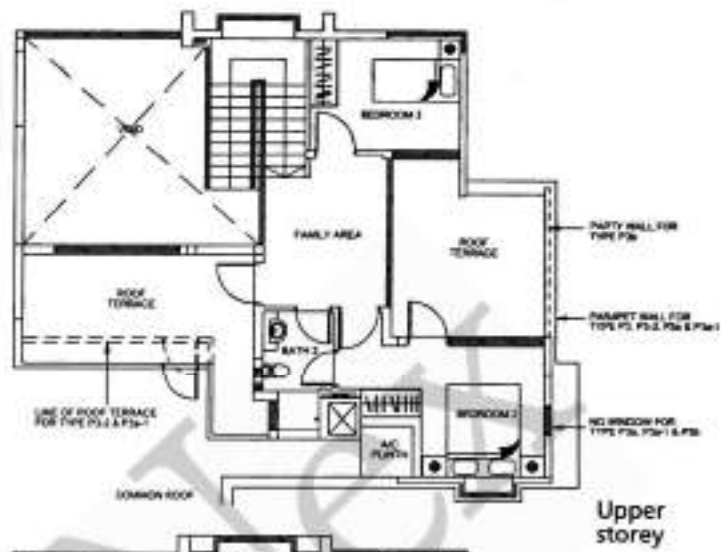
**Type P3-2** (198 sq m/2132 sq ft)  
(incl. of a/c ledge, roof terrace & void)

#18-02

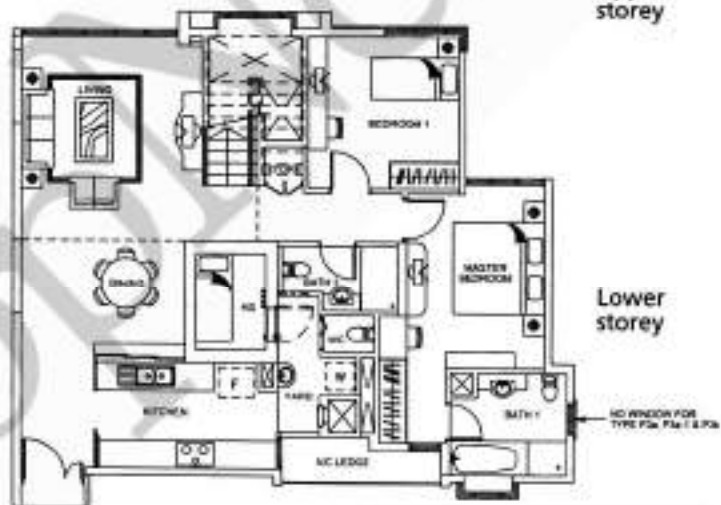


The above plans are subject to change as maybe approved by the relevant authorities. Areas are approximate measurements and subject to final survey.

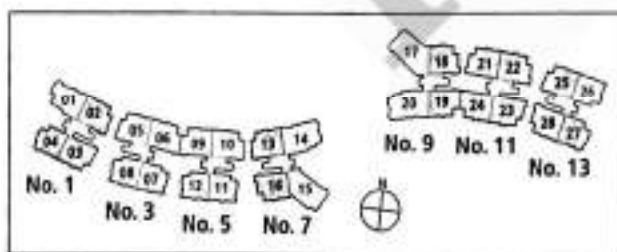
Penthouse



Upper storey



Lower storey



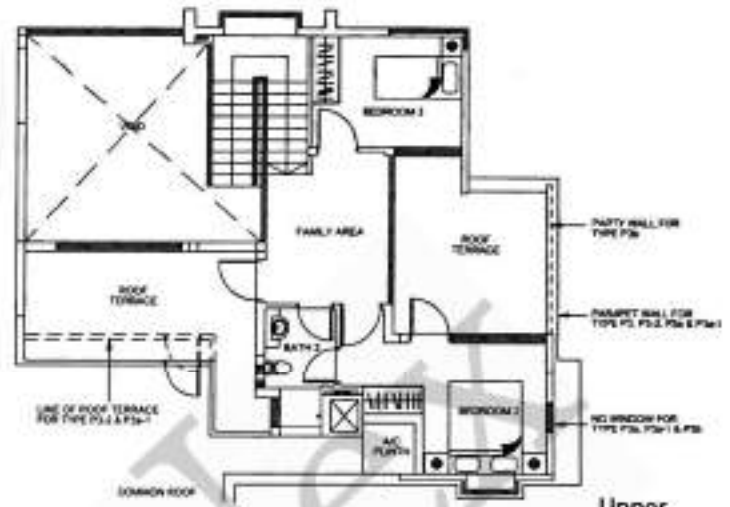
**Type P3a-1** (198 sq m/2132 sq ft)

(incl. of a/c ledge, roof terrace & void)

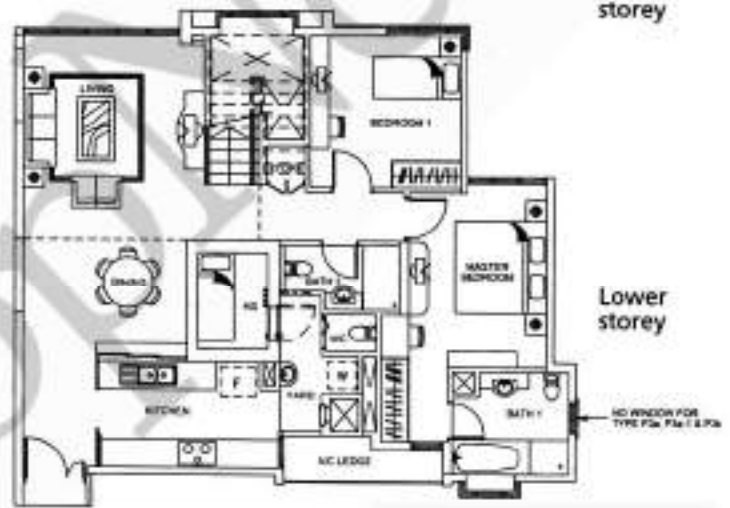
#17-18

The above plans are subject to change as maybe approved by the relevant authorities. Areas are approximate measurements and subject to final survey.

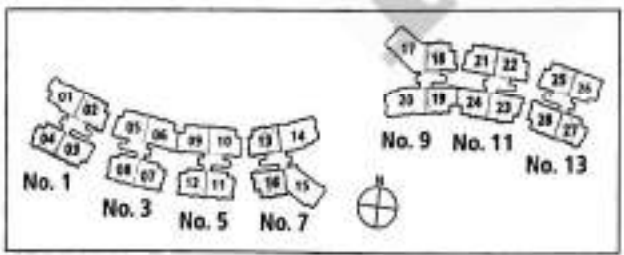
Penthouse



Upper storey



Lower storey



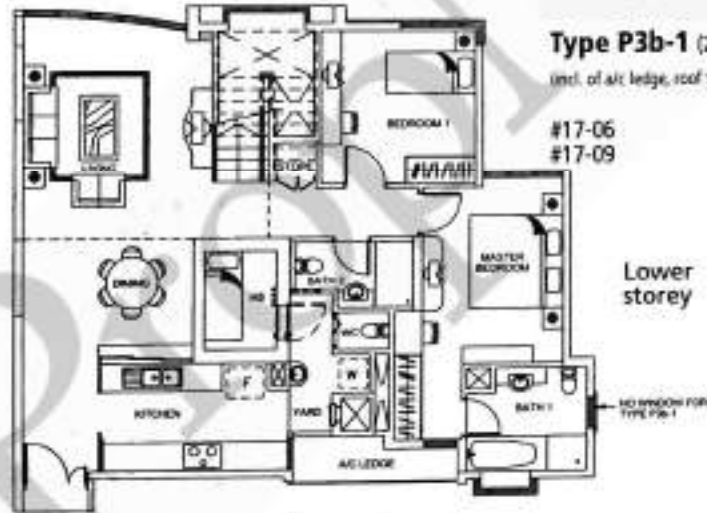
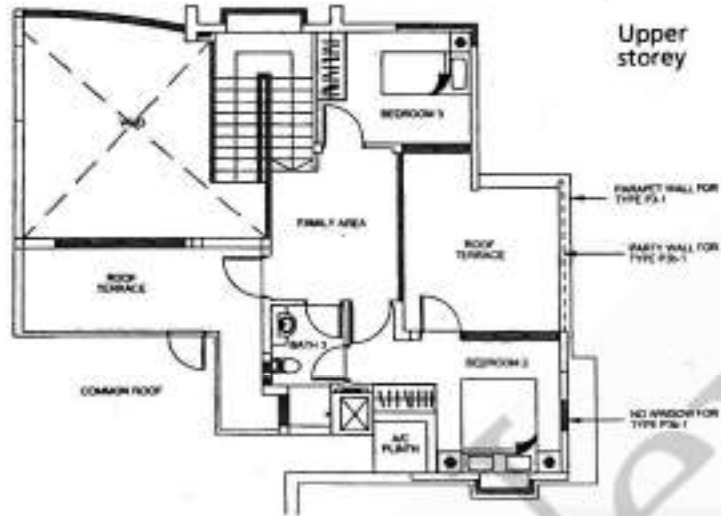
**Type P3b** (200 sq m/2153 sq ft)  
 (incl. of air ledge, roof terrace & void)

- #17-19
- #17-24

The above plans are subject to change as maybe approved by the relevant authorities. Areas are approximate measurements and subject to final survey.



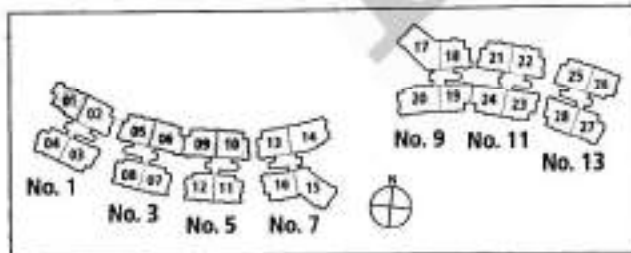
# Penthouse



**Type P3b-1** (200 sq m/2153 sq ft)

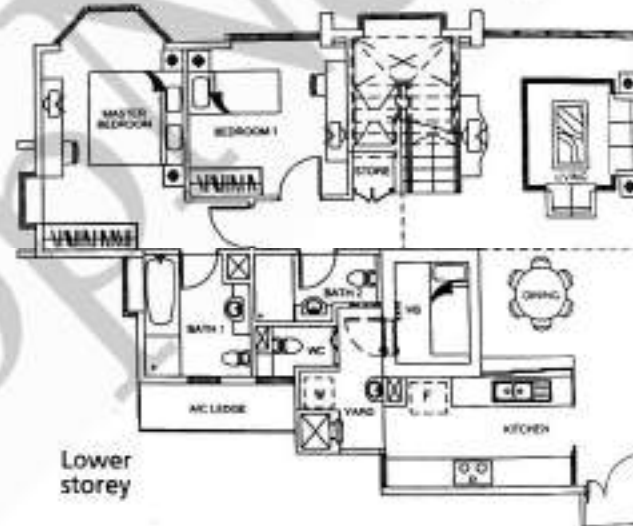
(incl. of air ledge, roof terrace & void)

#17-06  
#17-09



The above plans are subject to change as maybe approved by the relevant authorities. Areas are approximate measurements and subject to final survey.

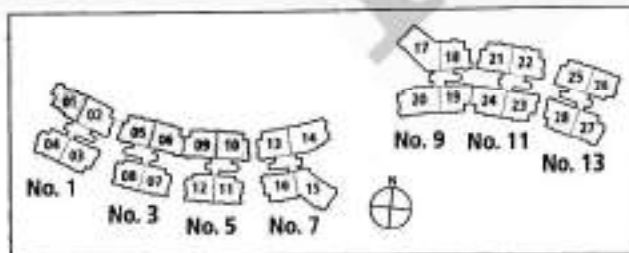
# Penthouse



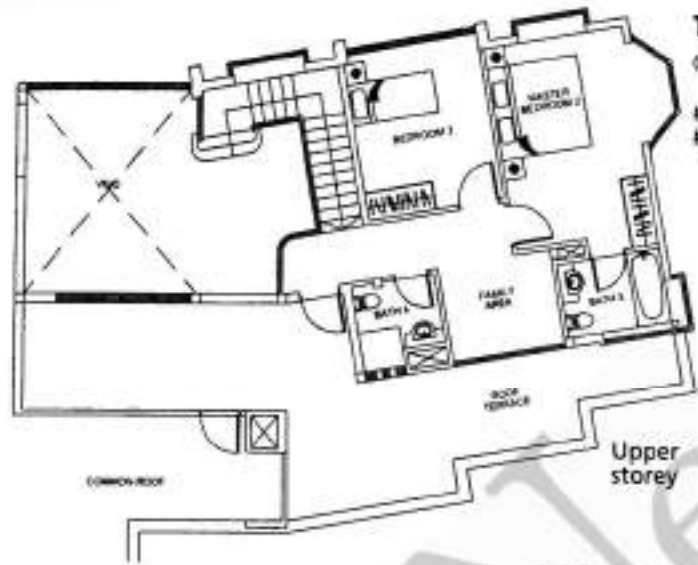
## Type P4 (199 sq m/2143 sq ft)

(incl. of a/c ledge, roof terrace & void)

#18-01

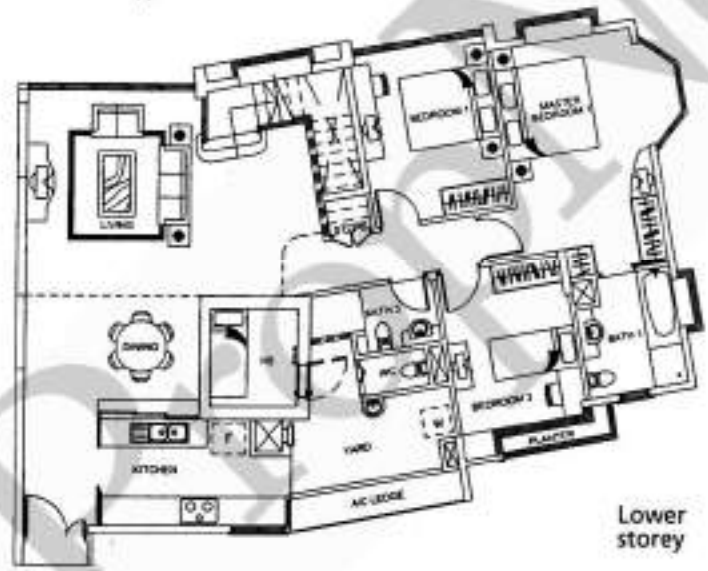


The above plans are subject to change as maybe approved by the relevant authorities. Areas are approximate measurements and subject to final survey.

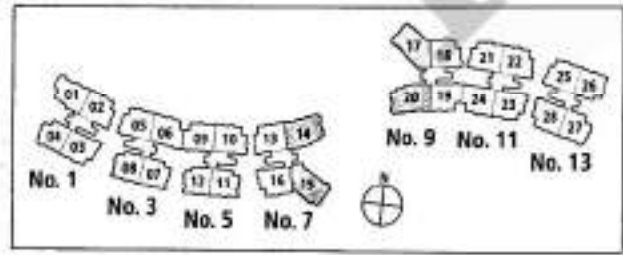


**Type P5** (255 sq m/2745 sq ft)  
(incl. of ac ledge, roof terrace & void)  
#17-14  
#17-20

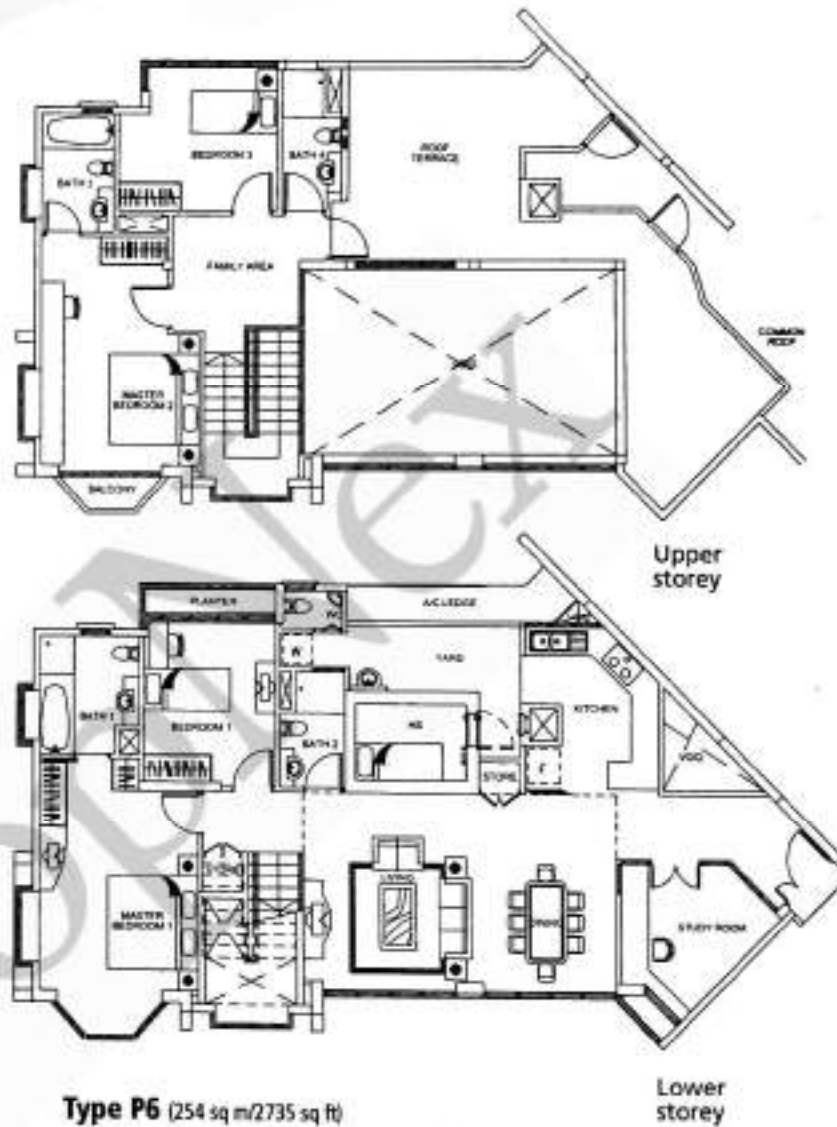
Upper storey



Lower storey



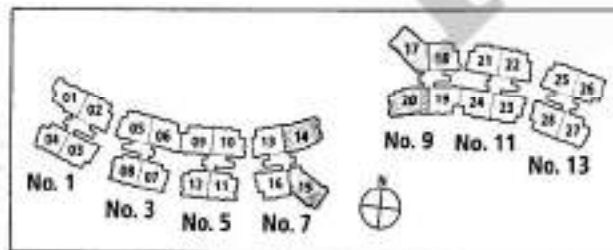
The above plans are subject to change as maybe approved by the relevant authorities. Areas are approximate measurements and subject to final survey.



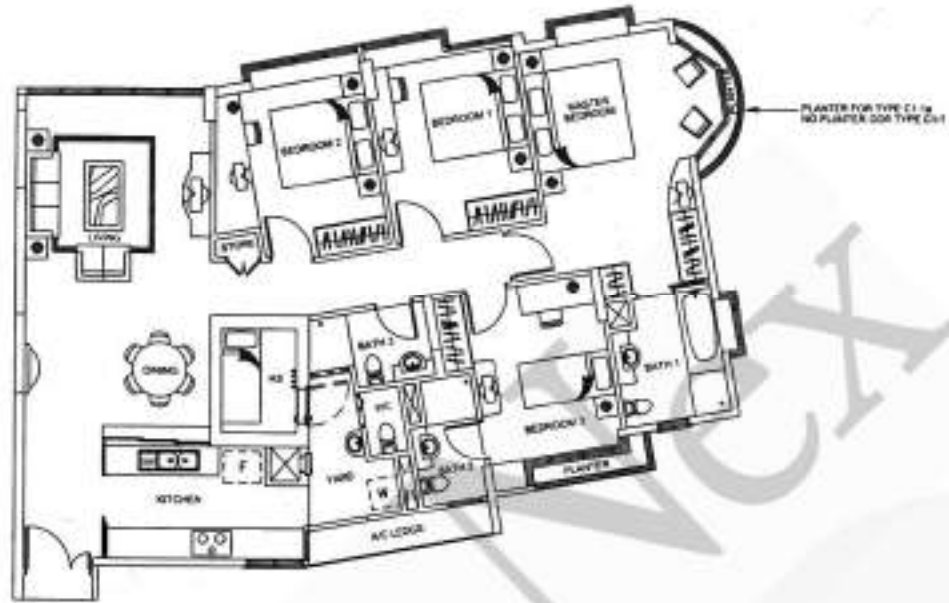
**Type P6 (254 sq m/2735 sq ft)**

(Incl. of planter, a/c ledge, open balcony, roof terrace & void)

#17-15  
#17-17



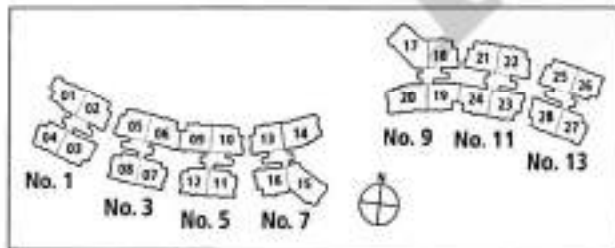
The above plans are subject to change as maybe approved by the relevant authorities. Areas are approximate measurements and subject to final survey.



**Type C1-1a** (137 sq m/1475 sq ft)

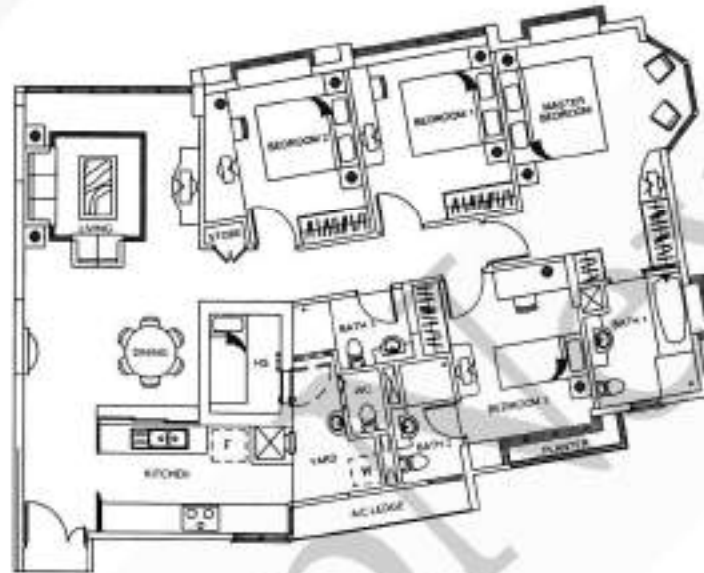
(incl. of air ledge & planter)

#12-14 – #14-14



The above plans are subject to change as maybe approved by the relevant authorities. Areas are approximate measurements and subject to final survey

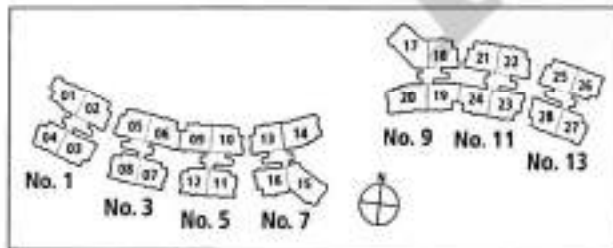
4-bedroom Apartment



**Type C1-2** (135 sq m/1454 sq ft)

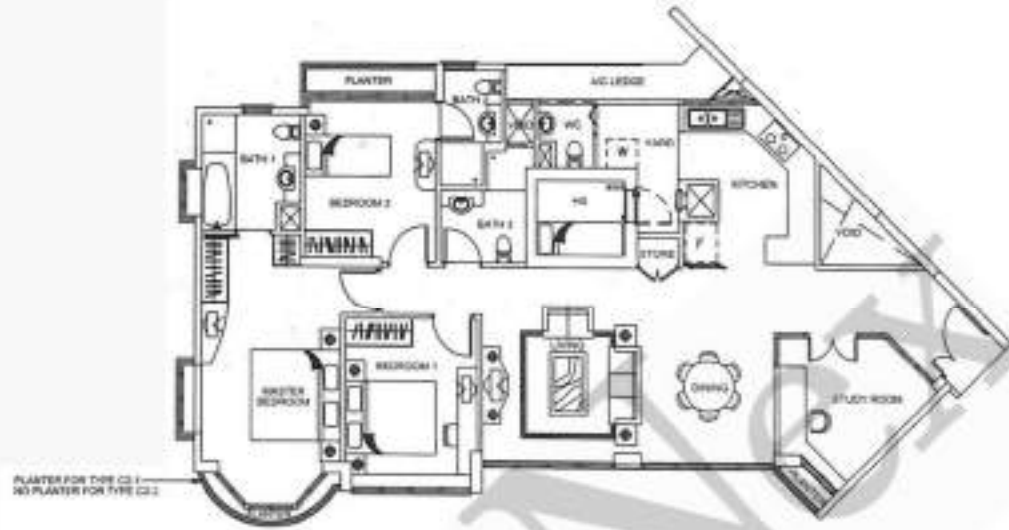
(incl. of alc ledge & planter)

#16-20



The above plans are subject to change as maybe approved by the relevant authorities. Areas are approximate measurements and subject to final survey

**4-bedroom Apartment**

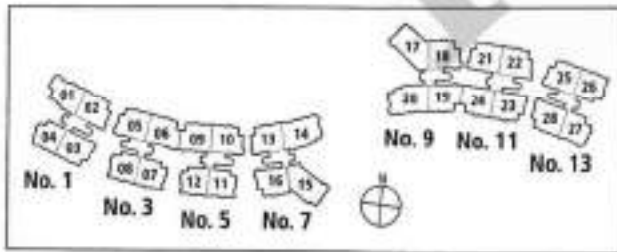


**Type C2-2 (132 sq m/1421 sq ft)**

(incl. of a/c ledge & planter)

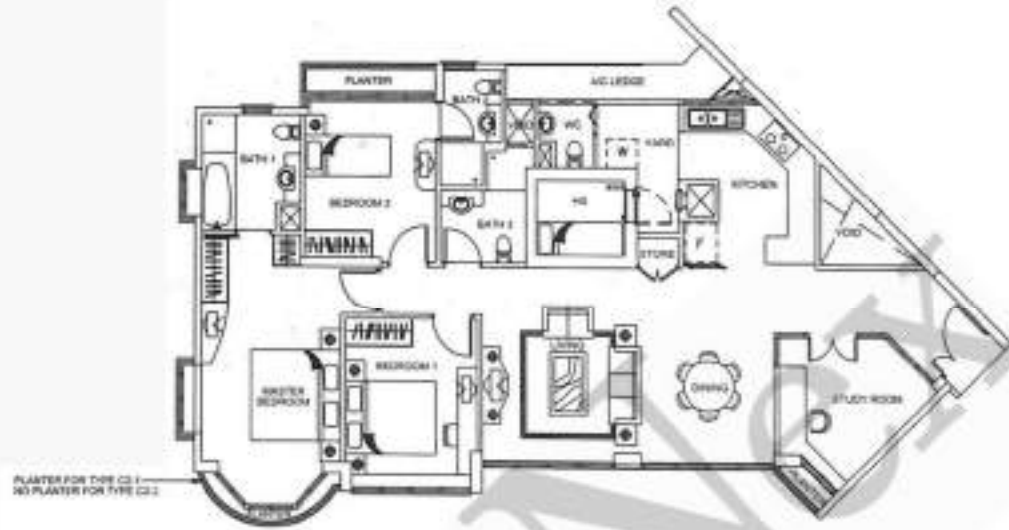
#15-15 – #16-15

#15-17 – #16-17



The above plans are subject to change as maybe approved by the relevant authorities. Areas are approximate measurements and subject to final survey.

**4-bedroom Apartment**

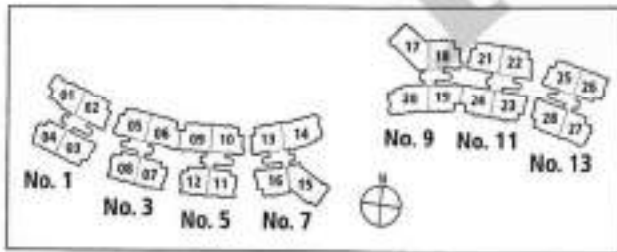


**Type C2-2 (132 sq m/1421 sq ft)**

(incl. of a/c ledge & planter)

#15-15 – #16-15

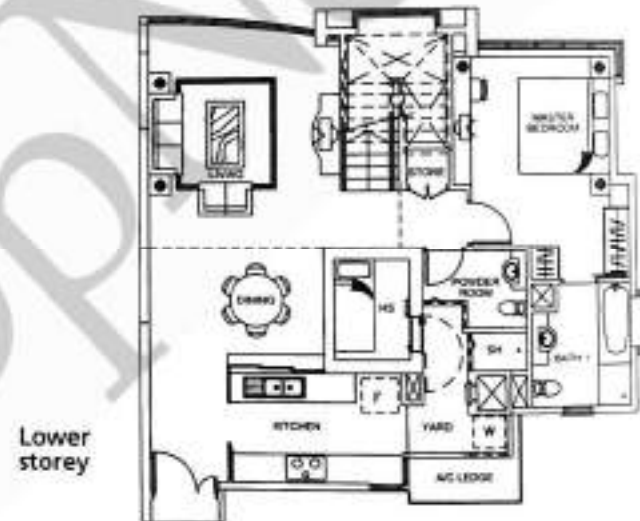
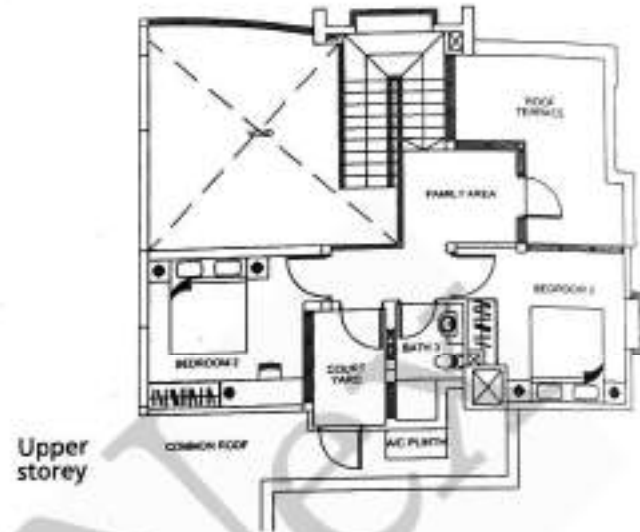
#15-17 – #16-17



The above plans are subject to change as maybe approved by the relevant authorities. Areas are approximate measurements and subject to final survey.



Penthouse

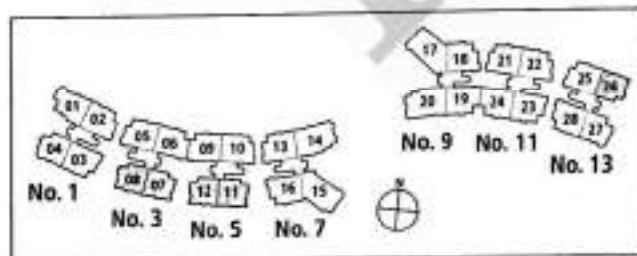


**Type P1-1** (175 sq m/1884 sq ft)

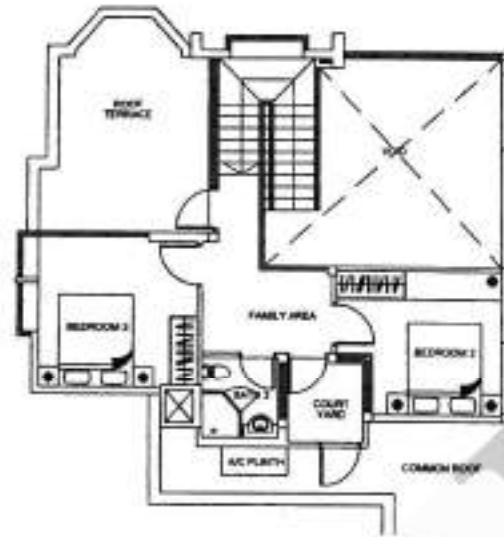
(incl. of ac ledge, roof terrace & void)

#17-07, #17-08

#17-11, #17-12



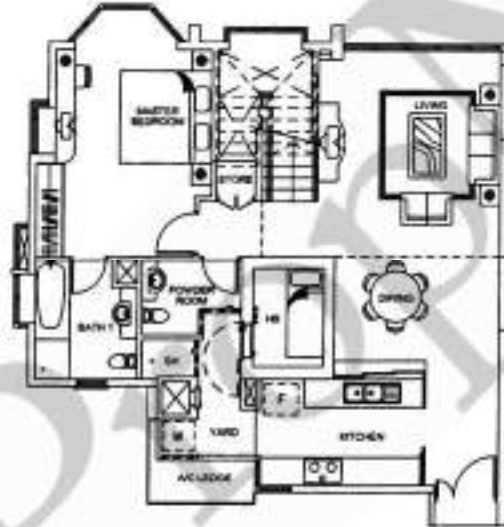
The above plans are subject to change as maybe approved by the relevant authorities. Areas are approximate measurements and subject to final survey.



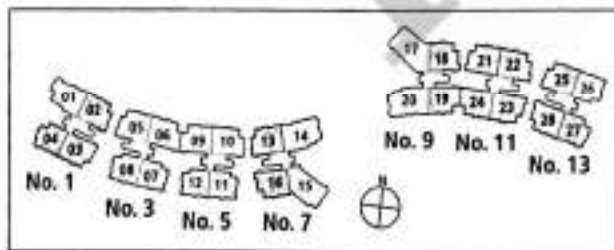
**Type P2** (177 sq m/1906 sq ft)  
(incl. of a/c ledge, roof terrace & void)

#18-04  
#13-27

Upper storey

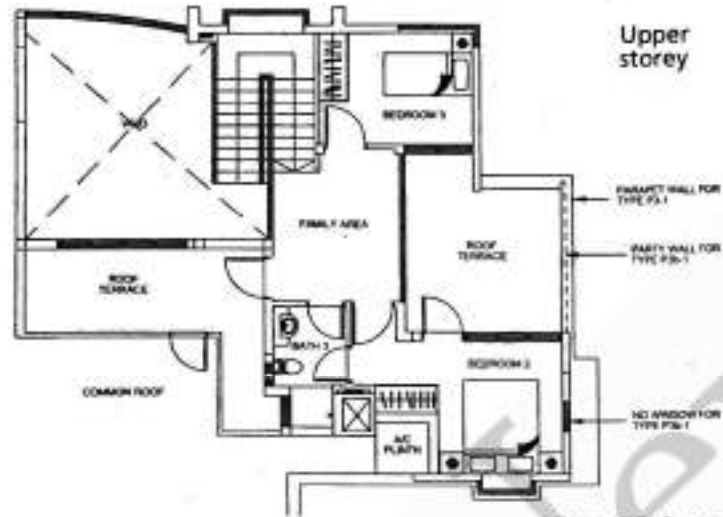


Lower storey



The above plans are subject to change as maybe approved by the relevant authorities. Areas are approximate measurements and subject to final survey.

# Penthouse

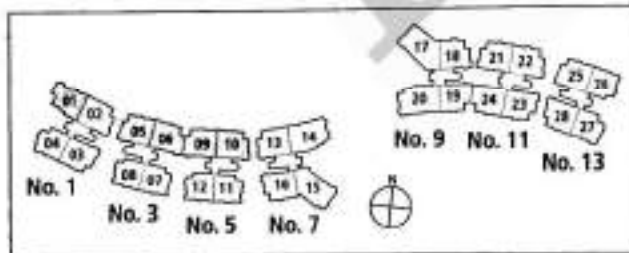
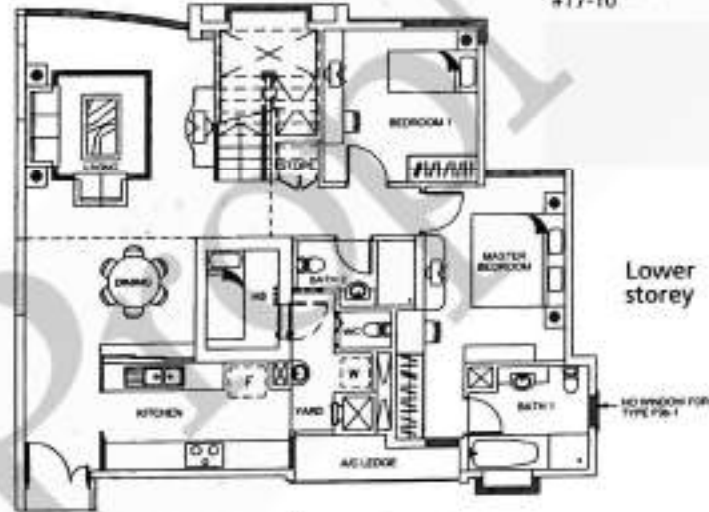


**Type P3-1** (200 sq m/2153 sq ft)

(incl. of a/c ledge, roof terrace & void)

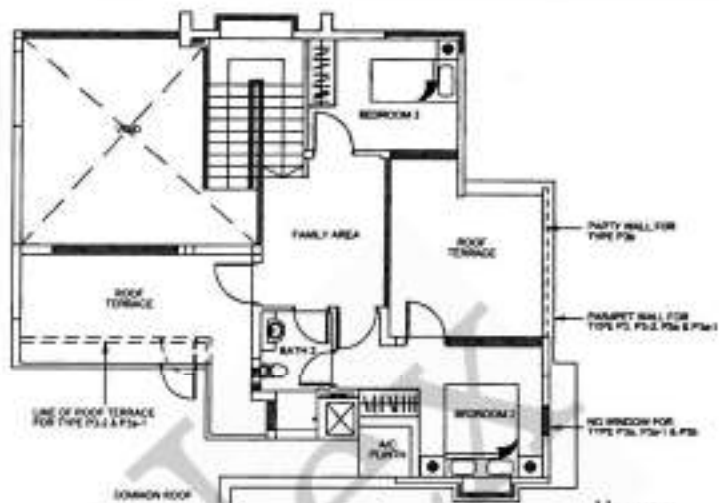
#17-05

#17-10

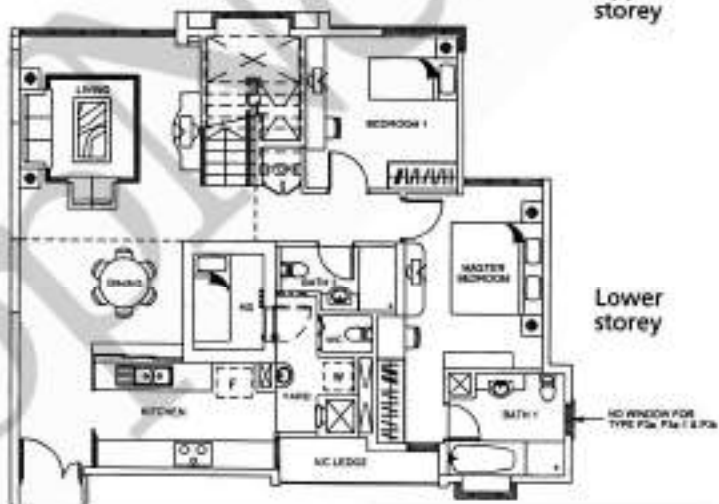


The above plans are subject to change as maybe approved by the relevant authorities. Areas are approximate measurements and subject to final survey.

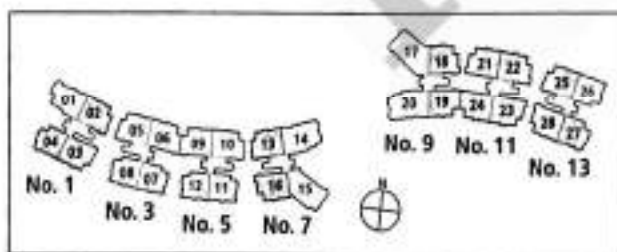
Penthouse



Upper storey



Lower storey

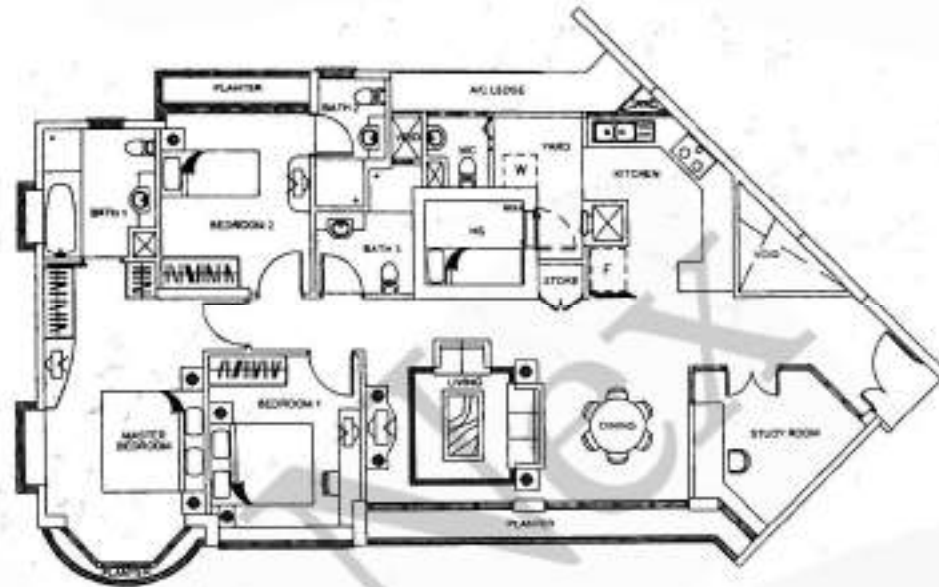


**Type P3a** (200 sq m/2153 sq ft)  
(incl. of a/c ledge, roof terrace & void)

#17-21

The above plans are subject to change as maybe approved by the relevant authorities. Areas are approximate measurements and subject to final survey.

**4-bedroom Apartment**

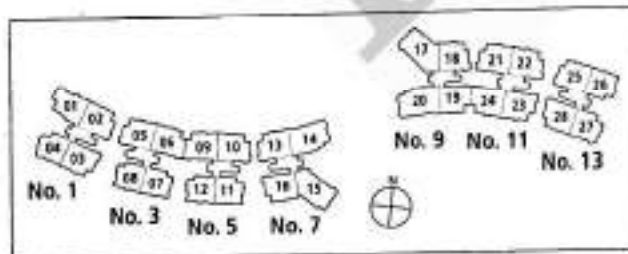


**Type C2 (137 sq m/1475 sq ft)**

(incl. of arc ledge & plaster)

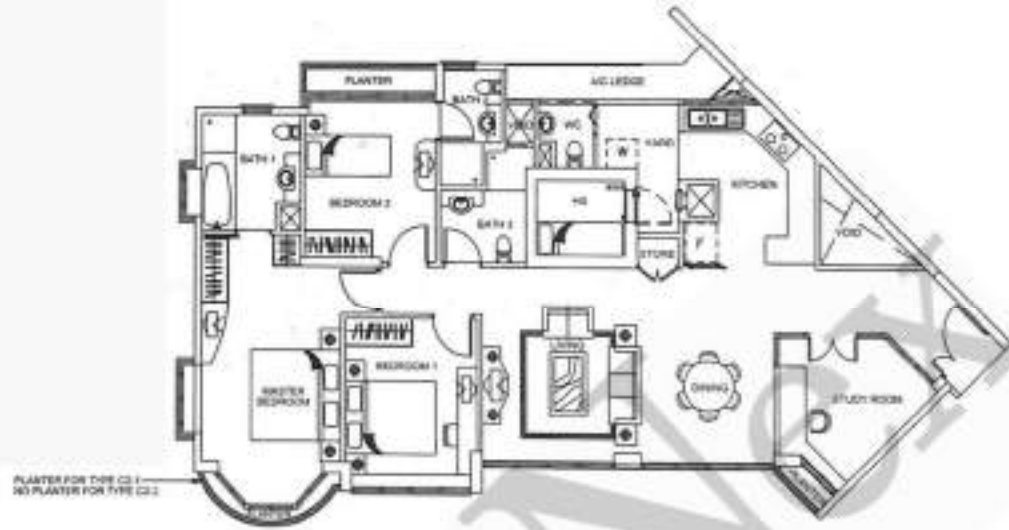
#03-15 – #11-15

#02-17 – #10-17



The above plans are subject to change as maybe approved by the relevant authorities. Areas are approximate measurements and subject to final survey.

4-bedroom Apartment

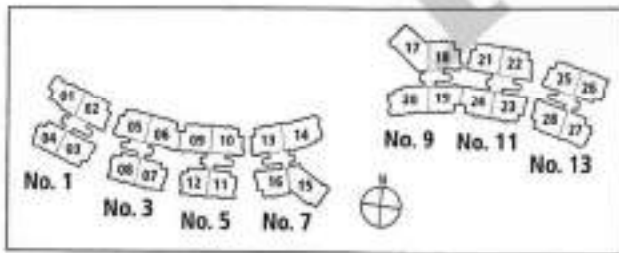


**Type C2-1** (133 sq m/1432 sq ft)

(incl. of a/c ledge & planter)

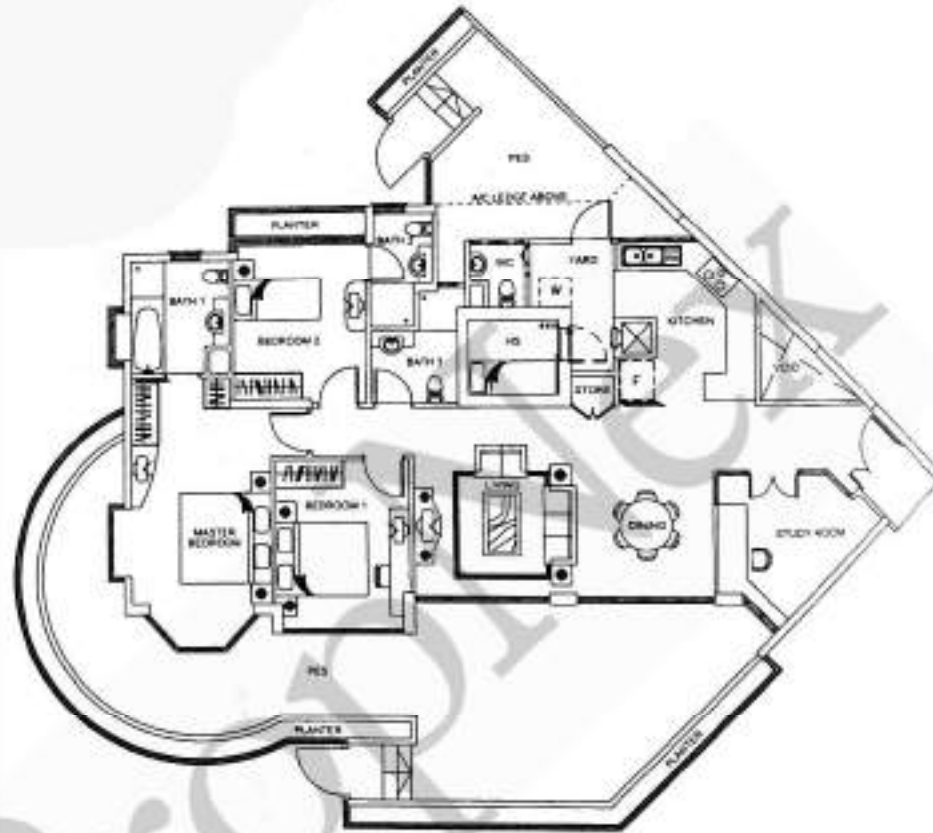
#12-15 – #14-15

#11-17 – #14-17



The above plans are subject to change as maybe approved by the relevant authorities. Areas are approximate measurements and subject to final survey.

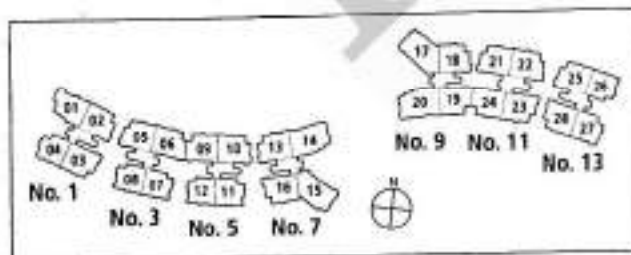
# 4-bedroom Apartment



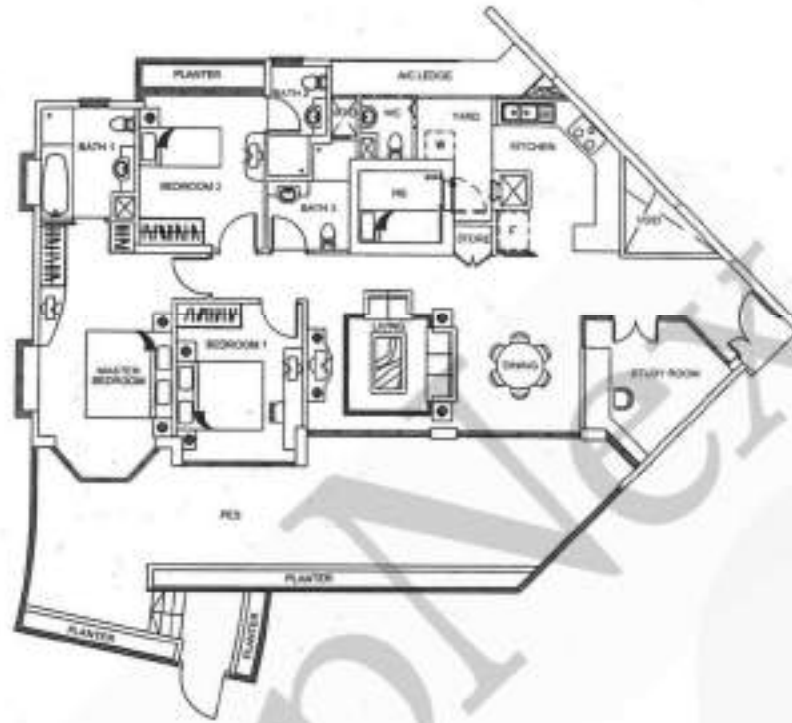
**Type C2(p)** (208 sq m/2239 sq ft)

(incl. of PES, a/c ledge & planter)

#01-17



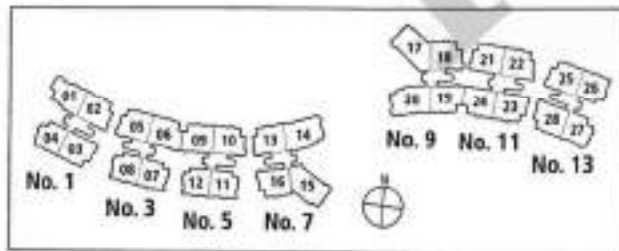
The above plans are subject to change as maybe approved by the relevant authorities. Areas are approximate measurements and subject to final survey.



**Type C2(p1)** (182 sq m/1960 sq ft)

(incl. of PES, a/c ledge & planter)

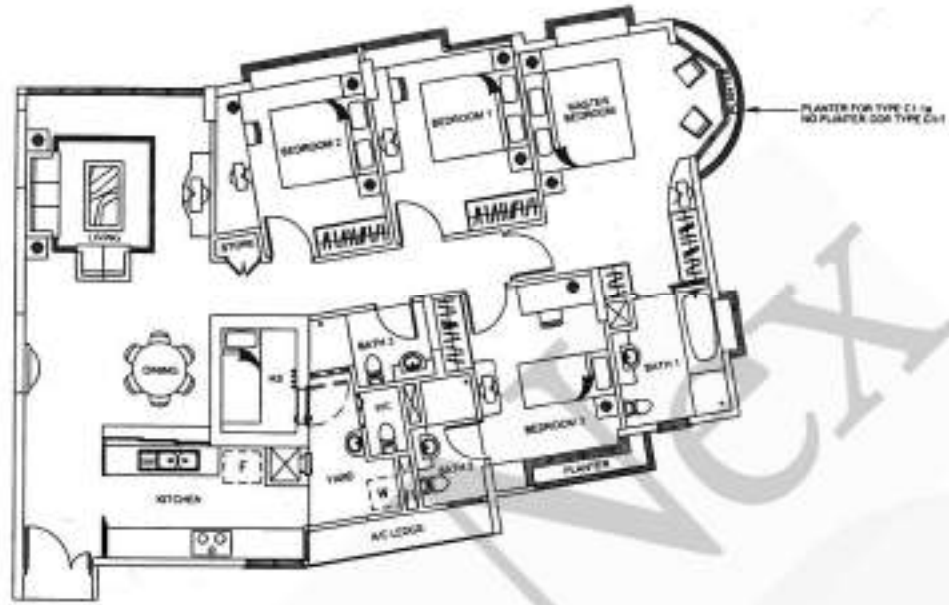
#02-15



The above plans are subject to change as maybe approved by the relevant authorities. Areas are approximate measurements and subject to final survey.



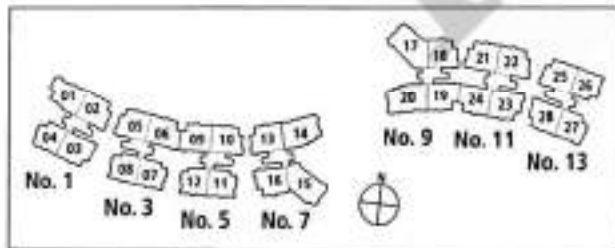
**4-bedroom Apartment**



**Type C1-1** (136 sq m/1464 sq ft)

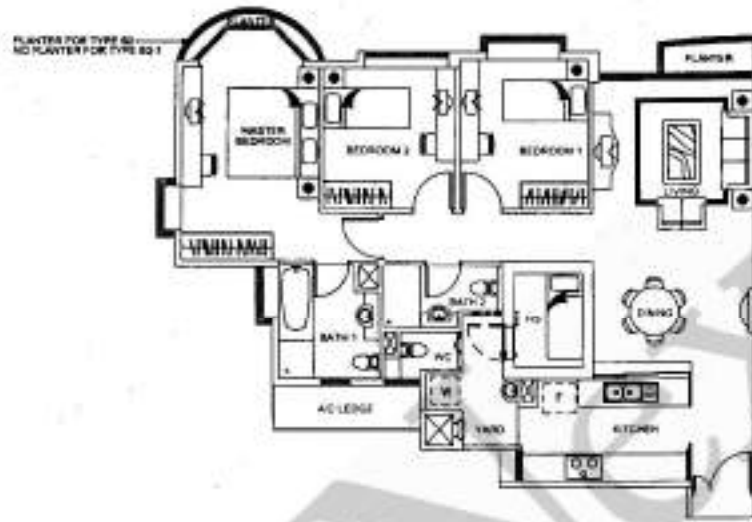
(incl. of a/c ledge & planter)

#15-14 – #16-14  
#15-20



The above plans are subject to change as maybe approved by the relevant authorities. Areas are approximate measurements and subject to final survey

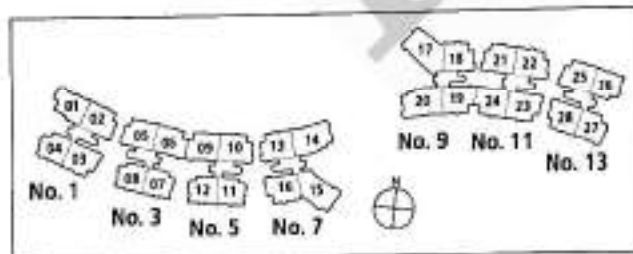
# 3-bedroom Apartment



**Type B2** (110 sq m/1185 sq ft)

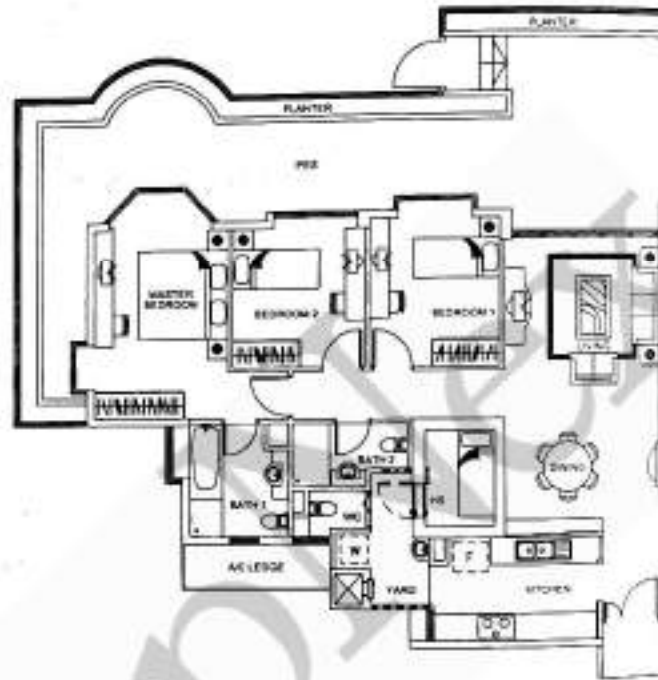
(incl. of air ledge & planter)

#02-01 – #14-01



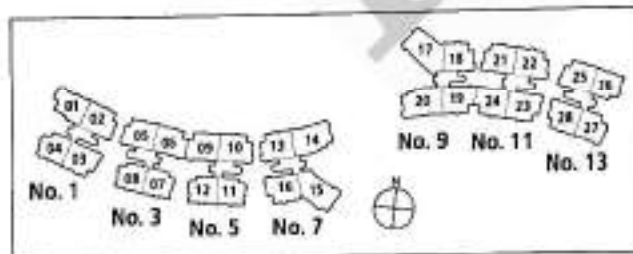
The above plans are subject to change as may be approved by the relevant authorities. Areas are approximate measurements and subject to final survey.

3-bedroom Apartment



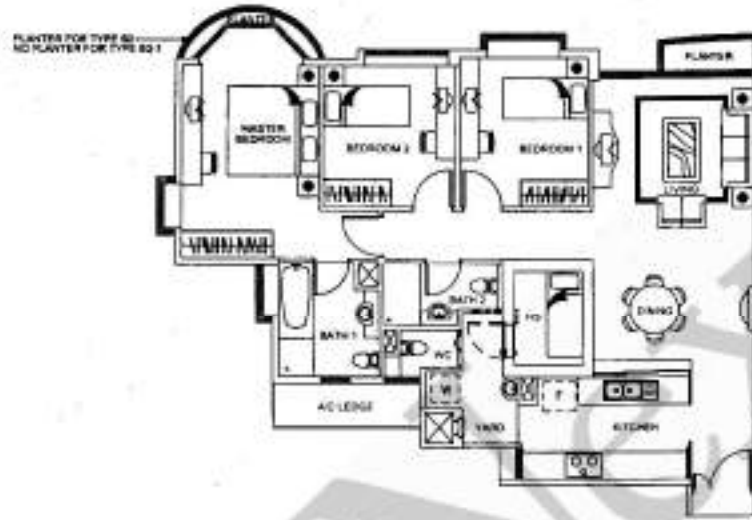
**Type B2(p)** (164 sq m/1766 sq ft)  
(incl. PES, air ledge & planter)

#01-01



The above plans are subject to change as maybe approved by the relevant authorities. Areas are approximate measurements and subject to final survey.

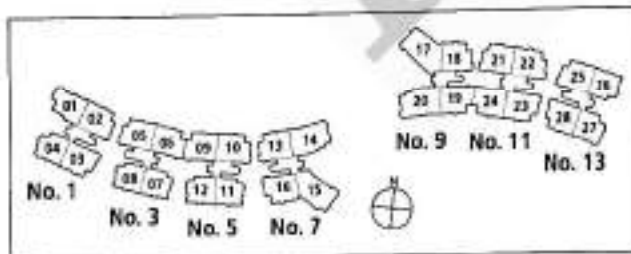
3-bedroom Apartment



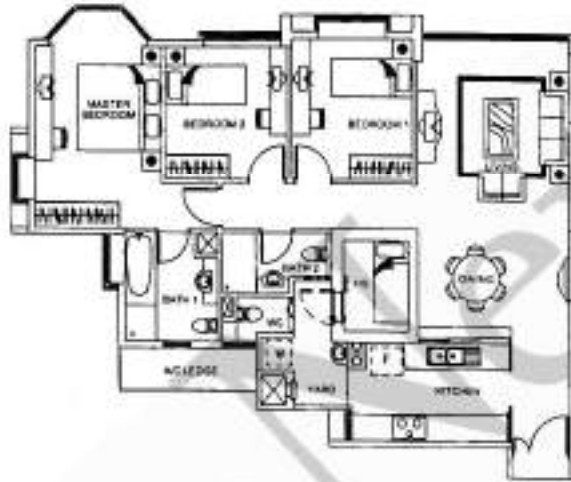
**Type B2-1** (109 sq m/1174 sq ft)

(incl. of ac ledge & planter)

#15-01 – #16-01

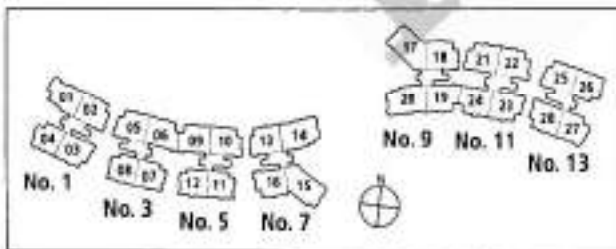


The above plans are subject to change as maybe approved by the relevant authorities. Areas are approximate measurements and subject to final survey.

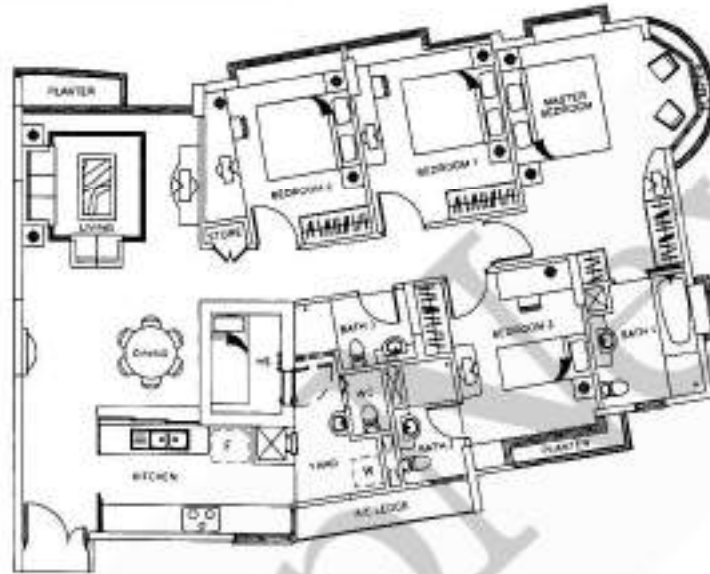


**Type B2-2** (109 sq m/1174 sq ft)  
(incl. of a/c ledge)

#17-01



The above plans are subject to change as maybe approved by the relevant authorities. Areas are approximate measurements and subject to final survey.

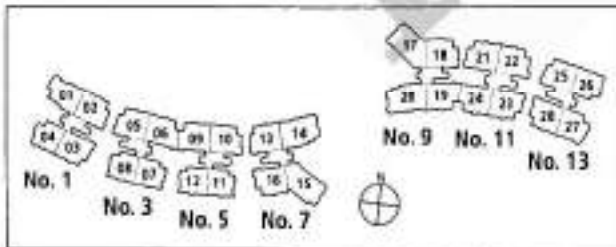


**Type C1** (137 sq m/1475 sq ft)

(incl. of alc ledge & planter)

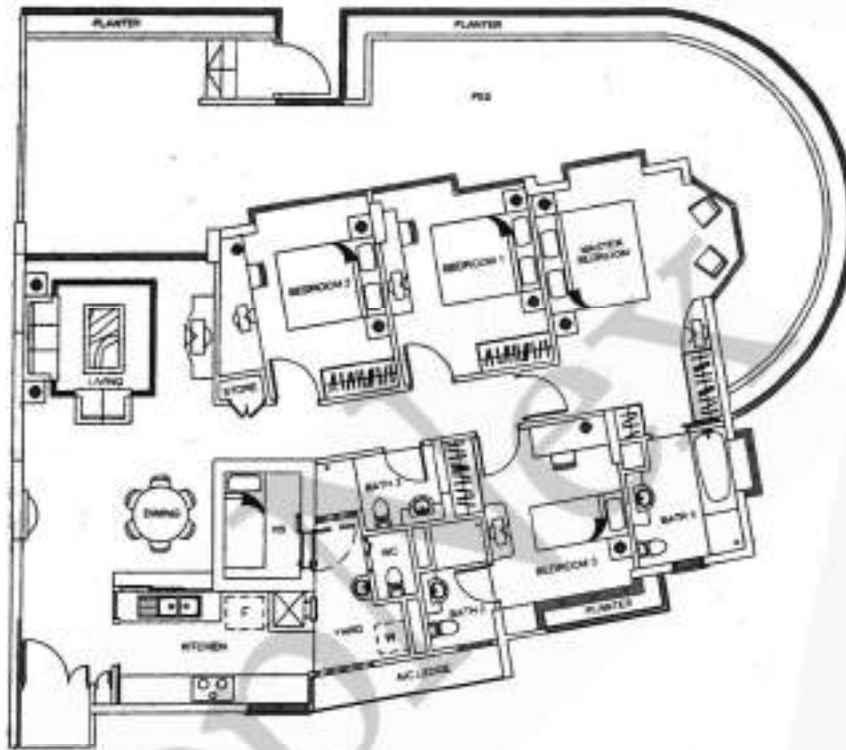
#02-14 – #11-14

#03-20 – #14-20

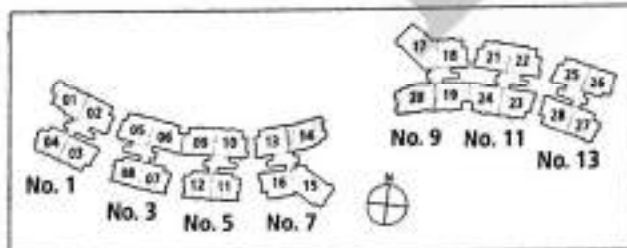


The above plans are subject to change as maybe approved by the relevant authorities. Areas are approximate measurements and subject to final survey.

4-bedroom Apartment

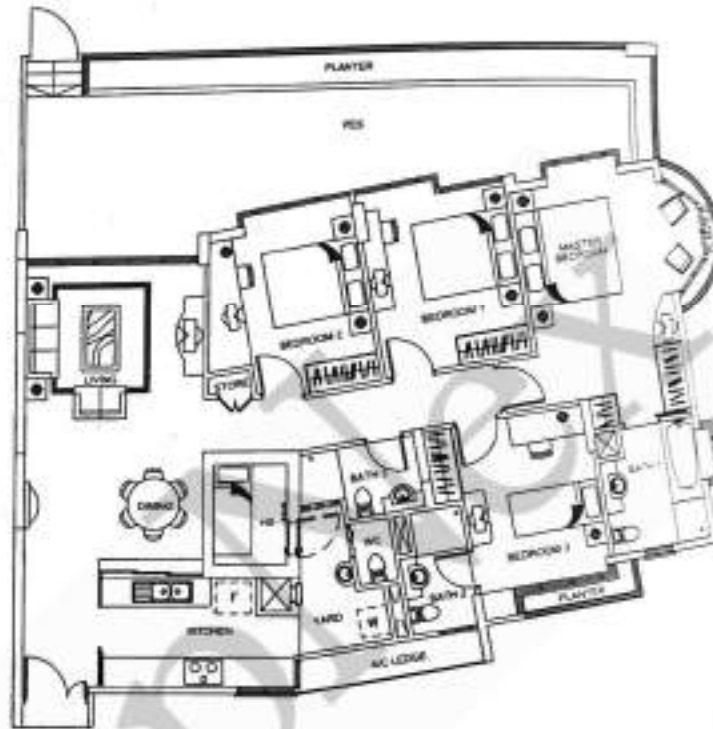


**Type C1(p)** (200 sq m/2153 sq ft)  
 (incl. of PES, air ledge & planter)  
 #01-14



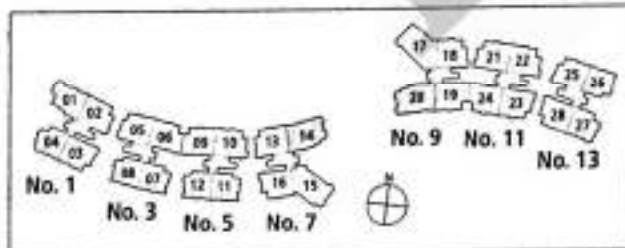
The above plans are subject to change as maybe approved by the relevant authorities. Areas are approximate measurements and subject to final survey

4-bedroom Apartment



**Type C1(p1)** (178 sq m/1916 sq ft)  
(incl. of PES, a/c ledge & planter)

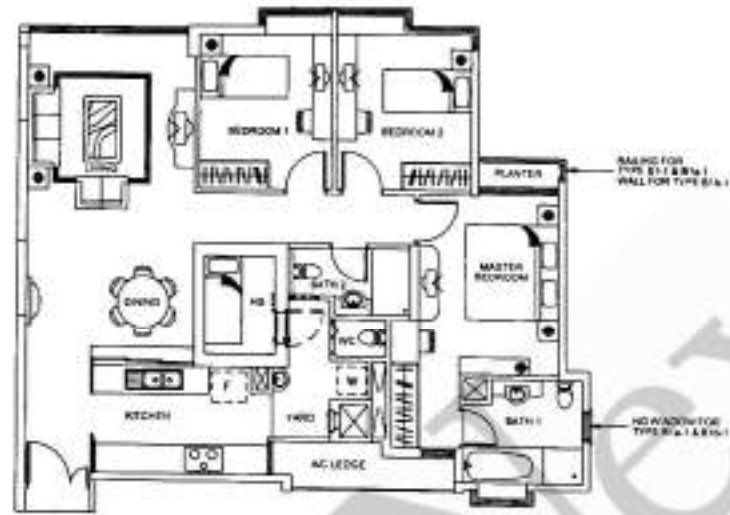
#02-20



The above plans are subject to change as maybe approved by the relevant authorities. Areas are approximate measurements and subject to final survey

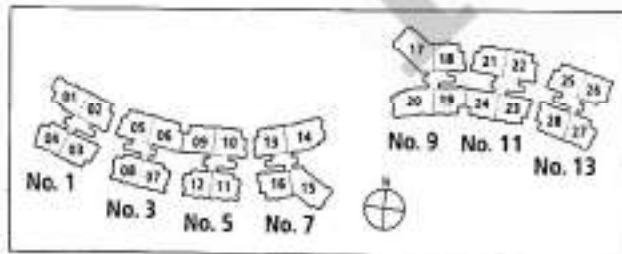


3-bedroom Apartment



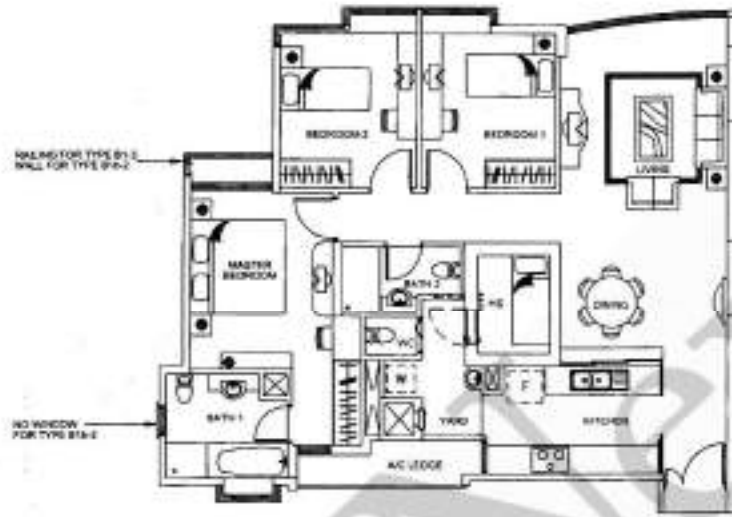
**Type B1b- 1** (109 sq m/1174 sq ft)  
 (incl. of air ledge & planter)

#15-19 – #16-19  
 #13-24 – #16-24



The above plans are subject to change as maybe approved by the relevant authorities. Areas are approximate measurements and subject to final survey.

3-bedroom Apartment

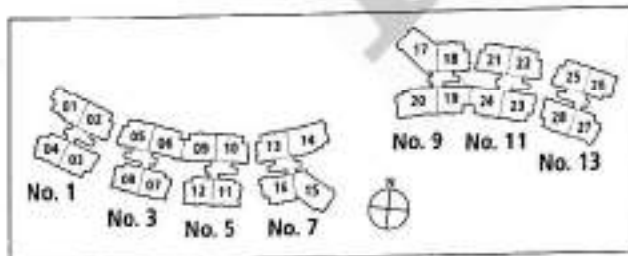


**Type B1b-2** (110 sq m/1185 sq ft)

(incl. of air ledge & planter)

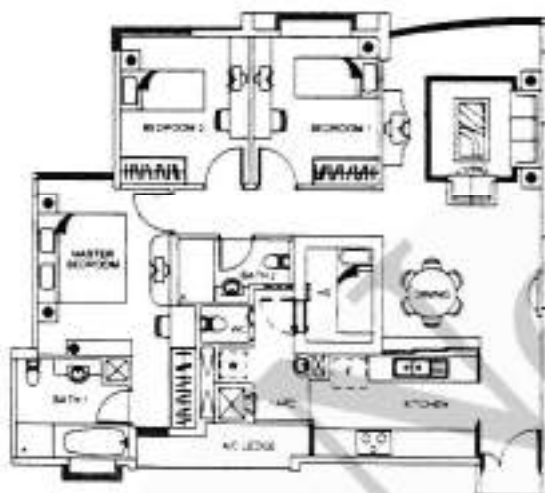
#15-06

#13-09 – #15-09



The above plans are subject to change as maybe approved by the relevant authorities. Areas are approximate measurements and subject to final survey.

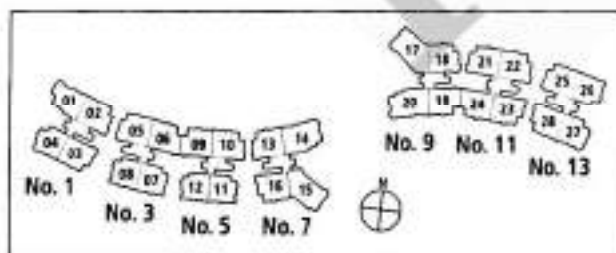
### 3-bedroom Apartment



**Type B1b-3** (109 sq m/1174 sq ft)

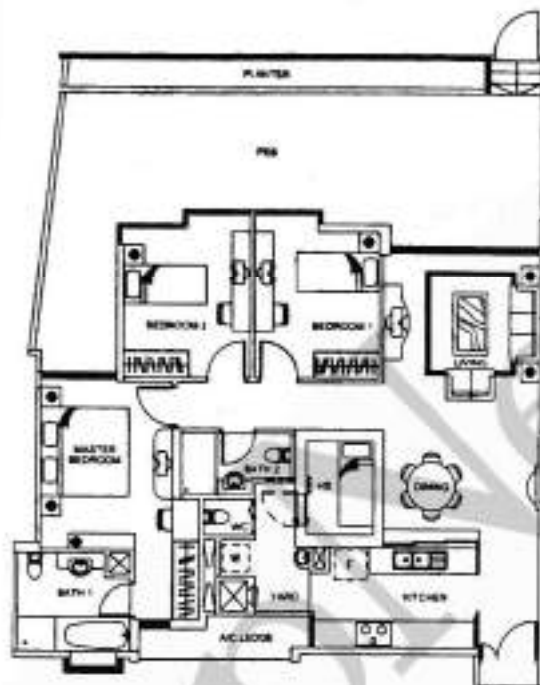
(incl. of air ledge)

#16-06, #16-09



The above plans are subject to change as maybe approved by the relevant authorities. Areas are approximate measurements and subject to final survey.

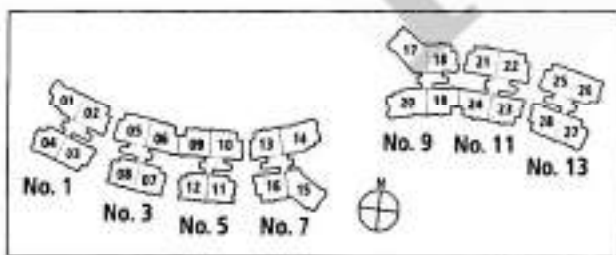
3-bedroom Apartment



**Type B1b(p1)** (156 sq m/1680 sq ft)

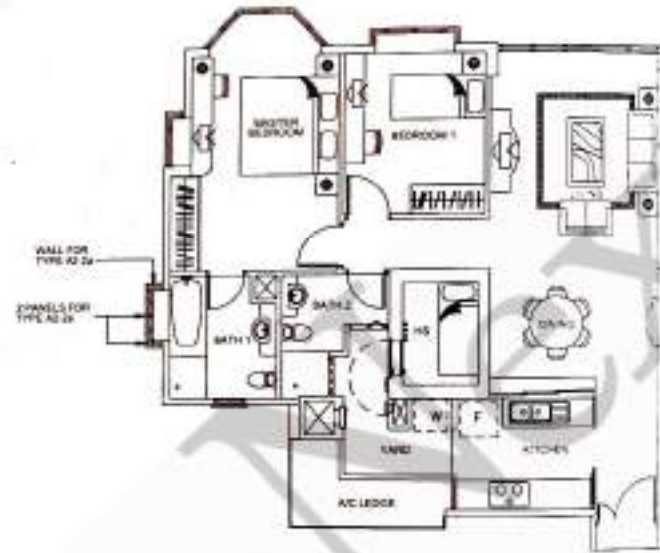
(incl. of PES, a/c ledge & planter)

#02-19, #02-24



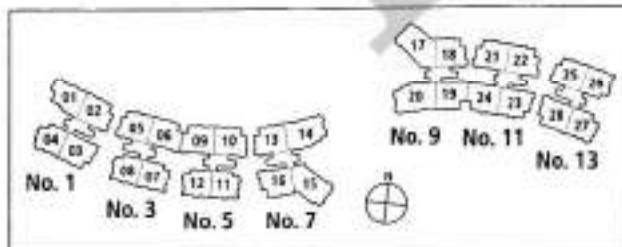
The above plans are subject to change as maybe approved by the relevant authorities. Areas are approximate measurements and subject to final survey.

2-bedroom Apartment

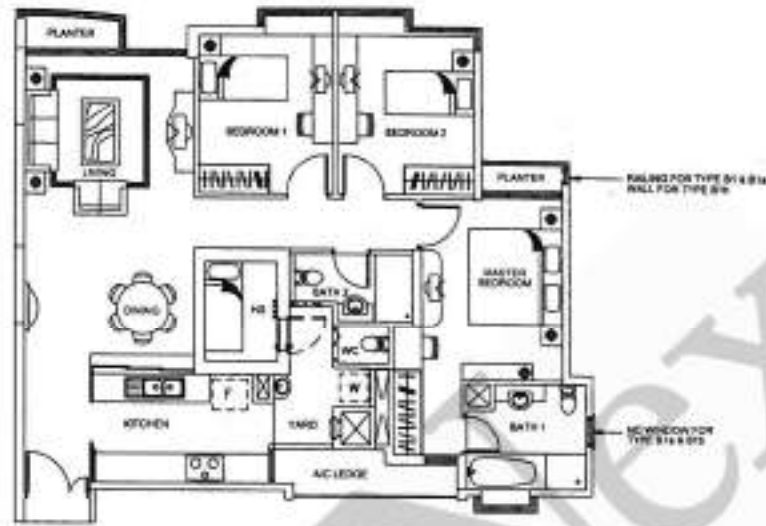


**Type A2-2a** (95 sq m/1023 sq ft)  
(incl. of a/c ledge)

#17-04,  
#12-27



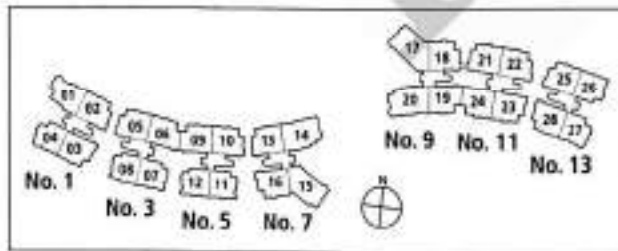
The above plans are subject to change as maybe approved by the relevant authorities. Areas are approximate measurements and subject to final survey.



**Type B1** (109 sq m/1174 sq ft)

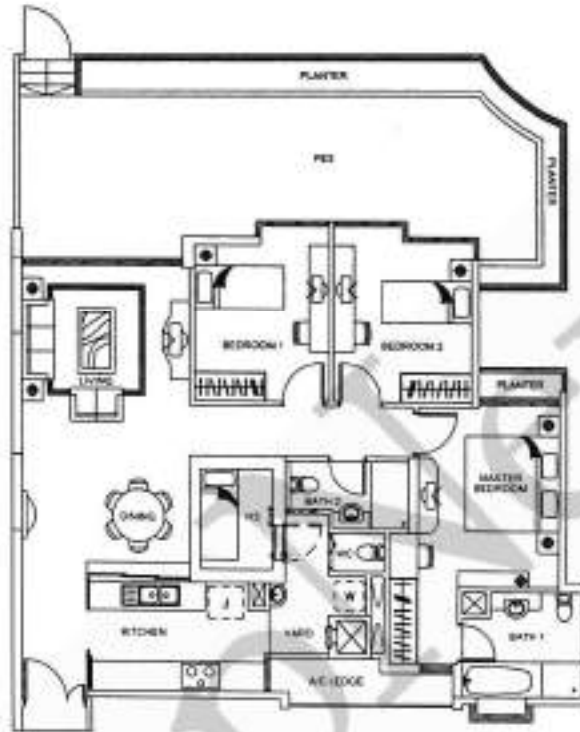
(incl. of a/c ledge & planter)

- #02-02 – #16-02
- #04-03 – #16-03
- #02-05 – #14-05
- #02-10 – #12-10
- #02-13 – #11-13
- #02-22 – #12-22
- #03-23 – #12-23
- #02-25 – #10-25
- #03-28 – #10-28

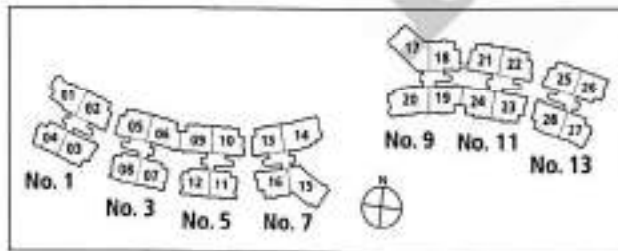


The above plans are subject to change as maybe approved by the relevant authorities. Areas are approximate measurements and subject to final survey

3-bedroom Apartment

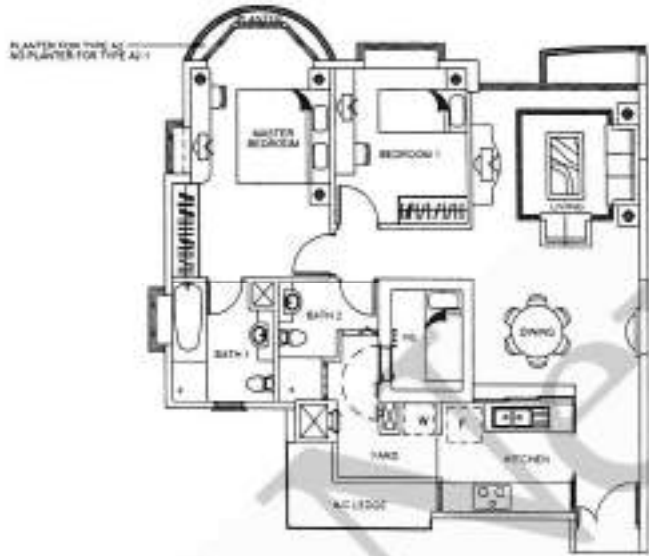


**Type B1(p)** (153 sq m/1647 sq ft)  
(incl. of PES, a/c ledge & planter)  
#02-23, #02-28



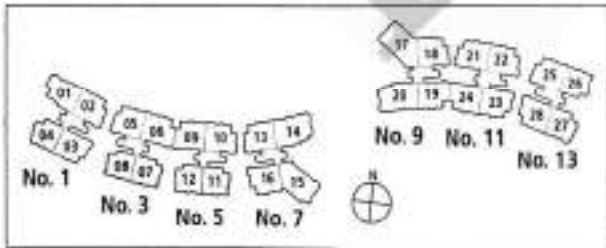
The above plans are subject to change as maybe approved by the relevant authorities. Areas are approximate measurements and subject to final survey

**2-bedroom Apartment**



**Type A2-1** (95 sq m/1023 sq ft)  
(incl. of a/c ledge & planter)

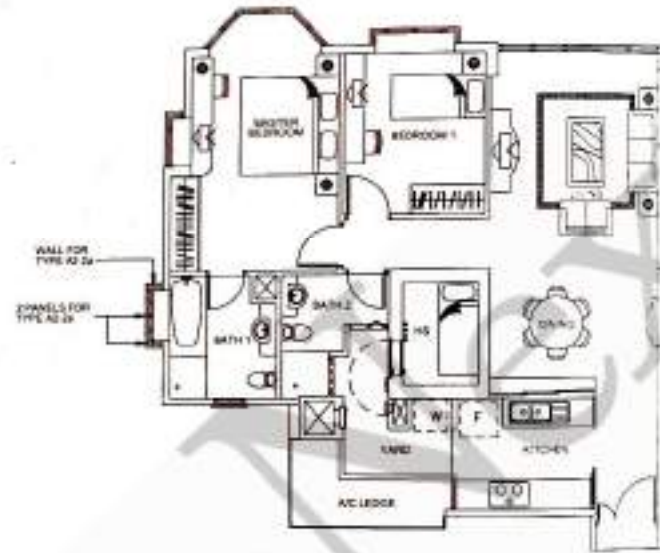
#15-04 – #16-04  
#10-27



The above plans are subject to change as maybe approved by the relevant authorities. Areas are approximate measurements and subject to final survey.

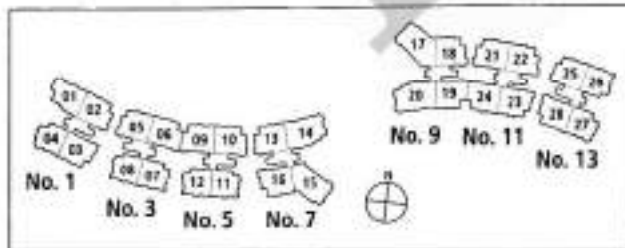


2-bedroom Apartment



**Type A2-2** (95 sq m/1023 sq ft)  
(incl. of a/c ledge)

#11-27



The above plans are subject to change as maybe approved by the relevant authorities. Areas are approximate measurements and subject to final survey.

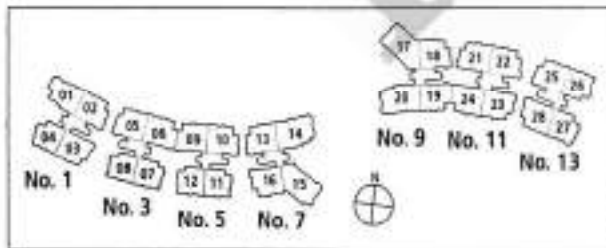
**2-bedroom Apartment**



**Type A1-5** (94 sq m/1012 sq ft)

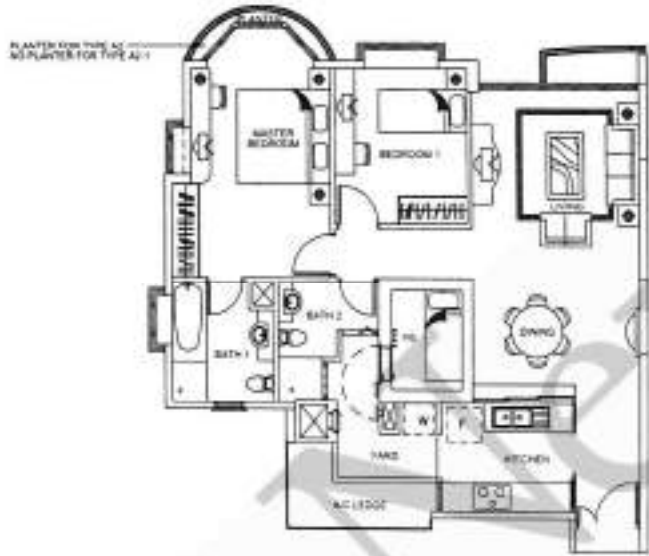
(incl. of alc ledge)

#16-07, #16-12



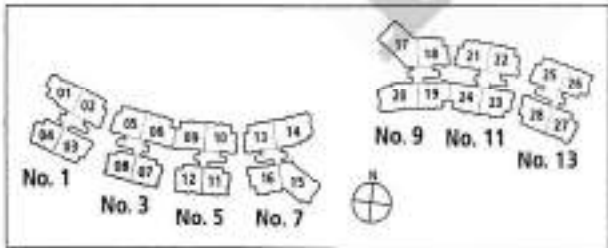
The above plans are subject to change as maybe approved by the relevant authorities. Areas are approximate measurements and subject to final survey.

**2-bedroom Apartment**



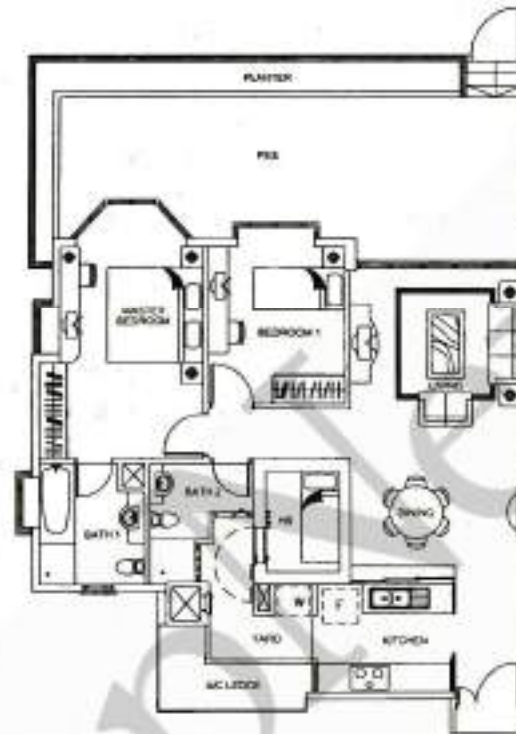
**Type A2** (96 sq m/1034 sq ft)  
(incl. of a/c ledge & plaster)

#04-04 – #14-04  
#03-27 – #09-27

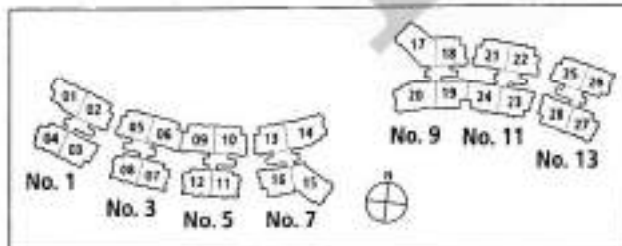


The above plans are subject to change as maybe approved by the relevant authorities. Areas are approximate measurements and subject to final survey.

2-bedroom Apartment

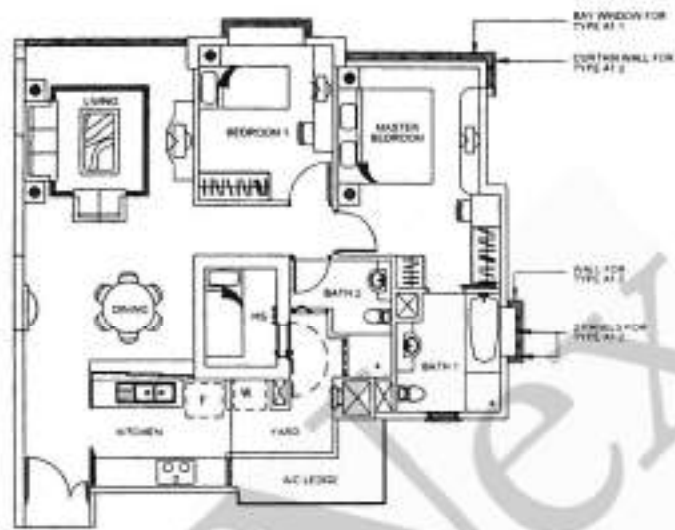


**Type A2(p)** (135 sq m/1454 sq ft)  
(incl. of PES, a/c ledge & planter)  
#02 27



The above plans are subject to change as maybe approved by the relevant authorities. Areas are approximate measurements and subject to final survey.

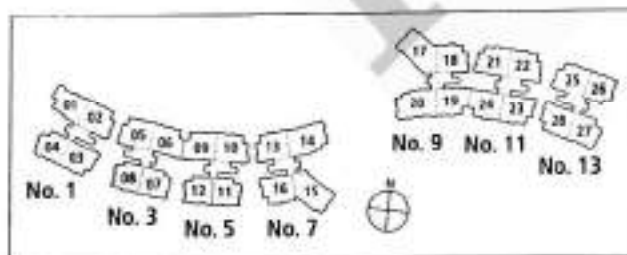
**2-bedroom Apartment**



**Type A1-2** (93 sq m/1002 sq ft)

(incl. of a/c ledge)

#12-26



The above plans are subject to change as may be approved by the relevant authorities. Areas are approximate measurements and subject to final survey.

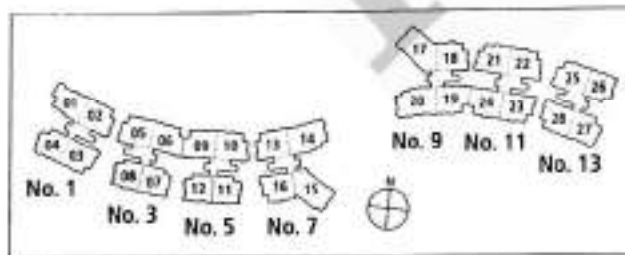
2-bedroom Apartment



**Type A1-3** (95 sq m/1,023 sq ft)

(incl. of ac ledge)

- #15-08
- #13-11 – #15-11
- #13-12 – #14-12



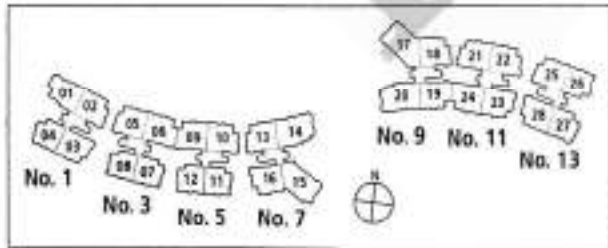
The above plans are subject to change as may be approved by the relevant authorities. Areas are approximate measurements and subject to final survey.

2-bedroom Apartment



**Type A1-4** (94 sq m/1012 sq ft)  
(incl. of air ledge)

#15-07, #15-12  
#16-08, #16-11



The above plans are subject to change as maybe approved by the relevant authorities. Areas are approximate measurements and subject to final survey.