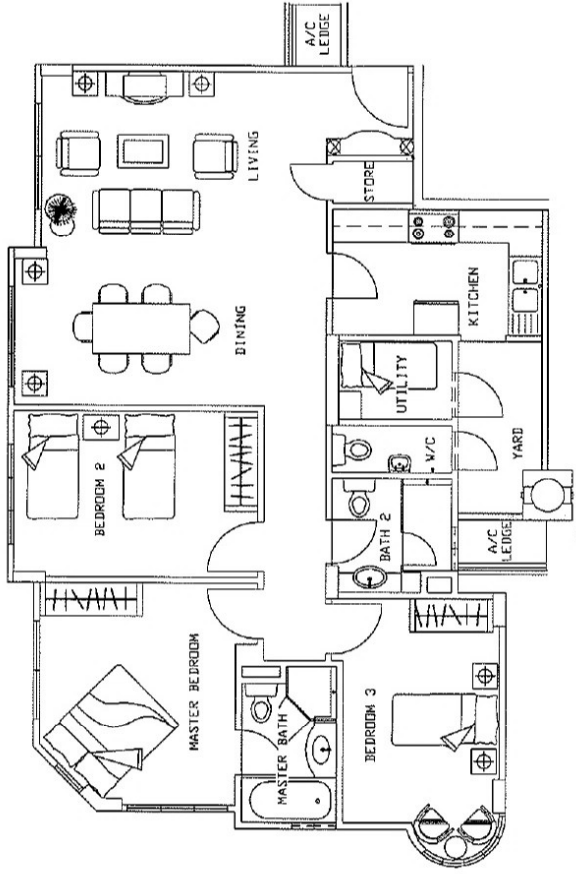
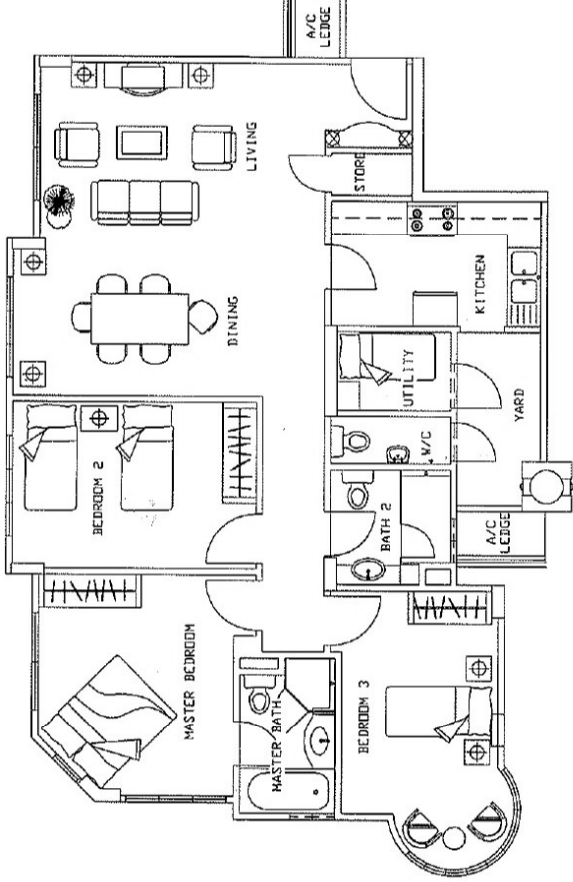


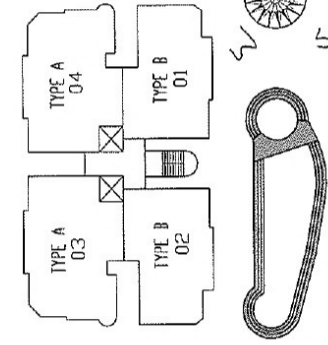
# APARTMENT PLANS



**TYPE A** 1270 SQ FT (118 SQ.M)

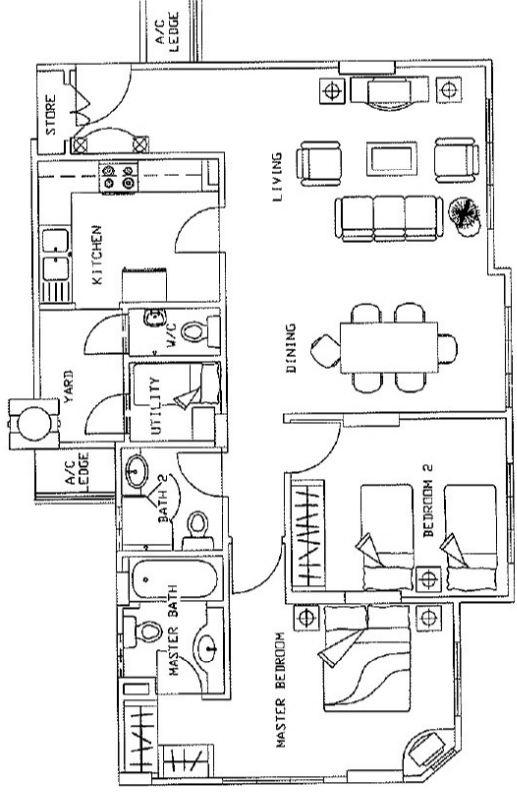


**TYPE A1** 1281 SQ FT (119 SQ.M)

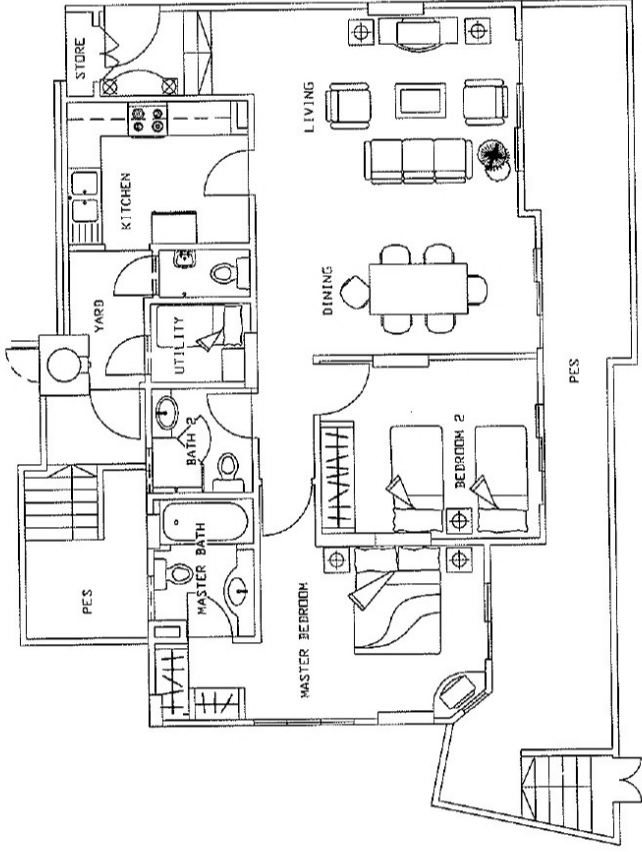


C		B		A		A1	
09-02	09-01	08-02	08-01	07-02	07-01	06-02	06-01
05-02	05-01	04-02	04-01	03-02	03-01	02-02	02-01
01-02	01-01	00-02	00-01	00-02	00-01	00-02	00-01
LFR - 10							
Basement Carpark							

The above plans are not to scale and subject to any amendments as may be approved by the relevant authorities. All floor areas are approximate and subject to final survey.

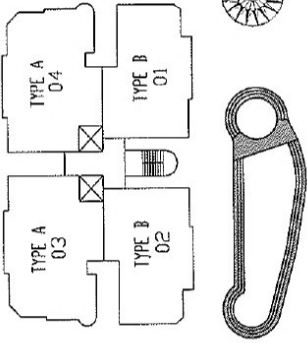


**TYPE B** 1055 SQ. FT. (98 SQ. M)



**TYPE B1** 1055 SQ. FT. (98 SQ. M)

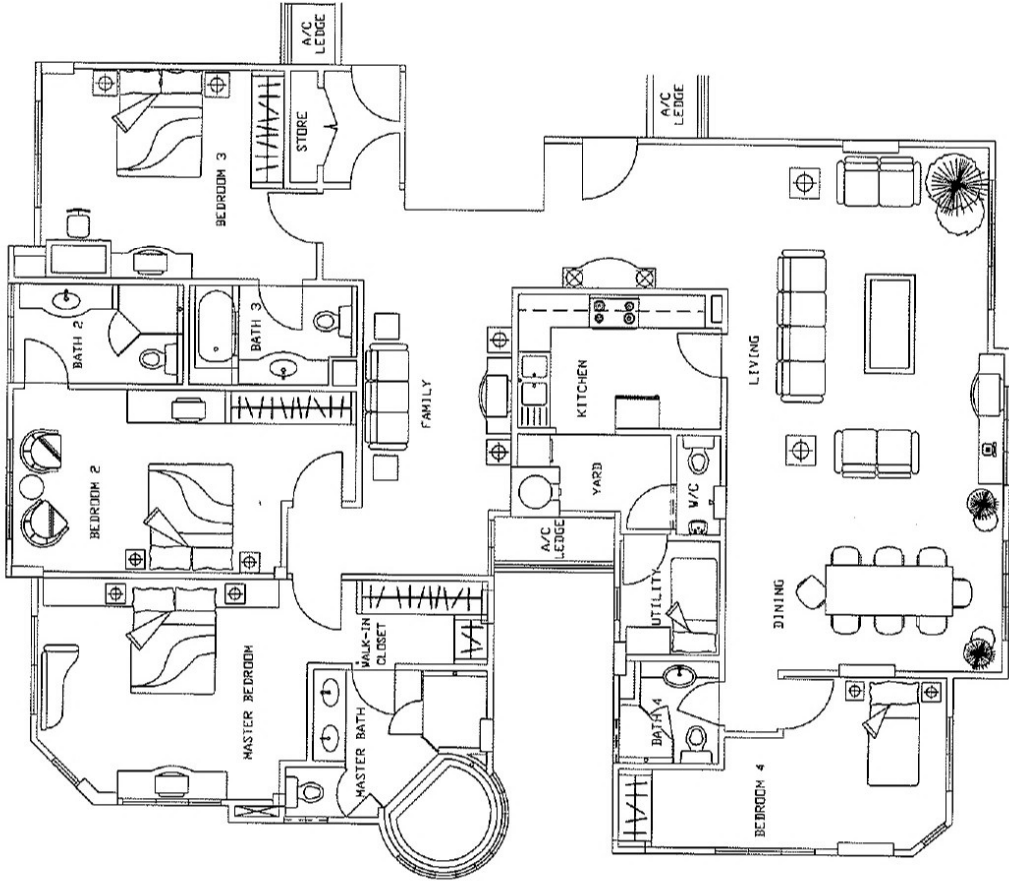
**PES** 431 SQ. FT. (40 SQ. M)



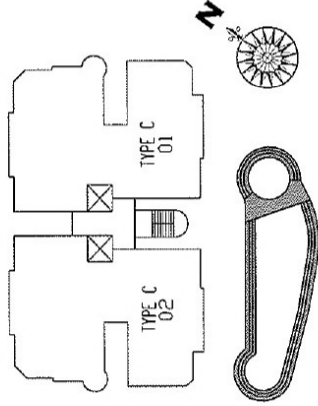
C		C	
A1	B	A1	B
08-01	08-01	08-01	08-01
07-01	07-01	07-01	07-01
06-01	06-01	06-01	06-01
05-01	05-01	05-01	05-01
04-01	04-01	04-01	04-01
03-01	03-01	03-01	03-01
02-01	02-01	02-01	02-01
01-01	01-01	01-01	01-01
Lift Lobby		Lift Lobby	
Basement Carpark		Basement Carpark	

The above plans are not to scale and subject to any amendments as may be approved by the relevant authorities. All floor areas are approximate and subject to final survey.

# PENTHOUSE PLAN



**TYPE C 2336 SQ. FT (217 SQ. M)**



C		C	
07-02	08-01	B	B
A1	A1	08-01	08-04
08-03	08-02	B	A
07-03	07-02	07-01	07-04
A	A	B	A
06-01	04-02	06-01	06-04
A	B	B	A
05-03	05-02	05-01	05-04
A	B	B	A
04-03	04-02	04-01	04-04
A	B	B	A
03-03	03-02	03-01	03-04
A	B	B	A
02-03	02-02	02-01	02-04
B1	B1	Lobby	
01-02		Basement Carpark	

*The above plans are not to scale and subject to any amendments as may be approved by the relevant authorities. All floor areas are approximate and subject to final survey.*