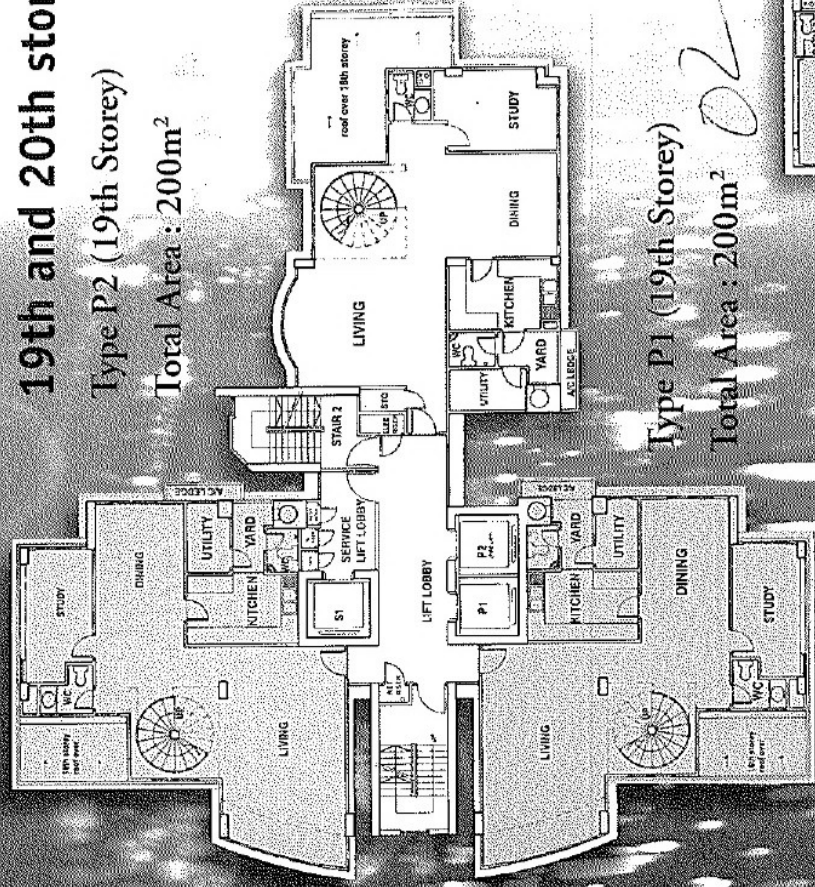


FLOOR PLANS

19th and 20th storey plan



Type P2 (19th Storey)

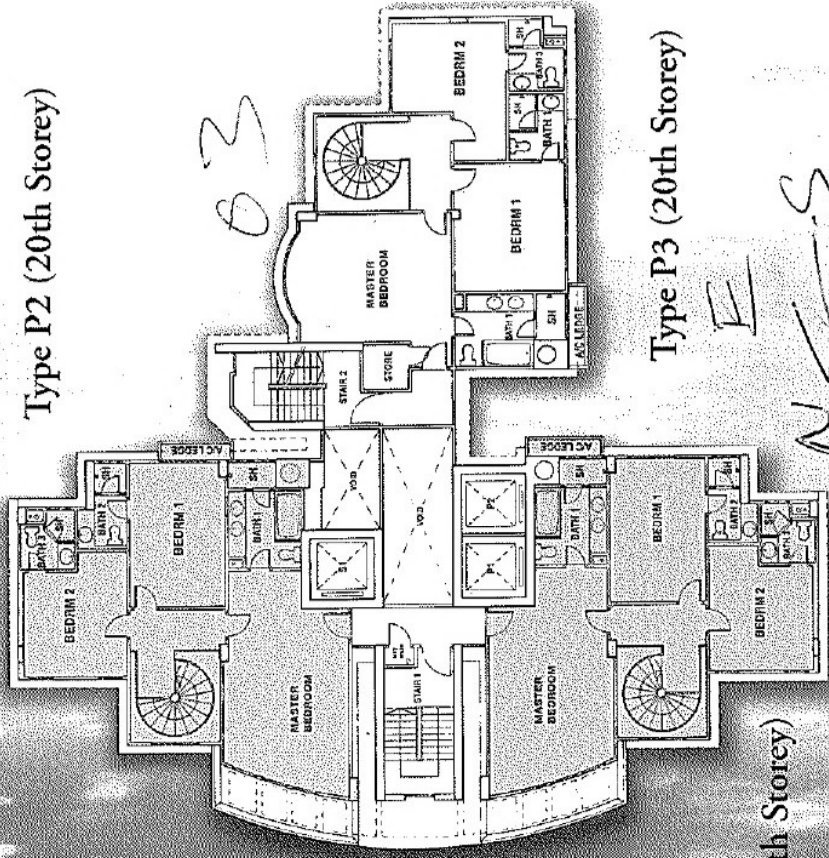
Total Area : 200m²

Type P3 (19th Storey)

Total Area : 198m²

Type P1 (19th Storey)

Total Area : 200m²



Type P2 (20th Storey)

Type P1 (20th Storey)

Type P3 (20th Storey)

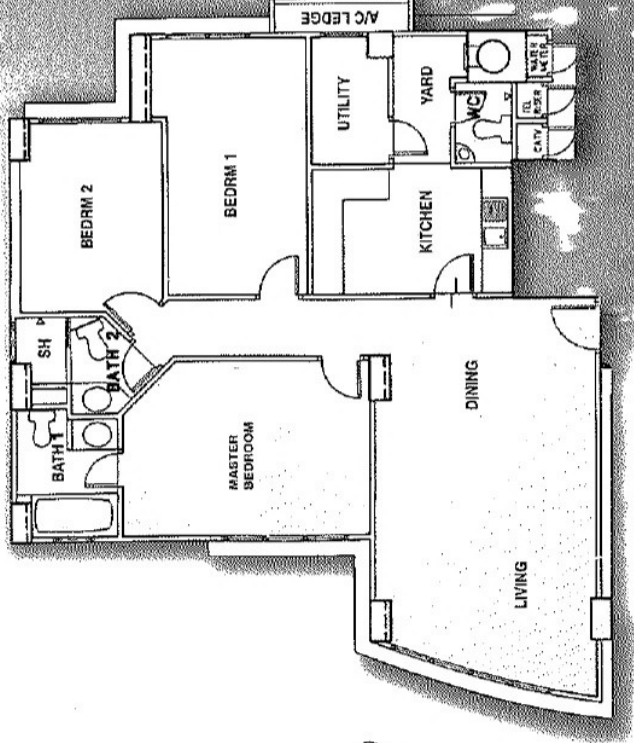
Handwritten orientation: N ← S, E

3rd and 18th storey plan

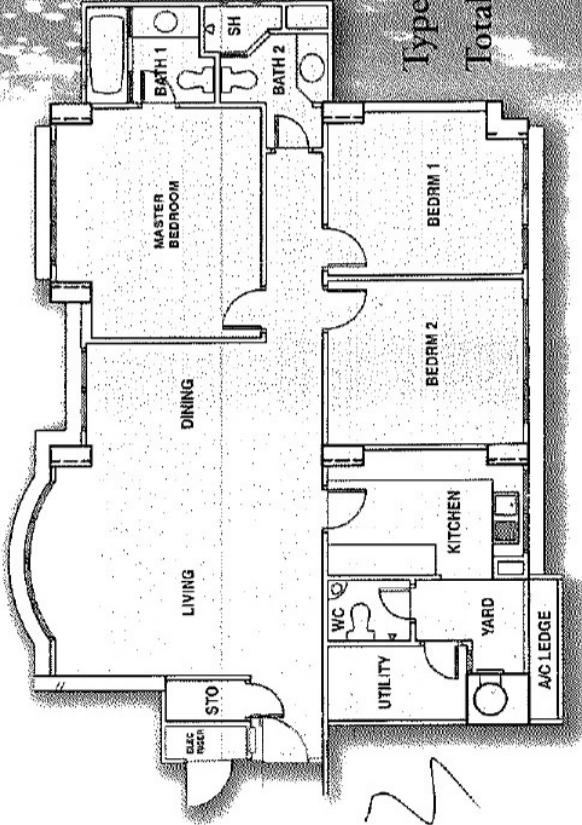
Type A2

Total Area : 112m²

02

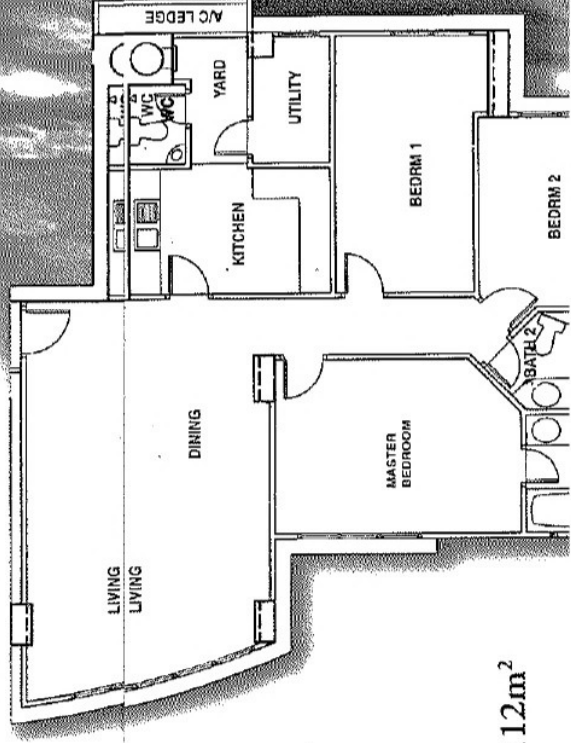


03



Type B3

Total Area: 119m²



Type A1

Total Area : 112m²