

# Sarkies

MANSSION

4TH to 8TH STOREY



TYPE B

2 Bedroom + Study: 148.80 sq metre

# Sarkies

MANSION

10TH STOREY



TYPE P 1

# Sarkies

MANSION

9TH STOREY



TYPE P 2

3 Bedroom + Study: 253.70 sq metre

# Sarkies

MANSION

3RD STOREY

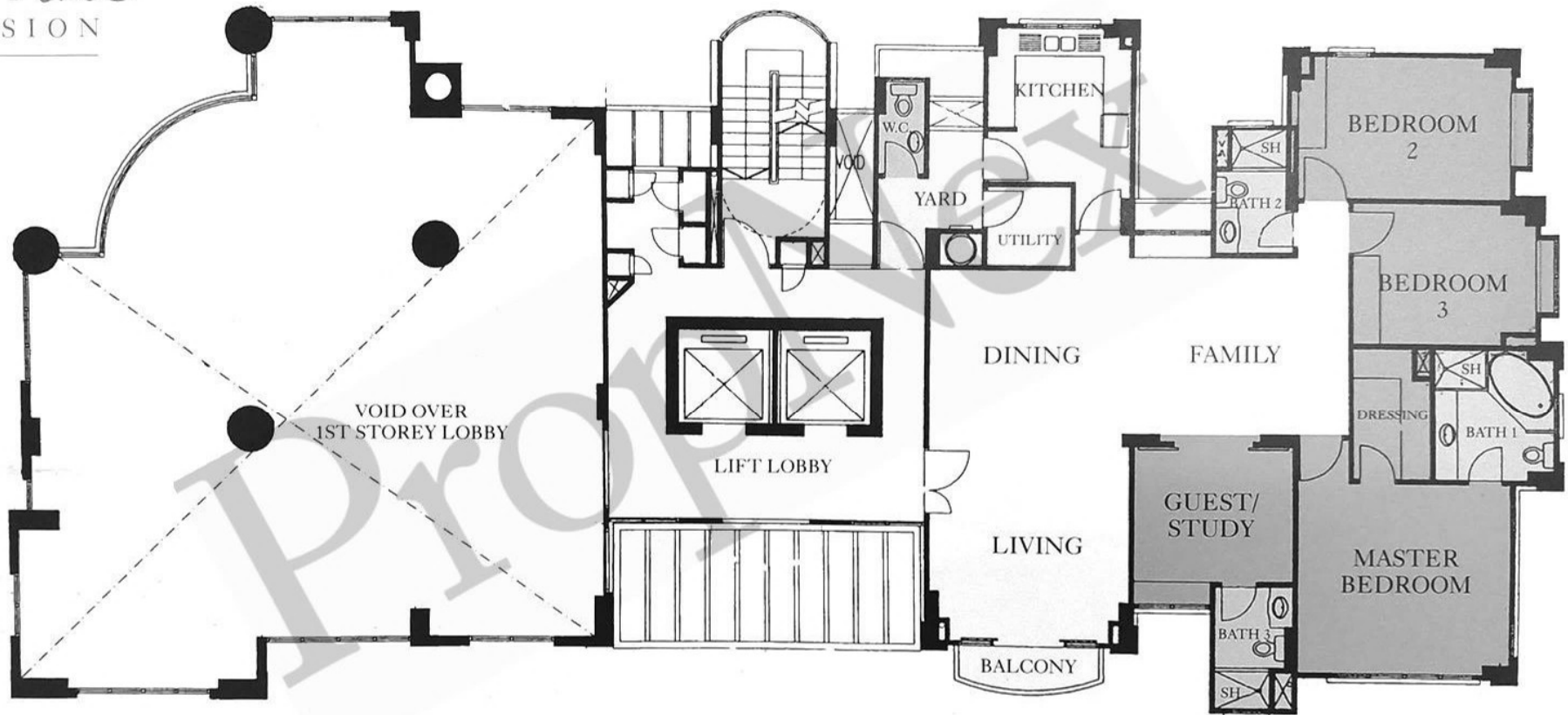


TYPE B

2 Bedroom + Study: 152.30 sq metre

*Sarkies*  
MANSION

2ND STOREY



TYPE A

3 Bedroom + Study: 177.50 sq metre

# Sarkies

MANSION

3RD STOREY



TYPE A

3 Bedroom + Study: 177.50 sq metre

# Sarkies

MANSTON

4TH to 8TH STOREY



TYPE A

3 Bedroom + Study: 177.50 sq metre