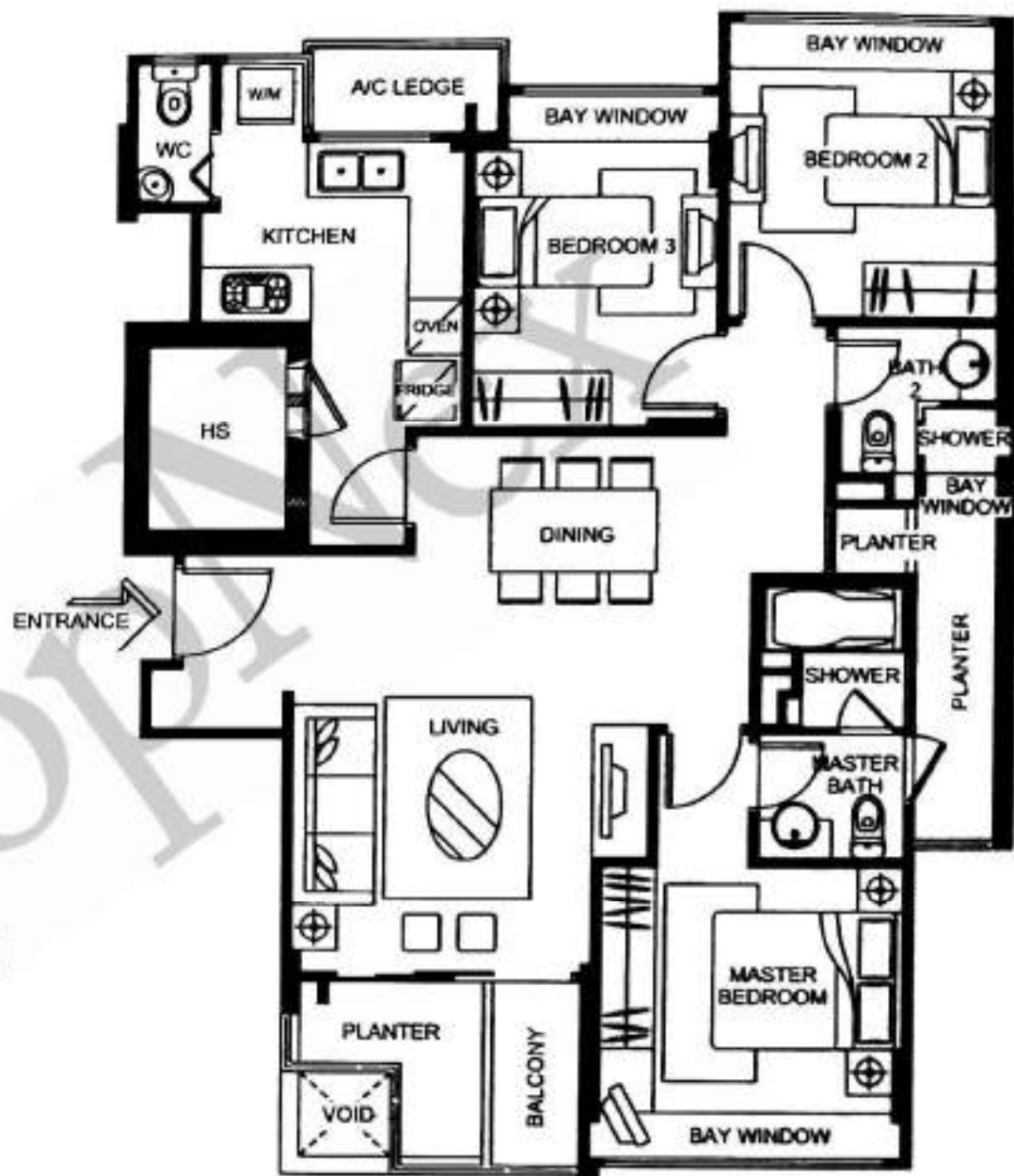
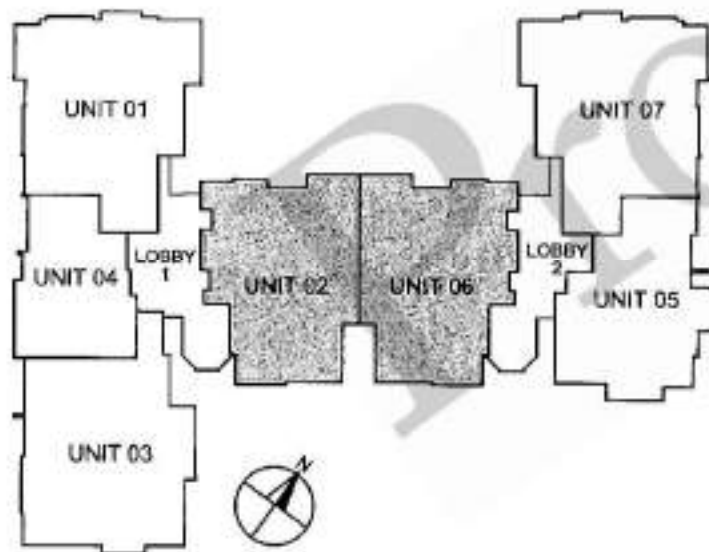


Type D2

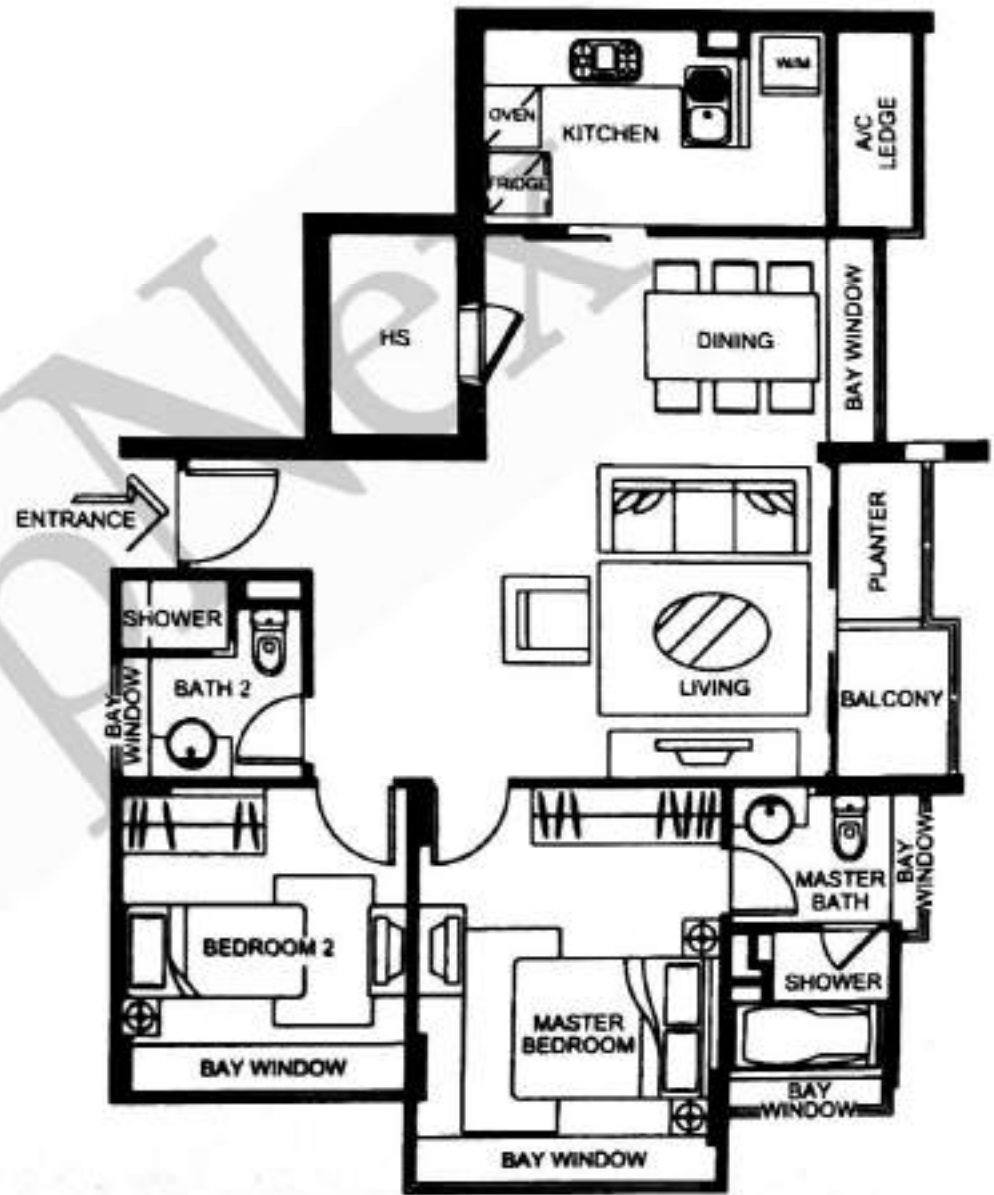
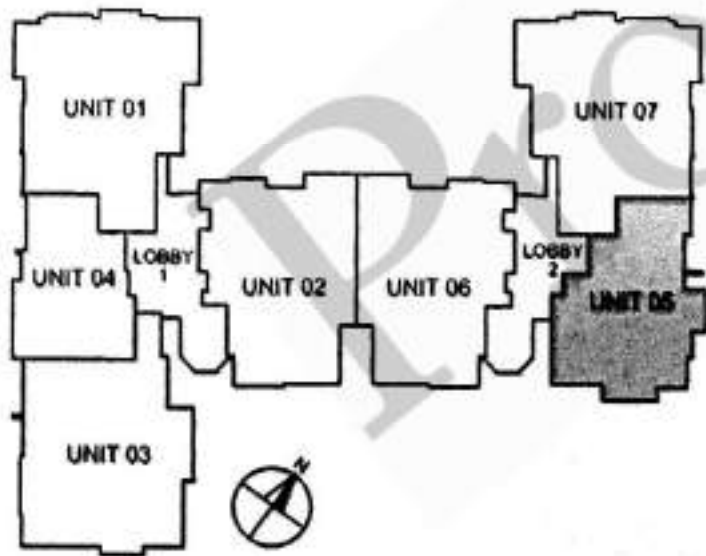
Area 1087sqft/101sqm
Unit #02-02, #02-06



Type E

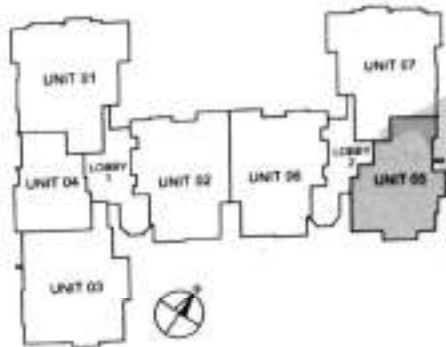
Area 904sqft/84sqm

Unit #02-05, #03-05, #04-05



Type E1

Area 1615sqft/150sqm
Unit #05-05



LOWER STOREY

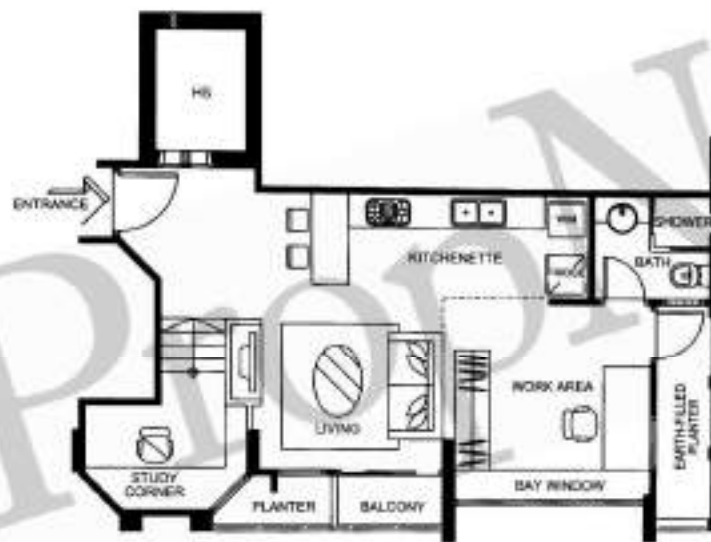
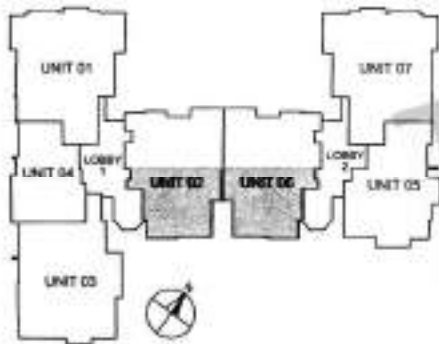


UPPER STOREY

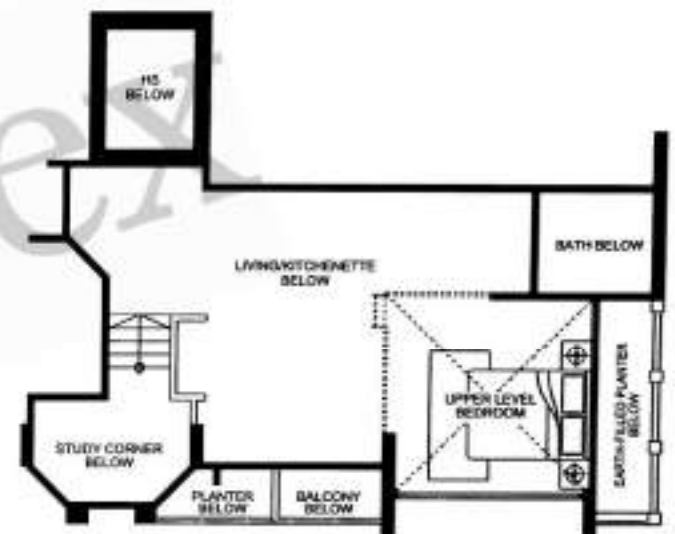
The above plans are subject to change as may be approved by the relevant authorities. Areas are approximate measurements and subject to final survey.

Type F

Area 635sqft/59sqm
Unit #01-02, #01-06



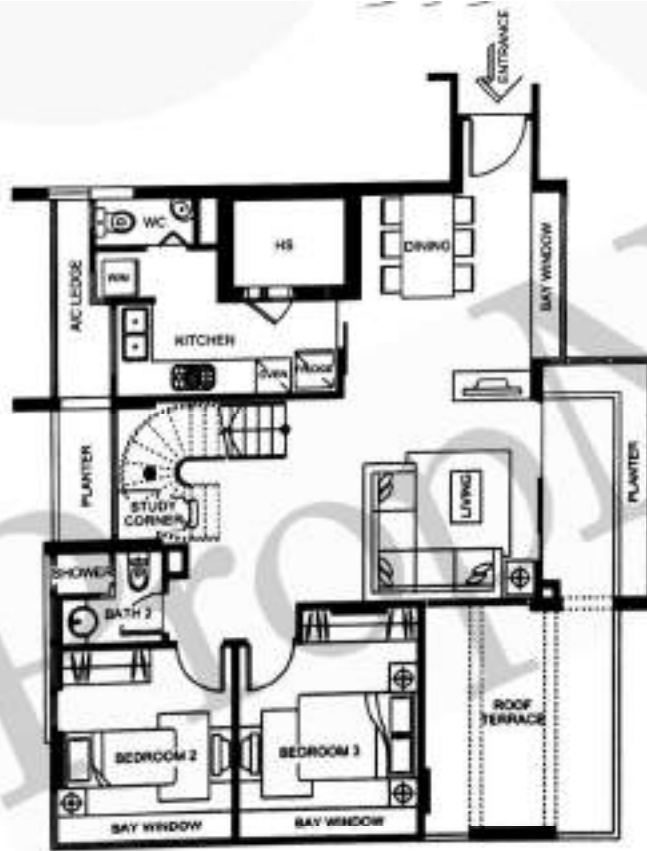
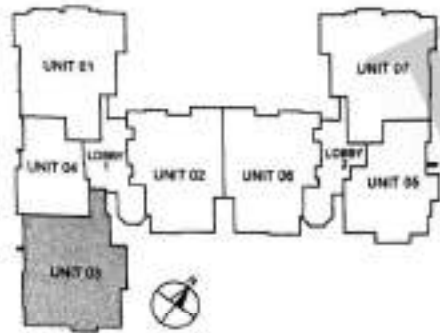
LOWER LEVEL



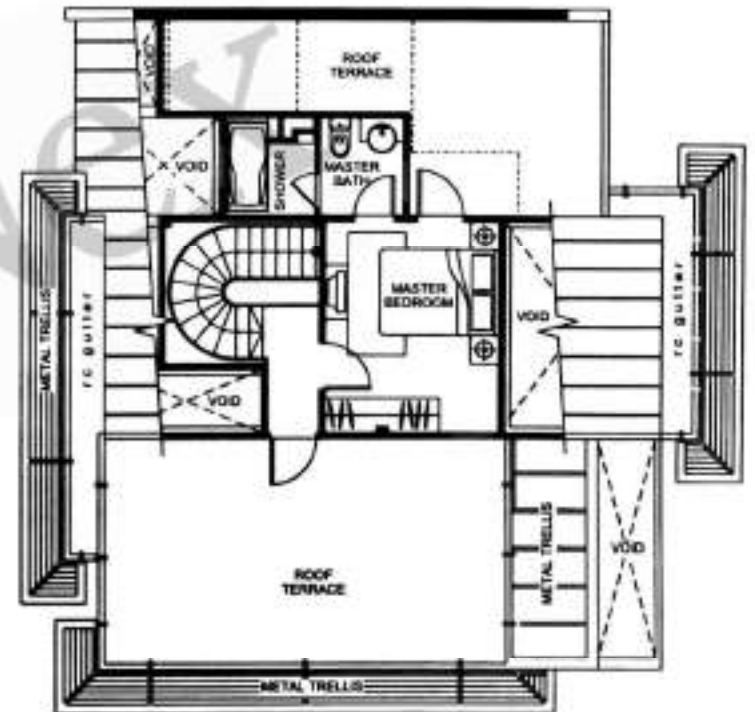
UPPER LEVEL

Type A1

Area 1927sqft/179sqm
Unit #05-03



LOWER STOREY

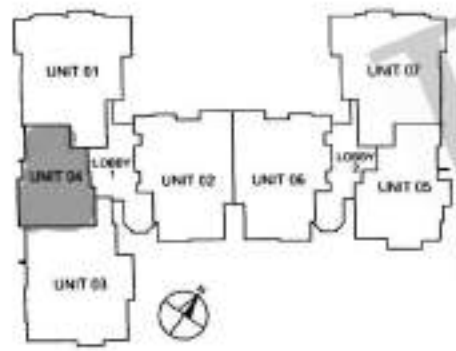


UPPER STOREY

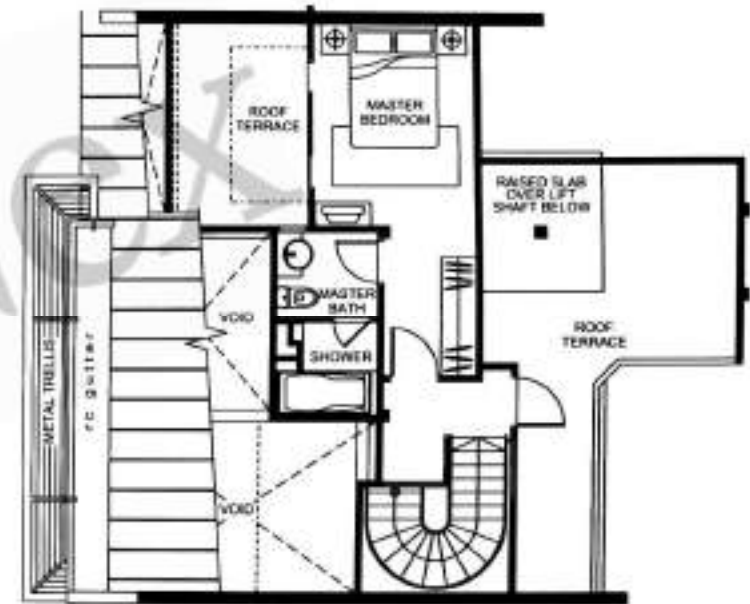
Type B1

Area 1238sqft/115sqm

Unit #05-04



LOWER STOREY

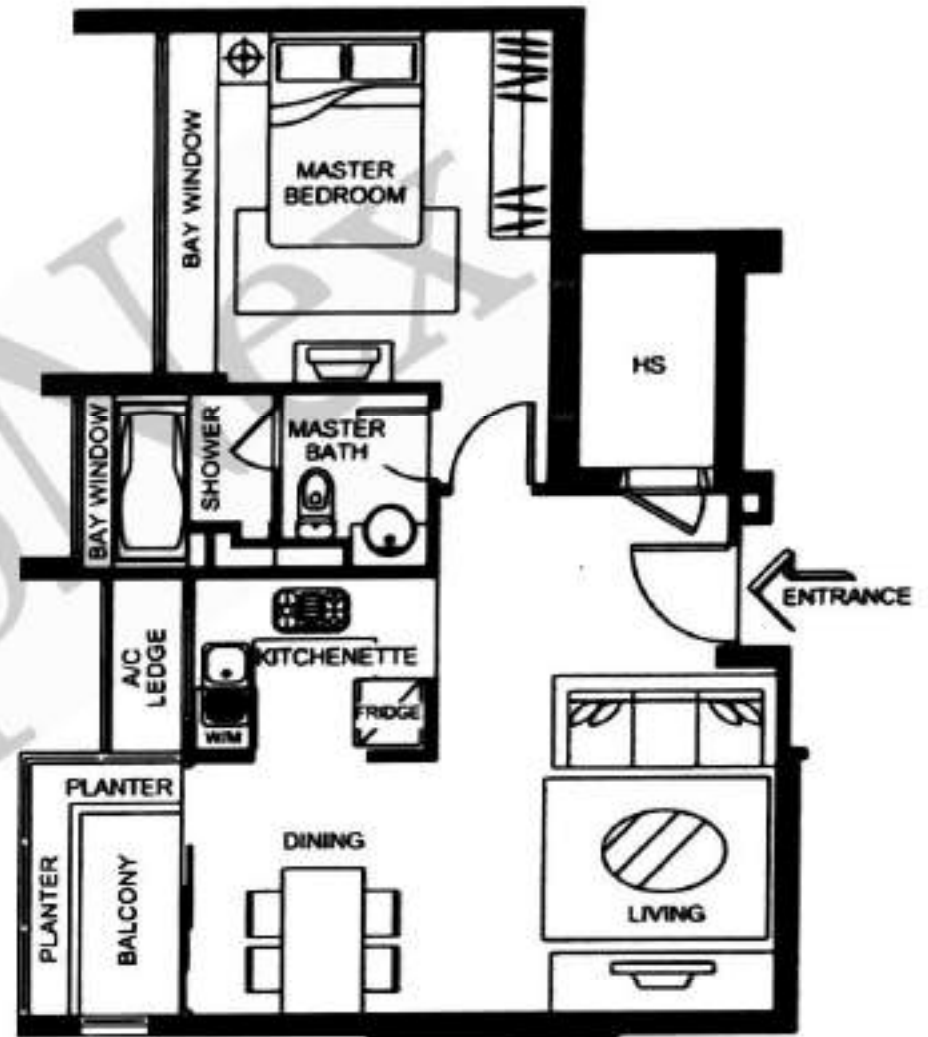
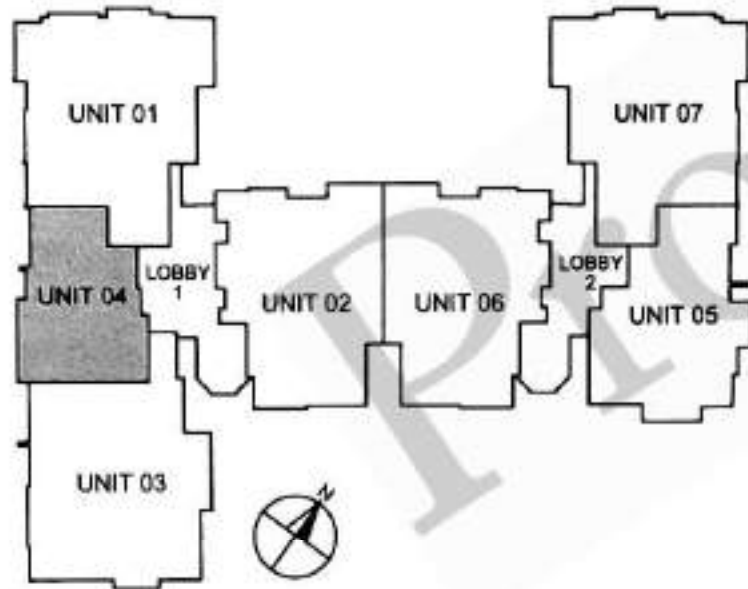


UPPER STOREY

Type B

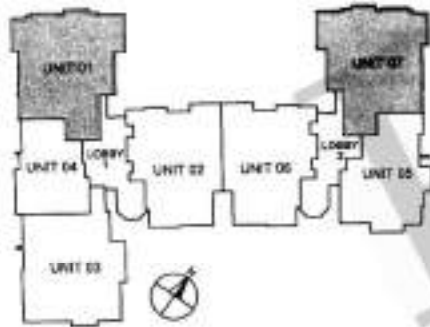
Area 635sqft/59sqm

Unit #02-04, #03-04, #04-04

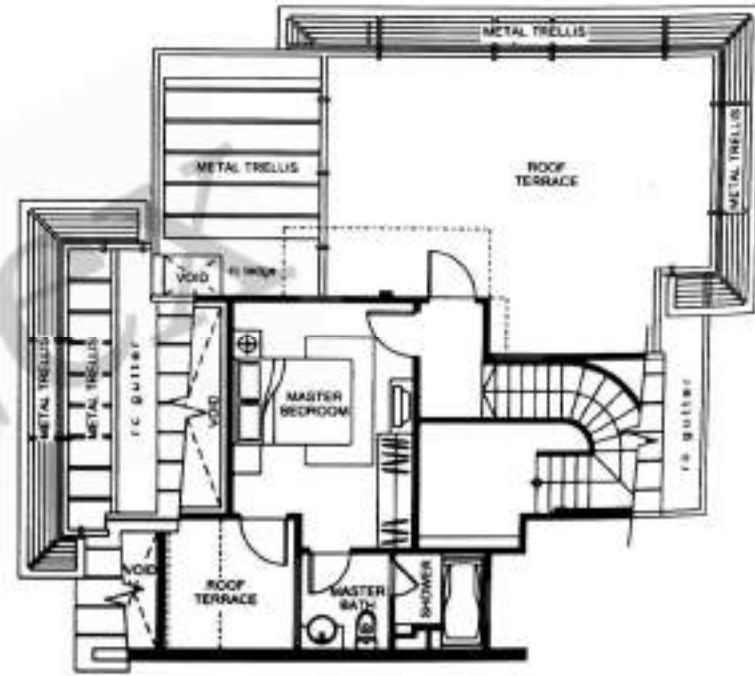


Type C1

Area 1819sqft/169sqm
Unit #05-01, #05-07



LOWER STOREY

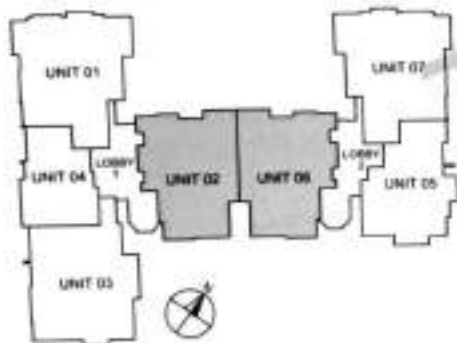


UPPER STOREY

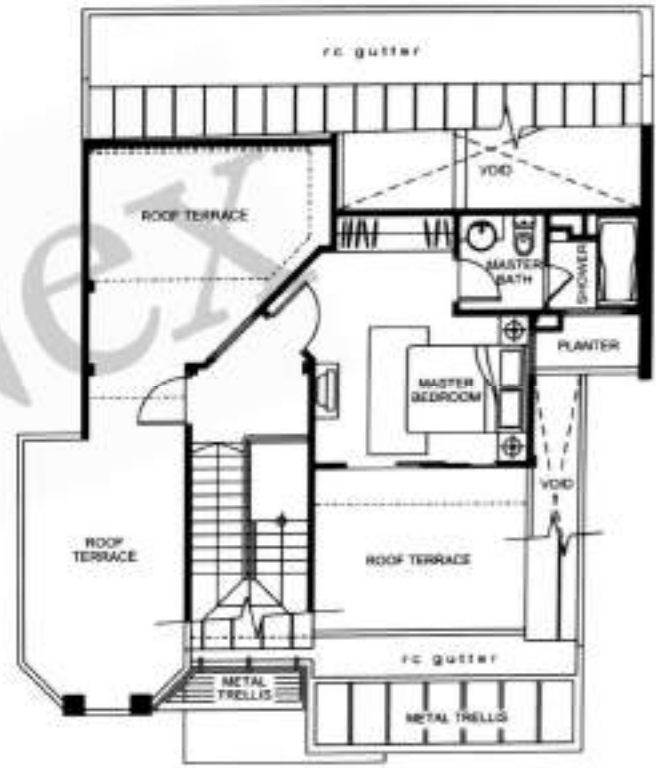
The above plans are subject to change as may be approved by the relevant authorities. Areas are approximate measurements and subject to final survey.

Type D1

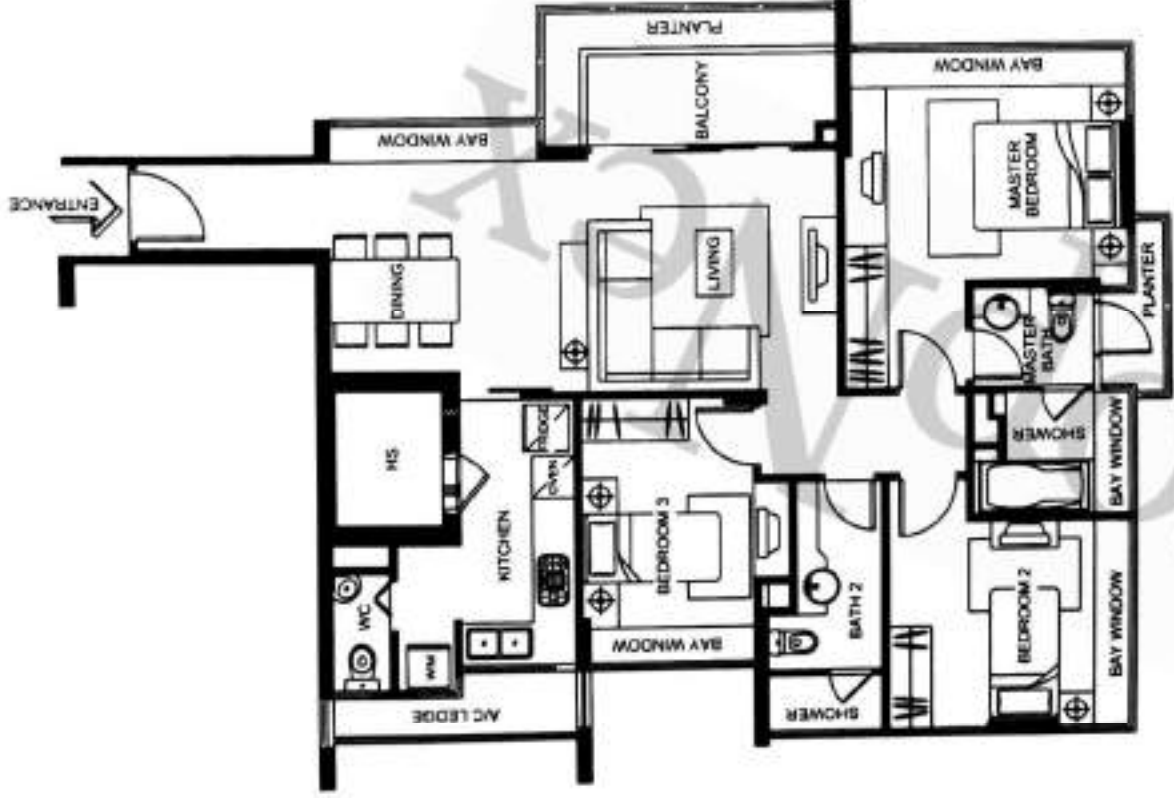
Area 1755sqft/163sqm
Unit #05-02, #05-06



LOWER STOREY



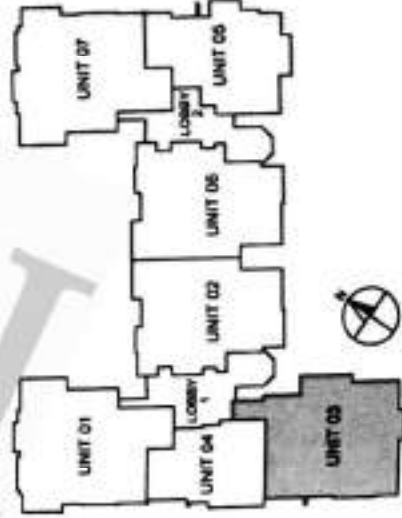
UPPER STOREY



Type A

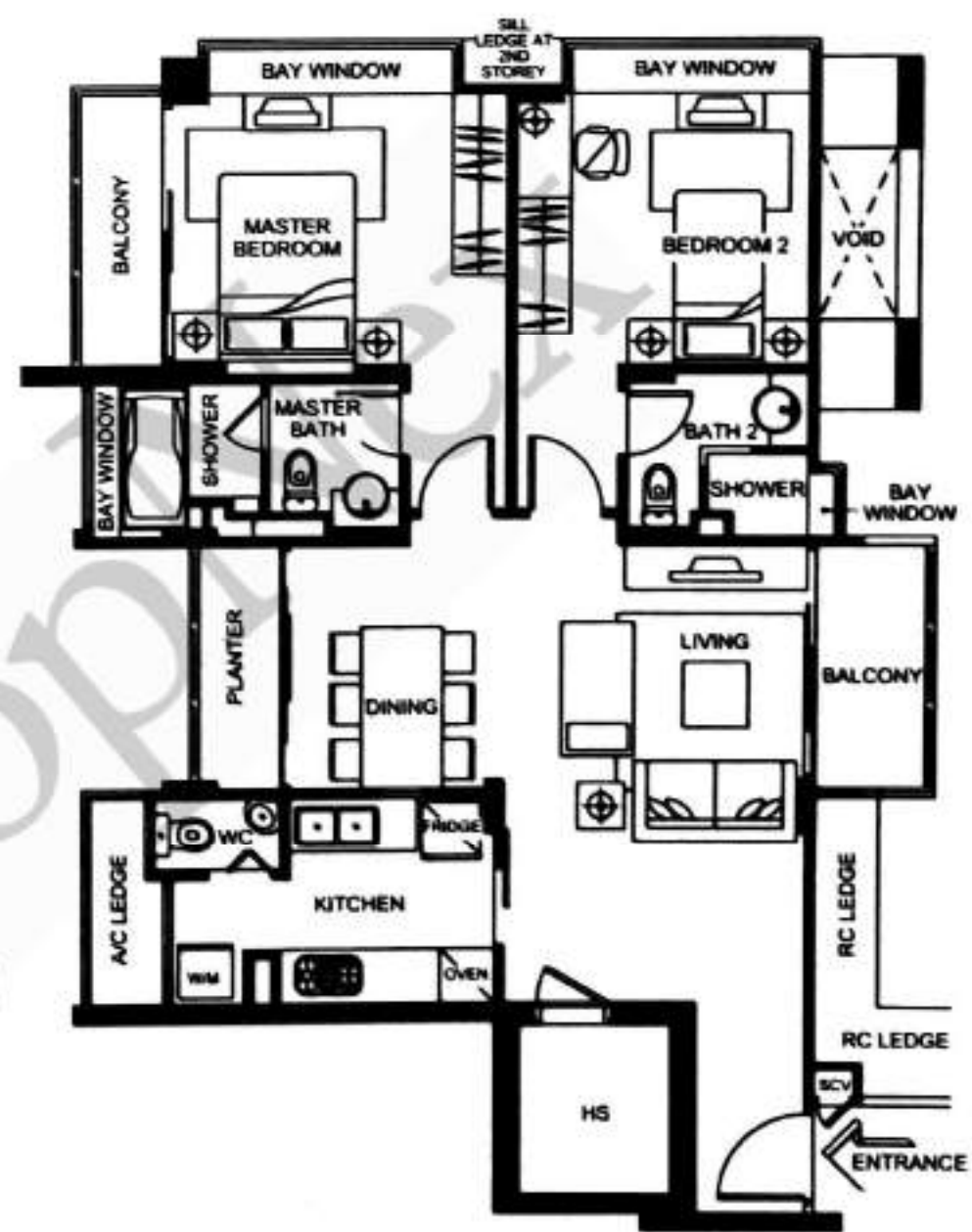
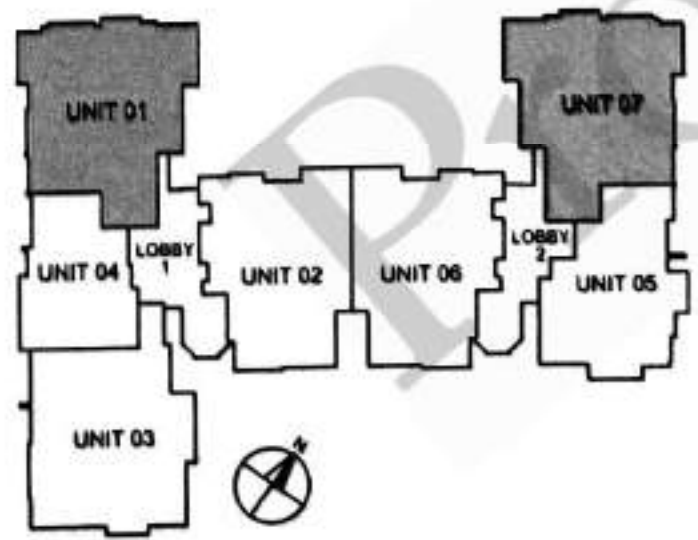
Area 1195sqft/111sqm

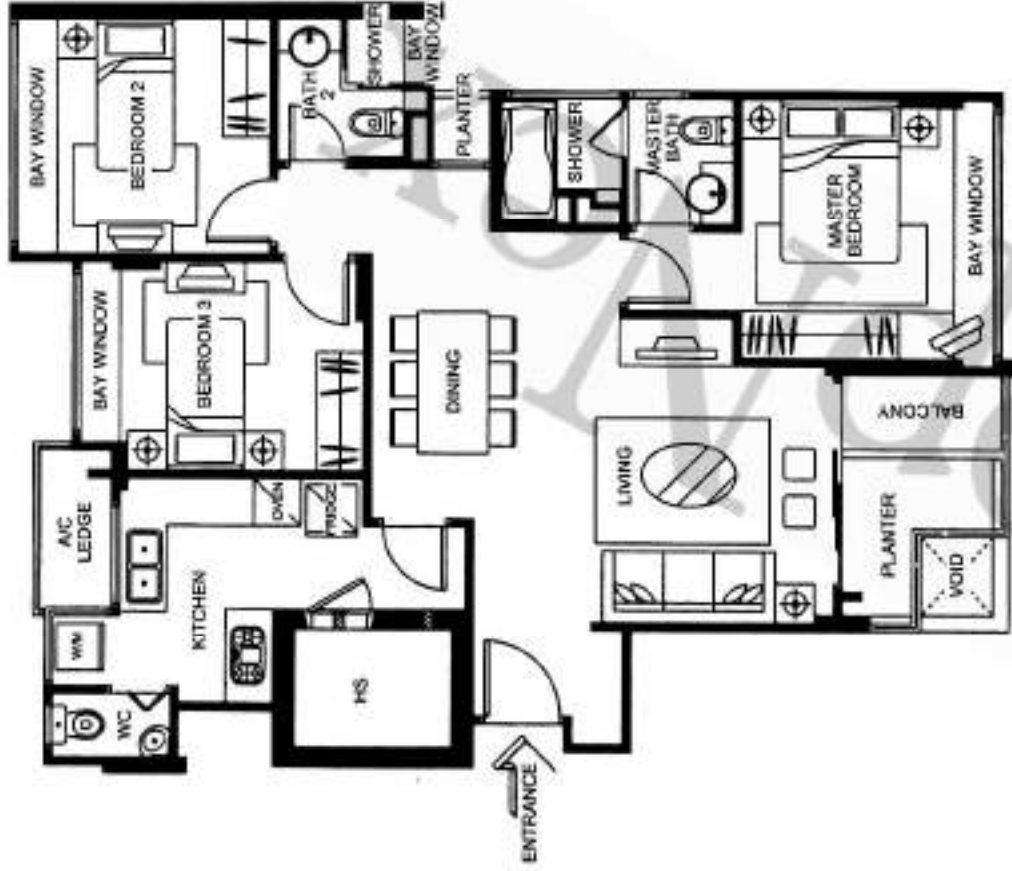
Unit #02-03, #03-03, #04-03



Type C

Area 980sqft/91sqm
Unit #02-01, #03-01, #04-01,
#02-07, #03-07, #04-07





Type D

Area 1044sqft/97sqm

Unit #03-02, #04-02, #03-06, #04-06

