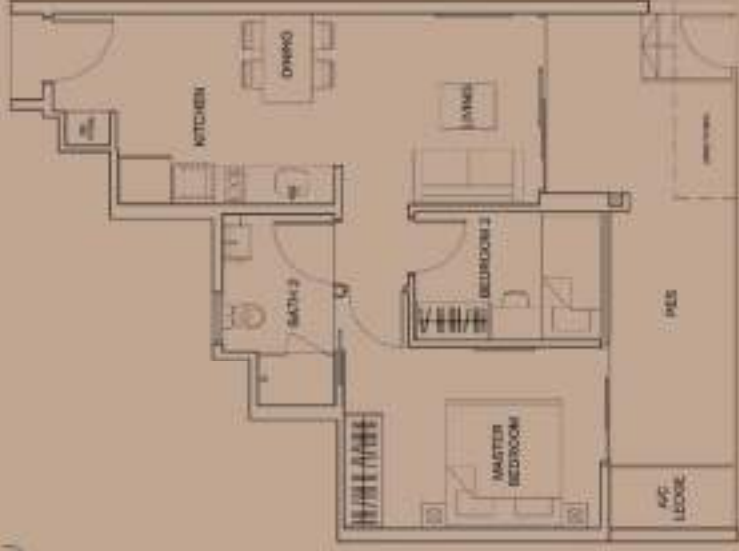


TYPE B-G (2-bedroom)

Area 764 sqft / 71 sqm (inclusive of 17m² PES & 2m² A/C Lobby)

Unit B/L 18, #01-06 (Mirror Image)

B/L 20, #01-12



TYPE B (2-bedroom)

Area 646 sqft / 60 sqm (inclusive of 6m² Balcony & 2m² A/C Lobby)

Unit B/L 18, #02-06 to #12-06 (Mirror Image)

B/L 20, #02-12 to #12-12



Scale / 100



TYPE A-G (1-bedroom)

Area 581 sqft / 54 sqm (includes of 12sq' PES & 3sq' A/C Ledger)

Unit B12-18, #01-05 (Mirror Image)

B14-20, #01-13



TYPE A (1-bedroom)

Area 517 sqft / 48 sqm (includes of 6sq' Balcony & 3sq' A/C Ledger)

Unit B12-18, #02-05 to #12-05 (Mirror Image)

B14-20, #02-13 to #12-13

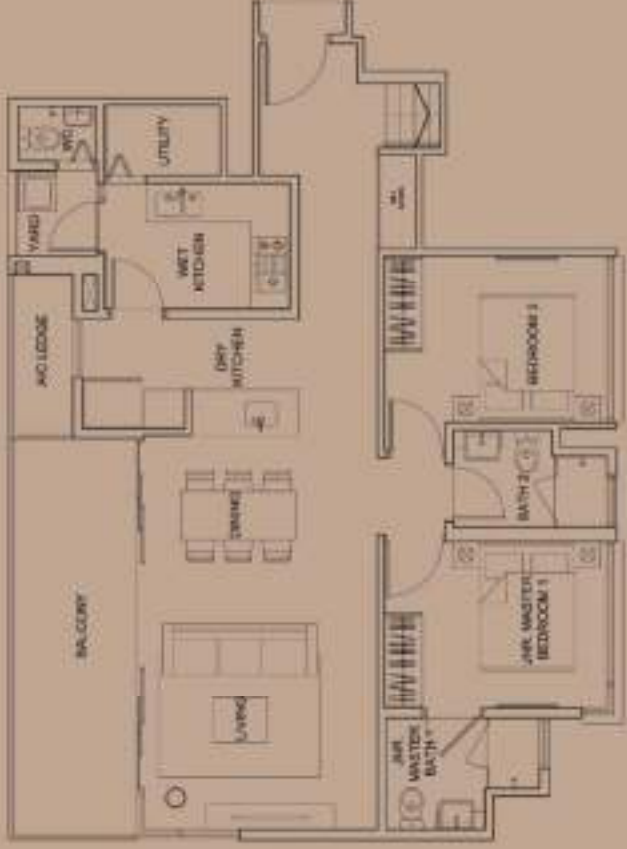


Scale 1:100

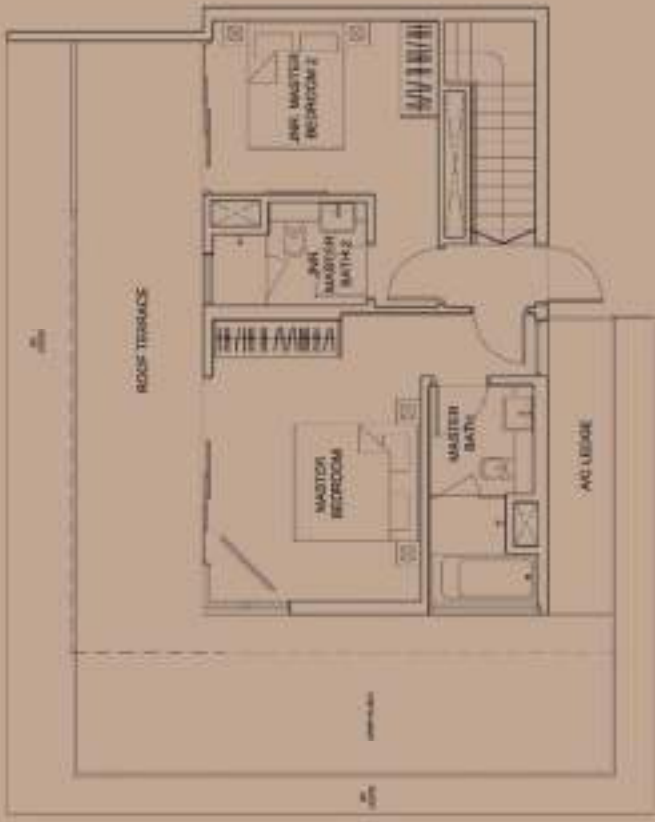


TYPE PH7 (4-bedroom Penthouse)

Area 2,110 sqft / 196 sqm (includes 17sqm Terrace, Bal. A/C, Ledger & Vinyl Roof Terrace)
 Unit B1x 28, #13-23
 B1x 30, #13-27



Lower Storey



Upper Storey

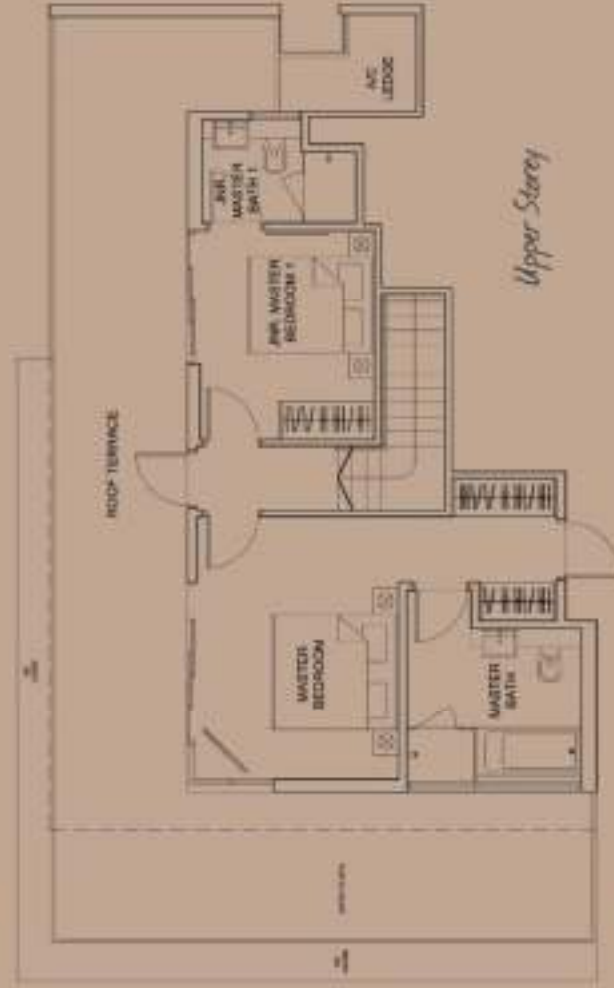


All plans are submitted to architects as they may be approved by the relevant authorities. Plans show an approximate measurement and subject to final survey.
 BP Approval No: A0715-011113-0171-0001 dated 20 May 2015

TYPE PH8 (4-bedroom Penthouse)

Area 7,260 sqft / 210 sqm (Inclusive of 22sqft Balcony, but A/C Units & 49sqft Roof Terrace)

- Unit
 BLE 22, #13-16
 BLE 26, #13-20
 BLE 28, #13-24
 BLE 30, #13-28

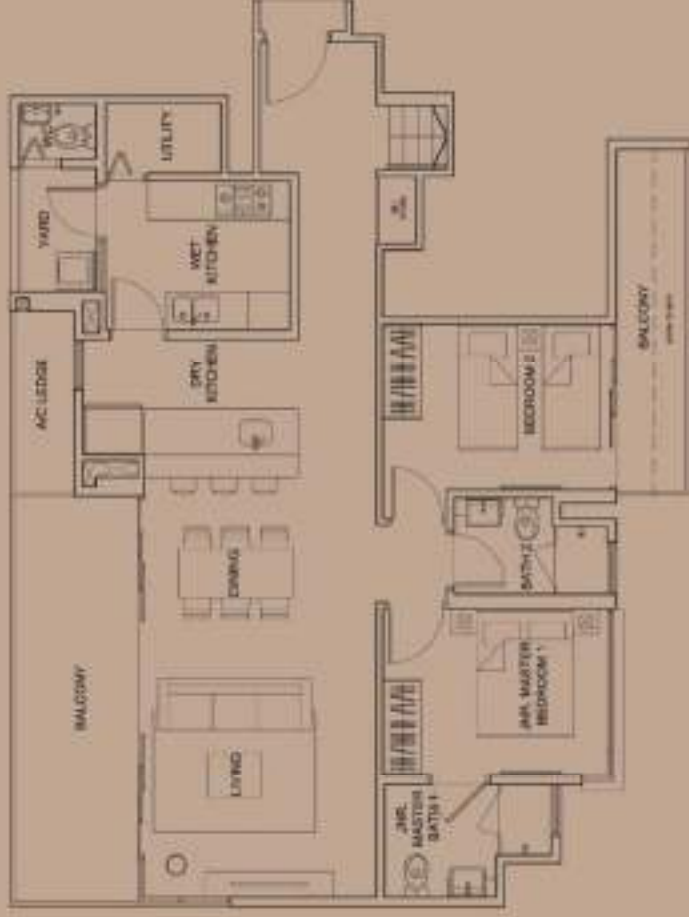


All plans are submitted to authorities as may be approved by the relevant authorities. Plans areas are approximate measurements and subject to final survey.

TYPE PH9 (4-bedroom Penthouse)

Dual Views

Area 2,336 sqft / 217 sqm (includes of Pool Balcony, Balc AC Ledge & Dual Roof Terrace)
 Unit B/L Z6, #13-19



Lower Storey



Upper Storey



Scale 1:100



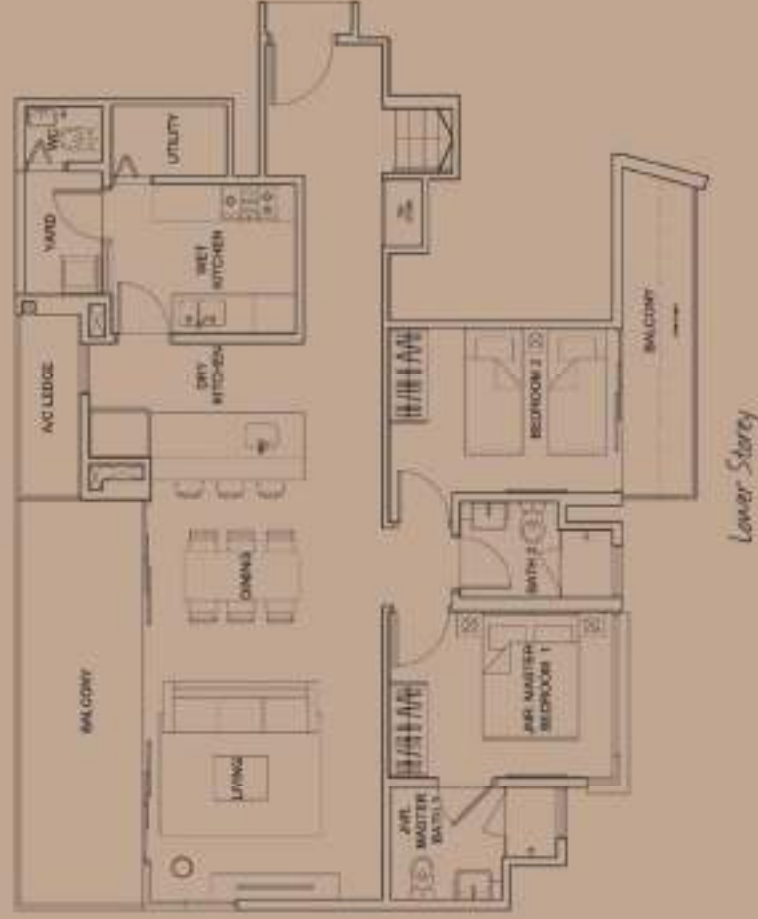
All plans are subject to amendments as they are approved by the relevant authorities. Please refer to the registered measurements and subject to final survey.
 By Approval No. N07150111-2011-1901 (dated 25 May 2012)

TYPE PH9a (4-bedroom Penthouse)

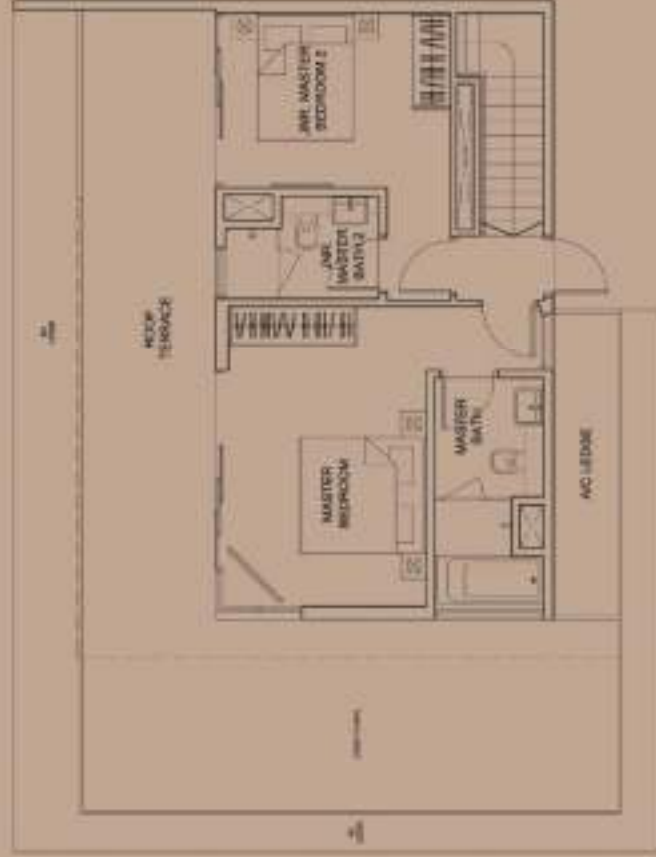
Dual Views

Area 2,325 sqft / 216 sqm (includes of 19-m² Balcony, 8m² A/C Ledge & 47m² Roof Terrace)

Unit B/L 22, #13-15



Lower Storey



Upper Storey



Scale 1/100

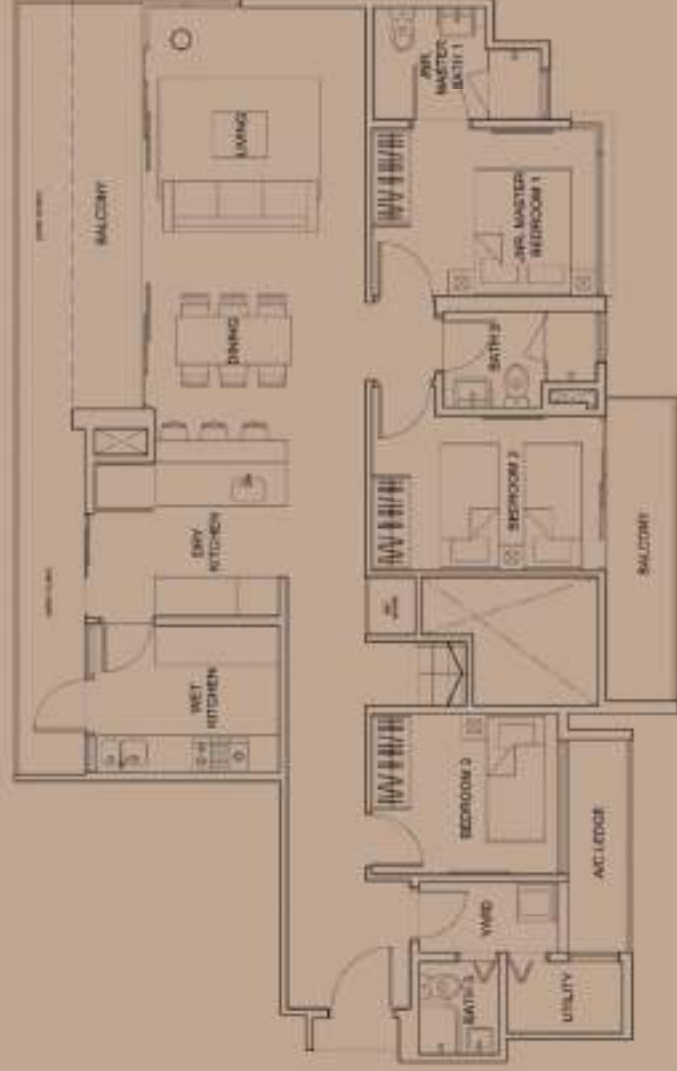


All plans are submitted to practitioners as they are approved by the relevant authorities. Floor areas are approximate measurements and subject to final survey.
 (Per Approval No. MPE/2017/11/08/18/4/1) 2000/27 MAY 2017

TYPE PH10 (5-bedroom Penthouse)

Dual Views

Area 2,508 sqft / 233 sqm (includes of 25m² Balcony, Roof A/C Lodge & 30m² Roof Terrace)
 Unit B/Lt 26, #13-21
 B/Lt 28, #13-25



Lower Storey



Upper Storey



Scale 1: 100



All plans are subjected to amendments as may be approved by the relevant authorities. Floor areas are approximate measurements and subject to final surveys. (GP Subtotal No. 80719-01111)-01111-0491 (Issue 2) May 2017

TYPE PH3 (4-bedroom Penthouse)

Area 1,787 sqft / 166 sqm (Inclusive of 11m² Balcony, 2m² A/C Ledge & 39m² Roof Terrace)

Unit B/E 18, #12-03 (Mirror Image) & B/E 20, #12-08 (Pod Views)

B/E 18, #12-04 & B/E 20, #12-14 (Mirror Image)



Lower Storey



Upper Storey



Scale: 1:100



TYPE PH4 (4-bedroom Penthouse)

Pool Views

Area 1,999 sqft / 185 sqm (Inclusive of 13 sqm Balcony, 4 sqm AC ledge & 4 sqm Roof Terrace)
 Unit BLK 18, #12-01 (Mirror Image)
 BLK 20, #12-10



Lower Storey



Upper Storey



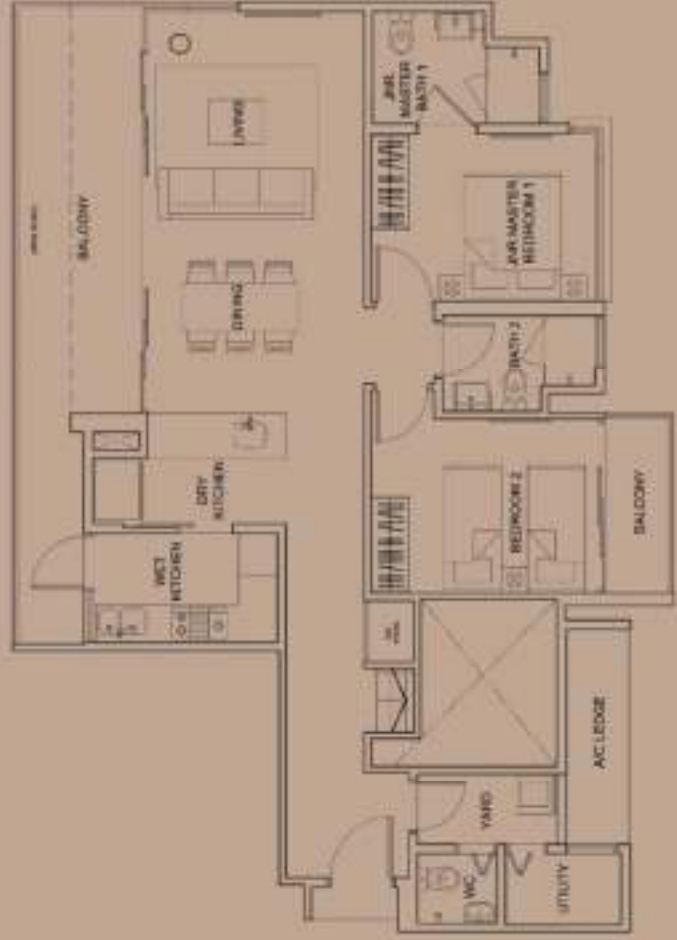
Scale 1:100



TYPE PH5 (4-bedroom Penthouse)

Dual Views

Area 2,099 sqft / 195 sqm (inclusive of 2,000 sqft Balcony, 800 sqft A/C Ledge & 2,100 sqft Roof Terrace)
Unit Blk 22, #13-17



Lower Storey



Upper Storey



Scale 1:100



All plans are submitted to architects as they are approved by the relevant authorities. Floor areas and approximate measurements are subject to final survey.
GP Approved No: A0173-01-11-2011-0001 dated 07 May 2011

TYPE PH6 (4-bedroom Penthouse)

Pool Views

Area 2,088 sqft / 194 sqm (inclusive of Half-Balcony, Half A/C Ledge & 54sqft Roof Terrace)
 Unit BIL 30, #13-29



Lower Storey



Upper Storey

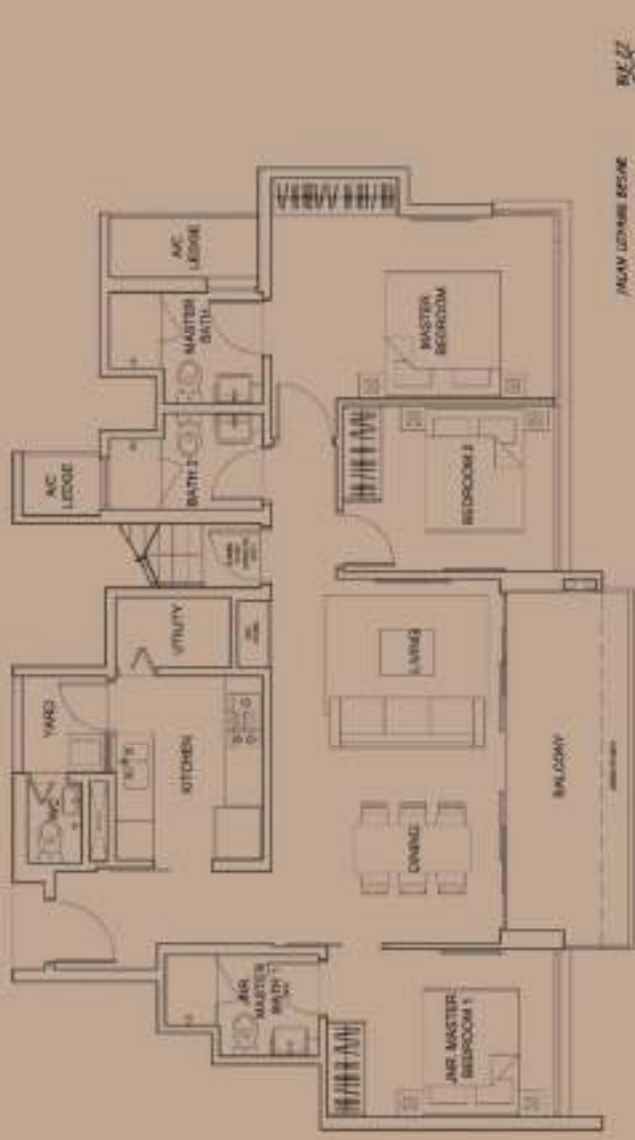


All plans are subjected to amendments as may be approved by the relevant authorities. Floor areas are approximate measurements and subject to final survey.
 GP-Approved No. AH119/DT115-2011-6901 dated 20 May 2012

TYPE C9-RT (3-bedroom)

Pool Views

Area 1,787 sqft / 166 sqm (includes of 10m² Balcony, 10m² AC Ledge & 10m² Roof Terrace)
Unit BU 22, #13-18



Lower Storey



Upper Storey

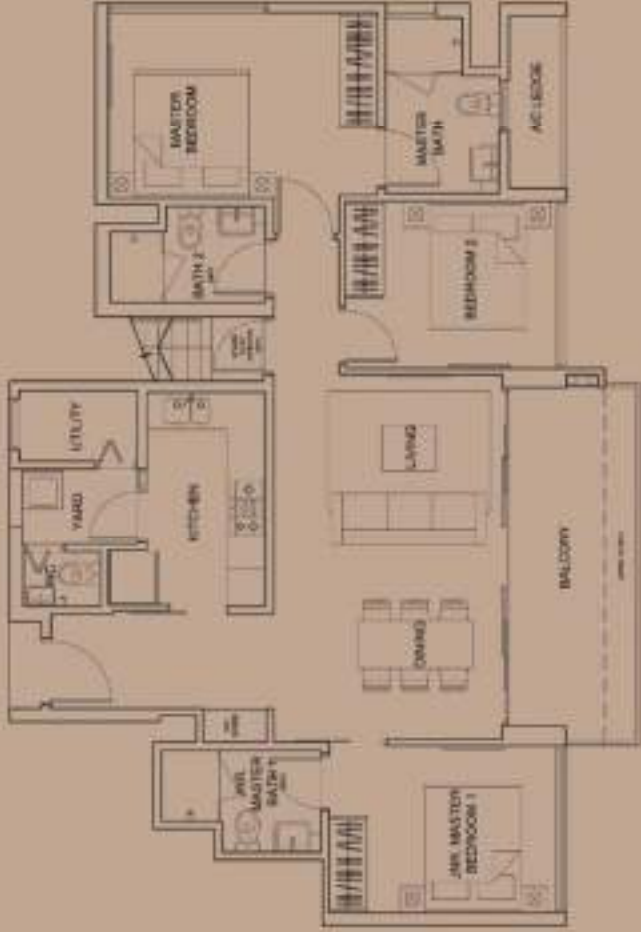
Scale 1:100



TYPE C10-RT (3-bedroom)

Area: 1,711 sqft / 159 sqm (includes of 12m² Balcony, 3m² A/C Lodge & 38m² Roof Terrace)

Unit: B/E 30, #13-30



Lower Storey



Upper Storey

Scale: 1:100



TYPE D-G (4-bedroom)

Dual Views

Area 1,744 sqft / 162 sqm (exclusive of 56sqm PES & 6sqm A/C Ledge)
 Unit B/E 26, #01-21
 B/E 28, #01-25



TYPE D (4-bedroom)

Dual Views

Area 1,367 sqft / 127 sqm (exclusive of 21sqm Balcony & 5sqm A/C Ledge)
 Unit B/E 26, #02-21 to #02-21
 B/E 28, #02-25 to #02-25



Scale 1:100



TYPE PHI (3-bedroom Penthouse)

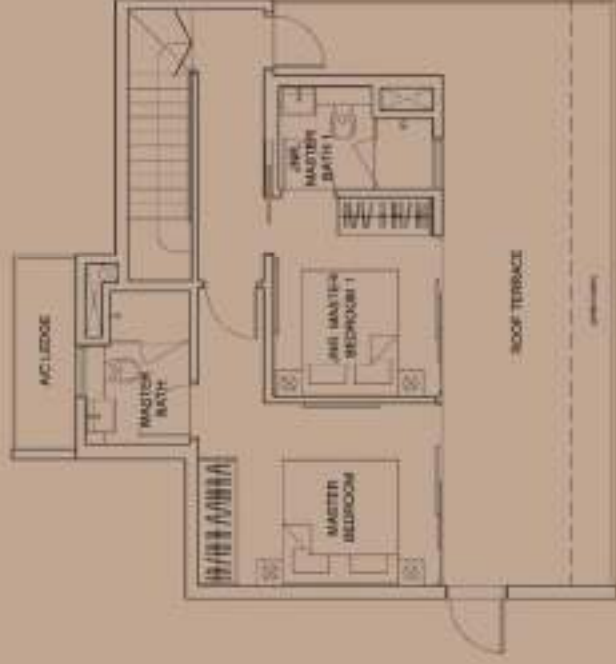
Area 1,658 sqft / 154 sqm (includes of 12m² Balcony, 6m² AC Ledge & 29m² Roof Terrace)

Unit BU 18, #12-07 (Mirror Image)

BU 20, #12-11



Lower Storey



Upper Storey



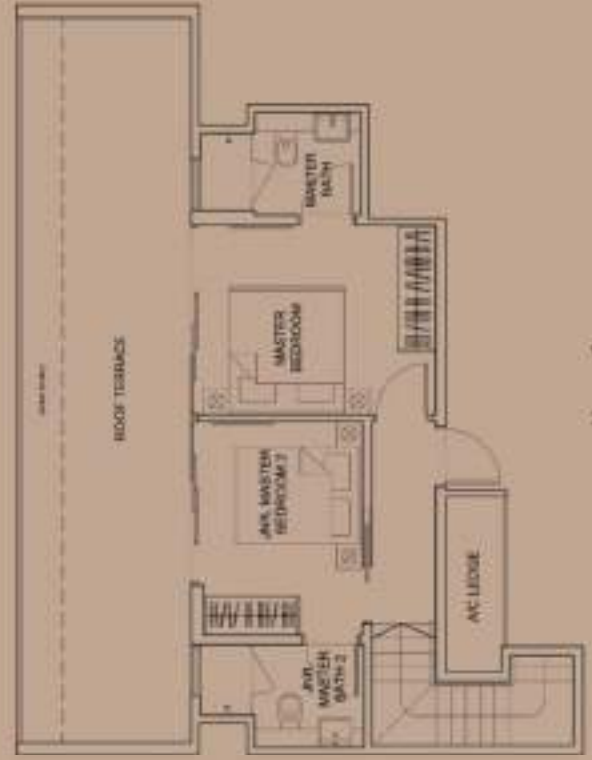
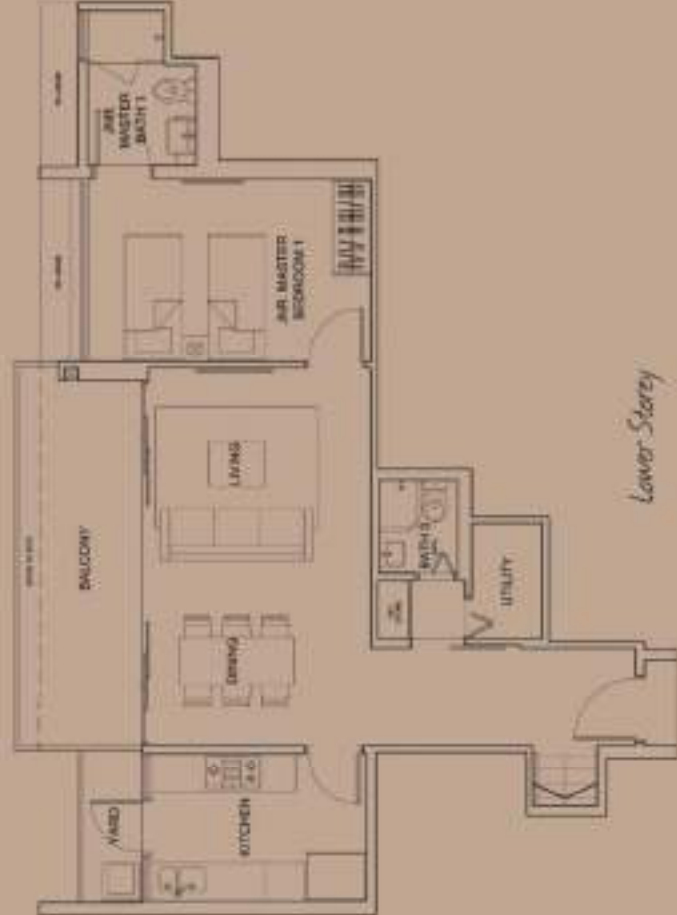
Scale 1:100



Pool Views

TYPE PH2 (3-bedroom Penthouse)

Area 1,701 sqft / 158 sqm (inclusive of 12sqft Balcony, 3sqft A/C Ledge & 32sqft Roof Terrace)
 Unit Bk 18, #1Z-02
 Bk 20, #1Z-09 (Mirror Image)



Scale: 1/100



All plans are subjected to amendments as they are approved by the relevant authorities. Floor areas and approximate measurements are subject to final survey.
 For Approval No. 2017-01111-02218(PU) dated 28 May 2018

TYPE C7-G (3-bedroom)

Area 1,578 sqft / 128 sqm
(includes of 32sqm PES & 4sqm A/C Lodge)
Unit Blk 30, #01-29

Pool Views



TYPE C7 (3-bedroom)

Area 1,191 sqft / 106 sqm
(includes of 11sqm Balcony & 5sqm A/C Lodge)
Unit Blk 30, #02-29 to #12-29

Pool Views



Scale 1:100

0 1 2 3 4m

TYPE C8-G (3-bedroom) Dual Views

Area 1,528 sqft / 142 sqm (inclusive of 46sqm PES & 5sqm A/C Ledge)

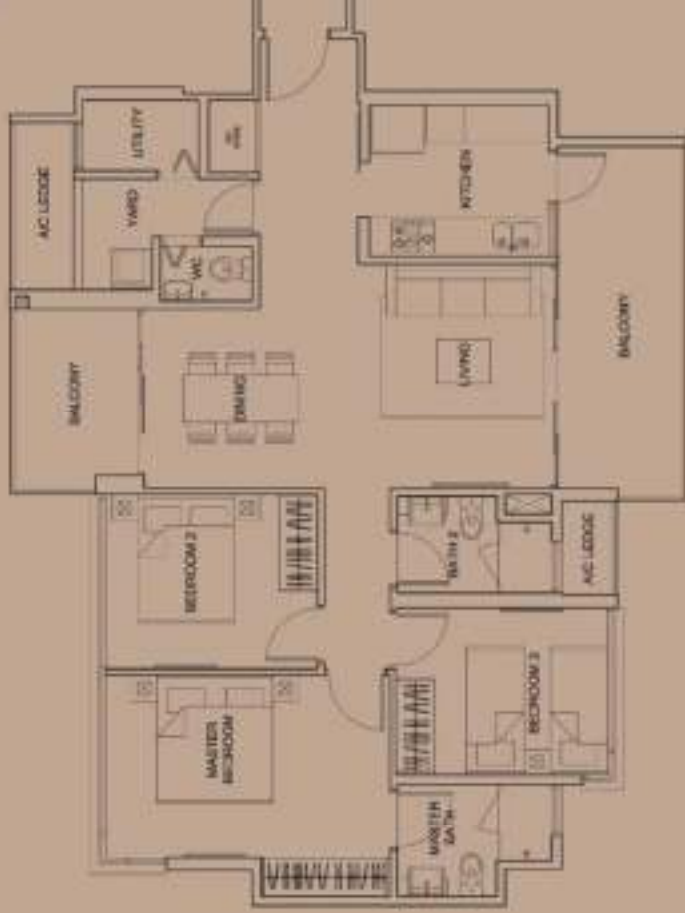
Unit B1E Z6, #01-19



TYPE C8 (3-bedroom) Dual Views

Area 1,216 sqft / 113 sqm (inclusive of 77sqm Balcony & 5sqm A/C Ledge)

Unit B1E Z6, #02-19 to #12-19



Scale: 1:100

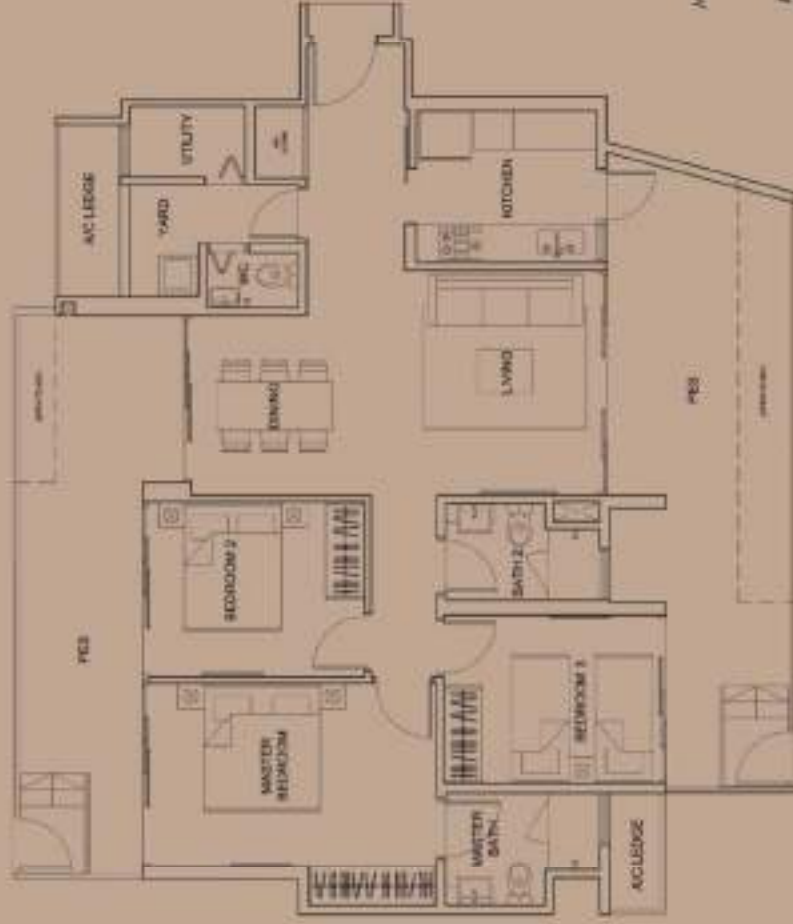
0 1 2 3 4m

TYPE C8a-G (3-bedroom)

Dual Views

Area 1,518 sqft / 141 sqm (includes of 45sqm PES & 5sqm A/C Ledge)

Unit B11-22, 11-15



TYPE C8a (3-bedroom)

Dual Views

Area 1,206 sqft / 112 sqm (includes of 17sqm Balcony & 5sqm A/C Ledge)

Unit B11-22, 11-15, 16, 11-15



Scale 1:100

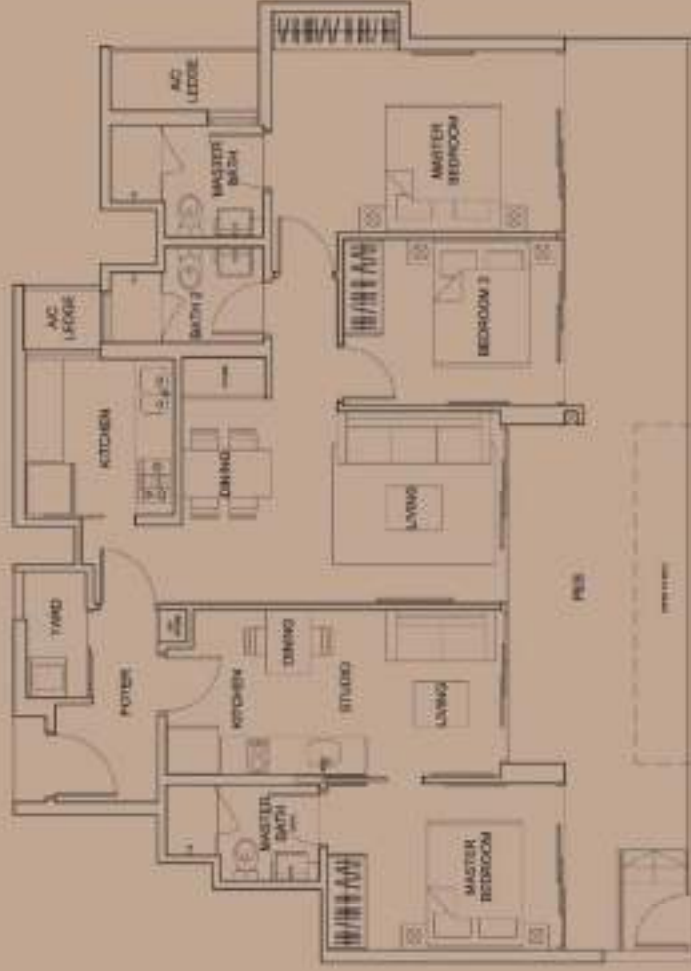


TYPE DK-G (3-bedroom Dual Key)

Pool Views

Area 1,464 sqft / 136 sqm (includes of 39m² PEs & 4m² A/C Ledge)

Unit B/E Z.Z. #01-18



TYPE DK (3-bedroom Dual Key)

Pool Views

Area 1,227 sqft / 114 sqm (includes of 12m² Balcony & 4m² A/C Ledge)

Unit B/E Z.Z. #02-18 to #12-18



Scale: 1:100



All plans are subject to amendments as they are approved by the relevant authorities. Floor levels are approximate measurements and subject to field survey.
 Ref: Approval No. 4072/07/111/0711-0712 dated 21 May 2012

TYPE DK1-6 (3-bedroom Dual Key)

Area 1,942 sqft / 134 sqm (includes of 33sqm PES & 4sqm A/C Ledge)

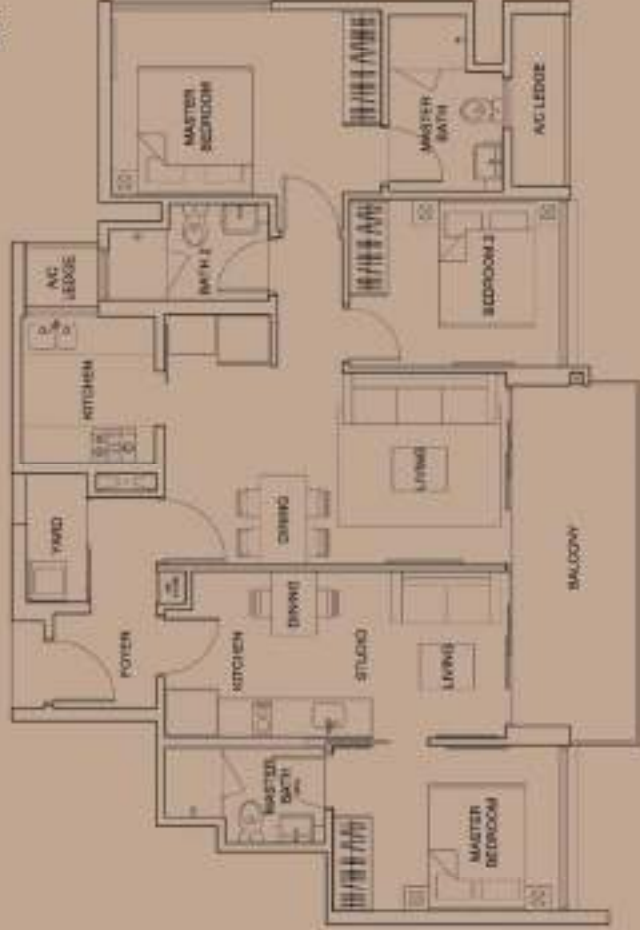
Unit B/E 30, #01-30



TYPE DK1 (3-bedroom Dual Key)

Area 1,206 sqft / 112 sqm (includes of 11sqm Balcony & 4sqm A/C Ledge)

Unit B/E 30, #02-30 to #12-30



Scale 1:100



TYPE C-6 (3-bedroom)

Area 1,119 sqft / 104 sqm (inclusive of 26sqm PES & 4sqm A/C Ledges)
 Unit Blk 18, #01-03 (Mirror Image) & Blk 20, #01-08 Pool Views
 Blk 18, #01-04 & Blk 20, #01-14 (Mirror Image)



TYPE C (3-bedroom)

Area 904 sqft / 84 sqm (inclusive of 7sqm Balcony & 4sqm A/C Ledges)
 Unit Blk 18, #02-03 to #11-03 (Mirror Image) Pool Views
 Blk 20, #02-08 to #11-08 Pool Views
 Blk 18, #02-04 to #11-04
 Blk 20, #02-14 to #11-14 (Mirror Image)



All plans are submitted to architects as they are approved by the relevant authorities. Floor areas and approximate measurements are subject to final survey.
 JGJ Architect No. NBT12-0111-2017-0401 Area 25 May 2012

TYPE C1-G (3-bedroom)

Area 1,119 sqft / 104 sqm (includes of 27sqm PES & 4sqm A/C Ledger)

Unit
 BLE 22, #01-16
 BLE 26, #01-20
 BLE 28, #01-24
 BLE 30, #01-28



TYPE C5 (3-bedroom)

Area 1,119 sqft / 104 sqm (includes of 11sqm Balcony & 4sqm A/C Ledger)

Unit
 BLE 22, #02-16 to #12-16
 BLE 26, #02-20 to #12-20
 BLE 28, #02-24 to #12-24
 BLE 30, #02-28 to #12-28



Scale 1:100



TYPE C2-G (3-bedroom)

Pool Views

Area: 1,184 sqft / 110 sqm (includes of 2.6m² PES & 4m² A/C Ledge)

Unit: B/L 18, #01-01 (Mirror Image)

B/L 20, #01-10



TYPE C2 (3-bedroom)

Pool Views

Area: 980 sqft / 91 sqm (includes of 7m² Balcony & 4m² A/C Ledge)

Unit: B/L 18, #02-01 to #11-01 (Mirror Image)

B/L 20, #02-10 to #11-10



Scale 1 : 100



TYPE C3-G (3-bedroom)

Pool Views

Area 1,216 sqft / 113 sqm (exclusive of 32sqft FES & 4sqft A/C Ledge)
 Unit Bk 26, #01-22
 Bk 28, #01-26



TYPE C3 (3-bedroom)

Pool Views

Area 980 sqft / 91 sqm (exclusive of 10sqft Balcony & 4sqft A/C Ledge)
 Unit Bk 26, #02-22 to #13-22
 Bk 28, #02-26 to #13-26



Scale 1:100



TYPE C4-6 (3-bedroom)

Area 1,399 sqft / 130 sqm (inclusive of 39sq' PES & 4sq' A/C Ledge)

Unit B/L 28, #01-23

B/L 30, #01-27

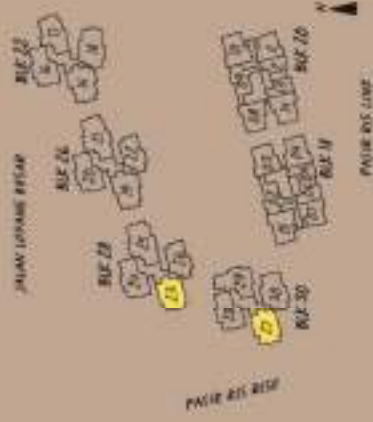


TYPE C4 (3-bedroom)

Area 1,098 sqft / 102 sqm (inclusive of 11sq' Balcony & 4sq' A/C Ledge)

Unit B/L 28, #02-23 to #12-23

B/L 30, #02-27 to #12-27



Scale 1:100



TYPE C6-6 (3-bedroom)

Dual Views

Area 1,421 sqft / 132 sqm (inclusive of 41sq' PES & 41sq' A/C Ledge)

Unit B/L Z/L #01-17



TYPE C6 (3-bedroom)

Dual Views

Area 1130 sqft / 105 sqm (inclusive of 13sq' Balcony & 41sq' A/C Ledge)

Unit B/L Z/L #02-17 to #12-17



Scale / 100



All plans are submitted to stakeholders at 100% by approved by the address authorities. Please ensure all appropriate measurements and submit to final forms.
SR Approval No. SR712-01111-2011 (SP11) dated 27 May 2012

TYPE B1-G (2-bedroom)

Area 980 sqft / 91 sqm (inclusive of 2 half PES & 4 half A/C Ledges)

Unit B1.18, #01-07 (Mirror image)

B1.20, #01-11



TYPE B1 (2-bedroom)

Area 818 sqft / 76 sqm (inclusive of 1 half Balcony & 4 half A/C Ledges)

Unit B1.18, #02-07 to #11-07 (Mirror image)

B1.20, #02-11 to #11-11



Scale 1:100



TYPE BZ-G (2-bedroom)

Pod Views

Area 1,001 sqft / 93 sqm (inclusive of 2-bnd PES & 3-sq' A/C Ledge)
Unit Bld 18, #01-02
Bld 20, #01-09 (Mirror Image)



TYPE BZ (2-bedroom)

Pod Views

Area 818 sqft / 76 sqm (inclusive of 6-sq' Balcony & 3-sq' A/C Ledge)
Unit Bld 18, #02-02 to #11-02
Bld 20, #02-09 to #11-09 (Mirror Image)



Scale 1 / 100

