

TYPE B

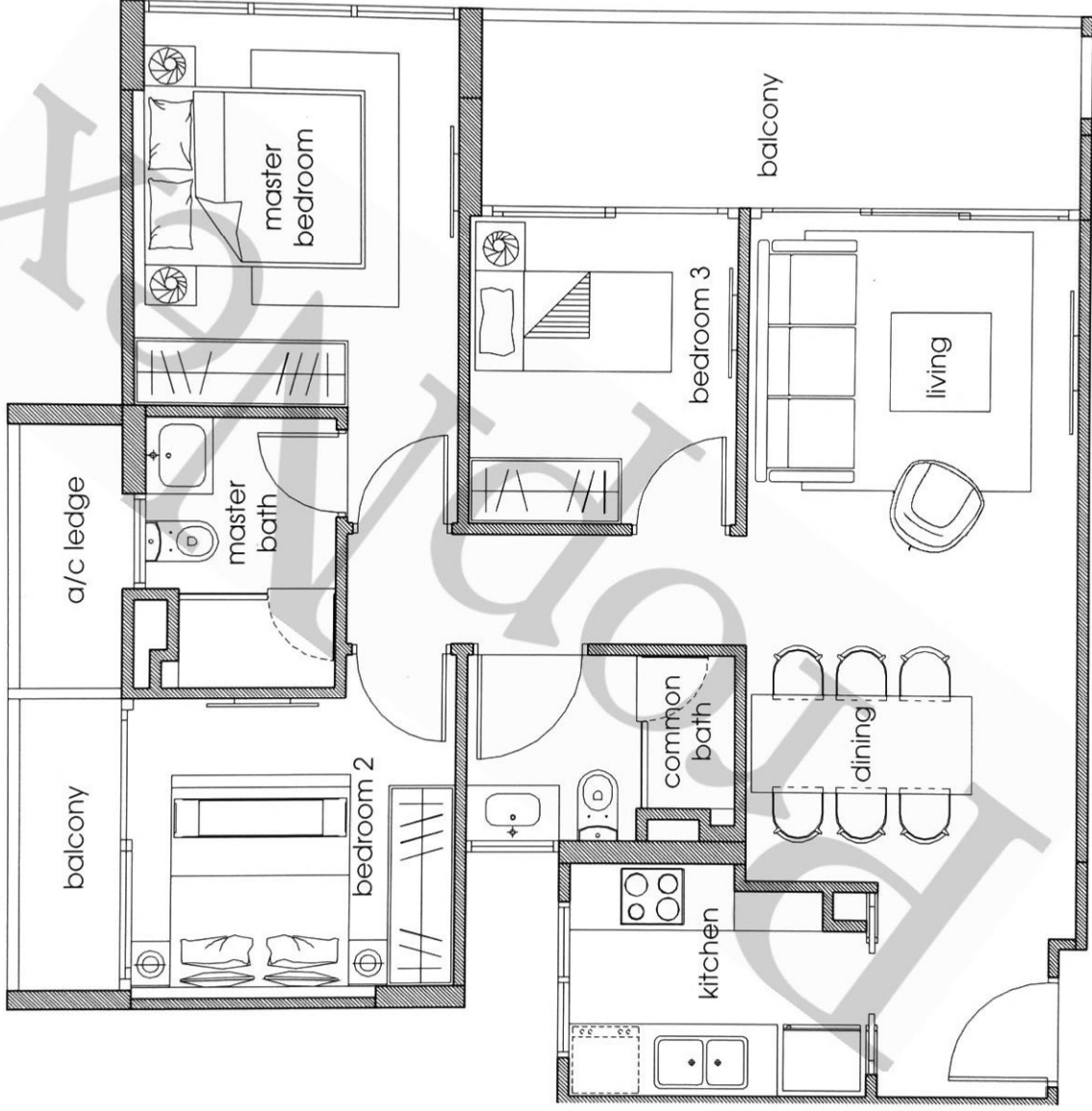
(2nd - 4th storey)

Area: 86 sqm / 926 sqft

Unit #02-02

#03-02

#04-02



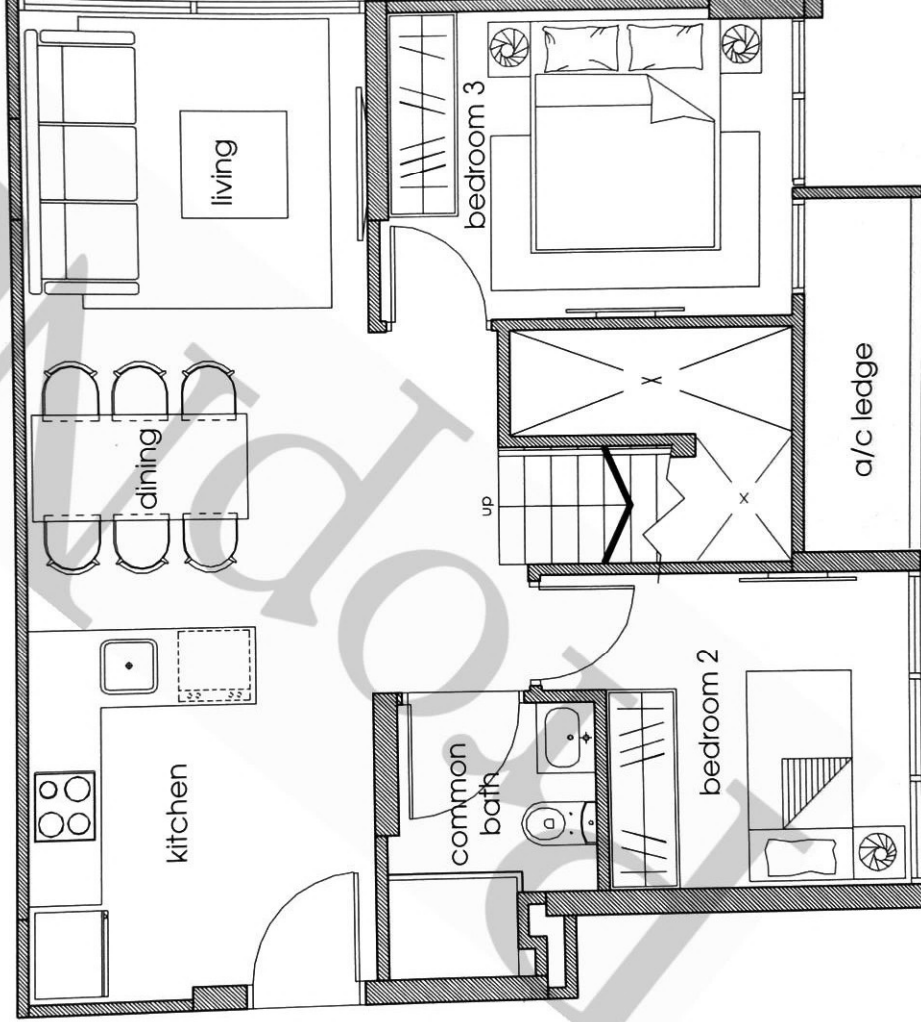
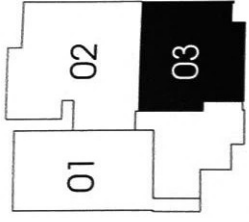
• Floor areas are inclusive of balconies, a/c ledges, roof terraces and voids where applicable.

TYPE CP

(5th - Attic storey)

Area: 105 sqm / 1130 sqft

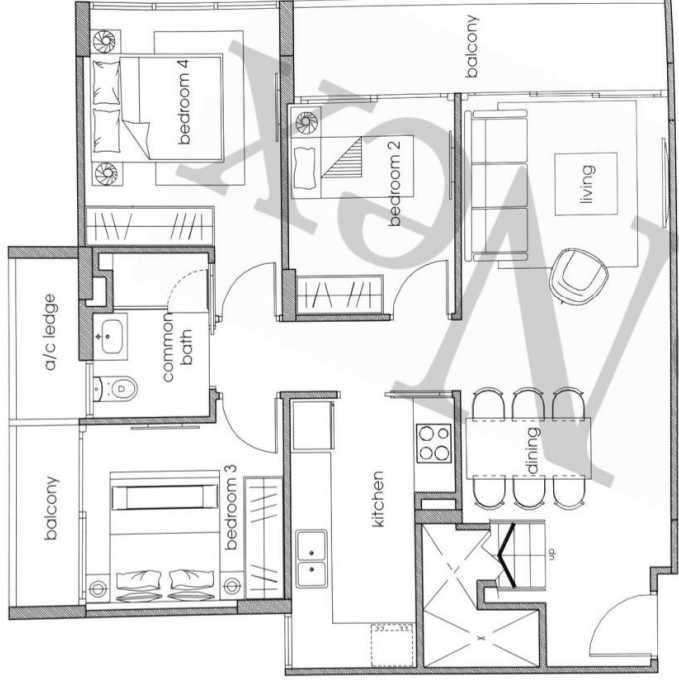
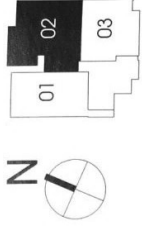
Unit #05-03



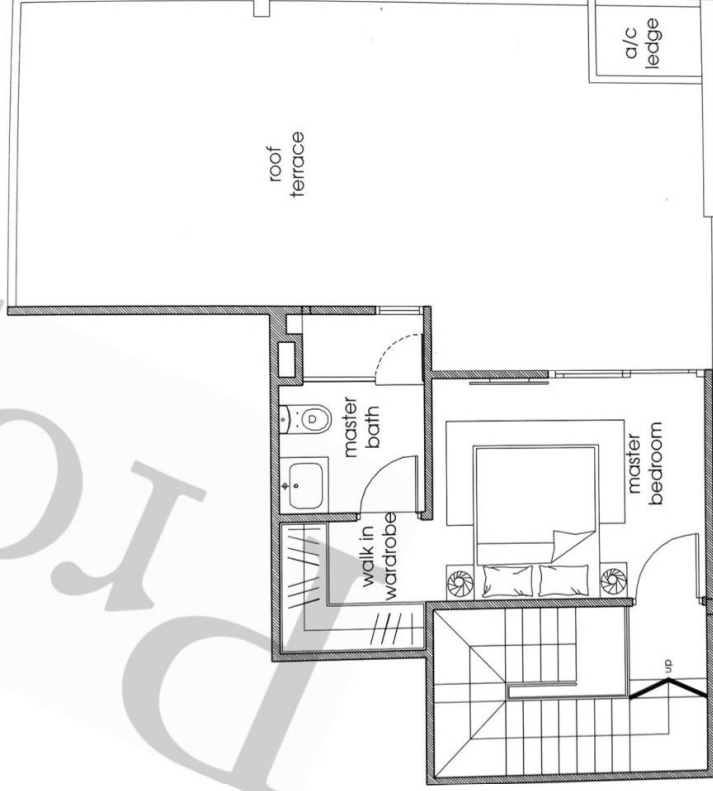
Lower Storey

TYPE BP

(5th - Attic storey)
Area: 155 sqm / 1668 sqft
Unit #05-02



Lower Storey



Upper Storey

TYPE C

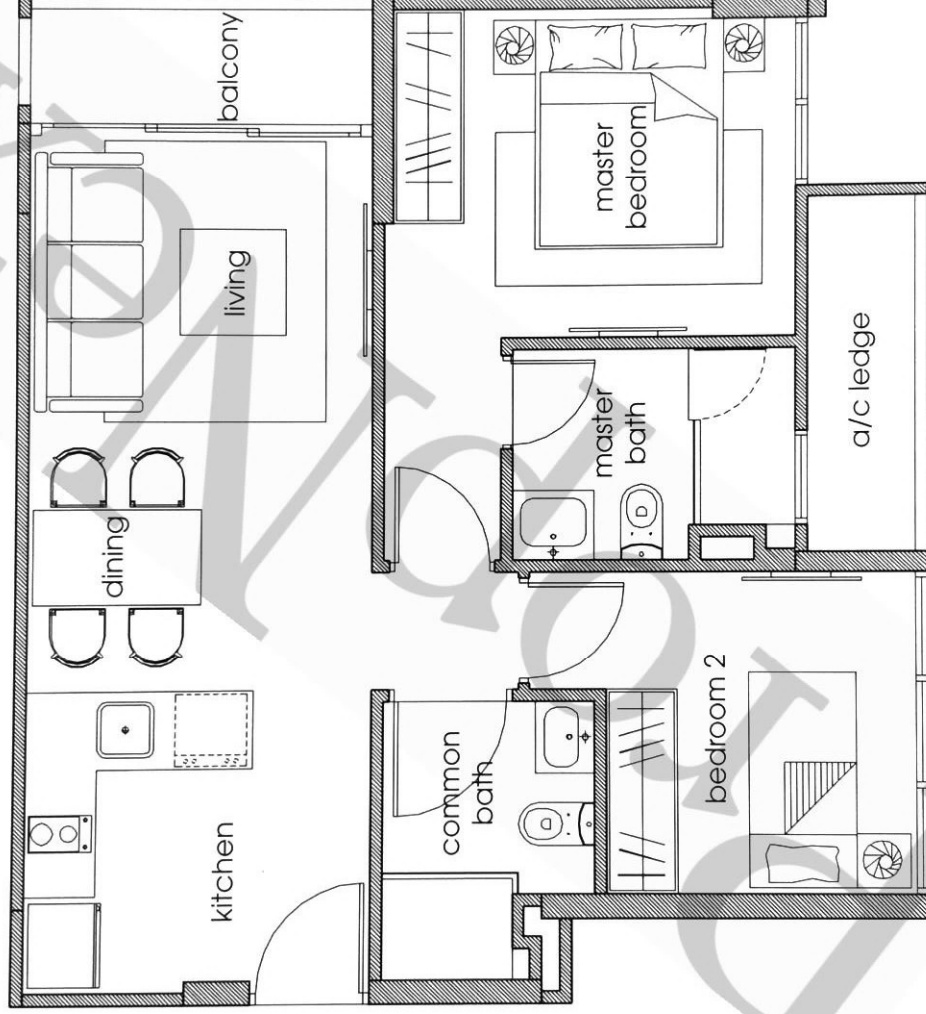
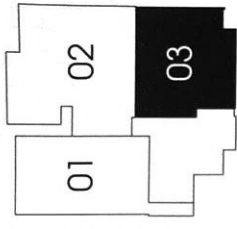
(2nd - 4th storey)

Area: 60 sqm / 646 sqft

Unit #02-03

#03-03

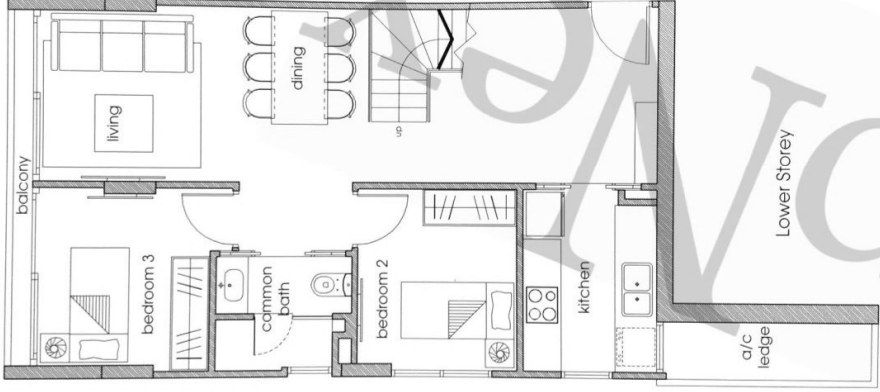
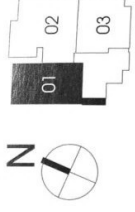
#04-03



• Floor areas are inclusive of balconies, a/c ledges, roof terraces and voids where applicable.

TYPE AP

(5th - Attic storey)
Area: 121 sqm / 1302 sqft
Unit #05-01



Lower Storey

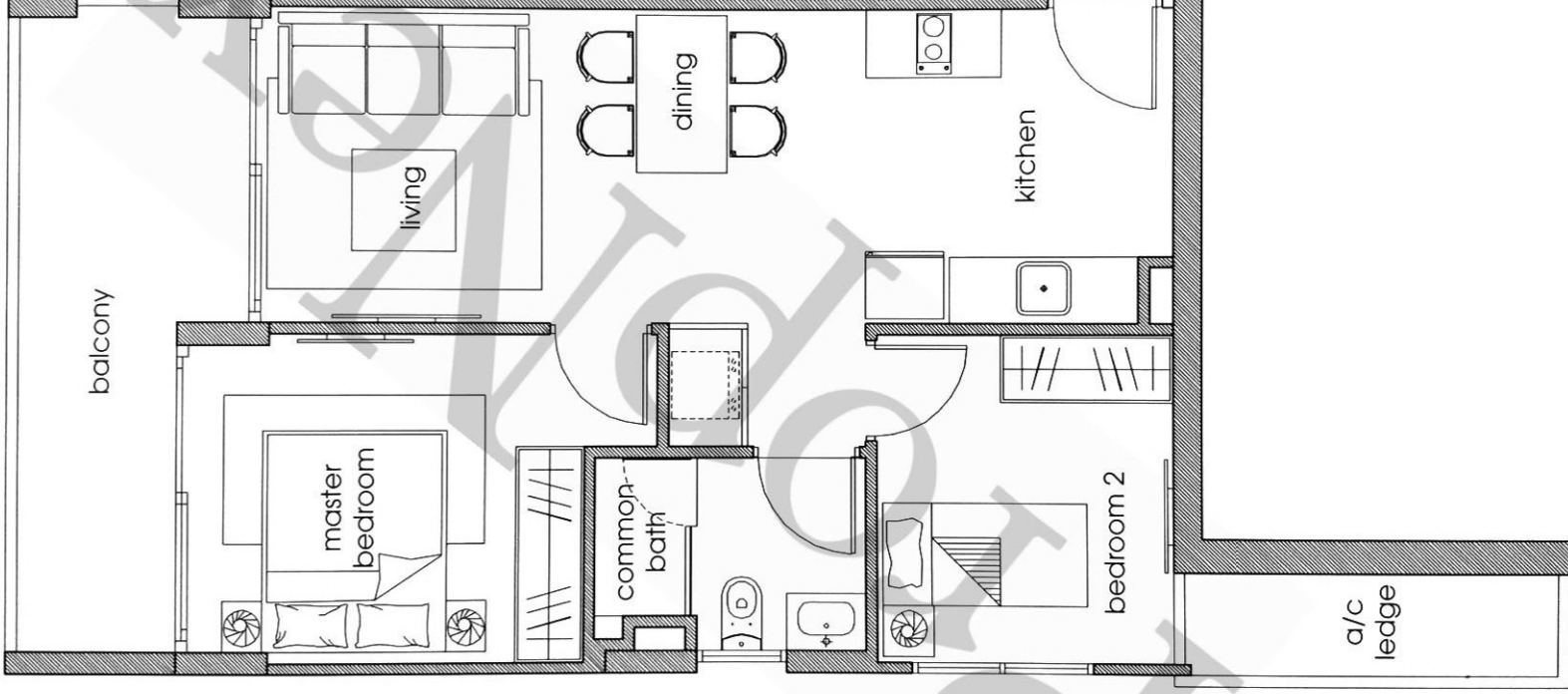
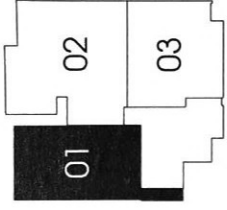


Upper Storey

• Floor areas are inclusive of balconies, a/c ledges, roof terraces and voids where applicable.

TYPE A

(2nd - 4th storey)
Area: 64 sqm / 689 sqft
Unit #02-01
#03-01
#04-01



• Floor areas are inclusive of balconies, a/c ledges, roof terraces and voids where applicable.